

TO BE CONSTRUCTED IN
TRACT NO. 37224

PRIVATE CONTRACT NO. 10156

A-88
W.S. 63

4 SHEETS, 8 PAGES

50494

SCALE: VERT. 1" = 4'
HORIZ. 1" = 40'
AUGUST, 1982
PREPARED IN THE OFFICES OF
SISK AND ENGINEERING ASSOCIATES
15230 BURBANK BLVD.
VAN NUYS, CALIFORNIA 91411 (213) 787-8550
BY: *[Signature]*
REG. C. E. No. 7312

THE FOLLOWING LATEST REVISED STANDARD PLANS ON FILE IN THE OFFICE OF THE COUNTY ENGINEER SHALL APPLY IN THE CONSTRUCTION OF THIS PROJECT:

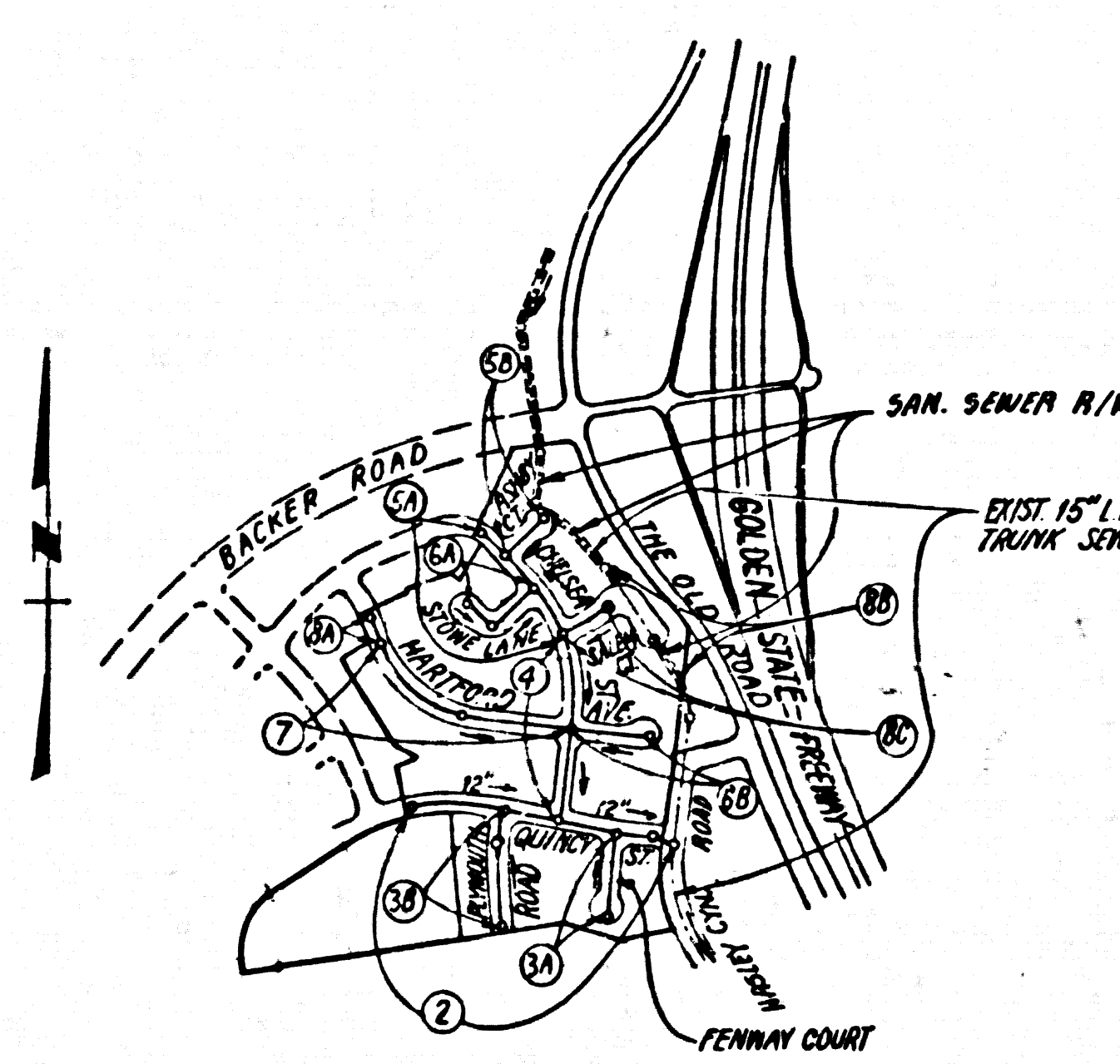
MINIMUM PUBLIC SAFETY REQUIREMENTS	5-1
BRICK MANHOLE	5-2
STANDARD MANHOLE STEP	5-7
BEDDING FOR SEWER PIPE	5-8
CALLING AND BACKSIGHT	5-9
WYE OR TEE SUPPORT	5-10
ALLOWABLE TRENCH WIDTHS	5-11
LOCKING MANHOLE FRAME AND COVER	5-12
NON-REINFORCED PRECAST CONCRETE MANHOLE	5-13
SPECIAL HOUSE LATERALS	5-14
CHIMNEY PIPE & BASE	5-15
SADDLES FOR HOUSE LATERALS	5-16

IN ADDITION THE FOLLOWING COUNTY SANITATION DISTRICT STANDARDS SHALL APPLY TO THE CONSTRUCTION OF THIS PROJECT:

STANDARD MANHOLE TYPE "D"	5-4-204
---------------------------	---------

COUNTY OF LOS ANGELES, CALIFORNIA
STEPHEN J. KOONCE, COUNTY ENGINEER
WALTER E. GARRISON, CHIEF ENGINEER
APPROVED: *[Signature]* DATE: 8/10/82
CHECKED: *[Signature]* DATE: 8/10/82
REG. C. E. No. 16583
SANTA CLARITA VALLEY BLDG. DIST. B-2

B.M. CL 3976 ELEV. 1065.705
R.D.B.M. TAG IN C.B. 4 FT. N. B.C.R. TOP 1/4
1/32 FT. E. Q.L. INT. THE OLD ROAD
& HASLEY C.N. RD. OFF-RAMP
NEWMALL QUAD. 1972.



INDEX MAP

SCALE: 1" = 600'

R.C. NO. 10156

TRACT NO. 37224

NOTE: NUMBERS IN CIRCLES INDICATE PAGE NUMBER

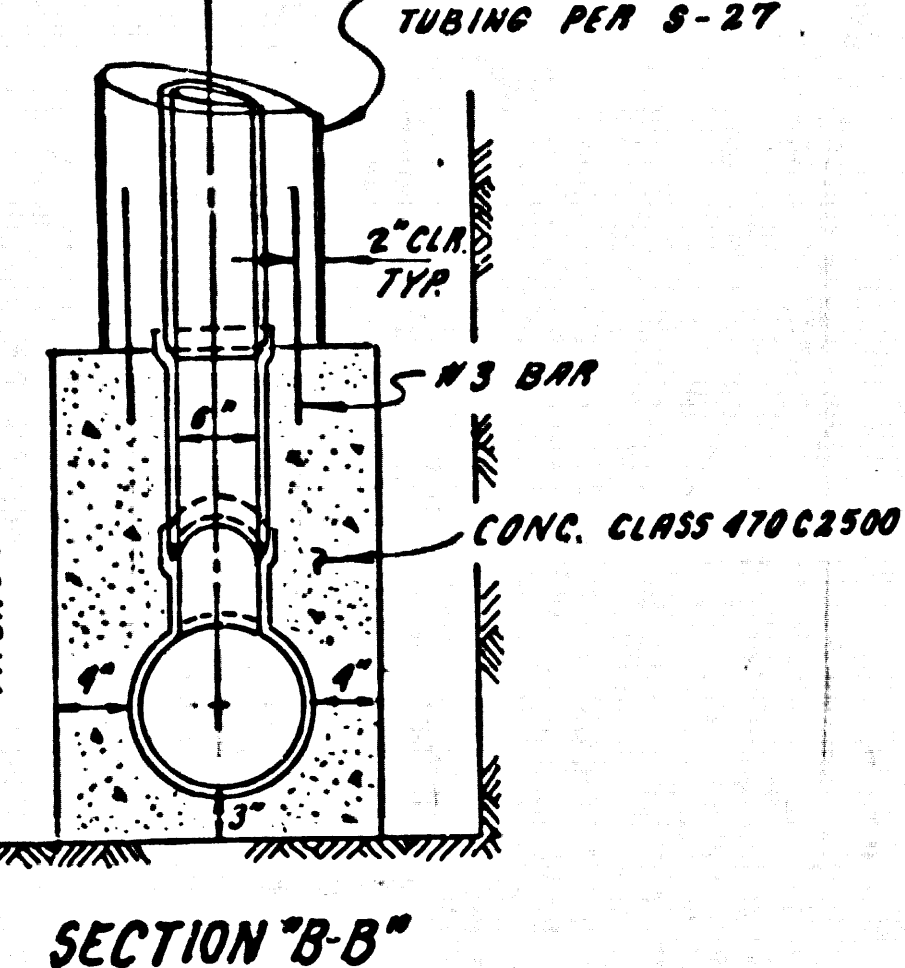
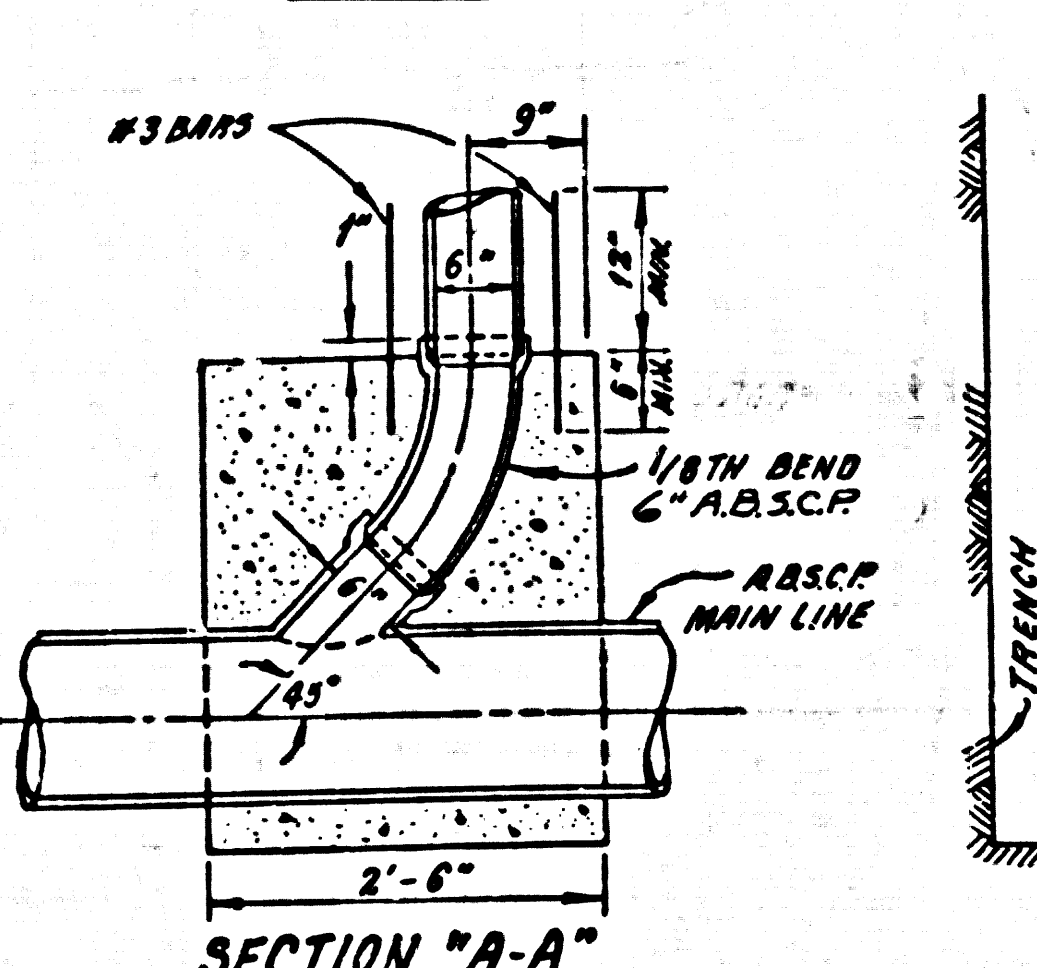
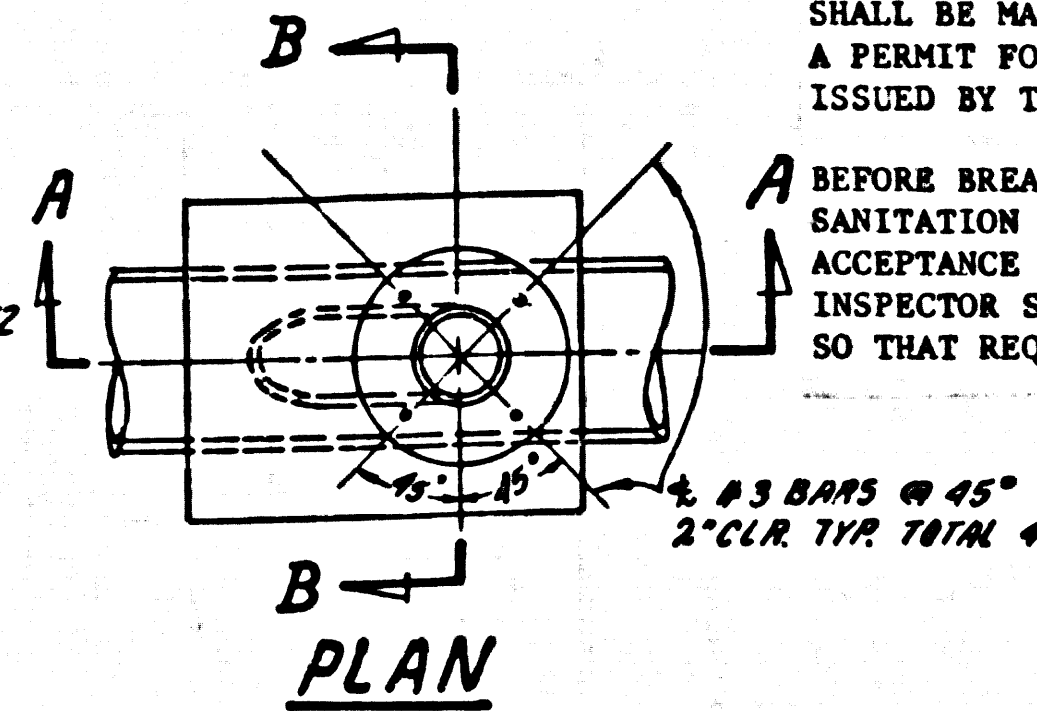
REVISION NO. 1 DATE 6/30/82
PAGE 2 ADDED PT. & T CONDUIT ON HASLEY CYN. ROAD
PAGE 2 REVISED ELEV. IN 5 CURB STA. 8+37 & REVISED TOP OF M.H. STA. 8+32.23
PAGE 2 REVISED ELEV. IN 5 CURB STA. 8+41 TO STA. 7+41 & ELEV. TOP OF M.H.
PAGE 2 ADDED 4" H.L. STA. 6+83 WEST
APPROVED: *[Signature]*
OFFICE OF COUNTY ENGINEER I.R.E. NO. 33134

CONSTRUCTION NOTES CONT'D.

16. FULL COMPLIANCE WITH PART IX OF THE SPECIAL PROVISIONS IS REQUIRED FOR THE INSTALLATION OF A.B.S. COMPOSITE PIPE.
17. MANHOLE WATER-TIGHT GASKETS AND CLAMPS ARE REQUIRED FOR THE CONNECTION OF A.B.S. COMPOSITE PIPE TO MANHOLE STRUCTURES.
18. A.B.S. SOLID WALL PIPE MUST BE USED FOR WYE AND HOUSE LATERAL CONNECTIONS TO A.B.S. COMPOSITE MAINLINE SEWER PIPE.
19. A.B.S. COMPOSITE PIPE SHALL BE BEDDED IN CONFORMANCE WITH THE TABLE IN SECTION B-3.1 PART IX OF THE SPECIAL PROVISIONS.
20. 3 DEGREE DEFLECTION COUPLERS MUST BE USED TO ACCOMPLISH RADIUS OF CURVATURE LESS THAN 300'

NO CONNECTION FOR THE DISPOSAL OF INDUSTRIAL WASTES SHALL BE MADE TO SEWERS SHOWN ON THESE DRAWINGS UNTIL A PERMIT FOR INDUSTRIAL WASTEWATER DISCHARGE HAS BEEN ISSUED BY THE SANITATION DISTRICTS FOR SAID CONNECTION.

BEFORE BREAKING INTO OR CONSTRUCTION ON A COUNTY SANITATION DISTRICT SEWER AND PRIOR TO FINAL ACCEPTANCE OF THE PROJECT, SANITATION DISTRICT INSPECTOR SHALL BE NOTIFIED BY PHONE (805) 942-5757 SO THAT REQUIRED INSPECTION CAN BE MADE.



CHIMNEY BASE DETAILS FOR A.B.S.C.P. ALL.

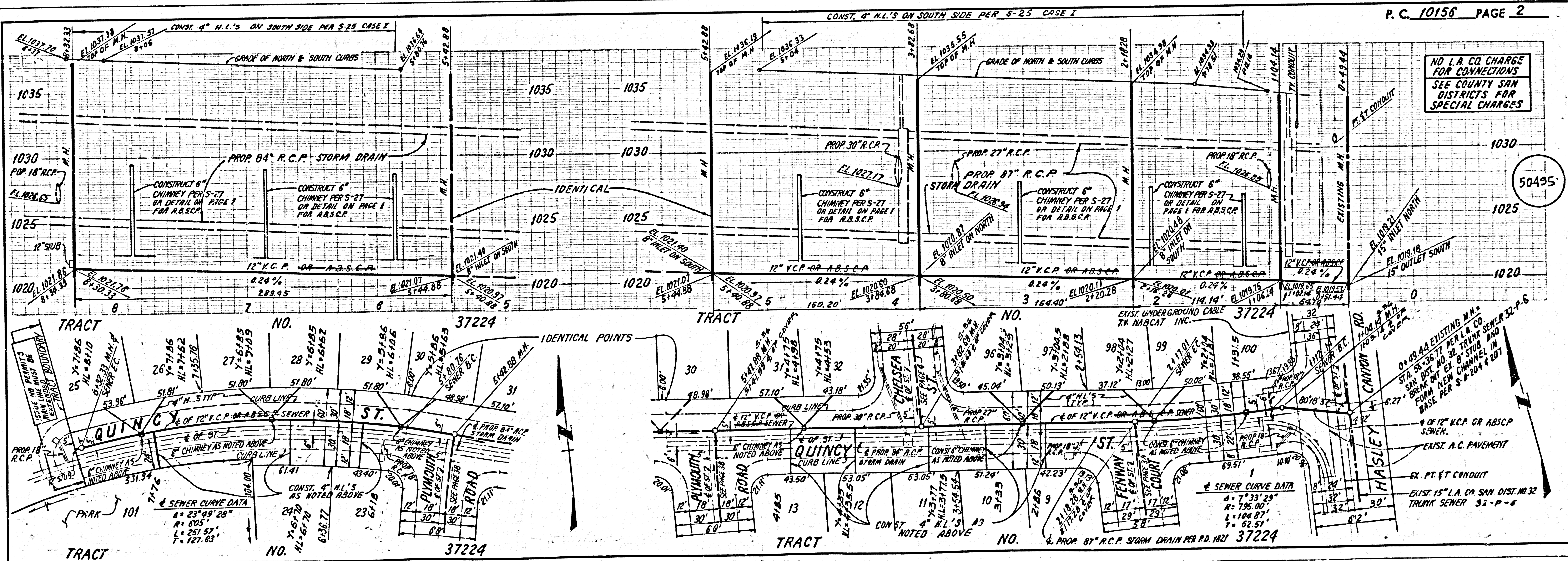
NO SCALE

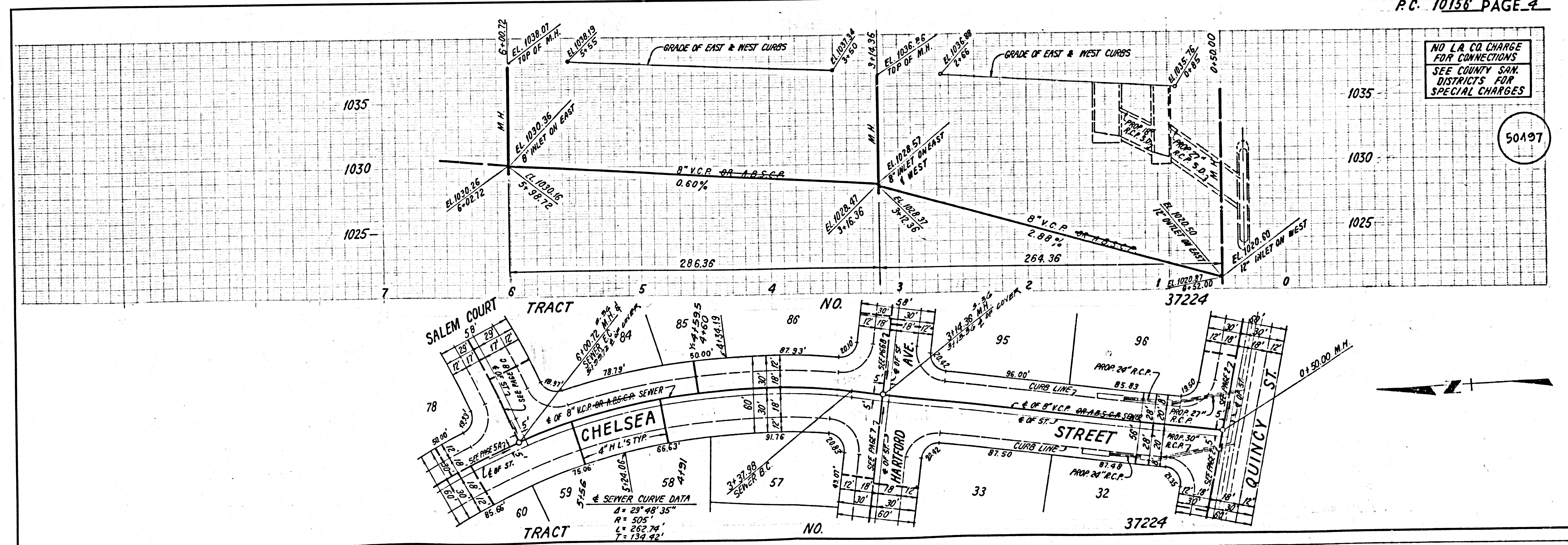
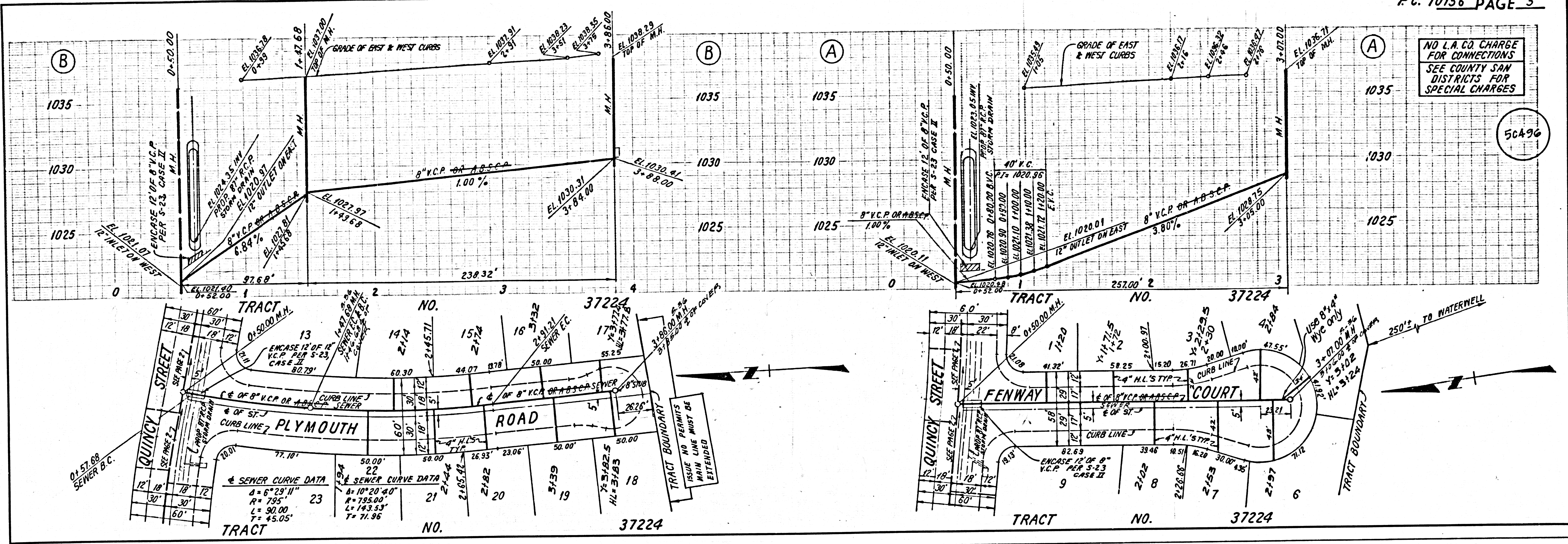
GENERAL NOTES:

1. ELEVATIONS ARE IN FEET ABOVE U.S.C. & G.S. MEAN LEVEL DATUM OF 1929.
2. NO REVISIONS SHALL BE MADE IN THESE PLANS WITHOUT THE APPROVAL OF THE COUNTY ENGINEER.
3. NO REPRESENTATIVE OF THE COUNTY ENGINEER WILL SURVEY OR LAY OUT ANY PORTION OF THE WORK.
4. GRADES TO WHICH THIS IMPROVEMENT IS TO BE CONSTRUCTED ARE SHOWN ON PLANS AND PROFILES. GRADE POINTS FOR TOP OF CURVE, CENTER LINE OF STREETS, OR CENTER LINE OF ALLEYS ARE SHOWN BY CIRCLES ON PROFILES. AT ALL POINTS BETWEEN DESIGNATED POINTS THE GRADE SHALL BE ESTABLISHED SO AS TO CONFORM TO A STRAIGHT LINE UNLESS OTHERWISE DESIGNATED.
5. THE PRIVATE ENGINEER SHALL FURNISH THE COUNTY ENGINEER WITH GRADE SHEETS AND STATIONINGS FOR ALL HOUSE LATERALS AND "Y" OR "T" BRANCHES AND SHALL PROVIDE STAKES FOR THEM AT THEIR PROPOSED LOCATIONS WITH STATIONINGS PLAINLY MARKED. ALL HOUSE LATERALS SHALL BE CONSTRUCTED IN A STRAIGHT ALIGNMENT AT RIGHT ANGLES FROM THE MAIN LINE SEWER EXCEPT AS SHOWN ON THE PLANS. HOUSE LATERALS FROM CHIMNEYS SHALL NOT HAVE AN ANGLE OF LESS THAN 45° WITH THE MAIN LINE SEWER. ANY CHANGE IN ALIGNMENT SHALL BE REQUESTED BY WRITING BY THE PRIVATE ENGINEER.
6. THE PRIVATE ENGINEER SHALL FURNISH THE HOUSE LATERAL DEPTH AT THE EDGE OF A.W. LINE BELOW THE FINISHED SURFACE ELEVATION FOR EACH HOUSE LATERAL ON THE GRADE SHEET.
7. BEFORE WORK CAN BE STARTED, THE CONTRACTOR MUST OBTAIN A PERMIT TO EXCAVATE IN COUNTY STREETS FROM THE L.A. COUNTY ROAD DEPT., DISTRICT OFFICE NO. 5, AND PAY A FEE TO THE COUNTY ENGINEER, 800 S. VERNON AVENUE, LOS ANGELES, CA 90004, TO COVER THE COST OF CONSTRUCTION INSPECTION AND RECORD PLANS.
8. IF WORK IS TO BE DONE IN A STATE HIGHWAY, A PERMIT MUST BE OBTAINED FROM THE STATE OF CALIFORNIA, DIVISION OF HIGHWAYS, 120 SOUTH BRIDGE STREET, LOS ANGELES, CALIFORNIA.
9. APPROVAL OF THE PLAN BY THE COUNTY OF LOS ANGELES DOES NOT CONSTITUTE A REPRESENTATION AS TO THE ACCURACY OF THE LOCATION OF OR THE EXISTENCE OR NON-EXISTENCE OF ANY UNDERGROUND UTILITY PIPE, OR STRUCTURE WITHIN THE LIMITS OF THIS PROJECT. THIS NOTE APPLIES TO ALL PAGES.
10. REFER TO SECTION 116.41 OF THE STANDARD SPECIFICATIONS, REGARDING SAFETY ORDERING.
11. PRIOR TO THE ISSUANCE OF THE REQUIRED SEWER CONSTRUCTION PERMIT, THE CONTRACTOR SHALL OBTAIN AND FILE WITH THE COUNTY ENGINEER COPIES OF A PERMIT TO EXCAVATE COUNTY STREETS FROM THE LOS ANGELES COUNTY ROAD DEPARTMENT, A PERMIT FOR EXCAVATIONS AND TRENCHES FROM THE STATE OF CALIFORNIA, DIVISION OF INDUSTRIAL SAFETY AND A CERTIFICATE OF WORKERS COMPENSATION INSURANCE WITH THE DEPARTMENT OF COUNTY ENGINEER, 800 SOUTH VERNON, RM. 406, LOS ANGELES, CALIFORNIA 90004, NAMED AS THE CONTRACTOR'S ATTORNEY HOLDER TO BE NOTIFIED 30 DAYS PRIOR TO CANCELLATION OF POLICY.

CONSTRUCTION NOTES:

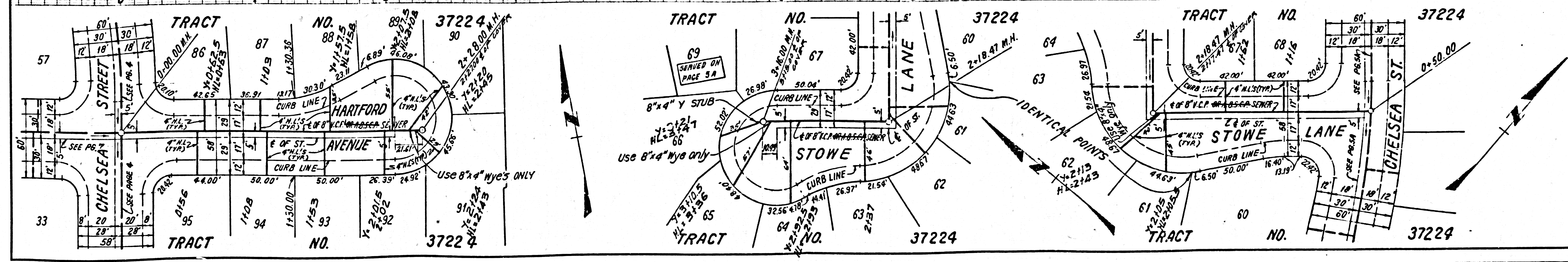
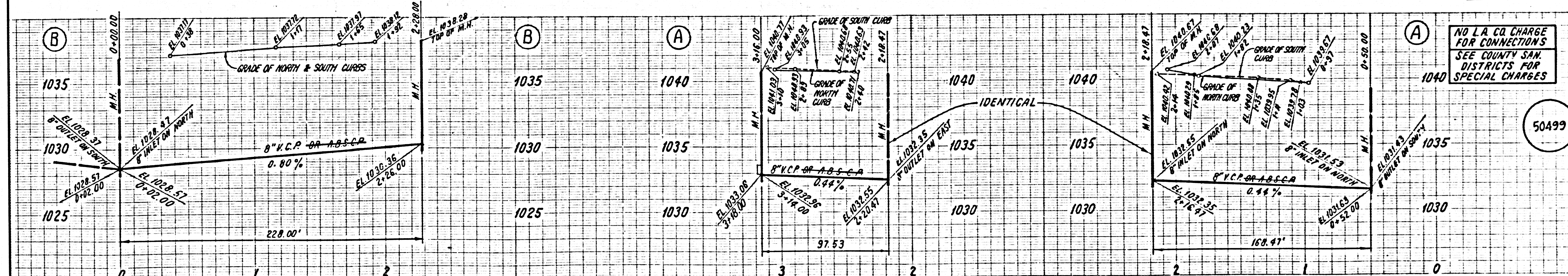
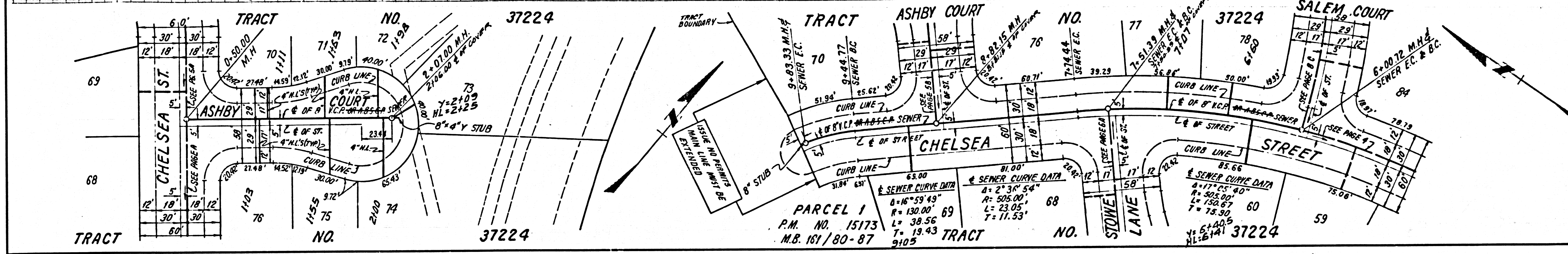
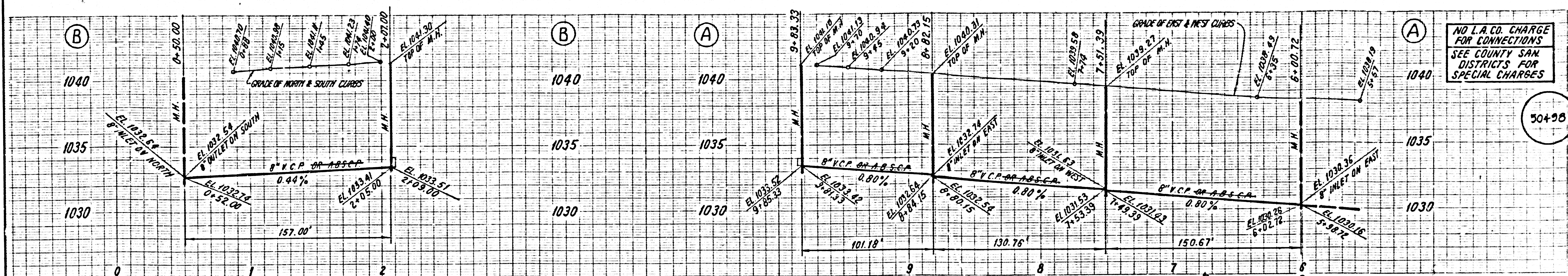
1. WORK SHALL BE CONSTRUCTED ACCORDING TO THE STANDARD SPECIFICATIONS FOR PUBLIC WORKS CONSTRUCTION (1982 EDITION WITH 82 SUPPLEMENTS) AND COUNTY ENGINEER SPECIAL PROVISIONS FOR THE CONSTRUCTION OF SANITARY SEWERS DATED SEP. 27, 1978.
2. THE CONTRACTOR SHALL NOTIFY THE ENVIRONMENTAL DEVELOPMENT DIVISION BY TELEPHONE, 726-2188, AT LEAST TWENTY-FOUR HOURS BEFORE STARTING ANY WORK UNDER THIS CONTRACT.
3. HOUSE LATERALS TO BE CONSTRUCTED WITH INVERTS AT PROPERTY LINE 4 FEET BELOW CURB GRADE EXCEPT AS NOTED.
4. WYE OR TEE BRANCHES MAY BE USED FOR CONNECTIONS TO MAINLINE SEWERS EXCEPT AS NOTED.
5. ALL WYE BRANCHES ONLY MAY BE USED FOR CONNECTION TO MAINLINE SEWERS PER 116.4.1 C.P. IS USED.
6. ALL STRUCTURES SHALL BE ESTHETIC BRICK MANHOLES PER 5-3 EXCEPT AS NOTED.
7. PROVIDE STAKES ON THE PROPERTY LINE OR PROPERTY LINES PRODUCED AT RIGHT ANGLES TO THE SEWER LINE AT THE CENTER LINE OF EACH MANHOLE.
8. MANHOLE TOPS IN UNIMPROVED RIGHTS OF WAY TO BE SIX INCHES ABOVE FINISHED GRADE.
9. WITHIN 6" CLAY PIPE JOINTS SHALL BE TYPE "1" OR "2" PER STANDARD SPECIFICATIONS SECTION 208-8.
10. IF 12" OR 18" HOLE IS WITHIN THREE FEET OF THE SEWER, THE SEWER SHALL BE ENCASED, PER 208-8.2 CASE 1, TWO FEET ON EACH SIDE FROM THE POINT OF INTERFERENCE.
11. IF DURING THE COURSE OF CONSTRUCTION IT IS DETERMINED THAT THERE IS LESS THAN FOUR FEET OF COVER OVER THE TOP OF A MAIN LINE OR HOUSE LATERAL BETWEEN WHICH IS NOT INDICATED ON THE PLANS, THE PIPE SHALL BE ENCASED PER 208-8.2 CASE 1 UNLESS OTHERWISE APPROVED BY THE COUNTY ENGINEER.
12. ALL JOINTS BETWEEN CAST IRON PIPE AND WITHIN 6" CLAY PIPE SHALL BE MADE WITH A RUBBER SLEEVE JOINT, TYPE "1" OR "2" (WITH SLEEVE IF NECESSARY) PER STANDARD SPECIFICATIONS SECTION 208-8 WITH APPROVED FITTINGS OR DETAILS ON PAGE 1 FOR A.B.S.C.P.
13. SEWERS TO BE TESTED FOR LEAKAGE PER SECTION 208.1.4 OF THE STANDARD SPECIFICATIONS AND SPECIAL PROVISIONS.
14. REINFORCE ALL TRENCHES WITH PAVED AREAS TO MEET L.A. COUNTY ROAD DEPT. OR CALIFORNIA STATE HIGHWAY REQUIREMENTS IN ACCORDANCE WITH PERMITS.
15. FULL COMPLIANCE WITH SECTION 208-8.3 OF THE SPECIAL PROVISIONS WILL BE REQUIRED FOR BACKFILL IN STREETS. CERTIFICATION OF BACKFILL COMPACTION AND SAND EQUIVALENTS BY A QUALIFIED, REGISTERED TESTING LABORATORY SHALL BE PROVIDED BY THE CONTRACTOR PRIOR TO THE ISSUANCE OF A CERTIFICATE OF PARTIAL ACCEPTANCE.
16. SPECIAL BACKFILL IN EASEMENT CONSTRUCTION: (A) BACKFILL TRENCH AND REPLACE OTHER EARTH SO AS TO ACHIEVE THE NATURAL OR FINISHED GRADES AND SLOPES SHOWN ON THE GRADING PLAN APPROVED FOR THIS DEVELOPMENT BY THE BUILDING AND SAFETY DIVISION. (B) ALL BACKFILL AND EARTH REPLACEMENT SHALL BE COMPACTED TO A MINIMUM OF 90% OF MAXIMUM DENSITY PER A.S.T.M. METHOD OF TEST DENSITY AS MODIFIED. ACCEPTABLE CERTIFICATION OF SUCH COMPACTION SHALL BE SUBMITTED TO THE ENVIRONMENTAL DEVELOPMENT DIVISION.



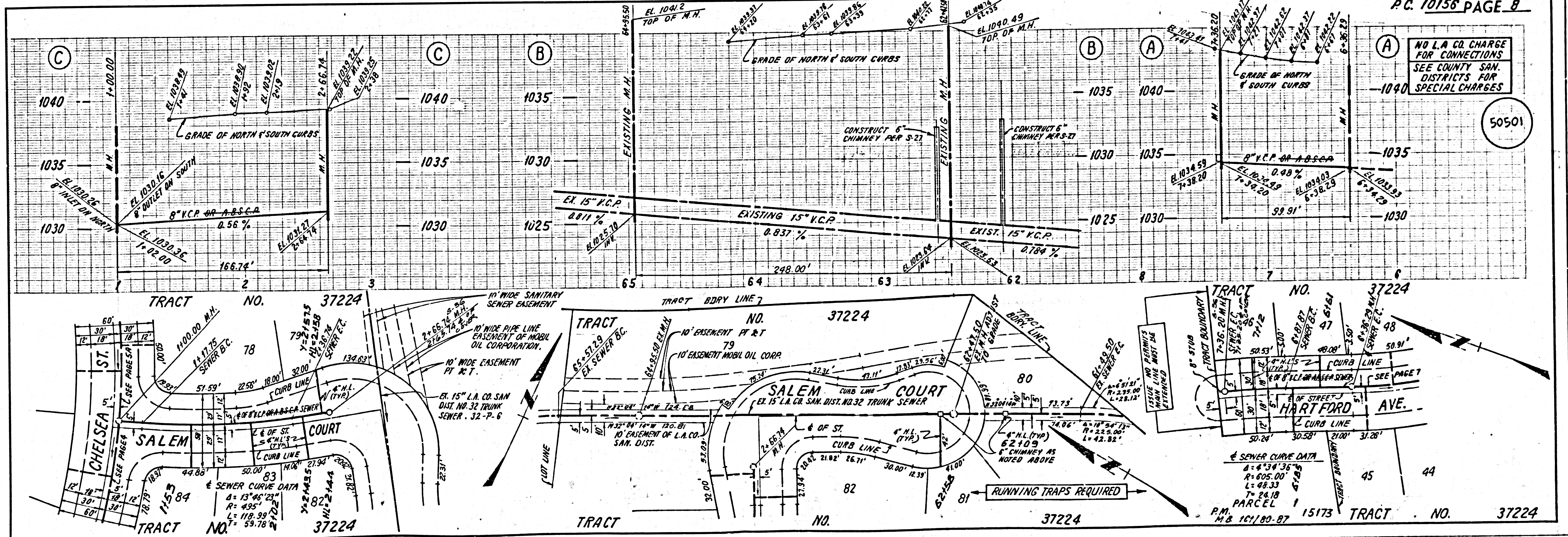
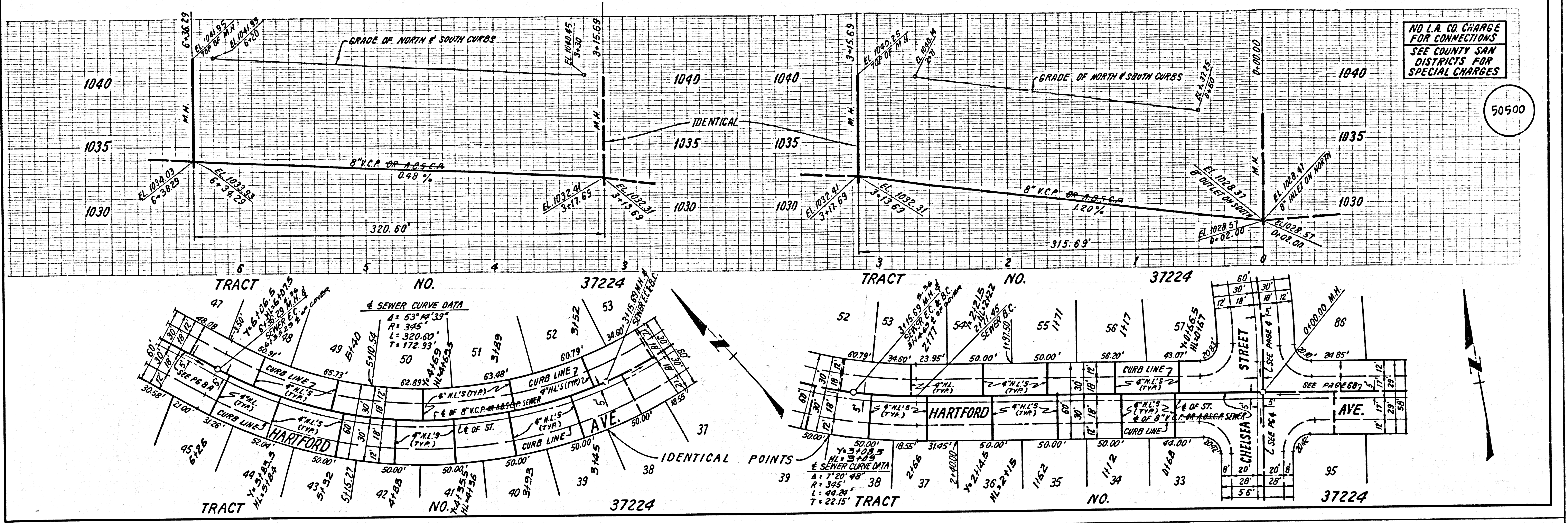


50496

50497



3 20101 29 ASSISE ON TRACT



4 22101 29 4557E ON TRACT