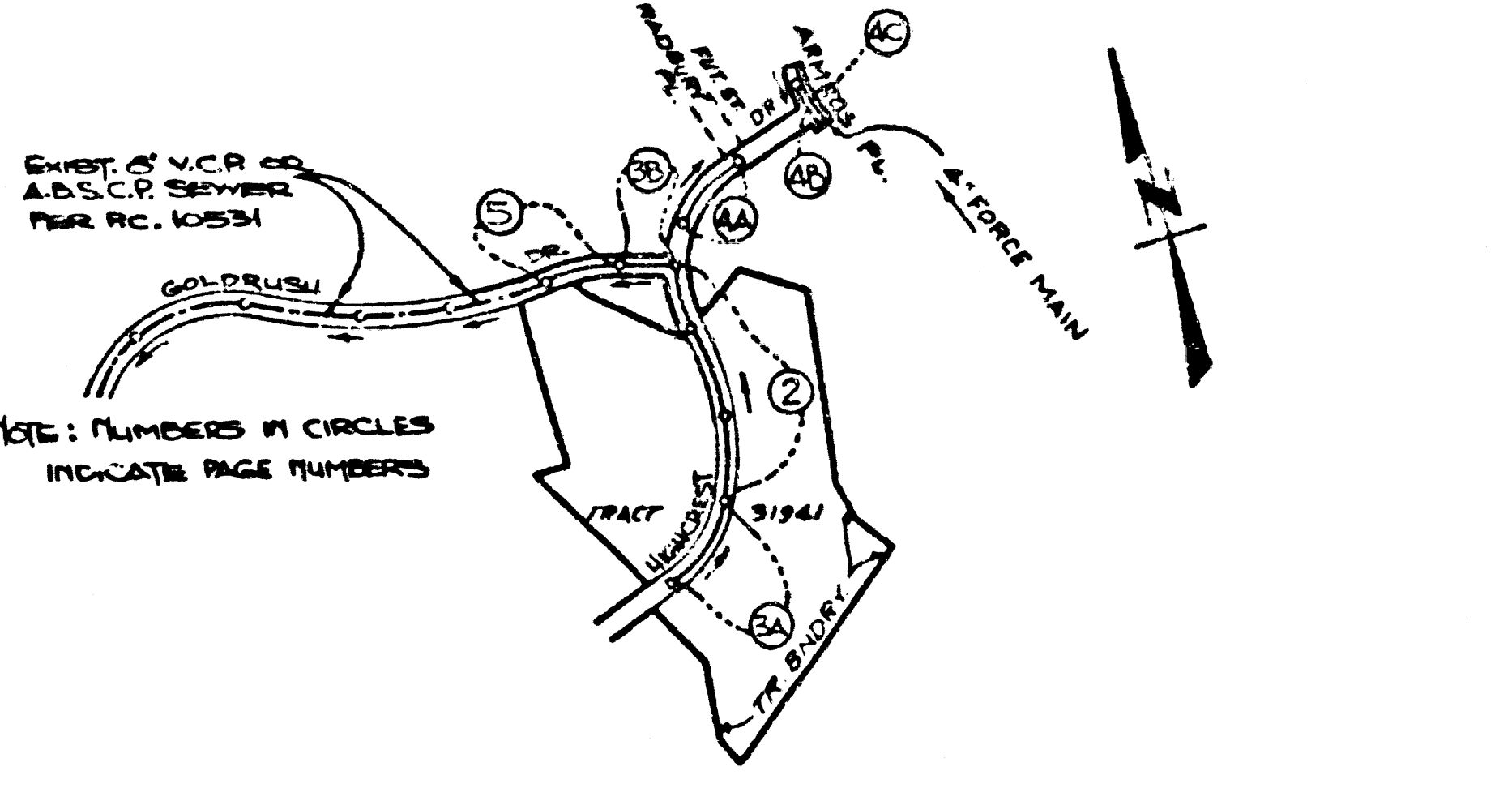


B.M. CG 3011 ELEV. 225.550
 L & T IN S END CB 44 FT 3 +
 50 FT W 9L INT GRAND AVE +
 + DIAMOND BAR BLVD. (M&D B.M. 12)
 OTTERBEIN QUAD. 1915

REVISION NO. 1	
PAGE 1	REVISE FROM PAGE 1
PAGE 2	RELOCATE MAINLINE IN GOLDEN DR. TO SOUTH SIDE OF STREET & CHANGE SLOPE FROM 1:110 TO 1:104.81
PAGE 3B	RELOCATE MAINLINE IN GOLDEN DR. TO SOUTH SIDE OF STREET & FROM STA. 304.24 TO 354.00
PAGE 5	RELOCATE MAINLINE IN GOLDEN DR. TO SOUTH SIDE OF STREET & FROM STA. 304.24 TO 354.00
APPROVED BY: <i>[Signature]</i> DEPT. OF PUBLIC WORKS DATE: 6/12/83	
REVISION NO. 2	
PAGE 2	REVISE CURB GRADES & VERTICAL DESIGN OF SEWER MAINLINE FROM STA. 110.00 TO 2130.31 WITHIN HIGHCREST DRIVE
PAGE 3A	REVISE CURB GRADES & VERTICAL DESIGN OF SEWER MAINLINE FROM STA. 2130.31 TO 11+27.40 WITHIN HIGHCREST DRIVE
APPROVED BY: <i>[Signature]</i> DEPT. OF PUBLIC WORKS DATE: 7/11/87	



INDEX MAP
 TRACT NO. 31941
 P.C. 10150
 SCALE 1"=50'

PRIVATE ENGINEER NOTICE TO CONTRACTORS

The existence and location of all existing utility poles or structures shown on these plans are shown on the ground utility records. To the best of our knowledge and belief, the same are shown in accordance with the records. The contractor shall take all necessary precautionary measures to protect the utility lines shown and any other lines not of record or not shown on these plans.

[Signature]
 Registered Engineer R.C.E. 19233

NO CONNECTION FOR THE DISPOSAL OF INDUSTRIAL WASTES SHALL BE MADE TO SEWERS SHOWN ON THESE DRAWINGS UNTIL A PERMIT FOR INDUSTRIAL WASTEWATER DISCHARGE HAS BEEN ISSUED BY THE SANITATION DISTRICTS FOR SAID CONNECTION.

BEFORE BREAKING INTO OR CONSTRUCTION ON A COUNTY SANITATION DISTRICT SEWER AND PRIOR TO FINAL ACCEPTANCE OF THE PROJECT, SANITATION DISTRICT INSPECTOR 1 SHALL BE NOTIFIED BY PHONE 962-8605, SO THAT REQUIRED INSPECTION CAN BE MADE.

CONSTRUCTION NOTES CONT'D.

- FULL COMPLIANCE WITH PART II OF THE SPECIAL PROVISIONS IS REQUIRED FOR THE INSTALLATION OF A.B.S. COMPOSITE PIPES.
- MANHOLE WATER TIEP GASKETS & CLAMPS ARE REQUIRED FOR THE CONNECTION OF A.B.S. COMPOSITE PIPES TO MANHOLE STRUCTURES.
- A.B.S. SOLID WALL PIPE MUST BE USED FOR TIE & HOUSE LATERAL CONNECTIONS TO A.B.S. COMPOSITE MAINLINE SEWER PIPES.
- A.B.S. COMPOSITE PIPE SHALL BE SEDED IN CONFORMANCE WITH THE TABLE IN SECTION B-31 OF PART II OF THE SPECIAL PROVISIONS.
- THREE DEGREE DEFLECTION COUPLERS ARE REQUIRED FOR RADIIUS OF CURVATURES LESS THAN 500 FEET WITHIN USING OF A.B.S.C.P.
- NO CONNECTIONS FOR DISPOSAL OF INDUSTRIAL WASTES IS ALLOWED IF A.B.S. COMPOSITE PIPE IS USED.
- SEWER LINE CURVATURE SHALL NOT BE ACHIEVED BY PULLING OF JOINTS OR BENDING PIPE SHOW WITHIN USING PLASTIC PIPE INCLUDING A.B.S. COMPOSITE PIPES.

ISSUE NO PERMITS UNTIL OUTFALL SEWER P.C. 10231 IS BUILT AND ACCEPTED BY L.A. COUNTY FOR PUBLIC USE IN REGARD TO PAGE 4.

ISSUE NO PERMITS UNTIL OUTFALL SEWER P.C. 10231 IS BUILT AND ACCEPTED BY L.A. COUNTY FOR PUBLIC USE IN REGARD TO PAGES 2, 3A, 3B AND 5.

GENERAL NOTES:

- ELEVATIONS ARE IN FEET ABOVE U.S.C. & G.S. MEAN LEVEL DATUM OF 1929.
- NO REVISIONS SHALL BE MADE IN THESE PLANS WITHOUT THE APPROVAL OF THE COUNTY ENGINEER.
- NO REPRESENTATIVE OF THE COUNTY ENGINEER WILL SURVEY OR LAY OUT ANY PORTION OF THE WORK.
- GRADES TO WHICH THE IMPROVEMENTS ARE TO BE CONSTRUCTED ARE SHOWN ON PLANS AND PROFILES GRADE POINTS FOR TOP OF CURBS, CENTER LINE OF STREETS, OR CENTER LINE OF ALLEYS ARE SHOWN BY CIRCLES ON PROFILES AT ALL POINTS BETWEEN DESIGNATED POINTS THE GRADE SHALL BE ESTABLISHED SO AS TO CONFORM TO A STRAIGHT LINE DRAWN BETWEEN SAID DESIGNATED POINTS.
- THE PRIVATE ENGINEER SHALL FURNISH THE COUNTY ENGINEER WITH GRADE SHEETS AND STATIONING FOR ALL HOUSE LATERALS AND "T" OR "Y" BRANCHES AND SHALL INDICATE STAKES FOR THEM AT THEIR PROPER LOCATIONS WITH STATIONING PLAINS MARKED ALL HOUSE LATERALS SHALL BE CONSTRUCTED AT RIGHT ANGLES ALONG THE MAIN LINE SEWER EXCEPT AS SHOWN ON THE PLANS. HOUSE LATERALS SHALL NOT HAVE AN ANGLE OF LESS THAN 45° WITH THE MAIN LINE SEWER. ANY CHANGE IN ALIGNMENT SHALL BE REQUESTED IN WRITING BY THE PRIVATE ENGINEER.
- THE PRIVATE ENGINEER SHALL FURNISH THE HOUSE LATERAL DEPTH AT THE PROPERTY LINE BELOW THE TOP OF CURB ELEVATION FOR EACH HOUSE LATERAL ON THE GRADE SHEET.
- BEFORE WORK CAN BE STARTED THE CONTRACTOR MUST OBTAIN A PERMIT TO EXCAVATE IN COUNTY STREETS FROM THE L.A. COUNTY ROAD DEPT. DISTRICT OFFICE NO. 1 AND PAY A FEE TO THE COUNTY ENGINEER 580 S. VERMONT AVENUE, LOS ANGELES, CA 90005 TO COVER THE COST OF CONSTRUCTION INSPECTION AND RECORD PLANS.
- IF WORK IS TO BE DONE IN A STATE HIGHWAY A PERMIT MUST BE OBTAINED FROM THE STATE OF CALIFORNIA, DIVISION OF HIGHWAYS, 130 SOUTH SPRING STREET, LOS ANGELES, CALIFORNIA.
- APPROVAL OF THIS PLAN BY THE COUNTY OF LOS ANGELES DOES NOT CONSTITUTE A REPRESENTATION AS TO THE ACCURACY OF THE LOCATION OF OR THE EXISTENCE OR NON-EXISTENCE OF ANY UNDERGROUND UTILITY PIPE OR STRUCTURE WITHIN THE LIMITS OF THIS PROJECT. THIS NOTE APPLIES TO ALL PAGES.
- REFER TO SECTION 7.10.41 OF THE STANDARD SPECIFICATIONS REGARDING SAFETY ORDERS.
- PRIOR TO THE ISSUANCE OF THE REQUIRED SEWER CONSTRUCTION PERMIT THE CONTRACTOR SHALL OBTAIN AND FILE WITH THE COUNTY ENGINEER OFFICE A PERMIT TO EXCAVATE IN COUNTY STREETS FROM THE LOS ANGELES COUNTY ROAD DEPARTMENT. A PERMIT FOR EXCAVATIONS AND TRENCHES FROM THE STATE OF CALIFORNIA, DIVISION OF INDUSTRIAL SAFETY AND CERTIFICATE OF WORKERS COMPENSATION INSURANCE WITH THE DEPARTMENT OF COUNTY ENGINEER 580 SOUTH VERMONT, RM. 402, LOS ANGELES, CALIFORNIA 90005. NAMED AS THE CERTIFICATE HOLDER TO BE NOTIFIED 30 DAYS PRIOR TO CANCELLATION OF POLICY.

CONSTRUCTION NOTES:

- WORK SHALL BE CONSTRUCTED ACCORDING TO THE STANDARD SPECIFICATIONS FOR PUBLIC WORKS CONSTRUCTION 1988 EDITION WITH THE SUPPLEMENT AND COUNTY ENGINEER SPECIAL PROVISIONS FOR THE CONSTRUCTION OF SANITARY SEWERS DATED "SEPT. 21, 1976" AND SHALL BE PROSECUTED ONLY IN THE PRESENCE OF THE COUNTY ENGINEER.
- THE CONTRACTOR SHALL NOTIFY THE ENVIRONMENTAL DEVELOPMENT DIVISION BY TELEPHONE 738-2198 AT LEAST TWENTY-FOUR HOURS BEFORE STARTING ANY WORK UNDER THIS CONTRACT.
- HOUSE LATERALS TO BE CONSTRUCTED WITH INVERTS AT PROPERTY LINE 6 FEET BELOW CURB GRADE EXCEPT AS NOTED.
- PIPE OR TEE BRANCHES MAY BE USED FOR CONNECTIONS TO MAINLINE SEWERS EXCEPT AS NOTED.
- ALL STRUCTURES SHALL BE EITHER BRICK MANHOLES OR CAST CONCRETE MANHOLES PER 8-36 EXCEPT AS NOTED.
- PROVIDE STAKES ON THE PROPERTY LINE OR PROPERTY LINES PRODUCED AT RIGHT ANGLES TO THE SEWER LINE AT THE CENTER LINE OF EACH MANHOLE.
- MANHOLE TOPS IN UNIMPROVED RIGHTS OF WAY TO BE 20 INCHES ABOVE FINISHED GRADE.
- IF A POWER POLE IS WITHIN THREE FEET OF THE SEWER THE SEWER SHALL BE ENCASED PER 8-22 CASE II TWO FEET ON EACH SIDE FROM THE POINT OF INTERFERENCE.
- IF DURING THE COURSE OF CONSTRUCTION IT IS DETERMINED THAT THERE IS LESS THAN FOUR FEET OF COVER OVER THE TOP OF A MAIN LINE OR HOUSE LATERAL SEWER WHICH IS NOT INDICATED ON THE PLANS, THE PIPE SHALL BE ENCASED PER 8-22 CASE II UNLESS OTHERWISE APPROVED BY THE COUNTY ENGINEER.
- ALL JOINTS BETWEEN CAST IRON PIPE AND VITRIFIED CLAY PIPE SHALL BE MADE WITH A RUBBER GASKET JOINT, TYPE "C" OR "D" WITH GASKETS OF NECESSARY AIR STANCAPE SPECIFICATIONS PER SECTION 8-36.
- ALL JOINTS BETWEEN BRICK MANHOLES AND CAST CONCRETE MANHOLES SHALL BE MADE WITH APPROVED BUTTER JOINTS.
- SEWERS TO BE TESTED FOR LEAKAGE PER SECTION 8-36.4 OF THE STANDARD SPECIFICATIONS AND SPECIAL PROVISIONS.
- RESURFACE ALL TRENCHES WITHIN PAVED AREAS TO MEET L.A. COUNTY ROAD DEPT. OR CALIFORNIA STATE HIGHWAY REQUIREMENTS IN ACCORDANCE WITH PERMITS.
- FULL COMPLIANCE WITH SECTION 308-1.35 OF THE SPECIAL PROVISIONS WILL BE REQUIRED FOR BACKFILL IN STREETS CERTIFICATION OF BACKFILL COMPACTION AND SAND EQUIVALENTS BY A QUALIFIED REGISTERED TESTING LABORATORY SHALL BE PROVIDED BY THE PERMITTEE PRIOR TO THE ISSUANCE OF A CERTIFICATE OF PARTIAL ACCEPTANCE.
- SPECIAL BACKFILL IN PAVEMENT CONSTRUCTION (A) BACKFILL TRENCH AND REPLACE OTHER EARTH SO AS TO ACHIEVE THE NATURAL OR FINISHED GRADES AND SLOPES SHOWN ON THE GRADING PLAN APPROVED FOR THE DEVELOPMENT BY THE BUILDING AND SAFETY DIVISION (B) ALL BACKFILL AND EARTH REPLACE SHALL BE COMPACTED TO A MINIMUM OF 90% OF MAXIMUM DENSITY PER A.S.T.M. 97D. METHOD OF TEST DENSIT 1000 AS MODIFIED ACCEPTABLE CERTIFICATION OF SUCH COMPACTION SHALL BE SUBMITTED TO THE ENVIRONMENTAL DEVELOPMENT DIVISION.

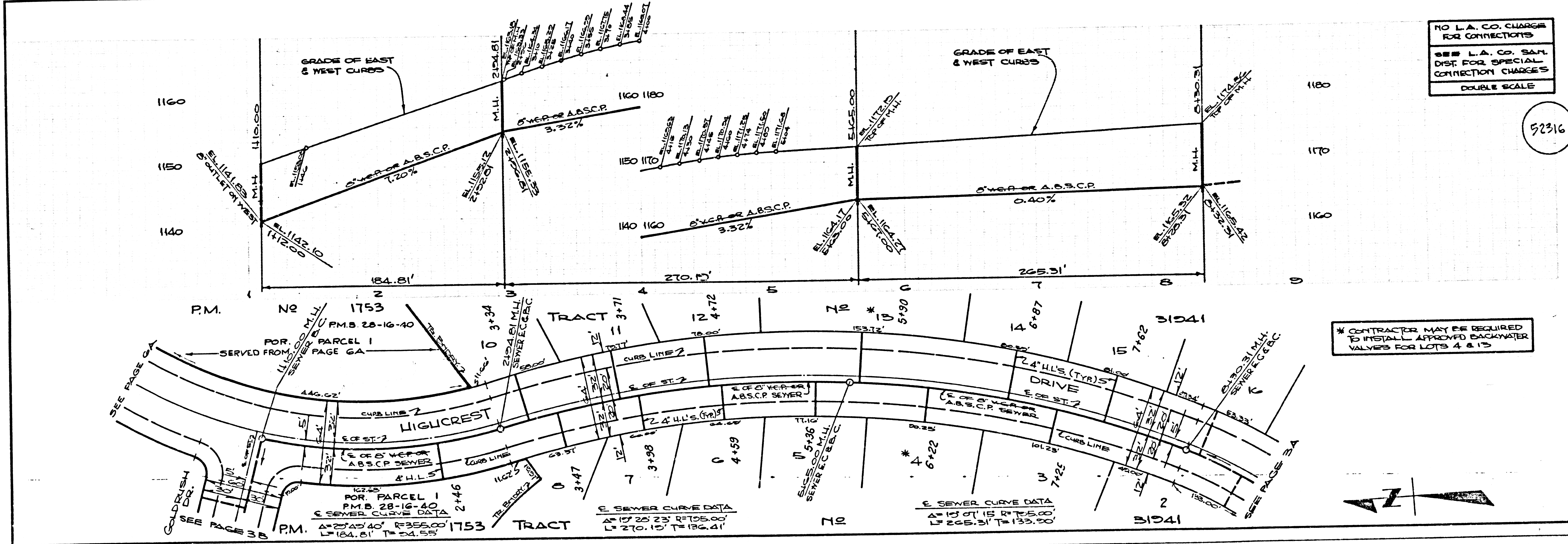
TRACT NO. 31941
PRIVATE CONTRACT NO. 10150

W.S. 30-0,2,3
 3 SHEETS, 5 PAGES
 SCALE: VERT. 1"=4'
 HORIZ. 1"=40'
 PREPARED IN THE OFFICES OF
 LINDA R. WILLIAMS, I.P.C.
 3025 WASHINGTON DRIVE
 SAN JUAN, CA 91105
 REG. C.E. NO. 15233
 JOHN N. SARRACINO

THE FOLLOWING LATEST REVISED STANDARD PLANS ON FILE IN THE OFFICE OF THE COUNTY ENGINEER SHALL APPLY IN THE CONSTRUCTION OF THIS PROJECT:

LEGEND	5-1
MINIMUM PUBLIC SAFETY REQUIREMENTS	5-2
BRICK MANHOLE STD.	5-3
BRICKING FOR SEWER PIPE	5-4
CHAMBER AND ENCASMENT	5-5
WYE OF TEE SUPPORT	5-6
ALLOWABLE TRENCH WIDTH	5-7
LOADING MANHOLE FRAME AND COVER	5-8
NON-REINFORCED PRECAST CONCRETE MANHOLE	5-9
BRICKING, REINFORCED PRECAST PLASTIC PIPE	5-10
APPROVED SLOPES	5-11
HIGHWAY PROTECTION IN STREET SLOPES	5-12
SPECIAL HOUSE LATERALS	5-13

COUNTY OF LOS ANGELES, CALIFORNIA
 STEPHEN J. KOONCE, COUNTY ENGINEER
 WALTER E. GARRISON, CHIEF ENGINEER
 CO. SAN DIST. NO. 21
 APPROVED *[Signature]*
 APPROVED *[Signature]*
 CHECKED *[Signature]*
 DATE 1/6/83
 SAN DIMAS BLDG. DIST. 1000

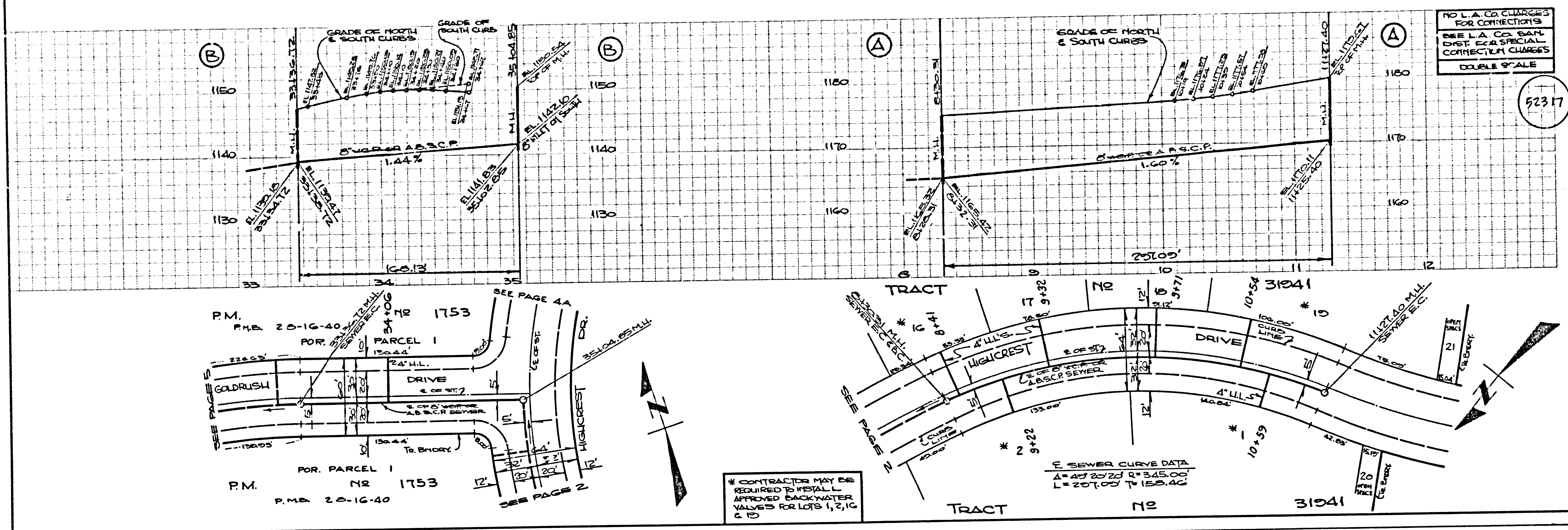


NO L.A. CO. CHARGES FOR CONNECTIONS
 SEE L.A. CO. SAN. DIST. FOR SPECIAL CONNECTION CHARGES
 DOUBLE SCALE

* CONTRACTOR MAY BE REQUIRED TO INSTALL APPROVED BACKWATER VALVES FOR LOTS 4 & 13

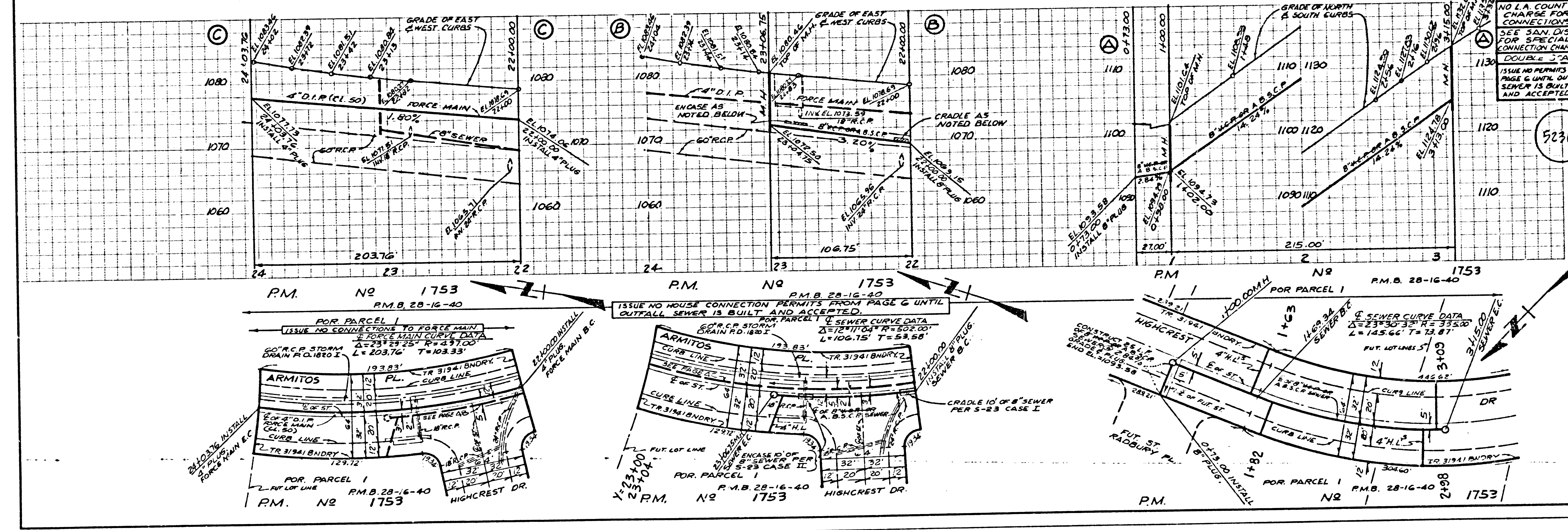
bc 10150

TRACT NO. 31941



NO L.A. CO. CHARGES FOR CONNECTIONS
SEE L.A. COUNTY DIST. FOR SPECIAL CONNECTION CHARGES
DOUBLE SCALE

52317



NO L.A. COUNTY CHARGES FOR CONNECTIONS
SEE SAN. DIST. FOR SPECIAL CONNECTION CHARGES
DOUBLE SCALE
ISSUE NO PERMITS TO PAGE 6 UNTIL OUTFALL SEWER IS BUILT AND ACCEPTED

52318

PC.10159

PC.10159

NO L.A. COUNTY CHARGE FOR CONNECTIONS
SEE L.A. CO. SAN. DIST. FOR SPECIAL CONNECTION CHARGE
DOUBLE SCALE

52319

