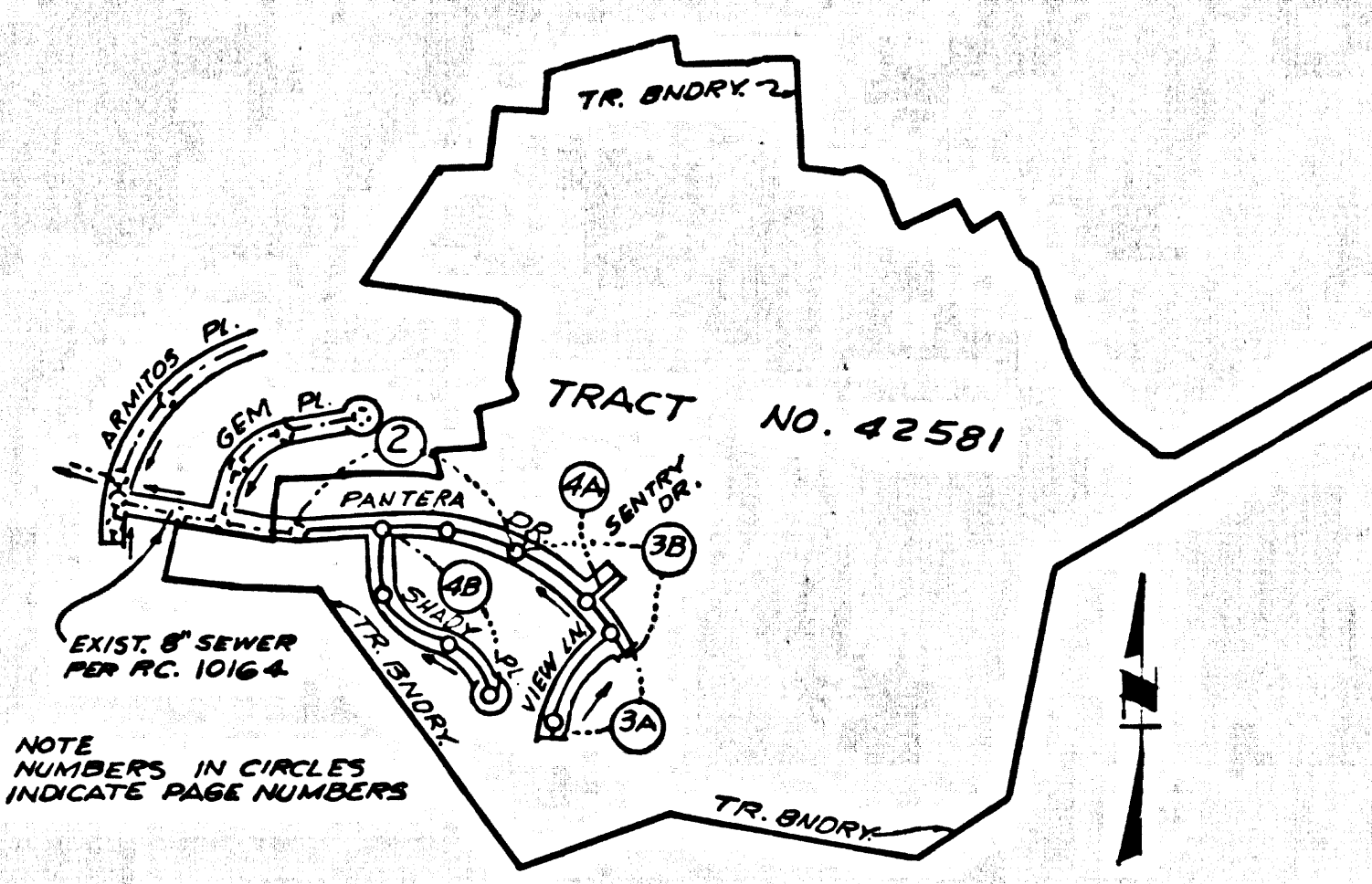


B.M. CG 3311 ELEV. 895.556
 LET IN E END CB 4.4 FT 3.1 96 FT
 IN C/L INT GRAND AVE + DIAMOND
 BAR BLVD (MKD BM C-12)
 OTTERBEIN QUAD. 19 75



INDEX MAP
 TRACT NO. 42581
 P.C. 10160
 SCALE: 1" = 600'

PRIVATE ENGINEERS NOTICE TO CONTRACTORS

The existence and location of any underground utility pipes or structures shown on these plans are obtained by search of the available records. To the best of our knowledge there are no existing utilities except as shown on these plans. The contractor is required to take due precautionary measures to protect the utility lines shown and any other lines not of record or not shown on these plans.

J.N. Sarracino
 Registered Engineer R.C.E. 19233

NO CONNECTION FOR THE DISPOSAL OF INDUSTRIAL WASTES SHALL BE MADE TO SEWERS SHOWN ON THESE DRAWINGS UNTIL A PERMIT FOR INDUSTRIAL WASTEWATER DISCHARGE HAS BEEN ISSUED BY THE SANITATION DISTRICTS FOR SAID CONNECTION.

BEFORE BREAKING INTO OR CONSTRUCTION ON A COUNTY SANITATION DISTRICT SEWER AND PRIOR TO FINAL ACCEPTANCE OF THE PROJECT, SANITATION DISTRICT INSPECTOR SHALL BE NOTIFIED BY PHONE - 962-8605, SO THAT REQUIRED INSPECTION CAN BE MADE.

CONSTRUCTION NOTES CONT'D.

16. FULL COMPLIANCE WITH PART III OF THE SPECIAL PROVISIONS IS REQUIRED FOR THE INSTALLATION OF A.B.S. COMPOSITE PIPE.
17. HANDLE WATER STOP GASKETS & CLAMPS ARE REQUIRED FOR THE CONNECTION OF A.B.S. COMPOSITE PIPE TO MANHOLE STRUCTURES.
18. A.B.S. SOLID WALL PIPE MUST BE USED FOR WYE & HOUSE LATERAL CONNECTIONS TO A.B.S. COMPOSITE MAINLINE SEWER PIPE.
19. A.B.S. COMPOSITE PIPE SHALL BE BEDDED IN CONFORMANCE WITH THE TABLE IN SECTION 2-3.1 OF PART III OF THE SPECIAL PROVISIONS.
20. THREE CORNER DEFLECTION COMPLETS ARE REQUIRED FOR RADIIUS OF CURVATURE LESS THAN 300 FEET MINIMUM RADIUS A.B.S.C.P.
21. NO CONNECTION FOR DISPOSAL OF INDUSTRIAL WASTE IS ALLOWED IF A.B.S. COMPOSITE PIPE IS USED.
22. SEWER LINE CURVATURE SHALL NOT BE ACHIEVED BY PULLING OF JOINTS OR BURELIVE PIPE ENDS WHEN USING PLASTIC PIPE INCLUDING A.B.S. COMPOSITE PIPE.

NOTE: ISSUE NO HOUSE CONNECTION PERMITS UNTIL P.C.'S 10159 & 10164 ARE ACCEPTED.
 NOTE: ISSUE HOUSE CONNECTION PERMITS FOR LOTS 1 & 22 THROUGH 46 FROM P.C. 10164 PAGE 3A.

GENERAL NOTES: DOUBLE SCALE

1. ELEVATIONS ARE IN FEET ABOVE U.S.C. & G.S. SEA LEVEL DATUM OF 1988.
2. NO REVISIONS SHALL BE MADE IN THESE PLANS WITHOUT THE APPROVAL OF THE COUNTY ENGINEER.
3. NO REPRESENTATIVE OF THE COUNTY ENGINEER WILL SURVEY OR LAY OUT ANY PORTION OF THE WORK.
4. GRADES TO WHICH THIS IMPROVEMENT IS TO BE CONSTRUCTED ARE SHOWN ON PLANS AND PROFILES. GRADE POINTS FOR TOP OF CURBS, CENTER LINE OF STREETS, OR CENTER LINE OF ALLEYS ARE SHOWN BY CIRCLES ON PROFILES. AT ALL POINTS BETWEEN DESIGNATED POINTS THE GRADE SHALL BE ESTABLISHED SO AS TO CONFORM TO A STRAIGHT LINE DRAWN BETWEEN SAID DESIGNATED POINTS.
5. THE PRIVATE ENGINEER SHALL FURNISH THE COUNTY ENGINEER WITH GRADE SHEETS AND STATIONING FOR ALL HOUSE LATERALS AND "T" OR "Y" BRANCHES AND SHALL PROVIDE STAKES FOR THEM AT THEIR PROPER LOCATIONS WITH STATIONING PLAINLY MARKED. ALL HOUSE LATERALS SHALL BE CONSTRUCTED IN A STRAIGHT ALIGNMENT AT RIGHT ANGLES FROM THE MAIN LINE SEWER EXCEPT AS SHOWN ON THE PLANS. HOUSE LATERALS FROM CHIMNEYS SHALL NOT HAVE AN ANGLE OF LESS THAN 45° WITH THE MAIN LINE SEWER. ANY CHANGE IN ALIGNMENT SHALL BE REQUESTED IN WRITING BY THE PRIVATE ENGINEER.
6. THE PRIVATE ENGINEER SHALL FURNISH THE HOUSE LATERAL DEPTH AT THE PROPERTY LINE BELOW THE TOP OF CURB ELEVATION FOR EACH HOUSE LATERAL ON THE GRADE SHEET.
7. BEFORE WORK CAN BE STARTED, THE CONTRACTOR MUST OBTAIN A PERMIT TO EXCAVATE IN COUNTY STREETS FROM THE L.A. COUNTY ROAD DEPT., DISTRICT OFFICE NO. 1, AND PAY A FEE TO THE COUNTY ENGINEER, 800 S. VERMONT AVENUE, LOS ANGELES, CALIF. TO COVER THE COST OF CONSTRUCTION INSPECTION AND RECORD PLANS.
8. IF WORK IS TO BE DONE IN A STATE HIGHWAY, A PERMIT MUST BE OBTAINED FROM THE STATE OF CALIFORNIA, DIVISION OF HIGHWAYS, 720 SOUTH SPRING STREET, LOS ANGELES, CALIFORNIA.
9. APPROVAL OF THIS PLAN BY THE COUNTY OF LOS ANGELES DOES NOT CONSTITUTE A REPRESENTATION AS TO THE ACCURACY OF THE LOCATION OF OR THE EXISTENCE OR NON-EXISTENCE OF ANY UNDERGROUND UTILITY PIPE, OR STRUCTURE WITHIN THE LIMITS OF THIS PROJECT. THE NOTE APPLIES TO ALL PAGES.
10. REFER TO SECTION 2-3.4.1 OF THE STANDARD SPECIFICATIONS, REGARDING SAFETY ORDER.
11. PRIOR TO THE ISSUANCE OF THE REQUIRED SEWER CONSTRUCTION PERMIT, THE CONTRACTOR SHALL OBTAIN AND FILE WITH THE COUNTY ENGINEER COPIES OF A PERMIT TO EXCAVATE IN COUNTY STREETS FROM THE LOS ANGELES COUNTY ROAD DEPARTMENT, A PERMIT FOR EXCAVATIONS AND TRENCHES FROM THE STATE OF CALIFORNIA, DIVISION OF INDUSTRIAL SAFETY AND A CERTIFICATE OF WORKERS COMPENSATION INSURANCE WITH THE DEPARTMENT OF COUNTY ENGINEER, 800 SOUTH VERMONT, RM. 408, LOS ANGELES, CALIFORNIA 90008, NAMED AS THE CERTIFICATE HOLDER TO BE NOTIFIED IN 5 DAYS PRIOR TO CANCELLATION OF POLICY.

CONSTRUCTION NOTES:

1. WORK SHALL BE CONSTRUCTED ACCORDING TO THE STANDARD SPECIFICATIONS FOR PUBLIC WORKS CONSTRUCTION (FIRST EDITION WITH SUPPLEMENTS) AND COUNTY ENGINEER SPECIAL PROVISIONS FOR THE CONSTRUCTION OF SANITARY SEWERS DATED - MARCH, 1978 - AND SHALL BE PROTECTED ONLY IN THE PRESENCE OF THE COUNTY ENGINEER.
2. THE CONTRACTOR SHALL NOTIFY THE ENVIRONMENTAL DEVELOPMENT DIVISION BY TELEPHONE, 720-2381, AT LEAST TWENTY-FOUR HOURS BEFORE STARTING ANY WORK UNDER THE CONTRACT.
3. HOUSE LATERALS TO BE CONSTRUCTED WITH INHERITS AT PROPERTY LINE 8 FEET BELOW CURB GRADE EXCEPT AS NOTED.
4. WYE OR TEE BRANCHES MAY BE USED FOR CONNECTIONS TO MAINLINE SEWERS EXCEPT AS NOTED.
5. WYE BRANCHES SHALL ONLY BE USED FOR CONNECTIONS TO MAINLINE SEWERS IF A.B.S. C.P. IS USED.
6. ALL STRUCTURES SHALL BE BUILT TO MEET THE REQUIREMENTS OF THE STANDARD SPECIFICATIONS AND SPECIAL PROVISIONS.
7. PROVIDE STAKES ON THE PROPERTY LINE OR PROPERTY LINES PRODUCED AT RIGHT ANGLES TO THE SEWER LINE AT THE CENTER LINE OF EACH MANHOLE.
8. MANHOLE TOPS IN UNIMPROVED RIGHTS OF WAY TO BE 88 INCHES ABOVE FINISHED GRADE.
9. WITHIN CLAY PIPE JOINTS SHALL BE TYPE "O" OR "N" PER STANDARD SPECIFICATIONS SECTION 206.2.
10. IF A POWER POLE IS WITHIN THREE FEET OF THE SEWER, THE SEWER SHALL BE ENCASED, PER 8-2.2 CASE 2, TWO FEET ON EACH SIDE FROM THE POINT OF INTERFERENCE.
11. IF DURING THE COURSE OF CONSTRUCTION IT IS DETERMINED THAT THERE IS LESS THAN FOUR FEET OF COVER OVER THE TOP OF A MAIN LINE OR HOUSE LATERAL SEWER WHICH IS NOT INDICATED ON THE PLANS, THE PIPE SHALL BE ENCASED PER 8-2.2 CASE 2 UNLESS OTHERWISE APPROVED BY THE COUNTY ENGINEER.
12. ALL JOINTS BETWEEN CAST IRON PIPE AND WITHIN CLAY PIPE SHALL BE MADE WITH A RUBBER BELLOW JOINT, TYPE "O" OR "N" (WITH BUSHING IF NECESSARY) PER STANDARD SPECIFICATIONS SECTION 206.2.
13. ALL TRENCHES SHALL BE PROTECTED BY SHIELDING OR SHIELDING SHALL BE PROVIDED BY THE PERMITEE PRIOR TO THE ISSUANCE OF A CERTIFICATE OF PARTIAL ACCEPTANCE.
14. REINFORCE ALL TRENCHES WITHIN PAVED AREAS TO MEET L.A. COUNTY ROAD DEPT. OR CALIFORNIA STATE HIGHWAY REQUIREMENTS IN ACCORDANCE WITH PERMITS.
15. FULL COMPLIANCE WITH SECTION 206-1.5 OF THE SPECIAL PROVISIONS WILL BE REQUIRED FOR BACKFILL IN STREETS. CERTIFICATION OF BACKFILL COMPOSITION AND SAND EQUIVALENTS BY A QUALIFIED, REGISTERED TESTING LABORATORY SHALL BE PROVIDED BY THE PERMITEE PRIOR TO THE ISSUANCE OF A CERTIFICATE OF PARTIAL ACCEPTANCE.
16. SPECIAL BACKFILL IN EASEMENT CONSTRUCTION: (A) BACKFILL TRENCH AND REPLACE OTHER EARTH SO AS TO ACHIEVE THE NATURAL FINISHED GRADES AND SLOPES SHOWN ON THE GRADING PLAN APPROVED FOR THIS DEVELOPMENT BY THE BUILDING AND SAFETY DIVISION. (B) ALL BACKFILL AND EARTH REPLACES SHALL BE COMPACTED TO A MINIMUM OF 90% OF MAXIMUM DENSITY PER A.S.T.M. STD. METHOD OF TEST D9597 AS MODIFIED. ACCEPTABLE CERTIFICATION OF SUCH COMPACTION SHALL BE SUBMITTED TO THE ENVIRONMENTAL DEVELOPMENT DIVISION.

PROFILE, ALIGNMENT AND GRADE OF
SANITARY SEWERS
 TO BE CONSTRUCTED IN

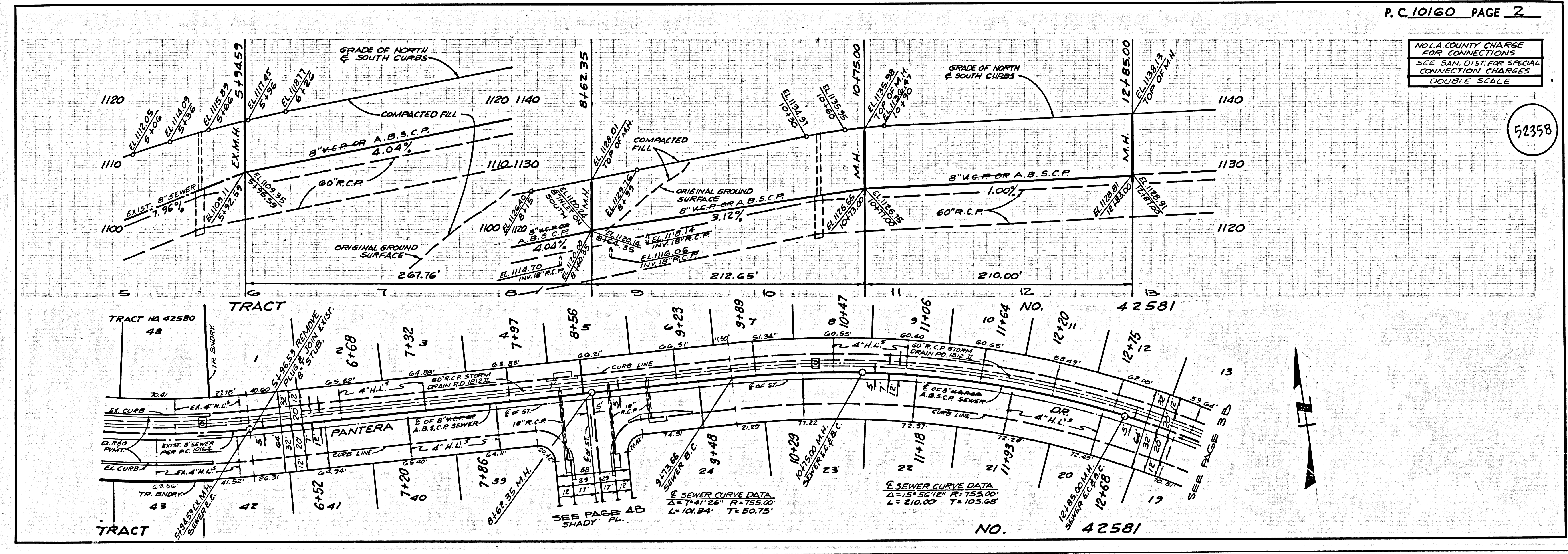
TRACT No 42581
 PRIVATE CONTRACT NO. 10160

W.S. 39-D, 2
 2 SHEETS, 4 PAGES
 SCALE: VERT. 1" = 4'
 HORIZ. 1" = 40'
 DATE: JUNE, 1985
 PREPARED IN THE OFFICES OF
 SING & HULLER, INC.
 305 S. HUNTINGTON DRIVE
 SAN MARINO, CALIF. 91766
 REG. C. E. No. 19233
 JOHN N. SARRACINO

THE FOLLOWING LATEST REVISED STANDARD PLANS ON FILE IN THE OFFICE OF THE COUNTY ENGINEER SHALL APPLY IN THE CONSTRUCTION OF THIS PROJECT:

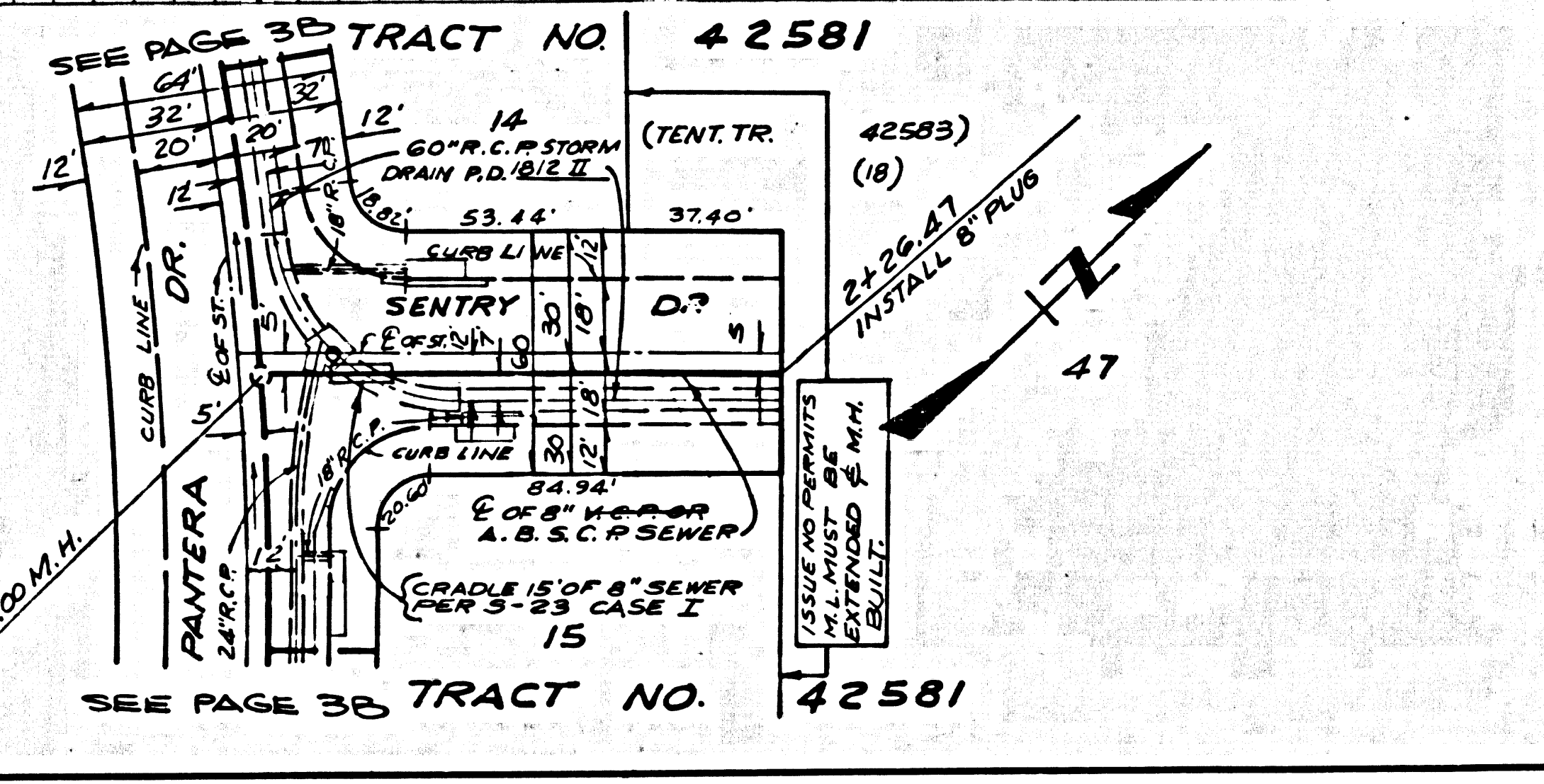
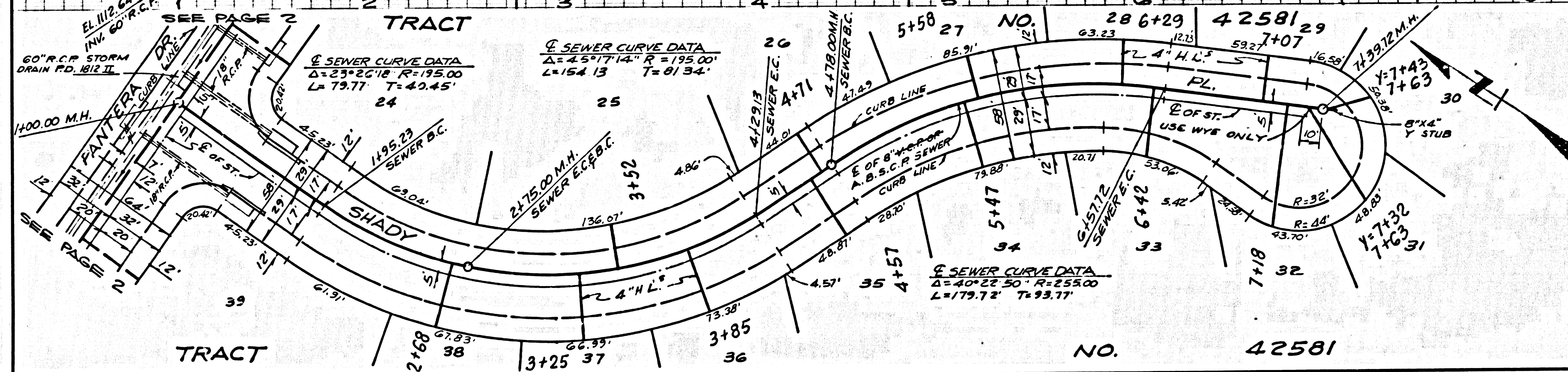
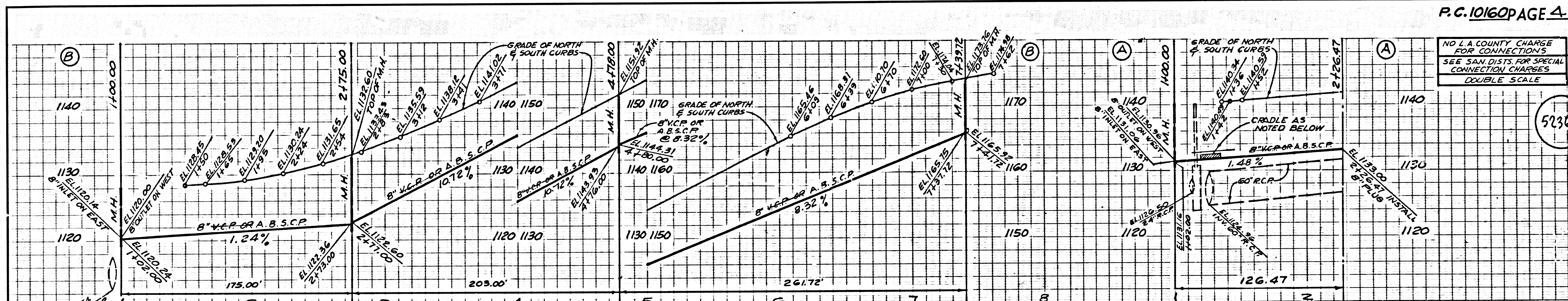
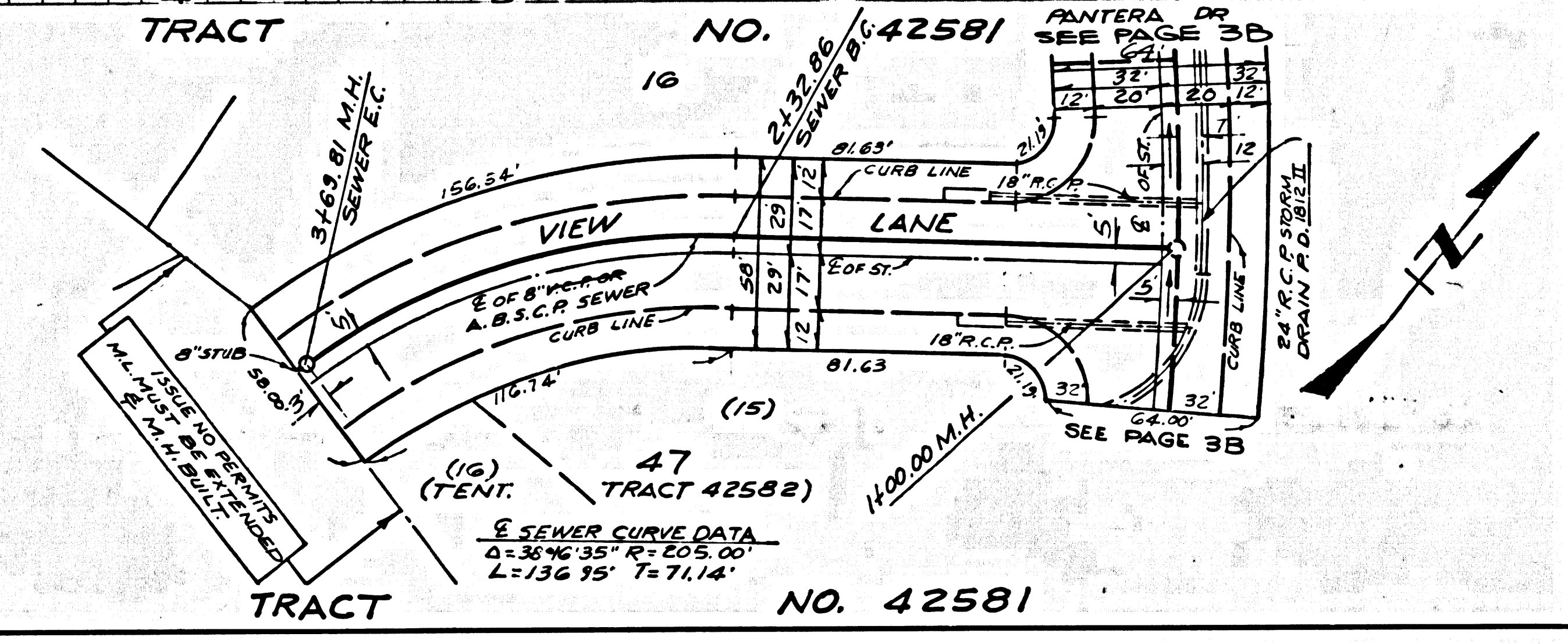
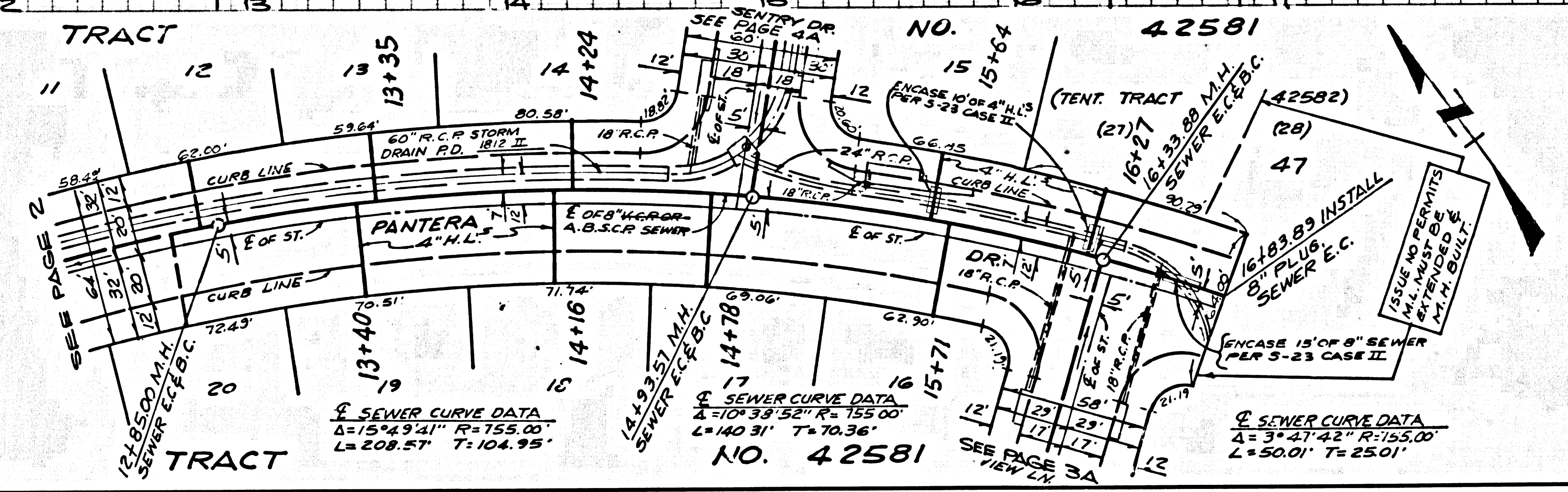
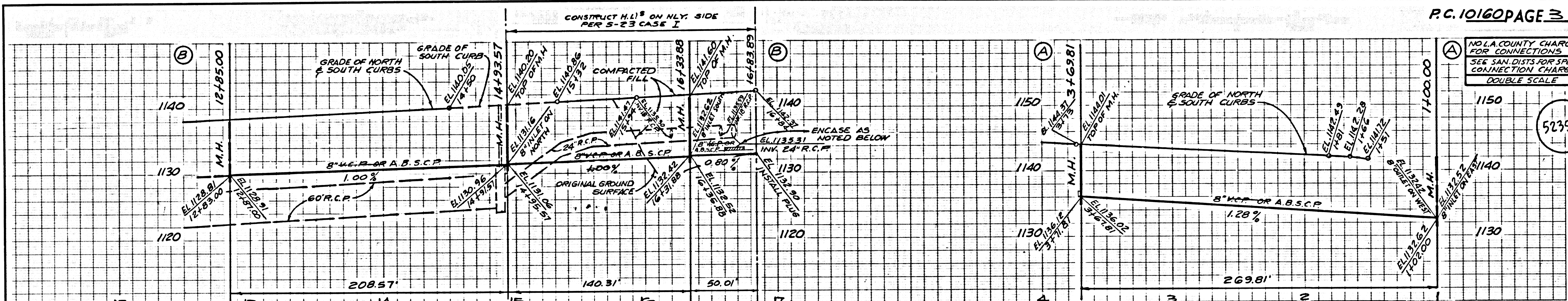
SECTION	NO.
MINIMUM PUBLIC SAFETY REQUIREMENTS	8-2
BRICK MANHOLE	8-2
STANDARD MANHOLE STEP	8-2
BEDDING FOR SEWER PIPE	8-2
CHARING AND ENCASMENT	8-2
WYE OR TEE SUPPORT	8-2
ALLOWABLE TRENCH WIDTHS	8-2
LOCKING MANHOLE FRAME AND COVER	8-2
NON-BRONZED PERCAST CONCRETE MANHOLE	8-2
RECORDING REQUIREMENTS FOR PLASTIC PIPE	8-2
SPECIAL HOUSE LATERAL	8-2

COUNTY OF LOS ANGELES, CALIFORNIA
 STEPHEN J. KOONCE, COUNTY ENGINEER
 WALTER E. GARRISON, CHIEF ENGINEER
 CO. SAN DIST. NO. 1
 APPROVED: *Sam Miller* 10/1/85
 SAN DIMAS REGIONAL ENGINEER
 APPROVED: *John N. Sarracino* 10/1/85
 COUNTY ENGINEER
 CHECKED: *John N. Sarracino* 10/1/85
 BLDG. DIST. NO. 16783
 SAN DIMAS BLDG. DIST. 70.00



P.C. 10160 PAGE 2

NOT A COUNTY CHARGE FOR CONNECTIONS
 SEE SAN. DIST. FOR SPECIAL CONNECTION CHARGES
 DOUBLE SCALE



0210139

18254

0M

TRACT