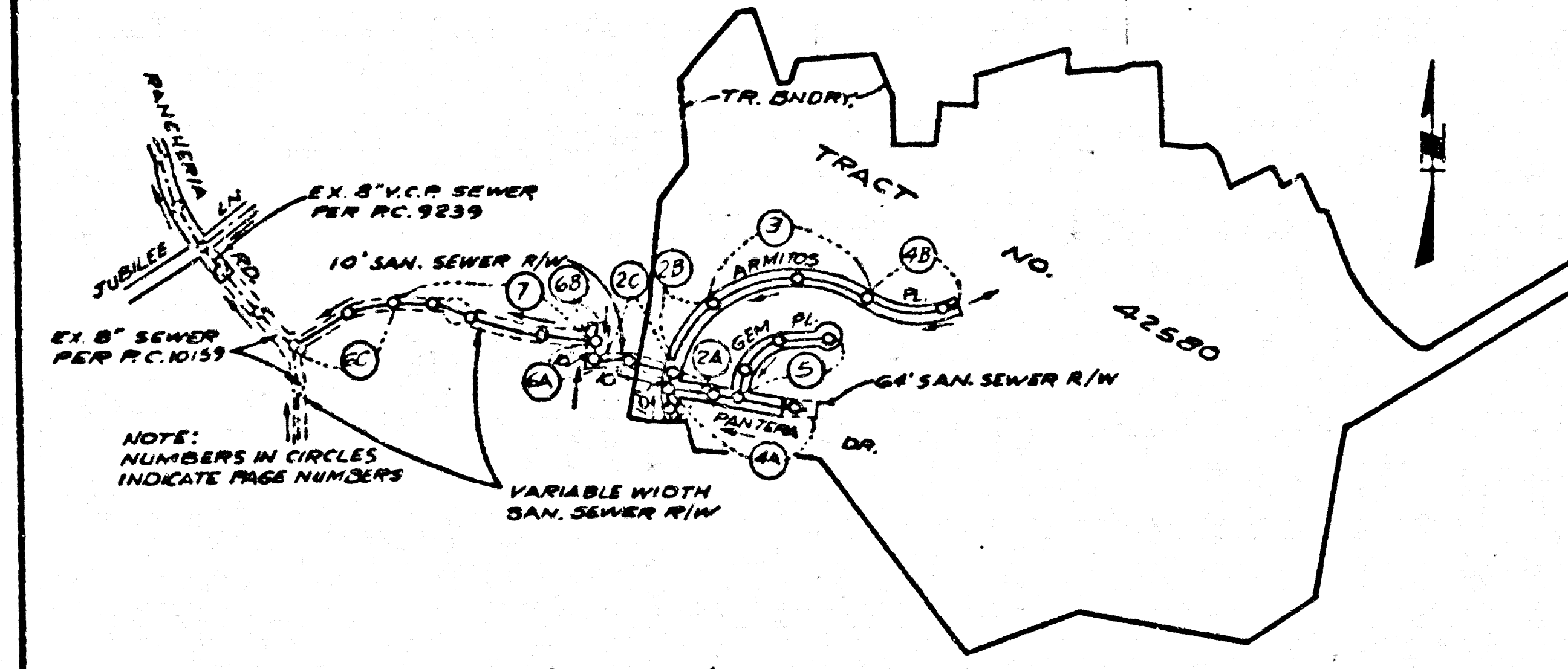


B.M. CG 3911 ELEV 895.558
 L & T IN E END CB 44 FT 5 1/2
 30 FT W C/L INT GRAND AVE
 + DIAMOND BAR BLVD (MHD B.M. 42)
 OTTERBEIN QUAD. 1975.

REVISION NO 2
 APPROVED BY:
 [Signature]
 S.A. CO. DEPT. OF PUBLIC WORKS
 DATE: 12-13-87

PAGE 1 DELETE H.L., CONST. & ELEVATION AT STA. 4150.43 TO 4150.43
 & 4152.22 AND OTHER STATION POINTS FOR REVISIONS



INDEX MAP
 TRACT NO. 42580
 P.C. 10164
 SCALE: 1"=100'

REVISION NO 2
 APPROVED BY:
 [Signature]
 S.A. CO. DEPT. OF PUBLIC WORKS
 DATE: 1-10-88

PAGE 2A REVERSE PLAN & PROFILE FROM STA. 4150.43 TO 4150.43
 TO SHOW CONST. OF ST. 1117

PAGE 4A REVERSE PLAN & PROFILE FROM STA. 1140 TO 1145.00
 TO SHOW CONST. OF ST. 1117

PRIVATE ENGINEER'S NOTICE TO CONTRACTORS

The existence and location of any underground utility lines or structures shown on these plans are obtained by search of the available records. To the best of our knowledge, there are no existing utilities except as shown on these plans. The contractor is required to take due precautionary measures to protect the utility lines shown and any other lines not of record or not shown on these plans.

[Signature]
 Registered Engineer R.C.E. 19293

NO CONNECTION FOR THE DISPOSAL OF INDUSTRIAL WASTES SHALL BE MADE TO SEWERS SHOWN ON THESE DRAWINGS UNTIL A PERMIT FOR INDUSTRIAL WASTEWATER DISCHARGE HAS BEEN ISSUED BY THE SANITATION DISTRICTS FOR SAID CONNECTION.

BEFORE BREAKING INTO OR CONSTRUCTION ON A COUNTY SANITATION DISTRICT SEWER AND PRIOR TO FINAL ACCEPTANCE OF THE PROJECT, SANITATION DISTRICT INSPECTOR SHALL BE NOTIFIED BY PHONE 562-8605. INSPECTOR SO THAT REQUIRED INSPECTION CAN BE MADE.

- CONSTRUCTION NOTES CONT'D.**
16. FULL COMPLIANCE WITH PART 212 OF THE SPECIAL PROVISIONS IS REQUIRED FOR THE INSTALLATION OF A.B.S. COMPOSITE PIPE.
 17. MANHOLE WATER STOP GASKETS & CLAMPS ARE REQUIRED FOR THE CONNECTION OF A.B.S. COMPOSITE PIPE TO MANHOLE STRUCTURES.
 18. A.B.S. SOLID WALL PIPE MUST BE USED FOR WYE & HOUSE LATERAL CONNECTIONS TO A.B.S. COMPOSITE MANHOLE SEWER PIPE.
 19. A.B.S. COMPOSITE PIPE SHALL BE BRODDED IN CONFORMANCE WITH THE TABLE IN SECTION B-3.1 OF PART 212 OF THE SPECIAL PROVISIONS.
 20. THREE DEGREE DEFLECTION COUPLERS ARE REQUIRED FOR RADIUS OF CURVATURE LESS THAN 300 FEET WHEN USING 8" HIGH A.B.S.C.P.
 21. NO CONNECTIONS FOR DISPOSAL OF INDUSTRIAL WASTE IS ALLOWED IF A.B.S. COMPOSITE PIPE IS USED.
 22. SEWER LINE CURVATURE SHALL NOT BE ACHIEVED BY PULLING OF JOINTS OF BENDING PIPE ENDS WHEN USING PLASTIC PIPE INCLUDING A.B.S. COMPOSITE PIPE.

NOTE
 ISSUE NO HOUSE CONNECTION PERMITS
 UNTIL P.C. 10159 IS ACCEPTED

GENERAL NOTES:

1. ELEVATIONS ARE IN FEET ABOVE U.S.C. & G.S. SEA LEVEL DATUM OF 1929.
2. NO REVISIONS SHALL BE MADE IN THESE PLANS WITHOUT THE APPROVAL OF THE COUNTY ENGINEER.
3. NO REPRESENTATIVE OF THE COUNTY ENGINEER WILL SURVEY OR LAY OUT ANY PORTION OF THE WORK.
4. GRADES TO WHICH THE IMPROVEMENT IS TO BE CONSTRUCTED ARE SHOWN ON PLANS AND PROFILES. GRADE POINTS FOR TOP OF CURBS, CENTER LINE OF STREETS, OR CENTER LINE OF ALLEYS ARE SHOWN ON PROFILES. AT ALL POINTS BETWEEN DESIGNATED POINTS THE GRADE SHALL BE ESTABLISHED SO AS TO CONFORM TO A STRAIGHT LINE DRAWN BETWEEN SAID DESIGNATED POINTS.
5. THE PRIVATE ENGINEER SHALL FURNISH THE COUNTY ENGINEER WITH STATIONING FOR ALL HOUSE LATERALS AND "T" OR "Y" BRANCHES AND SHALL PROVIDE STAKES FOR THESE AT THE PROPOSED LOCATIONS WITH STATIONING PLANTY MARKED. ALL HOUSE LATERALS SHALL BE CONSTRUCTED IN A STRAIGHT ALIGNMENT AT RIGHT ANGLES FROM THE MAIN LINE SEWER EXCEPT AS SHOWN ON THE PLANS. HOUSE LATERALS FROM CHIMNEYS SHALL NOT HAVE AN ANGLE OF LESS THAN 90° WITH THE MAIN LINE SEWER. ANY CHANGE IN ALIGNMENT SHALL BE REQUESTED IN WRITING BY THE PRIVATE ENGINEER.
6. THE PRIVATE ENGINEER SHALL FURNISH THE HOUSE LATERAL DEPTH AT THE PROPERTY LINE BELOW THE TOP OF CURB ELEVATION FOR EACH HOUSE LATERAL ON THE GRADE SHEET.
7. BEFORE WORK CAN BE STARTED, THE CONTRACTOR MUST OBTAIN A PERMIT TO EXCAVATE IN COUNTY STREETS FROM THE L.A. COUNTY ROAD DEPT., DISTRICT OFFICE NO. 1, AND PAY A FEE TO THE COUNTY ENGINEER, 880 S. VERMONT AVENUE, LOS ANGELES, CA 90005, TO COVER THE COST OF CONSTRUCTION, INSPECTION AND RECORD PLANS.
8. IF WORK IS TO BE DONE IN STATE HIGHWAY A PERMIT MUST BE OBTAINED FROM THE STATE OF CALIFORNIA, DIVISION OF HIGHWAYS, 120 SOUTH SPRING STREET, LOS ANGELES, CALIFORNIA.
9. APPROVAL OF THIS PLAN BY THE COUNTY OF LOS ANGELES DOES NOT CONSTITUTE A REPRESENTATION AS TO THE ACCURACY OF THE LOCATION OF OR THE EXISTENCE OR NON-EXISTENCE OF ANY UNDERGROUND UTILITY PIPE, OR STRUCTURE WITHIN THE LIMITS OF THIS PROJECT. THE NOTE APPLIES TO ALL PAGES.
10. REFER TO SECTION 7.1641 OF THE STANDARD SPECIFICATIONS, REGARDING SAFETY ORDERS.
11. PRIOR TO THE ISSUANCE OF THE REQUIRED SEWER CONSTRUCTION PERMIT, THE CONTRACTOR SHALL OBTAIN AND FILE WITH THE COUNTY ENGINEER COPIES OF A PERMIT TO EXCAVATE IN COUNTY STREETS FROM THE LOS ANGELES COUNTY ROAD DEPARTMENT, A PERMIT FOR EXCAVATIONS AND TRENCHES FROM THE STATE OF CALIFORNIA, DIVISION OF INDUSTRIAL SAFETY AND A CERTIFICATE OF WORKERS COMPENSATION INSURANCE WITH THE DEPARTMENT OF COUNTY ENGINEER, 880 SOUTH VERMONT, RM. 408, LOS ANGELES, CALIFORNIA 90005, NAMED AS THE CERTIFICATE HOLDER TO BE NOTIFIED TO DATE PRIOR TO COMMUNICATION OF POLICY.

CONSTRUCTION NOTES:

1. WORK SHALL BE CONSTRUCTED ACCORDING TO THE STANDARD SPECIFICATIONS FOR PUBLIC CONSTRUCTION 1982 EDITION W/1983 SUPPLEMENTS AND COUNTY ENGINEER SPECIAL PROVISIONS FOR THE CONSTRUCTION OF SANITARY SEWERS DATED 12-22-78 AND SHALL BE PROVIDED ONE (1) IN THE PRESENCE OF THE COUNTY ENGINEER.
2. THE CONTRACTOR SHALL NOTIFY THE ENVIRONMENTAL DEVELOPMENT DIVISION BY TELEPHONE, 728-2700, AT LEAST TWENTY-FOUR HOURS BEFORE STARTING ANY WORK UNDER THIS CONTRACT.
3. HOUSE LATERALS TO BE CONSTRUCTED WITHIN PROPERTY LINE 8 FEET BELOW CURB GRADE EXCEPT AS NOTED.
4. WYE OR TEE BRANCHES MAY BE USED FOR CONNECTIONS TO MAINLINE SEWERS EXCEPT AS NOTED.
5. ALL STRUCTURES SHALL BE EITHER BRICK MANHOLES PER S-3 OR PRECAST CONCRETE MANHOLES PER S-38, EXCEPT AS NOTED.
6. PROVIDE STAKES ON THE PROPERTY LINE OR PROPERTY LINES PROCEEDED AT RIGHT ANGLES TO THE SEWER LINE AT THE CENTER LINE OF EACH MANHOLE.
7. MANHOLE TOPS IN UNIMPROVED PORTS OF WAY TO BE SIX INCHES ABOVE FINISHED GRADE.
8. WITNEDED CLAY PIPE JOINTS SHALL BE TYPE "D" OR "E" PER STANDARD SPECIFICATIONS SECTION 306-2.
9. IF A POWER POLE IS WITHIN THREE FEET OF THE SEWER, THE SEWER SHALL BE ENCASED, PER S-28, CASE B, TWO FEET ON EACH SIDE FROM THE POINT OF INTERFERENCE.
10. IF DURING THE COURSE OF CONSTRUCTION IT IS DETERMINED THAT THERE IS LESS THAN FOUR FEET OF COVER OVER THE TOP OF A MAIN LINE OR HOUSE LATERAL SEWER WHICH IS NOT INDICATED ON THE PLANS, THE PIPE SHALL BE ENCASED PER S-28, CASE B UNLESS OTHERWISE APPROVED BY THE COUNTY ENGINEER.
11. ALL JOINTS BETWEEN CAST IRON PIPE AND WITNEDED CLAY PIPE SHALL BE MADE WITH A RUBBER SLEEVE JOINT, TYPE "D" OR "E", WITH BUSHING IF NECESSARY PER STANDARD SPECIFICATIONS SECTION 306-2.
12. ALL TRENCHES BETWEEN CAST IRON PIPE & S.C.P. SHALL BE MADE WITH A RUBBER JOINT WITH BUSHING AND SPECIAL PROVISIONS.
13. SEWERS TO BE CONSTRUCTED PER SECTION 306-2 OF THE STANDARD SPECIFICATIONS AND SPECIAL PROVISIONS.
14. RESURFACE ALL TRENCHES WITHIN PAVED AREAS TO MEET L.A. COUNTY ROAD DEPT. OR CALIFORNIA STATE HIGHWAY REQUIREMENTS IN ACCORDANCE WITH PERMITS.
15. FULL COMPLIANCE WITH SECTION 306-1.33 OF THE SPECIAL PROVISIONS WILL BE REQUIRED FOR BACKFILL IN STREET. CERTIFICATION OF BACKFILL COMPACTION AND SAND EQUIVALENTS BY A "CALIFORNIA" REGISTERED TESTING LABORATORY SHALL BE PROVIDED BY THE PERMITTEE PRIOR TO THE ISSUANCE OF A CERTIFICATE OF PARTIAL ACCEPTANCE.
16. SPECIAL BACKFILL IN EASEMENT CONSTRUCTION: (A) BACKFILL TRENCH AND REPLACE OTHER EARTH SO AS TO ACHIEVE THE NATURAL OR FINISHED GRADES AND SLOPES SHOWN ON THE DRAWING PLANS FOR THIS DEVELOPMENT BY THE BUILDING AND SAFETY DIVISION. (B) ALL BACKFILL AND EARTH TO BE PLACED SHALL BE COMPACTED TO A MINIMUM OF 90% OF MAXIMUM DENSITY PER A.S.T.M. STD. METHOD OF TEST D1557 AS MODIFIED. ACCEPTABLE CERTIFICATION OF SUCH COMPACTION SHALL BE SUBMITTED TO THE ENVIRONMENTAL DEVELOPMENT DIVISION.

SANITARY SEWERS

TO BE CONSTRUCTED IN

TRACT NO. 42580
 PRIVATE CONTRACT NO. 10164

W.S. 39-02
 4 SHEETS, 7 PAGES
 SCALE: HORIZ. 1"=50' VERT. 1"=10'
 JUNE, 1983
 PREPARED IN THE OFFICES OF
 LIND & HILLEBRAND INC.
 208 S. HUNTINGTON DRIVE
 SAN MARINO CA 91088
 BY: [Signature] REG. C.E. No. 12233

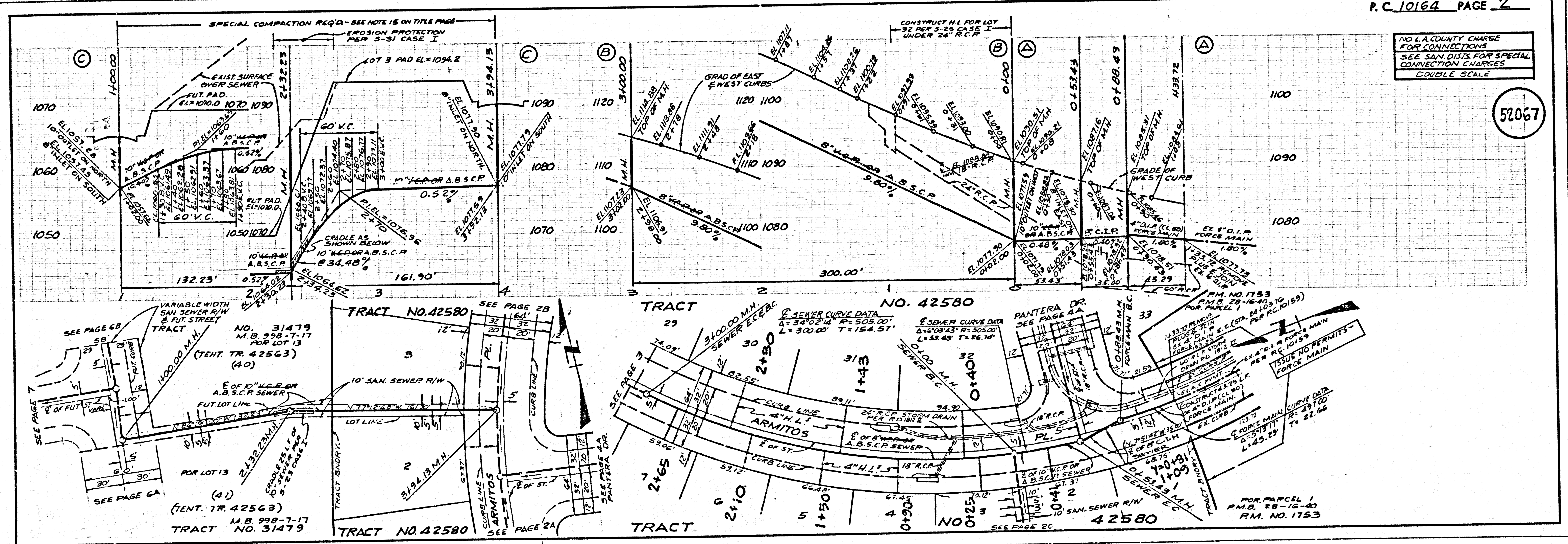
52066

THE FOLLOWING LATEST REVISED STANDARD PLANS ON FILE IN THE OFFICE OF THE COUNTY ENGINEER SHALL APPLY IN THE CONSTRUCTION OF THIS PROJECT:

MINIMUM PUBLIC SAFETY REQUIREMENTS	S-3
BRICK MANHOLE	S-38
STANDARD MANHOLE STOP	S-37
BRICKING FOR SEWER PIPE	S-37
CHAMBER AND ENCASMENT	S-38
WYE OR TEE SUPPORT	S-38
ALLOWABLE TRENCH WIDTHS	S-38
BRICKING MANHOLE PLANS AND COVER	S-38
NON-ARMORED PRECAST CONCRETE MANHOLES	S-38
BEDDING REQUIREMENTS FOR PLASTIC PIPE	S-37-A
SPECIAL HOUSE LATERALS	S-37-A
EROSION PROTECTION IN SPEED SLOPES	S-37

COUNTY OF LOS ANGELES, CALIFORNIA

STEPHEN J. KOONCE, COUNTY ENGINEER
 WALTER E. GARRISON, CHIEF ENGINEER
 CO. SAN. DIST. NO. 21
 APPROVED: [Signature] APPROVED: [Signature]
 SAN. DIST. REGIONAL ENGINEER (SAB) COUNTY ENGINEER
 CHECKED: [Signature] DATE: [Signature]
 M.S. C.E. NO. 11892
 SAN DIMAS BLDG. DIST. 1000

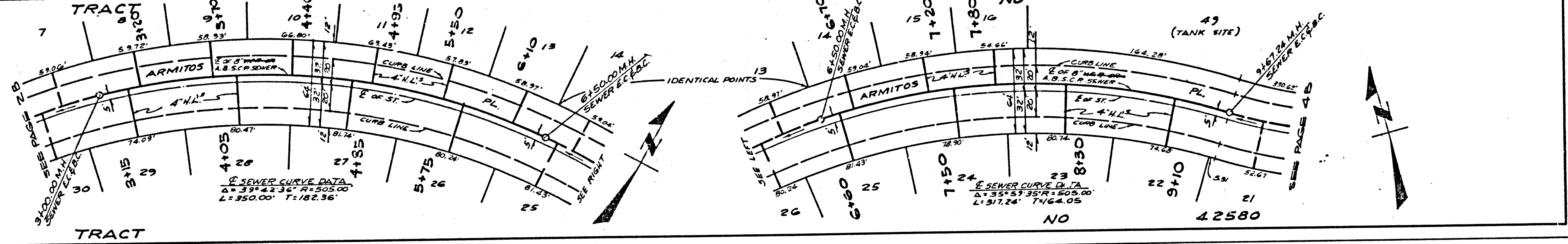
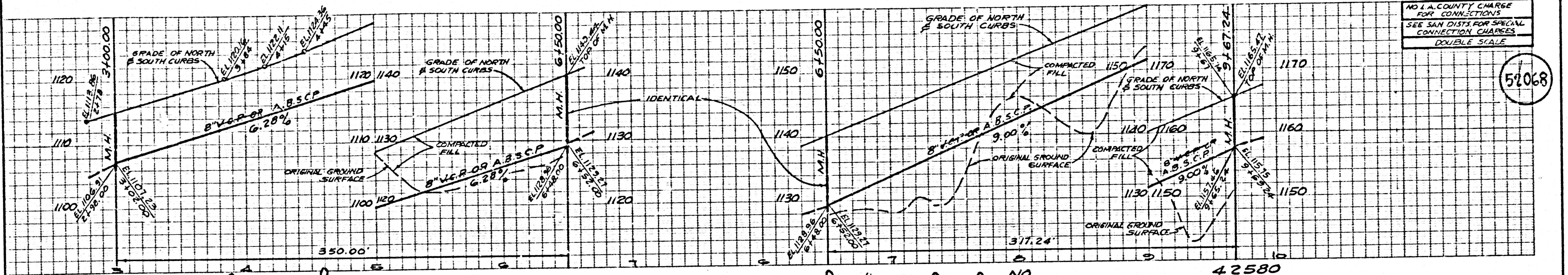


NO L.A. COUNTY CHARGE FOR CONNECTIONS
 SEE SAN. DIST. FOR SPECIAL CONNECTION CHARGES
 DOUBLE SCALE

52067

NO L.A. COUNTY CHARGE FOR CONNECTIONS
SEE SAN DIST. FOR SPECIAL CONNECTION CHARGES
DOUBLE SCALE

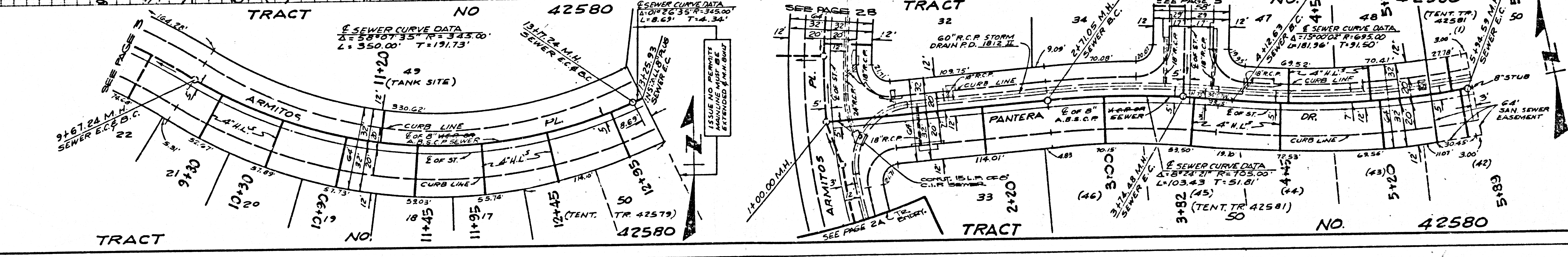
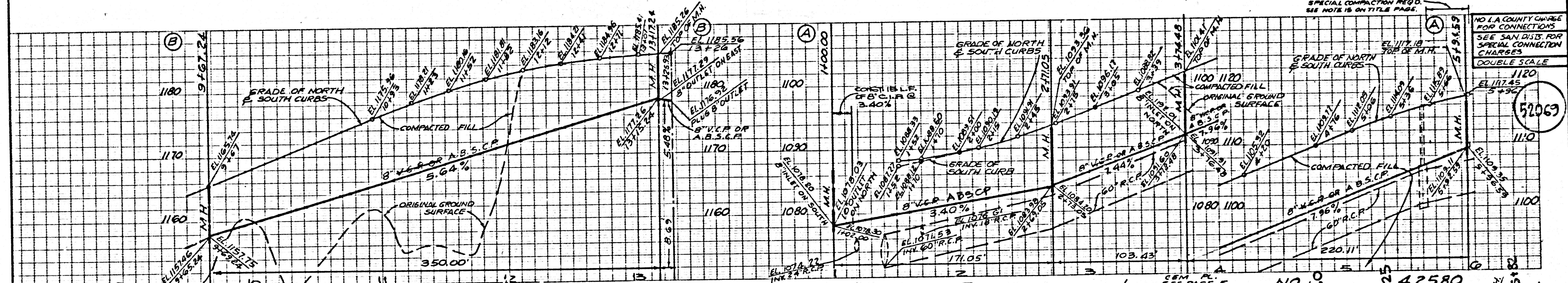
52068



TRACT

SPECIAL CONNECTION REQ'D SEE NOTE 15 ON TITLE PAGE.
NO L.A. COUNTY CHARGE FOR CONNECTIONS
SEE SAN DIST. FOR SPECIAL CONNECTION CHARGES
DOUBLE SCALE

52069



TRACT

TRACT

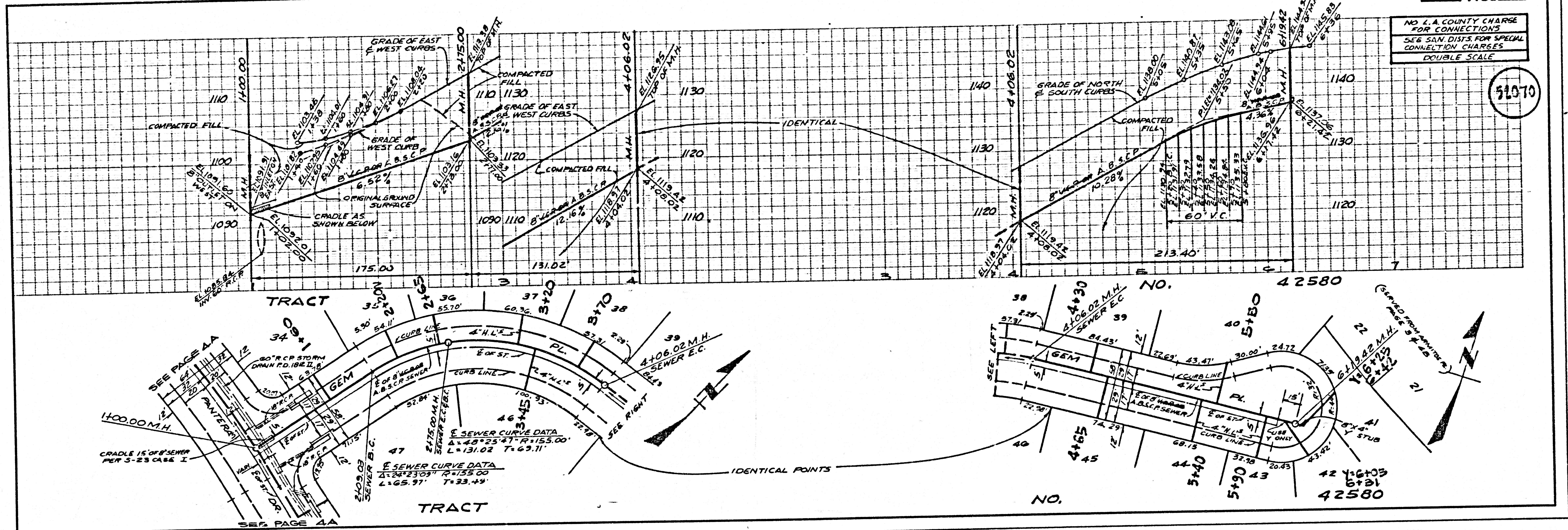
TRACT

VC.10164

VC. 42580

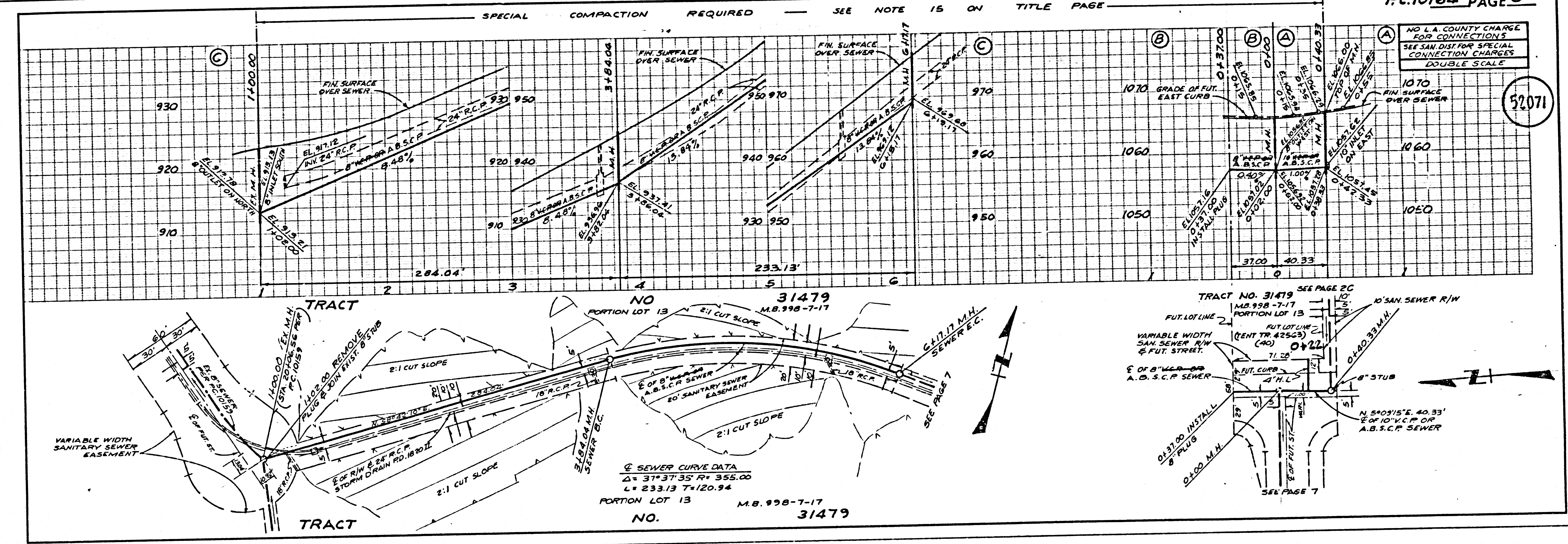
NO L.A. COUNTY CHARGE FOR CONNECTIONS
SEE SAN. DIST. FOR SPECIAL CONNECTION CHARGES
DOUBLE SCALE

52070

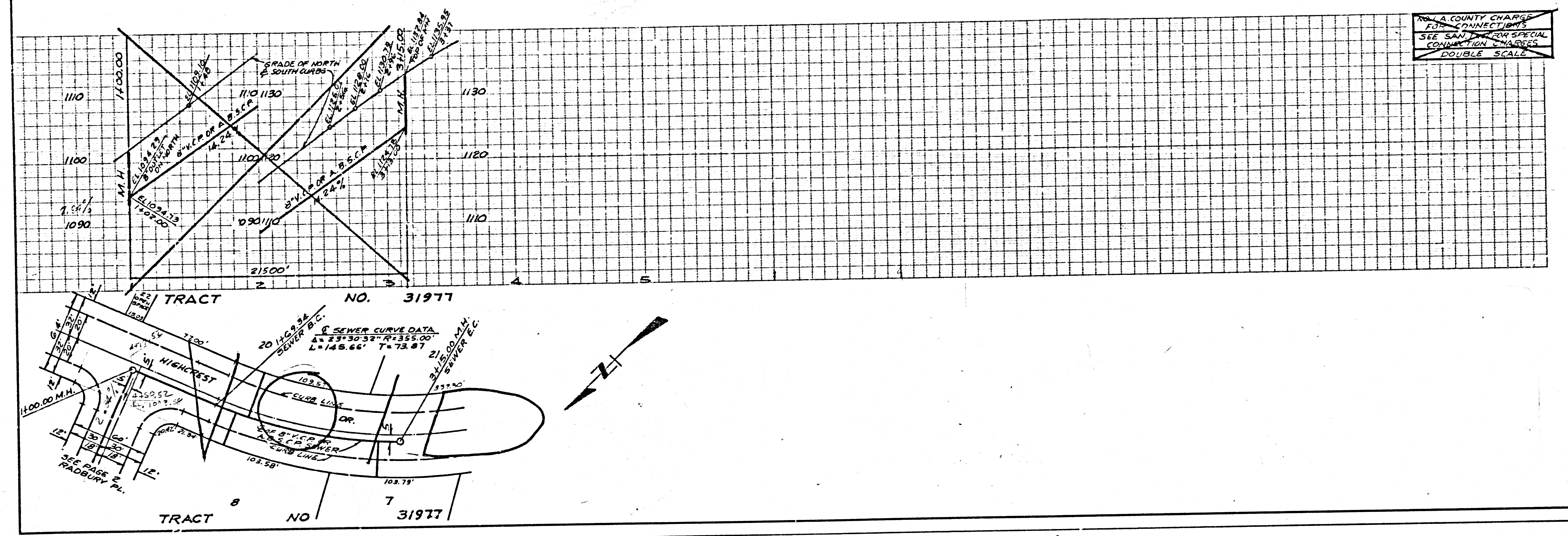


NO L.A. COUNTY CHARGE FOR CONNECTIONS
SEE SAN. DIST. FOR SPECIAL CONNECTION CHARGES
DOUBLE SCALE

52071



NO. L.A. COUNTY CHARGE FOR CONNECTIONS
SEE SAN. DIST. FOR SPECIAL CONNECTION CHARGES
DOUBLE SCALE



SPECIAL COMPACTION REQUIRED SEE NOTE 15 ON TITLE PAGE

NO. L.A. COUNTY CHARGE FOR CONNECTIONS
SEE SAN. DIST. FOR SPECIAL CONNECTION CHARGES
DOUBLE SCALE

52072

