

**SANITARY SEWERS**  
TO BE CONSTRUCTED IN  
**TRACT NO. 33339**

**PRIVATE CONTRACT NO. 10167**

A-63  
5 SHEETS, 10 PAGES  
SCALE: HORIZ. 1" = 40' VERT. 1" = 4'  
JULY 5th, 1983  
PREPARED IN THE OFFICES OF  
**SIKAND ENGINEERING ASSOCIATES**  
15230 BURBANK BLVD., VAN NUYS  
CALIFORNIA 91411 (213) 787-8550  
BY: *[Signature]*  
REG. C. E. No. 81893

50366

- GENERAL NOTES:**
- ELEVATIONS ARE IN FEET ABOVE U.S.C. & G.S. SEA LEVEL DATUM OF 1988.
  - NO REVISIONS SHALL BE MADE IN THESE PLANS WITHOUT THE APPROVAL OF THE COUNTY ENGINEER.
  - NO REPRESENTATIVE OF THE COUNTY ENGINEER WILL SURVEY OR LAY OUT ANY PORTION OF THE WORK.
  - GRADES TO WHICH THIS IMPROVEMENT IS TO BE CONSTRUCTED ARE SHOWN ON PLANS AND PROFILES. GRADE POINTS FOR TOP OF CURBS, CENTER LINE OF STREETS, OR CENTER LINE OF ALLEYS ARE SHOWN BY CIRCLES ON PROFILES AT ALL POINTS BETWEEN ADJACENT POINTS THE GRADE SHALL BE ESTABLISHED SO AS TO CONFORM TO A STRAIGHT LINE DRAWN BETWEEN SAID DESIGNATED POINTS.
  - THE PRIVATE ENGINEER SHALL FURNISH THE COUNTY ENGINEER WITH GRADE SHEETS AND STATIONING FOR ALL HOUSE LATERALS AND "T" OR "Y" BRANCHES AND SHALL PROVIDE STAKES FOR THEM AT THEIR PROPER LOCATIONS WITH STATIONING PLAINLY MARKED. ALL HOUSE LATERALS SHALL BE CONSTRUCTED IN A STRAIGHT ALIGNMENT AT RIGHT ANGLES FROM THE MAIN LINE SEWER EXCEPT AS SHOWN ON THE PLANS. HOUSE LATERALS FROM CHIMNEYS SHALL NOT HAVE AN ANGLE OF LESS THAN 45° WITH THE MAIN LINE SEWER. ANY CHANGE IN ALIGNMENT SHALL BE REQUESTED IN WRITING BY THE PRIVATE ENGINEER.
  - THE PRIVATE ENGINEER SHALL FURNISH THE HOUSE LATERAL DEPTH AT THE PROPERTY LINE BELOW THE TOP OF CURB ELEVATION FOR EACH HOUSE LATERAL ON THE GRADE SHEET.
  - BEFORE WORK CAN BE STARTED, THE CONTRACTOR MUST OBTAIN A PERMIT TO EXCAVATE IN COUNTY STREETS FROM THE L.A. COUNTY ROAD DEPT., DISTRICT OFFICE NO. 10-10-10, AND PAY A FEE TO THE COUNTY ENGINEER, 800 S. VENICE AVENUE, LOS ANGELES, CA 90008, TO COVER THE COST OF CONSTRUCTION INSPECTION AND RECORD PLANS.
  - IF WORK IS TO BE DONE IN A STATE HIGHWAY, A PERMIT MUST BE OBTAINED FROM THE STATE OF CALIFORNIA, DIVISION OF HIGHWAYS, 120 SOUTH SPRING STREET, LOS ANGELES, CALIFORNIA.
  - APPROVAL OF THIS PLAN BY THE COUNTY OF LOS ANGELES DOES NOT CONSTITUTE A REPRESENTATION AS TO THE ACCURACY OF THE LOCATION OF OR THE EXISTENCE OR NON-EXISTENCE OF ANY UNDERGROUND UTILITY PIPE, OR STRUCTURE WITHIN THE LIMITS OF THIS PROJECT. THIS NOTE APPLIES TO ALL PAGES.
  - REFER TO SECTION 7.06.1 OF THE STANDARD SPECIFICATIONS, REGARDING SAFETY ORDERS.
  - PRIOR TO THE ISSUANCE OF THE REQUIRED SEWER CONSTRUCTION PERMIT, THE CONTRACTOR SHALL OBTAIN AND FILE WITH THE COUNTY ENGINEER COPIES OF A PERMIT TO EXCAVATE COUNTY STREETS FROM THE LOS ANGELES COUNTY ROAD DEPARTMENT, A PERMIT FOR EXCAVATIONS AND TRENCHES FROM THE STATE OF CALIFORNIA, DIVISION OF INDUSTRIAL SAFETY AND A CERTIFICATE OF WORKERS COMPENSATION INSURANCE WITH THE DEPARTMENT OF COUNTY ENGINEER, 800 SOUTH VENICE, P.O. BOX 100, LOS ANGELES, CALIFORNIA 90008, NAMED AS THE CERTIFICATE HOLDER TO BE NOTIFIED 30 DAYS PRIOR TO CANCELLATION OF POLICY.

- CONSTRUCTION NOTES:**
- WORK SHALL BE CONSTRUCTED ACCORDING TO THE STANDARD SPECIFICATIONS FOR PUBLIC WORKS CONSTRUCTION (1982 EDITION WITH 1983 SUPPLEMENT) AND COUNTY ENGINEER SPECIAL PROVISIONS FOR THE CONSTRUCTION OF SANITARY SEWERS DATED 12/28/78. ALL WORK SHALL BE PROSECUTED ONLY IN THE PRESENCE OF THE COUNTY ENGINEER.
  - THE CONTRACTOR SHALL NOTIFY THE ENVIRONMENTAL DEVELOPMENT DIVISION BY TELEPHONE, 730-2181, AT LEAST TWENTY-FOUR HOURS BEFORE STARTING ANY WORK UNDER THIS CONTRACT.
  - HOUSE LATERALS TO BE CONSTRUCTED WITH INVERTS AT PROPERTY LINE 8 FEET BELOW CURB GRADE EXCEPT AS NOTED.
  - WYE OR TEE BRANCHES MAY BE USED FOR CONNECTIONS TO MAINLINE SEWERS EXCEPT AS NOTED.
  - ALL STRUCTURES SHALL BE EITHER BRICK MANHOLES PER 8-02 OR PRECAST CONCRETE MANHOLES PER 8-02, EXCEPT AS NOTED.
  - PROVIDE STAKES ON THE PROPERTY LINE OR PROPERTY LINES PRODUCED AT RIGHT ANGLES TO THE SEWER LINE AT THE CENTER LINE OF EACH MANHOLE.
  - MANHOLE TOPS IN IMPROVED RIGHTS OF WAY TO BE LEVEL WITH FINISHED GRADE.
  - WITHIN CLAY PIPE JOINTS SHALL BE TYPE "B" OR "C" PER STANDARD SPECIFICATIONS SECTION 308-2.
  - IF A POWER POLE IS WITHIN THREE FEET OF THE SEWER, THE SEWER SHALL BE ENCASED, PER 8-02, CASE 2, TWO FEET ON EACH SIDE FROM THE POINT OF INTERFERENCE.
  - IF DURING THE COURSE OF CONSTRUCTION IT IS DETERMINED THAT THERE IS LESS THAN FOUR FEET OF COVER OVER THE TOP OF A MAIN LINE OR HOUSE LATERAL SEWER WHICH IS NOT INDICATED ON THE PLANS, THE PIPE SHALL BE ENCASED PER 8-02, CASE 2 UNLESS OTHERWISE APPROVED BY THE COUNTY ENGINEER.
  - ALL JOINTS: IN THREE CAST IRON PIPE AND WITHIN CLAY PIPE SHALL BE MADE WITH A RUBBER SLEEVE JOINT, TYPE "C" OR "D", WITH GASKET AND IF NECESSARY PER STANDARD SPECIFICATIONS, SECTION 308-2.
  - SEWERS TO BE TESTED FOR LEAKAGE PER SECTION 308-1.4 OF THE STANDARD SPECIFICATIONS AND SPECIAL PROVISIONS.
  - RESURFACE ALL TRENCHES WITHIN PAVED AREAS TO MEET L.A. COUNTY ROAD DEPT. OR CALIFORNIA STATE HIGHWAY REQUIREMENTS IN ACCORDANCE WITH PERMITS.
  - ALL COMPLIANCE WITH SECTION 308-1.2.2 OF THE SPECIAL PROVISIONS WILL BE REQUIRED FOR BACKFILL IN STREETS. CERTIFICATION OF BACKFILL COMPACTION AND SAND EQUIVALENTS BY A QUALIFIED, REGISTERED TESTING LABORATORY SHALL BE PROVIDED BY THE PERMITTEE PRIOR TO THE ISSUANCE OF A CERTIFICATE OF PARTIAL ACCEPTANCE.
  - SPECIAL BACKFILL IN EASEMENT CONSTRUCTION: (A) BACKFILL TRENCH AND REPLACE OTHER EARTH SO AS TO ACHIEVE THE NATURAL OR FINISHED GRADES AND SLOPES SHOWN ON THE DRAWING PLAN APPROVED FOR THIS DEVELOPMENT BY THE BUILDING AND SAFETY DIVISION; (B) ALL BACKFILL AND EARTH REPLACED SHALL BE COMPACTED TO A MINIMUM OF 90% OF MAXIMUM DENSITY PER A.S.T.M. STD. METHOD OF TEST D998 BY BROOMFIELD. ACCEPTABLE CERTIFICATION OF SUCH COMPACTION SHALL BE SUBMITTED TO THE ENVIRONMENTAL DEVELOPMENT DIVISION.

THE FOLLOWING LATEST REVISED STANDARD PLANS ON FILE IN THE OFFICE OF THE COUNTY ENGINEER SHALL APPLY IN THE CONSTRUCTION OF THIS PROJECT:

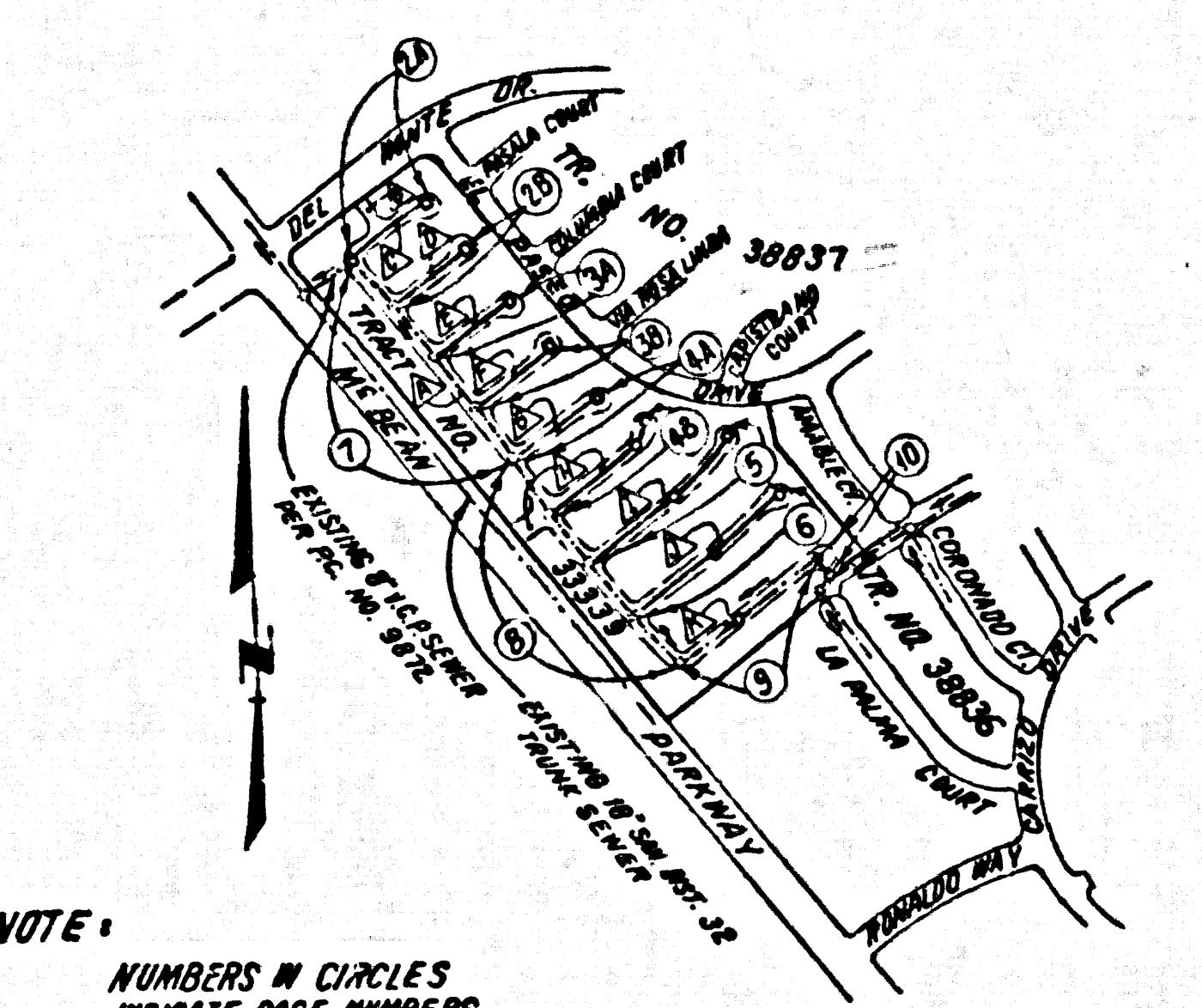
LEGEND	8-1
MINIMUM PUBLIC SAFETY REQUIREMENTS	8-2
BRICK MANHOLE	8-3
STANDARD MANHOLE ETP	8-7
BEDDING FOR SEWER PIPE	8-21
CRADLING AND INCREASEMENT	8-22
WYE OR TEE SUPPORT	8-23
ALLOWABLE TRENCH WIDTHS	8-24
LOCKING MANHOLE FRAME AND COVER	8-25
NON-REINFORCED PRECAST CONCRETE MANHOLE	8-26
RECTANGULAR SHALLOW MANHOLE	8-27
RECTANGULAR MANHOLE FRAME & COVER	8-28
PRECAST CONCRETE SHALLOW MANHOLE	8-29
CHIMNEY PIPE AND BRICK	8-30
SADDLES FOR HOUSE LATERALS	8-31
SPECIAL HOUSE LATERALS	8-32

COUNTY OF LOS ANGELES, CALIFORNIA  
STEPHEN J. KOONCE, COUNTY ENGINEER      WALTER E. GARRISON, CHIEF ENGINEER  
APPROVED: *[Signature]* 10-27-83      APPROVED: *[Signature]* 10-27-83  
CHECKED: *[Signature]* 11/24/83  
REG. C. E. NO. 16853  
SANTA CLARITA VALLEY BLDG. DIST. 8-2

B.L. 4236 ELEV. 1211.232  
R.D. B.M. 745, N. C.B. AVENIDA NAVARRA  
77 E + 30 N/O INT N° BEAN FRWY.  
N.E. COR.  
NEWHALL QUAD. 19 22.

REVISION NO. 1  
REVISED LOT NUMBERS AND ADDED STREET NAMES  
PER TRACT NO. 33339 RECORD MAP.  
APPROVED: *[Signature]* DATE 11-10-83  
OFFICE OF THE COUNTY ENGINEER

- INDEX TO STREET NAMES**
- ▲ BUNGALOW COURT DRIVE
  - ▲ SOUTHAMPTON DRIVE
  - ▲ BLAKER HOUSE COURT
  - ▲ CAPE MAY COURT
  - ▲ ROCKRIDGE COURT
  - ▲ SAG HARBOR COURT
  - ▲ TELEGRAPH HILL COURT
  - ▲ GAMBLE HOUSE COURT
  - ▲ OAKLAND COURT
  - ▲ BAY HARBOR COURT
  - ▲ RANNEY HOUSE COURT



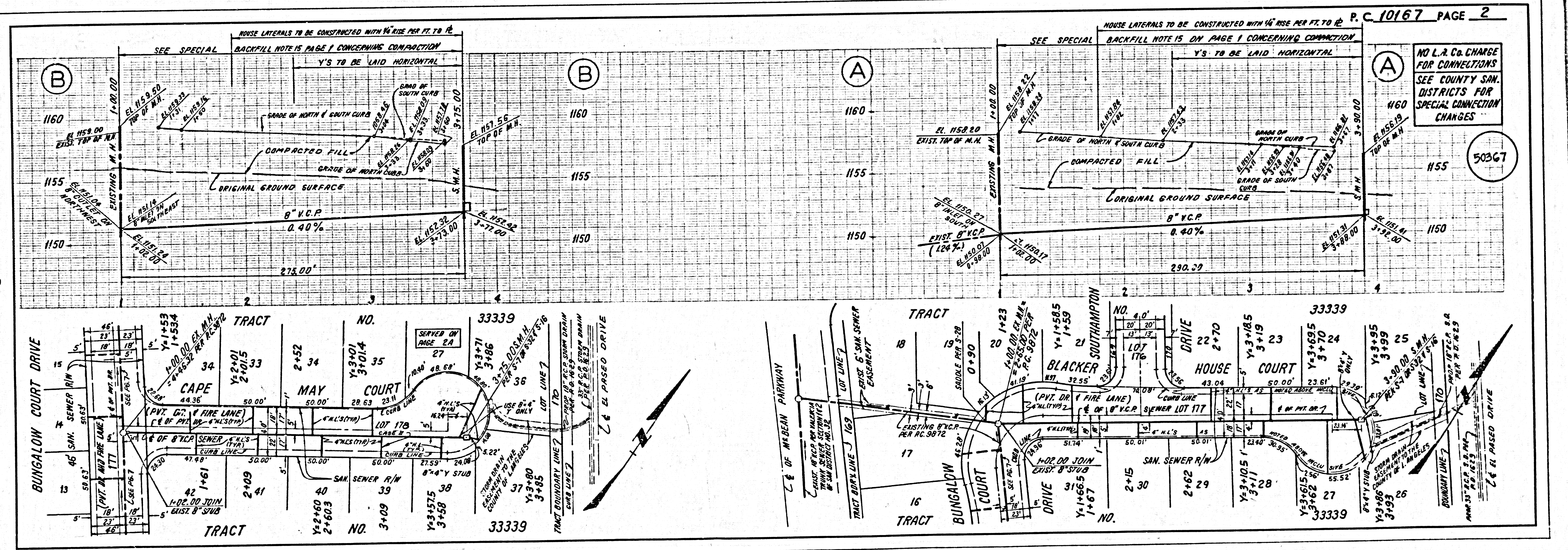
NOTE:  
NUMBERS IN CIRCLES  
INDICATE ARREAR NUMBERS

**INDEX MAP**  
SCALE 1"=600'  
TRACT NO. 33339  
P.C. NO. 10167

LOTS 167 THRU 183 ARE NOT SERVED WITH HOUSE LATERAL CONNECTIONS

NO CONNECTIONS FOR THE DISPOSAL OF INDUSTRIAL WASTES SHALL BE MADE TO SEWERS SHOWN ON THESE DRAWINGS UNLESS A PERMIT FOR INDUSTRIAL WASTEWATER DISCHARGE HAS BEEN ISSUED BY THE SANITATION DISTRICTS FOR SAID CONNECTION.

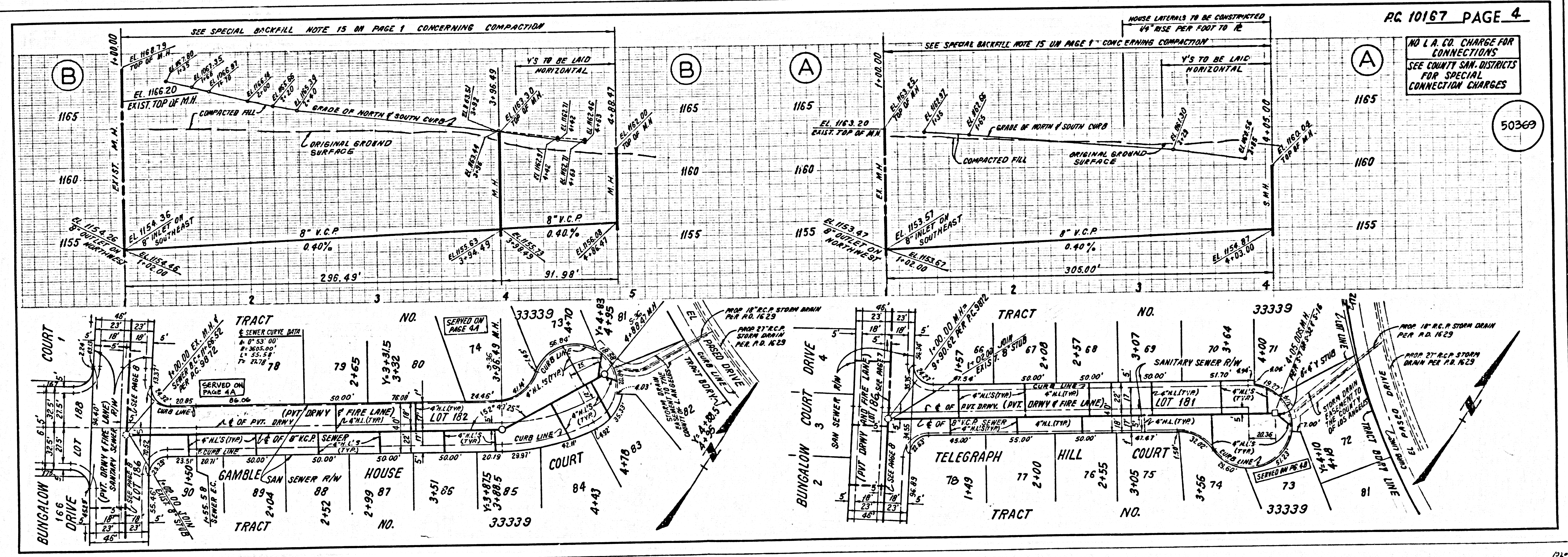
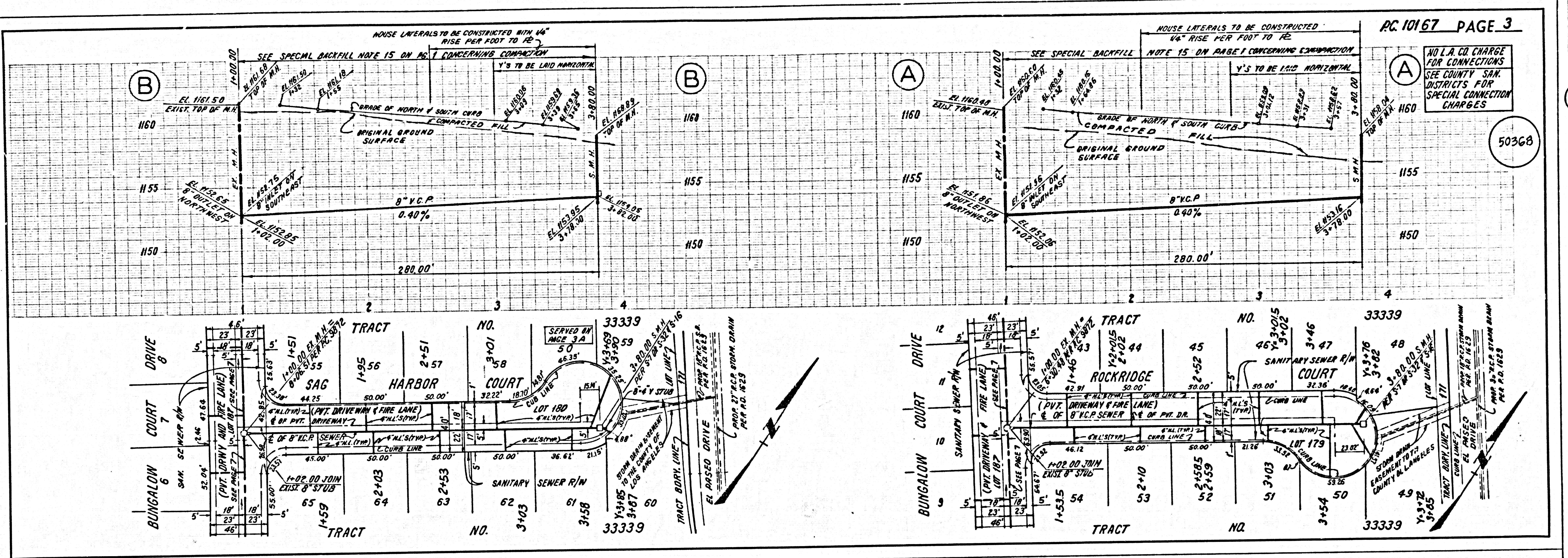
BEFORE BREAKING INTO OR CONSTRUCTION ON A COUNTY SANITATION DISTRICT SEWER AND PRIOR TO FINAL ACCEPTANCE OF THE PROJECT, SANITATION DISTRICT INSPECTOR SHALL BE NOTIFIED BY PHONE 962-8605, SO THAT REQUIRED INSPECTION CAN BE MADE.



NO L.R. CHARGE FOR CONNECTIONS  
SEE COUNTY SAN. DISTRICTS FOR SPECIAL CONNECTION CHARGES

50367

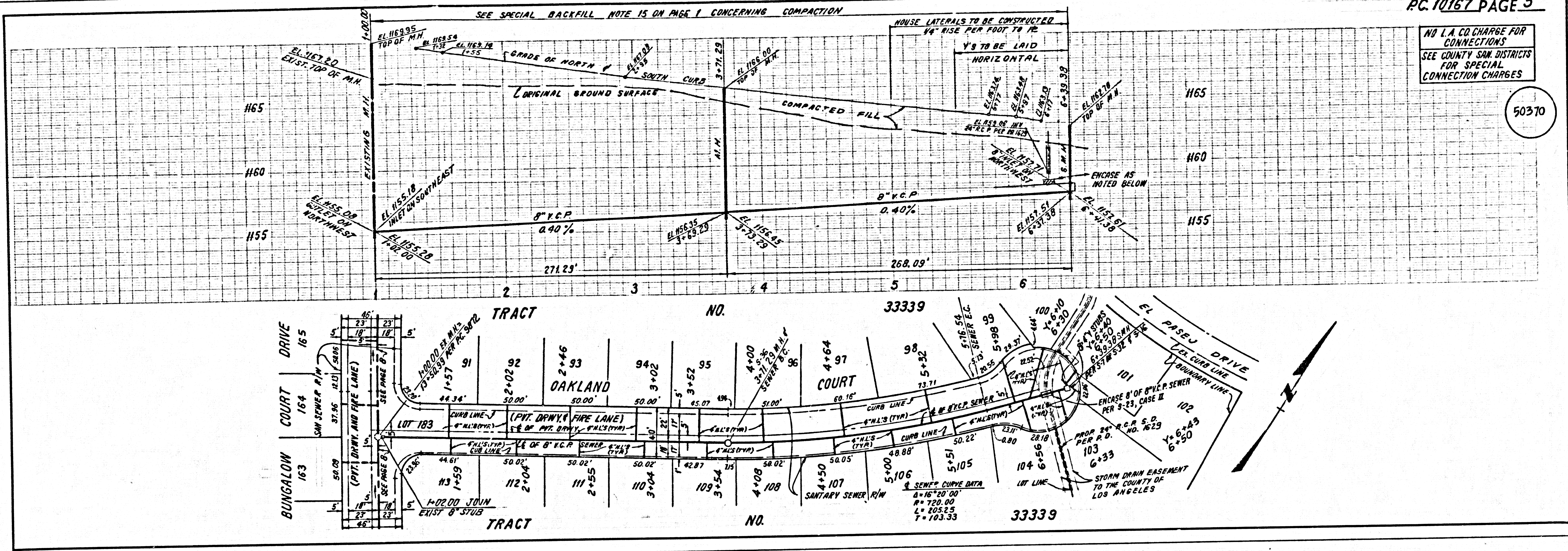






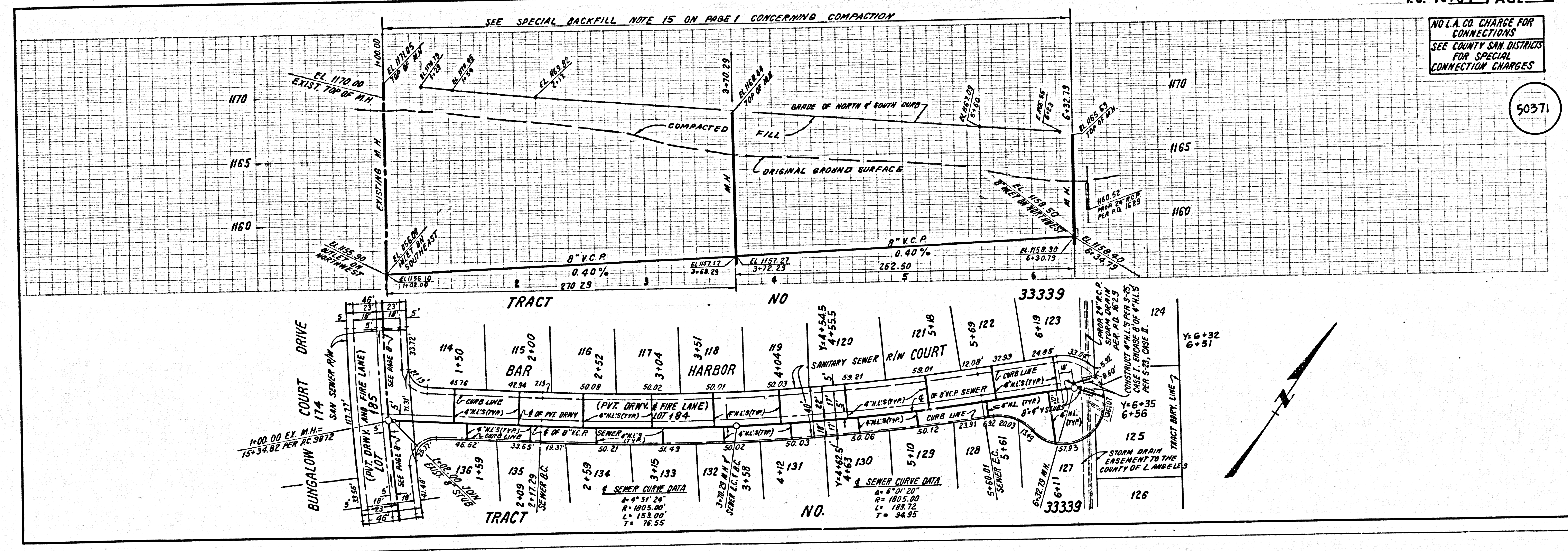
NO L.A. CO. CHARGE FOR CONNECTIONS  
SEE COUNTY SAN DISTRICTS FOR SPECIAL CONNECTION CHARGES

50370



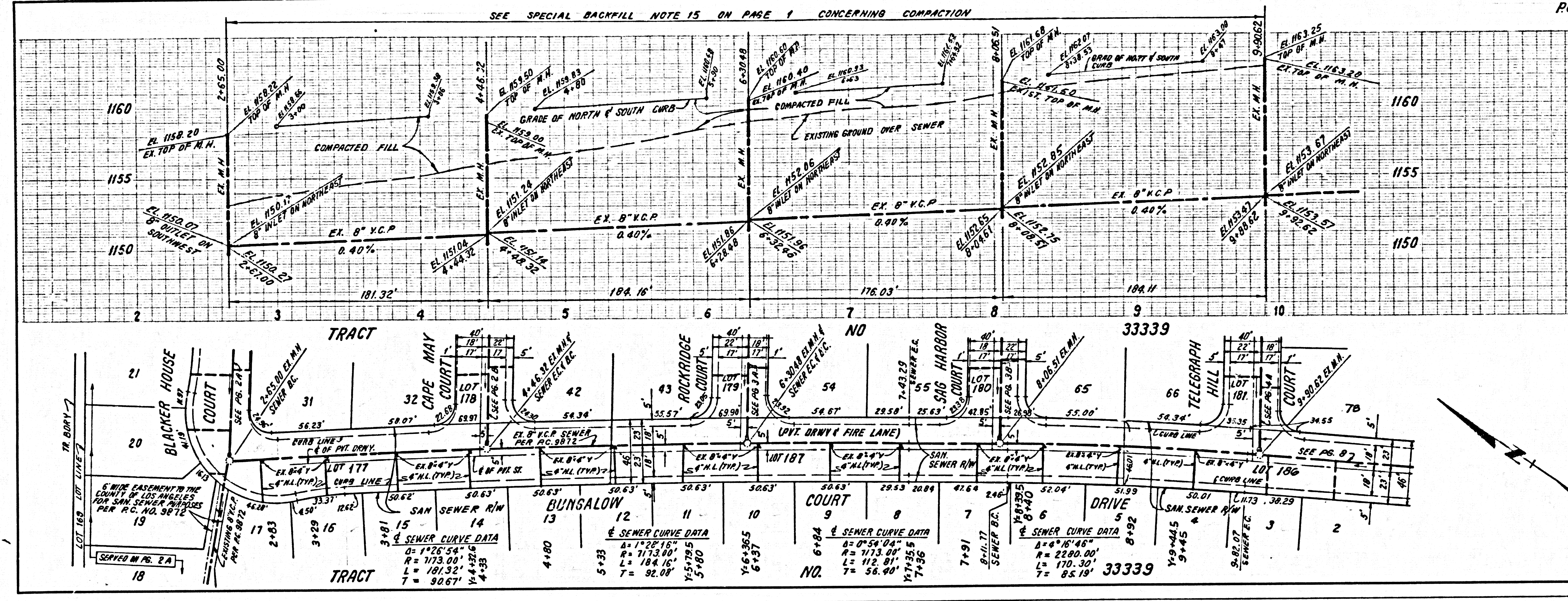
NO L.A. CO. CHARGE FOR CONNECTIONS  
SEE COUNTY SAN DISTRICTS FOR SPECIAL CONNECTION CHARGES

50371



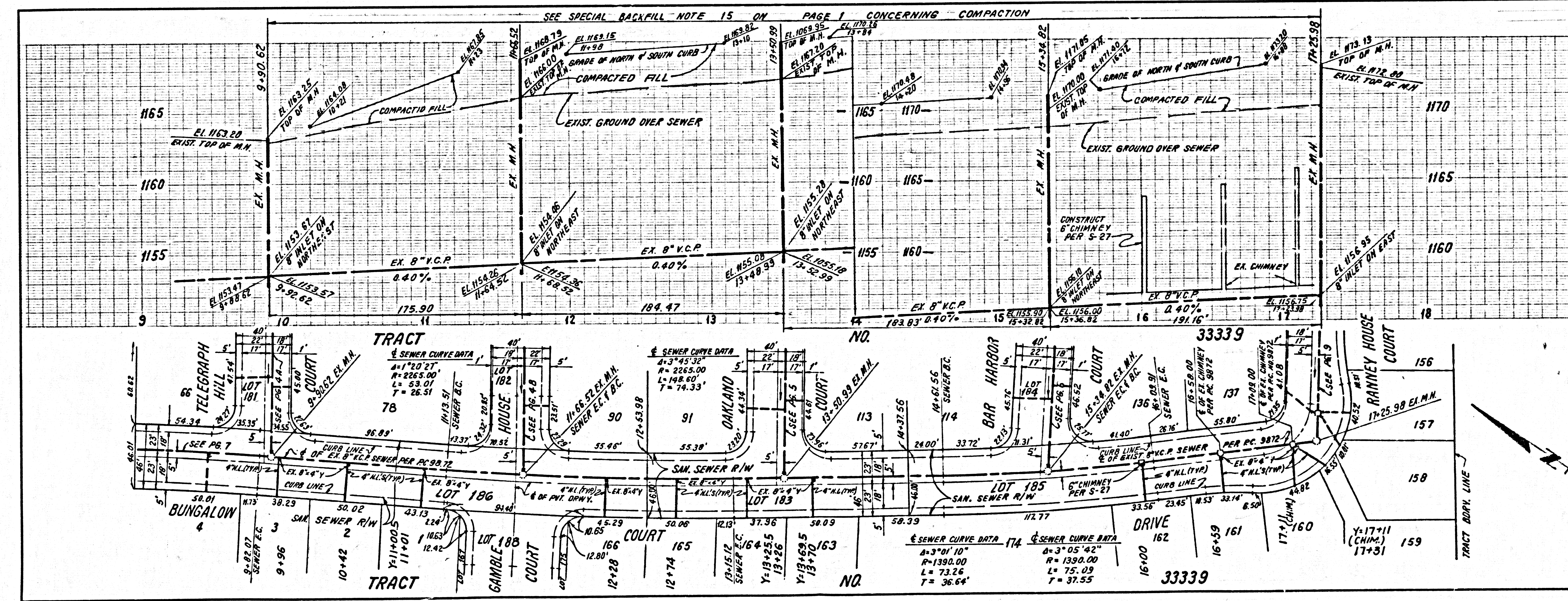
3  
PLAN 29 10167  
L.V.C.I. NO 33333 5C 10167





NO L.A. CO. CHARGE FOR CONNECTIONS  
SEE COUNTY SAN DISTRICTS FOR SPECIAL CONNECTION CHARGES

50372



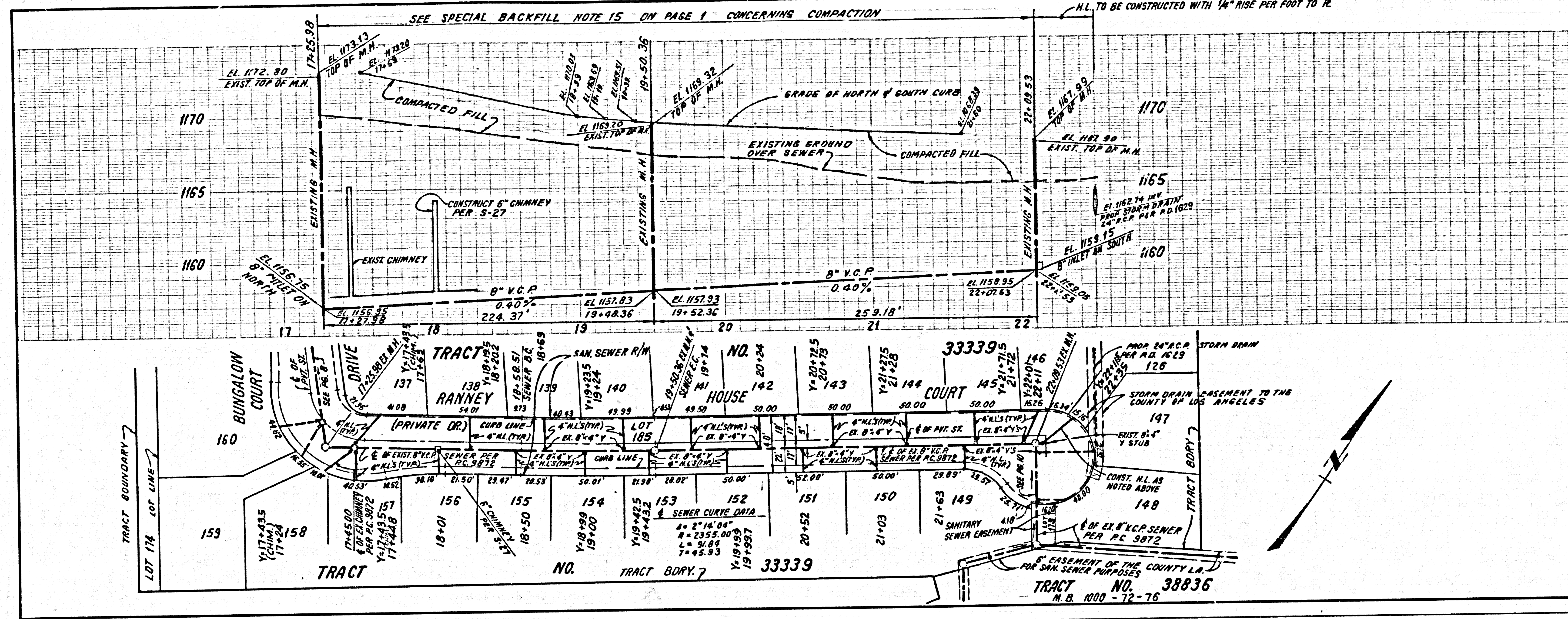
NO L.A. CO. CHARGE FOR CONNECTIONS  
SEE COUNTY SAN DISTRICTS FOR SPECIAL CONNECTION CHARGES

50373



NO L.A. CO. CHARGE FOR CONNECTIONS  
SEE COUNTY SAN. DISTRICTS FOR SPECIAL CONNECTION CHARGES

50374



NO L.A. CO. CHARGE FOR CONNECTIONS  
SEE COUNTY SAN. DISTRICTS FOR SPECIAL CONNECTION CHARGES

50375

