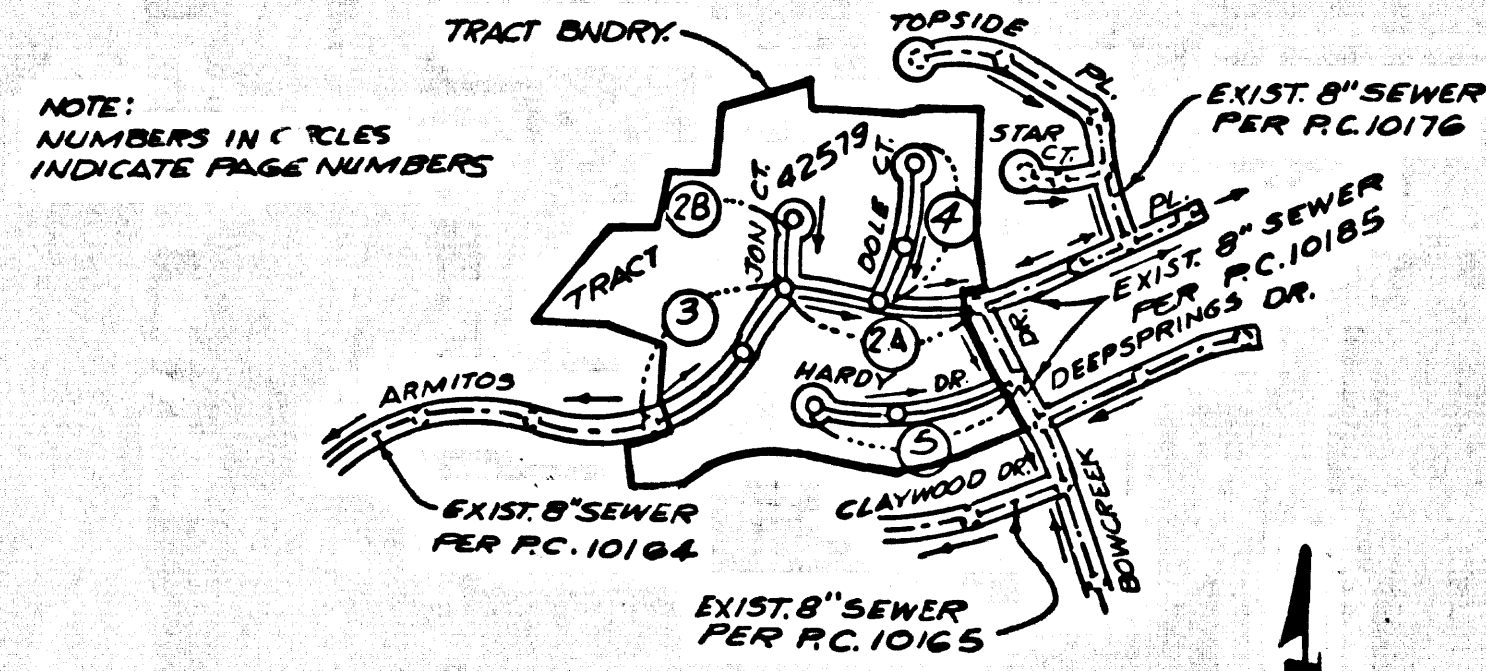


B.M. CG 3911 ELEV. 895.556
 L&T IN E END CB 44 FT 3 1/4
 96 FT W C/L INT GRAND AVE
 + DIAMOND BAR BLVD (M&D B.M. C-12)
 OTTERBEIN QUAD. 19 15



INDEX MAP
 TRACT NO. 42579
 P.C. 10168
 SCALE: 1"=600'

PRIVATE ENGINEERS NOTICE TO CONTRACTORS

The existence and location of any underground utility pipes or structures shown on these plans are obtained by search of the available records. To the best of our knowledge there are no existing utilities except as shown on these plans. The contractor is required to take due precautionary measures to protect the utility lines shown and any other lines not of record or not shown on these plans.

J.H.
 Registered Engineer R.C.E. 19233

NO CONNECTION FOR THE DISPOSAL OF INDUSTRIAL WASTES SHALL BE MADE TO SEWERS SHOWN ON THESE DRAWINGS UNTIL A PERMIT FOR INDUSTRIAL WASTEWATER DISCHARGE HAS BEEN ISSUED BY THE SANITATION DISTRICTS FOR SAID CONNECTION.

BEFORE BREAKING INTO OR CONSTRUCTION ON A COUNTY SANITATION DISTRICT SEWER AND PRIOR TO FINAL ACCEPTANCE OF THE PROJECT, SANITATION DISTRICT INSPECTOR SHALL BE NOTIFIED BY PHONE 962-8605, SO THAT REQUIRED INSPECTION CAN BE MADE.

CONSTRUCTION NOTES CONT'D

- 16. FULL COMPLIANCE WITH PART 27 OF THE SPECIAL PROVISIONS IS REQUIRED FOR THE INSTALLATION OF A.B.S.C. COMPOSITE PIPE.
- 17. MANHOLE WATER STOP GASKETS & CLAMPS ARE REQUIRED FOR THE CONNECTION OF A.B.S.C. COMPOSITE PIPE TO MANHOLE STRUCTURES.
- 18. A.B.S. SOLID WALL PIPE MUST BE USED FOR WYE & HOUSE LATERAL CONNECTIONS TO A.B.S.C. COMPOSITE MANHOLE SEWER PIPE.
- 19. A.B.S. COMPOSITE PIPE SHALL BE BEDDED IN CONFORMANCE WITH THE RULE IN SECTION 7-3.1 OF PART 27 OF THE SPECIAL PROVISIONS.
- 20. TRENCH DRAINAGE COLLECTION COMPANES ARE REQUIRED FOR RADIIUS OF CURVATURE LESS THAN 300 FEET WHICH USES A.B.S.C. PIPE.
- 21. NO CONNECTIONS FOR DISPOSAL OF INDUSTRIAL WASTE IS ALLOWED IF A.B.S. COMPOSITE PIPE IS USED.
- 22. SEWER LINE CURVATURE SHALL NOT BE ACHIEVED BY PULLING OF JOINTS OR DIVIDING PIPE ENDS WHEN USING PLASTIC PIPE INCLUDING A.B.S. COMPOSITE PIPE.

NOTE: ISSUE NO HOUSE CONNECTION PERMITS UNTIL P.C.'S 10159, 10160, 10164, 10165 & 10165 ARE ACCEPTED.

NOTE: ISSUE HOUSE CONNECTION PERMITS FOR LOTS 18, 61 & 62 FROM P.C. 10185 PAGE 5B. ISSUE HOUSE CONNECTION PERMITS FOR LOTS 32 & 33 FROM P.C. 10164 PAGE 4B.

GENERAL NOTES: DOUBLE SCALE

- 1. ELEVATIONS ARE IN FEET ABOVE U.S.C. & G.S. MEAN LEVEL DATUM OF 1985.
- 2. NO REVISIONS SHALL BE MADE IN THESE PLANS WITHOUT THE APPROVAL OF THE COUNTY ENGINEER.
- 3. NO REPRESENTATIVE OF THE COUNTY ENGINEER WILL SURVEY OR LAY OUT ANY PORTION OF THE WORK.
- 4. GRADES TO WHICH THIS IMPROVEMENT IS TO BE CONSTRUCTED ARE SHOWN ON PLANS AND PROFILE. GRADE POINTS FOR TOP OF CURBS, CENTER LINE OF STREETS, OR CENTER LINE OF ALLEYS ARE SHOWN BY CIRCLES ON PROFILES AT ALL POINTS BETWEEN DESIGNATED POINTS THE GRADE SHALL BE ESTABLISHED SO AS TO CONFORM TO A STRAIGHT LINE DRAWN BETWEEN SAID DESIGNATED POINTS.
- 5. THE PRIVATE ENGINEER SHALL FURNISH THE COUNTY ENGINEER WITH GRADE SHEETS AND STATIONING FOR ALL HOUSE LATERALS AND "Y" OR "T" BRANCHES AND SHALL PROVIDE 5 TAKES FOR 11" HAT THEIR PROPER LOCATIONS WITH STATIONING PLAINLY MARKED. ALL HOUSE LATERALS SHALL BE CONSTRUCTED IN A STRAIGHT LINE FROM THE MAINLINE SEWER EXCEPT AS SHOWN ON THE PLANS. HOUSE LATERALS FROM CHIMNEYS SHALL NOT HAVE AN ANGLE OF LESS THAN 45° WITH THE MAIN LINE SEWER. ANY CHANGE IN ALIGNMENT SHALL BE REQUESTED IN WRITING BY THE PRIVATE ENGINEER.
- 6. THE PRIVATE ENGINEER SHALL FURNISH THE HOUSE LATERAL DEPTH AT THE PROPERTY LINE BELOW THE TOP OF CURB ELEVATION FOR EACH HOUSE LATERAL ON THE GRADE SHEET.
- 7. BEFORE WORK CAN BE STARTED, THE CONTRACTOR MUST OBTAIN A PERMIT TO EXCAVATE IN COUNTY STREETS FROM THE L.A. COUNTY ROAD DEPT., DISTRICT OFFICE NO. _____ AND PAY A FEE TO THE COUNTY ENGINEER, 800 S. VERNON AVENUE, LOS ANGELES, CA 90020, TO COVER THE COST OF CONSTRUCTION INSPECTION AND RECORD PLANS.
- 8. IF WORK IS TO BE DONE IN A STATE HIGHWAY, A PERMIT MUST BE OBTAINED FROM THE STATE OF CALIFORNIA, DIVISION OF HIGHWAYS, 120 SOUTH BRING STREET, LOS ANGELES, CALIFORNIA.
- 9. APPROVAL OF THIS PLAN BY THE COUNTY OF LOS ANGELES DOES NOT CONSTITUTE A REPRESENTATION AS TO THE ACCURACY OF THE LOCATION OF OR THE EXISTENCE OR NON-EXISTENCE OF ANY UNDERGROUND UTILITY PIPE, OR STRUCTURE WITHIN THE LIMITS OF THE PROJECT. THIS NOTE APPLIES TO ALL PAGES.
- 10. REFER TO SECTION 7.36.41 OF THE STANDARD SPECIFICATIONS, REGARDING SAFETY ORDERS.
- 11. PRIOR TO THE ISSUANCE OF THE REQUIRED SEWER CONSTRUCTION PERMIT, THE CONTRACTOR SHALL OBTAIN AND FILE WITH THE COUNTY ENGINEER COMES OR A PERMIT TO EXCAVATE IN COUNTY STREETS FROM THE LOS ANGELES COUNTY ROAD DEPARTMENT, A PERMIT FOR EXCAVATION AND TRENCHES FROM THE STATE OF CALIFORNIA, DIVISION OF INDUSTRIAL SAFETY AND A CERTIFICATE OF WORKERS COMPENSATION INSURANCE WITH THE DEPARTMENT OF COUNTY ENGINEER, 800 SOUTH VERNON, RM. 408, LOS ANGELES, CALIFORNIA 90020, NAMED AS THE CERTIFICATE HOLDER TO BE NOTIFIED 30 DAYS PRIOR TO CANCELLATION OF POLICY.

CONSTRUCTION NOTES:

- 1. WORK SHALL BE CONSTRUCTED ACCORDING TO THE STANDARD SPECIFICATIONS FOR PUBLIC WORKS CONSTRUCTION (1986 EDITION) WITH THE SUPPLEMENTS AND COUNTY ENGINEER SPECIAL PROVISIONS FOR THE CONSTRUCTION OF SANITARY SEWERS DATED 10/27/85, 1/27/86, AND SHALL BE PROSECUTED ONLY IN THE PRESENCE OF THE COUNTY ENGINEER.
- 2. THE CONTRACTOR SHALL NOTIFY THE ENVIRONMENTAL DEVELOPMENT DIVISION BY TELEPHONE, 728-2188, AT LEAST TWENTY-FOUR HOURS BEFORE STARTING ANY WORK UNDER THIS CONTRACT.
- 3. HOUSE LATERALS TO BE CONSTRUCTED WITH INVERTS AT PROPERTY LINE 8 FEET BELOW CURB GRADE EXCEPT AS NOTED.
- 4. WYE OR TEE BRANCHES MAY BE USED FOR CONNECTIONS TO MAINLINE SEWERS EXCEPT AS NOTED.
- 5. ALL STRUCTURES SHALL BE EITHER BRICK MANHOLES PER S-3 OR PRECAST CONCRETE MANHOLES PER S-3L EXCEPT AS NOTED.
- 6. PROVIDE STAKES ON THE PROPERTY LINE OR PROPERTY LINES PRODUCED AT RIGHT ANGLES TO THE SEWER LINE AT THE CENTER LINE OF EACH MANHOLE.
- 7. MANHOLE TOPS IN UNIMPROVED RIGHTS OF WAY TO BE SIX INCHES ABOVE FINISHED GRADE.
- 8. VITRIFIED CLAY PIPE JOINTS SHALL BE TYPE "D" OR "B" PER STANDARD SPECIFICATIONS SECTION 285-2.
- 9. IF A POWER POLE IS WITHIN THREE FEET OF THE SEWER, THE SEWER SHALL BE ENCASED, PER S-25, CASE II, TWO FEET ON EACH SIDE FROM THE POLE TO THE INTERFERENCE.
- 10. IF DURING THE COURSE OF CONSTRUCTION IT IS DETERMINED THAT THERE IS LESS THAN FOUR FEET OF COVER OVER THE TOP OF A MAIN LINE OR HOUSE LATERAL SEWER WHICH IS NOT INDICATED ON THE PLANS, THE PIPE SHALL BE ENCASED PER S-25, CASE II UNLESS OTHERWISE APPROVED BY THE COUNTY ENGINEER.
- 11. ALL JOINTS BETWEEN CAST IRON PIPE AND VITRIFIED CLAY PIPE SHALL BE MADE WITH A RUBBER SLEEVE JOINT, TYPE "C" OR "D", WITH BUSHING IF NECESSARY PER STANDARD SPECIFICATIONS, SECTION 285-3.
- 12. ALL JOINTS BETWEEN CAST IRON PIPE, A.B.S.C. OR PRECAST CONCRETE MANHOLES SHALL BE APPROVED FITTINGS.
- 13. SEWERS TO BE TESTED FOR LEAKAGE PER SECTION 285-4 OF THE STANDARD SPECIFICATIONS AND SPECIAL PROVISIONS.
- 14. REPAIRS TO ALL TRENCHES WITHIN PAVED AREAS TO MEET L.A. COUNTY ROAD DEPT. OR CALIFORNIA STATE HIGHWAY REQUIREMENTS IN ACCORDANCE WITH PERMITS.
- 15. FULL COMPLIANCE WITH SECTION 285-1.33 OF THE SPECIAL PROVISIONS WILL BE REQUIRED FOR BACKFILL IN STREETS. CERTIFICATION OF BACKFILL CONSTRUCTION AND SAND EQUIVALENTS BY A QUALIFIED REGISTERED TESTING LABORATORY SHALL BE PROVIDED BY THE PERMITTEE PRIOR TO THE ISSUANCE OF A CERTIFICATE OF PARTIAL ACCEPTANCE.
- 16. SPECIAL BACKFILL IN EASEMENT CONSTRUCTION (A) BACKFILL TRENCH AND REPLACE OTHER EARTH SO AS TO ACHIEVE THE NATURAL OR PREVIOUS GRADES AND SLOPES SHOWN ON THE DRAWING PLANS PROVIDED FOR THIS DEVELOPMENT BY THE BUILDING AND SAFETY DIVISION; (B) ALL BACKFILL AND EARTH REPLACED SHALL BE COMPACTED TO A MINIMUM OF 80% OF MAXIMUM DENSITY PER A.S.T.M. STD. METHOD OF TEST D958T AS MODIFIED. ACCEPTABLE CERTIFICATION OF SOIL COMPACTION SHALL BE SUBMITTED TO THE ENVIRONMENTAL DEVELOPMENT DIVISION.

PROFILE, ALIGNMENT AND GRADE OF PAGE 1
SANITARY SEWERS

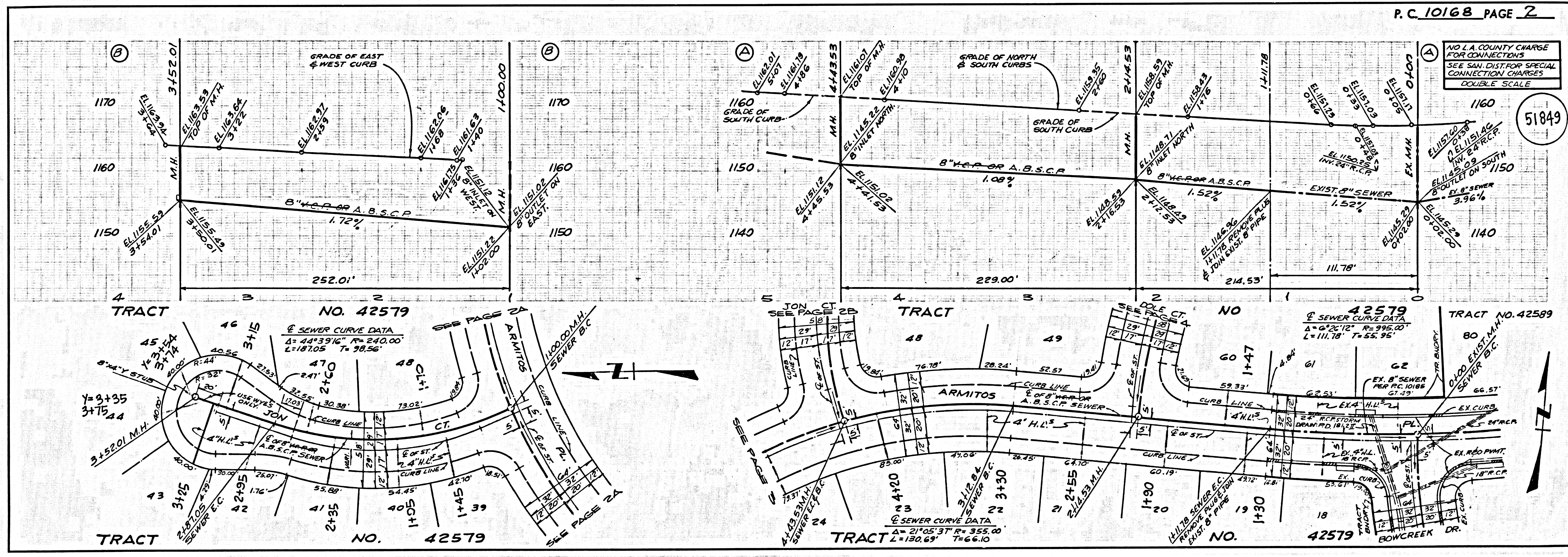
TO BE CONSTRUCTED IN
TRACT NO. 42579
 PRIVATE CONTRACT NO. 10168

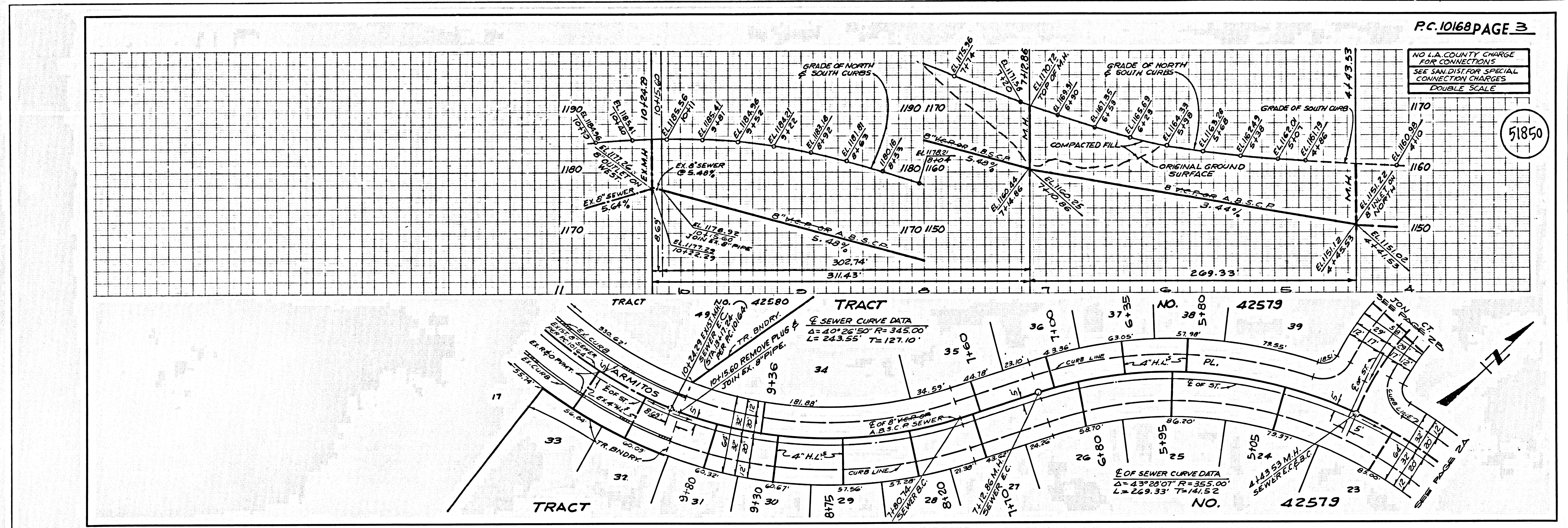
W.S. 39-D,2
 3 SHEETS, 5 PAGES
 SCALE: VERT. 1"=8'
 HORIZ. 1"=40'
 JULY, 1983
 PREPARED IN THE OFFICES OF
 JOHN N. SARRACINO
 REG. C.E. No. 19233

THE FOLLOWING LATEST REVISIONS STANDARDS PLANS ON FILE IN THE OFFICE OF THE COUNTY ENGINEER SHALL APPLY IN THE CONSTRUCTION OF THIS PROJECT:

REVISION	DATE
MINIMUM PUBLIC SAFETY REQUIREMENTS	5-8
BRICK MANHOLE	5-8
STANDARD MANHOLE ETP	5-17
BEDDING FOR SEWER PIPE	5-21
CHASING AND ENCASUREMENT	5-23
WYE OR TEE BRANCH	5-23
ALLOWABLE TRENCH WIDTHS	5-23
LOCKING MANHOLE FRAME AND COVER	5-24
NON-HIGHWAY PRECAST CONCRETE MANHOLE	5-24
BEDDING REQUIREMENTS FOR PLASTIC PIPE	5-24A

COUNTY OF LOS ANGELES, CALIFORNIA
 STEPHEN J. KOONCE, COUNTY ENGINEER WALTER E. GARRISON, CHIEF ENGINEER
 APPROVED: *John N. Sarracino* DATE: *10/20/83*
 CHECKED: *Rafael David Lant* DATE: *10/20/83*
 REG. C.E. NO. 16787
 SAN DIMAS BLDG. DIST. 10.00

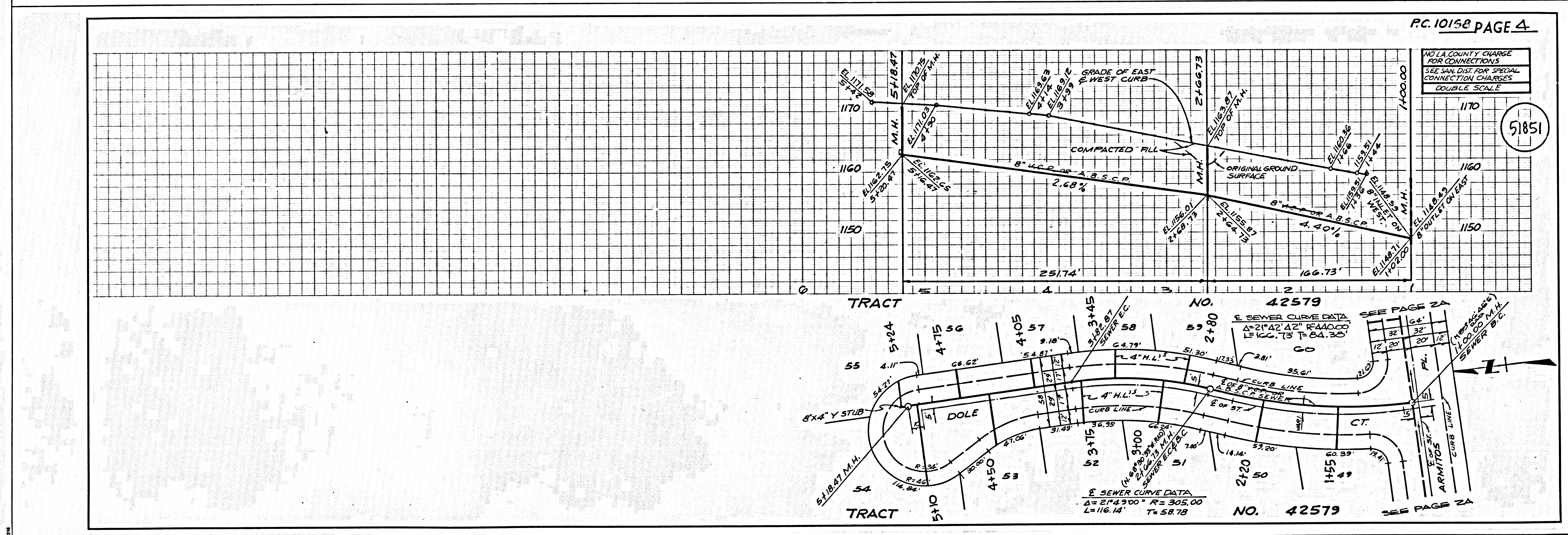




5

8210129

67254



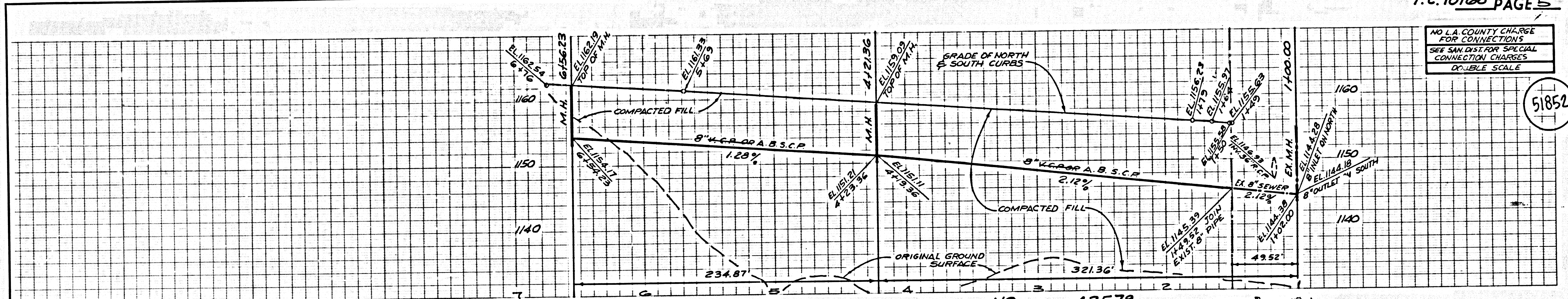
6

04

72487

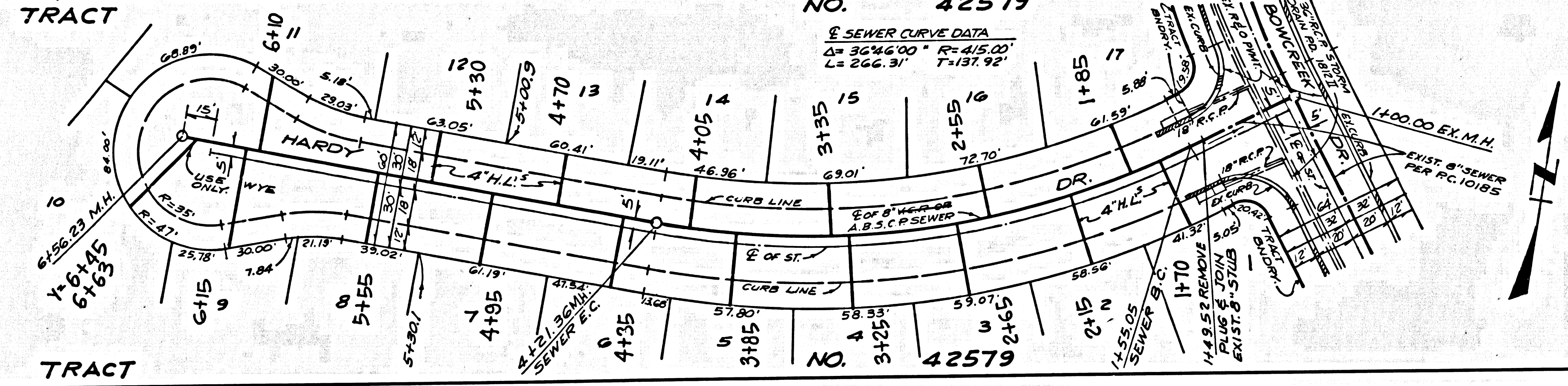
NO L.A. COUNTY CHARGE FOR CONNECTIONS SEE SAN DIST FOR SPECIAL CONNECTION CHARGES DOUBLE SCALE

51852

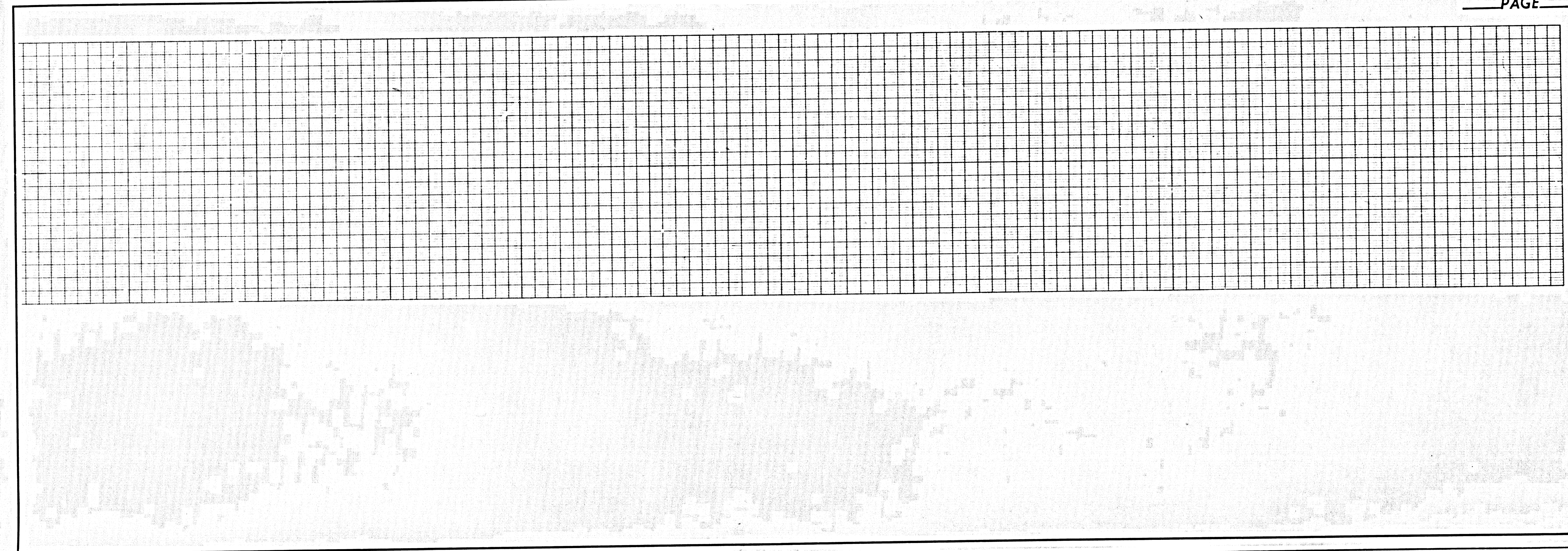


TRACT NO. 42579

SEWER CURVE DATA
Δ = 3046.00° R = 415.00'
L = 266.31' T = 137.92'



PAGE



3

BA 1018

45218

NO

TRACT