

SANITARY SEWERS

TO BE CONSTRUCTED IN

R/W EAST SADDLEBACK ROAD

PRIVATE CONTRACT NO. 10173

A-53

W.S. 62

1 SHEET, 2 PAGES

50482

SCALE: VERT. 1"=4' HORIZ. 1"=40' JULY 1983 PREPARED IN THE OFFICES OF ENGINEERING SERVICE CORPORATION

LEGEND: MINIMUM PUBLIC SAFETY REQUIREMENTS \$3, BRICK MANHOLE \$3, STANDARD MANHOLE STEP \$17, BRIDGING FOR SEWER PIPE \$11, CRADLING AND ENCASEMENT \$30, WYE OR TE CONNECTION \$12, ALLOWABLE BRIDGE WIDTHS \$33, JOICING MANHOLE FRAME AND COVER \$35, HIGH STRENGTH PRECAST CONCRETE MANHOLE \$26, RECTANGULAR SHALLOW MANHOLE \$-7, PRECAST CONCRETE SHALLOW MANHOLE \$-5.52, RECTANGULAR MANHOLE FRAME & COVERS \$-16

COUNTY OF LOS ANGELES, CALIFORNIA STEPHEN J. KOENIG, COUNTY ENGINEER WALTER E. GARRISON, CHIEF ENGINEER APPROVED: George D. Smith, 10/14/83

DOUBLE SCALE

CONSTRUCTION NOTES: (CONT.)

- 16. WYE BRANCHES ONLY MAY BE USED FOR CONNECTIONS TO MAIN LINE SEWER IF A.B.S.C.P. IS USED. 17. ALL JOINTS BETWEEN CAST IRON PIPE AND A.B.S.C.P. SHALL BE MADE WITH APPROVED FITTINGS. 18. FULL COMPLIANCE WITH PART IV OF THE SPECIAL PROVISIONS IS REQUIRED FOR THE INSTALLATION OF A.B.S. COMPOSITE PIPE AND A.B.S. SOLID WALL HOUSE LATERALS.

NO CONNECTION FOR THE DISPOSAL OF INDUSTRIAL WASTES SHALL BE MADE TO SEWERS SHOWN ON THESE DRAWINGS UNTIL A PERMIT FOR INDUSTRIAL WASTEWATER DISCHARGE HAS BEEN ISSUED BY THE SANITATION DISTRICTS FOR SAID CONNECTION.

BEFORE BREAKING INTO OR CONSTRUCTION ON A COUNTY SANITATION DISTRICT SEWER AND PRIOR TO FINAL ACCEPTANCE OF THE PROJECT, SANITATION DISTRICT INSPECTOR SHALL BE NOTIFIED BY PHONE 962-8605, SO THAT REQUIRED INSPECTION CAN BE MADE.

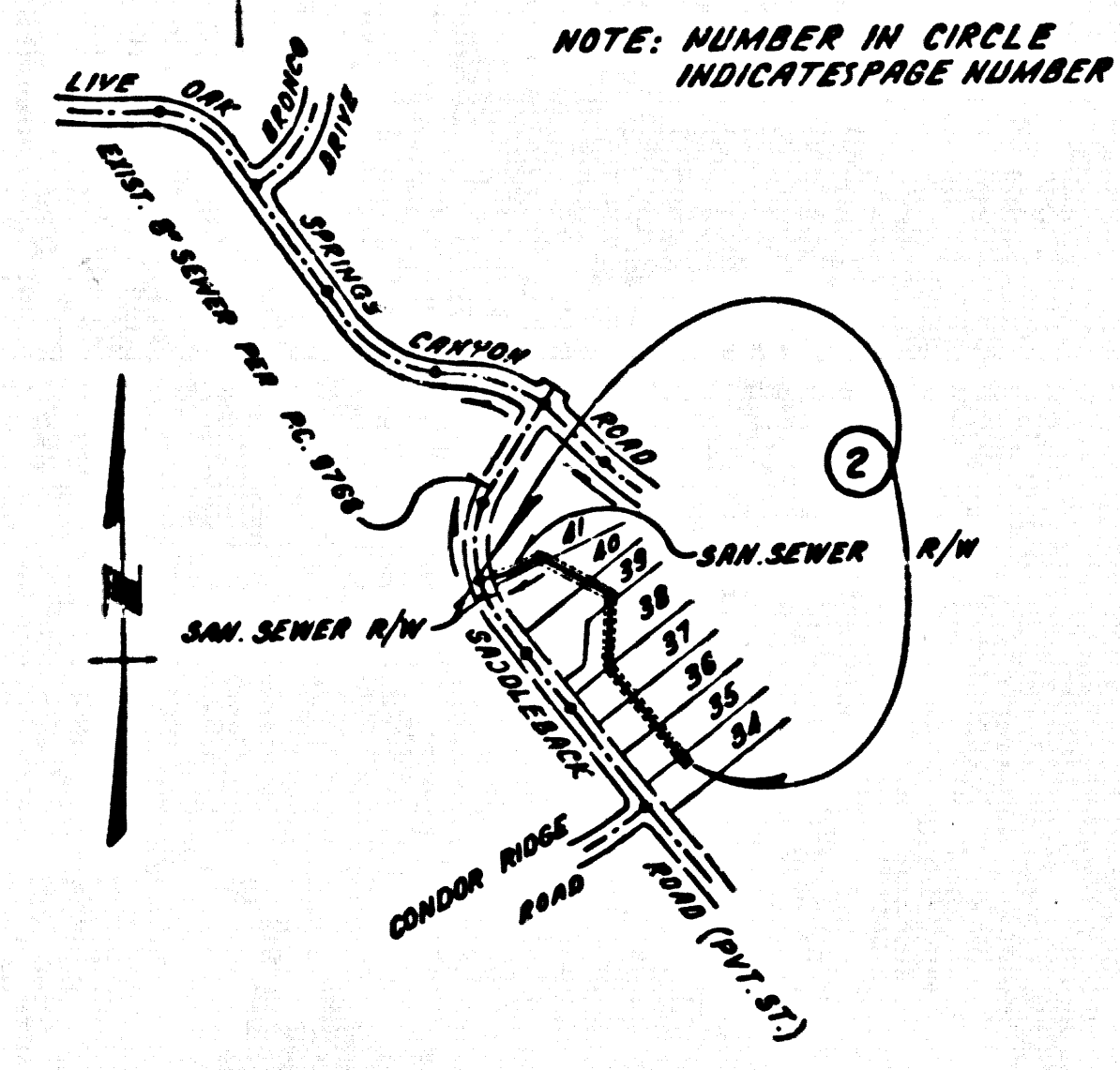
GENERAL NOTES:

- 1. ELEVATIONS ARE IN FEET ABOVE U.S.C. & G.S. SEA LEVEL DATUM OF 1929. 2. NO REVISIONS SHALL BE MADE IN THESE PLANS WITHOUT THE APPROVAL OF THE COUNTY ENGINEER. 3. NO REPRESENTATIVE OF THE COUNTY ENGINEER WILL SURVEY OR LAY OUT ANY PORTION OF THE WORK.

CONSTRUCTION NOTES:

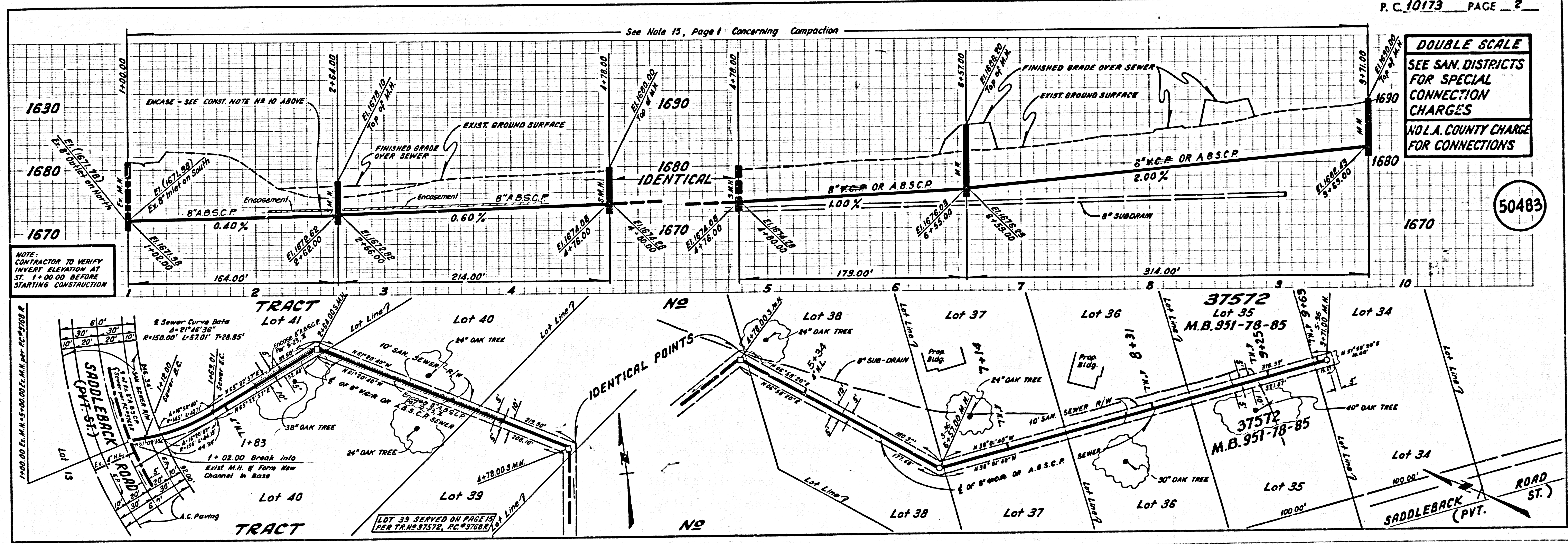
- 1. WORK SHALL BE CONSTRUCTED ACCORDING TO THE STANDARD SPECIFICATIONS FOR PUBLIC WORKS CONSTRUCTION (1982 EDITION WITH 1983 SUPPLEMENTS) & COUNTY ENGINEER SPECIAL PROVISIONS FOR THE CONSTRUCTION OF SANITARY SEWERS DATED SEPTEMBER 1978. 2. THE CONTRACTOR SHALL NOTIFY THE ENVIRONMENTAL DEVELOPMENT DIVISION BY TELEPHONE 726-2156 AT LEAST TWENTY-FOUR HOURS BEFORE STARTING ANY WORK UNDER THE CONTRACT.

B.M. 81 1668 ELEV. 1583.373 25' HIGH IN WELL 18" IN DIA. 8' 1" DEPT. E. CIL SAND CANYON RD. 27 FT. NE PP SPRINGS CANYON RD. 27 FT. NE PP 155006 E. MKD (7124) USE E. EDGE NEWHALL QUAD. 1972.



INDEX MAP

Scale: 1" = 600' SEWER IN R/W EAST OF SADDLEBACK ROAD P.C. 10173



DOUBLE SCALE SEE SAN. DISTRICTS FOR SPECIAL CONNECTION CHARGES NO L.A. COUNTY CHARGE FOR CONNECTIONS

50483