

**SANITARY SEWERS**  
TO BE CONSTRUCTED IN

**TRACT No 36813**  
PRIVATE CONTRACT NO. 10176

W.S. 39-0, 2  
4 SHEETS, 7 PAGES

51798

SCALE: VERT. 1"=5'  
HORIZ. 1"=40'  
JULY, 1983  
PREPARED IN THE OFFICES OF  
LAND & MILLER INC.  
6065 WASHINGTON DRIVE  
SAN ANTONIO, CA 91108  
REG. C. E. No. 19233

**PRIVATE ENGINEERS NOTICE TO CONTRACTORS**

The existence and location of any underground utility pipes or structures shown on these plans are obtained by search of the available records. To the best of our knowledge there are no existing utilities except as shown on these plans. The contractor is required to take due precautionary measures to protect the utility lines shown and any other lines not of record or not shown on these plans.

*J.H.L.*  
Registered Professional R.C.E. 19233

NO CONNECTION FOR THE DISPOSAL OF INDUSTRIAL WASTES SHALL BE MADE TO SEWERS SHOWN ON THESE DRAWINGS UNTIL A PERMIT FOR INDUSTRIAL WASTEWATER DISCHARGE HAS BEEN ISSUED BY THE SANITATION DISTRICTS FOR SAID CONNECTION.

BEFORE BREAKING INTO OR CONSTRUCTION ON A COUNTY SANITATION DISTRICT SEWER AND PRIOR TO FINAL ACCEPTANCE OF THE PROJECT, SANITATION DISTRICT INSPECTOR SHALL BE NOTIFIED BY PHONE - 962-8605, SO THAT REQUIRED INSPECTION CAN BE MADE.

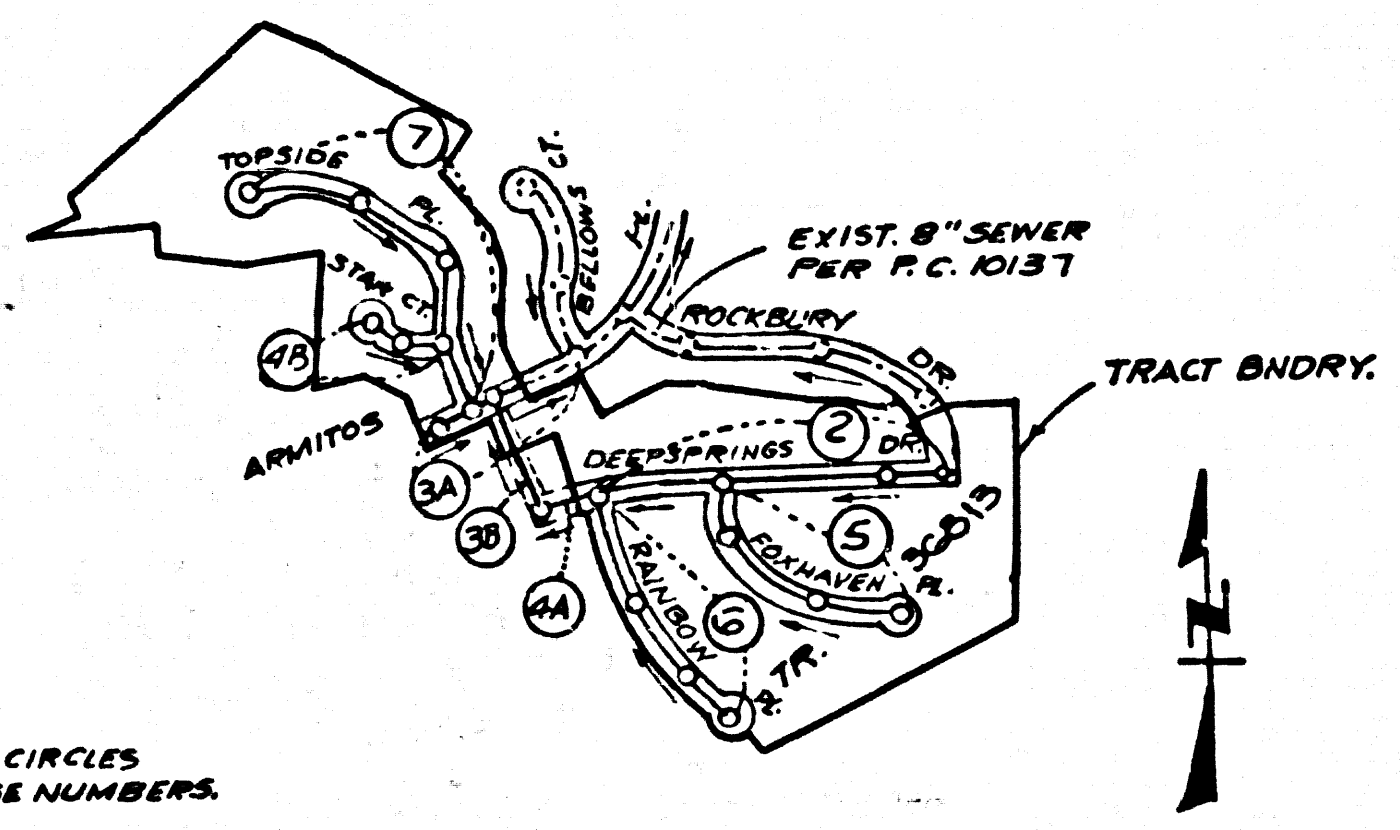
**CONSTRUCTION NOTES CONT'D.**

- FULL COMPLETION WITH PART III OF THE SPECIAL PROVISIONS IS REQUIRED FOR THE INSTALLATION OF A.B.S. COMPOSITE PIPE.
- MANHOLE HOLES, STOP CASSETS & CLEANOUTS ARE PROVIDED FOR THE CONNECTION OF A.B.S. COMPOSITE PIPE TO MANHOLE STRUCTURES.
- A.B.S. SOLID WALL PIPE MUST BE USED FOR NYE & HOUSE LATERAL CONNECTIONS TO A.B.S. COMPOSITE MANHOLE SEWER PIPE.
- A.B.S. COMPOSITE PIPE SHALL BE LAPPED IN CONFORMANCE WITH THE TABLE IN SECTION 8-5.1 OF PART III OF THE SPECIAL PROVISIONS.
- TURK DRAINAGE DEFLECTION COULTERS ARE REQUIRED FOR RADIIUS OF CURVATURE LESS THAN 300 FEET WHEN USING 8" A.B.S.C.P.
- NO CONNECTIONS FOR DISPOSAL OF INDUSTRIAL WASTES IS ALLOWED FOR A.B.S. COMPOSITE PIPE IS USED.
- SEWER LINE CURVATURE SHALL NOT BE ACHIEVED BY PULLING OF JOINTS OR REVELING PIPE ENDS WHEN USING PLASTIC PIPE INCLUDING A.B.S. COMPOSITE PIPE.

NOTE: ISSUE NO HOUSE CONNECTION PERMITS UNTIL P.C.'S 10134, 10135, 10136 & 10137 ARE ACCEPTED.

NOTE: ISSUE HOUSE CONNECTION PERMIT FOR LOTS 40 & 50 FROM P.C. 10137, PAGE 2.

B.M. CG 3911 ELEV. 895.556  
LET IN E END CB 44 FT 5 + 96 FT  
W/ CUL INT GRAND AVE + DIAMOND  
BAR BLVD (MKD BM C-12)  
OTTERBEIN QUAD. 19 75



INDEX MAP  
TRACT No 36813  
P.C. 10176  
SCALE: 1"=600'

PAGES	REVERSE TRACT BOUNDARY
PAGES	REVERSE LOT NUMBERS
PAGE	REVERSE MAINLINE SEWER GRADE FROM STA. 140+00 TO STA. 147+02 & ADD BRACEMENT AT STA. 141+7.
PAGE	REVERSE MAINLINE SEWER PROFILE FROM STA. 140+00 TO STA. 151+36.01 & SEWER DRAIN PROFILE, DELETE LOTS & STREET EAST OF ROCKBURY DRIVE.

REVISION No. 1  
APPROVED BY:  
*Ralph Davis*  
L.A. COUNTY ENGINEER  
DATE: 3/11/84

**GENERAL NOTES:**

- ELEVATIONS ARE IN FEET ABOVE U.S.C. & G.S. SEA LEVEL DATUM OF 1983.
- NO REVISIONS SHALL BE MADE IN THESE PLANS WITHOUT THE APPROVAL OF THE COUNTY ENGINEER.
- GRADES TO WHICH THE IMPROVEMENT IS TO BE CONSTRUCTED ARE SHOWN ON PLANS AND PROFILES. GRADE POINTS FOR TOP OF CURBS, CENTER LINE OF STREETS, OR CENTER LINE OF ALLEYS ARE SHOWN BY CIRCLES ON PROFILES. AT ALL POINTS BETWEEN DESIGNATED POINTS THE GRADE SHALL BE ESTABLISHED SO AS TO CONFORM TO A STRAIGHT LINE DRAWN BETWEEN SAID DESIGNATED POINTS.
- THE PRIVATE ENGINEER SHALL FURNISH THE COUNTY ENGINEER WITH GRADE SHEETS AND STATIONING FOR ALL HOUSE LATERALS AND "T" OR "T" BRANCHES AND SHALL PROVIDE STAKES FOR THEM AT THEIR PROPER LOCATIONS WITH STATIONING PLAINLY MARKED. ALL HOUSE LATERALS SHALL BE CONSTRUCTED IN A STRAIGHT ALIGNMENT AT RIGHT ANGLES FROM THE MAIN LINE SEWER EXCEPT AS SHOWN ON THE PLANS. HOUSE LATERALS FROM CHIMNEYS SHALL NOT HAVE AN ANGLE OF LESS THAN 45° WITH THE MAIN LINE SEWER. ANY CHANGE IN ALIGNMENT SHALL BE REQUESTED IN WRITING BY THE PRIVATE ENGINEER.
- THE PRIVATE ENGINEER SHALL FURNISH THE HOUSE LATERAL DEPTH AT THE PROPERTY LINE BELOW THE CURB ELEVATION FOR EACH HOUSE LATERAL ON THE GRADE SHEET.
- BEFORE WORK CAN BE STARTED, THE CONTRACTOR MUST OBTAIN A PERMIT TO EXCAVATE IN COUNTY STREETS FROM THE L.A. COUNTY ROAD DEPT., DISTRICT OFFICE NO. 14, AND PAY A FEE TO THE COUNTY ENGINEER, 500 S. VERMONT AVENUE, LOS ANGELES, CA 90005, TO COVER THE COST OF CONSTRUCTION INSPECTION AND RECORD PLANS.
- IF WORK IS TO BE DONE IN STATE HIGHWAY, A PERMIT MUST BE OBTAINED FROM THE STATE OF CALIFORNIA, DIVISION OF HIGHWAYS, 120 SOUTH SPRING STREET, LOS ANGELES, CALIFORNIA.
- APPROVAL OF THIS PLAN BY THE COUNTY OF LOS ANGELES DOES NOT CONSTITUTE A REPRESENTATION AS TO THE ACCURACY OF THE LOCATION OF OR THE EXISTENCE OR NON-EXISTENCE OF ANY UNDERGROUND UTILITY, PIPE, OR STRUCTURE WITHIN THE LIMITS OF THE PROJECT. THIS NOTE APPLIES TO ALL PAGES.
- REFER TO SECTION 7.16.1 OF THE STANDARD SPECIFICATIONS, REGARDING SAFETY ORDERS.
- PRIOR TO THE ISSUANCE OF THE REQUIRED SEWER CONSTRUCTION PERMIT, THE CONTRACTOR SHALL OBTAIN AND FILE WITH THE COUNTY ENGINEER COPIES OF A PERMIT TO EXCAVATE COUNTY STREETS FROM THE LOS ANGELES COUNTY ROAD DEPARTMENT, A PERMIT FOR EXCAVATIONS AND TRENCHES FROM THE STATE OF CALIFORNIA, DIVISION OF INDUSTRIAL SAFETY AND A CERTIFICATE OF WORKERS COMPENSATION INSURANCE WITH THE DEPARTMENT OF COUNTY ENGINEER, 800 SOUTH VERMONT, P.O. BOX 100, LOS ANGELES, CALIFORNIA 90005, NAMED AS THE CERTIFICATE HOLDER TO BE NOTIFIED 30 DAYS PRIOR TO CANCELLATION OF POLICY.

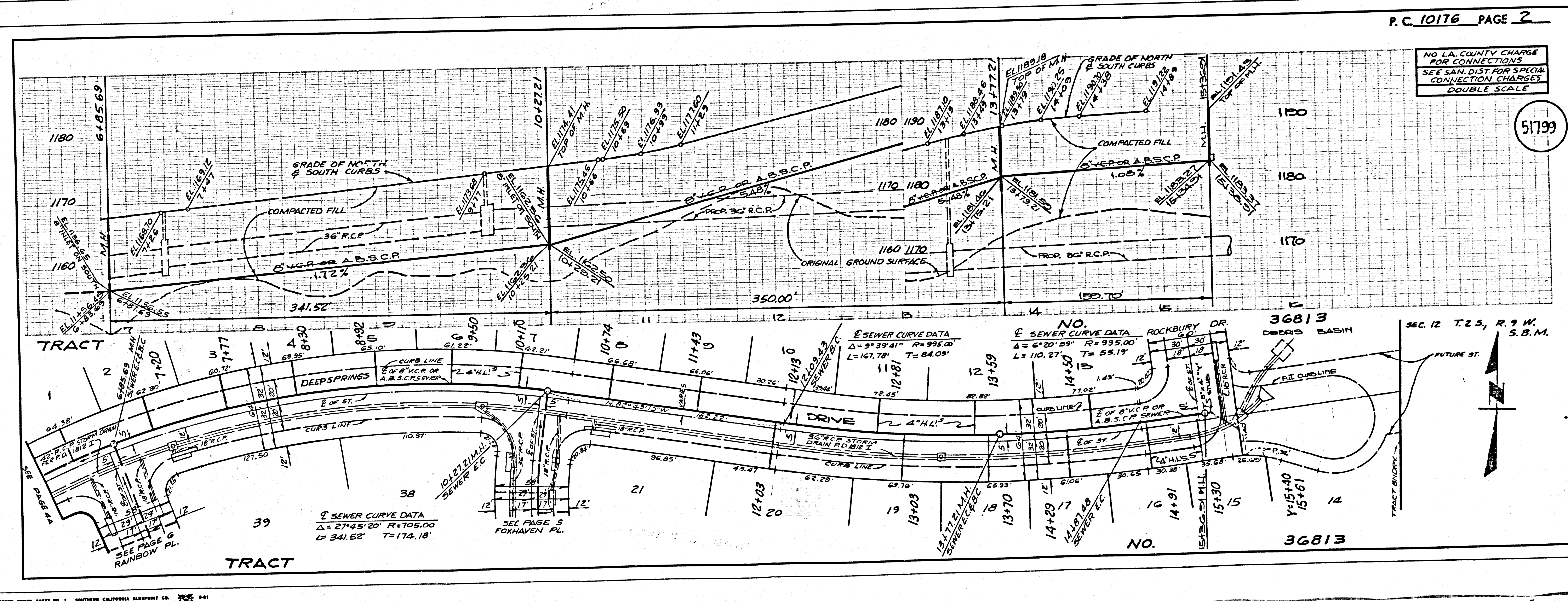
**CONSTRUCTION NOTES:**

- WORK SHALL BE CONSTRUCTED ACCORDING TO THE STANDARD SPECIFICATIONS FOR PUBLIC WORKS CONSTRUCTION (1982 EDITION WITH 1983 SUPPLEMENTS) AND COUNTY ENGINEER SPECIAL PROVISIONS FOR THE CONSTRUCTION OF SANITARY SEWERS DATED 12/1/82, AND SHALL BE PROSECUTED ONLY IN THE PRESENCE OF THE COUNTY ENGINEER.
- THE CONTRACTOR SHALL NOTIFY THE ENVIRONMENTAL DEVELOPMENT DIVISION BY TELEPHONE, 728-2189, AT LEAST TWENTY-FOUR HOURS BEFORE STARTING ANY WORK UNDER THIS CONTRACT.
- HOUSE LATERALS TO BE CONSTRUCTED WITH INVERTS AT PROPERTY LINE 8 FEET BELOW CURB GRADE EXCEPT AS NOTED.
- NYE OR "T" BRANCHES MAY BE USED FOR CONNECTIONS TO MAIN LINE SEWERS EXCEPT AS NOTED.
- ALL STRUCTURES SHALL BE EITHER BRICK MANHOLES PER S.D. SPEC. SECTION 8-5.1, EXCEPT AS NOTED.
- PROVIDE STAKES ON THE PROPERTY LINE OR PROPERTY LINES PRODUCED AT RIGHT ANGLES TO THE SEWER LINE AT THE CENTER LINE OF EACH MANHOLE.
- MANHOLE TOPS IN UNIMPROVED AREAS TO BE 2 FEET ABOVE FINISHED GRADE.
- WITHEDED CLAY PIPE JOINTS SHALL BE TYPE "D" OR "E" PER STANDARD SPECIFICATIONS SECTION 8-5.1.
- IF A POWER POLE IS WITHIN THREE FEET OF THE SEWER, THE SEWER SHALL BE ENCASED, PER S.D. CASE 8, TWO FEET ON EACH SIDE FROM THE POINT OF INTERFERENCE.
- IF DURING THE COURSE OF CONSTRUCTION IT IS DETERMINED THAT THERE IS LESS THAN FOUR FEET OF COVER OVER THE TOP OF A MAIN LINE OR HOUSE LATERAL SEWER WHICH IS NOT INDICATED ON THE PLANS, THE PIPE SHALL BE ENCASED PER S.D. CASE 8 UNLESS OTHERWISE APPROVED BY THE COUNTY ENGINEER.
- ALL JOINTS BETWEEN CLAY PIPE AND WITHEDED CLAY PIPE SHALL BE MADE WITH A RUBBER SLEEVE JOINT, TYPE "C" OR "D", (WITH RUBBER IF NECESSARY) PER STANDARD SPECIFICATIONS, SECTION 8-5.1.
- ALL JOINTS BETWEEN WITHEDED CLAY PIPE SHALL BE MADE WITH UNIMPROVED FITTINGS.
- ALL JOINTS BETWEEN WITHEDED CLAY PIPE SHALL BE MADE WITH UNIMPROVED FITTINGS.
- RESURFACE ALL TRENCHES WITHIN PAVED AREAS TO MEET L.A. COUNTY ROAD DEPT. OR CALIFORNIA STATE HIGHWAY REQUIREMENTS IN A 30% OVERLAP WITH FINISH.
- FULL COMPLIANCE WITH SECTION 8-5.1.3 OF THE SPECIAL PROVISIONS WILL BE REQUIRED FOR BACKFILL IN STREETS. CERTIFICATION OF BACKFILL COMPACTION AND SAND EQUIVALENTS BY A QUALIFIED, REGISTERED TESTING LABORATORY SHALL BE PROVIDED BY THE PERMITTEE PRIOR TO THE ISSUANCE OF A CERTIFICATE OF FINAL ACCEPTANCE.
- SPECIAL BACKFILL IN EXISTING CONSTRUCTION (A) BACKFILL TRENCH AND REPLACE OTHER EARTH SO AS TO ACHIEVE THE NATURAL OR FINISHED GRADES AND SLOPES SHOWN ON THE DRAWING PLAN APPROVED FOR THIS DEVELOPMENT BY THE BUILDING AND SAFETY DIVISION; (B) ALL BACKFILL AND EARTH REPLACED SHALL BE COMPACTED TO A MINIMUM OF 90% OF MAXIMUM DENSITY PER A.S.T.M. STD. METHOD OF TEST D1557 AS MODIFIED. ACCEPTABLE CERTIFICATION OF SUCH COMPACTION SHALL BE SUBMITTED TO THE ENVIRONMENTAL DEVELOPMENT DIVISION.

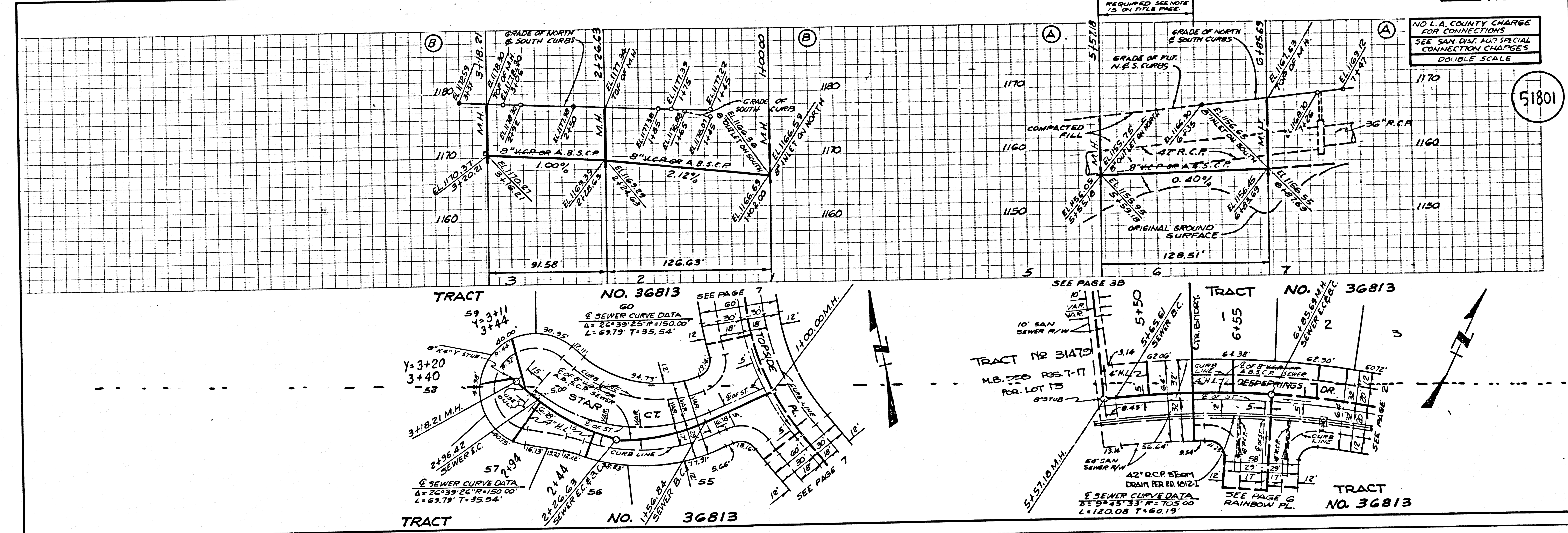
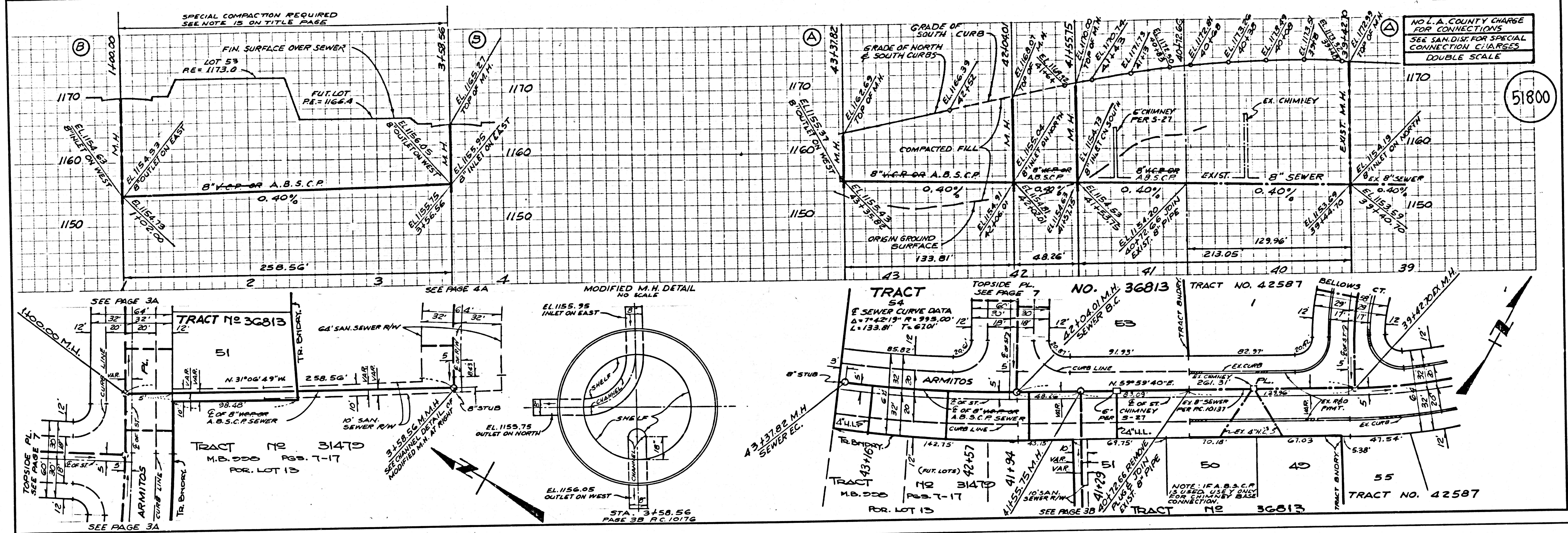
THE FOLLOWING LATEST REVISED STANDARD PLANS ON FILE IN THE OFFICE OF THE COUNTY ENGINEER SHALL APPLY IN THE CONSTRUCTION OF THIS PROJECT.

LEGEND	5-1
MINIMUM PUBLIC SAFETY REQUIREMENTS	5-2
BRICK MANHOLE	5-3
STANDARD MANHOLE STOP	5-4
BRICKING FOR SEWER PIPE	5-5
CLADDING AND BRACEMENT	5-6
NYE OR T SUPPORT	5-7
ALLOWABLE TRENCH WIDTHS	5-8
LOCKING MANHOLE FRAME AND COVER	5-9
NON-REINFORCED BRICK CONCRETE MANHOLE	5-10
LOADING REQUIREMENTS FOR PLASTIC PIPE	5-11
SPECIAL HOUSE LATERALS	5-12
CHIMNEY PIPE & BASE	5-13

COUNTY OF LOS ANGELES, CALIFORNIA  
STEPHEN J. KOONCE, COUNTY ENGINEER  
CHARLES W. CARRY, CHIEF ENGINEER  
CO. SAN RES. NO. 21  
APPROVED *Sam Miller* 8/20/83  
SAN DIMAS REGIONAL ENGINEER DATE  
CHECKED *Ralph Davis* 9/2/83  
DATE  
REG. C.E. NO. 15883  
SAN DIMAS BLDG. DIST. 10.00



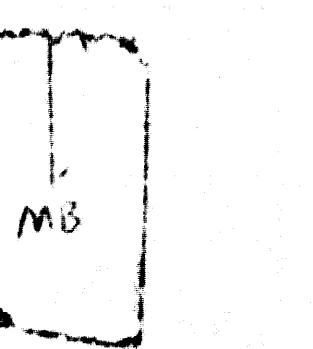
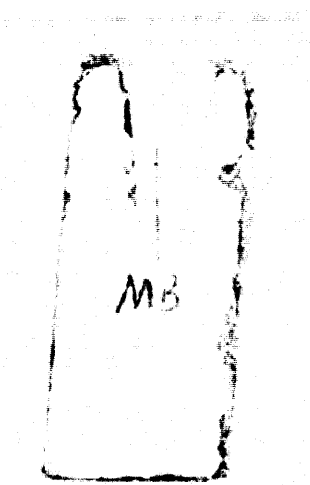
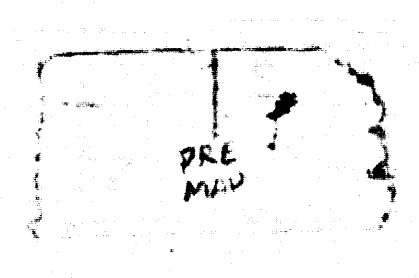




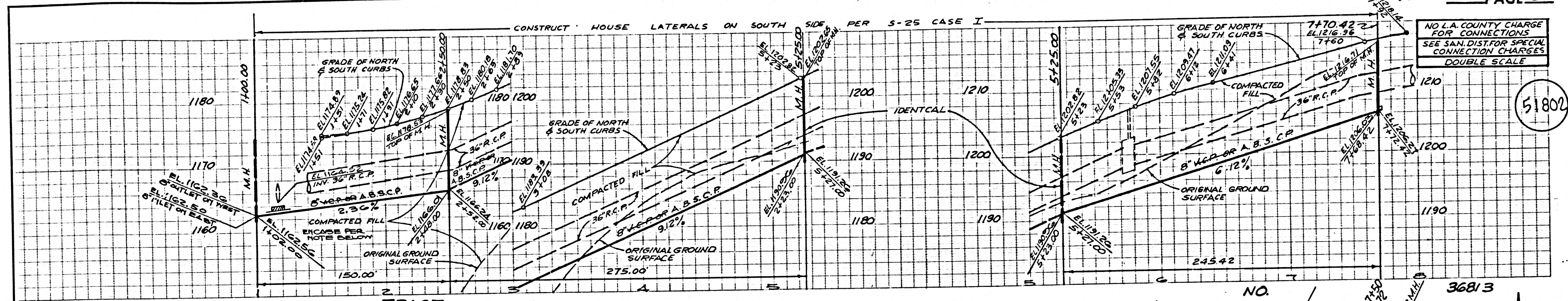
310134

11932

11932

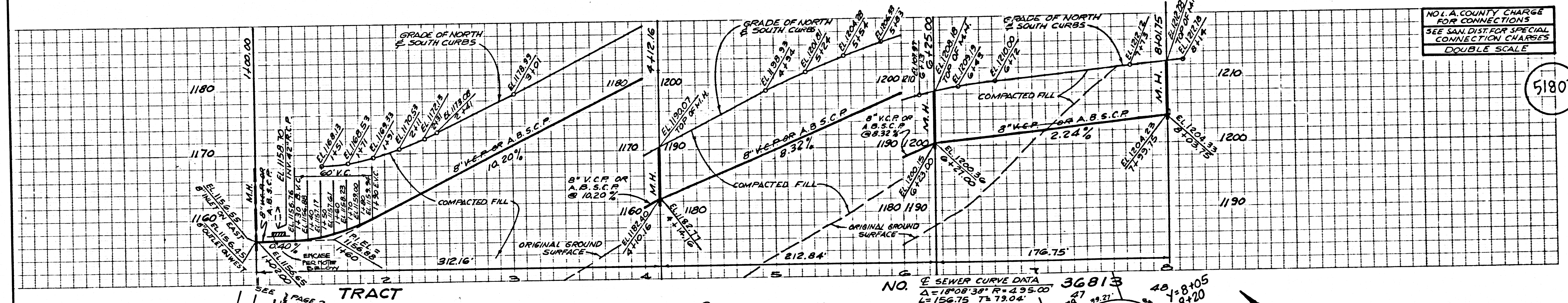
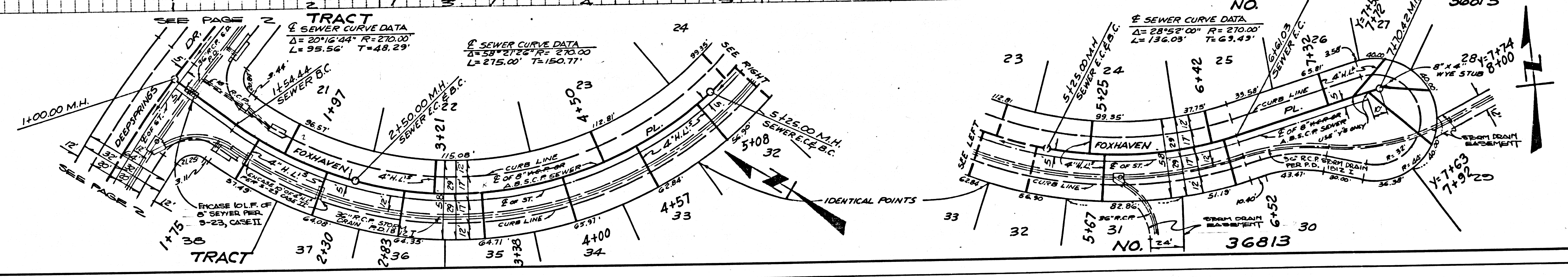






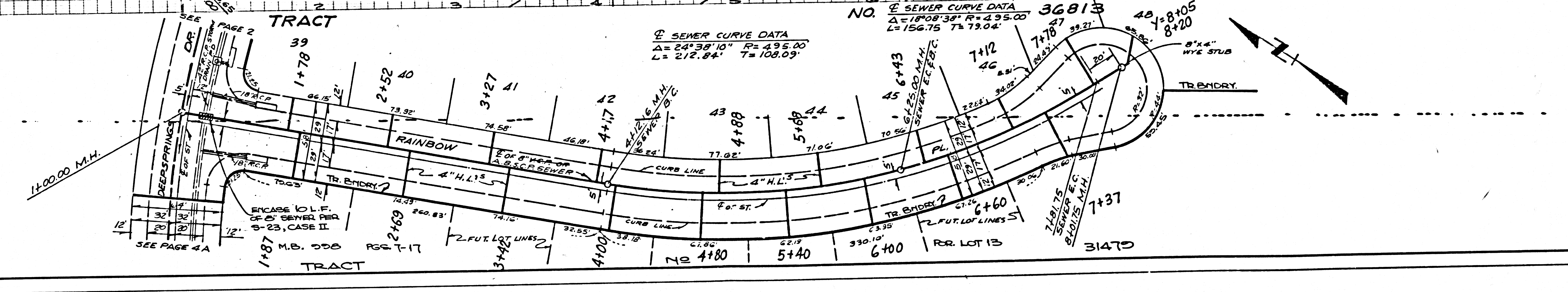
NO L.A. COUNTY CHARGE FOR CONNECTIONS  
 SEE SAN. DIST. FOR SPECIAL CONNECTION CHARGES  
 DOUBLE SCALE

51802



NO L.A. COUNTY CHARGE FOR CONNECTIONS  
 SEE SAN. DIST. FOR SPECIAL CONNECTION CHARGES  
 DOUBLE SCALE

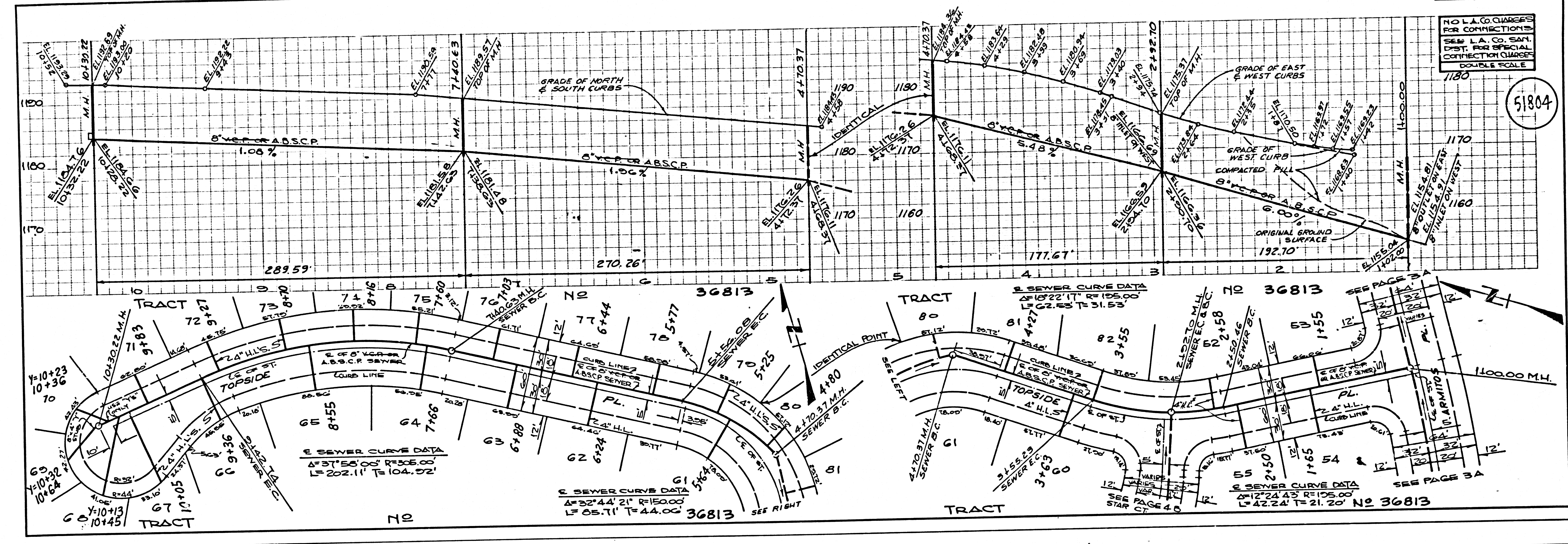
51803





NO L.A. CO. CHARGES FOR CONNECTIONS  
SEE L.A. CO. SAN. DIST. FOR SPECIAL CONNECTION CHARGES  
DOUBLE SCALE

51804



OSHALO L.A. COUNTY SEWER SHEET NO. 2

4  
P.C. 10119