

SANITARY SEWERS

TO BE CONSTRUCTED IN

TRACT NO. 35606

PRIVATE CONTRACT NO. 10183

W.S. 38-D,5
3 SHEETS, 6 PAGES

50486

SCALE: VERT. 1" = 4' HORIZ. 1" = 40'
AUGUST, 1983
PREPARED IN THE OFFICES OF
PFEILER & ASSOCIATES ENGINEERS
1559 W. COMMONWEALTH AVE., FULLERTON, CALIFORNIA 92633
BY: *Pfeiler & Associates*
REG. C. E. No. 12507

THE FOLLOWING LATEST REVISED STANDARD PLANS ON FILE IN THE OFFICE OF THE COUNTY ENGINEER SHALL APPLY IN THE CONSTRUCTION OF THIS PROJECT.

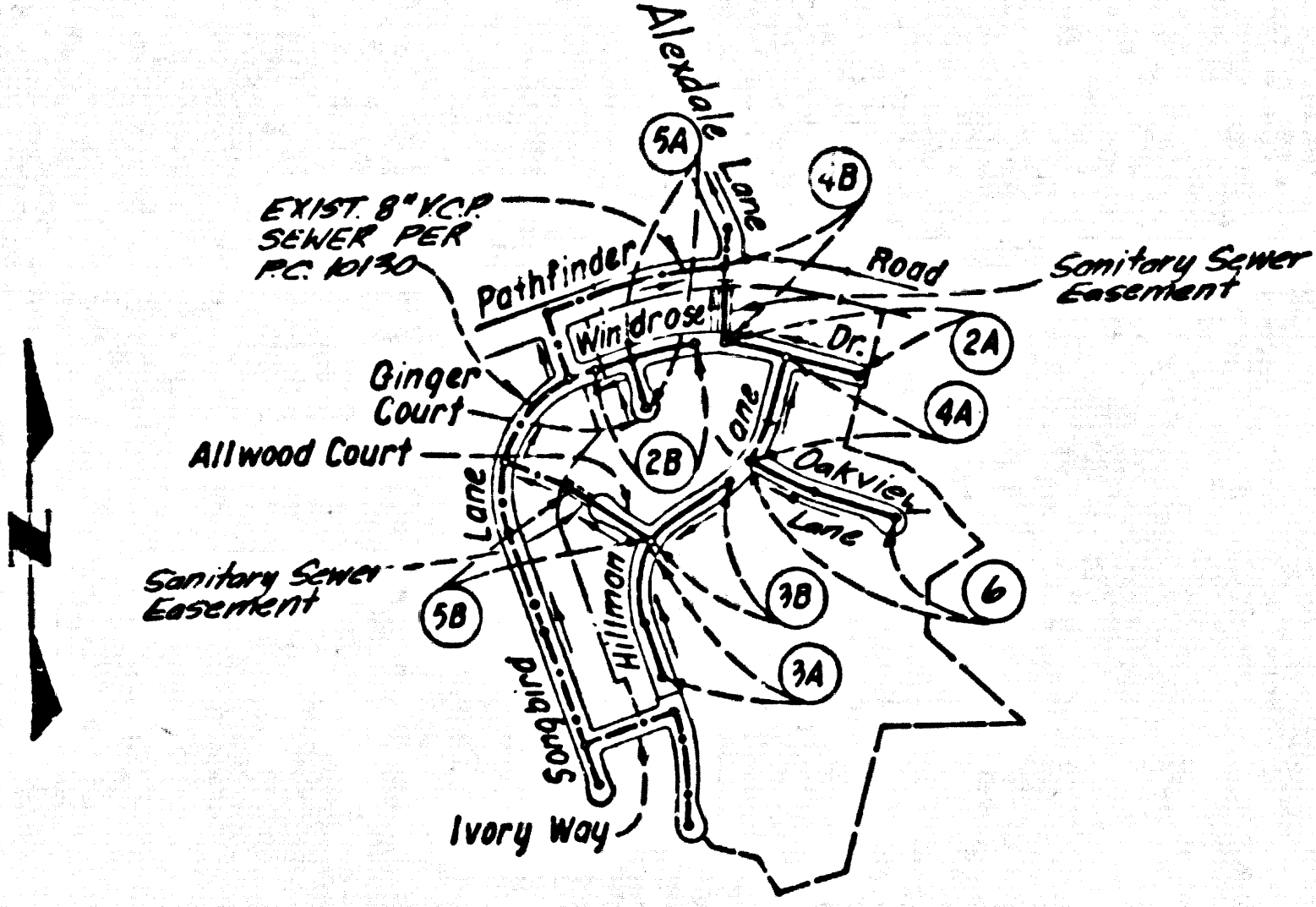
REGIONS	5-1
MINIMUM PUBLIC SAFETY REQUIREMENTS	5-2
STANDARD MANHOLE STEP	5-3
REVISIONS FOR SEWER PIPE	5-4
CHASING AND ENCLOSURE	5-5
TYPE OF THE SUPPORT	5-6
ALLOWABLE TRENCH WIDTH	5-7
LOCKING MANHOLE FRAME AND COVER	5-8
NON-SUPPORTING PRECAST CONCRETE MANHOLE	5-9
EROSION PROTECTION IN STEEP SLOPES	5-10

COUNTY OF LOS ANGELES, CALIFORNIA
STEPHEN J. KOONCE, COUNTY ENGINEER WALTER E. GARRISON, CHIEF ENGINEER
CO. SAN. DIST. NO. 31
APPROVED *Sam M. Miller 11/6/83* APPROVED *Walter E. Garrison 11/6/83*
SAM DIMAS REGIONAL ENGINEER DATE
CHECKED *Robert David Smith 11/10/83*
DATE
REG. C. E. No. 16873
LA PUENTE BLDG. DIST. 200

- #### GENERAL NOTES:
- ELEVATIONS ARE IN FEET ABOVE U.S.C. & G.S. SEA LEVEL DATUM OF 1988.
 - NO REVISIONS SHALL BE MADE IN THESE PLANS WITHOUT THE APPROVAL OF THE COUNTY ENGINEER.
 - NO REPRESENTATIVE OF THE COUNTY ENGINEER WILL SURVEY OR LAY OUT ANY PORTION OF THE WORK.
 - GRADES TO WHICH THIS IMPROVEMENT IS TO BE CONSTRUCTED ARE SHOWN ON PLANS AND PROFILES. GRADE POINTS FOR TOP OF CURBS, CENTER LINE OF STREETS, OR CENTER LINE OF ALLEYS ARE SHOWN BY CIRCLES ON PROFILES. AT ALL POINTS BETWEEN DESIGNATED POINTS THE GRADE SHALL BE ESTABLISHED SO AS TO CONFORM TO A STRAIGHT LINE DRAWN BETWEEN SAID DESIGNATED POINTS.
 - THE PRIVATE ENGINEER SHALL FURNISH THE COUNTY ENGINEER WITH GRADE SHEETS AND STATIONING FOR ALL HOUSE LATERALS AND 12" OR 18" TRENCHES AND SHALL PROVIDE STAKES FOR THEM AT THEIR PROPER LOCATIONS WITH STATIONING PLAINLY MARKED. ALL HOUSE LATERALS SHALL BE CONSTRUCTED IN A STRAIGHT ALIGNMENT AT RIGHT ANGLES FROM THE MAIN LINE SEWER EXCEPT AS SHOWN ON THE PLANS. HOUSE LATERALS FROM CHIMNEYS SHALL NOT HAVE AN ANGLE OF LESS THAN 45° WITH THE MAIN LINE SEWER. ANY CHANGE IN ALIGNMENT SHALL BE REQUESTED IN WRITING BY THE PRIVATE ENGINEER.
 - THE PRIVATE ENGINEER SHALL FURNISH THE HOUSE LATERAL DEPTH AT THE PROPERTY LINE BELOW THE TOP OF CURB ELEVATION FOR EACH HOUSE LATERAL ON THE GRADE SHEET.
 - BEFORE WORK CAN BE STARTED, THE CONTRACTOR MUST OBTAIN A PERMIT TO EXCAVATE IN COUNTY STREETS FROM THE L.A. COUNTY ROAD DEPT., DISTRICT OFFICE NO. 1, AND PAY A FEE TO THE COUNTY ENGINEER, 800 S. VERMONT AVENUE, LOS ANGELES, OR WORK TO COVER THE COST OF CONSTRUCTION INSPECTION AND RECORD PLANS.
 - IF WORK IS TO BE DONE IN A STATE HIGHWAY, A PERMIT MUST BE OBTAINED FROM THE STATE OF CALIFORNIA, DIVISION OF HIGHWAYS, 130 SOUTH SPRING STREET, LOS ANGELES, CALIFORNIA.
 - APPROVAL OF THIS PLAN BY THE COUNTY OF LOS ANGELES DOES NOT CONSTITUTE A REPRESENTATION AS TO THE ACCURACY OF THE LOCATION OF OR THE EXISTENCE OR NON-EXISTENCE OF ANY UNDERGROUND UTILITY PIPE, OR STRUCTURE WITHIN THE LIMITS OF THIS PROJECT. THIS NOTE APPLIES TO ALL PAGES.
 - REFER TO SECTION 7.18.4.1 OF THE STANDARD SPECIFICATIONS, REGARDING SAFETY ORDERS.
 - PRIOR TO THE ISSUANCE OF THE REQUIRED SEWER CONSTRUCTION PERMIT, THE CONTRACTOR SHALL OBTAIN AND FILE WITH THE COUNTY ENGINEER COPIES OF A PERMIT TO EXCAVATE IN COUNTY STREETS FROM THE LOS ANGELES COUNTY ROAD DEPARTMENT, A PERMIT FOR EXCAVATIONS AND TRENCHES FROM THE STATE OF CALIFORNIA, DIVISION OF INDUSTRIAL SAFETY AND A CERTIFICATE OF WORKER'S COMPENSATION INSURANCE WITH THE DEPARTMENT OF COUNTY ENGINEERS, 80 SOUTH VERMONT, RM. 106, LOS ANGELES, CALIFORNIA 90088, NAMED AS THE CERTIFICATE HOLDER TO BE NOTIFIED 30 DAYS PRIOR TO CANCELLATION OF POLICY.

- #### CONSTRUCTION NOTES:
- WORK SHALL BE CONSTRUCTED ACCORDING TO THE STANDARD SPECIFICATIONS FOR PUBLIC WORKS CONSTRUCTION 1988 EDITION WITH THE SUPPLEMENTS AND COUNTY ENGINEER SPECIAL PROVISIONS FOR THE CONSTRUCTION OF SANITARY SEWERS DATED SEPT. 21, 1978.
 - THE CONTRACTOR SHALL NOTIFY THE ENVIRONMENTAL DEVELOPMENT DIVISION BY TELEPHONE 728-2188, AT LEAST TWENTY-FOUR HOURS BEFORE STARTING ANY WORK UNDER THIS CONTRACT.
 - HOUSE LATERALS TO BE CONSTRUCTED WITH INVERTS AT PROPERTY LINE 6 FEET BELOW CURB GRADE EXCEPT AS NOTED.
 - WYE OR TEE BRANCHES MAY BE USED FOR CONNECTIONS TO MAINLINE SEWERS EXCEPT AS NOTED.
 - ALL STRUCTURES SHALL BE EITHER BRICK MANHOLES PER 8-3 OR PRECAST CONCRETE MANHOLES PER 8-3B, EXCEPT AS NOTED.
 - PROVIDE STAKES ON THE PROPERTY LINE OR PROPERTY LINES PRODUCED AT RIGHT ANGLES TO THE SEWER LINE AT THE CENTER LINE OF EACH MANHOLE.
 - MANHOLE TOPS IN UNIMPROVED RIGHTS OF WAY TO BE SIX INCHES ABOVE FINISHED GRADE.
 - WITRAPED CLAY PIPE JOINTS SHALL BE TYPE "D" OR "B" PER STANDARD SPECIFICATIONS SECTION 308-2.
 - IF A POWER POLE IS WITHIN THREE FEET OF THE SEWER, THE SEWER SHALL BE ENCASED PER 8-22, CASE II, TWO FEET ON EACH SIDE FROM THE POINT OF INTERFERENCE.
 - IF DURING THE COURSE OF CONSTRUCTION IT IS DETERMINED THAT THERE IS LESS THAN FOUR FEET OF COVER OVER THE TOP OF A MAIN LINE OR HOUSE LATERAL SEWER WHICH IS NOT INDICATED ON THE PLANS, THE PIPE SHALL BE ENCASED PER 8-22, CASE II UNLESS OTHERWISE APPROVED BY THE COUNTY ENGINEER.
 - ALL JOINTS BETWEEN CAST IRON PIPE AND WITRAPED CLAY PIPE SHALL BE MADE WITH A RUBBER SLEEVE JOINT, TYPE "C" OR "D", FIFTY BUSHINGS IF NECESSARY PER STANDARD SPECIFICATIONS SECTION 308-2.
 - SEWERS TO BE TESTED FOR LEAKAGE PER SECTION 308-1.1 OF THE STANDARD SPECIFICATIONS AND SPECIAL PROVISIONS.
 - RESURFACE ALL TRENCHES WITHIN PAVED AREAS TO MEET L.A. COUNTY ROAD DEPT. OR CALIFORNIA STATE HIGHWAY REQUIREMENTS IN ACCORDANCE WITH PERMITS.
 - PER COMPLIANCE WITH SECTION 308-1.3 OF THE SPECIAL PROVISIONS WILL BE REQUIRED FOR BACKFILL IN STREETS. CERTIFICATION OF BACKFILL, COMPACTION AND SAND EQUIVALENTS BY A QUALIFIED, REGISTERED TESTING LABORATORY SHALL BE PROVIDED BY THE PERMITTEE PRIOR TO THE ISSUANCE OF A CERTIFICATE OF PARTIAL ACCEPTANCE.
 - SPECIAL BACKFILL IN EASEMENT CONSTRUCTION: (A) BACKFILL TRENCH AND REPLACE OTHER EARTH SO AS TO ACHIEVE THE ORIGINAL OR FINISHED GRADES AND SLOPES SHOWN ON THE GRADING PLAN APPROVED FOR THIS DEVELOPMENT BY THE BUILDING AND SAFETY DIVISION; (B) ALL BACKFILL AND EARTH REPLACED SHALL BE COMPACTED TO A MINIMUM OF 80% OF MAXIMUM DRY UNIT WEIGHT PER A.S.T.M. METHOD OF TEST D1557 AS MODIFIED. ACCEPTABLE CERTIFICATION OF SUCH COMPACTION SHALL BE SUBMITTED TO THE ENVIRONMENTAL DEVELOPMENT DIVISION.

B.M. CG 3140 ELEV. 600.239
RDBM TAG W.C.B. 209 FT. N/O ENT.
TO S.W. WEST END ELECT. CO. 18 FT.
W/O C/L ALEXDALE LANE 137 FT.
S/O INT. AGUIRO STREET
OTTERBEIN QUAD. 1980



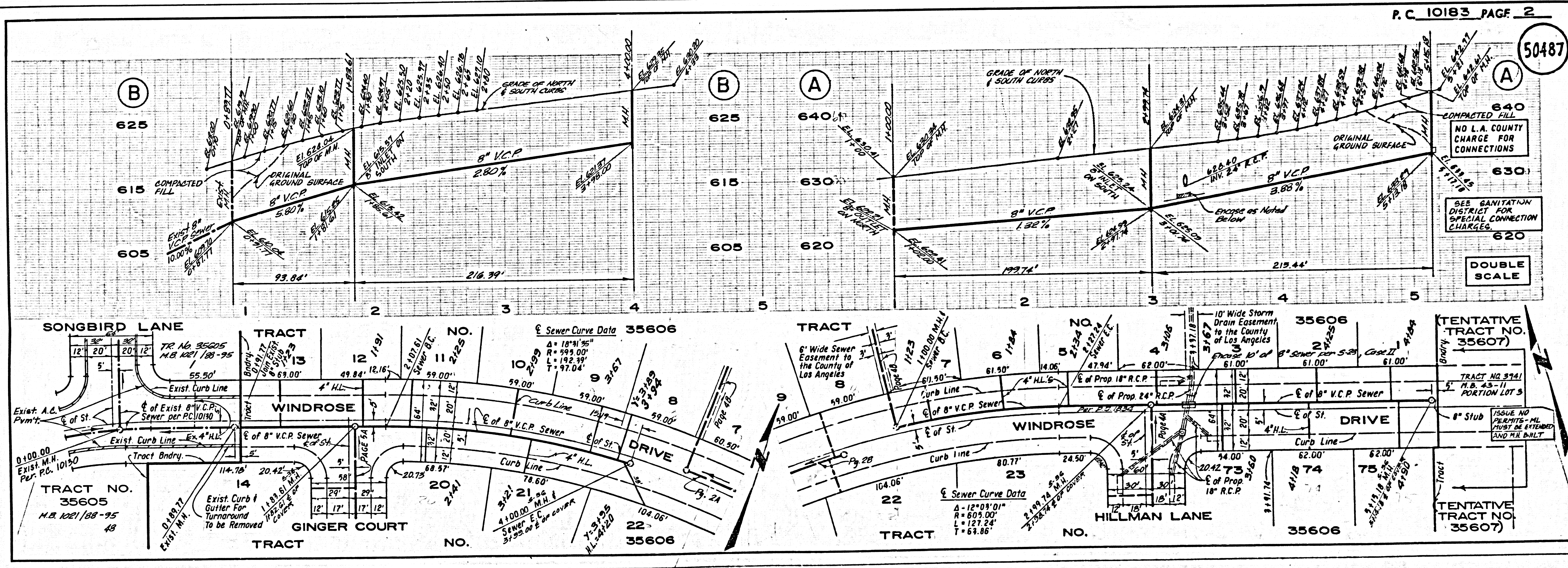
INDEX MAP
P.C. 10183 TRACT NO. 35606
Scale: 1" = 600'

NOTE:
ISSUE NO HOUSE CONNECTION PERMITS
UNTIL P.C. 10150 (PG'S 6 & 7) IS ACCEPTED

NOTE:
ISSUE H.C. PERMITS FOR LOTS 42 & 47
FROM P.C. 10150, PAGE 4A AND FOR LOTS
48 - 49 FROM P.C. 10150, PAGE 5A.

NO CONNECTION FOR THE DISPOSAL OF INDUSTRIAL WASTES
SHALL BE MADE TO SEWERS SERVING AN INDUSTRY OR BUSINESS
UNLESS PERMIT FOR INDUSTRIAL WASTE WATER
DISCHARGE HAS BEEN ISSUED BY THE SANITATION
DISTRICTS FOR SAID CONNECTION.

BEFORE BREAKING INTO OR CONSTRUCTION ON A COUNTY
SANITATION DISTRICT SEWER AND PRIOR TO FINAL
ACCEPTANCE OF THE PROJECT, SANITATION DISTRICT
INSPECTOR SHALL BE NOTIFIED BY PHONE 762-3605,
SO THAT REQUIRED INSPECTION CAN BE MADE.



50487

640
COMPACTED FILL
NO L.A. COUNTY
CHARGE FOR
CONNECTIONS
630
SEE SANITATION
DISTRICT FOR
SPECIAL CONNECTION
CHARGES
620

DOUBLE SCALE

TENTATIVE
TRACT NO.
35607

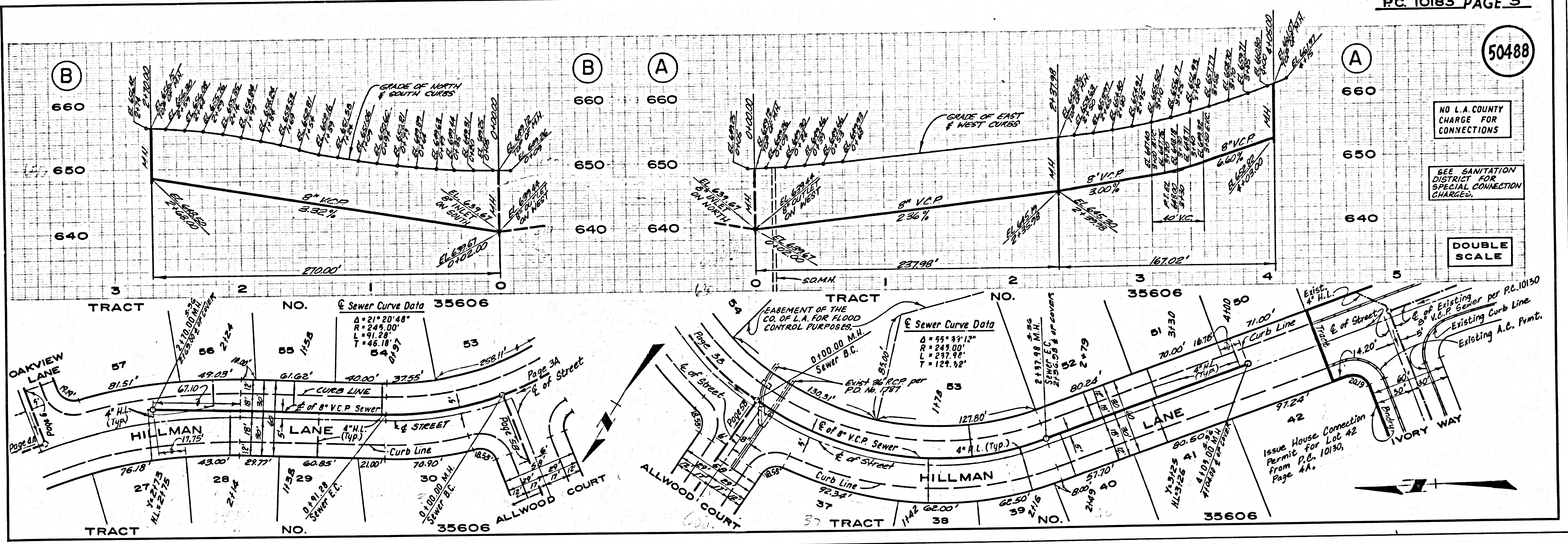
TENTATIVE
TRACT NO.
35607

50486

50487

50487

50488

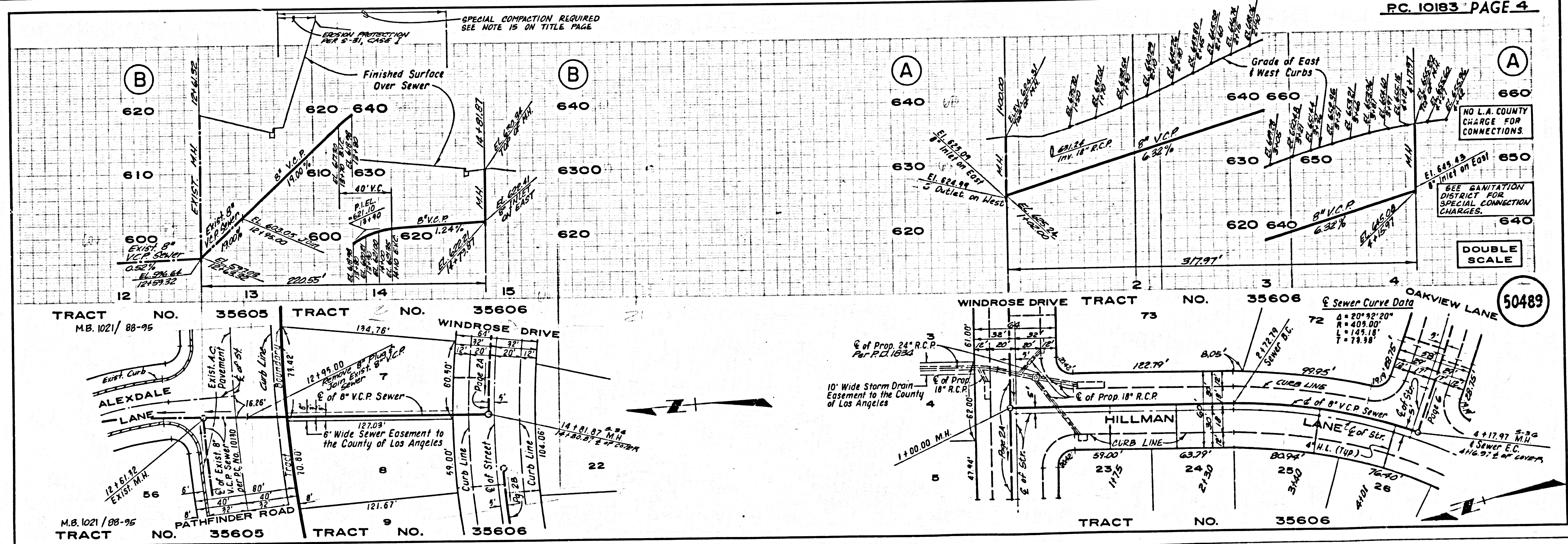


NO L.A. COUNTY CHARGE FOR CONNECTIONS

SEE SANITATION DISTRICT FOR SPECIAL CONNECTION CHARGES.

DOUBLE SCALE

50489



NO L.A. COUNTY CHARGE FOR CONNECTIONS.

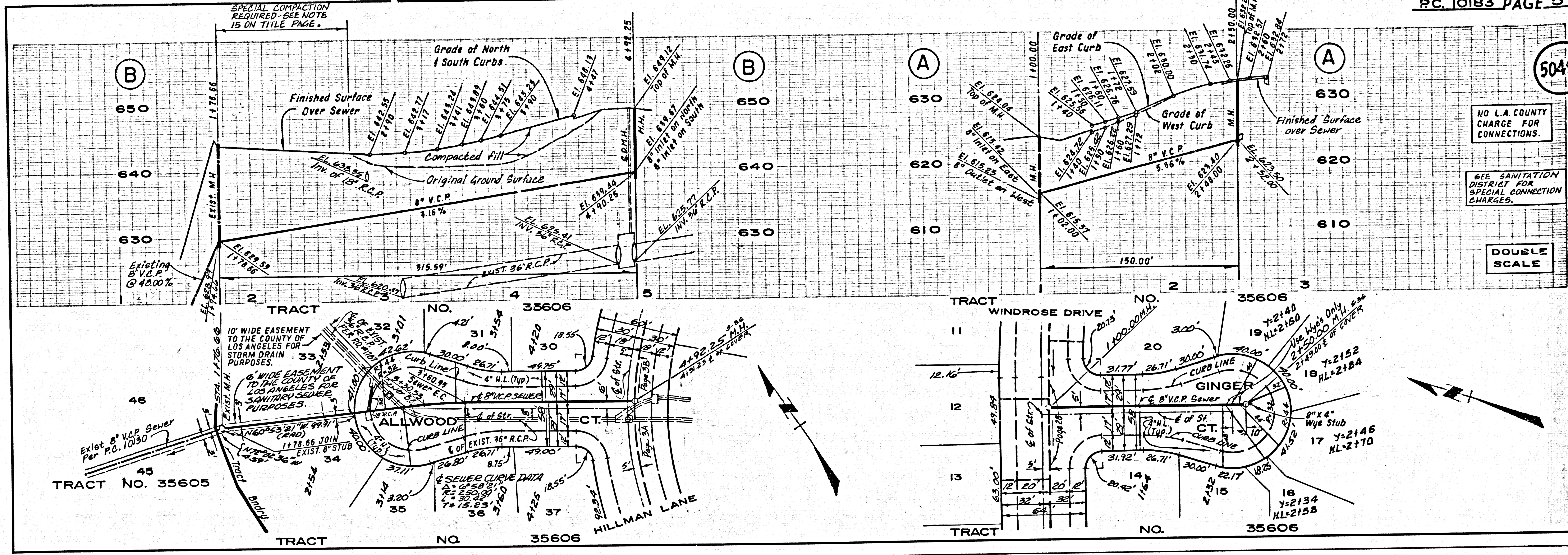
SEE SANITATION DISTRICT FOR SPECIAL CONNECTION CHARGES.

DOUBLE SCALE

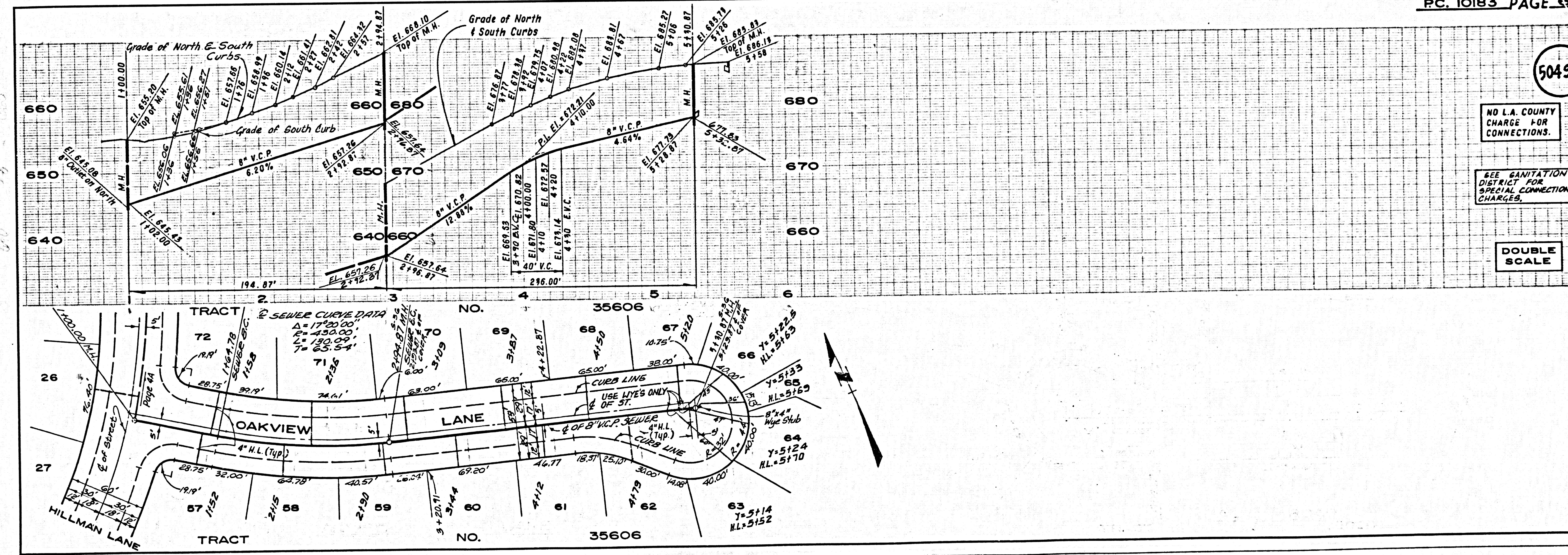
PC. 10183

PC. 10183

50490



50491



PC 10183

00025 ON TRACT