

PRIVATE ENGINEERS NOTICE TO CONTRACTORS

The existence and location of any underground utility pipes or structures shown on these plans are obtained by search of the available records. To the best of our knowledge there are no existing utilities except as shown on these plans. The contractor is required to take due precautionary measures to protect the utility lines shown and any other lines not of record or not shown on these plans.

Registered Engineer R.C.E. 19233

NO CONNECTION FOR THE DISPOSAL OF INDUSTRIAL WASTES SHALL BE MADE TO SEWERS SHOWN ON THESE DRAWINGS UNTIL A PERMIT FOR INDUSTRIAL WASTEWATER DISCHARGE HAS BEEN ISSUED BY THE SANITATION DISTRICTS FOR SAID CONNECTION.

BEFORE BREAKING INTO OR CONSTRUCTION ON A COUNTY SANITATION DISTRICT SEWER AND PRIOR TO FINAL ACCEPTANCE OF THE PROJECT, SANITATION DISTRICT INSPECTOR SHALL BE NOTIFIED BY PHONE - 962-8605, SO THAT REQUIRED INSPECTION CAN BE MADE.

CONSTRUCTION NOTES CONT'D.

- 16. FULL COMPLIANCE WITH PART II OF THE SPECIAL PROVISIONS IS REQUIRED FOR THE INSTALLATION OF A.B.S. COMPOSITE PIPE.
- 17. MANHOLE WALKER STEEL GRATES OR CLAIMS ARE REQUIRED FOR THE CONNECTION OF A.B.S. COMPOSITE PIPE TO MANHOLE STRUCTURES.
- 18. A.B.S. SOLID WALL PIPE MUST BE USED FOR WYE & HOUSE LATERAL CONNECTIONS TO A.B.S. COMPOSITE MAINLINE SEWER PIPE.
- 19. A.B.S. COMPOSITE PIPE SHALL BE BACKED IN CONFORMANCE WITH THE TABLE IN SECTION 8-3.1 OF PART II OF THE SPECIAL PROVISIONS.
- 20. THREE DEGREE DEFLECTION COEFFICIENTS ARE REQUIRED FOR RADII OF CURVATURE LESS THAN 500 FEET UNLESS NOTED OTHERWISE.
- 21. NO CONNECTIONS FOR DISPOSAL OF INDUSTRIAL WASTES ALLOWED IF A.B.S. COMPOSITE PIPE IS USED.
- 22. SEWER LINE CURVATURE SHALL NOT BE ACHIEVED BY PULLING OF JOINTS OR DEFLECTING PIPE ENDS UNLESS USING PLASTIC PIPE INCLUDING A.B.S. COMPOSITE PIPE.

NOTE: ISSUE NO HOUSE CONNECTION PERMITS UNTIL P.C.'S 10153, 10160 & 10164 ARE ACCEPTED.

NOTE: ISSUE HOUSE CONNECTION PERMIT FOR LOT 27 FROM P.C. 10160 PAGE 3B

GENERAL NOTES:

- 1. ELEVATIONS ARE IN FEET ABOVE U.S. & B.S. SEA LEVEL DATUM OF 1988.
- 2. NO REVISIONS SHALL BE MADE IN THESE PLANS WITHOUT THE APPROVAL OF THE COUNTY ENGINEER.
- 3. NO REPRESENTATIVE OF THE COUNTY ENGINEER WILL SURVEY OR LAY OUT ANY PORTION OF THE WORK.
- 4. GRADES TO WHICH THIS IMPROVEMENT IS TO BE CONSTRUCTED ARE SHOWN ON PLANS AND PROFILES. GRADE POINTS FOR TOP OF CURBS, CENTER LINE OF STREETS, OR CENTER LINE OF ALLEYS ARE SHOWN BY CIRCLES ON PROFILES. AT ALL POINTS BETWEEN DESIGNATED POINTS THE GRADE SHALL BE ESTABLISHED SO AS TO CONFORM TO A STRAIGHT LINE DRAWN BETWEEN SAID DESIGNATED POINTS.
- 5. THE PRIVATE ENGINEER SHALL FURNISH THE COUNTY ENGINEER WITH GRADE SHEETS AND STATIONING FOR ALL HOUSE LATERALS AND 1" ON 1" BRANCHES AND SHALL PROVIDE STAKES FOR THEM AT THEIR PROPER LOCATIONS WITH STATIONING PLAINLY MARKED. ALL HOUSE LATERALS SHALL BE CONSTRUCTED IN A STRAIGHT ALIGNMENT AT RIGHT ANGLES FROM THE MAIN LINE SEWER EXCEPT AS SHOWN ON THE PLANS. HOUSE LATERALS FROM CHIMNEYS SHALL NOT HAVE AN ANGLE OF LESS THAN 45° WITH THE MAIN LINE SEWER. ANY CHANGE IN ALIGNMENT SHALL BE REQUESTED IN WRITING BY THE PRIVATE ENGINEER.
- 6. THE PRIVATE ENGINEER SHALL FURNISH THE HOUSE LATERAL DEPTH AT THE PROPERTY LINE BELOW THE TOP OF CURB ELEVATION FOR EACH HOUSE LATERAL ON THE GRADE SHEET.
- 7. BEFORE WORK CAN BE STARTED, THE CONTRACTOR MUST OBTAIN A PERMIT TO EXCAVATE IN COUNTY STREETS FROM THE L.A. COUNTY ROAD DEPT., DISTRICT OFFICE NO. 1, AND PAY A FEE TO THE COUNTY ENGINEER, 800 S. VERMONT AVENUE, LOS ANGELES, CALIF. TO COVER THE COST OF CONSTRUCTION INSPECTION AND RECORD PLANS.
- 8. IF WORK IS TO BE DONE IN A STATE HIGHWAY, A PERMIT MUST BE OBTAINED FROM THE STATE OF CALIFORNIA, DIVISION OF HIGHWAYS, 180 SOUTH SPRING STREET, LOS ANGELES, CALIFORNIA.
- 9. APPROVAL OF THIS PLAN BY THE COUNTY OF LOS ANGELES DOES NOT CONSTITUTE A REPRESENTATION AS TO THE ACCURACY OF THE LOCATION OF OR THE EXISTENCE OR NON-EXISTENCE OF ANY UNDERGROUND UTILITY PIPE, OR STRUCTURE WITHIN THE LIMITS OF THIS PROJECT. THIS NOTE APPLIES TO ALL PAGES.
- 10. REFER TO SECTION 7.16.1 OF THE STANDARD SPECIFICATIONS, REGARDING SAFETY ORDERS.
- 11. PRIOR TO THE ISSUANCE OF THE REQUIRED SEWER CONSTRUCTION PERMIT, THE CONTRACTOR SHALL OBTAIN AND FILE WITH THE COUNTY ENGINEER COPIES OF A PERMIT TO EXCAVATE IN COUNTY STREETS FROM THE LOS ANGELES COUNTY ROAD DEPARTMENT, A PERMIT FOR EXCAVATIONS AND TRENCHES FROM THE STATE OF CALIFORNIA, DIVISION OF INDUSTRIAL SAFETY AND A CERTIFICATE OF WORKERS COMPENSATION INSURANCE WITH THE DEPARTMENT OF COUNTY ENGINEER, 800 SOUTH VERMONT, RM. 100, LOS ANGELES, CALIFORNIA 90081, NAMED AS THE CERTIFICATE HOLDER TO BE NOTIFIED 30 DAYS PRIOR TO CANCELLATION OF POLICY.

CONSTRUCTION NOTES:

- 1. WORK SHALL BE CONSTRUCTED ACCORDING TO THE STANDARD SPECIFICATIONS FOR PUBLIC WORKS CONSTRUCTION (1982 EDITION WITH 1981 SUPPLEMENTS) AND COUNTY ENGINEER SPECIAL PROVISIONS FOR THE CONSTRUCTION OF SANITARY SEWERS DATED 1/25/78.
- 2. THE CONTRACTOR SHALL NOTIFY THE ENVIRONMENTAL DEVELOPMENT DIVISION BY TELEPHONE, 298-2181, AT LEAST TWENTY-FOUR HOURS BEFORE STARTING ANY WORK UNDER THIS CONTRACT.
- 3. HOUSE LATERALS TO BE CONSTRUCTED WITH INVERTS AT PROPERTY LINE 8 FEET BELOW CURB GRADE EXCEPT AS NOTED.
- 4. WYE OR TEE BRANCHES MAY BE USED FOR CONNECTIONS TO MAINLINE SEWERS EXCEPT AS NOTED.
- 5. ALL WYE BRANCHES SHALL BE USED APPROXIMATELY TO MANHOLE SEWERS OF A 6" OR 8" DIAMETER.
- 6. ALL WYE BRANCHES SHALL BE USED APPROXIMATELY TO MANHOLE SEWERS OF A 6" OR 8" DIAMETER.
- 7. PROVIDE STAKES ON THE PROPERTY LINE OR PROPERTY LINES PRODUCED AT RIGHT ANGLES TO THE SEWER LINE AT THE CENTER LINE OF EACH MANHOLE.
- 8. MANHOLE TOPS IN UNIMPROVED AREAS TO BE SIX INCHES ABOVE FINISHED GRADE.
- 9. WYTHED CLAY PIPE JOINTS SHALL BE TYPE "D" OR "E" PER STANDARD SPECIFICATIONS SECTION 28B.
- 10. IF A POWER POLE IS WITHIN THREE FEET OF THE SEWER, THE SEWER SHALL BE ENCASED, PER 8-2.2 CASE II, TWO FEET ON EACH SIDE FROM THE POINT OF INTERFERENCE.
- 11. IF DURING THE COURSE OF CONSTRUCTION IT IS DETERMINED THAT THERE IS LESS THAN FOUR FEET OF COVER OVER THE TOP OF A MAIN LINE OR HOUSE LATERAL SEWER WHICH IS NOT INDICATED ON THE PLANS, THE PIPE SHALL BE ENCASED PER 8-2.2 CASE II UNLESS OTHERWISE APPROVED BY THE COUNTY ENGINEER.
- 12. ALL JOINTS BETWEEN CAST IRON PIPE AND WYTHED CLAY PIPE SHALL BE MADE WITH A RUBBER SLEEVE JOINT, TYPE "D" OR "E".
- 13. ALL WYTHED CLAY PIPE SHALL BE USED APPROXIMATELY TO MANHOLE SEWERS OF A 6" OR 8" DIAMETER.
- 14. SEWERS TO BE TESTED FOR LEAKAGE PER SECTION 28B-14 OF THE STANDARD SPECIFICATIONS AND SPECIAL PROVISIONS.
- 15. RESURFACE ALL TRENCHES WITHIN PAVED AREAS TO MEET L.A. COUNTY ROAD DEPT. ON CALIFORNIA STATE HIGHWAY REQUIREMENTS IN ACCORDANCE WITH PERMITS.
- 16. FULL COMPLIANCE WITH SECTION 28B-13 OF THE SPECIAL PROVISIONS WILL BE REQUIRED FOR BACKFILL IN STREETS. CERTIFICATION OF BACKFILL COMPACTION AND SAID EQUIVALENTS BY A QUALIFIED, REGISTERED TESTING LABORATORY SHALL BE PROVIDED BY THE PERMITTEE PRIOR TO THE ISSUANCE OF A CERTIFICATE OF PARTIAL ACCEPTANCE.
- 17. SPECIAL BACKFILL IN EASEMENT CONSTRUCTION: (A) BACKFILL, FINISH AND REPLACE OTHER EARTH SO AS TO ACHIEVE THE NATURAL OR FINISHED GRADES AND SLOPES SHOWN ON THE DRAINAGE PLAN APPROVED FOR THIS DEVELOPMENT BY THE BUILDING AND SAFETY DIVISION; (B) BACKFILL AND EARTH REPLACEMENT SHALL BE COMPACTED TO A MINIMUM OF 90% OF MAXIMUM DENSITY PER A.S.T.M. STD. METHOD OF TEST D955 BY AN APPROVED, ACCEPTABLE CERTIFICATION OF SUCH COMPACTION SHALL BE SUBMITTED TO THE ENVIRONMENTAL DEVELOPMENT DIVISION.

DOUBLE SCALE

PROFILE, ALIGNMENT AND GRADE OF PAGE 1

SANITARY SEWERS

TO BE CONSTRUCTED IN

TRACT NO. 42582
PRIVATE CONTRACT NO. 10184

W.S. 39-03
3 SHEETS, 6 PAGES

SCALE: VERT. 1"=6' HORIZ. 1"=40' AUGUST, 1983

PREPARED IN THE OFFICES OF

BY: *[Signature]*
REG. C.E. NO. 19233
JOHN M. SARRACINO

THE FOLLOWING LATEST REVISED STANDARD PLANS ON FILE IN THE OFFICE OF THE COUNTY ENGINEER SHALL APPLY IN THE CONSTRUCTION OF THIS PROJECT:

| | |
|---|-------|
| MINIMUM PUBLIC SAFETY REQUIREMENTS | 8-1 |
| BACK MANHOLE | 8-2 |
| STANDARD MANHOLE STEP | 8-3 |
| BRIDGING FOR SEWER PIPE | 8-4 |
| CRADLING AND ENCASMENT | 8-5 |
| WYE OR TEE SUPPORT | 8-6 |
| ALLOWABLE TRENCH WIDTHS | 8-7 |
| SECCING MANHOLE FRAME AND COVER | 8-8 |
| NON-REINFORCED PRECAST CONCRETE MANHOLE | 8-9 |
| ENCASING REQUIREMENTS FOR PLASTIC PIPE | 8-2/A |

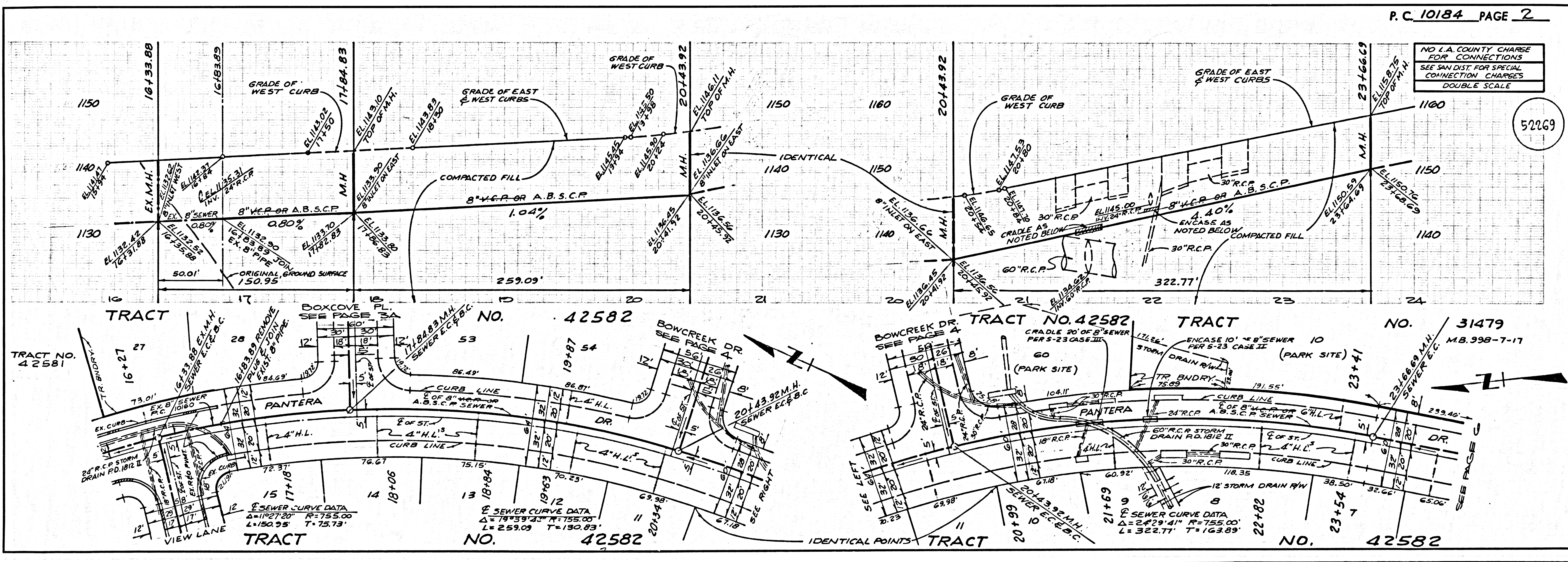
COUNTY OF LOS ANGELES, CALIFORNIA

STEPHEN J. KOONCE, COUNTY ENGINEER WALTER E. GARRISON, CHIEF ENGINEER

APPROVED *[Signature]* 10/18/83
SAN DIMAS REGIONAL ENGINEER DATE

CHECKED *[Signature]* 10/18/83
NO. C.E. NO. 16997 DATE

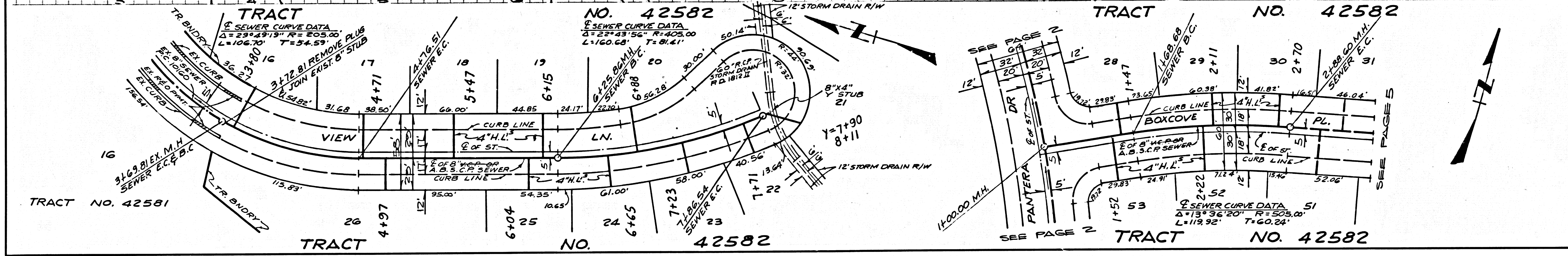
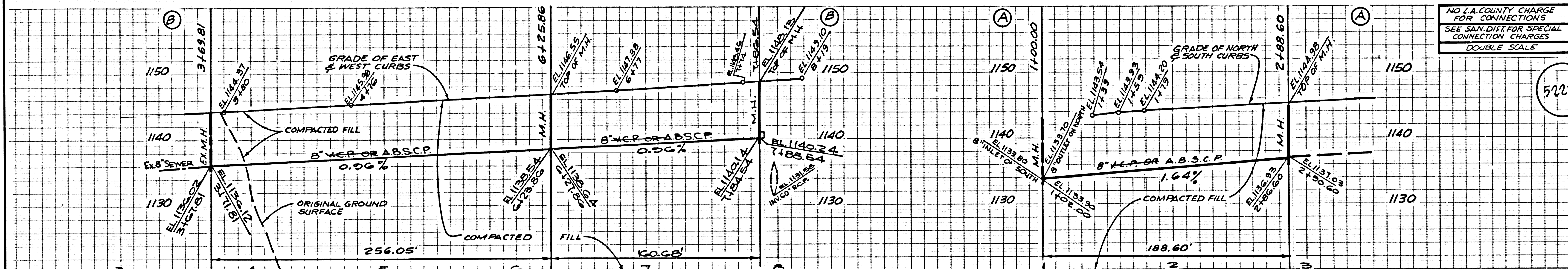
SAN DIMAS BLDG. DIST. 10.00



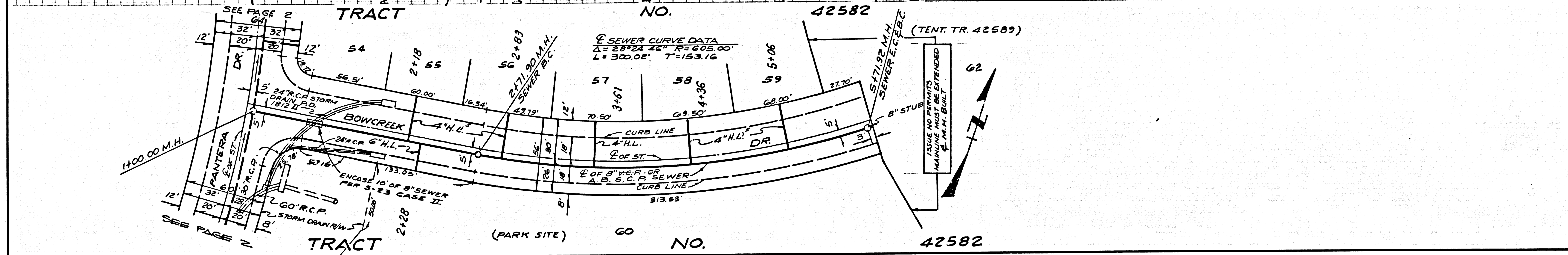
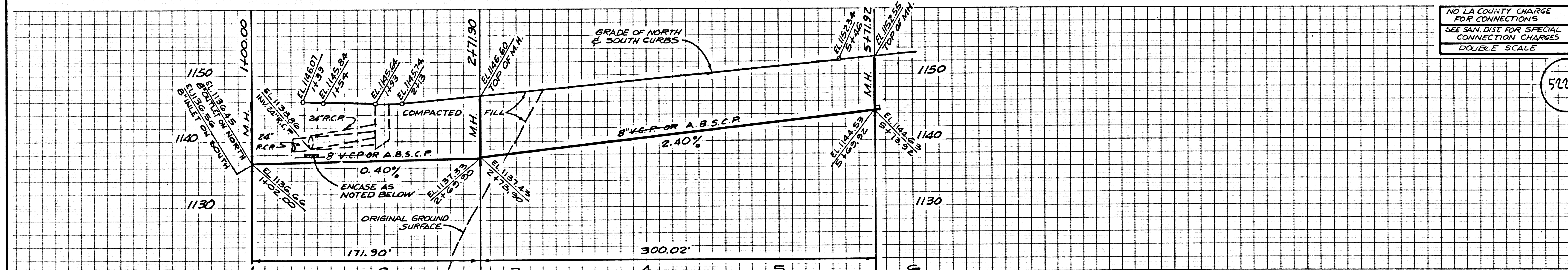
P.C. 10184 PAGE 2

NO L.A. COUNTY CHARGE FOR CONNECTIONS SEE SAN DIST. FOR SPECIAL CONNECTION CHARGES DOUBLE SCALE

NO LA COUNTY CHARGE FOR CONNECTIONS
SEE SAN DIST FOR SPECIAL CONNECTION CHARGES
DOUBLE SCALE

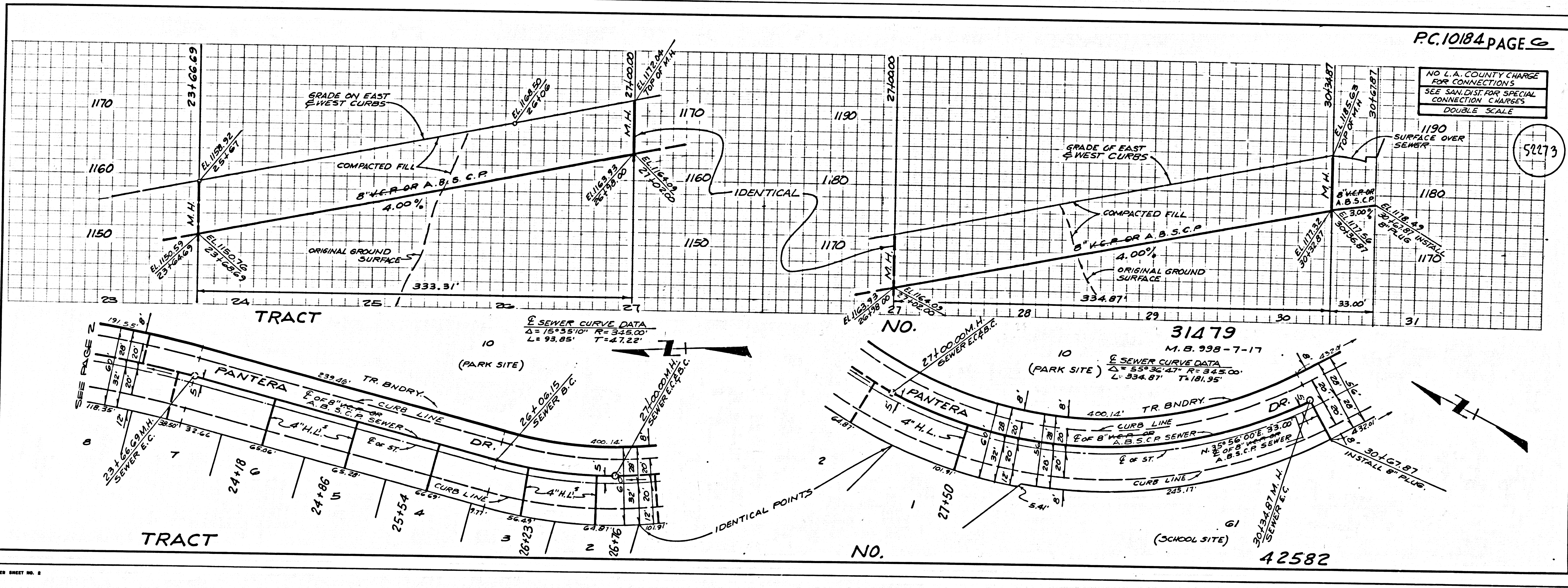
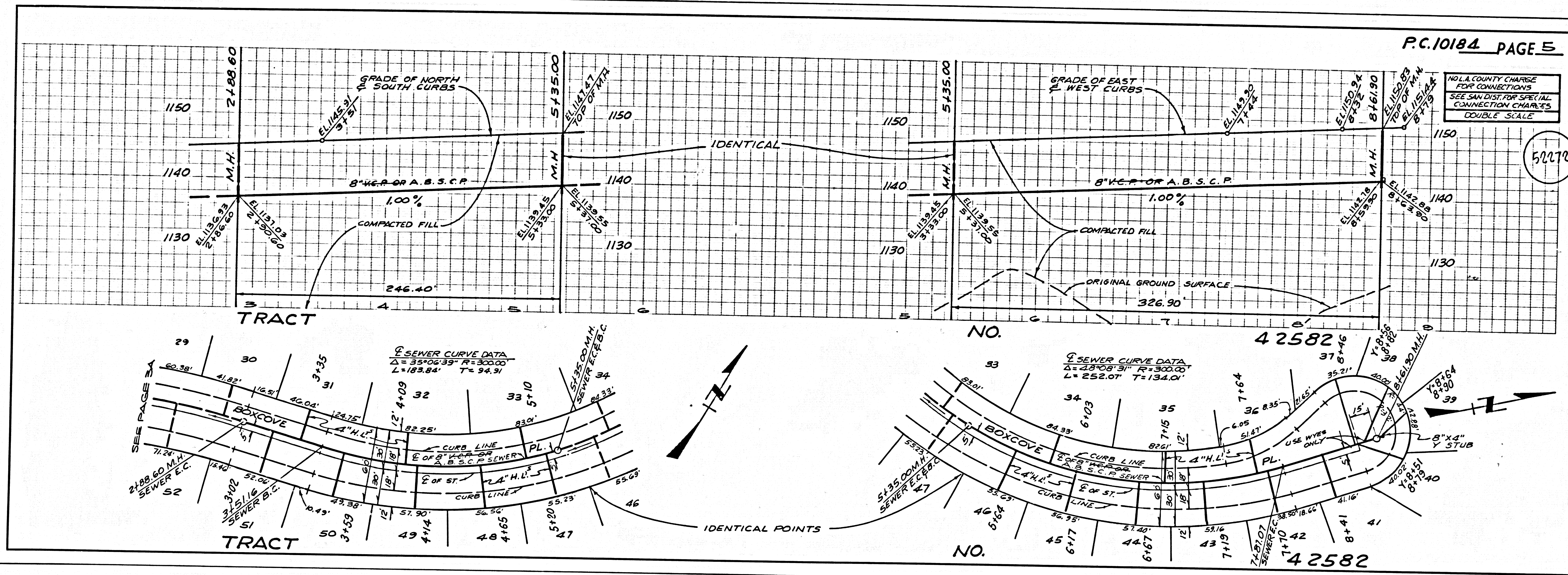


NO LA COUNTY CHARGE FOR CONNECTIONS
SEE SAN DIST FOR SPECIAL CONNECTION CHARGES
DOUBLE SCALE



51270
48101.09

51271
S8854 911 TRACT



OSHALO L.A. COUNTY SEWER SHEET NO. 8

③

48101.39

58254

OM

TRACT

52272

52273

P.C. 10184 PAGE 5

P.C. 10184 PAGE 6

NO L.A. COUNTY CHARGE FOR CONNECTIONS
 SEE SAN DIST. FOR SPECIAL CONNECTION CHARGES
 DOUBLE SCALE

NO L.A. COUNTY CHARGE FOR CONNECTIONS
 SEE SAN DIST. FOR SPECIAL CONNECTION CHARGES
 DOUBLE SCALE