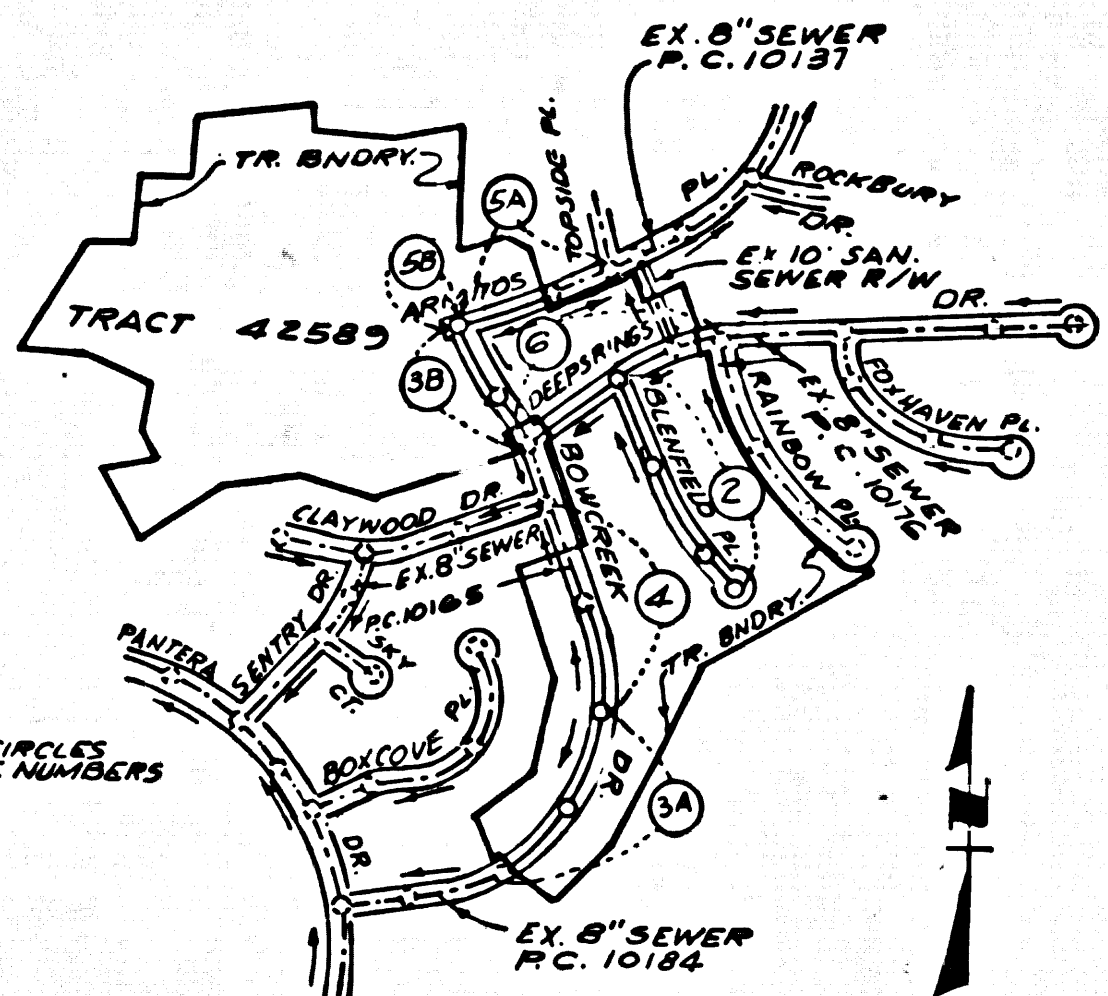


B.M. CG 8911 ELEV. 895.556  
 L & T INE END CB 44 FT S +  
 36 FT W C/L INT GRAND AVE  
 + DIAMOND BAR BLVD (M&D BM C-12)  
 OTTERBEIN QUAD. 19 75



INDEX MAP  
 TRACT NO. 42589  
 P.C. 10185  
 SCALE: 1"=600'

**PRIVATE ENGINEERS NOTICE TO CONTRACTORS**

The existence and location of any underground utility pipes or structures shown on these plans are obtained by search of the available records. To the best of our knowledge there are no existing utilities except as shown on these plans. The contractor is required to take due precautionary measures to protect the utility lines shown and any other lines not of record or not shown on these plans.

Registered Engineer R.C.E. 17233

**NOTE:** ISSUE NO HOUSE CONNECTION PERMITS UNTIL P.C.'S 10159, 10160, 10164, 10165, 10176 & 10184 ARE ACCEPTED.

NO CONNECTION FOR THE DISPOSAL OF INDUSTRIAL WASTES SHALL BE MADE TO SEWERS SHOWN ON THESE DRAWINGS UNTIL A PERMIT FOR INDUSTRIAL WASTEWATER DISCHARGE HAS BEEN ISSUED BY THE SANITATION DISTRICTS FOR SAID CONNECTION.

BEFORE BREAKING INTO OR CONSTRUCTION ON A COUNTY SANITATION DISTRICT SEWER AND PRIOR TO FINAL ACCEPTANCE OF THE PROJECT, SANITATION DISTRICT INSPECTOR SHALL BE NOTIFIED BY PHONE - 962-8605, SO THAT REQUIRED INSPECTION CAN BE MADE.

**CONSTRUCTION NOTES CONT'D.**

16. FULL COMPLIANCE WITH PART 25 OF THE SPECIAL PROVISIONS IS REQUIRED FOR THE INSTALLATION OF A.B.S. COMPOSITE PIPE.
17. MANHOLE Riser STOP BANDES & CLAMPS ARE REQUIRED FOR THE CONNECTION OF A.B.S. COMPOSITE PIPE TO MANHOLE STRUCTURES.
18. A.B.S. COMPOSITE PIPE SHALL BE USED FOR ALL HOUSE LATERAL CONNECTIONS TO A.B.S. COMPOSITE MANHOLE SENIOR PIPE.
19. A.B.S. COMPOSITE PIPE SHALL BE BEDDED IN CONFORMANCE WITH THE TABLE IN SECTION 8-21 OF PART 25 OF THE SPECIAL PROVISIONS.
20. THREE DEGREE DEFLECTION COUPLERS ARE REQUIRED FOR RADIIUS OF CURVATURE LESS THAN 300 FEET WHEN USING 8" A.B.S. C.P.
21. NO CONNECTIONS FOR DISPOSAL OF INDUSTRIAL WASTE IS ALLOWED IF A.B.S. COMPOSITE PIPE IS USED.
22. SEWER LINE CURVATURE SHALL NOT BE ACHIEVED BY PULLING OF JOINTS OF DEVELOPE PIPE ENDS WHEN USING PLASTIC PIPE INCLUDING A.B.S. COMPOSITE PIPE.

**NOTE:** ISSUE HOUSE CONNECTION PERMITS FOR LOTS 12, 13, 23 THROUGH 31 FROM P.C. 10185 PAGE 4A, 32 & 33 FROM P.C. 10165 PAGE 4B, 54 THROUGH 62 FROM P.C. 10176 PAGE 6A, 63 FROM P.C. 10176 PAGE 6A, 75, 76 & 77 FROM P.C. 10176 PAGE 6A.

**GENERAL NOTES:**

1. ELEVATIONS ARE IN FEET ABOVE U.S.C. & G.S. SEA LEVEL DATUM OF 1985.
2. NO REVISIONS SHALL BE MADE IN THESE PLANS WITHOUT THE APPROVAL OF THE COUNTY ENGINEER.
3. NO REPRESENTATIVE OF THE COUNTY ENGINEER WILL SURVEY OR LAY OUT ANY PORTION OF THE WORK.
4. GRADES TO WHICH THIS IMPROVEMENT IS TO BE CONSTRUCTED ARE SHOWN ON PLANS AND PROFILES. GRADE POINTS FOR TOP OF CURBS, CENTER LINE OF STREETS, OR CENTER LINE OF ALLEYS ARE SHOWN BY CIRCLES ON PROFILES. AT ALL POINTS BETWEEN DESIGNATED POINTS THE GRADE SHALL BE ESTABLISHED SO AS TO CONFORM TO A STRAIGHT LINE DRAWN BETWEEN SAID DESIGNATED POINTS.
5. THE PRIVATE ENGINEER SHALL FURNISH THE COUNTY ENGINEER WITH BRACE SHEETS AND STATIONING FOR ALL HOUSE LATERALS AND "Y" OR "T" BRANCHES AND SHALL PROVIDE STAGES FOR THEM AT THEIR PROPER LOCATIONS WITH STATIONING PLAINLY MARKED. ALL HOUSE LATERALS SHALL BE CONSTRUCTED IN A STRAIGHT ALIGNMENT AT RIGHT ANGLES FROM THE MAIN LINE SEWER EXCEPT AS SHOWN ON THE PLANS. HOUSE LATERALS FROM CHIMNEYS SHALL NOT HAVE AN ANGLE OF LESS THAN 45° WITH THE MAIN LINE SEWER. ANY CHANGE IN ALIGNMENT SHALL BE REQUESTED IN WRITING BY THE PRIVATE ENGINEER.
6. THE PRIVATE ENGINEER SHALL FURNISH THE HOUSE LATERAL DEPTH AT THE PROPERTY LINE BELOW THE TOP OF CURB ELEVATION FOR EACH HOUSE LATERAL ON THE GRADE SHEET.
7. BEFORE WORK CAN BE STARTED, THE CONTRACTOR MUST OBTAIN A PERMIT TO EXCAVATE IN COUNTY STREETS FROM THE L.A. COUNTY ROAD DEPT., DISTRICT OFFICE NO. 1 AND PAY A FEE TO THE COUNTY ENGINEER, 500 S. VERMONT AVENUE, LOS ANGELES, CA 90005, TO COVER THE COST OF CONSTRUCTION INSPECTION AND RECORD PLANS.
8. IF WORK IS TO BE DONE IN A STATE HIGHWAY, A PERMIT MUST BE OBTAINED FROM THE STATE OF CALIFORNIA, DIVISION OF HIGHWAYS, 120 SOUTH SPRING STREET, LOS ANGELES, CALIFORNIA.
9. APPROVAL OF THIS PLAN BY THE COUNTY OF LOS ANGELES DOES NOT CONSTITUTE A REPRESENTATION AS TO THE ACCURACY OF THE LOCATION OR OF THE EXISTENCE OR NON-EXISTENCE OF ANY UNDERGROUND UTILITY PIPE OR STRUCTURE WITHIN THE LIMITS OF THIS PROJECT. THIS NOTE APPLIES TO ALL PAGES.
10. REFER TO SECTION 7.10.4.1 OF THE STANDARD SPECIFICATIONS REGARDING SAFETY ORDERS.
11. PRIOR TO THE ISSUANCE OF THE REQUIRED SEWER CONSTRUCTION PERMIT, THE CONTRACTOR SHALL OBTAIN AND FILE WITH THE COUNTY ENGINEER COPIES OF A PERMIT TO EXCAVATE IN COUNTY STREETS FROM THE LOS ANGELES COUNTY ROAD DEPARTMENT, A PERMIT FOR EXCAVATIONS AND TRENCHES FROM THE STATE OF CALIFORNIA, DIVISION OF INDUSTRIAL SAFETY AND CERTIFICATE OF WORKERS COMPENSATION INSURANCE WITH THE DEPARTMENT OF COUNTY ENGINEER, 500 SOUTH VERMONT, RM. 402, LOS ANGELES, CALIFORNIA 90005, NAMED AS THE CERTIFICATE HOLDER. HE BE NOTIFIED 30 DAYS PRIOR TO CANCELLATION OF POLICY.

**CONSTRUCTION NOTES:**

1. WORK SHALL BE CONSTRUCTED ACCORDING TO THE STANDARD SPECIFICATIONS FOR PUBLIC WORKS CONSTRUCTION (1982 EDITION WITH REVISIONS) AND COUNTY ENGINEER SPECIAL PROVISIONS FOR THE CONSTRUCTION OF SANITARY SEWERS DATED 5/8/77, 2/1/79, AND SHALL BE PROSECUTED ONLY IN THE PRESENCE OF THE COUNTY ENGINEER.
2. THE CONTRACTOR SHALL NOTIFY THE ENVIRONMENTAL DEVELOPMENT DIVISION BY TELEPHONE 798-2118, AT LEAST TWENTY-FOUR HOURS BEFORE STARTING ANY WORK UNDER THE CONTRACT.
3. HOUSE LATERALS TO BE CONSTRUCTED WITH INVERTS AT PROPERTY LINE 8 FEET BELOW CURB GRADE EXCEPT AS NOTED.
4. ALL TRENCHES SHALL BE 18" DEEP FOR CONNECTIONS TO MAIN LINE SEWERS PER SECTION 8-21 OF PART 25 OF THE SPECIAL PROVISIONS.
5. ALL STRUCTURE SHALL BE CONSTRUCTED PER SECTION 8-21 OF THE STANDARD SPECIFICATIONS EXCEPT AS NOTED.
6. PROVIDE STAGES ON THE PROPERTY LINE OR PROPERTY LINES PRODUCED AT RIGHT ANGLES TO THE SEWER LINE AT THE CENTER LINE OF EACH MANHOLE.
7. MANHOLE TOPS IN UNIMPROVED RIGHTS OF WAY TO BE SIX INCHES ABOVE FINISHED GRADE.
8. WITHEDED CLAY PIPE JOINTS SHALL BE FIVE (5) FEET TO (6) FEET STANDARD SPECIFICATIONS SECTION 200.2.2.
9. IF A POWER POLE IS WITHIN THREE FEET OF THE SEWER, THE SEWER SHALL BE ENCASED PER 8-23 CASE I UNLESS OTHERWISE APPROVED BY THE COUNTY ENGINEER.
10. IF DURING THE COURSE OF CONSTRUCTION IT IS DETERMINED THAT THERE IS LESS THAN FOUR FEET OF COVER OVER THE TOP OF A MAIN LINE OR HOUSE LATERAL SEWER WHICH IS NOT INDICATED ON THE PLANS, THE PIPE SHALL BE ENCASED PER 8-23 CASE I UNLESS OTHERWISE APPROVED BY THE COUNTY ENGINEER.
11. ALL JOINTS BETWEEN CAST IRON PIPE AND WITHEDED CLAY PIPE SHALL BE MADE WITH A RUBBER SLEEVE JOINT, TYPE "C" OR "D", WITH BUILDING UP IF NECESSARY PER STANDARD SPECIFICATIONS SECTION 200.2.
12. ALL JOINTS BETWEEN CAST IRON PIPE AND A.B.S.C.P. SHALL BE MADE WITH APPROVED FITTINGS.
13. ALL JOINTS BETWEEN WITHEDED CLAY PIPE AND A.B.S.C.P. SHALL BE MADE WITH APPROVED FITTINGS.
14. ALL JOINTS BETWEEN WITHEDED CLAY PIPE AND A.B.S.C.P. SHALL BE MADE WITH APPROVED FITTINGS.
15. RESURFACE ALL TRENCHES WITHIN PAVED AREAS TO MEET L.A. COUNTY ROAD DEPT. OR CALIFORNIA STATE HIGHWAY REQUIREMENTS IN ACCORDANCE WITH PERMITS.
16. FULL COMPLIANCE WITH SECTION 80-23 OF THE SPECIAL PROVISIONS WILL BE REQUIRED FOR BACKFILL IN STREETS. CERTIFICATION OF BACKFILL COMPACTION AND SAND EQUIVALENTS BY A QUALIFIED, REGISTERED TESTING LABORATORY SHALL BE PROVIDED BY THE PERMITTEE PRIOR TO THE ISSUANCE OF A CERTIFICATE OF PARTIAL ACCEPTANCE.
17. SPECIAL BACKFILL IN EXISTENT CONSTRUCTION: (A) BACKFILL TRENCHES AND REPLACE OTHER EARTH SO AS TO ACHIEVE THE NATURAL OR FINISHED GRADES AND SLOPES SHOWN ON THE GRADING PLAN APPROVED FOR THIS DEVELOPMENT BY THE BUILDING AND SAFETY DIVISION. (B) ALL BACKFILL AND EARTH REPLACEMENT SHALL BE COMPACTED TO A MINIMUM OF 90% OF MAXIMUM DENSITY PER A.S.T.M. METHOD OF TEST D9597 AS MODIFIED. ACCEPTABLE CERTIFICATION OF SUCH COMPACTION SHALL BE SUBMITTED TO THE ENVIRONMENTAL DEVELOPMENT DIVISION.

**DOUBLE SCALE**

PROFILE, ALIGNMENT AND GRADE OF  
**SANITARY SEWERS**

TO BE CONSTRUCTED IN

**TRACT No 42589**  
 PRIVATE CONTRACT NO. 10185

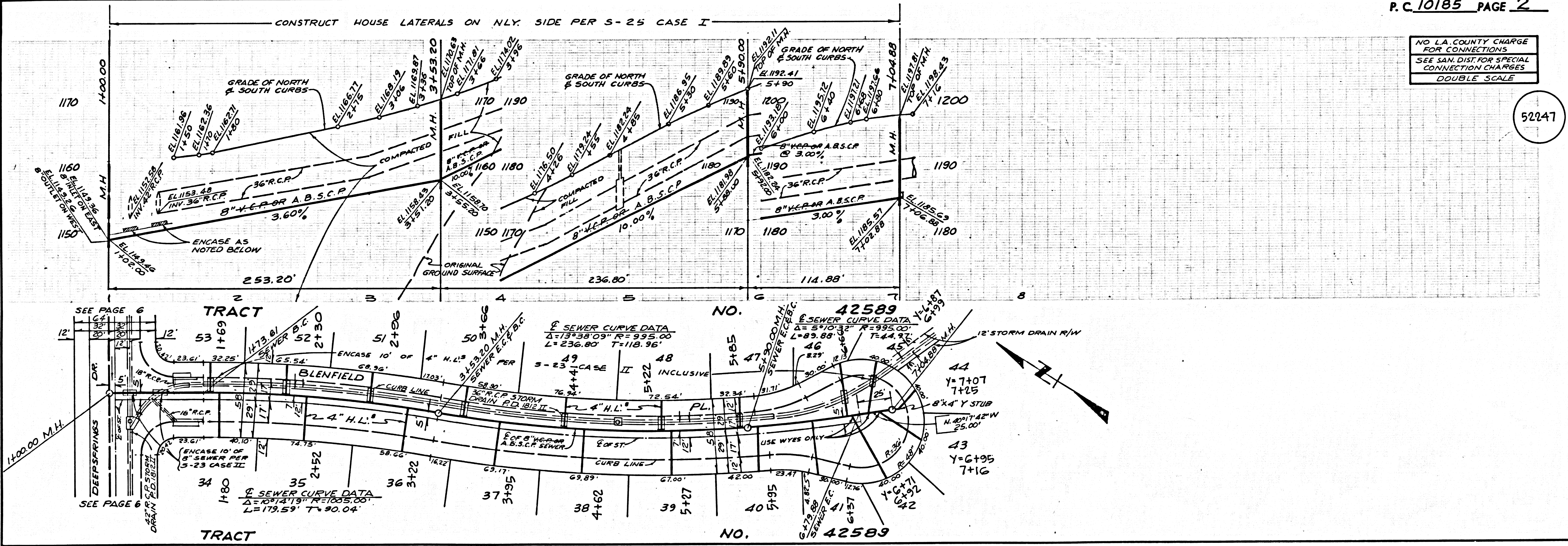
W.S. 39-02  
 3 SHEETS, 6 PAGES  
 SCALE: VERT. 1"=4'  
 HORIZ. 1"=40'  
 AUGUST, 1983  
 PREPARED IN THE OFFICES OF  
 LIND & HILLERD INC.  
 6005 S. HUNTINGTON DRIVE  
 SAN MARINO, CA 91766  
 REG. C.E. No. 17233  
 JOHN N. SARRACINO

THE FOLLOWING LATEST REVISED STANDARD PLANS ON FILE IN THE OFFICE OF THE COUNTY ENGINEER SHALL APPLY IN THE CONSTRUCTION OF THIS PROJECT:

MINIMUM PUBLIC SAFETY ENCLOSURES	8-1
BRICK MANHOLE	8-2
STANDARD MANHOLE RISE	8-3
BEDDING FOR SEWER PIPE	8-4
CRADLING AND ENCASING	8-5
WYE ON THE SUPPORT	8-6
ALLOYABLE TRENCH WITHE	8-7
LOCKING MANHOLE FRAME AND COVER	8-8
NON-REINFORCED PRECAST CONCRETE MANHOLE	8-9
BEDDING REQUIREMENTS FOR PLASTIC PIPE	8-21A
SPECIAL HOUSE LATERALS	8-25

COUNTY OF LOS ANGELES, CALIFORNIA  
 STEPHEN J. KOONCE, COUNTY ENGINEER  
 APPROVED: *John H. Miller* 10/18/83  
 SAN DIMAS REGIONAL ENGINEER  
 CHECKED: *John H. Miller* 10/18/83  
 DATE: 10/18/83  
 MR. CE NO. 16887  
 SAN DIMAS BLDG. DIST. 10-00

**P.C. 10185 PAGE 2**



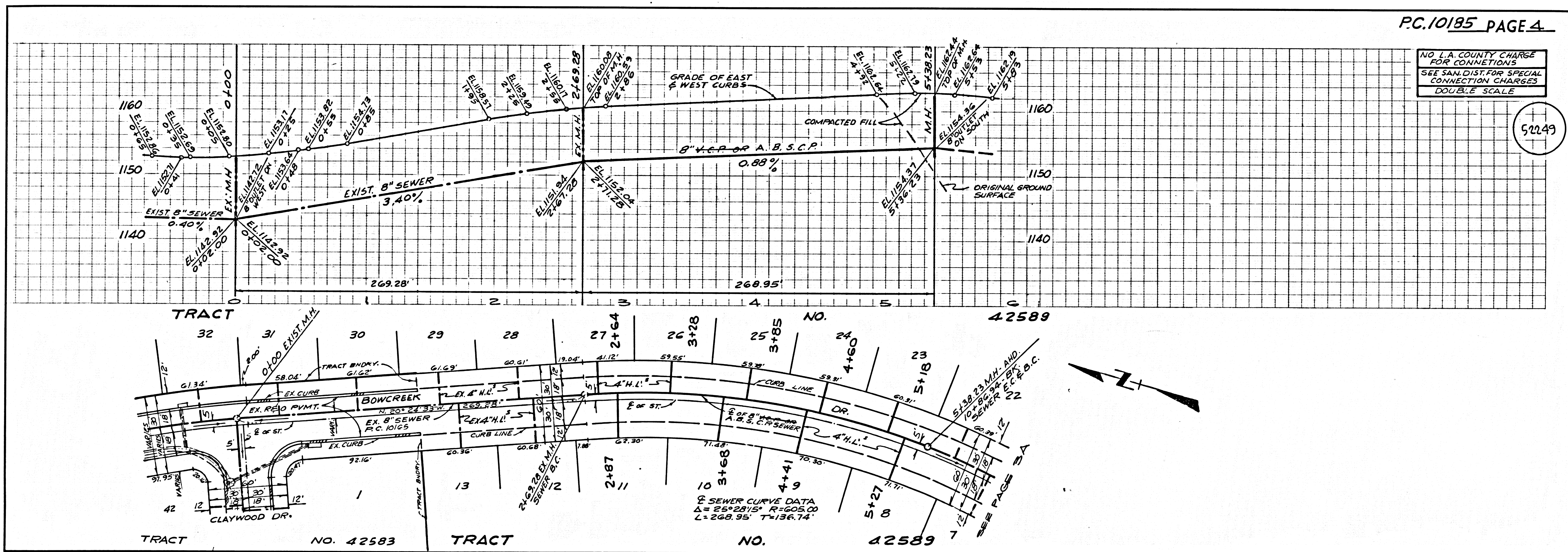
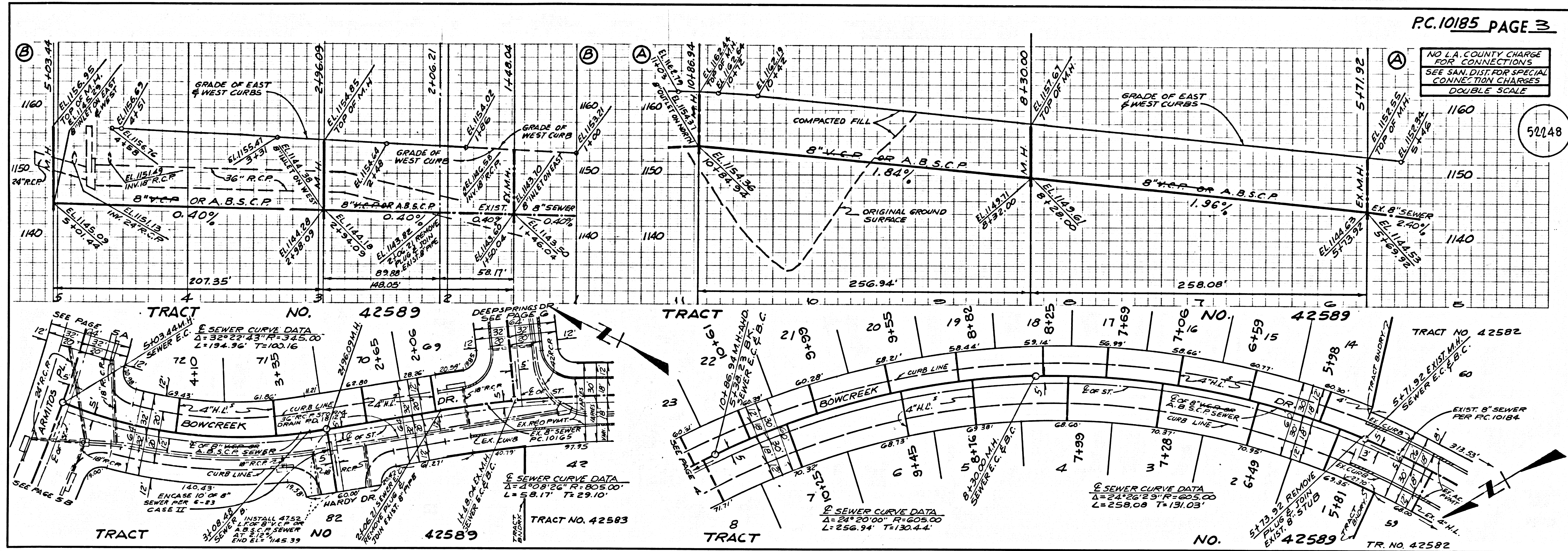
1

28101 29

45288

0M

TRACT



5

BC 10182

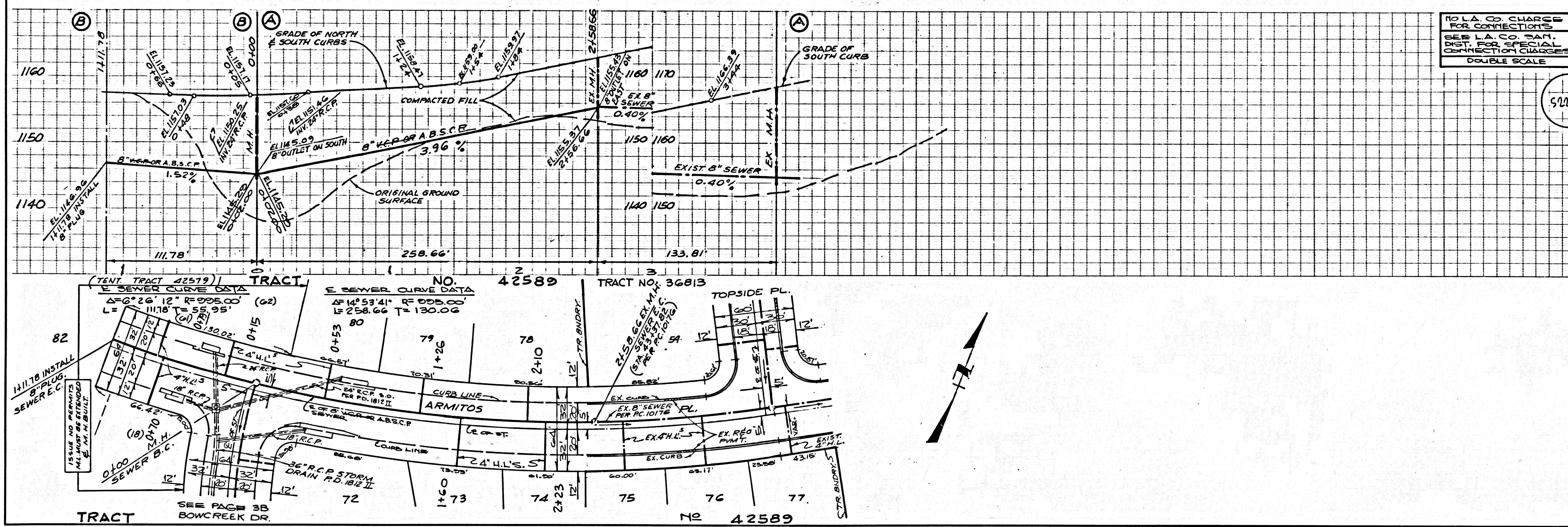
42584

OM

TRACT

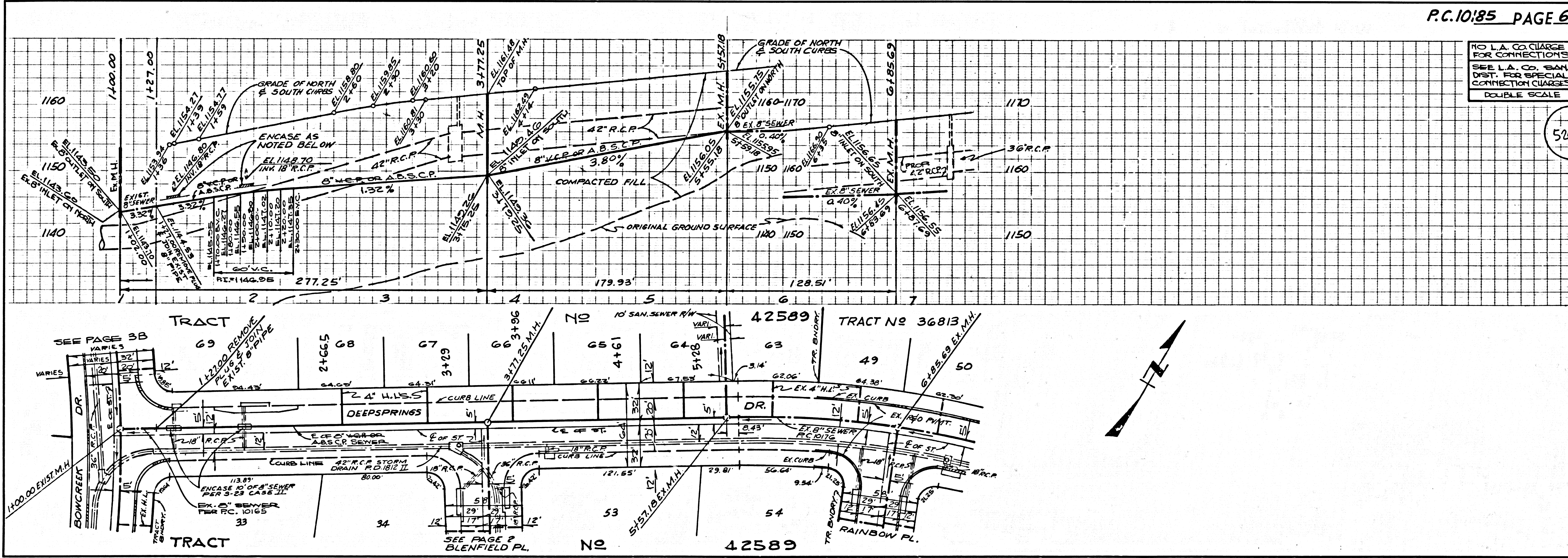
NO L.A. CO. CHARGE FOR CONNECTIONS  
SEE L.A. CO. SAN. DIST. FOR SPECIAL CONNECTION CHARGES  
DOUBLE SCALE

50250



NO L.A. CO. CHARGE FOR CONNECTIONS  
SEE L.A. CO. SAN. DIST. FOR SPECIAL CONNECTION CHARGES  
DOUBLE SCALE

50251



10182

BC 10182

CSASA 94 T582