

1-443 243H121

B.M. BL 813 ELEV. 1338.785

L & T CONC WALK TO HSE
23410 MAPLE ST 105 FT
S C/L & 60 FT W/C/L VALLEY ST
NEWHALL QUAD. 1972

PAGE 2	REVISE STREET GRADES FROM STA. 0+00 TO STA. 4+08
PAGE 4	REVISE STREET GRADES & VERTICAL SEWER DESIGN FROM STA. 1+00 TO STA. 3+08
PAGE 5A	REVISE STREET GRADES & VERTICAL SEWER DESIGN FROM STA. 3+08 TO STA. 11+25 (T)
PAGE 5B	REVISE STREET GRADES & VERTICAL SEWER DESIGN FROM STA. 1+00 TO STA. 4+22.82

REVISION NO. 1

APPROVED BY:
Sanjiv G. Patel
DEPT. OF PUBLIC WORKS

DATE: 5-27-86

PRIVATE ENGINEER'S NOTICE TO CONTRACTORS

This is to certify that the above described work has been approved by the Private Engineer for the Department of Public Works. The contractor shall be responsible for the construction of the work in accordance with the plans and specifications. The contractor shall also be responsible for the safety of the work and for the protection of the public. The contractor shall also be responsible for the payment of the permit fee and for the payment of the cost of the construction. The contractor shall also be responsible for the payment of the cost of the construction. The contractor shall also be responsible for the payment of the cost of the construction.

John N. Sarracino
19233

GENERAL NOTES:

- ELEVATIONS ARE IN FEET ABOVE U.S.C. & G.S. SEA LEVEL DATUM OF 1929
- NO REVISIONS SHALL BE MADE IN THESE PLANS WITHOUT THE APPROVAL OF THE DEPT. OF PUBLIC WORKS
- NO REPRESENTATIVE OF THE DEPT. OF PUBLIC WORKS WILL SURVEY OR LAY OUT ANY PORTION OF THE WORK
- GRADES TO WHICH THIS IMPROVEMENT IS TO BE CONSTRUCTED ARE SHOWN ON PLANS AND PROFILES. GRADE POINTS FOR TOP OF CURBS, CENTER LINE OF STREETS, OR CENTER LINE OF ALLEYS ARE SHOWN BY CIRCLES ON PROFILES. AT ALL POINTS BETWEEN DESIGNATED POINTS THE GRADE SHALL BE ESTABLISHED SO AS TO CONFORM TO A STRAIGHT LINE DRAWN BETWEEN SAID DESIGNATED POINTS.
- THE PRIVATE ENGINEER SHALL FURNISH THE DEPT. OF PUBLIC WORKS WITH GRADE SHEETS AND STATIONING FOR ALL HOUSE LATERALS AND "Y" OR "T" BRANCHES AND SHALL PROVIDE STAKES FOR THEM AT THEIR PROPER LOCATIONS WITH STATIONING PLAINLY MARKED. ALL HOUSE LATERALS SHALL BE CONSTRUCTED IN A STRAIGHT ALIGNMENT AT RIGHT ANGLES FROM THE MAIN LINE SEWER EXCEPT AS SHOWN ON THE PLANS. HOUSE LATERALS FROM CHIMNEYS SHALL NOT HAVE AN ANGLE OF LESS THAN 45° WITH THE MAIN LINE SEWER. ANY CHANGE IN ALIGNMENT SHALL BE REQUESTED IN WRITING BY THE PRIVATE ENGINEER.
- THE PRIVATE ENGINEER SHALL FURNISH THE HOUSE LATERAL DEPTH AT THE PROPERTY LINE BELOW THE TOP OF CURB ELEVATION FOR EACH HOUSE LATERAL ON THE GRADE SHEET.
- BEFORE WORK CAN BE STARTED, THE CONTRACTOR MUST OBTAIN A PERMIT TO EXCAVATE IN COUNTY STREETS FROM THE L.A. COUNTY ROAD DEPT., DISTRICT OFFICE NO. 5 AND PAY A FEE TO THE DEPT. OF PUBLIC WORKS, 550 S. VERMONT AVENUE, LOS ANGELES, CA 90020, TO COVER THE COST OF CONSTRUCTION INSPECTION AND RECORD PLANS.
- IF WORK IS TO BE DONE IN A STATE HIGHWAY, A PERMIT MUST BE OBTAINED FROM THE STATE OF CALIFORNIA, DIVISION OF HIGHWAYS, 120 SOUTH SPRING STREET, LOS ANGELES, CALIFORNIA
- APPROVAL OF THIS PLAN BY THE COUNTY OF LOS ANGELES DOES NOT CONSTITUTE A REPRESENTATION AS TO THE ACCURACY OF THE LOCATION OF OR THE EXISTENCE OR NON-EXISTENCE OF ANY UNDERGROUND UTILITY PIPE, OR STRUCTURE WITHIN THE LIMITS OF THIS PROJECT. THIS NOTE APPLIES TO ALL PAGES.
- REFER TO SECTION 71041 OF THE STANDARD SPECIFICATIONS, REGARDING SAFETY ORDERS.
- PRIOR TO THE ISSUANCE OF THE REQUIRED SEWER CONSTRUCTION PERMIT, THE CONTRACTOR SHALL OBTAIN AND FILE WITH THE DEPT. OF PUBLIC WORKS COPIES OF A PERMIT TO EXCAVATE IN COUNTY STREETS FROM THE LOS ANGELES COUNTY ROAD DEPARTMENT. A PERMIT FOR EXCAVATIONS AND TRENCHES FROM THE STATE OF CALIFORNIA, DIVISION OF INDUSTRIAL SAFETY AND A CERTIFICATE OF WORKER'S COMPENSATION INSURANCE WITH THE DEPARTMENT OF PUBLIC WORKS, 550 SOUTH VERMONT AVENUE, LOS ANGELES, CALIFORNIA 90020, NAMED AS THE CERTIFICATE HOLDER TO BE NOTIFIED 30 DAYS PRIOR TO CANCELLATION OF POLICY.

DOUBLE SCALE

PROFILE, ALIGNMENT AND GRADE OF PAGE 1

SANITARY SEWERS

TO BE CONSTRUCTED IN

TRACT NO. 38301
PRIVATE CONTRACT NO. 10186

INDEX A-26 C&D4

W.S. 62

3 SHEETS, 5 PAGES

51515

SCALE: VERT. 1"=8'
HORIZ. 1"=40'

SEPTEMBER, 1983

PREPARED IN THE OFFICES OF

LIND E. HILLERUD, INC.
2065 HUNTINGTON DRIVE
SAN MARINO, CA 91078

BY: *John N. Sarracino*
REG. C. E. No. 19233
JOHN N. SARRACINO

THE FOLLOWING LATEST REVISED STANDARD PLANS ON FILE IN THE OFFICE OF THE DEPARTMENT OF PUBLIC WORKS SHALL APPLY IN THE CONSTRUCTION OF THIS PROJECT:

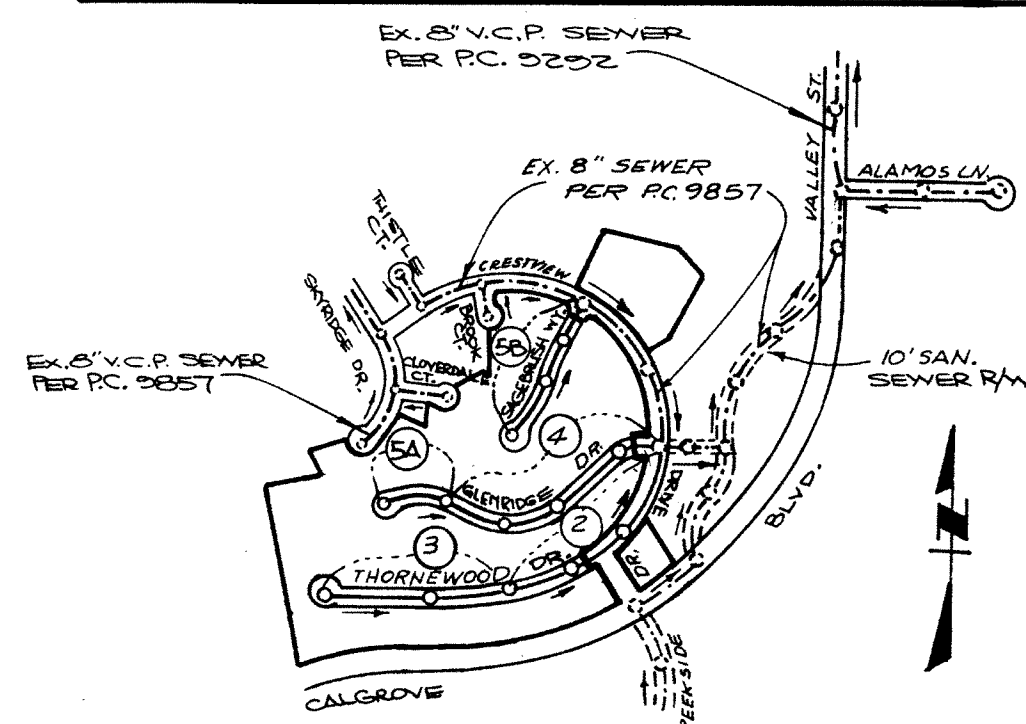
LEGEND	5-1
MINIMUM PUBLIC SAFETY REQUIREMENTS	5-2
BRICK MANHOLE	5-3
STANDARD MANHOLE STEP	5-17
BEDDING FOR SEWER PIPE	5-21
CRADLING AND ENCASEMENT	5-23
WYE OR TEE SUPPORT	5-26
ALLOWABLE TRENCH WIDTHS	5-33
LOCKING MANHOLE FRAME AND COVER	5-34
NON-REINFORCED PRECAST CONCRETE MANHOLE	5-36
BEDDING REQUIREMENTS FOR PLASTIC PIPE	5-37
CHIMNEY PIPE AND BASE	5-38

GENERAL NOTES CONT'D.

- ALL REFERENCES ON THIS PLAN TO THE COUNTY ENGINEER, THE ROAD DEPARTMENT, OR THE FLOOD CONTROL DISTRICT SHALL APPLY TO THOSE APPROPRIATE SECTIONS OF THE DEPARTMENT OF PUBLIC WORKS.
- BEFORE BREAKING INTO OR CONSTRUCTION ON A COUNTY SANITATION DISTRICT SEWER AND PRIOR TO FINAL ACCEPTANCE OF THE PROJECT, SANITATION DISTRICT INSPECTOR SHALL BE NOTIFIED BY PHONE 818 - 962-8605 SO THAT REQUIRED INSPECTION CAN BE MADE.

CONSTRUCTION NOTES CONT'D.

- FULL COMPLIANCE WITH PART IV OF THE SPECIAL PROVISIONS IS REQUIRED FOR THE INSTALLATION OF A.B.S. COMPOSITE PIPE.
- MANHOLE WATER STOP GASKETS AND CLAMPS ARE REQUIRED FOR THE CONNECTION OF A.B.S. COMPOSITE PIPE TO MANHOLE STRUCTURES.
- A.B.S. SOLID WALL PIPE MUST BE USED FOR WYE AND HOUSE LATERAL CONNECTIONS TO A.B.S. COMPOSITE MAINLINE SEWER PIPE.
- A.B.S. COMPOSITE PIPE SHALL BE BEDDED IN CONFORMANCE WITH THE TABLE IN SECTION B-3-1 OF PART IV OF THE SPECIAL PROVISIONS.
- THREE DEGREE DEFLECTION COUPLERS ARE REQUIRED FOR RADIUS OF CURVATURE LESS THAN 380 FEET WHEN USING 8" A.B.S. COMPOSITE PIPE.
- NO CONNECTIONS FOR DISPOSAL OF INDUSTRIAL WASTE IS ALLOWED IF A.B.S. COMPOSITE PIPE IS USED.
- SEWER LINE CURVATURE SHALL NOT BE ACHIEVED BY PULLING OF JOINTS OR BEVELING PIPE ENDS WHEN USING PLASTIC PIPE INCLUDING A.B.S. COMPOSITE PIPE.
- ALL WYES AND/OR HOUSE LATERALS ARE TO BE LOCATED AT LEAST FIVE FEET APART AND WHEN POSSIBLE NOT CLOSER THAN FIVE FEET TO ANY MANHOLE.
- A.B.S. SOLID WALL PIPE IS NOT ACCEPTABLE FOR USE AS MAINLINE SEWER.
- ONLY WYE BRANCHES ARE TO BE USED FOR CONNECTION TO A.B.S. COMPOSITE MAINLINE SEWER PIPE.



NOTE: NUMBERS IN CIRCLES INDICATE PAGE NUMBERS

INDEX MAP
TRACT NO. 38301
P.C. 10186
SCALE: 1" = 600'

NO CONNECTION FOR THE DISPOSAL OF INDUSTRIAL WASTES SHALL BE MADE TO SEWERS SHOWN ON THESE DRAWINGS UNTIL A PERMIT FOR INDUSTRIAL WASTEWATER DISCHARGE HAS BEEN ISSUED BY THE SANITATION DISTRICTS FOR SAID CONNECTION.

LOT 72 IS A NON-BUILDABLE LOT & WILL NOT BE SERVED BY THIS SEWER

NO HOUSE CONNECTIONS SHOULD BE PERMITTED UNTIL OUTLET P.C. 9857 IS ACCEPTED BY THE DEPT. OF PUBLIC WORKS

LOTS 53, 54, 55, 56, 66, 67, 68, 69, 71, 73, 74, 75, 76, 77, 78, 80, 81, 82, 83, 84, 85, 86 & 87 ARE SERVED BY EXISTING P.C. 9857

1

BC 10186

10186

COUNTY OF LOS ANGELES, CALIFORNIA

THOMAS A. TIDEHANSON, DIRECTOR, DEPARTMENT OF PUBLIC WORKS

CHARLES W. CARRY, CHIEF ENGINEER, DISTRICT NO. 22

APPROVED: *William D. Hooper* 12-5-83
DATE: 12/5/83

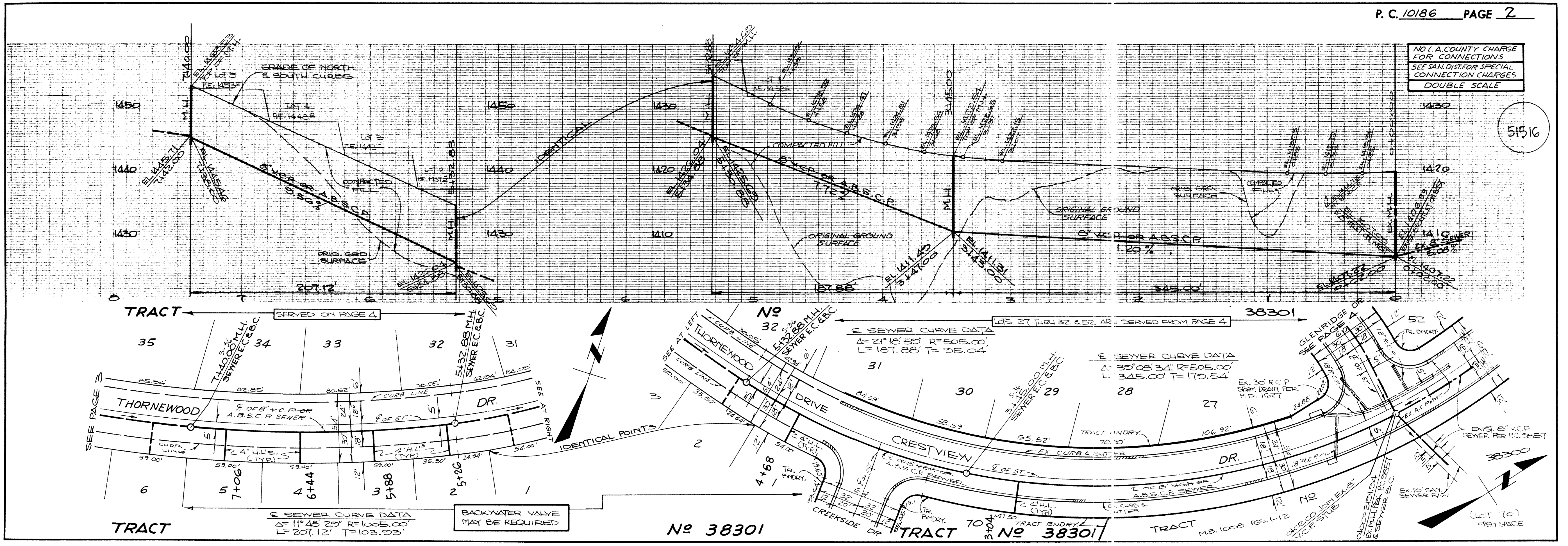
CHECKED: *William D. Hooper* 12-3-83
DATE: 12/3/83

REG. C.E. NO. 32149

SANTA CLARITA VALLEY BLDG. DIST. 8.2

NO L.A. COUNTY CHARGE FOR CONNECTIONS
SEE SAN DIST. FOR SPECIAL CONNECTION CHARGES
DOUBLE SCALE

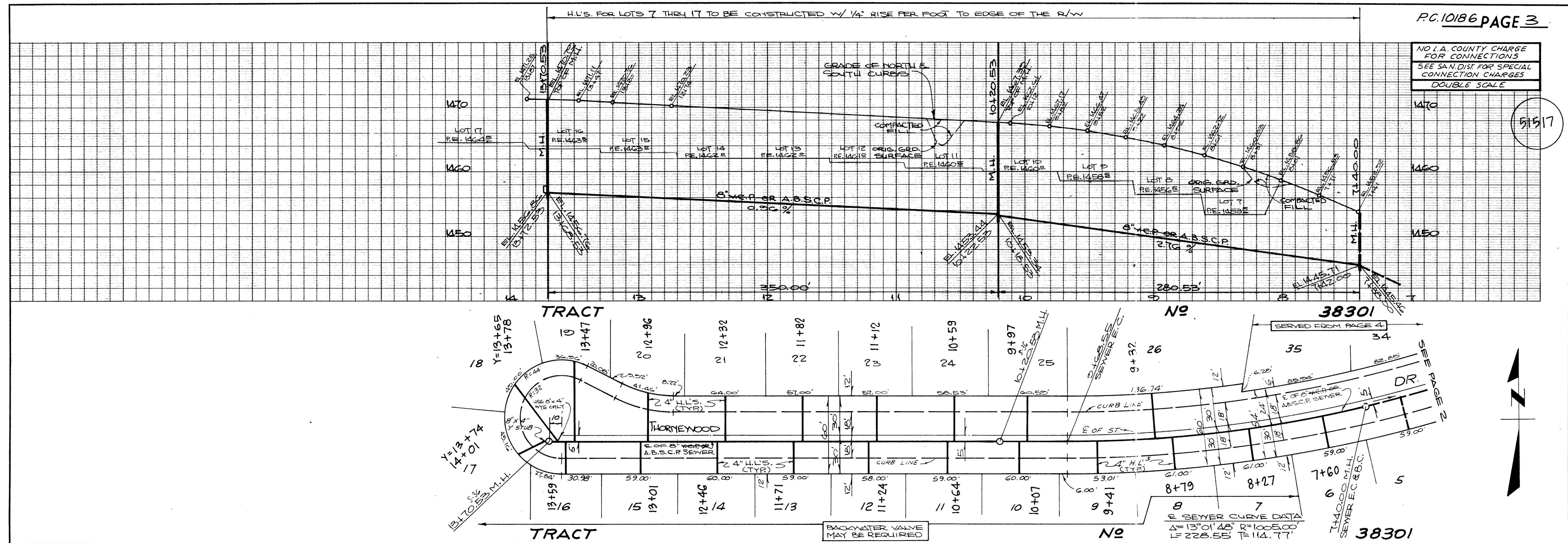
51516



10385

9A

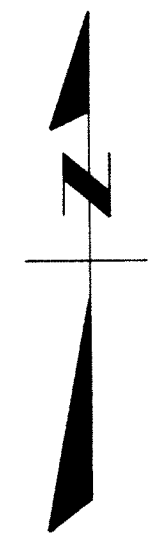
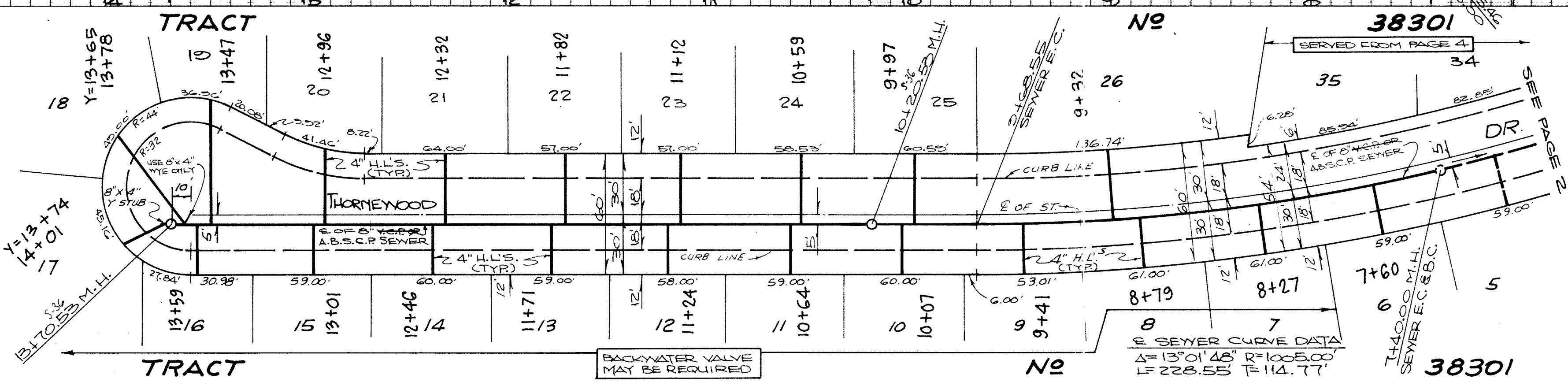
TRACT



P.C. 10186 PAGE 3

NO L.A. COUNTY CHARGE FOR CONNECTIONS
SEE SAN DIST FOR SPECIAL CONNECTION CHARGES
DOUBLE SCALE

51517



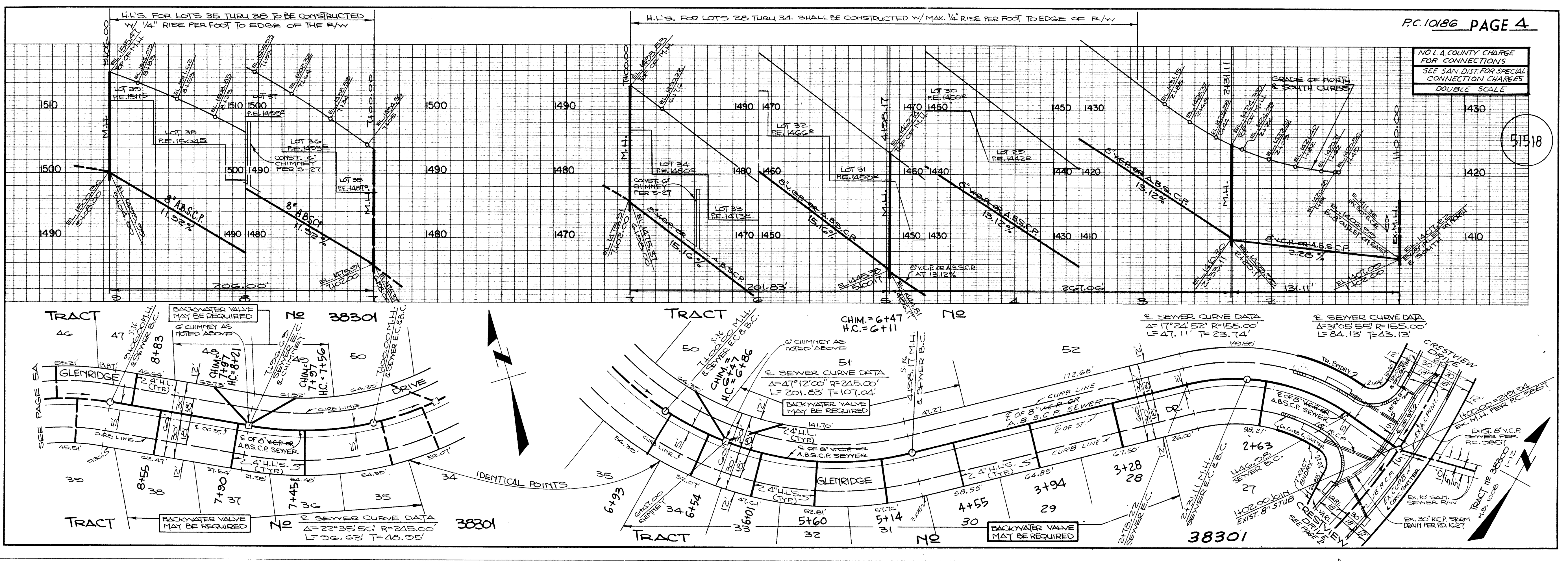
5

88101.29

10883

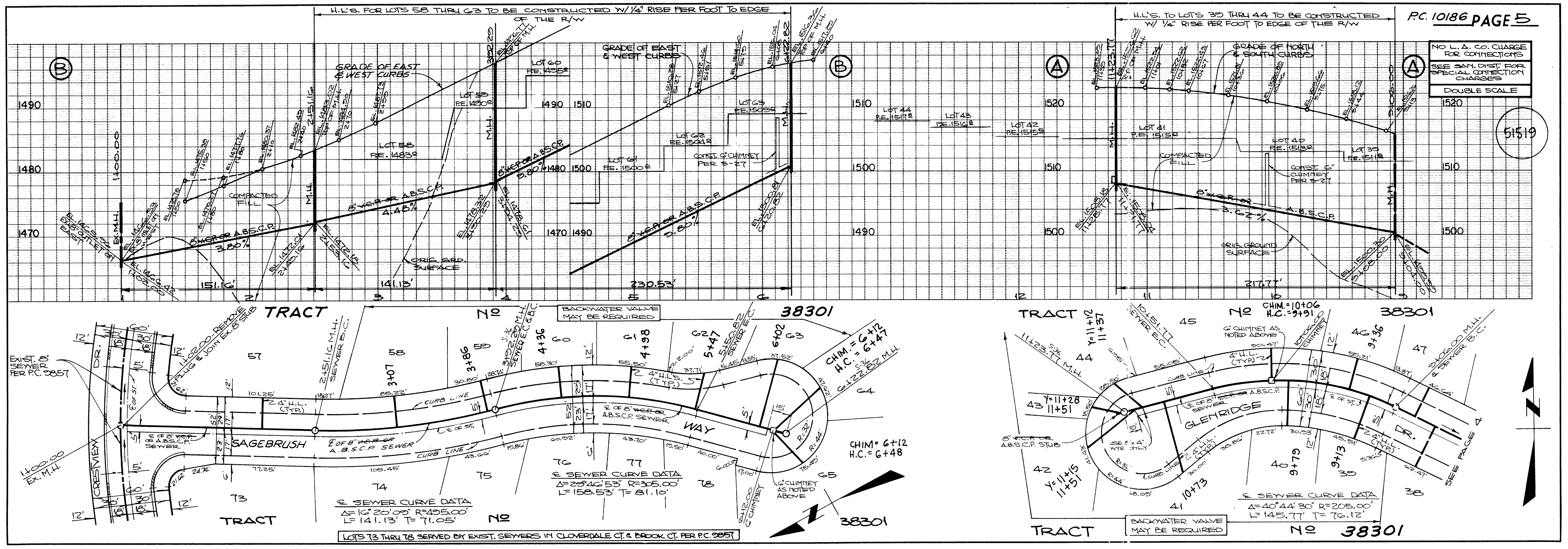
NO L.A. COUNTY CHARGE FOR CONNECTIONS SEE SAN. DIST. FOR SPECIAL CONNECTION CHARGES DOUBLE SCALE

51518



91M

TRACT



BC 10186