

TO BE CONSTRUCTED IN  
**TRACT NO. 35565**  
**PRIVATE CONTRACT NO. 10187**

W.S. 39-D,2  
 4 SHEETS, 7 PAGES  
 SCALE: VERT. 1" = 8' HORIZ. 1" = 20'  
 SEPTEMBER, 1983  
 PREPARED IN THE OFFICES OF  
**PFEILER & ASSOCIATES, ENGINEERS**  
 1559 W. Commonwealth Ave., Fullerton, California 92633  
 BY: *Edward Pfeiler*  
 REG. C. E. No. 12307

50596

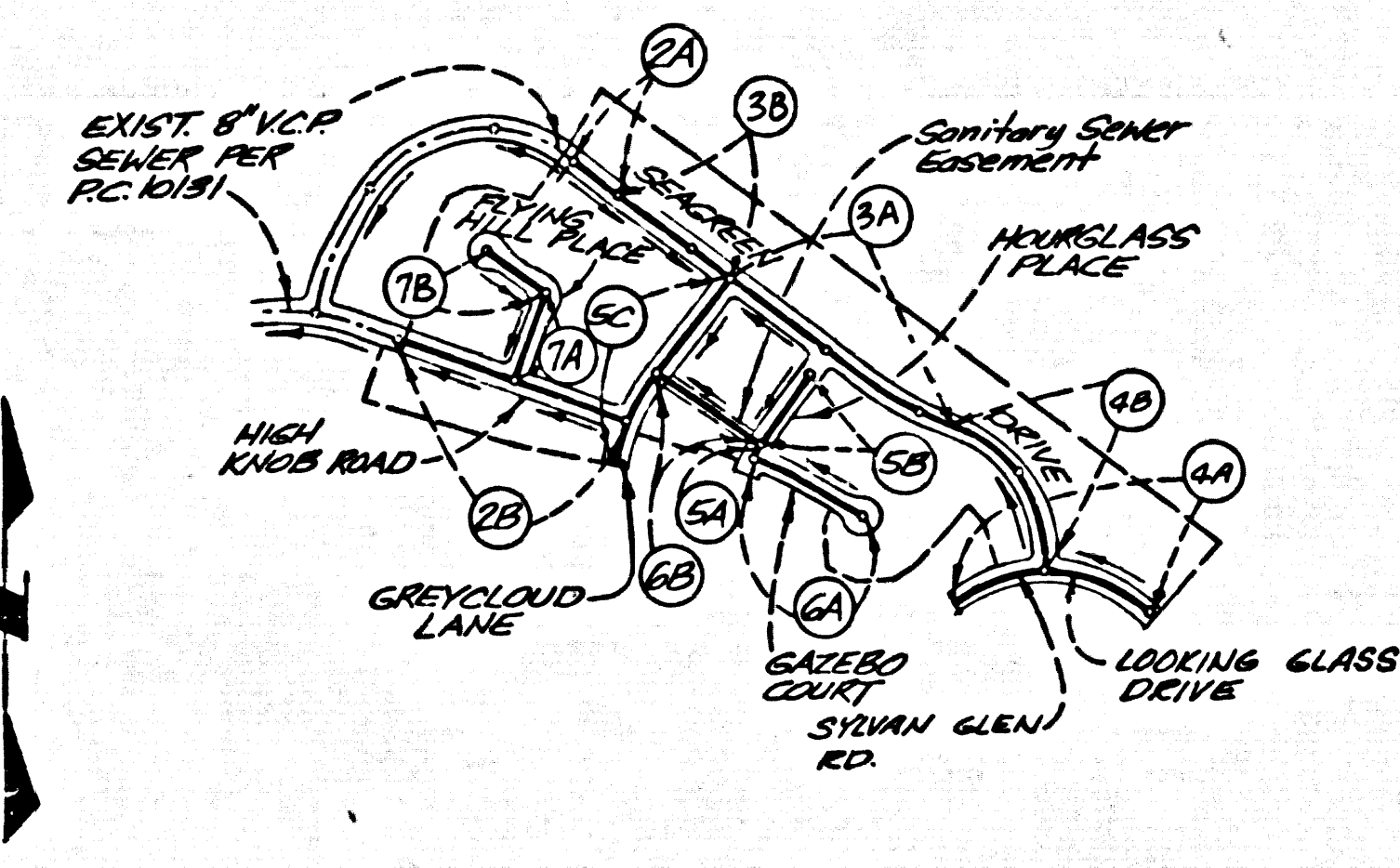
DOUBLE SCALE

B.M. CG 9918 ELEV. 694.931  
 R.D.M. Tag in CB 34 ft. E/D. B.C.R. 25 ft. S.  
 100 ft. E/D & Int. Diamond Bar Blvd. &  
 Sunset Crossing Rd.  
 Otterbein QUAD. 19 80

**CONSTRUCTION NOTES CONT.:**

16. FULL COMPLIANCE WITH PART IV OF THE SPECIAL PROVISIONS IS REQUIRED FOR THE INSTALLATION OF A.B.S. COMPOSITE PIPE.
17. MANHOLE LATER STOP GARGETS AND CLAMPS ARE REQUIRED FOR THE CONNECTION OF A.B.S. COMPOSITE PIPE TO MANHOLE STRUCTURES.
18. A.B.S. SOLID SMALL PIPE MUST BE USED FOR LIVES AND HOUSE LATERAL CONNECTIONS TO A.B.S. COMPOSITE MAIN LINE SEWER PIPE.
19. A.B.S. COMPOSITE PIPE SHALL BE BEDDED IN CONFORMANCE WITH THE TABLE IN SECTION B-3.1 OF PART IV OF THE SPECIAL PROVISIONS.
20. 3-DEGREE DEFLECTION COEFFICIENT SHALL BE USED TO ACCOMPLISH RADIUS OF CURVATURE LESS THAN 380'.

REVISION NO. 1 DATE: 4/12/84  
 REVISED SEWER ELEVATIONS ON HIGH KNOB ROAD BY G.S. PAGES 28, 36, 68, 71  
 APPROVED *Sally G. Hall* 4-16-84  
 OFFICE OF COUNTY ENGINEER



**INDEX MAP**  
 P.C. 10187 TRACT NO. 35565  
 SCALE: 1" = 600'

NOTE: NUMBERS IN CIRCLES INDICATE PAGE NUMBERS

No Connection for the disposal of Industrial Wastes shall be made to Sewers shown on these drawings until a permit for Industrial Waste Water Discharge has been issued by the Sanitation Districts for said connection.

Before breaking into or construction on a County Sanitation District Sewer and prior to final acceptance of the project, Sanitation District Inspector shall be notified by phone - 962-8605, so that required inspection can be made.

**GENERAL NOTES:**

1. ELEVATIONS ARE IN FEET ABOVE U.S.C. & G.S. SEA LEVEL DATUM OF 1928.
2. NO REVISIONS SHALL BE MADE IN THESE PLANS WITHOUT THE APPROVAL OF THE COUNTY ENGINEER.
3. NO REPRESENTATIVE OF THE COUNTY ENGINEER WILL SURVEY OR LAY OUT ANY PORTION OF THE WORK.
4. GRADES TO WHICH THIS IMPROVEMENT IS TO BE CONSTRUCTED ARE SHOWN ON PLANS AND PROFILES. GRADE POINTS FOR TOP OF CURBS, CENTER LINE OF STREETS, OR CENTER LINE OF ALLEYS ARE SHOWN BY CIRCLES ON PROFILES. AT ALL POINTS BETWEEN DESIGNATED POINTS THE GRADE SHALL BE ESTABLISHED SO AS TO CONFORM TO A STRAIGHT LINE DRAWN BETWEEN SAID DESIGNATED POINTS.
5. THE PRIVATE ENGINEER SHALL FURNISH THE COUNTY ENGINEER WITH GRADE SHEETS AND STATIONING FOR ALL HOUSE LATERALS AND "Y" OR "T" BRANCHES AND SHALL PROVIDE STAKES FOR THEM AT THEIR PROPER LOCATIONS WITH STATIONING PLAINLY MARKED. ALL HOUSE LATERALS SHALL BE CONSTRUCTED IN A STRAIGHT ALIGNMENT AT RIGHT ANGLES FROM THE MAIN LINE SEWER EXCEPT AS SHOWN ON THE PLANS. HOUSE LATERALS FROM CHIMNEYS SHALL NOT HAVE AN ANGLE OF LESS THAN 45° WITH THE MAIN LINE SEWER. ANY CHANGE IN ALIGNMENT SHALL BE REQUESTED IN WRITING BY THE PRIVATE ENGINEER.
6. THE PRIVATE ENGINEER SHALL FURNISH THE HOUSE LATERAL DEPTH AT THE PROPERTY LINE BELOW THE TOP OF CURB ELEVATION FOR EACH HOUSE LATERAL ON THE GRADE SHEET.
7. BEFORE WORK CAN BE STARTED, THE CONTRACTOR MUST OBTAIN A PERMIT TO EXCAVATE IN COUNTY STREETS FROM THE L.A. COUNTY ROAD DEPT., DISTRICT OFFICE NO. 1 AND PAY A FEE TO THE COUNTY ENGINEER, 300 S. VERNOR AVENUE, LOS ANGELES, CA 90007 TO COVER THE COST OF CONSTRUCTION INSPECTION AND RECORD PLANS.
8. IF WORK IS TO BE DONE IN A STATE HIGHWAY, A PERMIT MUST BE OBTAINED FROM THE STATE OF CALIFORNIA, DIVISION OF HIGHWAYS, 120 SOUTH SPRING STREET, LOS ANGELES, CALIFORNIA.
9. APPROVAL OF THIS PLAN BY THE COUNTY OF LOS ANGELES DOES NOT CONSTITUTE A REPRESENTATION AS TO THE ACCURACY OF THE LOCATION OF OR THE EXISTENCE OR NON-EXISTENCE OF ANY UNDERGROUND UTILITY PIPE, OR STRUCTURE WITHIN THE LIMITS OF THIS PROJECT. THIS NOTE APPLIES TO ALL PAGES.
10. REFER TO SECTION 7.10.4.1 OF THE STANDARD SPECIFICATIONS, REGARDING SAFETY ORDERS.
11. PRIOR TO THE ISSUANCE OF THE REQUIRED SEWER CONSTRUCTION PERMIT, THE CONTRACTOR SHALL OBTAIN AND FILE WITH THE COUNTY ENGINEER COPIES OF A PERMIT TO EXCAVATE IN COUNTY STREETS FROM THE LOS ANGELES COUNTY ROAD DEPARTMENT, A PERMIT FOR EXCAVATIONS AND TRENCHES FROM THE STATE OF CALIFORNIA, DIVISION OF INDUSTRIAL SAFETY AND A CERTIFICATE OF WORKERS COMPENSATION INSURANCE WITH THE DEPARTMENT OF COUNTY ENGINEER, 300 SOUTH VERNOR, RM. 408, LOS ANGELES, CALIFORNIA 90007, NAMED AS THE CERTIFICATE HOLDER TO BE NOTIFIED 30 DAYS PRIOR TO CANCELLATION OF POLICY.

**CONSTRUCTION NOTES:**

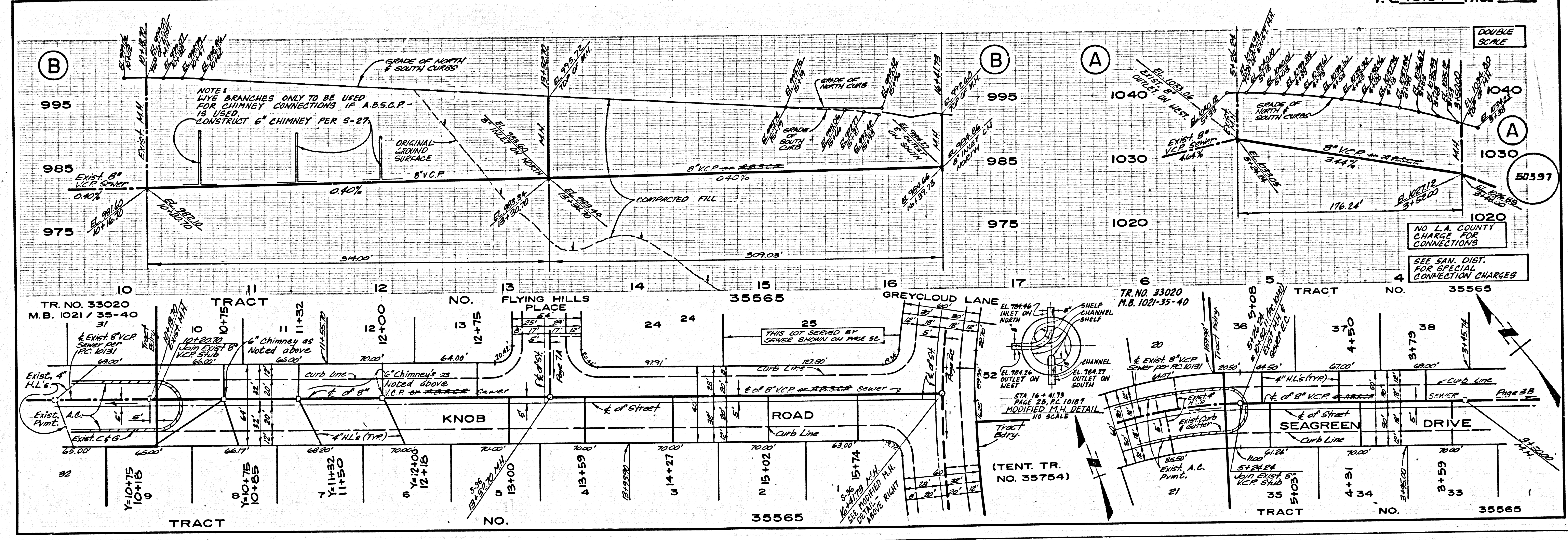
1. WORK SHALL BE CONSTRUCTED ACCORDING TO THE STANDARD SPECIFICATIONS FOR PUBLIC WORKS CONSTRUCTION (1982 EDITION WITH 1983 SUPPLEMENTS) AND COUNTY ENGINEER SPECIAL PROVISIONS FOR THE CONSTRUCTION OF SANITARY SEWERS DATED SEPTEMBER 21, 1978, AND SHALL BE PROSECUTED ONLY IN THE PRESENCE OF THE COUNTY ENGINEER.
2. THE CONTRACTOR SHALL NOTIFY THE ENVIRONMENTAL DEVELOPMENT DIVISION BY TELEPHONE, 720-2150, AT LEAST TWENTY-FOUR HOURS BEFORE STARTING ANY WORK UNDER THIS CONTRACT.
3. HOUSE LATERALS TO BE CONSTRUCTED WITH INVERTS AT PROPERTY LINE 8 FEET BELOW CURB GRADE EXCEPT AS NOTED.
4. USE OF TEE BRANCHES MAY BE USED FOR CONNECTIONS TO MAINLINE SEWERS EXCEPT AS NOTED.
5. LIFE BRANCHES ONLY MAY BE USED FOR CONNECTIONS TO MAINLINE SEWER IF A.B.S.C.P. IS USED.
6. ALL STRUCTURES SHALL BE EITHER BRICK MANHOLES PER S-3 OR PRECAST CONCRETE MANHOLES PER S-28 EXCEPT AS NOTED.
7. PROVIDE STAKES ON THE PROPERTY LINE OR PROPERTY LINES PRODUCED AT RIGHT ANGLES TO THE SEWER LINE AT THE CENTER LINE OF EACH MANHOLE.
8. MANHOLE TOPS IN UNIMPROVED RIGHTS OF WAY TO BE SIX INCHES ABOVE FINISHED GRADE.
9. VITRIFIED CLAY PIPE JOINTS SHALL BE TYPE "D" OR "E" PER STANDARD SPECIFICATIONS SECTION 208-2.
10. IF A POWER POLE IS WITHIN THREE FEET OF THE SEWER, THE SEWER SHALL BE ENCASED, PER S-28 CASE B, TWO FEET ON EACH SIDE FROM THE POINT OF INTERFERENCE.
11. IF DURING THE COURSE OF CONSTRUCTION IT IS DETERMINED THAT THERE IS LESS THAN FOUR FEET OF COVER OVER THE TOP OF A MAIN LINE OR HOUSE LATERAL SEWER WHICH IS NOT INDICATED ON THE PLANS, THE PIPE SHALL BE ENCASED PER S-28 CASE B UNLESS OTHERWISE APPROVED BY THE COUNTY ENGINEER.
12. ALL JOINTS BETWEEN CAST IRON PIPE AND VITRIFIED CLAY PIPE SHALL BE MADE WITH A RUBBER SLEEVE JOINT, TYPE "C" OR "D", WITH BUSHINGS IF NECESSARY PER STANDARD SPECIFICATIONS SECTION 208-2.
13. ALL JOINTS BETWEEN CAST IRON PIPE SHALL BE MADE WITH APPROVED FITTINGS.
14. SEWERS TO BE TESTED FOR LEAKAGE PER SECTION 208-1.4 OF THE STANDARD SPECIFICATIONS AND SPECIAL PROVISIONS.
15. RESURFACE ALL TRENCHES WITHIN PAVED AREAS TO MEET L.A. COUNTY ROAD DEPT. OR CALIFORNIA STATE HIGHWAY REQUIREMENTS IN ACCORDANCE WITH PERMITS.
16. FULL COMPLIANCE WITH SECTION 208-1.3.5 OF THE SPECIAL PROVISIONS WILL BE REQUIRED FOR BACKFILL IN STREETS. CERTIFICATION OF BACKFILL COMPACTION AND SAND EQUIVALENTS BY A QUALIFIED, REGISTERED TESTING LABORATORY SHALL BE PROVIDED BY THE PERMITTEE PRIOR TO THE ISSUANCE OF A CERTIFICATE OF PARTIAL ACCEPTANCE.
17. SPECIAL BACKFILL IN EASTWEST CONSTRUCTION: (A) BACKFILL TRENCH AND REPLACE OTHER EARTH SO AS TO ACHIEVE THE NATURAL OR FINISHED GRADES AND SLOPES SHOWN ON THE GRADING PLAN APPROVED FOR THIS DEVELOPMENT BY THE BUILDING AND SAFETY DIVISION; (B) ALL BACKFILL AND EARTH REPLACES SHALL BE COMPACTED TO A MINIMUM OF 80% OF MAXIMUM DENSITY PER A.S.T.M. METHOD OF TEST D1557 BY AS MODIFIED; ACCEPTABLE CERTIFICATION OF SUCH COMPACTION SHALL BE SUBMITTED TO THE ENVIRONMENTAL DEVELOPMENT DIVISION.

THE FOLLOWING LATEST REVISED STANDARD PLANS ON FILE IN THE OFFICE OF THE COUNTY ENGINEER SHALL APPLY IN THE CONSTRUCTION OF THIS PROJECT.

ISDN	5-1
MINIMUM PUBLIC SAFETY REQUIREMENTS	5-2
BRICK MANHOLE	5-3
STANDARD MANHOLE STEP	5-7
BEDDING FOR SEWER PIPE	5-9
CHASING AND ENCASING	5-20
WYS ON THE SUPPORT	5-26
ALLOWABLE TRENCH WIDTHS	5-28
LOCKING MANHOLE FRAME AND COVER	5-30
NON-BRICKMANHOLE PRECAST CONCRETE MANHOLE	5-34
BEDDING REQUIREMENTS FOR PLASTIC PIPE	5-21A
CHIMNEY PIPE AND BASE	5-27

COUNTY OF LOS ANGELES, CALIFORNIA

STEPHEN J. KOONCE, COUNTY ENGINEER WALTER E. GARRISON, CHIEF ENGINEER  
 APPROVED *Samuel Miller* 11/19/83 APPROVED *Edward Pfeiler* 11/16/83  
 SAN DIMAS REGIONAL ENGINEER DATE PROJECT ENGINEER  
 CHECKED *Ralph David Sait* 11/17/83  
 REG. C.E. NO. 11887  
 SAN DIMAS BLDG. DIST. 1000



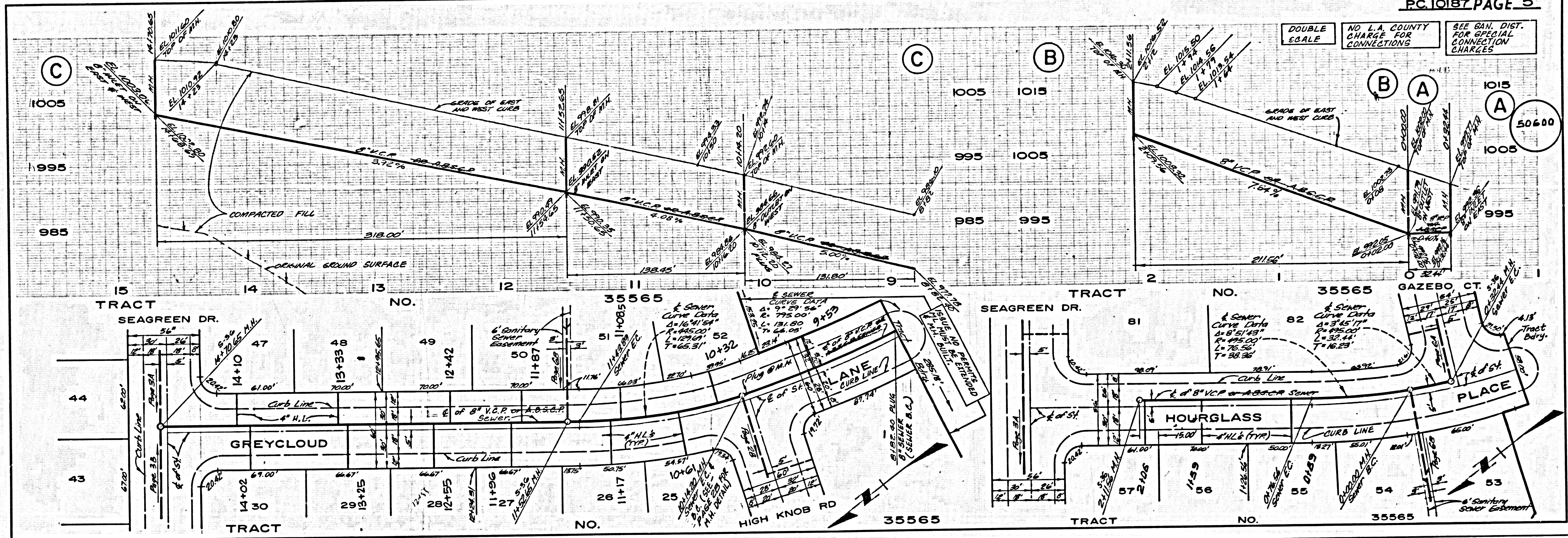
78101 29

20225 ON TRACT

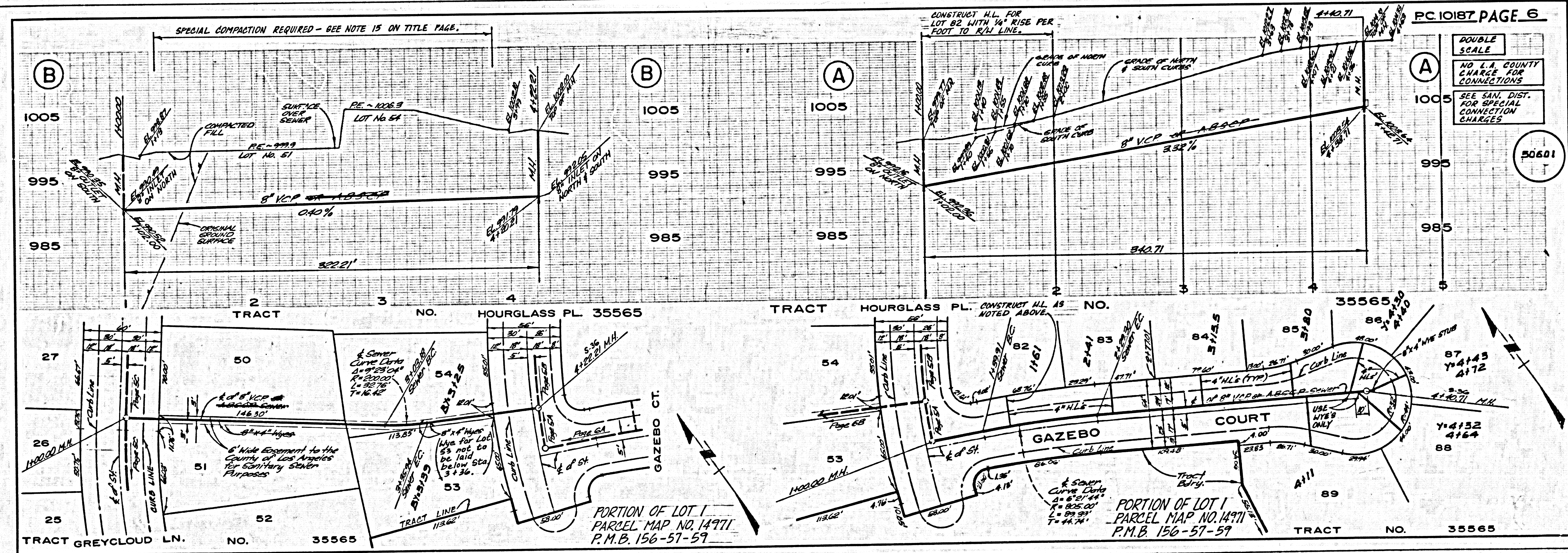








DOUBLE SCALE  
NO L.A. COUNTY CHARGE FOR CONNECTIONS  
SEE SAN. DIST. FOR SPECIAL CONNECTION CHARGES



DOUBLE SCALE  
NO L.A. COUNTY CHARGE FOR CONNECTIONS  
SEE SAN. DIST. FOR SPECIAL CONNECTION CHARGES

78101 29

23223 ON TRACT

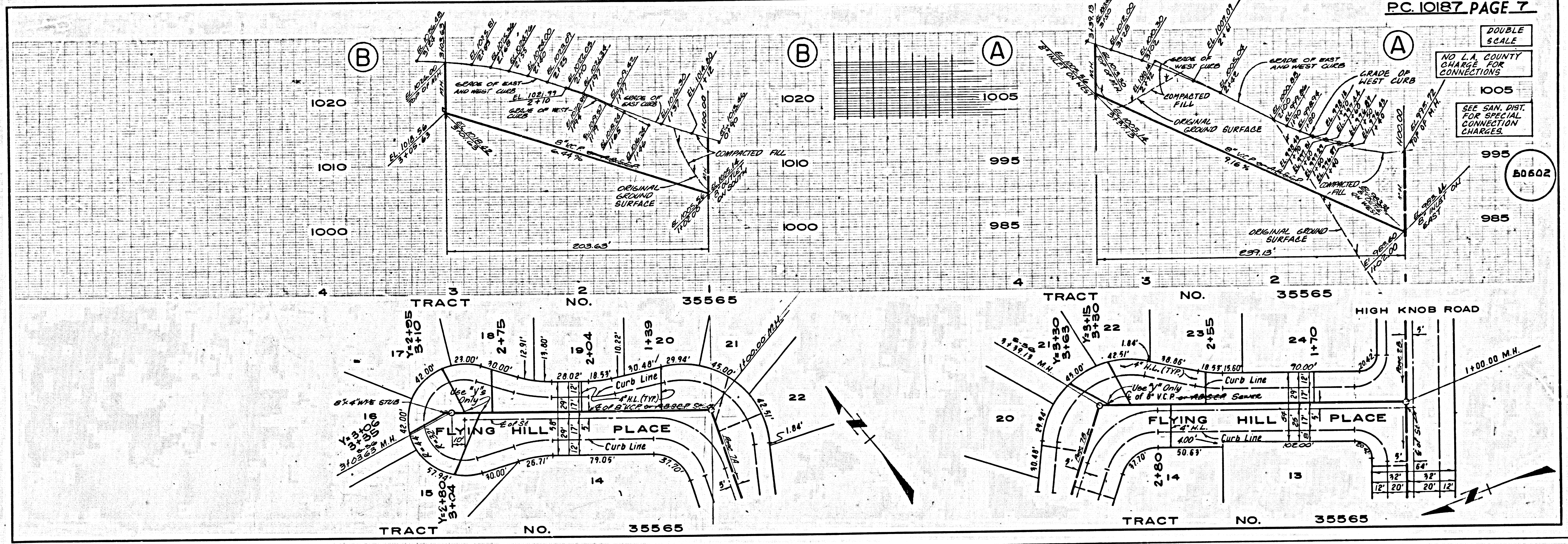


DOUBLE SCALE

NO L.A. COUNTY CHARGE FOR CONNECTIONS

SEE SAN. DIST. FOR SPECIAL CONNECTION CHARGES.

50502



TRACT NO. 35565

TRACT NO. 35565