

SANITARY SEWERS

TO BE CONSTRUCTED IN

PARCEL MAP NO. 15717

PRIVATE CONTRACT NO. 10193

A-64, A2

W.S. 62

2 SHEETS, 3 PAGES

50479

SCALE: VERT. 1"=5' HORIZ. 1"=40'

OCTOBER, 1983

PREPARED IN THE OFFICES OF SHAND ENGINEERING ASSOCIATES 12520 BOYD AVE., VAN NUYS, CA 91411 (818) 707-8550

BY: K. G. L. C. B. G. REG. C. E. NO. 21823

THE FOLLOWING LATEST REVISED STANDARD PLANS ON FILE IN THE OFFICE OF THE COUNTY ENGINEER SHALL APPLY IN THE CONSTRUCTION OF THIS PROJECT

ASPHALT	5.1
MINIMUM PUBLIC SAFETY REQUIREMENTS	5.2
BRICK MANHOLE	5.3
STANDARD MANHOLE FITTING	5.4
ROOFING FOR SEWER PIPE	5.5
CHASING AND ENCASUREMENT	5.6
PIPE ON THE SUPPORT	5.7
ALLOWABLE TRENCH WIDTHS	5.8
LOCKING MANHOLE FRAM AND COVER	5.9
NON-REINFORCED PRECAST CONCRETE MANHOLE	5.10

COUNTY OF LOS ANGELES, CALIFORNIA

STEPHEN J. KOONCE, COUNTY ENGINEER CHARLES W. CARRY, CHIEF ENGINEER

APPROVED: [Signature] DATE: 11-15-83

CHECKED: [Signature] DATE: 11-15-83

REG. C.E. NO. 32149

SANTA CLARITA VALLEY BLDG. DIST. 22

DOUBLE SCALE

REVISION NO. 1 DATE 4-19-84
PAGE 2: DELETED M.H. @ STA. 1+00.00 IN PLAN & PROFILE, ADDED M.H. @ STA. 1+78.30

APPROVED: [Signature] OFFICE OF COUNTY ENGINEER
COUNTY SANITATION DISTRICT

REVISION NO. 1 DATE
PAGE 2: DELETED M.H. @ STA. 1+00.00 IN PLAN & PROFILE, ADDED M.H. @ STA. 1+78.30

APPROVED: [Signature] REGISTERED ENGINEER

REVISION NO. 2 DATE 9-25-85
PAGE 1: REVISED INDEX MAP
PAGE 3: ABANDON EXIST. 8" V.C.P. SEWER & M.H. & REVISED ALIGNMENT FROM STA. 7+68.74 TO STA. 10+60.40

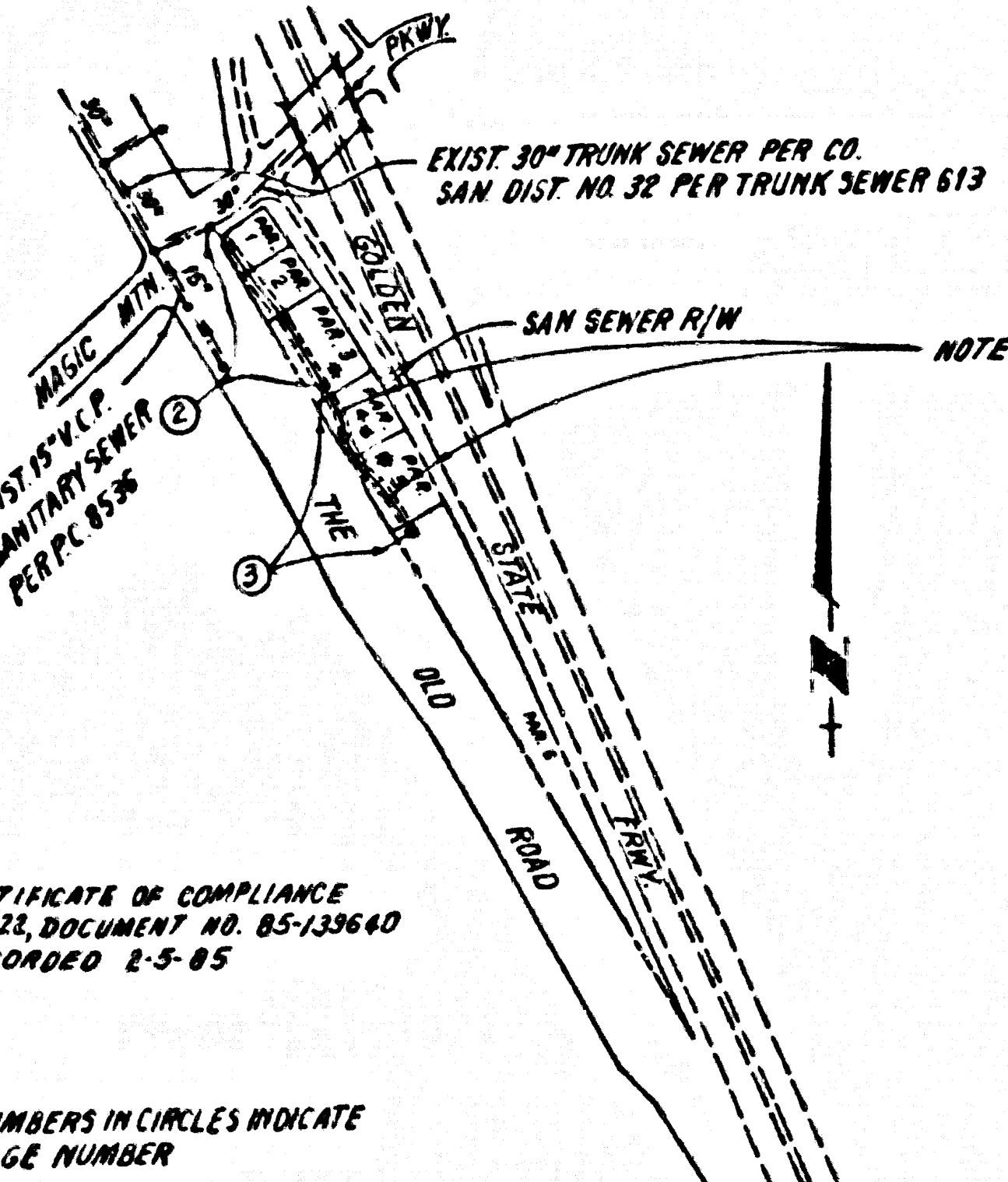
APPROVED: [Signature] DEPARTMENT OF PUBLIC WORKS

NO CONNECTION FOR THE DISPOSAL OF INDUSTRIAL WASTES SHALL BE MADE TO SEWERS SHOWN ON THESE DRAWINGS UNTIL A PERMIT FOR INDUSTRIAL WASTEWATER DISCHARGE HAS BEEN ISSUED BY THE SANITATION DISTRICTS FOR SAID CONNECTION.
BEFORE BREAKING INTO OR CONSTRUCTION ON A COUNTY SANITATION DISTRICT SEWER AND PRIOR TO FINAL ACCEPTANCE OF THE PROJECT, SANITATION DISTRICT INSPECTOR SHALL BE NOTIFIED BY PHONE 962-8605 SO THAT REQUIRED INSPECTION CAN BE MADE.

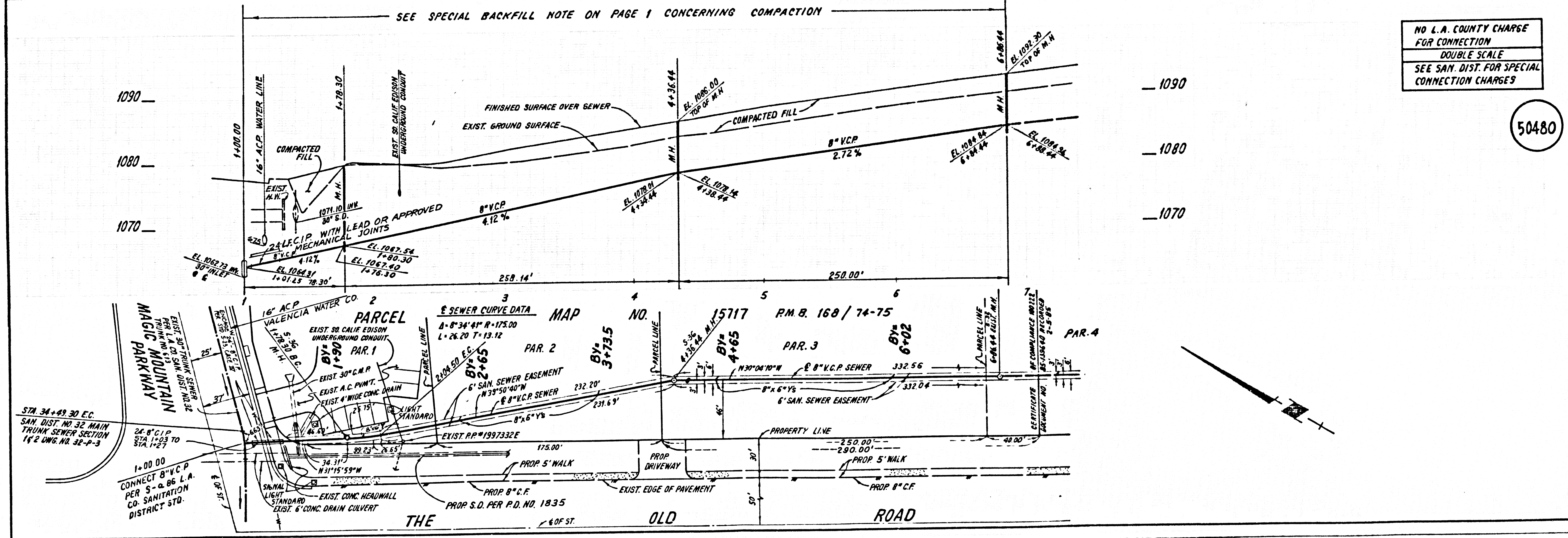
- GENERAL NOTES:
- ELEVATIONS ARE IN FEET ABOVE U.S.C. & G.S. SEA LEVEL DATUM OF 1929
 - NO MODIFICATIONS SHALL BE MADE IN THESE PLANS WITHOUT THE APPROVAL OF THE COUNTY ENGINEER
 - NO REPRESENTATIVE OF THE COUNTY ENGINEER WILL SURVEY OR LAY OUT ANY PORTION OF THE WORK
 - GRADES TO WHICH THIS IMPROVEMENT IS TO BE CONSTRUCTED ARE SHOWN ON PLANS AND PROFILES. GRADE POINTS FOR TYPICAL CURVES, CENTER LINE OF STREETS OR CENTER LINE OF ALLEYS ARE SHOWN BY CIRCLES ON PROFILES AT ALL POINTS BETWEEN DESIGNATED POINTS. THE GRADE SHALL BE ESTABLISHED SO AS TO CONFORM TO A STRAIGHT LINE DRAWN BETWEEN SAID DESIGNATED POINTS
 - THE PRIVATE ENGINEER SHALL FURNISH THE COUNTY ENGINEER WITH GRADE SHEETS AND STATIONING FOR ALL HOUSE LATERALS AND 12" OR 16" OR 20" OR 24" BRANCHES AND SHALL PROVIDE STAKES FOR THEM AT THEIR PROPER LOCATIONS WITH STATIONING IN FEET AND INCHES. ALL HOUSE LATERALS SHALL BE CONSTRUCTED IN A STRAIGHT ALIGNMENT AT RIGHT ANGLES FROM THE MAIN LINE SEWER EXCEPT AS SHOWN ON THE PLANS. HOUSE LATERALS FROM CHIMNEYS SHALL NOT HAVE AN ANGLE OF LESS THAN 45° WITH THE MAIN LINE SEWER. ANY CHANGE IN ALIGNMENT SHALL BE REQUESTED IN WRITING BY THE PRIVATE ENGINEER.
 - THE PRIVATE ENGINEER SHALL FURNISH THE HOUSE LATERAL DEPTH AT THE PROPERTY LINE BELOW THE TOP OF CURB ELEVATION FOR EACH HOUSE LATERAL ON THE GRADE SHEET
 - BEFORE WORK CAN BE STARTED THE CONTRACTOR MUST OBTAIN A PERMIT TO EXCAVATE IN COUNTY STREETS FROM THE L.A. COUNTY ROAD DEPT., DISTRICT OFFICE NO. 5 AND PAY A FEE TO THE COUNTY ENGINEER 500 S. VERMONT AVENUE, LOS ANGELES, CA 90005 TO COVER THE COST OF CONSTRUCTION INSPECTION AND RECORD PLANS
 - IF WORK IS TO BE DONE IN A STATE HIGHWAY A PERMIT MUST BE OBTAINED FROM THE STATE OF CALIFORNIA DIVISION OF HIGHWAYS, 170 SOUTH SPRING STREET, LOS ANGELES, CALIFORNIA
 - APPROVAL OF THIS PLAN BY THE COUNTY OF LOS ANGELES DOES NOT CONSTITUTE A REPRESENTATION AS TO THE ACCURACY OF THE LOCATION OF OR THE EXISTENCE OR NON-EXISTENCE OF ANY UNDERGROUND UTILITY PIPE OR STRUCTURE WITHIN THE LIMITS OF THIS PROJECT. THIS NOTE APPLIES TO ALL PAGES
 - REFER TO SECTION 11041 OF THE STANDARD SPECIFICATIONS REGARDING SAFETY ORDERS
 - PRIOR TO THE RESUME OF THE REQUIRED SEWER CONSTRUCTION PERMIT THE CONTRACTOR SHALL OBTAIN AND FILE WITH THE COUNTY ENGINEER COPIES OF A PERMIT TO EXCAVATE IN COUNTY STREETS FROM THE LOS ANGELES COUNTY ROAD DEPARTMENT AND PERMIT FOR EXCAVATIONS AND TRENCHES WITHIN THE STATE OF CALIFORNIA DIVISION OF INDUSTRIAL SAFETY AND CERTIFICATE OF BONDERS COMPENSATION INSURANCE WITH THE DEPARTMENT OF COUNTY ENGINEER 500 SOUTH VERMONT FROM THE LOS ANGELES CALIFORNIA BOND NAMED AS THE CERTIFICATE HOLDER TO BE NOTIFIED 30 DAYS PRIOR TO CANCELLATION OF POLICY

- CONSTRUCTION NOTES:
- WORK SHALL BE CONSTRUCTED ACCORDING TO THE STANDARD SPECIFICATIONS FOR PUBLIC WORKS CONSTRUCTION, 1982 EDITION WITH 1983 SUPPLEMENTS AND COUNTY ENGINEER SPECIAL PROVISIONS FOR THE CONSTRUCTION OF SANITARY SEWERS DATED SEPT. 21, 1976 AND SHALL BE PROSECUTED ONLY IN THE OFFICE OF THE COUNTY ENGINEER
 - THE CONTRACTOR SHALL NOTIFY THE ENVIRONMENTAL DEVELOPMENT DIVISION BY TELEPHONE 726 2106 AT LEAST TWENTY FOUR HOURS BEFORE STARTING ANY WORK UNDER THIS CONTRACT
 - HOUSE LATERALS TO BE CONSTRUCTED WITH INVERTS AT PROPERTY LINE 8 FEET BELOW CURB GRADE EXCEPT AS NOTED
 - WYE OR TEE BRANCHES MAY BE USED FOR CONNECTIONS TO MAINLINE SEWERS EXCEPT AS NOTED
 - ALL STRUCTURES SHALL BE EITHER BRICK MANHOLES PER 5.3 OR PRECAST CONCRETE MANHOLES PER 5.36 EXCEPT AS NOTED
 - PROVIDE STAKES ON THE PROPERTY LINE OR PROPERTY LINES PRODUCED AT RIGHT ANGLES TO THE SEWER LINE AT THE CENTER LINE OF EACH MANHOLE
 - MANHOLE TOPS IN UNIMPROVED RIGHTS OF WAY TO BE SIX INCHES ABOVE FINISHED GRADE
 - WETTED CLAY PIPE JOINTS SHALL BE TYPE "D" OR "B" PER STANDARD SPECIFICATIONS SECTION 208.2
 - IF A POWER POLE IS WITHIN THREE FEET OF THE SEWER THE SEWER SHALL BE ENCASED PER 5.23 CASE II TWO FEET ON EACH SIDE FROM THE POINT OF INTERFERENCE
 - IF DURING THE COURSE OF CONSTRUCTION IT IS DETERMINED THAT THERE IS LESS THAN FOUR FEET OF COVER OVER THE TOP OF A MAIN LINE OR HOUSE LATERAL SEWER WHICH IS NOT INDICATED ON THE PLANS, THE PIPE SHALL BE ENCASED PER 5.23 CASE II UNLESS OTHERWISE APPROVED BY THE COUNTY ENGINEER
 - ALL JOINTS BETWEEN CAST IRON PIPE AND WETTED CLAY PIPE SHALL BE MADE WITH A RUBBER SLEEVE JOINT TYPE "C" OR "D" WITH BUSHING IF NECESSARY PER STANDARD SPECIFICATIONS SECTION 208.2
 - SEWERS TO BE TESTED FOR LEAKAGE PER SECTION 208.1 OF THE STANDARD SPECIFICATIONS AND SPECIAL PROVISIONS
 - RESURFACE ALL TRENCHES WITHIN PAVED AREAS TO MEET L.A. COUNTY ROAD DEPT. OR CALIFORNIA STATE HIGHWAY REQUIREMENTS IN ACCORDANCE WITH PERMITS
 - FULL COMPLIANCE WITH SECTION 135.19 OF THE SPECIAL PROVISIONS WILL BE REQUIRED FOR BACKFILL IN STREETS. CERTIFICATION OF BACKFILL COMPACTION AND SAND EQUIVALENTS BY A QUALIFIED INDEPENDENT TESTING LABORATORY SHALL BE PROVIDED BY THE PERMITTEE PRIOR TO THE ISSUANCE OF A CERTIFICATE OF PARTIAL ACCEPTANCE
 - SPECIAL BACKFILL IN PAVEMENT CONSTRUCTION: (A) BACKFILL TRENCH AND REPLAC: OTHER PARTS BY AIR TO ACHIEVE THE MAXIMUM OR FINISHED GRADES AND SLOPES SHOWN ON THE DRAWINGS OR AS APPROVED FOR THIS DEVELOPMENT BY THE PLUMBING AND SAFETY DIVISION. (B) ALL BACKFILL AND EARTH REPAIRS SHALL BE COMPACTED TO A MINIMUM OF 90% OF MAXIMUM DENSITY PER ASTM METHOD OF TEST D1557 AS MODIFIED. ACCEPTABLE CERTIFICATION OF SUCH COMPACTION SHALL BE SUBMITTED TO THE ENVIRONMENTAL DEVELOPMENT DIVISION

B.M. C.L. 1774 ELEV. 1078.815
RD. B.M. TAG S. C.B. TRAFFIC ISL. 15 FT. W
Q.L. S. RONY. MAGIC MT. PKWY. 7.70 FT. W. Q.L.
GOLDEN STATE FRWY. BRIDGE 853-1625
NEWHALL QUAD. 19 78



INDEX MAP
SCALE: 1"=400'
P.C. 10193
PARCEL MAP NO. 15717

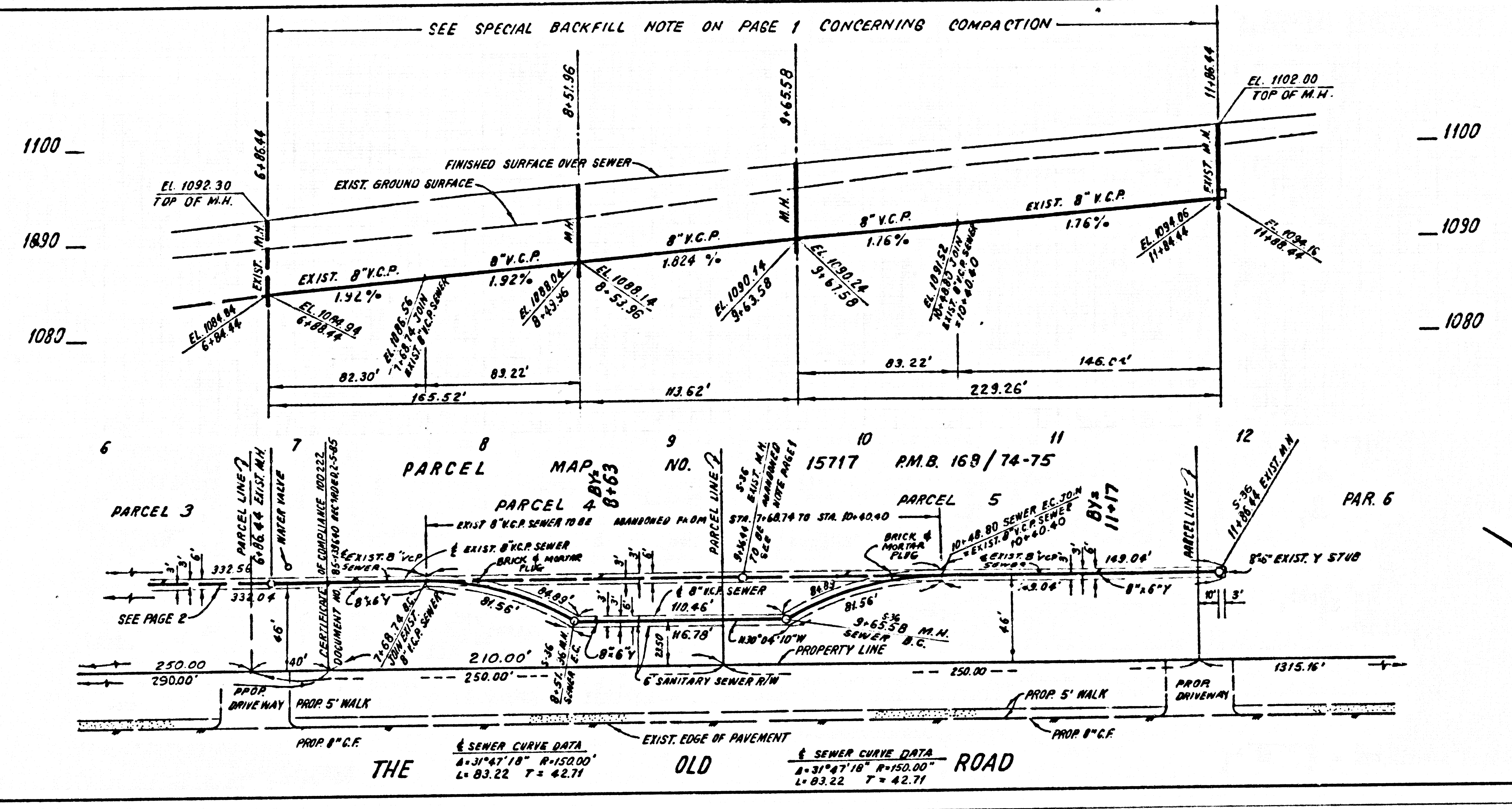


NO L.A. COUNTY CHARGE FOR CONNECTION
DOUBLE SCALE
SEE SAN. DIST. FOR SPECIAL CONNECTION CHARGES

50480

NO L.A. COUNTY CHARGE FOR CONNECTION
DOUBLE SCALE
SEE SAN. DIST. FOR SPECIAL CONNECTION CHARGES

50481



ER101 39