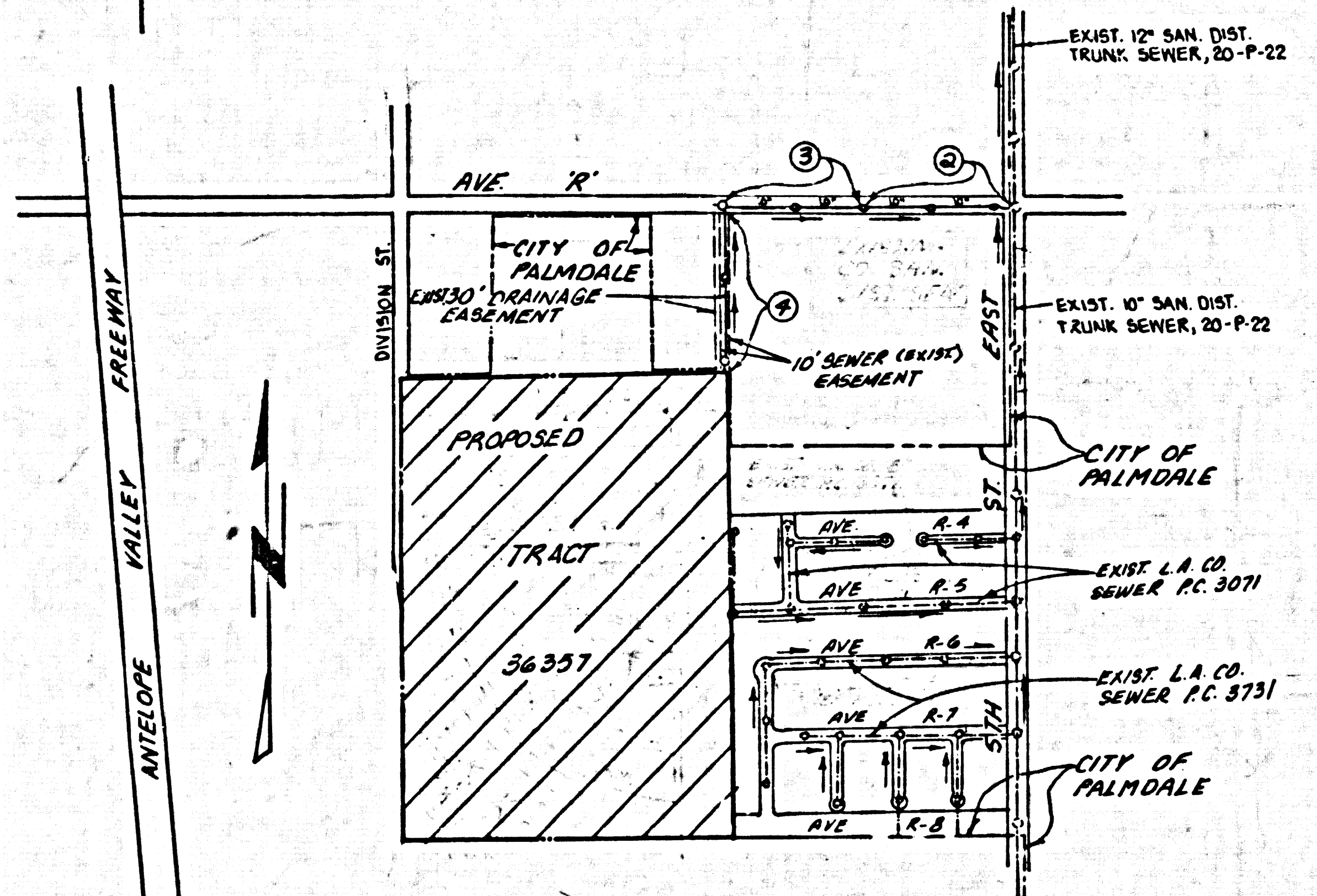


B.M. C.I. 112 ELEV. 2717.442  
 C.S. MON. IN WELL DN 14 IN. @  
 C.I.L. INT. AVE. R & DIVISION ST.  
 MKD. (27 26 34 35 TGN R12W)  
 PALMDALE QUAD. 19 20 USE N. EDGE

DOUBLE SCALE



INDEX MAP  
 P.C. 10194  
 SCALE: 1" = 600'  
 AVE. "R" & R/W

NOTE: NUMBERS IN CIRCLES INDICATE PAGE NUMBER.

GENERAL NOTES:

- ELEVATIONS ARE IN FEET ABOVE U.S.C. & G.S. SEA LEVEL DATUM OF 1929.
- NO REVISIONS SHALL BE MADE IN THESE PLANS WITHOUT THE APPROVAL OF THE COUNTY ENGINEER.
- NO REPRESENTATIVE OF THE COUNTY ENGINEER WILL BE ON SITE AT ANY POINT OF THE WORK.
- CHANGES TO WHICH THIS IMPROVEMENT IS TO BE CONSTRUCTED ARE SHOWN ON PLANS AND PROFILES. GRADE POINTS FOR TOP OF CURBS, CENTER LINE OF STREETS, OR CENTER LINE OF ALLEYS ARE SHOWN BY CIRCLES ON PROFILES. AT ALL POINTS BETWEEN DESIGNATED POINTS THE GRADE SHALL BE ESTABLISHED SO AS TO CONFORM TO A STRAIGHT LINE DRAWN BETWEEN SAID DESIGNATED POINTS.
- THE PRIVATE ENGINEER SHALL FURNISH THE COUNTY ENGINEER WITH GRADE SHEETS AND STATIONING FOR ALL HOUSE LATERALS AND "T" OR "Y" BRANCHES AND SHALL PROVIDE STAGES FOR THEM AT THEIR PROPER LOCATIONS WITH STATIONING PLAINLY MARKED. ALL HOUSE LATERALS SHALL BE CONSTRUCTED IN A STRAIGHT ALIGNMENT AT RIGHT ANGLES FROM THE MAIN LINE SEWER EXCEPT AS SHOWN ON THE PLANS. HOUSE LATERALS FROM CHIMNEYS SHALL NOT HAVE AN ANGLE OF LESS THAN 45° WITH THE MAIN LINE SEWER. ANY CHANGE IN ALIGNMENT SHALL BE REQUESTED IN WRITING BY THE PRIVATE ENGINEER.
- THE PRIVATE ENGINEER SHALL FURNISH THE HOUSE LATERAL SUPPLY AT THE PROPERTY LINE BELOW THE TOP OF CURB ELEVATION FOR EACH HOUSE LATERAL ON THE GRADE SHEET.
- BEFORE WORK CAN BE STARTED, THE CONTRACTOR MUST OBTAIN A PERMIT TO EXCAVATE IN COUNTY STREETS FROM THE L.A. COUNTY ROAD DEPT., DISTRICT OFFICE NO. 5 AND PAY A FEE TO THE COUNTY ENGINEER, R.R. 406, 530 S. VERNON ST., LOS ANGELES, CALIF. 90020 TO COVER THE COST OF CONSTRUCTION INSPECTION AND RECORD PLANS.
- IF WORK IS TO BE DONE IN A CITY HIGHWAY, A PERMIT MUST BE OBTAINED FROM THE CITY OF PALMDALE, DIVISION OF HIGHWAYS, 138 SOUTH SPRING STREET, LOS ANGELES, CALIFORNIA.
- APPROVAL OF THIS PLAN BY THE COUNTY OF LOS ANGELES DOES NOT CONSTITUTE A REPRESENTATION AS TO THE ACCURACY OF THE LOCATION OF OR THE EXISTENCE OR NON-EXISTENCE OF ANY UNDERGROUND UTILITY PIPE, OR STRUCTURE WITHIN THE LIMITS OF THIS PROJECT. THIS NOTE APPLIES TO ALL PAGES.
- REFER TO SECTION 7-18.4.3 OF THE STANDARD SPECIFICATIONS, REGARDING SAFETY ORDERS.
- PRIOR TO THE ISSUANCE OF THE REQUIRED SEWER CONSTRUCTION PERMIT, THE CONTRACTOR SHALL OBTAIN FILE WITH THE COUNTY ENGINEER COPIES OF A PERMIT TO EXCAVATE IN THE COUNTY STREET FROM THE L.A. CO. DEPT. 4 PERMIT FOR EXCAVATIONS & TRENCHES FROM THE STATE OF CALIFORNIA, DIVISION OF INDUSTRIAL SAFETY AND A CERTIFICATE OF WORKERS COMPENSATION INSURANCE WITH THE DEPT. OF CO. ENGINEER, 550 S. VERNON ST., ROOM 406, L.A. 90020, NAMED AS THE CERTIFICATE HOLDER TO BE NOTIFIED 30 DAYS PRIOR TO CANCELLATION OF PROJECT.

CONSTRUCTION NOTES:

- WORK SHALL BE CONSTRUCTED ACCORDING TO THE STANDARD SPECIFICATIONS FOR PUBLIC WORKS CONSTRUCTION FIRST EDITION WITH 1983 SUPPLEMENTS AND COUNTY ENGINEER SPECIAL PROVISIONS FOR THE CONSTRUCTION OF SANITARY SEWERS DATED 11-21-83 AND SHALL BE CONDUCTED ONLY IN THE PRESENCE OF THE COUNTY ENGINEER.
- THE CONTRACTOR SHALL NOTIFY THE SANITATION DISTRICT BY TELEPHONE 758-2541 AT LEAST TWENTY-FOUR HOURS BEFORE STARTING ANY WORK UNDER THIS CONTRACT.
- HOUSE LATERALS TO BE CONSTRUCTED WITH INVERTS AT PROPERTY LINE 4 FEET BELOW CURB GRADE EXCEPT AS NOTED.
- WYE OR THE BRANCHES MAY BE USED FOR CONNECTIONS TO MAINLINE SEWERS EXCEPT AS NOTED.
- ALL STRUCTURES SHALL BE BUILT BRICK MANHOLES PER 5-6 PERCENT CONCRETE MANHOLES PER 5-6, EXCEPT AS NOTED.
- PROVIDE STAGES ON THE PROPERTY LINE OR PROPERTY LINES PROVIDED AT RIGHT ANGLES TO THE SEWER LINE AT THE CENTER LINE OF EACH MANHOLE.
- MANHOLES FOR USE IN UNIMPROVED AREAS OF WAYS TO BE SIX INCHES ABOVE FINISHED GRADE.
- VENTED CLAY PIPE JOINTS SHALL BE TYPE "D" JOINT PER STANDARD SPECIFICATIONS SECTION 306-2.
- IF A POWER POLE IS WITHIN THREE FEET OF THE SEWER, THE SEWER SHALL BE ENCASED, PER 5-23, CASE 2, TWO FEET ON EACH SIDE FROM THE POINT OF INTERFERENCE.
- IF DURING THE COURSE OF CONSTRUCTION IT IS DETERMINED THAT THERE IS LESS THAN FOUR FEET OF COVER OVER THE TOP OF A MAIN LINE OR HOUSE LATERAL V.C.P. SEWER WHICH IS NOT INDICATED ON THE PLANS, THE PIPE SHALL BE ENCASED PER 5-23, CASE 2, UNLESS OTHERWISE APPROVED BY THE COUNTY ENGINEER.
- ALL JOINTS BETWEEN CLAY PIPE AND WYE AND WYE SHALL BE MADE WITH A RUBBER GASKET JOINT, TYPE "C" OR "D", WITH RUBBER IF NECESSARY PER STANDARD SPECIFICATIONS, SECTION 306-2.
- SEWERS TO BE TESTED FOR LEAKAGE PER SECTION 306-6 OF THE STANDARD SPECIFICATIONS AND SPECIAL PROVISIONS.
- RESURFACE ALL TRENCHES WITHIN PAVED AREAS TO MEET THE COUNTY OF CALIFORNIA STATE HIGHWAY REQUIREMENTS IN ACCORDANCE WITH PERMITS.
- ALL COMPLIANCE WITH SECTION 306-8.5 OF THE SPECIAL PROVISIONS WILL BE REQUIRED FOR BACKFILL IN STREETS. CERTIFICATION OF BACKFILL COMPACTION AND SAND EQUIVALENTS BY A QUALIFIED, REGISTERED TESTING LABORATORY SHALL BE PROVIDED BY THE PERMITTEE PRIOR TO THE RESUMPTION OF A CERTIFICATE OF PARTIAL ACCEPTANCE.
- SPECIAL BACKFILL IN EASEMENT CONSTRUCTION: (A) BACKFILL TRENCH AND REPLACE OTHER EARTH SO AS TO ACHIEVE THE NATURAL OR FINISHED GRADES AND SLOPES SHOWN ON THE GRADING PLAN APP. FOR THIS DEVELOP. BY THE BUILD. & SAFETY DIV. (B) ALL BACKFILL & EARTH REPLACED SHALL BE COMPACTED TO A MIN. OF 90% OF MAX. DENSITY PER A.S.T.M. STD. METHOD OF TEST D 1558-57 AS MODIFIED ACCORD. COST OF SOIL COMPACTOR SHALL BE SUBMITTED TO THE ENVIRONMENTAL DEVELOPMENT DIVISION.

NO CONNECTION FOR THE DISPOSAL OF INDUSTRIAL WASTES SHALL BE MADE TO SEWERS SHOWN ON THESE DRAWINGS UNTIL A PERMIT FOR INDUSTRIAL WASTEWATER DISCHARGE HAS BEEN ISSUED BY THE SANITATION DISTRICTS FOR SAID CONNECTION.

BEFORE BREAKING INTO OR CONSTRUCTION ON A COUNTY SANITATION DISTRICT SEWER AND PRIOR TO FINAL ACCEPTANCE OF THE PROJECT, SANITATION DISTRICT INSPECTOR SHALL BE NOTIFIED BY PHONE NUMBERING SO THAT REQUIRED INSPECTION CAN BE MADE. (805) 942-5757

PROFILE, ALIGNMENT AND GRADE OF  
**SANITARY SEWERS** PAGE 1

TO BE CONSTRUCTED IN  
 AVENUE "R" AND R/W. S/O AVENUE R

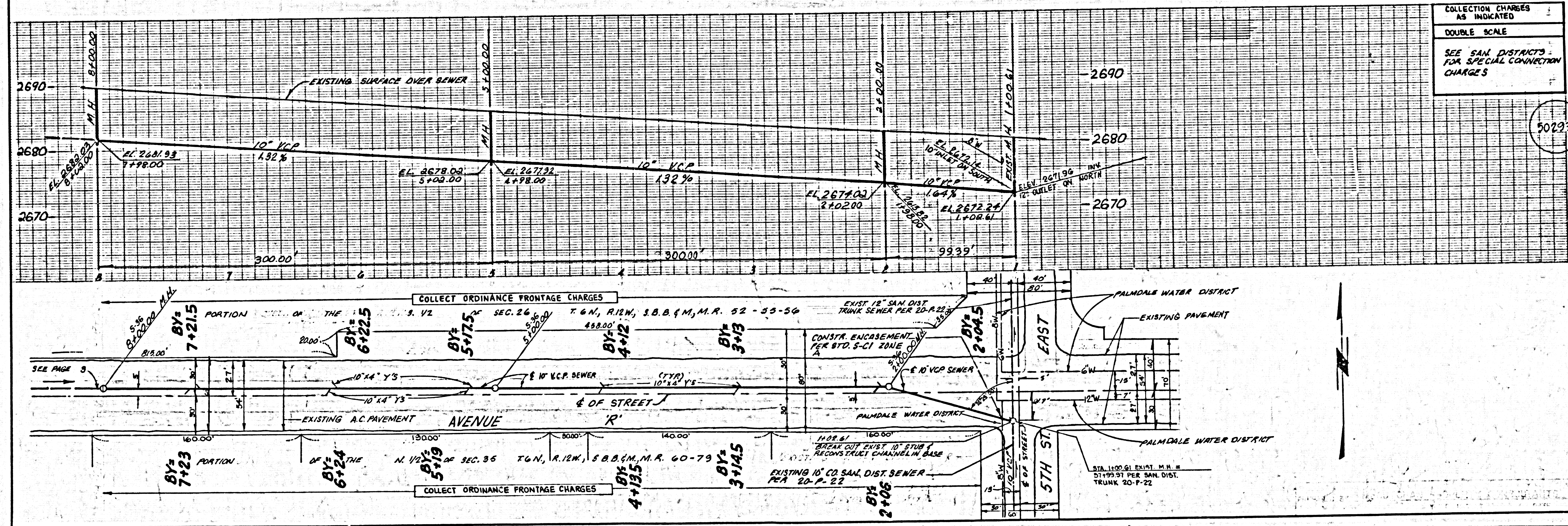
PRIVATE CONTRACT NO. 10194  
 C-A-145  
 W.S. 65  
 2 SHEETS, 4 PAGES  
 SCALE: VERT. 1" = 5' HORIZ. 1" = 100'  
 SEPT. 1983  
 PREPARED IN THE OFFICES OF  
**M'CUTCCHAN PROPERTY CONSULTANTS, 265 N. SAN GABRIEL BLVD. PASADENA, CALIF. 91107**  
 BY: *Alan J. Williams*  
 REG. C.E. No. 16723

THE FOLLOWING LATEST REVISED STANDARD PLANS ON FILE IN THE OFFICE OF THE COUNTY ENGINEER SHALL APPLY IN THE CONSTRUCTION OF THIS PROJECT.

MINIMUM PUBLIC SAFETY REQUIREMENTS	5-7
MINIMUM PUBLIC SAFETY REQUIREMENTS	5-8
STANDARD MANHOLE STEP	5-17
REWORKING FOR SEWER PIPE	5-22
CALLING AND RECALLING	5-24
WYE ON THE SUPPORT	5-26
ALLOWABLE TRENCH WIDTHS	5-28
LOCATING MANHOLES FROM PLANS AND COVER	5-29
NON-REINFORCED RECTANGULAR CONCRETE MANHOLE	5-30
RECTANGULAR SHALLOW MANHOLE	5-7
PRE-CAST CONC. ETC. BULLION MANHOLE	5-28
RECTANGULAR MANHOLE FRAME & COVER	5-16

COUNTY OF LOS ANGELES, CALIFORNIA  
 STEPHEN J. KOONCE, COUNTY ENGINEER, WALTER E. GARRISON, CHIEF ENGINEER  
 CO. SAN. DIST. NO. 10  
 APPROVED: *Walter E. Garrison* (DATE) *Stephen J. Koonce* (DATE)  
 CHECKED BY: *Alan J. Williams* (DATE) 11-2-83  
 REG. C.E. No. 17911  
 LANCASTER BLDG. DIST. 9

P.C. 10194 PAGE 2

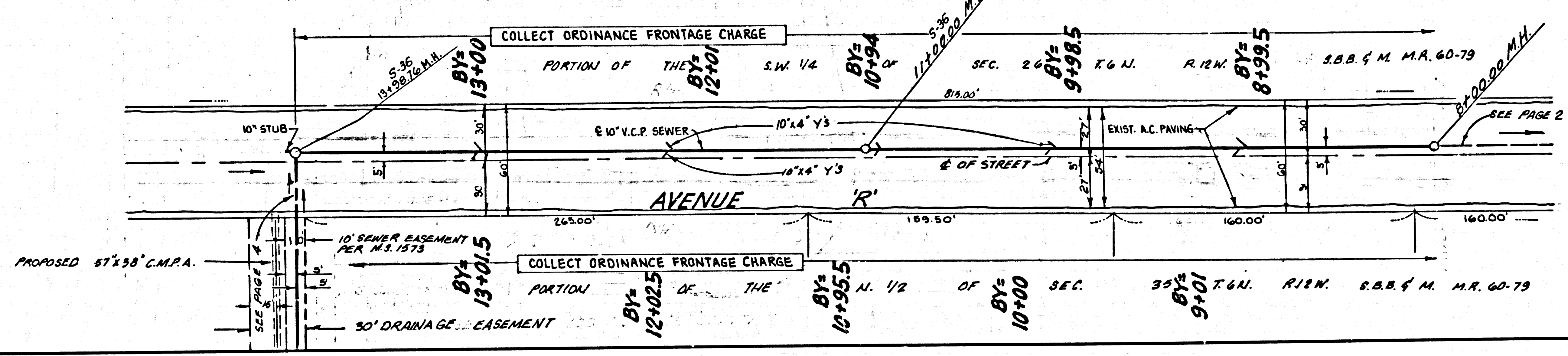
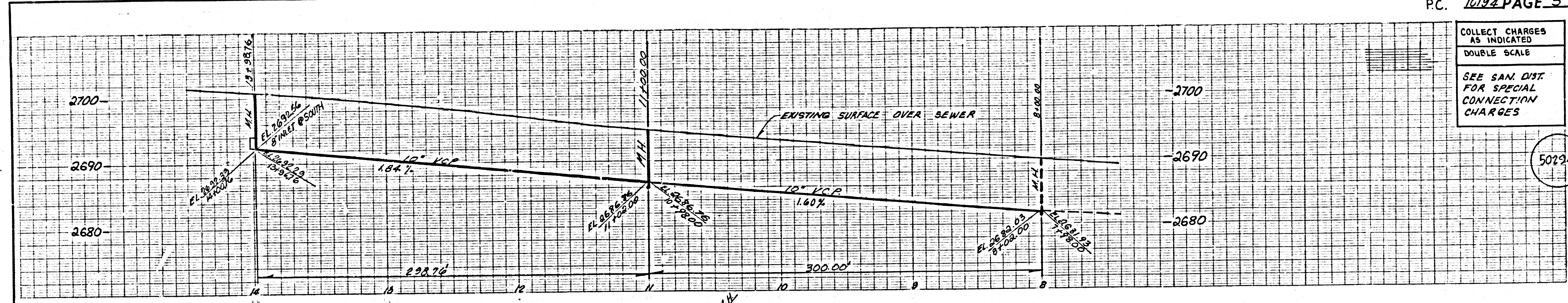


COLLECTION CHARGES AS INDICATED  
 DOUBLE SCALE  
 SEE SAN. DISTRICTS FOR SPECIAL CONNECTION CHARGES

1010194 W/S 2 P. 2

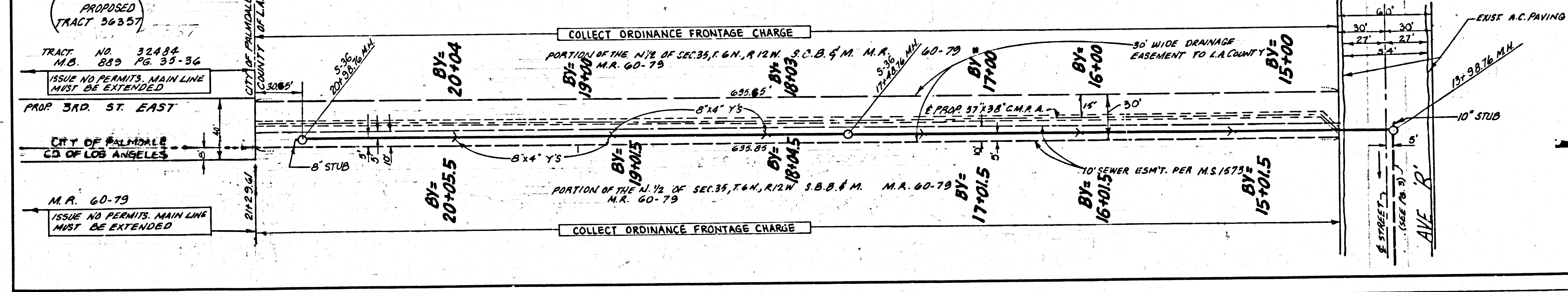
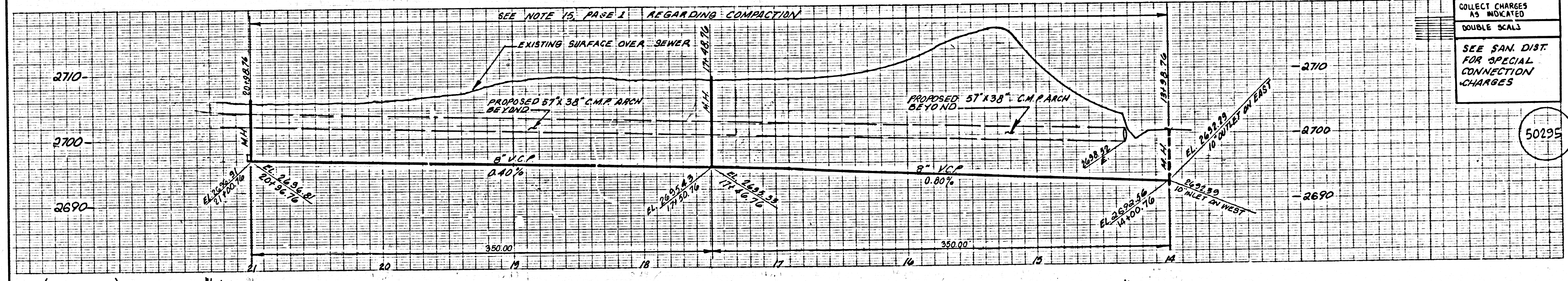
COLLECT CHARGES AS INDICATED  
DOUBLE SCALE  
SEE SAN. DIST. FOR SPECIAL CONNECTION CHARGES

50294



COLLECT CHARGES AS INDICATED  
DOUBLE SCALE  
SEE SAN. DIST. FOR SPECIAL CONNECTION CHARGES

50295



S 16101 29 MAR 2 P.A. SNA