

10534
 BOSOI ON 09 E 12 H 22 8 SI-9 EVA

TO BE CONSTRUCTED IN
AVENUE R-12 & 55th STREET EAST
PRIVATE CONTRACT NO. 10208
 A-142
 W.S. 65
 2 SHEETS, 3 PAGES
 50534

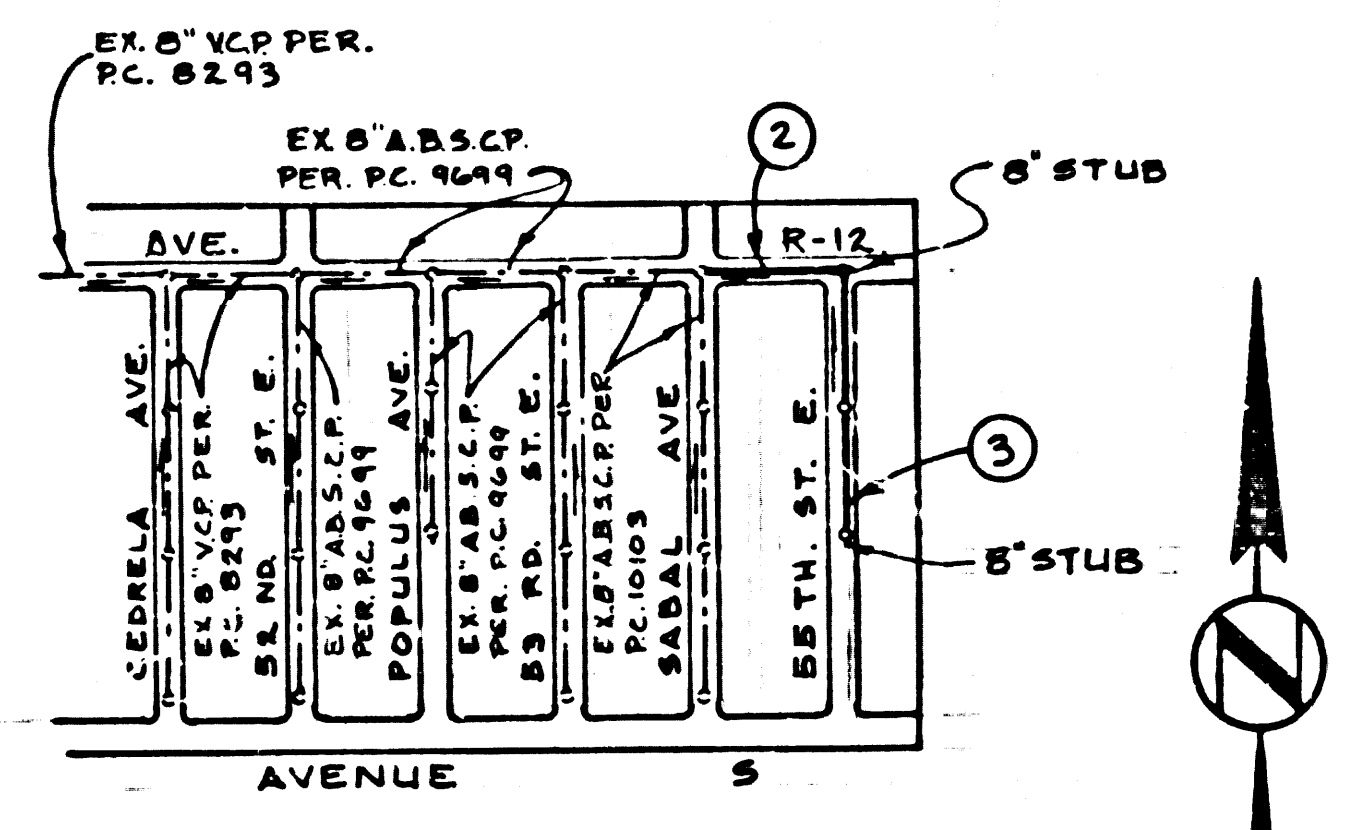
SCALE: VERT. 1" = 4'
 HORIZ. 1" = 40'
 DECEMBER, 1983
 PREPARED IN THE OFFICES OF
LOWELL FELT & ASSOCIATES, INC.
 247 E. PALMDALE BLVD., SUITE E
 PALMDALE, CALIF. 93550
 BY: *Lowell W. Felt* REG. C.E. NO. 8732

THE FOLLOWING LATEST REVISED STANDARD PLANS ON FILE IN THE OFFICE OF THE COUNTY ENGINEER SHALL APPLY IN THE CONSTRUCTION OF THIS PROJECT:

SEWER	5.1
MINIMUM PUBLIC SAFETY REQUIREMENTS	5.2
BRICE MANHOLE	5.3
STANDARD MANHOLE STEP	5.17
BEDDING FOR SEWER PIPE	5.21
CRACKING AND ENCASEMENT	5.22
WYE OR TEEL SURFACE	5.23
ALLOWABLE TRENCH WIDTHS	5.24
LOCKING MANHOLE FRAME AND COVER	5.25
NON REINFORCED PRECAST CONCRETE MANHOLE	5.26

COUNTY OF LOS ANGELES, CALIFORNIA
 STEPHEN J. KOONCE, COUNTY ENGINEER
 CHAEL'S W. CARRY, CHIEF ENGINEER
 CO. J.A. DIST. NO. 20
 APPROVED: *Mark L. Muegler* 2/25/84
 APPROVED: *Stephen J. Koonce* 2/25/84
 CHECKED: *Ralph D. Daint* 2/25/84
 REG. C.E. NO. 16873
 PALMDALE BLDG. DIST. 8.1

B.M. CL. 2617 ELEV. 2674.19
 C.S.D.M. MON. 6 IN UP @ SW COR.
 AVE. 3 + 47 TH. ST. E. 95 FT.
 5 + 61 FT. W. C/L INT. MKD.
 (B.M. 100 # 185) ANGLE IRON
 MARKER POST 3 FT. UP 2 FT. 5
PALMDALE QUAD. 1973.



INDEX MAP
 SCALE: 1" = 600'
 P.C. 10208
 SEWER IN AVE. R-12 & 55 TH. ST. E.

NOTE: NUMBERS IN CIRCLES INDICATE PAGE NUMBER.

CONSTRUCTION NOTES: (CONT'D)

- WYE BRANCHES ONLY MAY BE USED FOR CONNECTIONS TO MAINLINE SEWER IF A.B.S.C.P. IS USED.
- ALL JOINTS BETWEEN CAST IRON PIPE & A.B.S.C.P. SHALL BE MADE WITH APPROVED FITTINGS.
- FULL COMPLIANCE WITH PART III OF THE SPECIAL PROVISIONS IS REQUIRED FOR THE INSTALLATION OF A.B.S. COMPOSITE PIPE.
- MANHOLE WATER STOP BASKETS & CLAMPS ARE REQUIRED FOR THE CONNECTION OF A.B.S. COMPOSITE PIPE TO MANHOLE STRUCTURES.
- A.B.S. SOLID WALL PIPE MUST BE USED FOR WYE HOUSE LATERAL CONNECTIONS TO A.B.S. COMPOSITE MAIN LINE SEWER PIPE.
- A.B.S. COMPOSITE PIPE SHALL BE BEDDED IN CONFORMANCE WITH THE TABLE IN SECTION 8-3.1 OF PART III OF THE SPECIAL PROVISIONS.
- 3-DEGREE DEFLECTION COMPLEX SHALL BE USED TO ACCOMPLISH RADIUS OF CURVATURE LESS THAN 380'.

NO CONNECTION FOR THE DISPOSAL OF INDUSTRIAL WASTES SHALL BE MADE TO SEWERS SHOWN ON THESE DRAWINGS UNTIL A PERMIT FOR INDUSTRIAL WASTEWATER DISCHARGE HAS BEEN ISSUED BY THE SANITATION DISTRICTS FOR SAID CONNECTION.

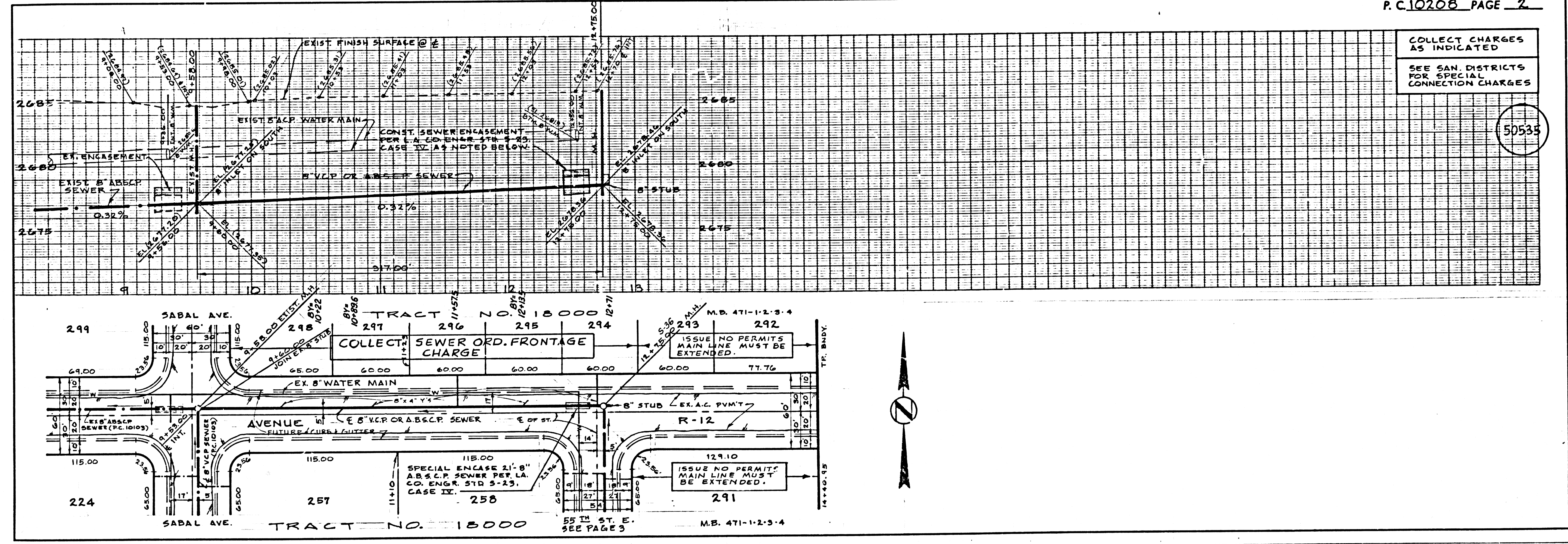
BEFORE BREAKING INTO OR CONSTRUCTION ON A COUNTY SANITATION DISTRICT SEWER AND PRIOR TO FINAL ACCEPTANCE OF THE PROJECT, SANITATION DISTRICT INSPECTOR SHALL BE NOTIFIED BY PHONE (805) 942-5757 SO THAT REQUIRED INSPECTION CAN BE MADE.

GENERAL NOTES:

- ELEVATIONS ARE IN FEET ABOVE U.S.C. & G.S. SEA LEVEL DATUM OF 1929.
- NO REVISIONS SHALL BE MADE IN THESE PLANS WITHOUT THE APPROVAL OF THE COUNTY ENGINEER.
- NO REPRESENTATIVE OF THE COUNTY ENGINEER WILL SURVEY OR LAY OUT ANY PORTION OF THE WORK.
- CHANGES TO WHICH THIS IMPROVEMENT IS TO BE CONSTRUCTED ARE SHOWN ON PLANS AND PROFILES. GRADE POINTS FOR TOP OF CURBS, CENTER LINE OF STREETS OR CENTER LINE OF ALLEYS ARE SHOWN BY CURVES ON PROFILES. AT ALL POINTS BETWEEN DESIGNATED POINTS THE GRADE SHALL BE ESTABLISHED SO AS TO CONFORM TO A STRAIGHT LINE DRAWN BETWEEN SAID DESIGNATED POINTS.
- THE PRIVATE ENGINEER SHALL FURNISH THE COUNTY ENGINEER WITH GRADE SHEETS AND STATIONING FOR ALL HOUSE LATERALS AND "T" OR "Y" BRANCHES AND SHALL PROVIDE STAKES FOR THEM AT THEIR PROPER LOCATIONS WITH STATIONING PLAINLY MARKED. ALL HOUSE LATERALS SHALL BE CONSTRUCTED IN A STRAIGHT ALIGNMENT AT RIGHT ANGLES FROM THE MAIN LINE SEWER EXCEPT AS SHOWN ON THE PLANS. HOUSE LATERALS FROM CHIMNEYS SHALL NOT HAVE AN ANGLE OF LESS THAN 45° WITH THE MAIN LINE SEWER. ANY CHANGE IN ALIGNMENT SHALL BE REQUESTED IN WRITING BY THE PRIVATE ENGINEER.
- THE PRIVATE ENGINEER SHALL FURNISH THE HOUSE LATERAL DEPTH AT THE PROPERTY LINE BELOW THE TOP OF CURB ELEVATION FOR EACH HOUSE LATERAL ON THE GRADE SHEET.
- BEFORE WORK CAN BE STARTED, THE CONTRACTOR MUST OBTAIN A PERMIT TO EXCAVATE IN COUNTY STREETS FROM THE L.A. COUNTY ROAD DEPT. DISTRICT OFFICE NO. 10 AND PAY A FEE TO THE COUNTY ENGINEER, 800 S. VERMONT AVE., LOS ANGELES, CALIF. 90020 TO COVER THE COST OF CONSTRUCTION INSPECTION AND RECORD PLANS.
- IF WORK IS TO BE DONE IN A STATE HIGHWAY, A PERMIT MUST BE OBTAINED FROM THE STATE OF CALIFORNIA, DIVISION OF HIGHWAYS, 120 SOUTH SPRING STREET, LOS ANGELES, CALIFORNIA.
- APPROVAL OF THIS PLAN BY THE COUNTY OF LOS ANGELES DOES NOT CONSTITUTE A REPRESENTATION AS TO THE ACCURACY OF THE LOCATION OF OR THE EXISTENCE OR NON-EXISTENCE OF ANY UNDERGROUND UTILITY PIPE, OR STRUCTURE WITHIN THE LIMITS OF THIS PROJECT. THIS NOTE APPLIES TO ALL PAGES.
- REFER TO SECTION 7-10.4.1 OF THE STANDARD SPECIFICATIONS, REGARDING SAFETY ORDERS.
- PRIOR TO THE ISSUANCE OF THE REQUIRED SEWER CONSTRUCTION PERMIT, THE CONTRACTOR SHALL OBTAIN A PERMIT TO EXCAVATE IN COUNTY STREETS FROM THE LOS ANGELES COUNTY ROAD DEPARTMENT, A PERMIT FOR EXCAVATIONS & TRENCHES FROM THE COUNTY ENGINEER, DIVISION OF INDUSTRIAL SAFETY & CERTIFICATE OF WORKER'S COMPENSATION INSURANCE WITH THE DEPARTMENT OF COUNTY ENGINEER, 800 S. VERMONT AVE., LOS ANGELES, CALIFORNIA, 90020. PERMIT NO. AS THE CERTIFICATE HOLDER TO BE NOTIFIED 30 DAYS PRIOR TO CANCELLATION OF POLICY.

CONSTRUCTION NOTES:

- WORK SHALL BE CONSTRUCTED ACCORDING TO THE STANDARD SPECIFICATIONS FOR PUBLIC WORKS CONSTRUCTION (1982 EDITION WITH 1983 SUPPLEMENTS) AND COUNTY ENGINEER SPECIAL PROVISIONS FOR THE CONSTRUCTION OF SANITARY SEWERS DATED SEPTEMBER, 21, 1978, AND SHALL BE PROSECUTED ONLY IN THE PRESENCE OF THE COUNTY ENGINEER.
- THE CONTRACTOR SHALL NOTIFY THE ENVIRONMENTAL DEVELOPMENT DIVISION BY TELEPHONE, (213) 758-2156, AT LEAST 24 HRS. BEFORE STARTING ANY WORK UNDER THIS CONTRACT.
- HOUSE LATERALS TO BE CONSTRUCTED WITH INVERTS AT PROPERTY LINE & FIT BELOW CURB GRADE EXCEPT AS NOTED.
- WYE OR TEEL BRANCHES MAY BE USED FOR CONNECTIONS TO MAINLINE SEWERS EXCEPT AS NOTED.
- ALL STRUCTURES SHALL BE EITHER BRICK MANHOLES PER 5.3 OR PRECAST CONCRETE MANHOLES PER 5.26, EXCEPT AS NOTED.
- PROVIDE STAKES ON THE PROPERTY LINE OR PROPERTY LINES PRODUCED AT RIGHT ANGLES TO THE SEWER LINE AT THE CENTER LINE OF EACH MANHOLE.
- MANHOLE FOR IN UNIMPROVED RIGHTS OF WAY TO BE SIX INCHES ABOVE FINISHED GRADE.
- VERTICAL CURVE POINTS SHALL BE 10' OR 15' PER STANDARD SPECIFICATIONS SECTION 300-3.
- IF A POWER POLE IS WITHIN THREE FEET OF THE SEWER, THE SEWER SHALL BE ENCASED, PER 5.23, CASE II, TWO FEET ON EACH SIDE FROM THE POINT OF INTERFERENCE.
- IF DURING THE COURSE OF CONSTRUCTION, IT IS DETERMINED THAT THERE IS LESS THAN FOUR FEET OF COVER OVER THE TOP OF A MAIN LINE OR HOUSE LATERAL V.C.P. SEWER WHICH IS NOT INDICATED ON THE PLANS, THE PIPE SHALL BE ENCASED PER 5.23, CASE II UNLESS OTHERWISE APPROVED BY THE COUNTY ENGINEER.
- ALL JOINTS BETWEEN CAST IRON PIPE AND VITRIFIED CLAY PIPE SHALL BE MADE WITH A RUBBER SLEEVE JOINT, TYPE "C" OR "D" WITH GASKETING IF NECESSARY PER STANDARD SPECIFICATIONS, SECTION 300-7.
- SEWERS TO BE TESTED FOR LEAKAGE PER SECTION 300-1.4 OF THE STANDARD SPECIFICATIONS AND SPECIAL PROVISIONS.
- RESURFACE ALL TRENCHES WITHIN PAVED AREAS TO MEET L.A. COUNTY ROAD DEPT. OF CALIFORNIA STATE HIGHWAY REQUIREMENTS IN ACCORDANCE WITH PERMITS.
- FULL COMPLIANCE WITH SECTION 300-1.8.B OF THE SPECIAL PROVISIONS WILL BE REQUIRED FOR BACKFILL IN STREETS. CERTIFICATION OF BACKFILL COMPACTION AND SAND EQUIVALENTS BY A QUALIFIED, REGISTERED TESTING LABORATORY SHALL BE PROVIDED BY THE PERMITTEE PRIOR TO THE ISSUANCE OF A CERTIFICATE OF ACCEPTANCE.

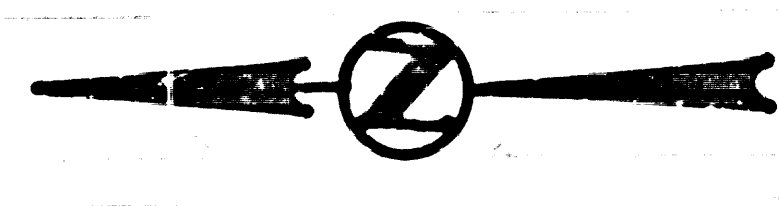
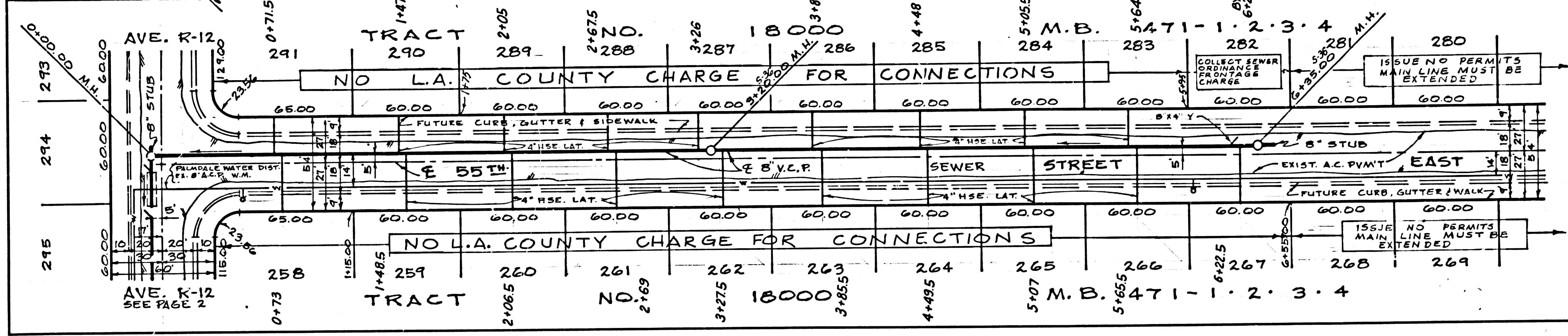
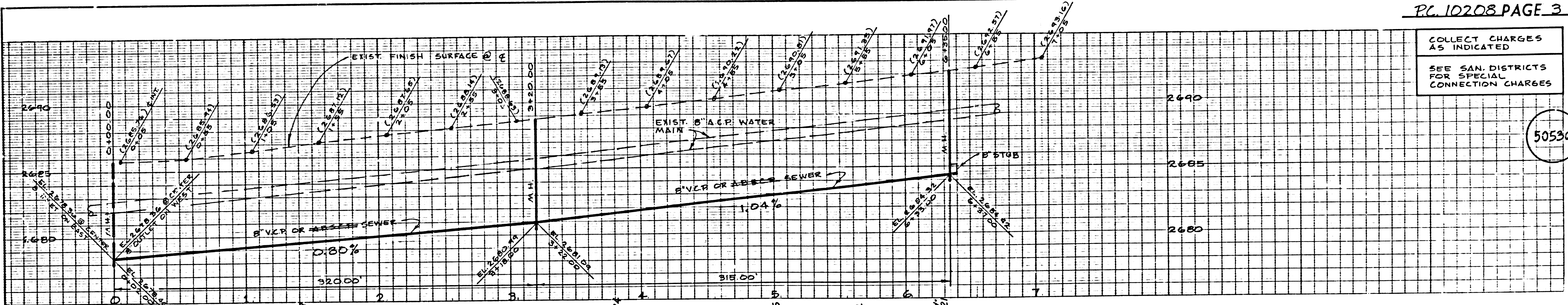


COLLECT CHARGES AS INDICATED
 SEE SAN. DISTRICTS FOR SPECIAL CONNECTION CHARGES

PC 10208 PAGE 3

COLLECT CHARGES AS INDICATED
SEE SAN. DISTRICTS FOR SPECIAL CONNECTION CHARGES

50536



PAGE

