

TO BE CONSTRUCTED IN  
**TRACT NO. 31601**

**PRIVATE CONTRACT NO. 10211**  
 A-517-17

2 SHEETS, 4 PAGES

SCALE: HORIZ. 1" = 40' VERT. 1" = 4'  
 DECEMBER, 1989

PREPARED IN THE OFFICES OF  
**SIKAND ENGINEERING ASSOCIATES**  
 15230 BURBANK BLVD., VAN NUYS  
 CALIFORNIA 91411 (213) 787-8550

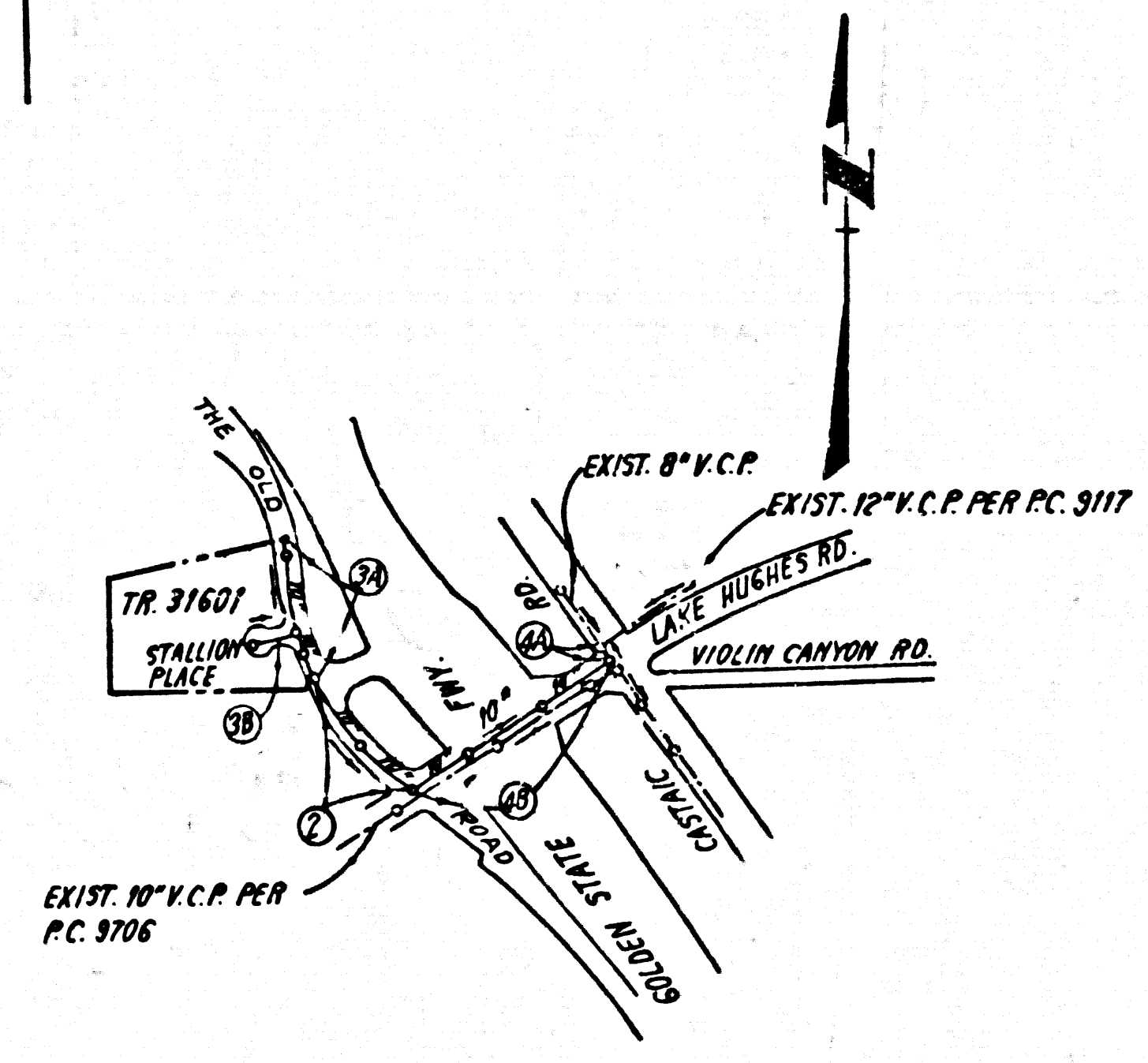
REG. C. E. No. 9272

50669

11501 PG 1031E ON TRACT

B.M. CL 4620 ELEV. 1162.850  
 L & M CTR. S.B. SET ON SW COR. LAKE  
 HUGHES RD & OLD RIDGE RTE  
 NEWHALL QUAD. 1978

REVISION NO. 1 DATE 8-20-84  
 1. PAGE 3, SECTION B-B  
 A. REVISED N.H. LOCATION, STA. 2+40.00 TO 2+23.35  
 B. REVISED LOCATION OF H.L. TO LOTS 3 AND 4  
 2. PAGE 4  
 A. SHOW EX. CONC. PAV'T. BETWEEN STA. 3+00 AND 3+80  
 B. REVISED N.H. LOCATION, STA. 3+50 TO STA. 4+40  
 C. CONST. VERTICAL CURVE, STA. 3+30 TO STA. 3+70  
 APPROVED *S. G. Hall*  
 OFFICE OF COUNTY ENGINEER I.R.E. NO. 33134



NUMBERS IN CIRCLES INDICATE  
 PAGE NUMBERS

**INDEX MAP**  
 SCALE: 1" = 600'  
 P.C. 10211  
 TR. NO. 31601

NO CONNECTION FOR THE DISPOSAL OF INDUSTRIAL WASTES  
 SHALL BE MADE TO SEWERS SHOWN ON THESE DRAWINGS UNTIL  
 A PERMIT FOR INDUSTRIAL WASTEWATER DISCHARGE HAS BEEN  
 ISSUED BY THE SANITATION DISTRICTS FOR SAID CONNECTION.  
 BEFORE BREAKING INTO OR CONSTRUCTION ON A COUNTY  
 SANITATION DISTRICT SEWER AND PRIOR TO FINAL  
 ACCEPTANCE OF THE PROJECT, SANITATION DISTRICT  
 INSPECTOR SHALL BE NOTIFIED BY PHONE 962-8605,  
 SO THAT REQUIRED INSPECTION CAN BE MADE.

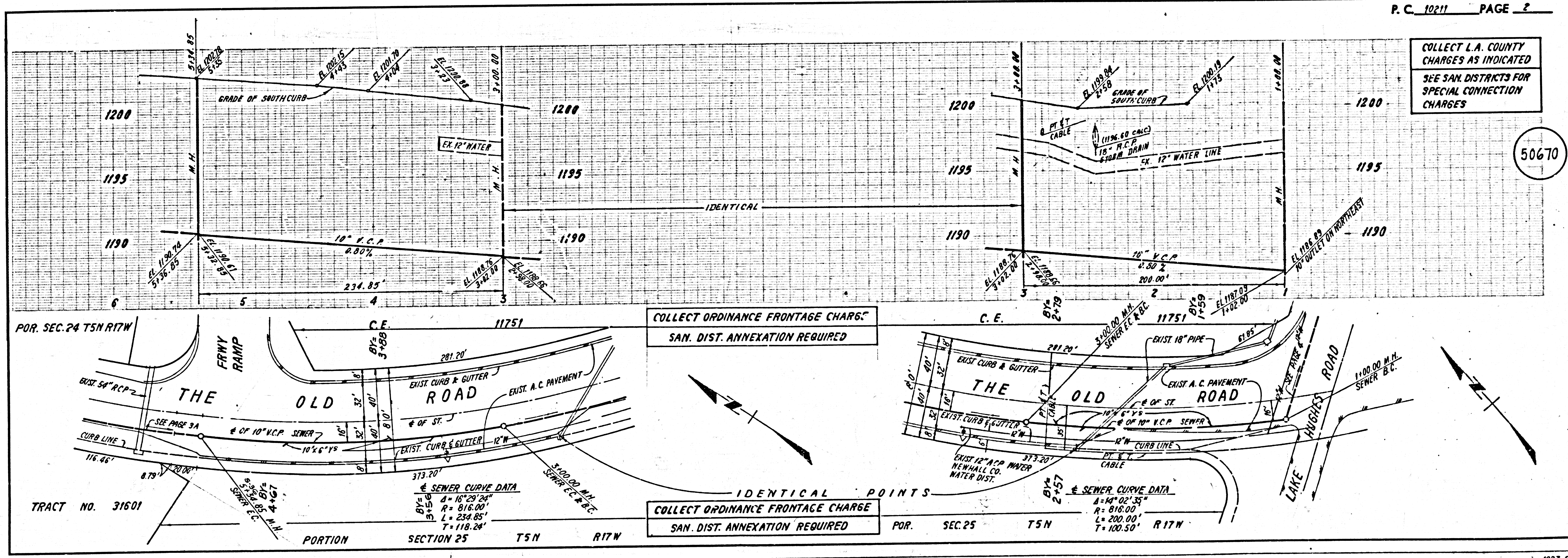
- GENERAL NOTES:**
- ELEVATIONS ARE IN FEET ABOVE U.S.C. & G.S. SEA LEVEL DATUM OF 1989
  - NO REVISIONS SHALL BE MADE IN THESE PLANS WITHOUT THE APPROVAL OF THE COUNTY ENGINEER
  - NO REPRESENTATIVE OF THE COUNTY ENGINEER WILL SURVEY OR LAY OUT ANY PORTION OF THE WORK
  - GRADES TO WHICH THE IMPROVEMENT IS TO BE CONSTRUCTED ARE SHOWN ON PLANS AND PROFILES. GRADE POINTS FOR TOP OF CURBS, CENTER LINE OF STREET, OR CENTER LINE OF ALLEYS ARE SHOWN ON PROFILES AT ALL POINTS BETWEEN DESIGNATED POINTS THE GRADE SHALL BE ESTABLISHED SO AS TO CONFORM TO A STRAIGHT LINE DRAWN BETWEEN SAID DESIGNATED POINTS
  - THE PRIVATE ENGINEER SHALL FURNISH THE COUNTY ENGINEER WITH GRADE SHEETS AND STATIONING FOR ALL HOUSE LATERALS AND "T" OR "Y" BRANCHES AND SHALL PROVIDE STAKES FOR THEM AT THEIR PROPER LOCATIONS WITH STATIONING, PLAINLY MARKED ALL HOUSE LATERALS SHALL BE CONSTRUCTED ON A STRAIGHT ALIGNMENT AT RIGHT ANGLES FROM THE MAIN LINE SEWER EXCEPT AS SHOWN ON THE PLANS. HOUSE LATERALS FROM CHIMNEYS SHALL NOT HAVE AN ANGLE OF LESS THAN 45° WITH THE MAIN LINE SEWER. ANY CHANGE IN ALIGNMENT SHALL BE REQUESTED IN WRITING BY THE PRIVATE ENGINEER
  - THE PRIVATE ENGINEER SHALL FURNISH THE HOUSE LATERAL DEPTH AT THE PROPERTY LINE BELOW THE TOP OF CURB ELEVATION FOR EACH HOUSE LATERAL ON THE GRADE SHEET
  - BEFORE WORK CAN BE STARTED, THE CONTRACTOR MUST OBTAIN A PERMIT TO EXCAVATE IN COUNTY STREETS FROM THE L.A. COUNTY ROAD DEPT., DISTRICT OFFICE NO. 3 AND PAY A FEE TO THE COUNTY ENGINEER, 500 S. VERMONT AVENUE, LOS ANGELES, CA 90005, TO COVER THE COST OF CONSTRUCTION INSPECTION AND RECORD PLANS
  - IF WORK IS TO BE DONE IN A STATE HIGHWAY, A PERMIT MUST BE OBTAINED FROM THE STATE OF CALIFORNIA, DIVISION OF HIGHWAYS, 130 SOUTH SPRING STREET, LOS ANGELES, CALIFORNIA
  - APPROVAL OF THIS PLAN BY THE COUNTY OF LOS ANGELES DOES NOT CONSTITUTE A REPRESENTATION AS TO THE ACCURACY OF THE LOCATION OF OR THE EXISTENCE OR NON-EXISTENCE OF ANY UNDERGROUND UTILITY PIPE, OR STRUCTURE WITHIN THE LIMITS OF THIS PROJECT. THIS NOTE APPLIES TO ALL PAGES
  - REFER TO SECTION 7.04.1 OF THE STANDARD SPECIFICATIONS REGARDING SAFETY ORDERS
  - PRIOR TO THE ISSUANCE OF THE REQUIRED SEWER CONSTRUCTION PERMIT, THE CONTRACTOR SHALL OBTAIN AND FILE WITH THE COUNTY ENGINEER COPIES OF A PERMIT TO EXCAVATE IN COUNTY STREETS FROM THE LOS ANGELES COUNTY ROAD DEPARTMENT, A PERMIT FOR EXCAVATIONS AND TRENCHES FROM THE STATE OF CALIFORNIA, DIVISION OF INDUSTRIAL SAFETY AND CERTIFICATE OF WORKERS COMPENSATION INSURANCE WITH THE DEPARTMENT OF COUNTY ENGINEER, 500 SOUTH VERMONT, RM. 408, LOS ANGELES, CALIFORNIA 90005, NAMED AS THE CERTIFICATE HOLDER TO BE NOTIFIED 30 DAYS PRIOR TO CANCELLATION OF POLICY

- CONSTRUCTION NOTES:**
- WORK SHALL BE CONSTRUCTED ACCORDING TO THE STANDARD SPECIFICATIONS FOR PUBLIC WORKS CONSTRUCTION (1982 EDITION WITH 1985 SUPPLEMENTS) AND COUNTY ENGINEER SPECIAL PROVISIONS FOR THE CONSTRUCTION OF SANITARY SEWERS DATED 12-27-1976 AND SHALL BE PROSECUTED ONLY IN THE PRESENCE OF THE COUNTY ENGINEER
  - THE CONTRACTOR SHALL NOTIFY THE ENVIRONMENTAL DEVELOPMENT DIVISION BY TELEPHONE 738-2158, AT LEAST TWENTY-FOUR HOURS BEFORE STARTING ANY WORK UNDER THIS CONTRACT
  - HOUSE LATERALS TO BE CONSTRUCTED WITH INVERTS AT PROPERTY LINE 8 FEET BELOW CURB GRADE EXCEPT AS NOTED
  - WYE OR TEE BRANCHES MAY BE USED FOR CONNECTIONS TO MAIN LINE SEWERS EXCEPT AS NOTED
  - ALL STRUCTURES SHALL BE EITHER BRICK MANHOLES PER S-3 OR PRECAST CONCRETE MANHOLES PER S-3B, EXCEPT AS NOTED
  - PROVIDE STAKES ON THE PROPERTY LINE OR PROPERTY LINES PRODUCED AT RIGHT ANGLES TO THE SEWER LINE AT THE CENTER LINE OF EACH MANHOLE
  - MANHOLE TOPS IN UNIMPROVED RIGHTS OF WAY TO BE SIX INCHES ABOVE FINISHED GRADE
  - WYTHIRED CLAY PIPE JOINTS SHALL BE TYPE "D" OR "B" PER STANDARD SPECIFICATIONS SECTION 208-2
  - IF A POWER POLE IS WITHIN THREE FEET OF THE SEWER THE SEWER SHALL BE ENCASED, PER S-22, CASE II, TWO FEET ON EACH SIDE FROM THE POINT OF INTERFERENCE
  - IF DURING THE COURSE OF CONSTRUCTION IT IS DETERMINED THAT THERE IS LESS THAN FOUR FEET OF COVER OVER THE TOP OF A MAIN LINE OR HOUSE LATERAL SEWER WHICH IS NOT INDICATED ON THE PLANS, THE PIPE SHALL BE ENCASED PER S-22, CASE II UNLESS OTHERWISE APPROVED BY THE COUNTY ENGINEER
  - ALL JOINTS BETWEEN CAST IRON PIPE AND WYTHIRED CLAY PIPE SHALL BE MADE WITH A RUBBER SLEEVE JOINT, TYPE "C" OR "D" (WITH BUSHING IF NECESSARY) PER STANDARD SPECIFICATIONS, SECTION 208-3
  - SEWERS TO BE TESTED FOR LEAKAGE PER SECTION 208-1.4 OF THE STANDARD SPECIFICATIONS AND SPECIAL PROVISIONS
  - RESURFACE ALL TRENCHES WITHIN PAVED AREAS TO MEET L.A. COUNTY ROAD DEPT. OR CALIFORNIA STATE HIGHWAY REQUIREMENTS IN ACCORDANCE WITH PERMITS
  - FULL COMPLIANCE WITH SECTION 208-1.3.3 OF THE SPECIAL PROVISIONS WILL BE REQUIRED FOR BACKFILL IN STREETS. CERTIFICATION OF BACKFILL COMPACTION AND SAND INVALUATES BY A QUALIFIED, PRESTEMED TESTING LABORATORY SHALL BE PROVIDED BY THE PERMITTEE PRIOR TO THE ISSUANCE OF A CERTIFICATE OF PARTIAL ACCEPTANCE
  - SPECIAL BACKFILL IN EASEMENT CONSTRUCTION (A) BACKFILL TRENCH AND REPLACE OTHER EARTH SO AS TO ACHIEVE THE NATURAL OR FINISHED GRADES AND SLOPES SHOWN ON THE GRADING PLAN APPROVED FOR THIS DEVELOPMENT BY THE BUILDING AND SAFETY DIVISION (B) ALL BACKFILL AND LAYS IN PLACE SHALL BE COMPACTED TO A MINIMUM OF 80% OF MAXIMUM DENSITY PER A.S.T.M. STD. METHOD OF TEST 9985F AS MODIFIED. ACCEPTABLE CERTIFICATION OF SUCH COMPACTION SHALL BE SUBMITTED TO THE ENVIRONMENTAL DEVELOPMENT DIVISION

THE FOLLOWING LATEST REVISED STANDARD PLANS ON FILE IN THE OFFICE OF THE COUNTY ENGINEER SHALL APPLY IN THE CONSTRUCTION OF THIS PROJECT:

USDRS	5-1
MINIMUM PUBLIC SAFETY REQUIREMENTS	5-2
BRICK MANHOLES	5-3
STANDARD MANHOLE SETS	5-4
MINIMUM FOR SEWER PIPE	5-5
CASTING AND EMBARKMENT	5-6
WYE OR TEE SUPPORT	5-7
ALLOWABLE TRENCH WIDTHS	5-8
ROCKING MANHOLES PLANS AND COVER	5-9
NON-SIMPLICIAL PRECAST CONCRETE MANHOLE	5-10

COUNTY OF LOS ANGELES, CALIFORNIA  
 STEPHEN J. KOONCE, COUNTY ENGINEER  
 WALTER E. GARRISON, CHIEF ENGINEER  
 CO. SAN. DIST. NO. 25  
 APPROVED *Martin L. Murphy* 2-16-89  
 CHECKED *Edgar D. Smith* 2/1/89  
 REG. C.E. NO. 16553  
 SANTA CLARITA VALLEY BLDG. DIST. #2

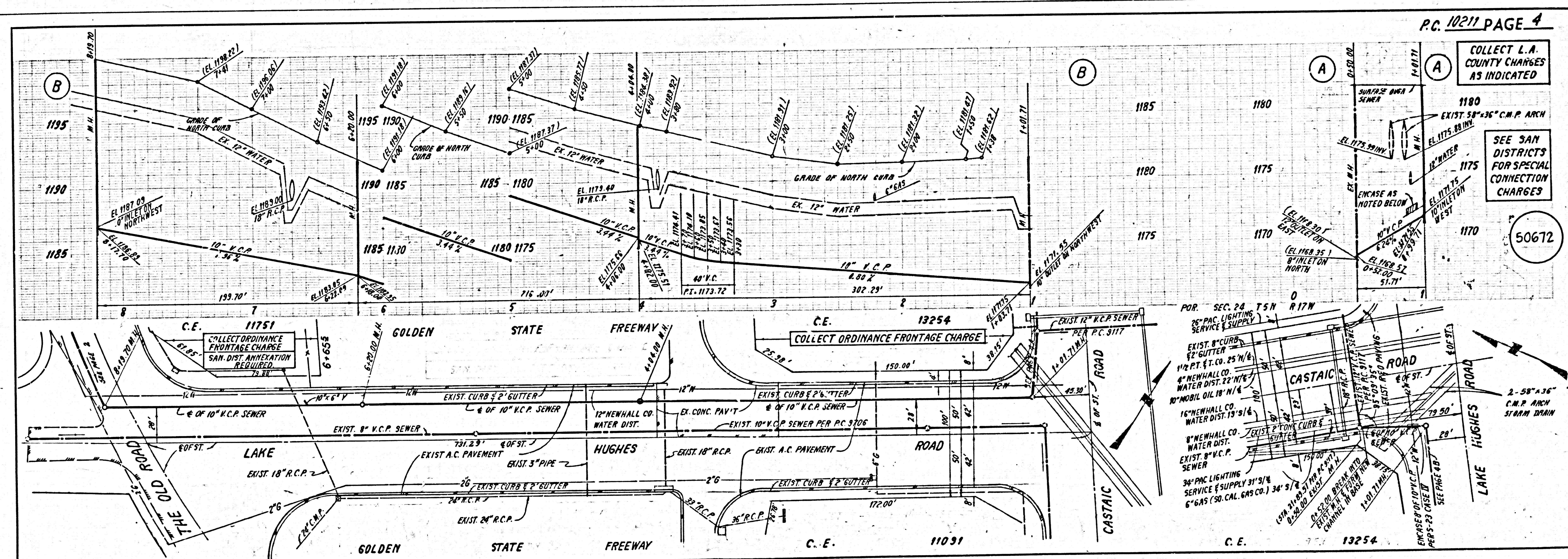
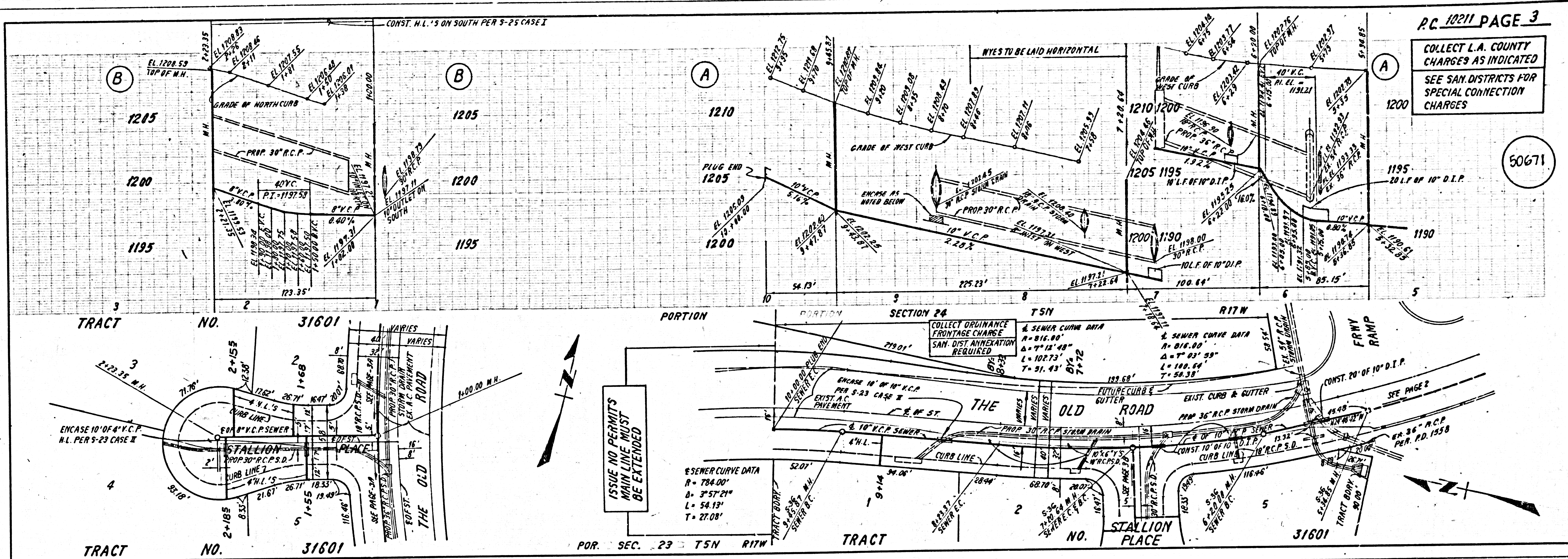


COLLECT L.A. COUNTY  
 CHARGES AS INDICATED  
 SEE SAN. DISTRICTS FOR  
 SPECIAL CONNECTION  
 CHARGES

COLLECT ORDINANCE FRONTAGE CHARGE  
 SAN. DIST. ANNEXATION REQUIRED

COLLECT ORDINANCE FRONTAGE CHARGE  
 SAN. DIST. ANNEXATION REQUIRED





Use  $\text{|||||}$  on back for <sup>exist.</sup> Concrete - See Sample Plan pg. 2

(S)

1150129 1021E ON TRACT