

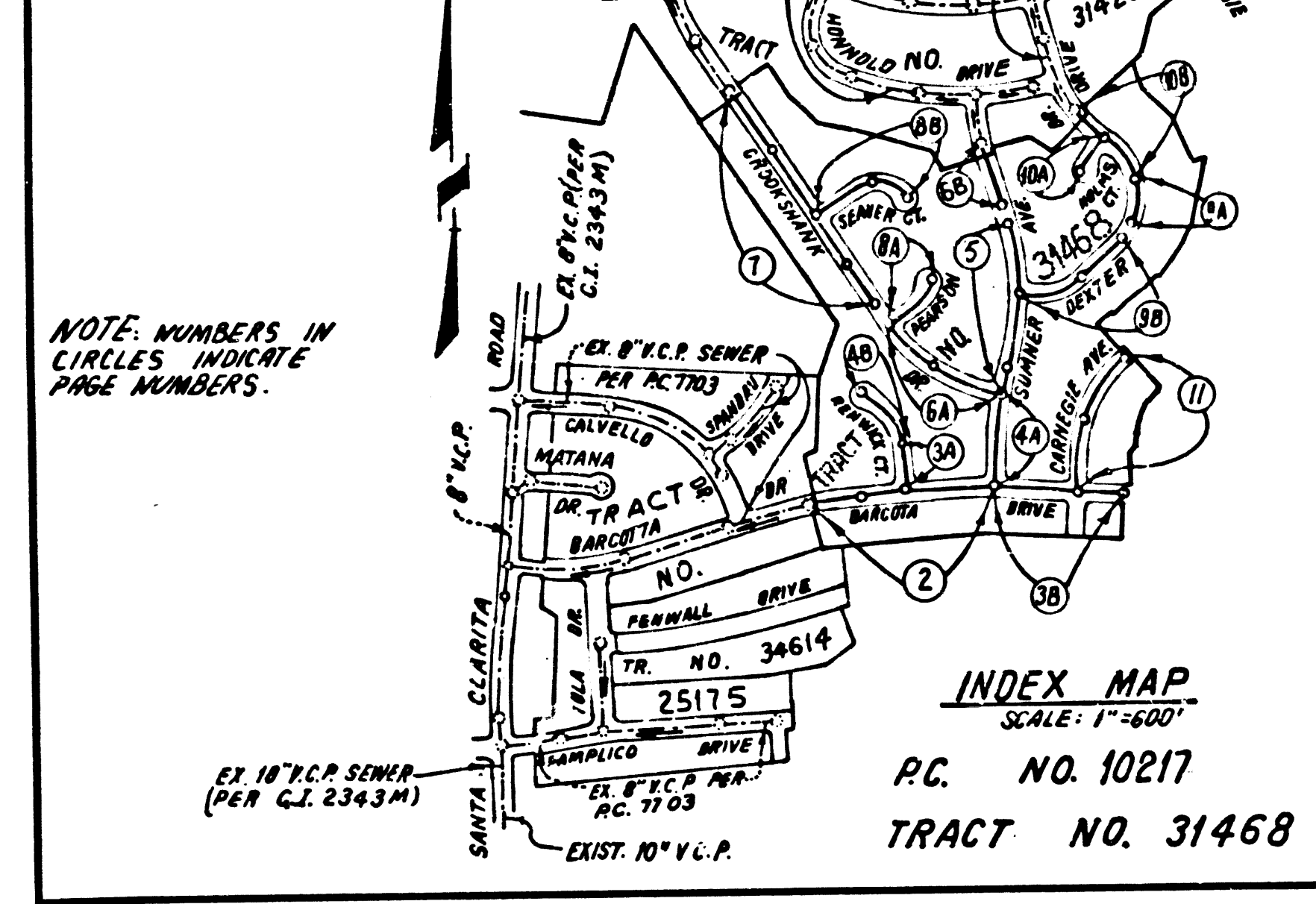
B.M. CL 3019 ELEV. 1314.729
 L.A. CO. MUN. IN. CO. OF E. SERVICE RD. OF SEC. 2
 LY. RD. 14 FT. W. C.L. & 54 FT. S/D END CB. IN
 FRONT OF HSE # 27656 0.1 MI. N. CALVELLO DR.
 NENHALL QUAD. 19.72

DOUBLE VERTICAL SCALE

NO CONNECTION FOR THE DISPOSAL OF INDUSTRIAL WASTES SHALL BE MADE TO SEWERS SHOWN ON THESE DRAWINGS UNTIL A PERMIT FOR INDUSTRIAL WASTEWATER DISCHARGE HAS BEEN ISSUED BY THE SANITATION DISTRICTS FOR SAID CONNECTION.

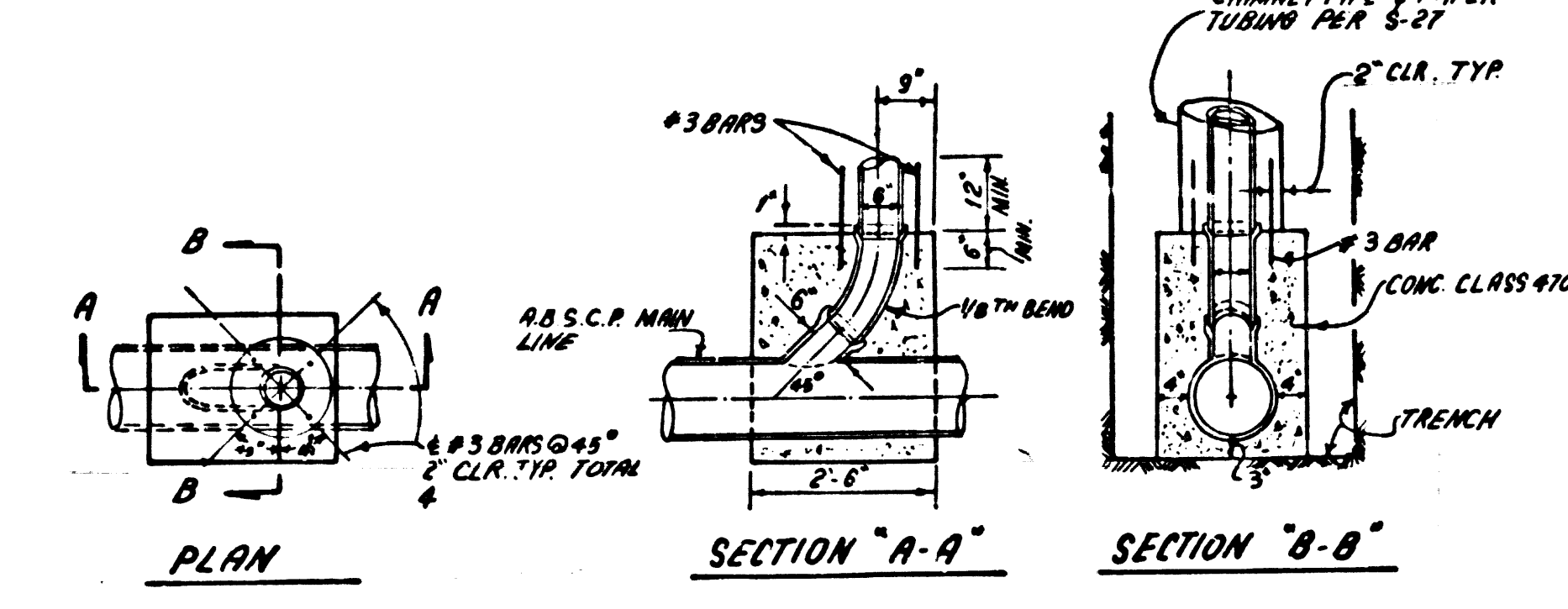
BEFORE BREAKING INTO OR CONSTRUCTION ON A COUNTY SANITATION DISTRICT SEWER AND PRIOR TO FINAL ACCEPTANCE OF THE PROJECT, SANITATION DISTRICT INSPECTOR SHALL BE NOTIFIED BY PHONE 818 - 962-8605 SO THAT REQUIRED INSPECTION CAN BE MADE.

REVISION NO. 1 DATE 11-29-89
 PAGE 1 REVISED TOP OF CURB GRADE FROM STA 574.00 TO 574.15
 PAGE 2 REVISED TOP OF CURB GRADE FROM STA 714.15 TO 714.30
 PAGE 3 REVISED TOP OF CURB GRADE FROM STA 714.30 TO 714.45
 PAGE 4 REVISED TOP OF CURB GRADE FROM STA 714.45 TO 714.60
 PAGE 5 REVISED TOP OF CURB GRADE FROM STA 714.60 TO 714.75
 PAGE 6 REVISED TOP OF CURB GRADE FROM STA 714.75 TO 714.90
 PAGE 7 REVISED TOP OF CURB GRADE FROM STA 714.90 TO 715.05
 PAGE 8 REVISED TOP OF CURB GRADE FROM STA 715.05 TO 715.20
 PAGE 9 REVISED TOP OF CURB GRADE FROM STA 715.20 TO 715.35
 PAGE 10 REVISED TOP OF CURB GRADE FROM STA 715.35 TO 715.50
 PAGE 11 REVISED TOP OF CURB GRADE FROM STA 715.50 TO 715.65
 PAGE 12 REVISED TOP OF CURB GRADE FROM STA 715.65 TO 715.80
 PAGE 13 REVISED TOP OF CURB GRADE FROM STA 715.80 TO 715.95
 PAGE 14 REVISED TOP OF CURB GRADE FROM STA 715.95 TO 716.10
 PAGE 15 REVISED TOP OF CURB GRADE FROM STA 716.10 TO 716.25
 PAGE 16 REVISED TOP OF CURB GRADE FROM STA 716.25 TO 716.40
 PAGE 17 REVISED TOP OF CURB GRADE FROM STA 716.40 TO 716.55
 PAGE 18 REVISED TOP OF CURB GRADE FROM STA 716.55 TO 716.70
 PAGE 19 REVISED TOP OF CURB GRADE FROM STA 716.70 TO 716.85
 PAGE 20 REVISED TOP OF CURB GRADE FROM STA 716.85 TO 717.00



- CONSTRUCTION NOTES CONTINUED.
- FULL COMPLIANCE WITH PART 13 OF THE SPECIAL PROVISIONS IS REQUIRED FOR THE INSTALLATION OF A.B.S. COMPOSITE PIPE.
 - MANHOLE WATER STOP BASKETS AND CLAMPS ARE REQUIRED FOR THE CONNECTION OF A.B.S. COMPOSITE PIPE TO MANHOLE STRUCTURES.
 - A.B.S. SOLID WALL PIPE MUST BE USED FOR WYE AND HOUSELATERAL CONNECTIONS TO A.B.S. COMPOSITE MAINLINE SEWER PIPE.
 - A.B.S. COMPOSITE PIPE SHALL BE BEDDED IN CONFORMANCE WITH THE TABLE IN SECTION B-3.1 OF PART 13 OF THE SPECIAL PROVISIONS.
 - THREE DEGREE DEFLECTION COUPLERS ARE REQUIRED FOR RADIUS OF CURVATURE LESS THAN 300 FEET WHEN USING 6" A.B.S. C.P.
 - NO CONNECTIONS FOR THE DISPOSAL OF INDUSTRIAL WASTE IS ALLOWED IF A.B.S. COMPOSITE PIPE IS USED.
 - SEWER LINE CURVATURE SHALL NOT BE ACHIEVED BY PULLING OF JOINTS OR REVEILING PIPE ENDS WHEN USING PLASTIC PIPE INCLUDING A.B.S. COMPOSITE PIPE.

NOTE: ALLOW NO H.L. CONNECTIONS UNTIL OUTLET P.C. 10037 IS ACCEPTED FOR PUBLIC USE.



- GENERAL NOTES:
- ELEVATIONS ARE IN FEET ABOVE U.S.C. & G.S. SEA LEVEL DATUM OF 1929.
 - NO REVISIONS SHALL BE MADE IN THESE PLANS WITHOUT THE APPROVAL OF THE COUNTY ENGINEER.
 - NO REPRESENTATIVE OF THE COUNTY ENGINEER WILL SURVEY OR LAY OUT ANY PORTION OF THE WORK.
 - GRADES TO WHICH THIS IMPROVEMENT IS TO BE CONSTRUCTED ARE SHOWN ON PLANS AND PROFILES. SPACE POINTS FOR TOP OF CURBS, CENTER LINE OF STREETS, OR CENTER LINE OF ALLEYS ARE SHOWN BY CIRCLES ON PROFILES AT ALL POINTS BETWEEN DESIGNATED POINTS THE GRADE SHALL BE ESTABLISHED SO AS TO CONFORM TO A STRAIGHT LINE DRAWN BETWEEN SAID DESIGNATED POINTS.
 - THE PRIVATE ENGINEER SHALL FURNISH THE COUNTY ENGINEER WITH GRADE SHEETS AND STATIONING FOR ALL HOUSE LATERALS AND "Y" OR "T" BRANCHES LINE. "HALL" PROVIDE STAKES FOR THEM AT THEIR PROPER LOCATIONS WITH STATIONING PLAINLY MARKED. ALL HOUSE LATERALS SHALL BE "CONSTRUCTED IN A STRAIGHT" ALIGNMENT AT RIGHT ANGLES TO THE MAIN LINE SEWER EXCEPT AS SHOWN ON THE PLANS. HOUSE LATERALS FROM CHIMNEYS SHALL NOT HAVE AN ANGLE OF LESS THAN 45° WITH THE MAIN LINE SEWER. ANY CHANGE IN ALIGNMENT SHALL BE REQUESTED IN WRITING BY THE PRIVATE ENGINEER.
 - THE PRIVATE ENGINEER SHALL FURNISH THE "HOUSE LATERAL" DEFINED AT THE PROPERTY LINE BELOW THE TOP OF CURB ELEVATION FOR EACH HOUSE LATERAL ON THE GRADE SHEET.
 - BEFORE WORK CAN BE STARTED THE CONTRACTOR MUST OBTAIN A PERMIT TO EXCAVATE IN COUNTY STREETS FROM THE L.A. COUNTY ROAD DEPT. DISTRICT OFFICE NO. 5 AND PAY A FEE TO THE COUNTY ENGINEER, 500 S. VERMONT AVENUE, LOS ANGELES, CA 90005. TO COVER THE COST OF CONSTRUCTION INSPECTION AND RECORD PLANS.
 - IF WORK IS TO BE DONE IN A STATE HIGHWAY A PERMIT MUST BE OBTAINED FROM THE STATE OF CALIFORNIA, DIVISION OF HIGHWAYS, 120 SOUTH SPRING STREET, LOS ANGELES, CALIFORNIA.
 - APPROVAL OF THIS PLAN BY THE COUNTY OF LOS ANGELES DOES NOT CONSTITUTE A REPRESENTATION AS TO THE ACCURACY OF THE LOCATION OF OR THE EXISTENCE OR NON-EXISTENCE OF ANY UNDERGROUND UTILITY PIPE OR STRUCTURE WITHIN THE LIMITS OF THIS PROJECT. THIS NOTE APPLIES TO ALL PAGES.
 - REFER TO SECTION 7.10.4.1 OF THE STANDARD SPECIFICATIONS REGARDING SAFETY ORDERS.
 - PRIOR TO THE ISSUANCE OF THE REQUIRED SEWER CONSTRUCTION PERMIT THE CONTRACTOR SHALL OBTAIN AND FILE WITH THE COUNTY ENGINEER COPIES OF A PERMIT TO EXCAVATE IN COUNTY STREETS FROM THE LOS ANGELES COUNTY ROAD DEPARTMENT. A PERMIT FOR EXCAVATIONS AND TRENCHES FROM THE STATE OF CALIFORNIA, DIVISION OF INDUSTRIAL SAFETY AND A CERTIFICATE OF WORKERS COMPENSATION INSURANCE WITH THE DEPARTMENT OF COUNTY ENGINEER, 500 SOUTH VERMONT, RM. 408, LOS ANGELES, CALIFORNIA 90005. NAMED AS THE CERTIFICATE HOLDER TO BE NOTIFIED 30 DAYS PRIOR TO CANCELLATION OF POLICY.
- CONSTRUCTION NOTES:
- WORK SHALL BE CONSTRUCTED ACCORDING TO THE STANDARD SPECIFICATIONS FOR PUBLIC WORKS CONSTRUCTION (1982 EDITION WITH 1984 SUPPLEMENTS) AND COUNTY ENGINEER SPECIAL PROVISIONS FOR THE CONSTRUCTION OF SANITARY SEWERS DATED SEPTEMBER 21, 1976. AND SHALL BE PROSECUTED ONLY IN THE PRESENCE OF THE COUNTY ENGINEER.
 - THE CONTRACTOR SHALL NOTIFY THE PROJECT MANAGEMENT DIVISION BY TELEPHONE 728-2316 AT LEAST TWENTY-FOUR HOURS BEFORE STARTING ANY WORK UNDER THIS CONTRACT.
 - HOUSE LATERALS TO BE CONSTRUCTED WITH INVERTS AT PROPERTY LINE 8 FEET BELOW CURB GRADE EXCEPT AS NOTED.
 - WYE OR TEE BRANCHES MAY BE USED FOR CONNECTIONS TO MAINLINE SEWERS EXCEPT AS NOTED.
 - WYE OR TEE BRANCHES ONLY SHALL BE USED FOR CONNECTIONS TO MAINLINE 12" A.B.S.C.P. WITH APPROVED FITTINGS.
 - ALL JOINTS BETWEEN CAST IRON PIPE AND A.B.S. COMPOSITE PIPE SHALL BE MADE WITH APPROVED FITTINGS.
 - ALL JOINTS BETWEEN 12" A.B.S.C.P. AND 12" A.B.S.C.P. SHALL BE MADE WITH APPROVED FITTINGS.
 - RESURFACE ALL TRENCHES WITHIN PAVED AREAS TO MEET A COUNTY ROAD DEPT. OR CALIFORNIA STATE HIGHWAY REQUIREMENTS IN ACCORDANCE WITH PERMITS.
 - FULL COMPLIANCE WITH SECTION 200-1.3.3 OF THE SPECIAL PROVISIONS WILL BE REQUIRED FOR BACKFILL IN STREETS. CERTIFICATION OF BACKFILL COMPACTION AND SAND EQUIVALENTS BY A QUALIFIED REGISTERED TESTING LABORATORY SHALL BE PROVIDED BY THE PERMITTEE PRIOR TO THE ISSUANCE OF A CERTIFICATE OF PARTIAL ACCEPTANCE.
 - SPECIAL BACKFILL IN EASEMENT CONSTRUCTION (A) BACKFILL TRENCH AND REPLACE OTHER EARTH SO AS TO ACHIEVE THE NATURAL OR FINISHED GRADES AND SLOPES SHOWN ON THE DRAINING PLAN APPROVED FOR THIS DEVELOPMENT BY THE BUILDING AND SAFETY DIVISION. (B) ALL BACKFILL AND EARTH REPLACED SHALL BE COMPACTED TO A MINIMUM OF 80% OF MAXIMUM DENSITY PER A.S.T.M. METHOD OF TEST D998/97 AS REQUIRED. ACCEPTABLE CERTIFICATION OF SUCH COMPACTION SHALL BE SUBMITTED TO THE PROJECT MANAGEMENT DIVISION.

TO BE CONSTRUCTED IN TRACT NO. 31468

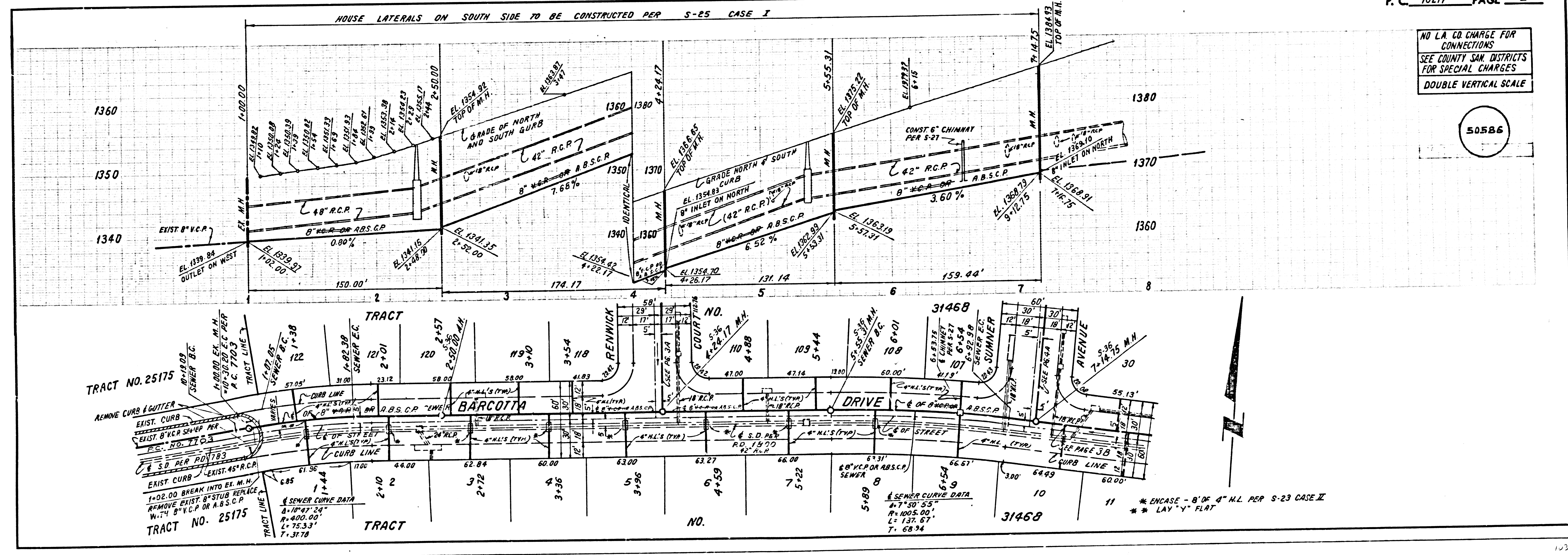
PRIVATE CONTRACT NO. 10217
 A-92, F 5 & 6
 W.S. 62
 6 SHEETS, 11 PAGES

SCALE: VERT. 1"=6' HORIZ. 1"=50'
 PREPARED IN THE OFFICES OF SWAND ENGINEERING ASSOCIATES
 15230 BURBANK BLVD., VAN NUYS CALIFORNIA 91411, (213) 787-8550
 BY: *Robert C. K...* REG. C.E. NO. 21893

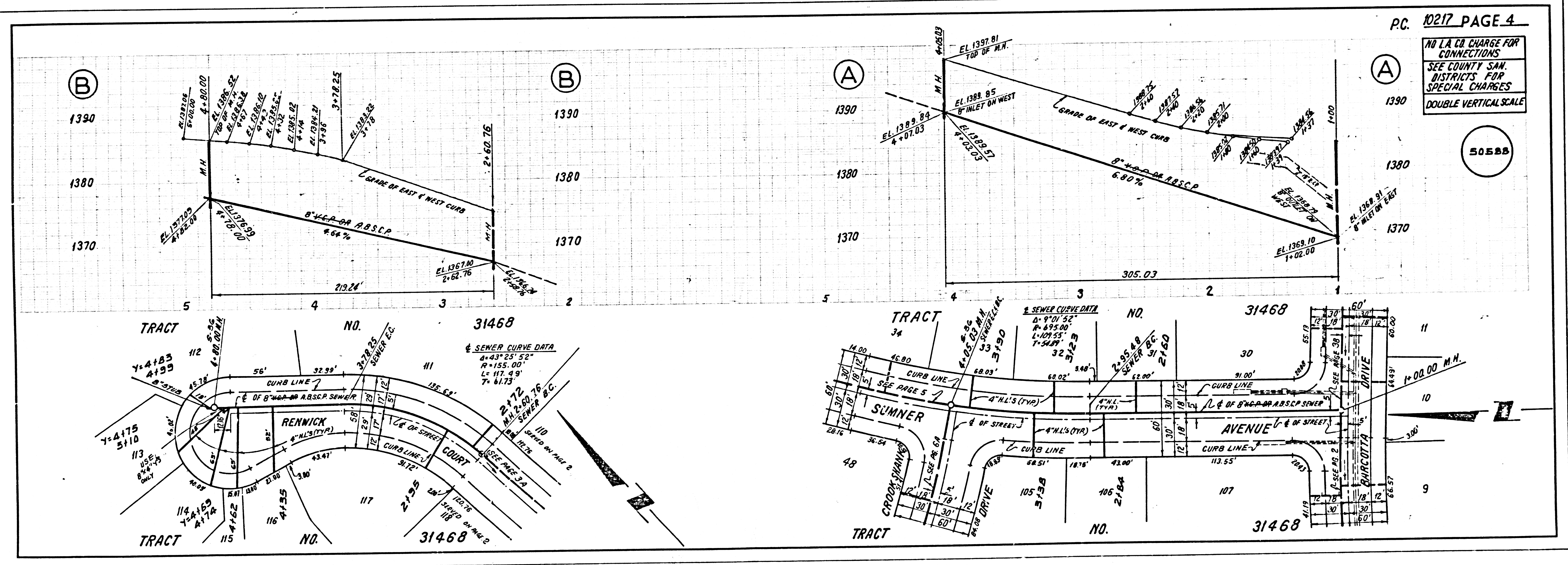
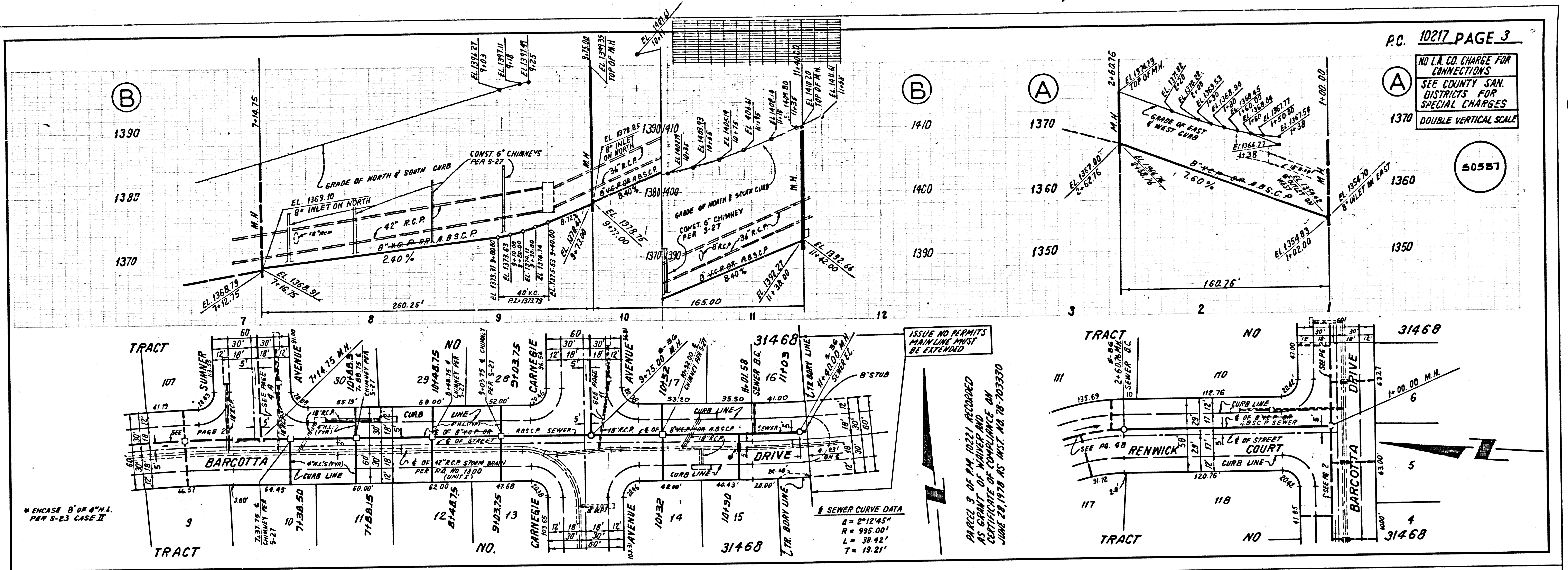
THE FOLLOWING LATEST REVISED STANDARD PLANS ON FILE IN THE OFFICE OF THE COUNTY ENGINEER SHALL APPLY IN THE CONSTRUCTION OF THIS PROJECT.

LEGEND	5-1
MINIMUM PUBLIC SAFETY REQUIREMENTS	5-2
BRICK MANHOLE	5-3
STANDARD MANHOLE STEP	5-4
BEDDING FOR SEWER PIPE	5-5
CRADLING AND ENCASMENT	5-6
WYE OR TEE SUPPORT	5-7
ALLOWABLE TRENCH WIDTHS	5-8
LOCKING MANHOLE FRAME AND COVER	5-9
NON-REINFORCED PRECAST CONCRETE MANHOLE	5-10
SPECIAL HOUSE LATERALS	5-11
CHIMNEY PIPE AND BASE	5-12

COUNTY OF LOS ANGELES, CALIFORNIA
 STEPHEN J. KOONCE, COUNTY ENGINEER CHARLES W. CARRY, CHIEF ENGINEER
 CO. SAN. DIST. NO. 28
 APPROVED: *Stephen J. Koonce* 5-31-89 DATE APPROVED: *Charles W. Carry* 5-31-89 DATE
 CHECKED: *Robert C. K...* 5-30-89 DATE
 REG. C.E. NO. 32149
 SANTA CLARITA VALLEY BLDG. DIST. 8.2



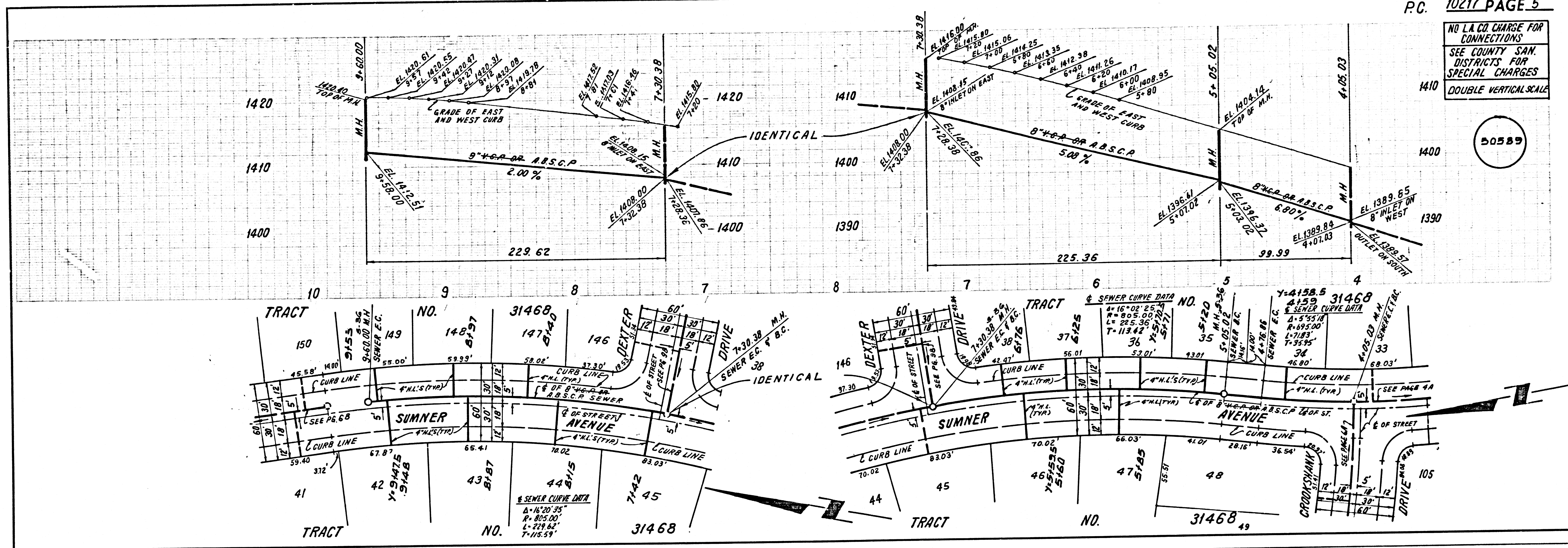
NO L.A. CO. CHARGE FOR CONNECTIONS
 SEE COUNTY SAN. DISTRICTS FOR SPECIAL CHARGES
 DOUBLE VERTICAL SCALE
 50586



S 71501 29 83416 ON TRACT

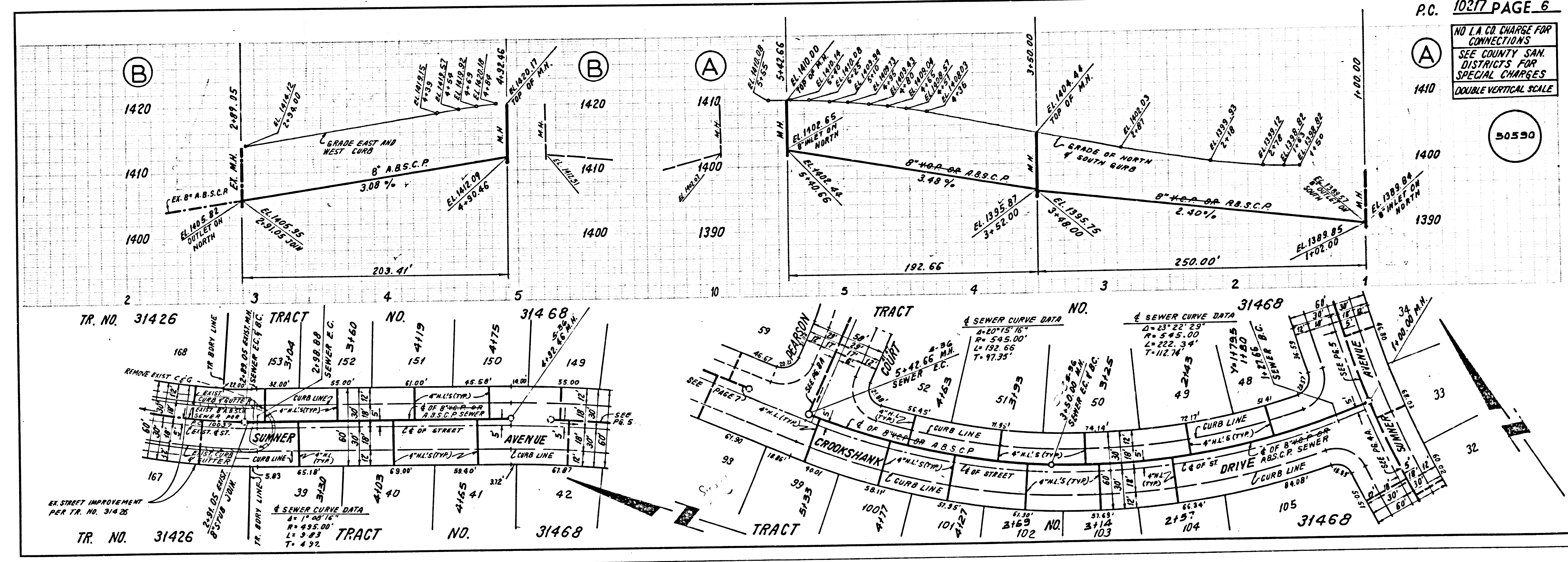
NO L.A. CO. CHARGE FOR CONNECTIONS
SEE COUNTY SAN. DISTRICTS FOR SPECIAL CHARGES
DOUBLE VERTICAL SCALE

50589



NO L.A. CO. CHARGE FOR CONNECTIONS
SEE COUNTY SAN. DISTRICTS FOR SPECIAL CHARGES
DOUBLE VERTICAL SCALE

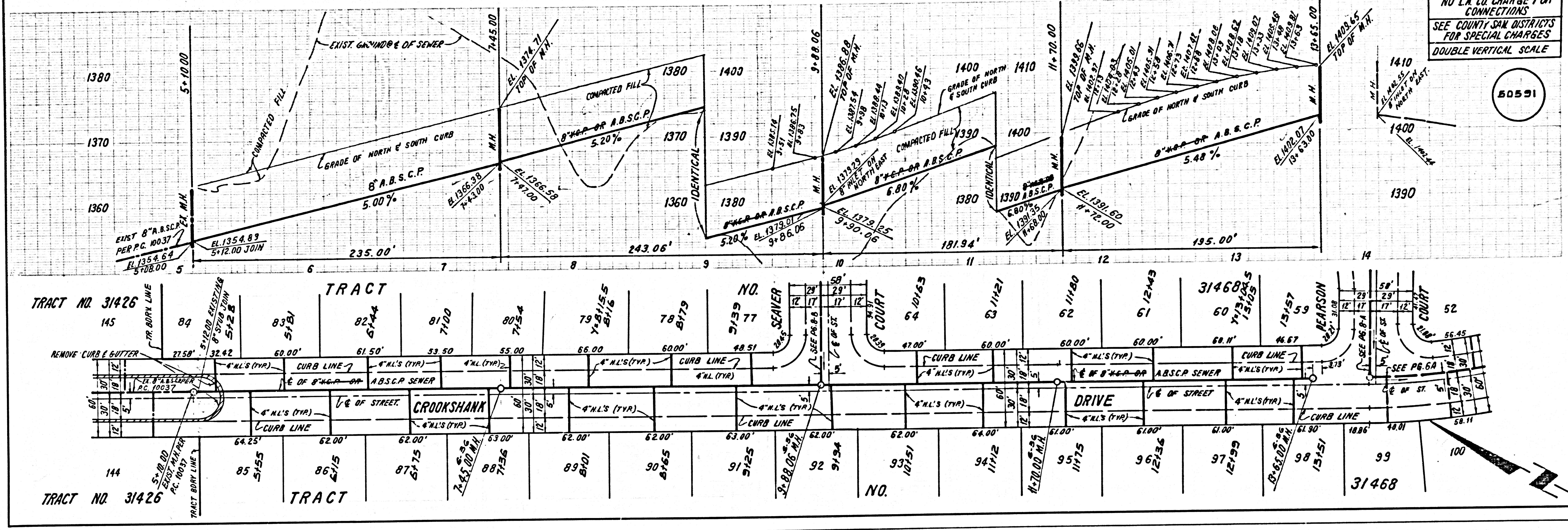
50590



3 11501 29 8491E ON TRACT

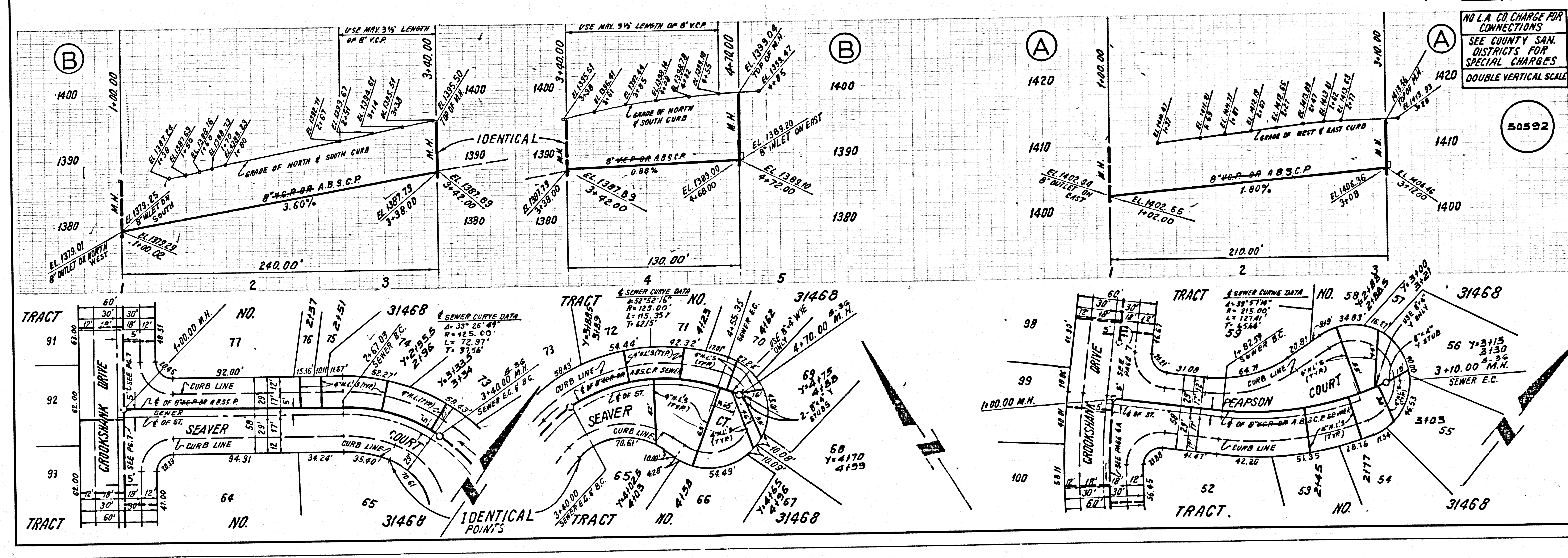
NO L.A. CO. CHARGE FOR CONNECTIONS
SEE COUNTY SAN DISTRICTS FOR SPECIAL CHARGES
DOUBLE VERTICAL SCALE

50591

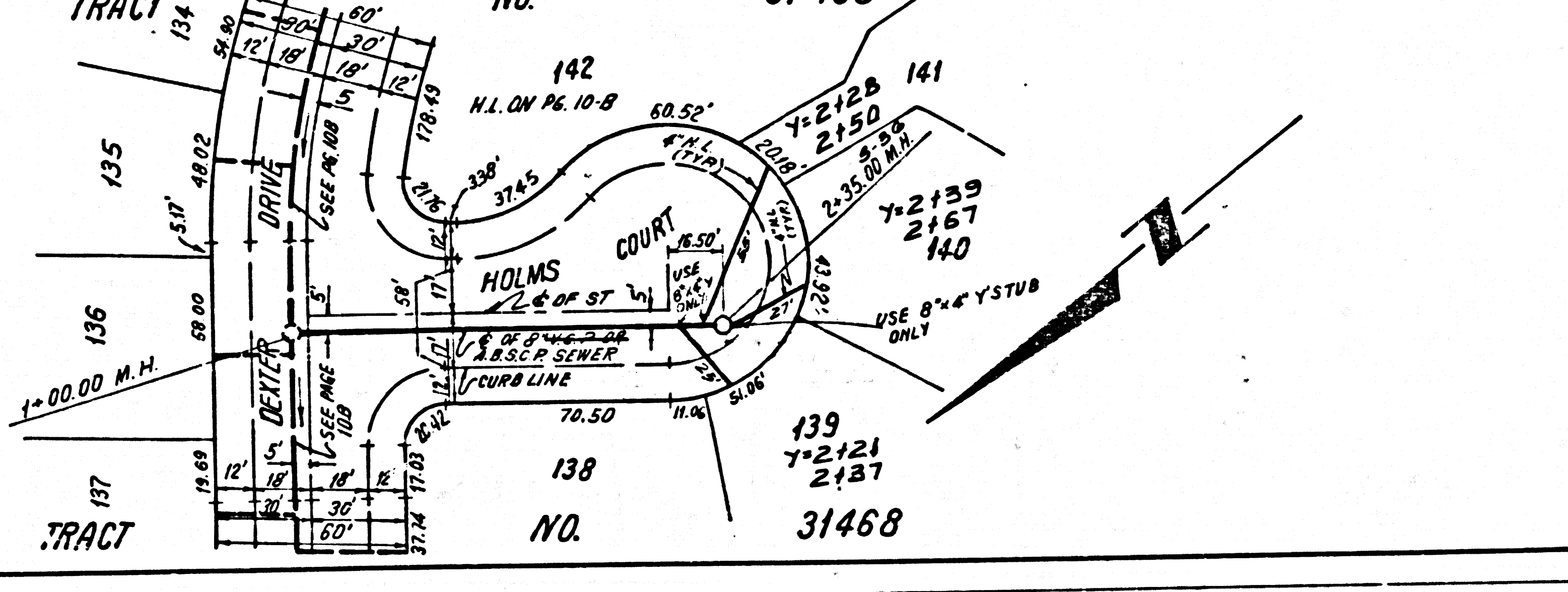
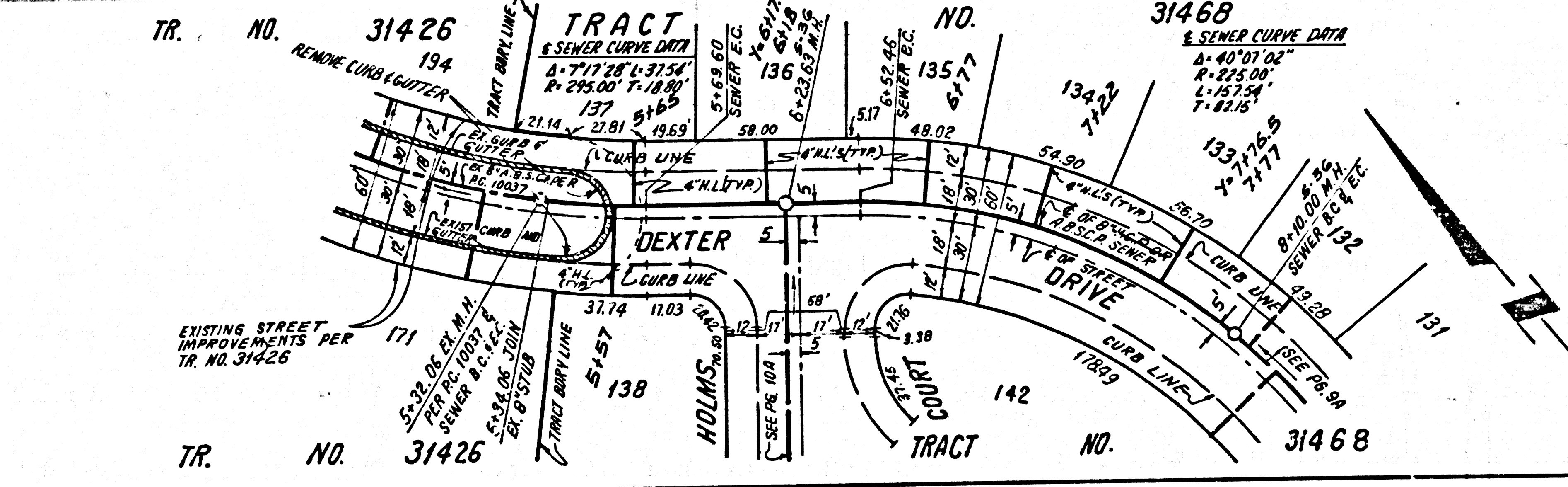
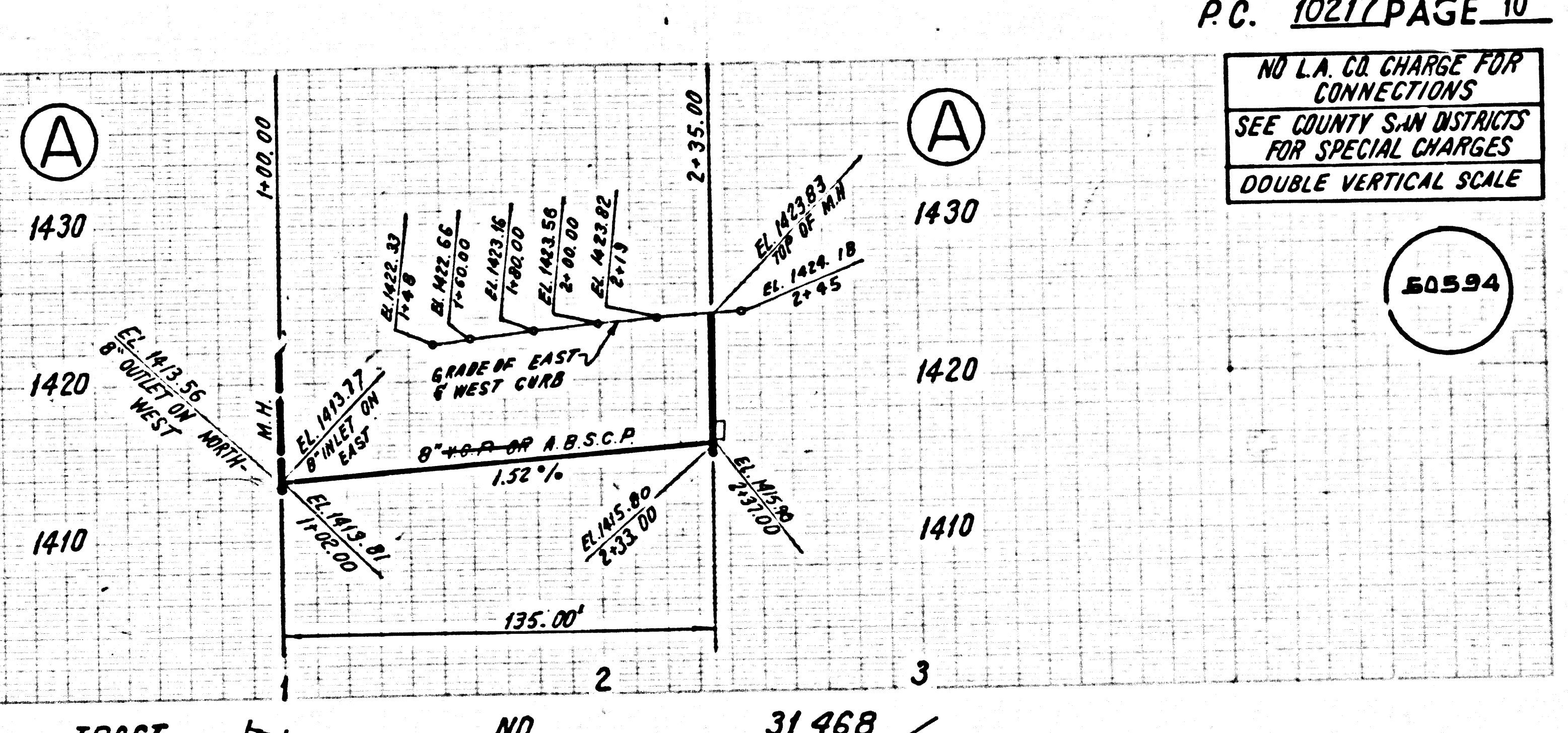
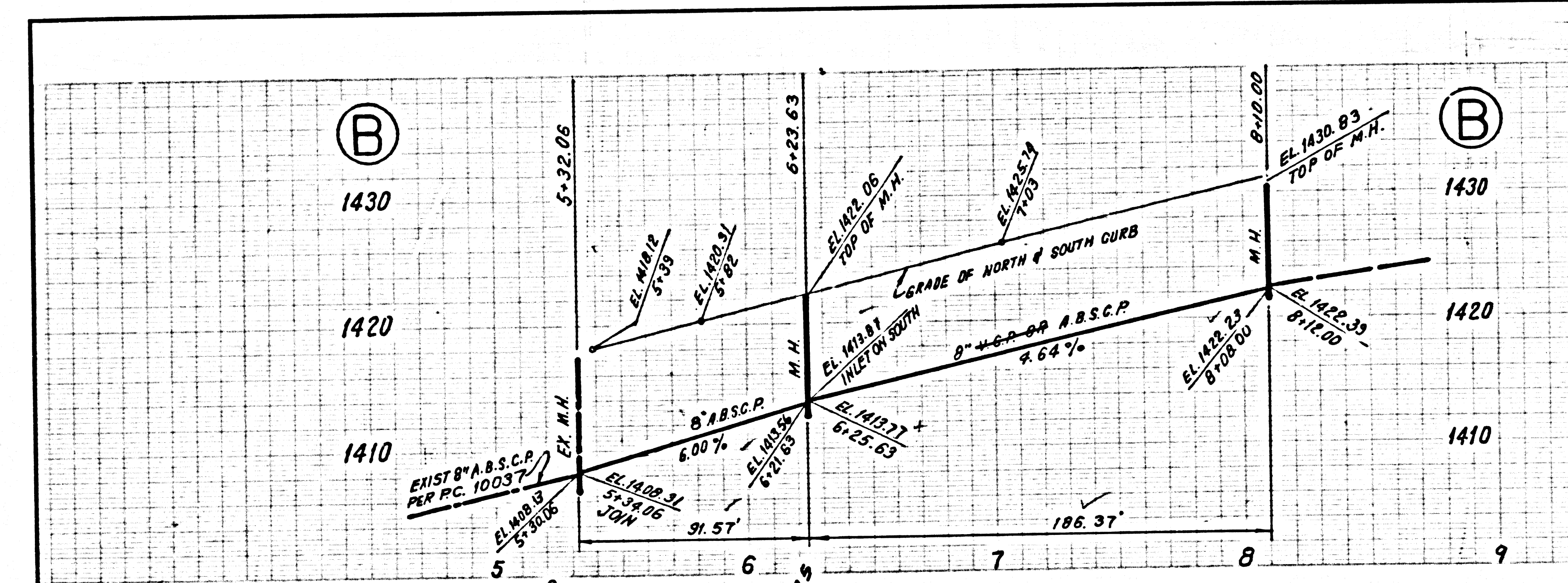
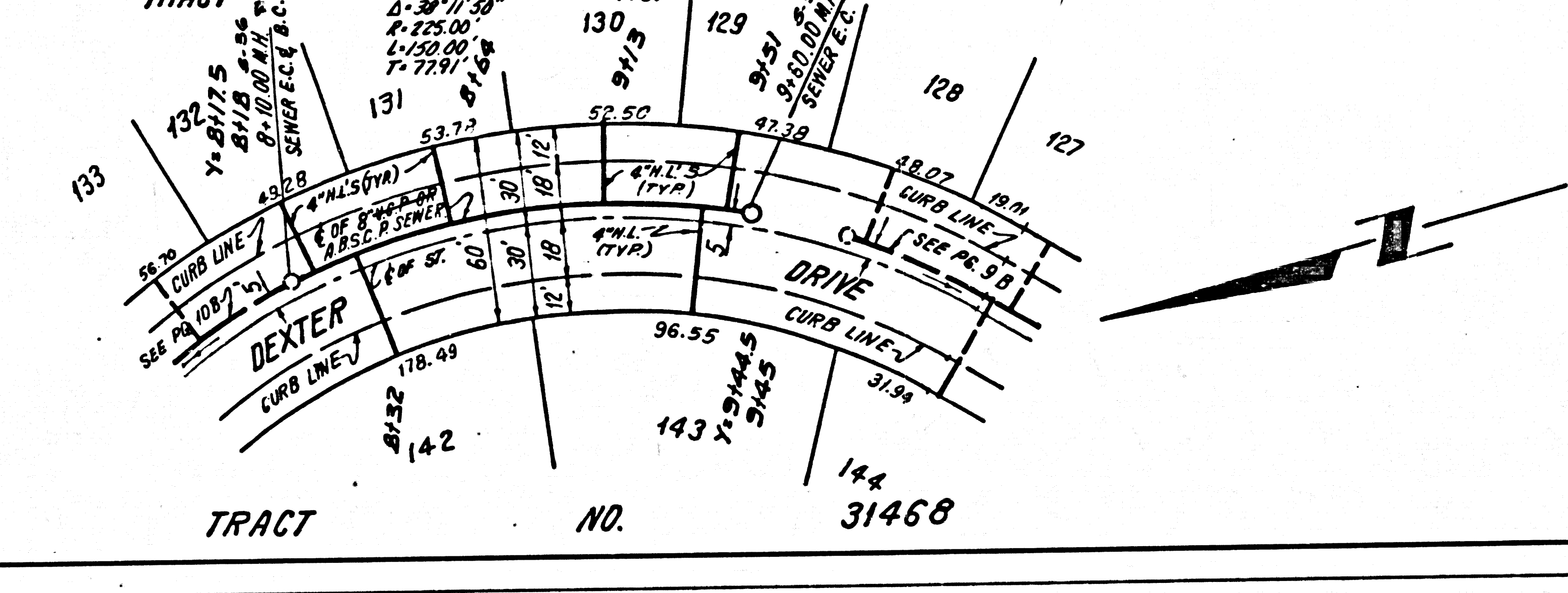
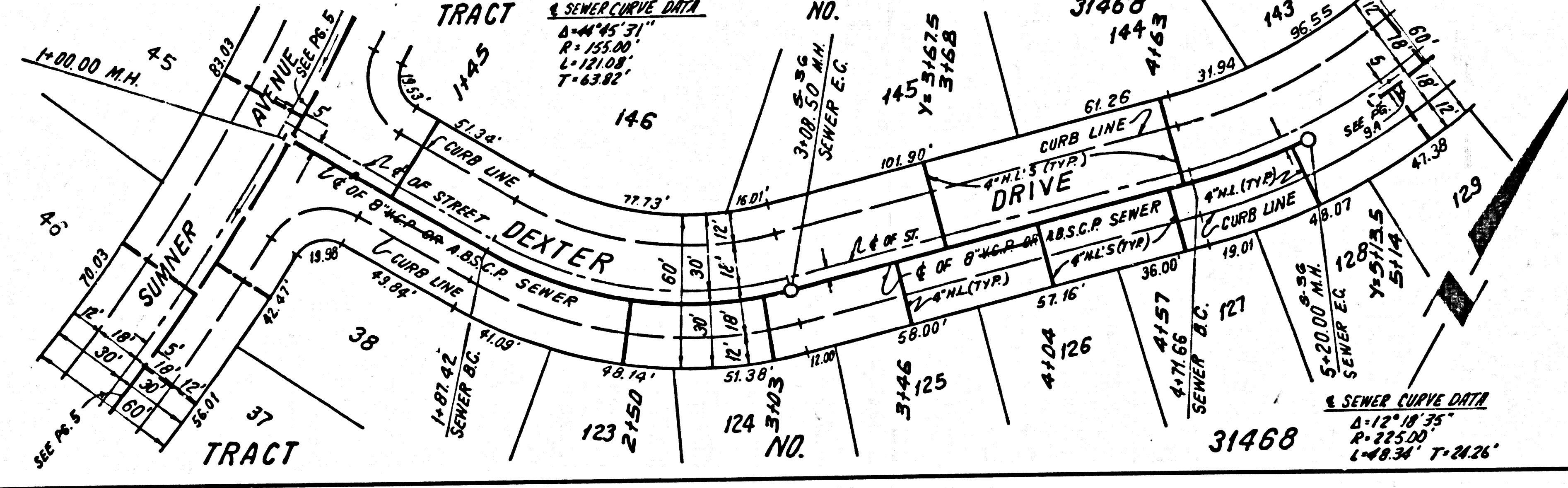
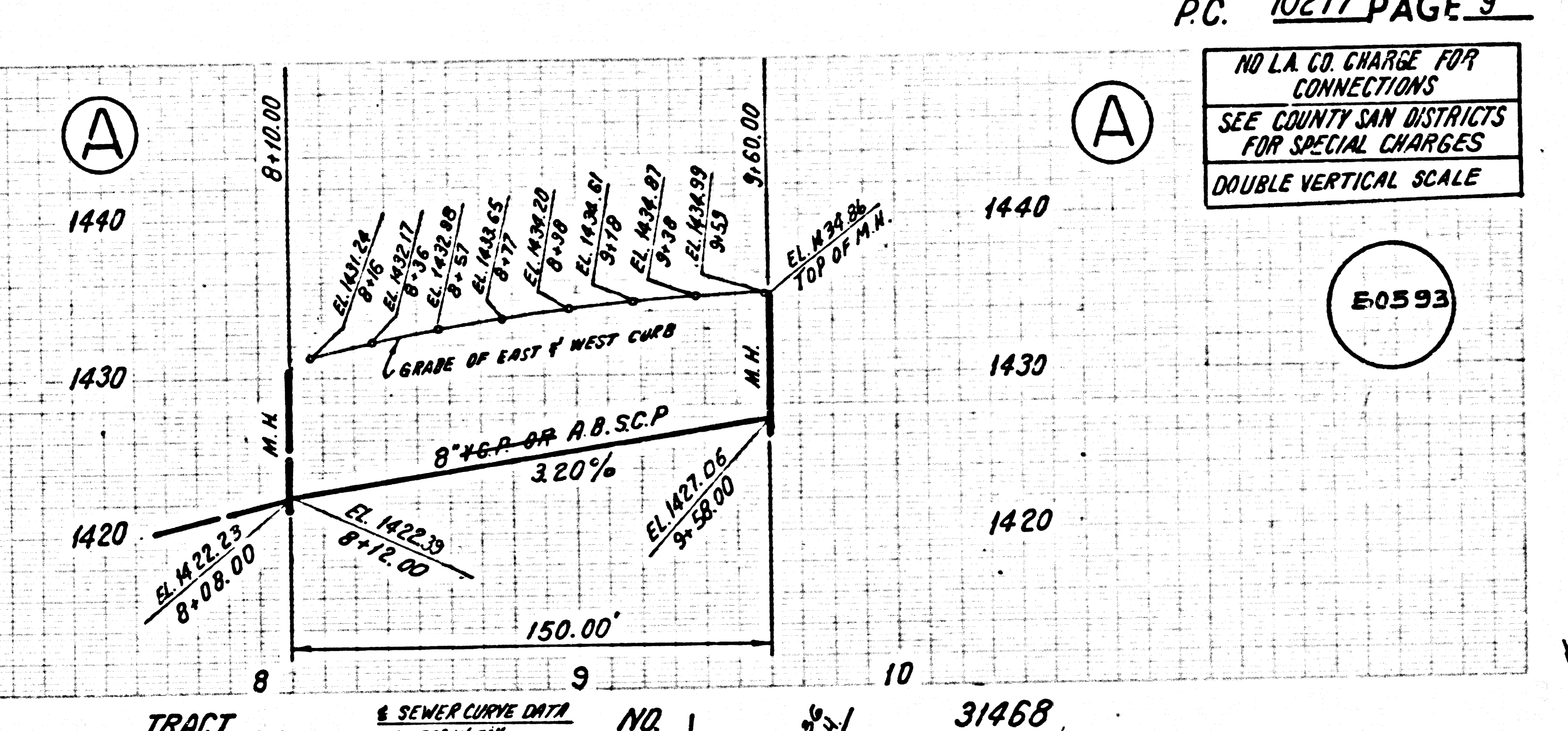
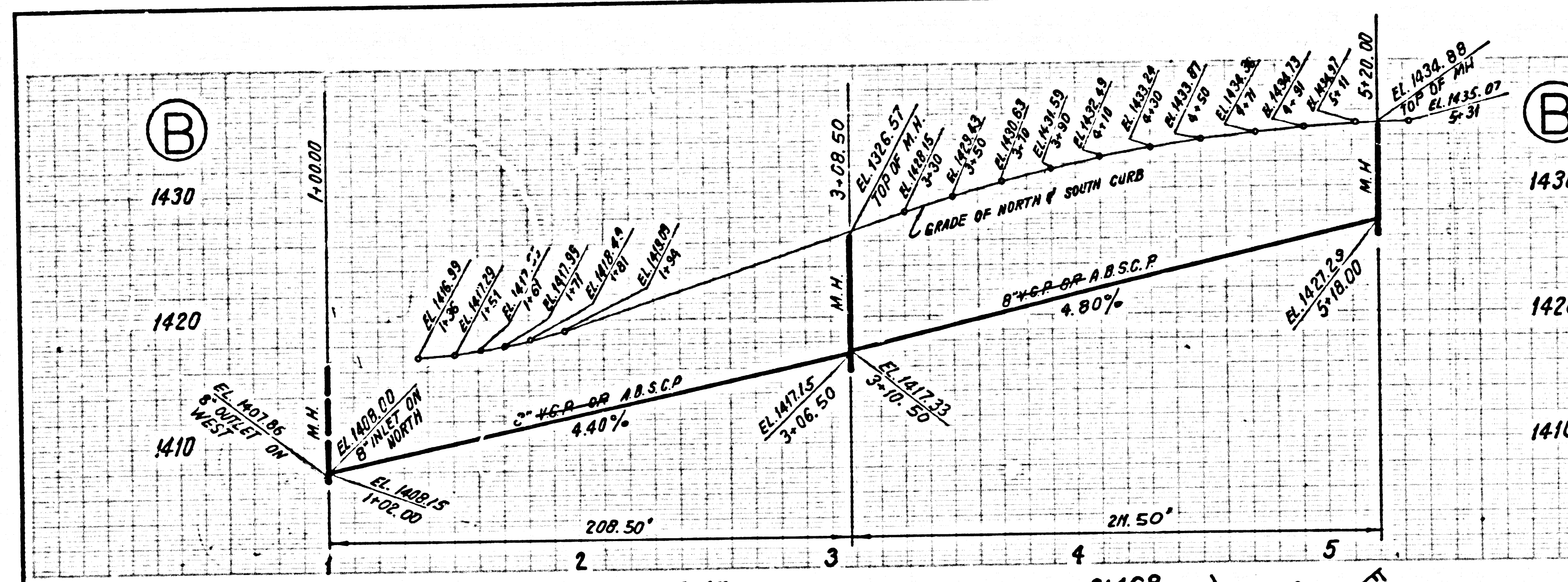


NO L.A. CO. CHARGE FOR CONNECTIONS
SEE COUNTY SAN DISTRICTS FOR SPECIAL CHARGES
DOUBLE VERTICAL SCALE

50592



4
17501 29 88116 ON TRACT



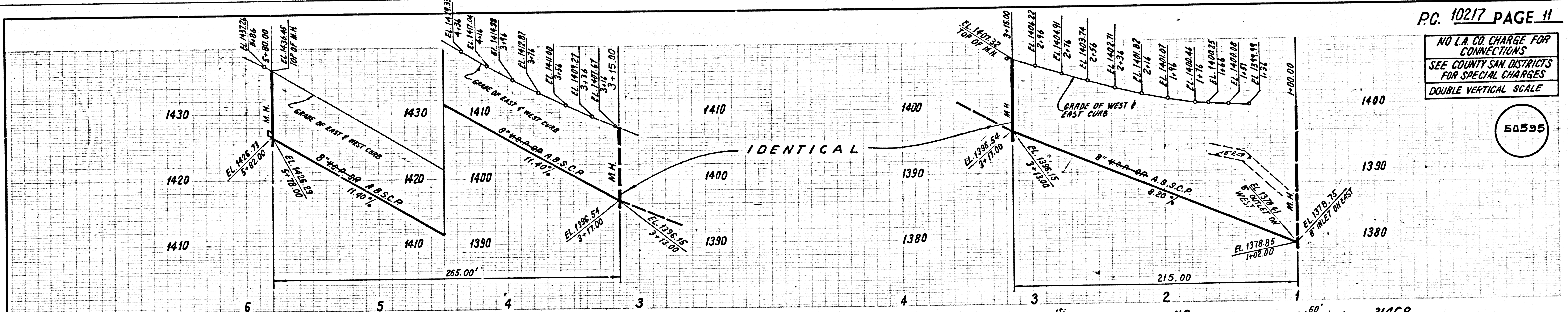
P.C. 10217 PAGE 9
NO L.A. CO. CHARGE FOR CONNECTIONS
SEE COUNTY SAN DISTRICTS FOR SPECIAL CHARGES
DOUBLE VERTICAL SCALE

P.C. 10217 PAGE 10
NO L.A. CO. CHARGE FOR CONNECTIONS
SEE COUNTY SAN DISTRICTS FOR SPECIAL CHARGES
DOUBLE VERTICAL SCALE

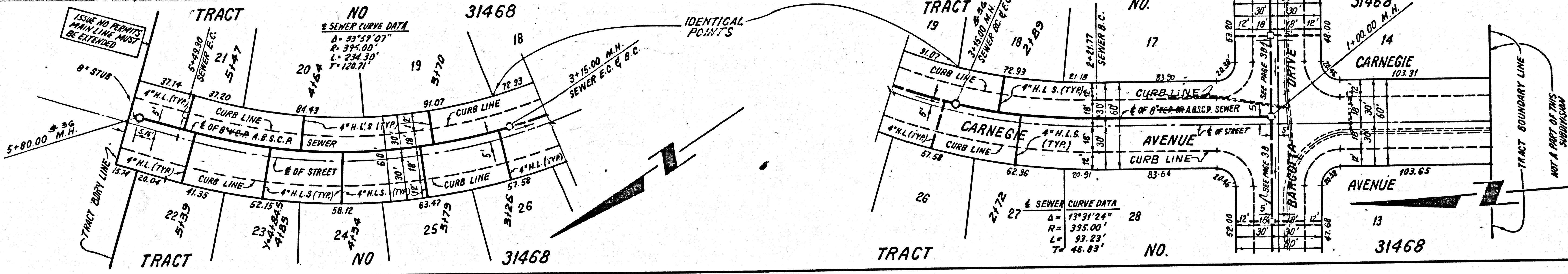
2 T1501 C9 8A11C DN T1ART

NO L.A. CO. CHARGE FOR CONNECTIONS
SEE COUNTY SAN DISTRICTS FOR SPECIAL CHARGES
DOUBLE VERTICAL SCALE

50395



PARCEL 3 OF P.M. 1021 RECORDED AS GRANT OF WATER AND CERTIFICATE OF COMPLIANCE ON JUNE 28, 1928 AS INST. NO. 78-20330



© 1951 P.C. 8841E ON TRACT