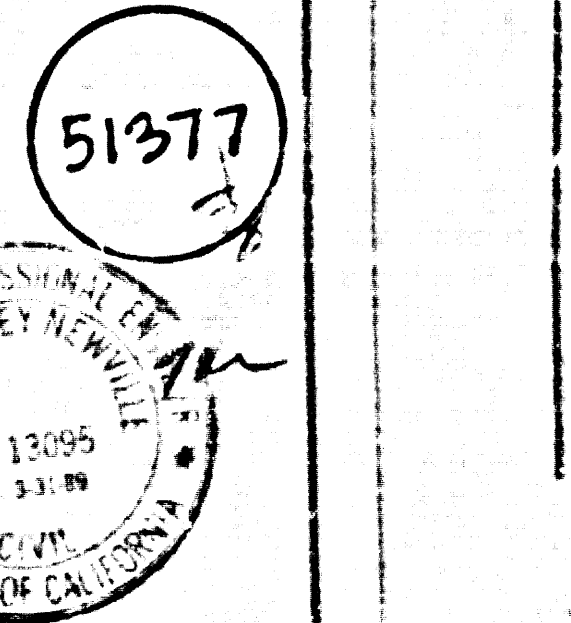


**SANITARY SEWERS**  
TO BE CONSTRUCTED IN

**TRACT NO 33159**  
**PRIVATE CONTRACT NO. 10223**  
INDEX **A-93**  
W.S. 62  
3 SHEETS, 6 PAGES

SCALE: VERT. 1" = 4' HORIZ. 1" = 40'  
JANUARY 1928  
PREPARED IN THE OFFICES OF  
**ENGINEERING SERVICE CORPORATION**  
CULVER CITY, CALIF. TEL. 151-1228  
BY: *[Signature]*  
REG. C. E. No. 13055



**GENERAL NOTES:**

1. ELEVATIONS ARE IN FEET ABOVE U.S.C. & G.S. SEA LEVEL DATUM OF 1929.
2. NO REVISIONS SHALL BE MADE IN THESE PLANS WITHOUT THE APPROVAL OF THE COUNTY ENGINEER.
3. NO REPRESENTATIVE OF THE COUNTY ENGINEER WILL SURVEY OR LAY OUT ANY PORTION OF THE WORK.
4. GRADES TO WHICH THE PROPERTY IS TO BE CONSTRUCTED ARE SHOWN ON PLANS AND PROFILES. GRADE POINTS FOR TOP OF CURBS, CENTER LINE OF STREETS, OR CENTER LINE OF ALLEYS ARE SHOWN BY CIRCLES ON PROFILES. AT ALL POINTS BETWEEN DESIGNATED POINTS IN A GRADE SHALL BE ESTABLISHED SO AS TO CONFORM TO A STRAIGHT LINE. THERE SHALL BE TWENTY (20) FEET POINTS.
5. THE PRIVATE ENGINEER SHALL FURNISH THE COUNTY ENGINEER WITH GRADE SHEETS AND STATIONING FOR ALL HOUSE LATERALS AND "T" MANHOLES AND SHALL PROVIDE STAKES FOR LINE AND POINT LOCATIONS WITHIN THE PROPERTY. ALL HOUSE LATERALS AND "T" MANHOLES SHALL BE CONSTRUCTED IN A STRAIGHT ALIGNMENT AT RIGHT ANGLES TO THE MAIN LINE SEWER EXCEPT AS SHOWN ON THE PLANS. HOUSE LATERALS FROM "T" MANHOLES SHALL NOT HAVE AN ANGLE OF LESS THAN 45° WITH THE MAIN LINE SEWER. ANY CHANGE IN ALIGNMENT SHALL BE REQUESTED IN WRITING BY THE PRIVATE ENGINEER.
6. THE PRIVATE ENGINEER SHALL FURNISH THE HOUSE LATERAL DEPTH AT THE PROPERTY LINE BELOW THE TOP OF CURB ELEVATION FOR EACH HOUSE LATERAL ON THE GRADE SHEET.
7. BEFORE WORK CAN BE STARTED, THE CONTRACTOR MUST OBTAIN A PERMIT TO EXCAVATE IN COUNTY STREETS FROM THE L.A. COUNTY ROAD DEPT., DISTRICT OFFICE NO. 8, AND PAY A FEE TO THE COUNTY ENGINEER, 500 SOUTH VERMONT AVENUE, LOS ANGELES, CALIF. TO COVER THE COST OF CONSTRUCTION, INSPECTION AND RECORD PLANS.
8. IF WORK IS TO BE DONE IN STATE HIGHWAYS A PERMIT MUST BE OBTAINED FROM THE STATE OF CALIFORNIA, DIVISION OF HIGHWAYS, 100 SIXTH STREET, LOS ANGELES, CALIFORNIA.
9. APPROVAL OF THIS PLAN BY THE COUNTY OF LOS ANGELES DOES NOT CONSTITUTE A REPRESENTATION AS TO THE ACCURACY OF THE LOCATION OF OR THE EXIST. SIZE OR NUMBER OF ANY UNDERGROUND UTILITY PIPE OR STRUCTURE WITHIN THE LIMITS OF THE PROJECT. THIS NOTE APPLIES TO ALL PAGES.
10. REFER TO SECTION 1041 OF THE STANDARD SPECIFICATIONS REGARDING SAFETY ORDERS.
11. PRIOR TO THE ISSUANCE OF THE PERMIT FOR SEWER CONSTRUCTION PERMIT THE CONTRACTOR SHALL OBTAIN AND FILE WITH THE COUNTY ENGINEER COPIES OF A PERMIT TO EXCAVATE IN COUNTY STREETS FROM THE LOS ANGELES COUNTY ROAD DEPARTMENT, A PERMIT FOR OPERATIONS AND TRENCHES FROM THE STATE OF CALIFORNIA, DIVISION OF INDUSTRIAL SAFETY AND A CERTIFICATE OF WORKERS' COMPENSATION INSURANCE WITH THE STATE OF CALIFORNIA DIVISION OF COUNTY ENGINEER, 500 SOUTH VERMONT AVENUE, LOS ANGELES, CALIFORNIA. THESE PERMITS SHALL BE OBTAINED PRIOR TO CANCELLATION OF POLICY.

**CONSTRUCTION NOTES:**

1. WORK SHALL BE CONSTRUCTED ACCORDING TO THE STANDARD SPECIFICATIONS FOR PUBLIC WORKS CONSTRUCTION (1928) (REVISED) DATED SEP. 21, 1928.
2. THE CONTRACTOR SHALL NOTIFY THE SUPERINTENDING ENGINEER-PUBLIC WORKS BY TELEPHONE (921-2000) AT LEAST TWENTY-FOUR HOURS BEFORE STARTING ANY WORK UNDER THIS CONTRACT.
3. HOUSE LATERALS TO BE CONSTRUCTED WITH INVERTS AT PROPERTY LINE 8 FEET BELOW CURB GRADE EXCEPT AS NOTED.
4. WYE OR TEE BRANCHES MAY BE USED FOR CONNECTIONS TO MAINLINE SEWERS EXCEPT AS NOTED.
5. ALL STRUCTURES SHALL BE EITHER BRICK MANHOLES PER S-2 OR PRECAST CONCRETE MANHOLES PER S-3, EXCEPT AS NOTED.
6. PROVIDE STAKES ON THE PROPERTY LINE OR PROPERTY LINES PRODUCED AT RIGHT ANGLES TO THE SEWER LINE AT THE CENTER LINE OF EACH MANHOLE.
7. MANHOLE TOPS IN UNIMPROVED RIGHTS OF WAY TO BE SIX INCHES ABOVE FINISHED GRADE.
8. WITHIN CLAY PIPE JOINTS SHALL BE TYPE "D" OR "D" PER STANDARD SPECIFICATIONS SECTION 208.2.
9. IF A POWER POLE IS WITHIN THREE FEET OF THE SEWER, THE SEWER SHALL BE ENCASED PER S-2L CASE 2, TWO FEET ON EACH SIDE FROM THE POINT OF INTERFERENCE.
10. IF DURING THE COURSE OF CONSTRUCTION IT IS DETERMINED THAT THERE IS LESS THAN FOUR FEET OF COVER OVER THE TOP OF A MAIN LINE OR HOUSE LATERAL SEWER WHICH IS NOT INDICATED ON THE PLANS THE PIPE SHALL BE ENCASED PER S-2L CASE 2 UNLESS OTHERWISE APPROVED BY THE COUNTY ENGINEER.
11. ALL JOINTS BETWEEN CAST IRON PIPE AND WITHIN CLAY PIPE SHALL BE MADE WITH A RUBBER SLEEVE JOINT, TYPE "D" OR "D" WITH RUBBER GASKETS IF NECESSARY PER STANDARD SPECIFICATIONS, SECTION 208.4.
12. SEWERS TO BE TESTED FOR LEAKAGE PER SECTION 208.14 OF THE STANDARD SPECIFICATIONS AND SPECIAL PROVISIONS.
13. REINFORCE ALL TRENCHES WITHIN PAVED AREAS TO MEET L.A. COUNTY ROAD DEPT. OR CALIFORNIA STATE HIGHWAY REQUIREMENTS IN ACCORDANCE WITH PERMITS.
14. FULL COMPLIANCE WITH SECTION 208.15 OF THE SPECIAL PROVISIONS WILL BE REQUIRED FOR BACKFILL IN STREETS. CERTIFICATION OF BACKFILL, COMPACTION AND SAND EQUIVALENTS BY A QUALIFIED, REGISTERED TESTING LABORATORY SHALL BE PROVIDED BY THE PERMITTEE PRIOR TO THE ISSUANCE OF A CERTIFICATE OF PARTIAL ACCEPTANCE.
15. SPECIAL BACKFILL IN EASEMENT CONSTRUCTION (A) BACKFILL TRENCH AND REPLACE OTHER BACKFILL TO AS TO ACHIEVE THE NATURAL OR FINISHED GRADES AND SLOPES SHOWN ON THE GRADING PLAN APPROVED BY THE DEVELOPER BY THE HEALTH AND SAFETY DIVISION. (B) ALL BACKFILL, NO MATTER WHERE PLACED SHALL BE COMPACTED TO A MINIMUM OF 90% OF MAXIMUM DENSITY PER A.S.T.M. STD. METHOD OR TEST METHOD AS APPROVED. ACCEPTABLE CERTIFICATION OF SUCH COMPACTION SHALL BE SUBMITTED TO THE SUPERINTENDING ENGINEER-PUBLIC WORKS.

THE FOLLOWING LATEST REVISED STANDARD PLANS ON FILE IN THE OFFICE OF THE COUNTY ENGINEER SHALL APPLY IN THE CONSTRUCTION OF THIS PROJECT:

LEGEND	S-1
MINIMUM PUBLIC SAFETY REQUIREMENTS	S-2
BRICK MANHOLES	S-3
STANDARD MANHOLE STEP	S-4
BEDDING FOR SEWER PIPE	S-5
CRADING AND ENCASMENT	S-6
WYE OR TEE SUPPORT	S-7
ALLOY BRASS BRANCH WROTH	S-8
JOCKING MANHOLE FRAMES AND COVERS	S-9
NON-REINFORCED PRECAST CONCRETE MANHOLES	S-10
BEDDING FOR A.S.T.M. PRECAST CONCRETE PIPE	S-11

COUNTY OF LOS ANGELES, CALIFORNIA  
THOMAS A. TIDEMANSON, DEPARTMENT OF PUBLIC WORKS, APPROVED: *[Signature]* 7/24/26  
CHARLES W. CARY, CHIEF ENGINEER, APPROVED: *[Signature]* 7/20/26  
CHECKED: *[Signature]* 7/23/26  
REG. C. E. NO. 14071  
Santa Clarita Valley BLDG. DIST. 82

S.M. CL 3325 ELEV. 1296.147  
LACS B.M. MON. IN NE COR. CONC. BASE CITY OF LA  
W & P TOWER W 24 1/2' 1907' W. ADJACENT CH. RD. 6  
S. 1/4 IN W. 1/4 Q. 34 S. 1/4 W. 1/4 (M. 104-1 1965)  
NEW HALL QUAD. 19 78

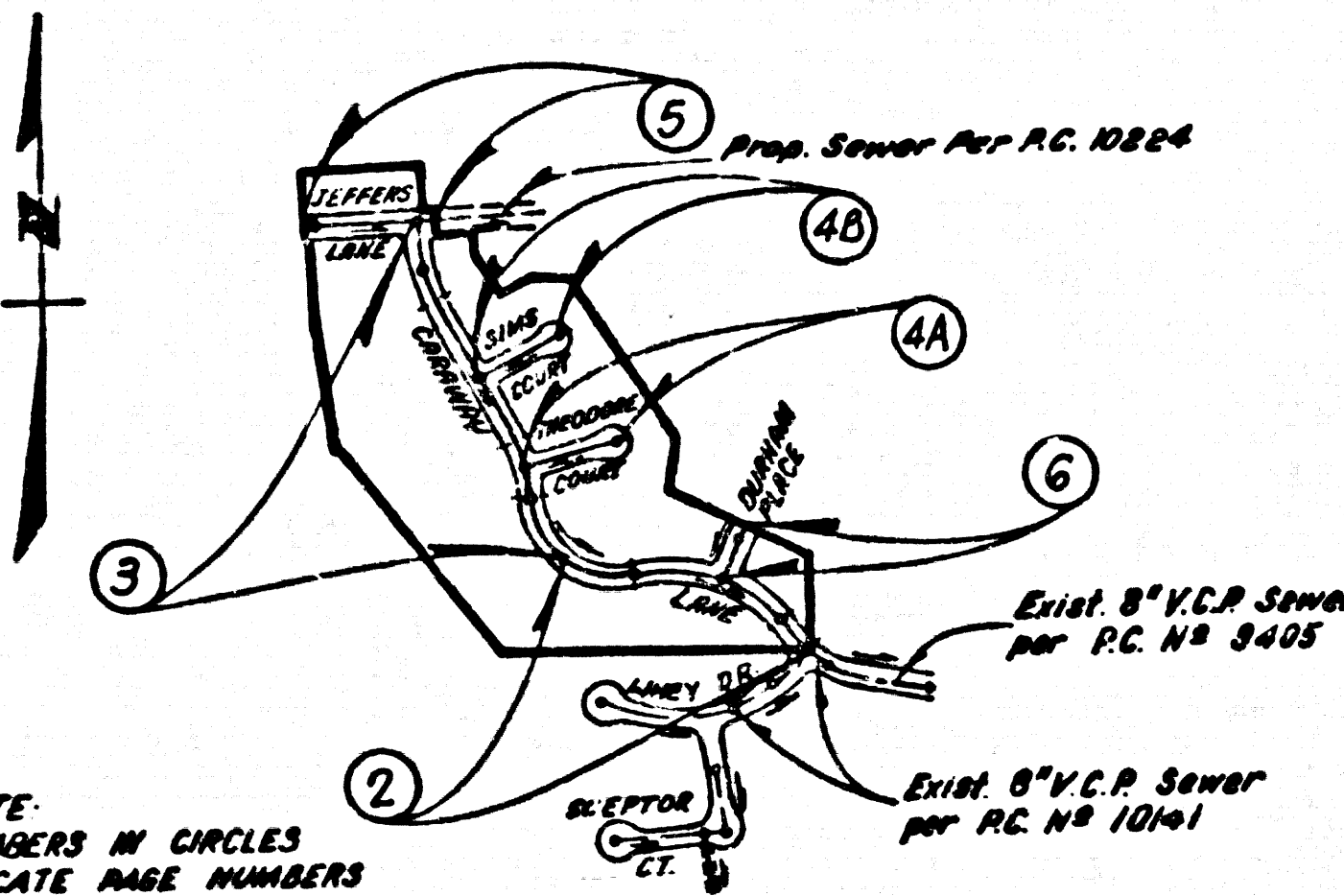
**DOUBLE SCALE**

**GENERAL NOTES: (CONT.)**  
2. ALL REFERENCES ON THIS PLAN TO THE COUNTY ENGINEER, THE ROAD DEPARTMENT, OF THE 1920 CONTROL DISTRICT SHALL APPLY TO THOSE APPROPRIATE SECTIONS OF THE DEPARTMENT OF PUBLIC WORKS.

- CONSTRUCTION NOTES: (CONT.)**
16. WYE BRANCHES ONLY MAY BE USED FOR CONNECTIONS TO MAIN LINE SEWER IF A.B.S.C.P. IS USED.
  17. ALL JOINT BETWEEN CAST IRON PIPE AND A.B.S.C.P. SHALL BE MADE WITH APPROVED FITTINGS.
  18. FULL COMPLIANCE WITH PART IV OF THE SPECIAL PROVISIONS IS REQUIRED FOR THE INSTALLATION OF A.B.S.C.P. 15" PIPE AND A.S. 5" 1/2 WALL HOUSE LATERALS.
  19. MANHOLE WATER STOP GASKETS AND CLAMPS ARE REQUIRED FOR THE CONNECTION OF A.S. COMPOSITE PIPE TO MANHOLE STRUCTURES.
  20. A.S. SOLID WALL PIPE MUST BE USED FOR WYE AND HOUSE LATERAL CONNECTIONS TO A.B.S. COMPOSITE MAINLINE SEWER PIPE.
  21. 8 DEGREE DEFLECTION COUPLERS SHALL BE USED TO ACCOMPLISH RADIUS OF CURVATURE LESS THAN 300'.
  22. A.S. COMPOSITE PIPE SHALL BE BEDDED IN CONFORMANCE WITH THE TABLE IN SECTION 8-21 OF PART IV OF SPECIAL PROVISIONS.

NO CONNECTION FOR THE DISPOSAL OF INDUSTRIAL WASTES SHALL BE MADE TO SEWERS SHOWN ON THESE DRAWINGS UNTIL A PERMIT FOR INDUSTRIAL WASTEWATER DISCHARGE HAS BEEN ISSUED BY THE SANITATION DISTRICTS FOR SAID CONNECTION.

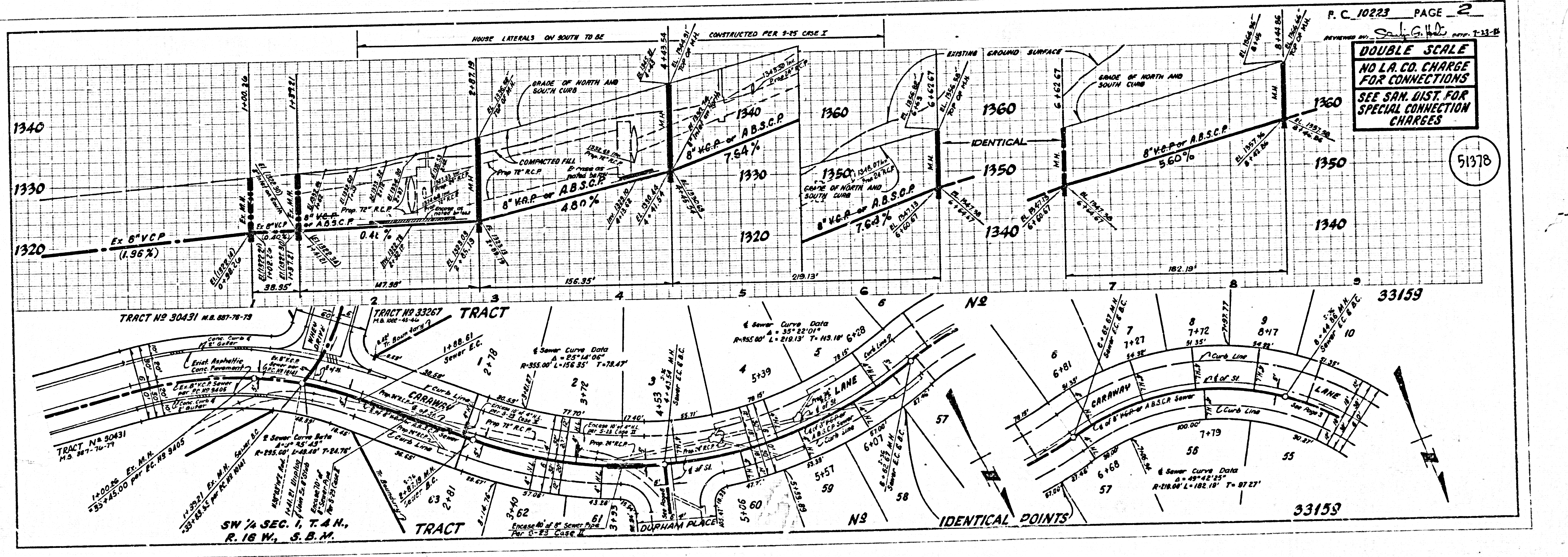
BEFORE BREAKING INTO OR CONSTRUCTION ON A COUNTY SANITATION DISTRICT SEWER AND PRIOR TO FINAL ACCEPTANCE OF THE PROJECT, SANITATION DISTRICT INSPECTOR SHALL BE NOTIFIED BY PHONE 813-962-8605 SO THAT REQUIRED INSPECTION CAN BE MADE.



**INDEX MAP**  
**TRACT NO 33159**  
P.C. NO 10223  
Scale: 1" = 800'

**BACKWATER VALVES MAY BE REQUIRED FOR THE FOLLOWING LOTS:**  
LOTS 2, 3, 4, 6, 7, 8, 10, 11, 12, 15, 16, 17, 19, 20, 21, 22, 26, 29, 30, 31, 32, 35,  
36, 37, 44, 45, 46, 53, 55, 56, 57, 61, 62.

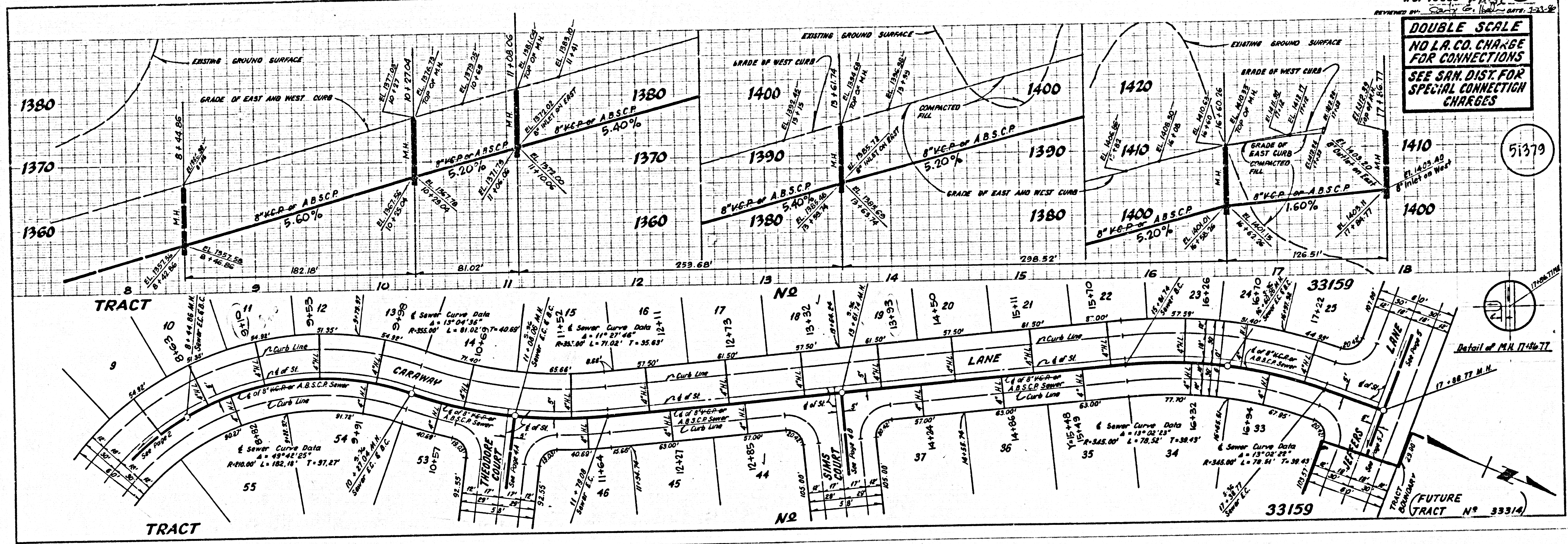
**ISSUE NO HOUSE CONNECTION PERMITS ON PAGE 5 FOR LOTS 26 THROUGH 32 UNTILL OUTLET SEWER P.C. 10224 IS ACCEPTED FOR PUBLIC USE BY THE COUNTY OF LOS ANGELES**



**DOUBLE SCALE**  
**NO L.A. CO. CHARGE FOR CONNECTIONS**  
**SEE SAN. DIST. FOR SPECIAL CONNECTION CHARGES**

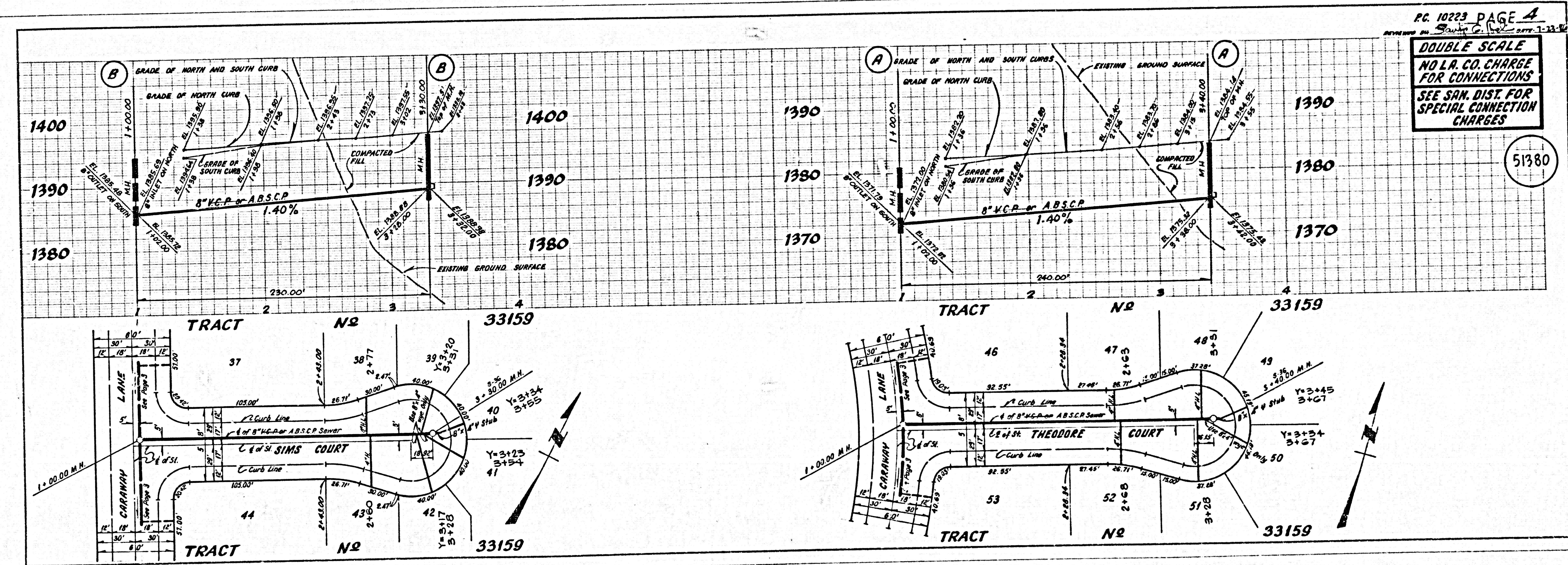
51378

**DOUBLE SCALE**  
NO L.A. CO. CHARGE  
FOR CONNECTIONS  
SEE SAN. DIST. FOR  
SPECIAL CONNECTION  
CHARGES



51379

**DOUBLE SCALE**  
NO L.A. CO. CHARGE  
FOR CONNECTIONS  
SEE SAN. DIST. FOR  
SPECIAL CONNECTION  
CHARGES



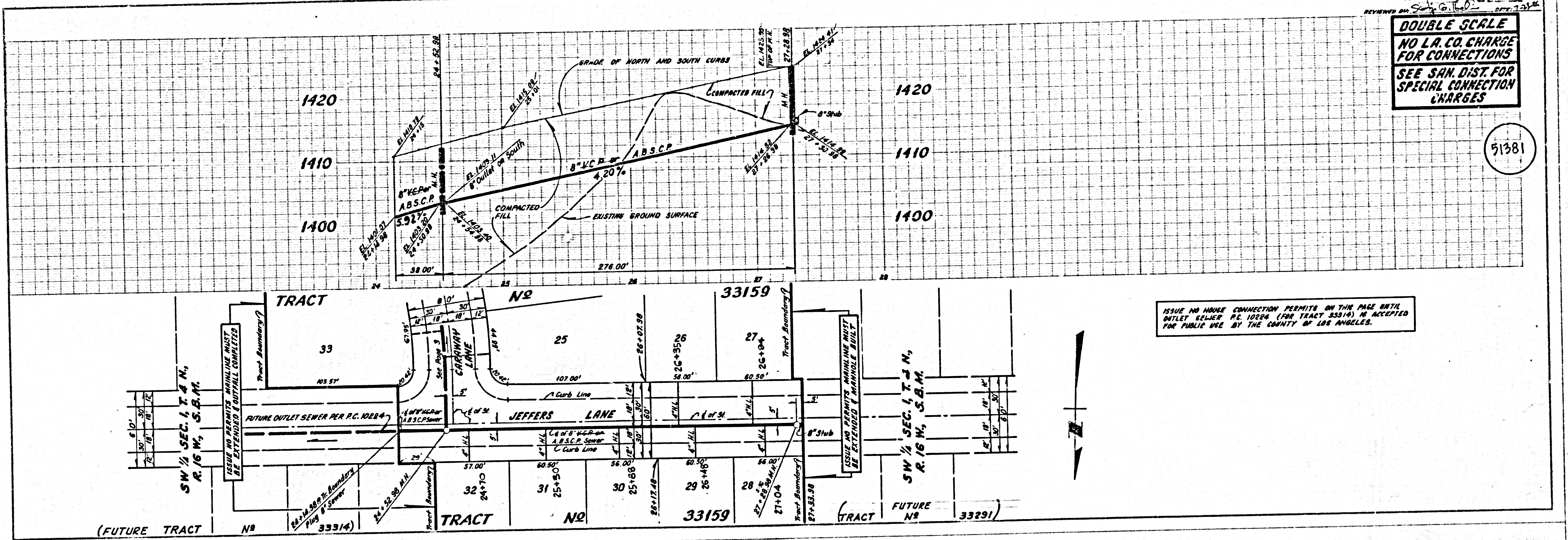
51380

3

P.C. 10223 PAGE 5  
REVIEWED BY: [Signature] DATE: 7-28-84

**DOUBLE SCALE**  
NO L.A. CO. CHARGE  
FOR CONNECTIONS  
SEE SAN. DIST. FOR  
SPECIAL CONNECTION  
CHARGES

51381



P.C. 10223 PAGE 6  
REVIEWED BY: [Signature] DATE: 7-28-84

**DOUBLE SCALE**  
NO L.A. CO. CHARGE  
FOR CONNECTIONS  
SEE SAN. DIST. FOR  
SPECIAL CONNECTION  
CHARGES

51382

