

# SANITARY SEWERS

TO BE CONSTRUCTED IN

## TRACT NO. 34365

### PRIVATE CONTRACT NO. 10238

(517-17) - D4

W.S. 279-097

2 SHEETS, 4 PAGES

50562

SCALE: VERT. 1" = 8' HORIZ. 1" = 20'

PREPARED IN THE OFFICES OF

PFEILER & ASSOCIATES ENGINEERS  
1559 W. COMMONWEALTH AV., FULLERTON, CA. 92633

BY: *Robert J. Pfeiler*  
REC. E. No. 18071

THE FOLLOWING LATEST REVISED STANDARD PLANS ON FILE IN THE OFFICE OF THE COUNTY ENGINEER SHALL APPLY IN THE CONSTRUCTION OF THIS PROJECT:

1. 12" DIA. MANHOLE	5-1
2. 18" DIA. MANHOLE	5-2
3. 24" DIA. MANHOLE	5-3
4. 30" DIA. MANHOLE	5-4
5. 36" DIA. MANHOLE	5-5
6. 42" DIA. MANHOLE	5-6
7. 48" DIA. MANHOLE	5-7
8. 54" DIA. MANHOLE	5-8
9. 60" DIA. MANHOLE	5-9
10. 66" DIA. MANHOLE	5-10
11. 72" DIA. MANHOLE	5-11
12. 78" DIA. MANHOLE	5-12
13. 84" DIA. MANHOLE	5-13
14. 90" DIA. MANHOLE	5-14
15. 96" DIA. MANHOLE	5-15
16. 102" DIA. MANHOLE	5-16
17. 108" DIA. MANHOLE	5-17
18. 114" DIA. MANHOLE	5-18
19. 120" DIA. MANHOLE	5-19
20. 126" DIA. MANHOLE	5-20
21. 132" DIA. MANHOLE	5-21
22. 138" DIA. MANHOLE	5-22
23. 144" DIA. MANHOLE	5-23
24. 150" DIA. MANHOLE	5-24
25. 156" DIA. MANHOLE	5-25
26. 162" DIA. MANHOLE	5-26
27. 168" DIA. MANHOLE	5-27
28. 174" DIA. MANHOLE	5-28
29. 180" DIA. MANHOLE	5-29
30. 186" DIA. MANHOLE	5-30
31. 192" DIA. MANHOLE	5-31
32. 198" DIA. MANHOLE	5-32
33. 204" DIA. MANHOLE	5-33
34. 210" DIA. MANHOLE	5-34
35. 216" DIA. MANHOLE	5-35
36. 222" DIA. MANHOLE	5-36
37. 228" DIA. MANHOLE	5-37
38. 234" DIA. MANHOLE	5-38
39. 240" DIA. MANHOLE	5-39
40. 246" DIA. MANHOLE	5-40
41. 252" DIA. MANHOLE	5-41
42. 258" DIA. MANHOLE	5-42
43. 264" DIA. MANHOLE	5-43
44. 270" DIA. MANHOLE	5-44
45. 276" DIA. MANHOLE	5-45
46. 282" DIA. MANHOLE	5-46
47. 288" DIA. MANHOLE	5-47
48. 294" DIA. MANHOLE	5-48
49. 300" DIA. MANHOLE	5-49
50. 306" DIA. MANHOLE	5-50
51. 312" DIA. MANHOLE	5-51
52. 318" DIA. MANHOLE	5-52
53. 324" DIA. MANHOLE	5-53
54. 330" DIA. MANHOLE	5-54
55. 336" DIA. MANHOLE	5-55
56. 342" DIA. MANHOLE	5-56
57. 348" DIA. MANHOLE	5-57
58. 354" DIA. MANHOLE	5-58
59. 360" DIA. MANHOLE	5-59
60. 366" DIA. MANHOLE	5-60
61. 372" DIA. MANHOLE	5-61
62. 378" DIA. MANHOLE	5-62
63. 384" DIA. MANHOLE	5-63
64. 390" DIA. MANHOLE	5-64
65. 396" DIA. MANHOLE	5-65
66. 402" DIA. MANHOLE	5-66
67. 408" DIA. MANHOLE	5-67
68. 414" DIA. MANHOLE	5-68
69. 420" DIA. MANHOLE	5-69
70. 426" DIA. MANHOLE	5-70
71. 432" DIA. MANHOLE	5-71
72. 438" DIA. MANHOLE	5-72
73. 444" DIA. MANHOLE	5-73
74. 450" DIA. MANHOLE	5-74
75. 456" DIA. MANHOLE	5-75
76. 462" DIA. MANHOLE	5-76
77. 468" DIA. MANHOLE	5-77
78. 474" DIA. MANHOLE	5-78
79. 480" DIA. MANHOLE	5-79
80. 486" DIA. MANHOLE	5-80
81. 492" DIA. MANHOLE	5-81
82. 498" DIA. MANHOLE	5-82
83. 504" DIA. MANHOLE	5-83
84. 510" DIA. MANHOLE	5-84
85. 516" DIA. MANHOLE	5-85
86. 522" DIA. MANHOLE	5-86
87. 528" DIA. MANHOLE	5-87
88. 534" DIA. MANHOLE	5-88
89. 540" DIA. MANHOLE	5-89
90. 546" DIA. MANHOLE	5-90
91. 552" DIA. MANHOLE	5-91
92. 558" DIA. MANHOLE	5-92
93. 564" DIA. MANHOLE	5-93
94. 570" DIA. MANHOLE	5-94
95. 576" DIA. MANHOLE	5-95
96. 582" DIA. MANHOLE	5-96
97. 588" DIA. MANHOLE	5-97
98. 594" DIA. MANHOLE	5-98
99. 600" DIA. MANHOLE	5-99
100. 606" DIA. MANHOLE	5-100

COUNTY OF LOS ANGELES, CALIFORNIA

STEPHEN J. KOONCE, COUNTY ENGINEER      CHARLES W. CARRY, CHIEF ENGINEER

APPROVED: *John D. Hagan* 12-21-84      APPROVED: *Robert J. Pfeiler* 12-21-84

CHECKED: *John J. Lill* 1-22-85

REC. E. No. 32149

SANTA CLARITA VALLEY MGD. DIST. 8.2

## DOUBLE SCALE

### CONSTRUCTION NOTES CONT'D:

- FULL COMPLIANCE WITH PART IV OF THE SPECIAL PROVISIONS IS REQUIRED FOR THE INSTALLATION OF A.B.S. COMPOSITE PIPE.
- MANHOLE WATER STOP CASINGS & FLASHES ARE REQUIRED FOR THE CONNECTION OF A.B.S. COMPOSITE PIPE TO MANHOLE STRUCTURES.
- A.B.S. BRICK WALL PIPE MUST BE USED FOR VIE & HOUSE LATERAL CONNECTIONS TO A.B.S. COMPOSITE MANHOLE SEWER PIPE.
- A.B.S. COMPOSITE PIPE SHALL BE BEDDED IN CONFORMANCE WITH THE TABLE IN SECTION B.3.1 OF PART IV OF THE SPECIAL PROVISIONS.
- THREE DEGREE DEFLECTION COEFFICIENTS ARE REQUIRED FOR RADII OF CURVATURE LESS THAN 350 FEET FROM VISION USING 8" A.B.S. C.P.
- NO CONNECTIONS FOR THE DISPOSAL OF INDUSTRIAL WASTE IS ALLOWED IF A.B.S. COMPOSITE PIPE IS USED.
- SEWER LINE CHAIRS SHALL NOT BE ACHIEVED BY PULLING OF JOINTS OR BRUELING PIPE RINGS WHEN USING PLASTIC PIPE INCLUDING A.B.S. COMPOSITE PIPE.

REVISION NO. 1      DATE 8-20-85  
 PAGE 2A - REMOVED ONE 6" M.L.; PAGE 2B - REMOVED 2 6" M.L.;  
 PAGE 4A - REMOVED ONE 6" M.L.; PAGE 4B - REMOVED TWO 6" M.L.  
 PAGE 5 - ADDED ONE 6" M.L.  
 APPROVED: *John J. Lill* 8-21-85  
 DEPARTMENT OF PUBLIC WORKS

REVISION NO. 2      DATE 12-17-84  
 PAGE 2A - ADDED ONE 6" M.L.; PAGE 2B - ADDED FOUR 6" M.L.'S;  
 PAGE 4A - ADDED ONE 6" M.L.; PAGE 4B - ADDED THREE 6" M.L.'S.  
 APPROVED: *John J. Lill* 12-17-84  
 OFFICE OF COUNTY ENGINEER

REVISION NO. 3      DATE 7-2-84  
 LOWERED FINISHED SURFACE & F.L. OF PIPE BY 1'1" ON PAGE 4A, 4B & 4C.  
 CHANGED MARKS OF GRADE, PAGES 4B & 4C.  
 LOWERED FINISHED SURFACE, PAGE 4D - STA. 0+45 TO 2+48.93  
 APPROVED: *John J. Lill* 7-2-84  
 OFFICE OF COUNTY ENGINEER

NO CONNECTION FOR THE DISPOSAL OF INDUSTRIAL WASTE SHALL BE MADE TO SEWERS SHOWN ON THESE DRAWINGS UNTIL A PERMIT FOR INDUSTRIAL WASTEWATER DISCHARGE HAS BEEN ISSUED BY THE SANITATION DISTRICTS FOR SAID CONNECTION.

BEFORE BREAKING INTO OR CONSTRUCTION ON A COUNTY SANITATION DISTRICT SEWER AND PRIOR TO FINAL ACCEPTANCE OF THE PROJECT, SANITATION DISTRICT INSPECTOR SHALL BE NOTIFIED BY PHONE 818 - 962-8605 SO THAT REQUIRED INSPECTION CAN BE MADE.

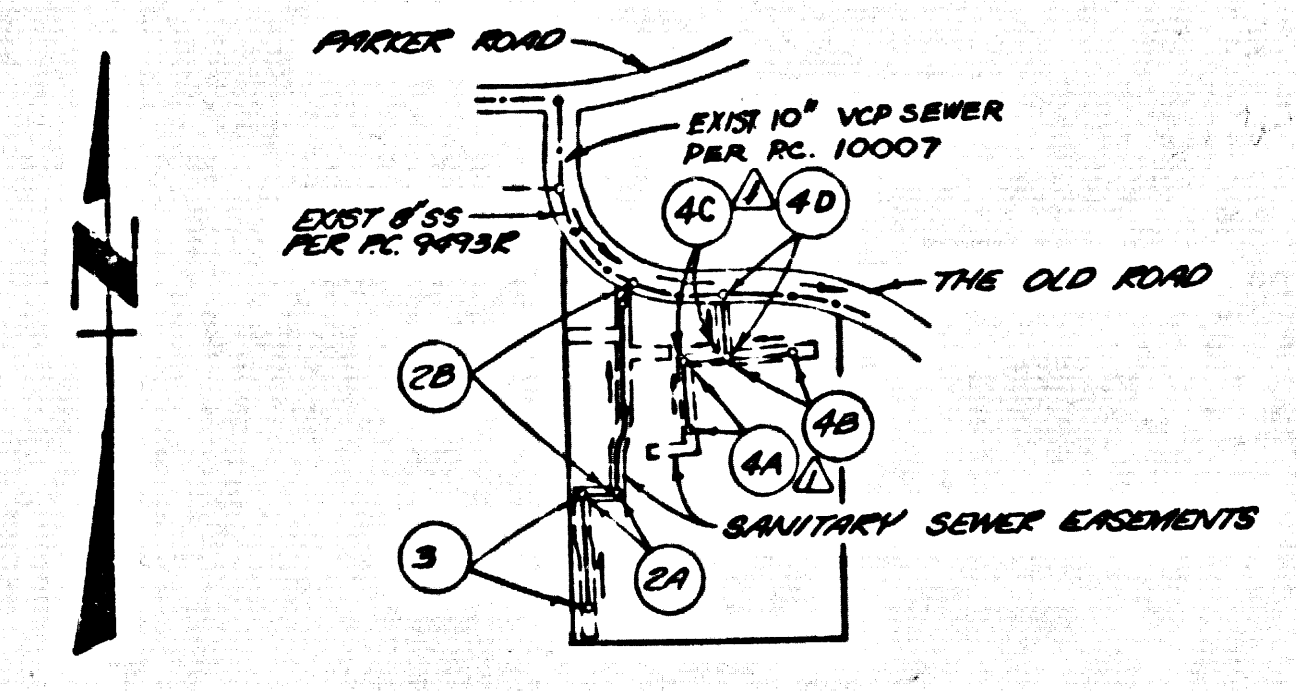
### GENERAL NOTES:

- ELEVATIONS ARE IN FEET ABOVE U.S.C. & G.S. SEA LEVEL DATUM OF 1988.
- NO REVISIONS SHALL BE MADE IN THESE PLANS WITHOUT THE APPROVAL OF THE COUNTY ENGINEER.
- NO REPRESENTATIVE OF THE COUNTY ENGINEER WILL SURVEY OR LAY OUT ANY PORTION OF THE WORK.
- GRADES TO WHICH THIS IMPROVEMENT IS TO BE CONSTRUCTED ARE SHOWN ON PLANS AND PROFILES. GRADE POINTS 7' OR MORE FROM CURVE CENTER LINE OF STREETS OR CENTER LINE OF ALLEYS ARE SHOWN BY CIRCLES ON PROFILES AT ALL POINTS BETWEEN DESIGNATED POINTS THE GRADE SHALL BE ESTABLISHED SO AS TO CONFORM TO A STRAIGHT LINE DRAWN BETWEEN SAID DESIGNATED POINTS.
- THE PRIVATE ENGINEER SHALL FURNISH THE COUNTY ENGINEER WITH GRADE SHEETS AND STATIONING FOR ALL HOUSE LATERALS AND "Y" OR "T" BRANCHES AND SHALL PROVIDE STAKES FOR THEM AT THEIR PROPER LOCATIONS WITH STATIONING PLAINLY MARKED. ALL HOUSE LATERALS SHALL BE CONSTRUCTED IN A STRAIGHT ALIGNMENT AT RIGHT ANGLES FROM THE MAIN LINE SEWER EXCEPT AS SHOWN ON THE PLANS. HOUSE LATERALS FROM CHIMNEYS SHALL NOT HAVE AN ANGLE OF LESS THAN 45° WITH THE MAIN LINE SEWER. ANY CHANGE IN ALIGNMENT SHALL BE REQUESTED IN WRITING BY THE PRIVATE ENGINEER.
- THE PRIVATE ENGINEER SHALL FURNISH THE HOUSE LATERAL DEPTH AT THE PROPERTY LINE BELOW THE TOP OF CURB ELEVATION FOR EACH HOUSE LATERAL ON THE GRADE SHEET.
- BEFORE WORK CAN BE STARTED, THE CONTRACTOR MUST OBTAIN A PERMIT TO EXCAVATE IN COUNTY STREETS FROM THE L.A. COUNTY ROAD DEPT. DISTRICT OFFICE NO. 2, AND PAY A FEE TO THE COUNTY ENGINEER AND B. VENOMONT AVENUE, LOS ANGELES, CA 90008 TO COVER THE COST OF CONSTRUCTION INSPECTION AND RECORD PLANS.
- WORK IS TO BE DONE IN A STATE HIGHWAY, A PERMIT MUST BE OBTAINED FROM THE STATE OF CALIFORNIA, DIVISION OF HIGHWAYS, 178 SOUTH SPRING STREET, LOS ANGELES, CALIFORNIA.
- APPROVAL OF THIS PLAN BY THE COUNTY OF LOS ANGELES DOES NOT CONSTITUTE A REPRESENTATION AS TO THE ACCURACY OF THE LOCATION OF OR THE EXISTENCE OR NON-EXISTENCE OF ANY UNDERGROUND UTILITY PIPE OR STRUCTURE WITHIN THE LIMITS OF THIS PROJECT. THIS NOTE APPLIES TO ALL PAGES.
- REFER TO SECTION 7.16.1 OF THE STANDARD SPECIFICATIONS, REGARDING SAFETY ORDERS.
- PRIOR TO THE ISSUANCE OF THE REQUIRED SEWER CONSTRUCTION PERMIT, THE CONTRACTOR SHALL OBTAIN AND FILE WITH THE COUNTY ENGINEER COPIES OF A PERMIT TO EXCAVATE IN COUNTY STREETS FROM THE LOS ANGELES COUNTY ROAD DEPARTMENT, A PERMIT FOR EXCAVATIONS AND TRENCHES FROM THE STATE OF CALIFORNIA DIVISION OF INDUSTRIAL SAFETY AND A CERTIFICATE OF WORKERS COMPENSATION INSURANCE WITH THE DEPARTMENT OF COUNTY ENGINEER, 560 SOUTH WENTWORTH, THE LOS ANGELES, CALIFORNIA 90008, NAMED AS THE CERTIFICATE HOLDER TO BE NOTIFIED 30 DAYS PRIOR TO CANCELLATION OF POLICY.

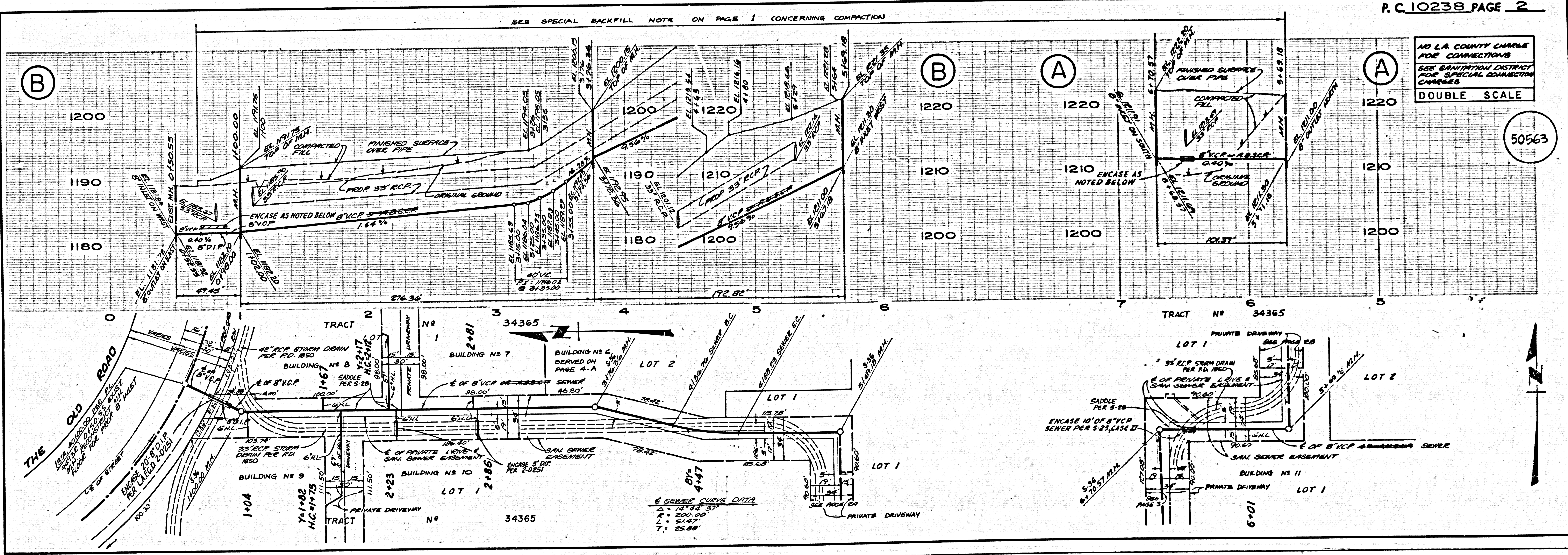
### CONSTRUCTION NOTES:

- WORK SHALL BE CONSTRUCTED ACCORDING TO THE STANDARD SPECIFICATIONS FOR PUBLIC WORKS CONSTRUCTION (1988 EDITION WITH 1983 SUPPLEMENTS) AND COUNTY ENGINEER SPECIAL PROVISIONS FOR THE CONSTRUCTION OF SANITARY SEWERS DATED SEPTEMBER 21, 1978. WORK SHALL BE PROSECUTED ONLY IN THE PRESENCE OF THE COUNTY ENGINEER.
- THE CONTRACTOR SHALL NOTIFY THE PROJECT MANAGEMENT DIVISION BY TELEPHONE 738-2188, AT LEAST TWENTY-FOUR HOURS BEFORE STARTING ANY WORK UNDER THIS CONTRACT.
- HOUSE LATERALS TO BE CONSTRUCTED WITH INVERTS AT PROPERTY LINE 8 FEET BELOW CURB GRADE EXCEPT AS NOTED.
- VIE OR TEE BRANCHES MAY BE USED FOR CONNECTIONS TO MAINLINE SEWERS EXCEPT AS NOTED.
- VIE BRANCHES SHALL BE USED FOR CONNECTIONS TO MAINLINE SEWERS IF A.B.S. C.P. IS USED.
- ALL STRUCTURES SHALL BE EITHER BRICK MANHOLES PER 5-3 OR PRECAST CONCRETE MANHOLES PER 5-38, EXCEPT AS NOTED.
- PROVIDE STAKES ON THE PROPERTY LINE OR PROPERTY LINES PRODUCED AT RIGHT ANGLES TO THE SEWER LINE AT THE CENTER LINE OF EACH MANHOLE.
- MANHOLE TOPS IN UNIMPROVED RIGHTS OF WAY TO BE SIX INCHES ABOVE FINISHED GRADE.
- WITHELD CLAY PIPE JOINTS SHALL BE TYPE "D" OR "E" PER STANDARD SPECIFICATIONS SECTION 308-2.
- IF A POWER POLE IS WITHIN THREE FEET OF THE SEWER, THE SEWER SHALL BE ENCASED PER 5-25, CASE 1, TWO FEET ON EACH SIDE FROM THE POINT OF INTERFERENCE.
- IF DURING THE COURSE OF CONSTRUCTION IT IS DETERMINED THAT THERE IS LESS THAN FOUR FEET OF COVER OVER THE TOP OF A MAIN LINE OR HOUSE LATERAL SEWER WHICH IS NOT INDICATED ON THE PLANS, THE PIPE SHALL BE ENCASED PER 5-25, CASE 1 UNLESS OTHERWISE APPROVED BY THE COUNTY ENGINEER.
- ALL JOINTS BETWEEN CAST IRON PIPE AND WITHELD CLAY PIPE SHALL BE MADE WITH A RUBBER SLEEVE JOINT, TYPE "D" OR "E" (WITH BUSHING IF NECESSARY) PER STANDARD SPECIFICATIONS, SECTION 308-3.
- ALL STRUCTURES SHALL BE TESTED FOR LEAKAGE PER SECTION 308-1.9 OF THE STANDARD SPECIFICATIONS AND SPECIAL PROVISIONS.
- RESURFACE ALL TRENCHES WITHIN PAVED AREAS TO MEET L.A. COUNTY ROAD DEPT. OR CALIFORNIA STATE HIGHWAY REQUIREMENTS IN ACCORDANCE WITH PERMITS.
- FULL COMPLIANCE WITH SECTION 308-1.3.3 OF THE SPECIAL PROVISIONS WILL BE REQUIRED FOR BACKFILL IN STREETS. CERTIFICATION OF BACKFILL COMPACTION AND SAND EQUIVALENTS BY A QUALIFIED, REGISTERED TESTING LABORATORY SHALL BE PROVIDED BY THE PERMITTEE PRIOR TO THE ISSUANCE OF A CERTIFICATE OF PARTIAL ACCEPTANCE.
- SPECIAL BACKFILL IN EASEMENT CONSTRUCTION: (A) BACKFILL TRENCH AND REPLACE OTHER EARTH SO AS TO ACHIEVE THE INTENT OF FINISHED GRADES AND SLOPES SHOWN ON THE GRADING PLAN APPROVED FOR THIS DEVELOPMENT BY THE BUILDING AND SAFETY DIVISION; (B) ALL BACKFILL AND EARTH REPLACED SHALL BE COMPACTED TO A MINIMUM OF 90% OF MAXIMUM DENSITY PER A.S.T.M. STD. METHOD OF TEST D955 BY AN APPROVED, ACCEPTABLE CERTIFICATION OF SUCH COMPACTION SHALL BE SUBMITTED TO THE PROJECT MANAGEMENT DIVISION.

B.M. CL 5789 ELEV. 1184.640  
 U.S.C. & G.S. FROM AT NW COR. BRIDGE  
 AD. 51770 17 FT. N. CL. PARCELS ED &  
 20 S. GOLDEN STATE HWY. QUAD 192B  
 METEORICAL QUAD. 192B



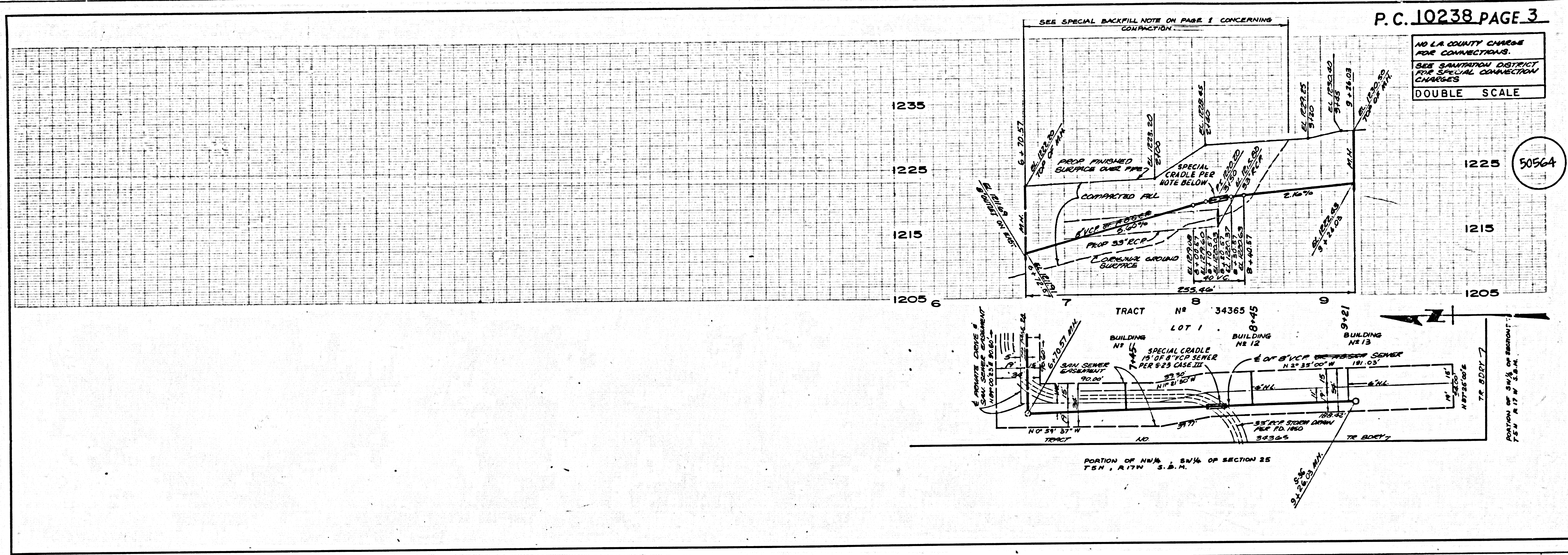
INDEX MAP  
 P.C. 10238 TRACT NO. 34365  
 SCALE 1" = 600'



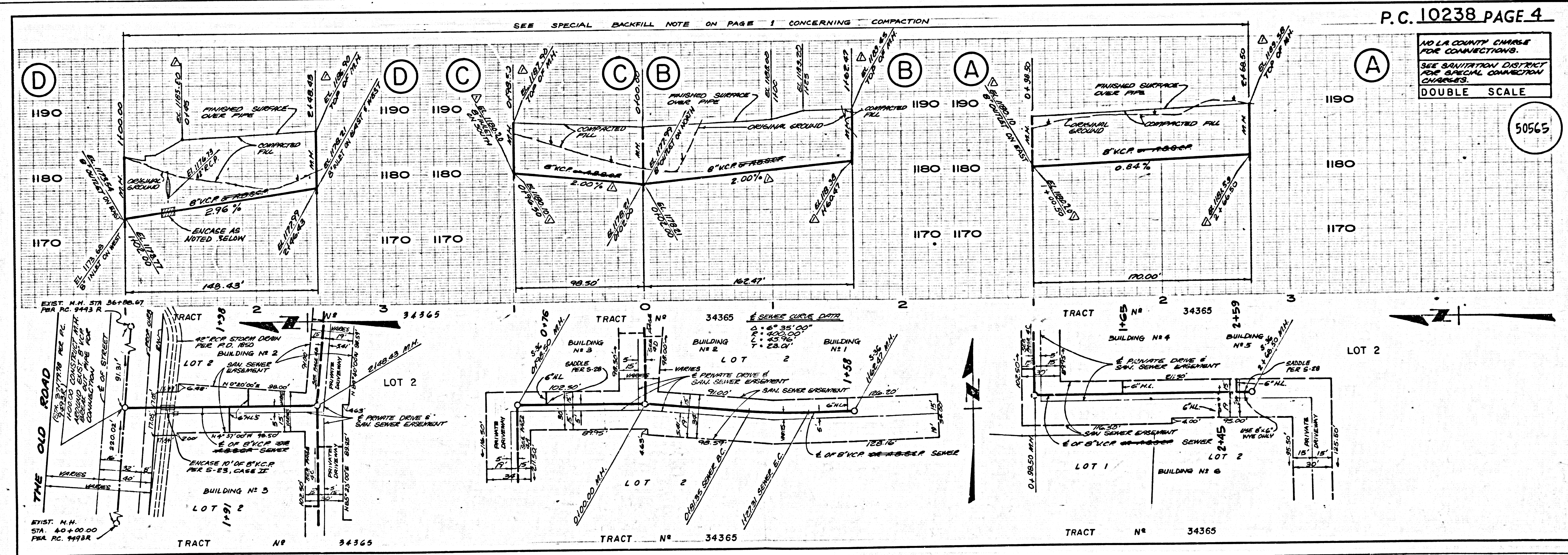
BC 10538

SCALE ON TRACT





BC 10528



2024E ON T3ARI