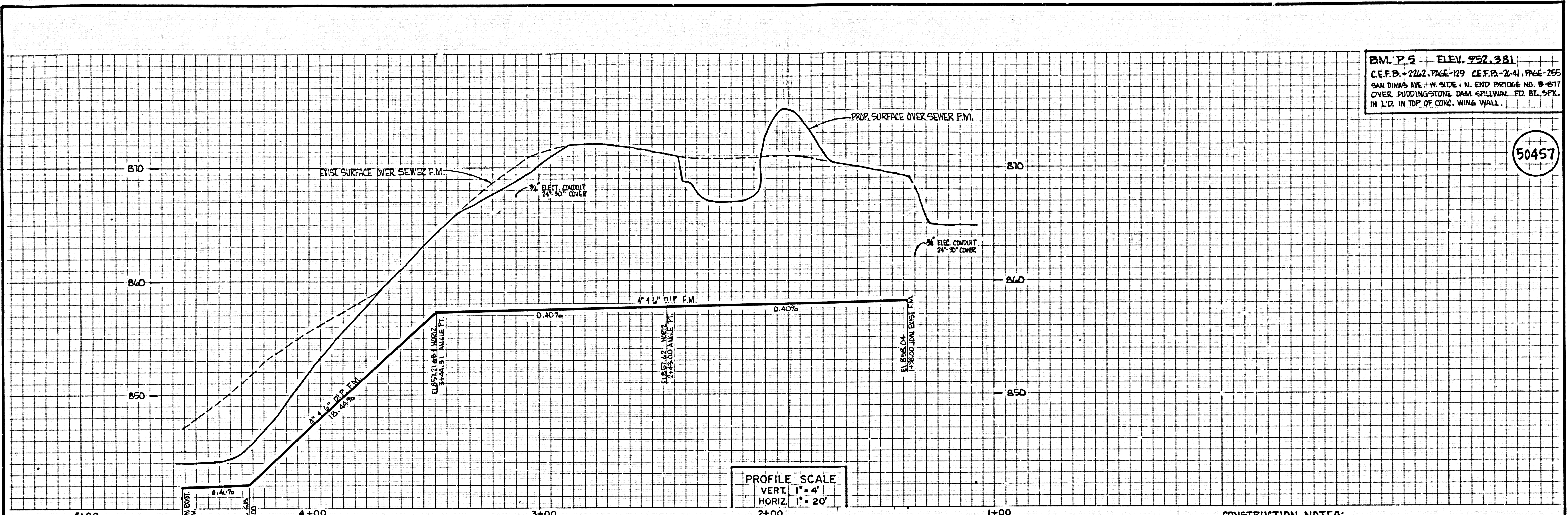
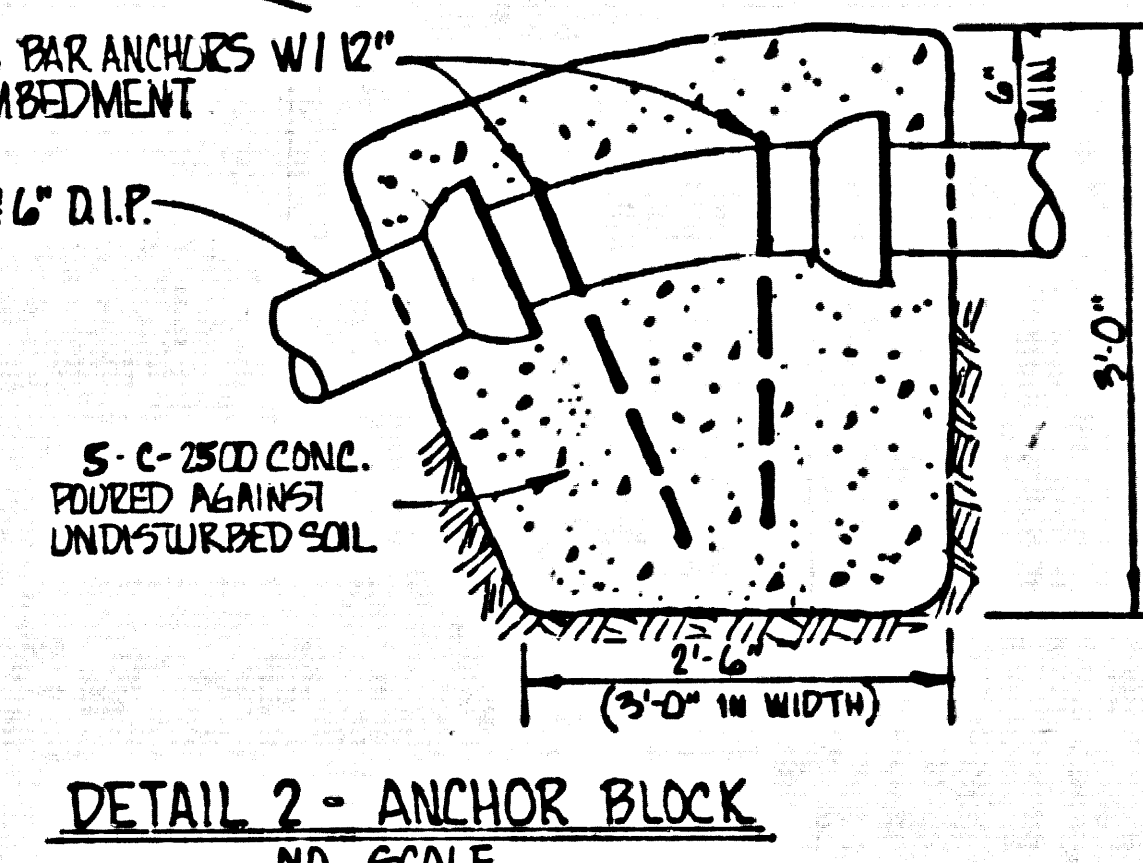
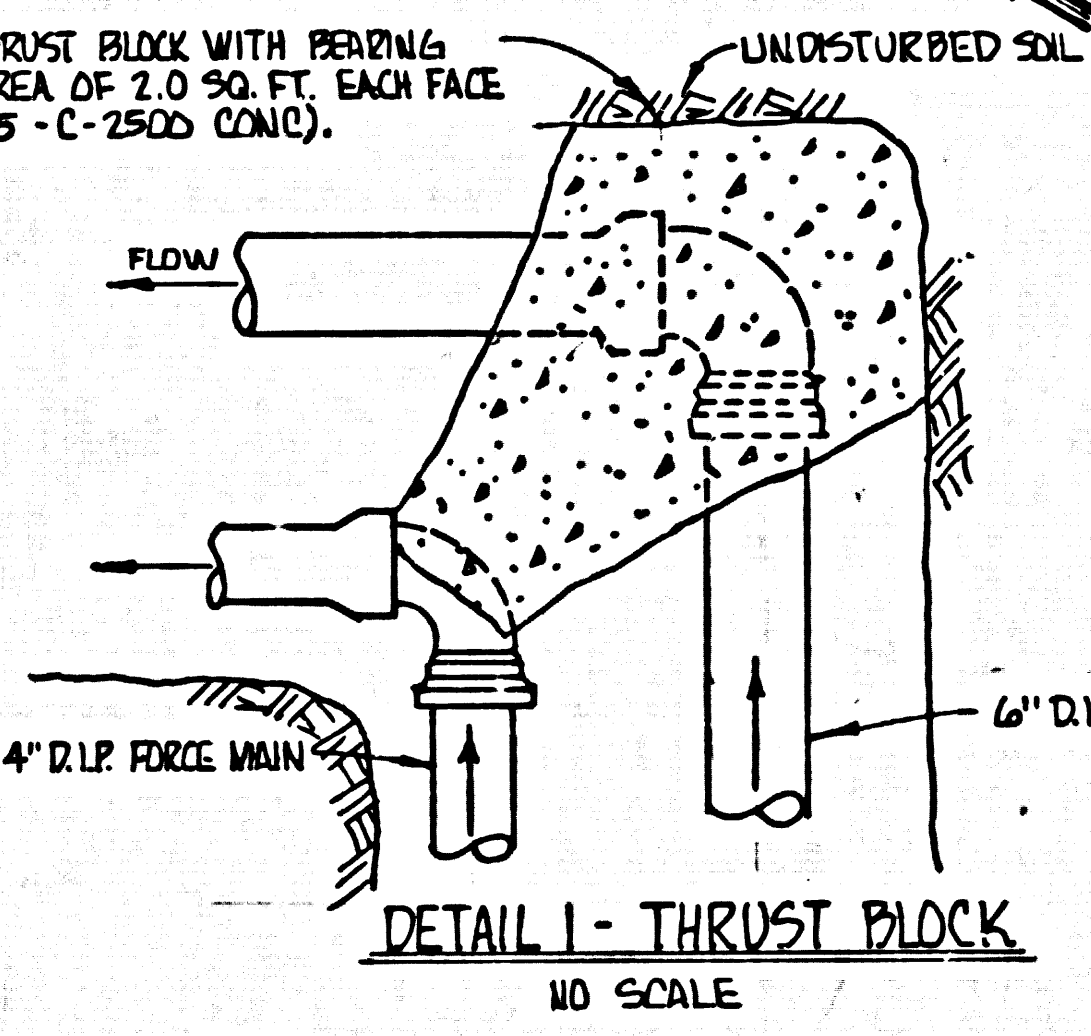
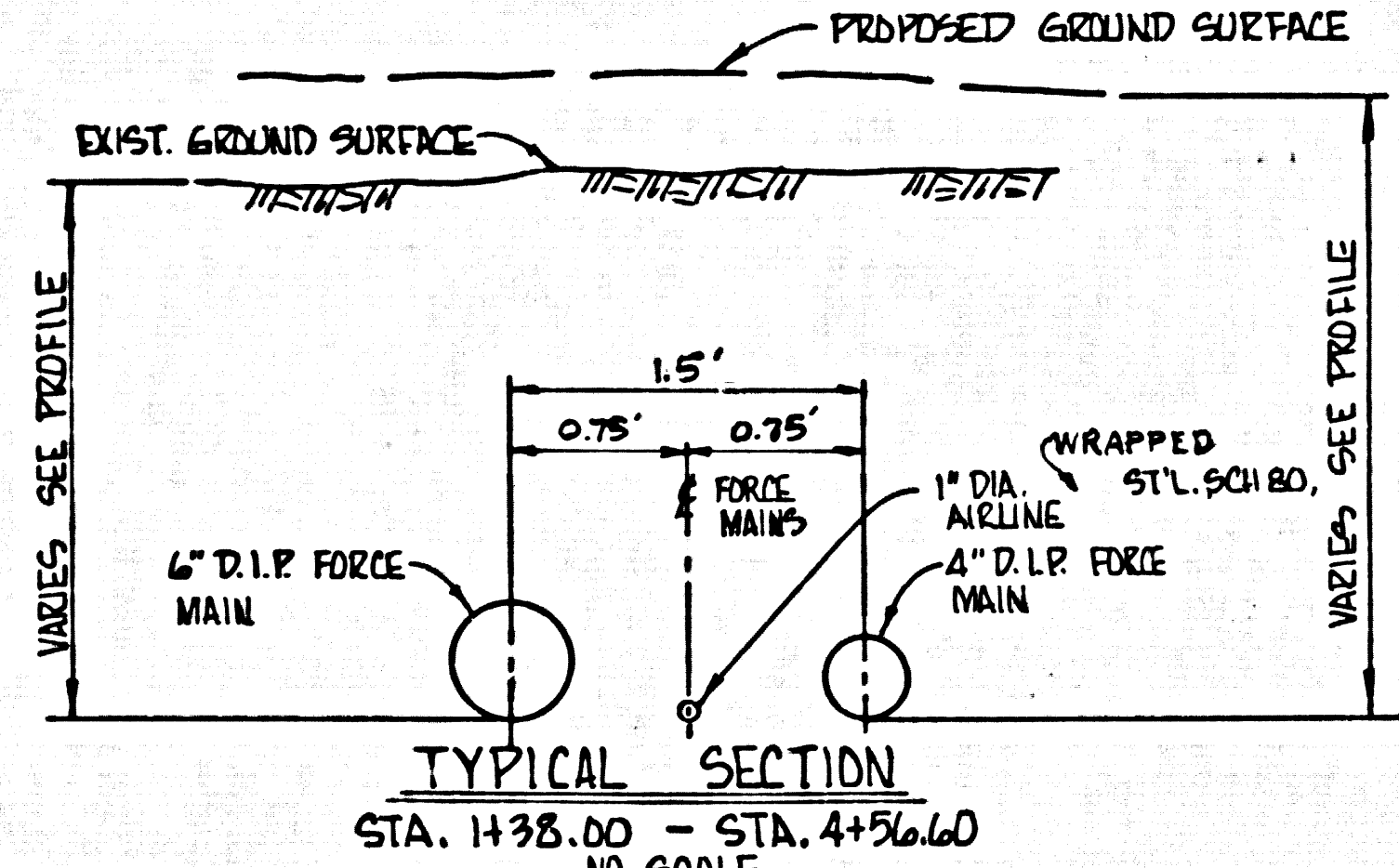
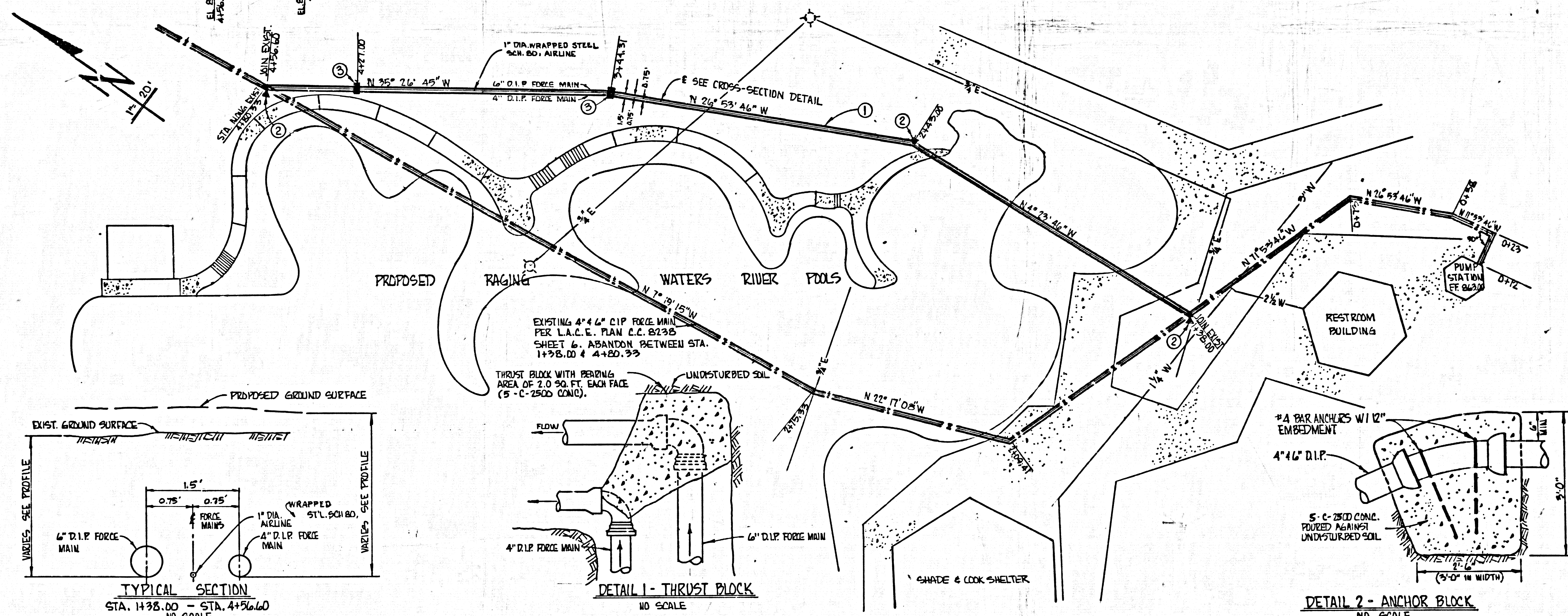


B.M. P 5 - ELEV. 952.381  
 C.E.F.B. - 2262, PAGE - 129 C.E.F.B. - 2241, PAGE - 295  
 SAN DIMAS AVE. 1/4 M. S.W. COR. N. END BRIDGE NO. B-677  
 OVER PUDDINGSTONE DAM SPILLWAY. FD. ST. 5PK.  
 IN L.I.D. IN TOP OF CONC. WING WALL.

50457



PROFILE SCALE  
 VERT. 1" = 4'  
 HORIZ. 1" = 20'



- CONSTRUCTION NOTES:
1. CONSTRUCT 6" AND 4" DIA. DUCTILE IRON PIPE, CLASS 52, SEWER FORCE MAIN AND 1" DIAMETER WRAPPED STEEL PIPE, SCHEDULE 80, AIRLINE INCLUDING 150° WWP FITTINGS.
  2. CONSTRUCT THRUST BLOCK WITH MIN. BEARING OF 25F. FOURED AGAINST UNDISTURBED SOIL PER DETAIL 1.
  3. CONSTRUCT CONCRETE ANCHOR PER DETAIL 2.
  4. SEWER FORCE MAIN SHALL BE TESTED PER L.A.C.E. REQUIREMENTS.
  5. CONTRACTOR SHALL VERIFY LOCATION AND DEPTHS OF EXISTING UTILITIES BY CHECKING PLANS LOCATED AT THE PARK MAINTENANCE OFFICE.
  6. CONTRACTOR TO MAINTAIN SERVICE AT ALL TIMES.
  7. CONTRACTOR TO CONTACT COUNTY ENGINEER SEWER MAINTENANCE SECTION 24 HRS. PRIOR TO ANY ACTION INVOLVING PUMP STATION @ 213 798-2534.
- ISSUE NO PERMITS TO FORCE MAINS

CASH CONTRACT NO. 10243  
 APPROVED *James T. Donnoy* 3/16/84  
 SAN DIMAS REGIONAL ENGINEER DATE  
 LOS ANGELES COUNTY ENGINEER - FACILITIES  
 CONSOLIDATED SEWER MAINTENANCE DISTRICT  
 REVIEWED BY: \_\_\_\_\_ DATE \_\_\_\_\_



**CARL W. DONNOYER & ASSOCIATES**  
 CIVIL ENGINEERS LAND SURVEYORS  
 1433 EAST ALOSTA AVENUE, SUITE E • GLENORA, CALIF. 91740 • (818) 963-9710

*James T. Donnoy* 3-2-84  
 DENNIS DONAHUE RE 21537 CARL W. DONNOYER LS 3548

**RAGING WATERS RIVER POOLS  
 SEWER FORCE MAIN REALIGNMENT**

PREPARED FOR BARCUS-JONES, GENERAL CONTRACTORS 139 S. GOLDEN MALL BURBANK, CA 91502 818 848-2401	JOB NO. DOWN BY DATE SHEET 84-18 DTD 3-1-84 1 OF 1 SCALE CHECK BY REVISED SHEETS 1" = 20'
--	--

JN 84-18

RAGING WATERS RIVER POOLS

CONSOLIDATED SEWER MAINTENANCE DISTRICT