

SANITARY SEWERS

TO BE CONSTRUCTED IN TR. NO. 43074

PRIVATE CONTRACT NO. 10244

A-64 6 SHEETS, 12 PAGES

50539

SCALE: VERT. 1" = 8' HORIZ. 1" = 40'

MARCH, 1984

PREPARED IN THE OFFICES OF SIKAND ENGINEERING ASSOCIATES

15970 BURBANK BLVD. VAN NUYS CALIFORNIA 91411 (213) 787-8750

REG. C.E. No. 21897

THE FOLLOWING LATEST REVISED STANDARD PLANS ON FILE IN THE OFFICE OF THE COUNTY ENGINEER SHALL APPLY IN THE CONSTRUCTION OF THIS PROJECT.

STANDARD PLAN FOR SANITARY SEWERS	5-1
STANDARD MANHOLE	5-2
STANDARD MANHOLE STEP	5-3
STANDARD MANHOLE FRAMING AND COVER	5-4
STANDARD MANHOLE FRAMING AND COVER - RECTANGULAR	5-5
STANDARD MANHOLE FRAMING AND COVER - RECTANGULAR SMALLER	5-6
STANDARD MANHOLE FRAMING AND COVER - RECTANGULAR SMALLER	5-7
STANDARD MANHOLE FRAMING AND COVER - RECTANGULAR SMALLER	5-8
STANDARD MANHOLE FRAMING AND COVER - RECTANGULAR SMALLER	5-9
STANDARD MANHOLE FRAMING AND COVER - RECTANGULAR SMALLER	5-10
STANDARD MANHOLE FRAMING AND COVER - RECTANGULAR SMALLER	5-11
STANDARD MANHOLE FRAMING AND COVER - RECTANGULAR SMALLER	5-12
STANDARD MANHOLE FRAMING AND COVER - RECTANGULAR SMALLER	5-13
STANDARD MANHOLE FRAMING AND COVER - RECTANGULAR SMALLER	5-14
STANDARD MANHOLE FRAMING AND COVER - RECTANGULAR SMALLER	5-15
STANDARD MANHOLE FRAMING AND COVER - RECTANGULAR SMALLER	5-16
STANDARD MANHOLE FRAMING AND COVER - RECTANGULAR SMALLER	5-17
STANDARD MANHOLE FRAMING AND COVER - RECTANGULAR SMALLER	5-18
STANDARD MANHOLE FRAMING AND COVER - RECTANGULAR SMALLER	5-19
STANDARD MANHOLE FRAMING AND COVER - RECTANGULAR SMALLER	5-20

COUNTY OF LOS ANGELES, CALIFORNIA
STEPHEN J. KOONCE, COUNTY ENGINEER
CHARLES M. CARRY, CHIEF ENGINEER

APPROVED [Signature] 5-10-84

CHECKED [Signature] 5-10-84

SANTA CLARITA VALLEY BLDG. DIST. B-2

CONTRACTORS NOTE:

THE EXISTENCE AND LOCATION OF ANY UNDERGROUND UTILITY PIPES OR STRUCTURE SHOWN ON THESE PLANS ARE OBTAINED BY A SEARCH OF AVAILABLE RECORDS. THE CONTRACTOR IS RESPONSIBLE TO TAKE PRECAUTIONARY MEASURES TO PROTECT UTILITY LINES SHOWN AND OTHER LINES NOT OF RECORD OR NOT SHOWN ON THESE PLANS.

NO CONNECTION FOR THE DISPOSAL OF INDUSTRIAL WASTES SHALL BE MADE TO SEWERS SHOWN ON THESE DRAWINGS UNTIL A PERMIT FOR INDUSTRIAL WASTEWATER DISCHARGE HAS BEEN ISSUED BY THE SANITATION DISTRICTS FOR SAID CONNECTION.

BEFORE BREAKING INTO OR CONSTRUCTION ON A COUNTY SANITATION DISTRICT SEWER AND PRIOR TO FINAL ACCEPTANCE OF THE PROJECT, SANITATION DISTRICT INSPECTOR SHALL BE NOTIFIED BY PHONE 906-8609 TO THAT REQUIRED INSPECTION CAN BE MADE.

CONSTRUCTION NOTES CONT'D:

- 4A. WYE BRANCHES ONLY MAY BE USED FOR CONNECTIONS TO MAINLINE SEWER IF A.B.S.C.P. IS USED.
- 11A. ALL JOINTS BETWEEN CAST IRON PIPE & A.B.S.C.P. SHALL BE MADE WITH APPROVED FITTINGS.
- 16. FULL COMPLIANCE WITH PART IV OF THE SPECIAL PROVISIONS IS REQUIRED FOR THE INSTALLATION OF A.B.S. COMPOSITE PIPE.
- 17. MANHOLE WATER STOP GASKETS AND CLAMPS ARE REQUIRED FOR THE CONNECTION OF A.B.S. COMPOSITE PIPE TO MANHOLE STRUCTURES.
- 18. A.B.S. SOLID WALL PIPE MUST BE USED FOR WYE AND HOUSE LATERAL CONNECTIONS TO A.B.S. COMPOSITE MAINLINE SEWER PIPE.
- 19. A.B.S. COMPOSITE PIPE SHALL BE BEDDED IN CONFORMANCE WITH THE TABLE IN SECTION B-3.1 OF PART IV OF THE SPECIAL PROVISIONS.
- 20. 3-DEGREE DEFLECTION COUPLERS SHALL BE USED TO ACCOMPLISH RADIUS OF CURVATURE LESS THAN 300'.

DOUBLE SCALE

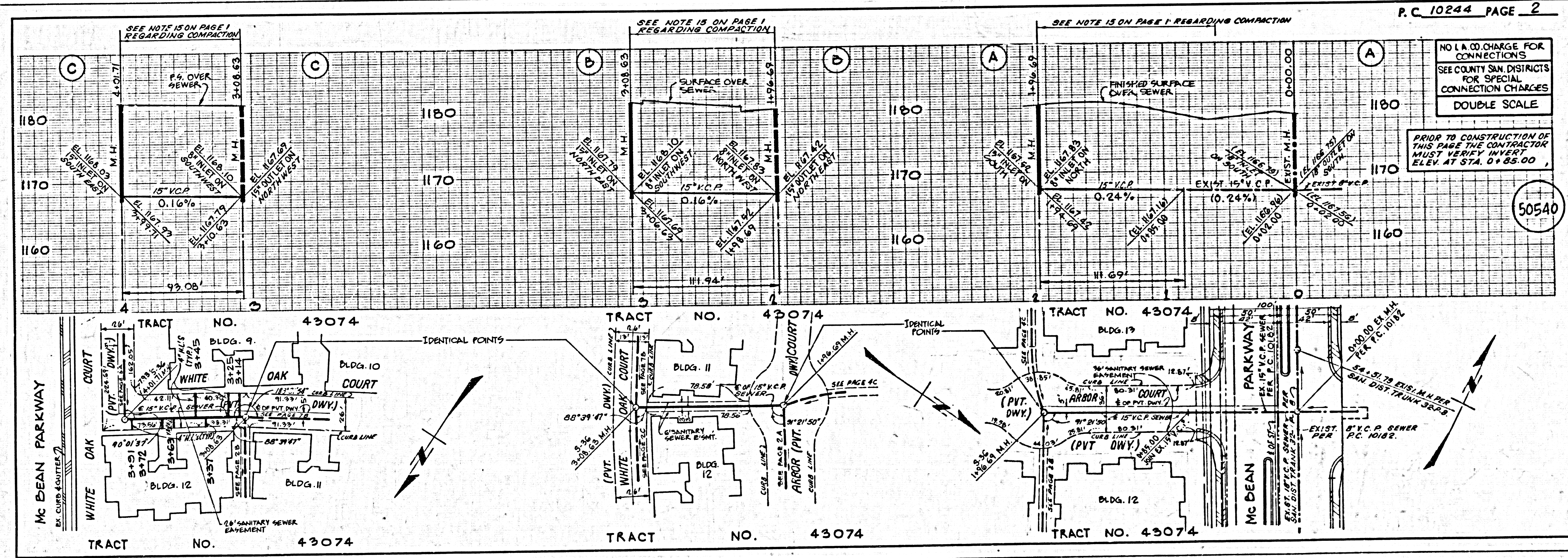
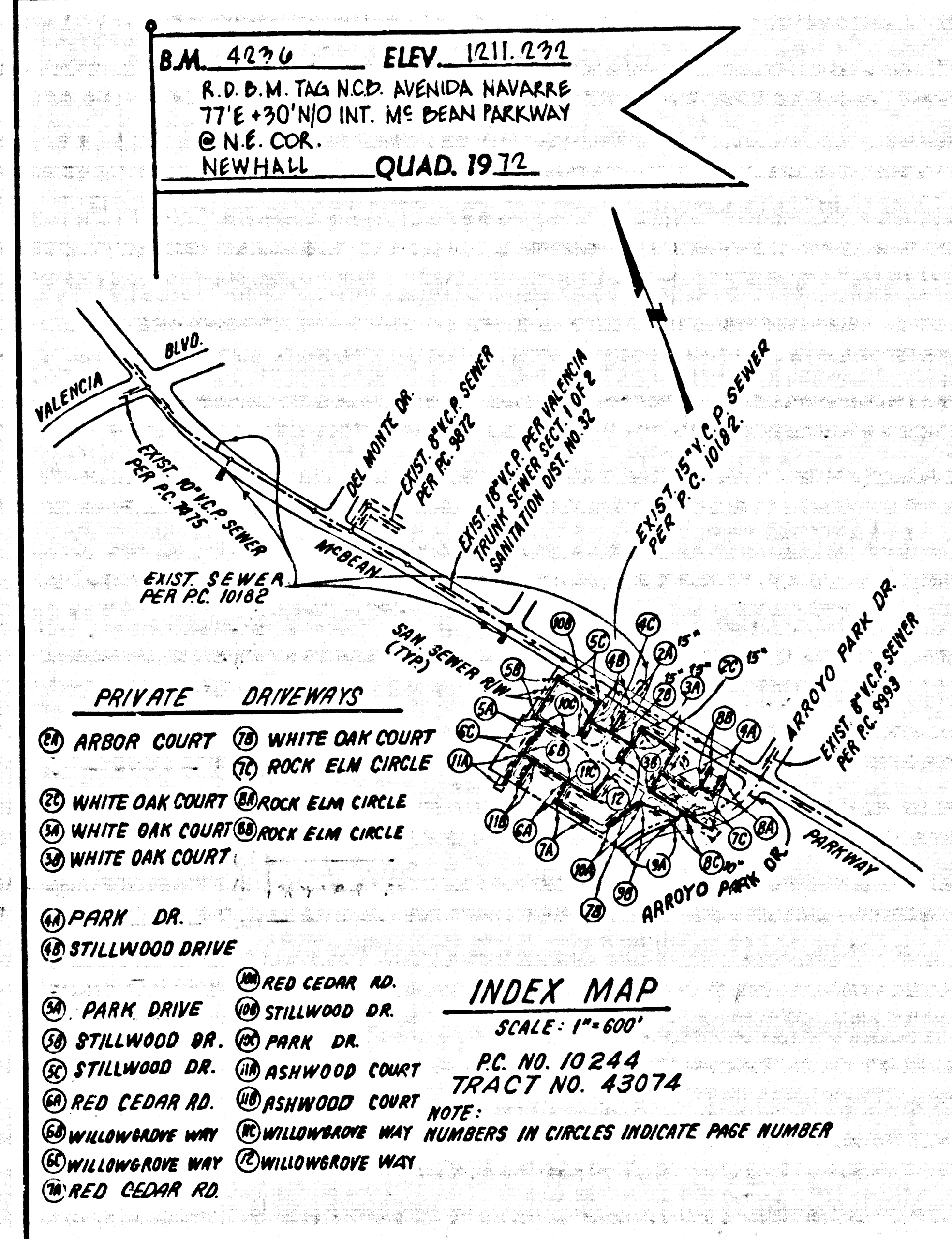
ISSUE NO HOUSE CONNECTIONS PERMITS UNTIL THE OUTLET SEWER P.C. 10182 IS ACCEPTED FOR PUBLIC USE BY THE COUNTY OF LOS ANGELES.

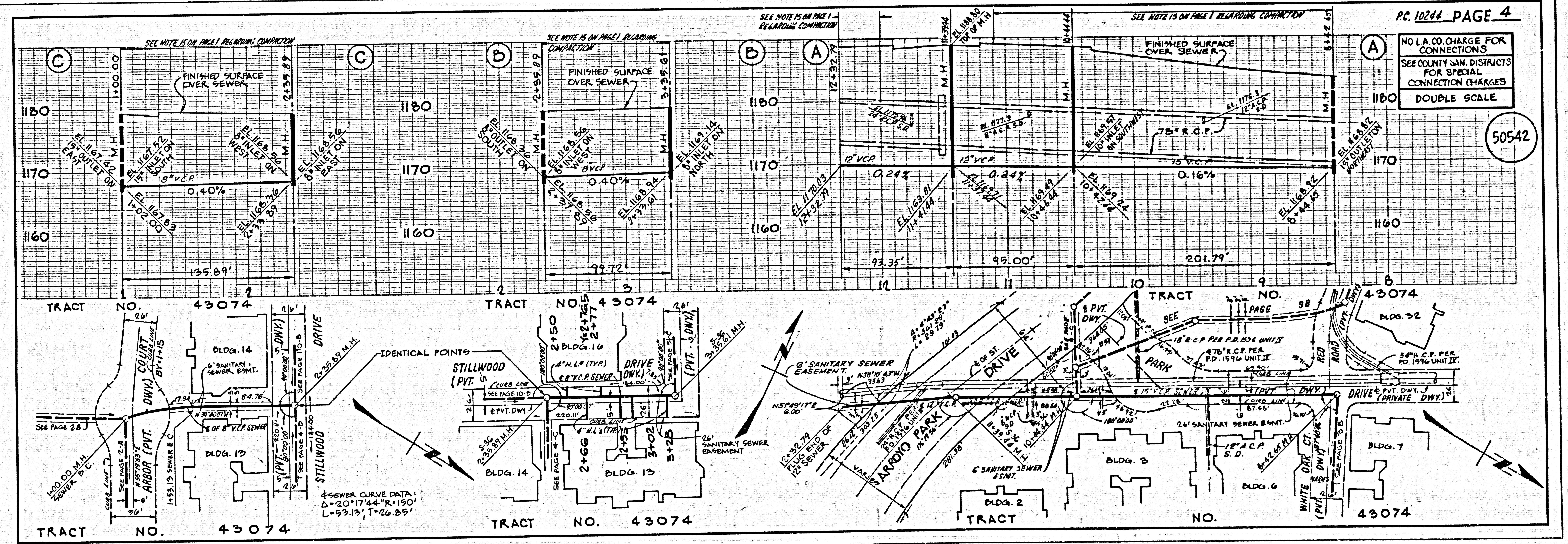
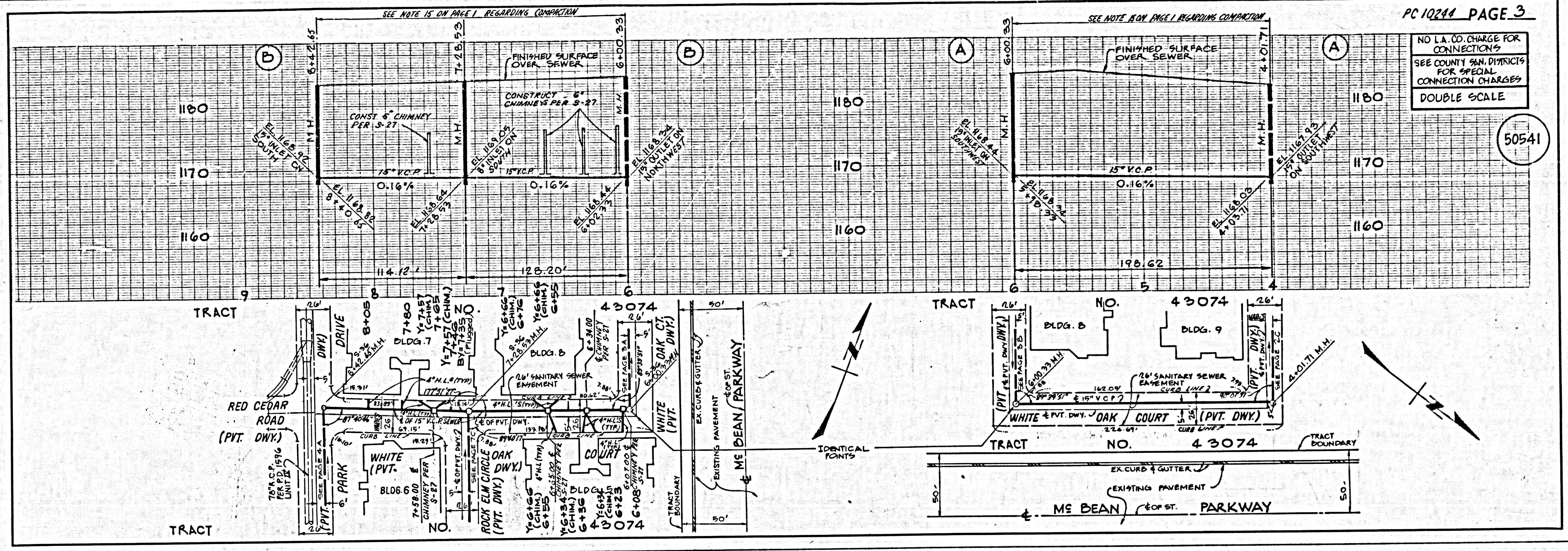
GENERAL NOTES:

- 1. ELEVATIONS ARE IN FEET ABOVE U.S.C. & G.S. SEA LEVEL DATUM OF 1929.
- 2. NO REVISIONS SHALL BE MADE IN THESE PLANS WITHOUT THE APPROVAL OF THE COUNTY ENGINEER.
- 3. NO REPRESENTATIVE OF THE COUNTY ENGINEER WILL VISIT OR LAY OUT ANY PORTION OF THE WORK.
- 4. GRADES TO WHICH THIS IMPROVEMENT IS TO BE CONSTRUCTED ARE SHOWN ON PLANS AND PROFILES. GRADE POINTS FOR TOP OF CURBS, CENTER LINE OF STREETS, OR CENTER LINE OF ALLEYS ARE SHOWN BY CIRCLES ON PROFILES. AT ALL POINTS BETWEEN DESIGNATED POINTS THE GRADE SHALL BE ESTABLISHED SO AS TO CONFORM TO A STRAIGHT LINE BETWEEN SAID DESIGNATED POINTS.
- 5. THE PRIVATE ENGINEER SHALL FURNISH THE COUNTY ENGINEER WITH GRADE SHEETS AND STATIONING FOR ALL HOUSE LATERALS AND "T" OR "Y" BRANCHES AND SHALL PROVIDE STAKES FOR THESE AT THREE PROPER LOCATIONS WITH STATIONING PLAINLY MARKED. ALL HOUSE LATERALS SHALL BE CONSTRUCTED IN A STRAIGHT ALIGNMENT AT RIGHT ANGLES FROM THE MAIN LINE SEWER EXCEPT AS SHOWN ON THE PLANS. HOUSE LATERALS FROM CHIMNEYS SHALL NOT HAVE AN ANGLE OF LESS THAN 45° WITH THE MAIN LINE SEWER. ANY CHANGE IN ALIGNMENT SHALL BE NO LESS THAN 10 FEET FROM THE PRIVATE ENGINEER'S DESIGN.
- 6. THE PRIVATE ENGINEER SHALL FURNISH THE HOUSE LATERAL BYTES AT THE PROPERTY LINE BELOW THE TOP OF CURB ELEVATION FOR EACH HOUSE LATERAL ON THE GRADE SHEET.
- 7. BEFORE WORK CAN BE STARTED, THE CONTRACTOR MUST OBTAIN A PERMIT TO EXCAVATE IN COUNTY STREETS FROM THE L.A. COUNTY ROAD DEPT., DISTRICT OFFICE NO. 5, AND PAY A FEE TO THE COUNTY ENGINEER, 330 S. VERMONT AVE. S.A. CA. 90020, ROOM 408 TO COVER THE COST OF CONSTRUCTION INSPECTION AND RECORD PLANS.
- 8. IF WORK IS TO BE DONE IN A STATE HIGHWAY, A PERMIT MUST BE OBTAINED FROM THE STATE OF CALIFORNIA, DIVISION OF HIGHWAYS, 120 SOUTH SPRING STREET, LOS ANGELES, CALIFORNIA.
- 9. APPROVAL OF THIS PLAN BY THE COUNTY OF LOS ANGELES DOES NOT CONSTITUTE A REPRESENTATION AS TO THE ACCURACY OF THE LOCATION OF OR THE EXISTENCE OR NON-EXISTENCE OF ANY UNDERGROUND UTILITY PIPE, OR STRUCTURE WITHIN THE LIMITS OF THE PROJECT. THIS NOTE APPLIES TO ALL PAGES.
- 10. REFER TO SECTION 7-18.1 OF THE STANDARD SPECIFICATIONS, REGARDING SAFETY OBSTACLES.
- 11. PRIOR TO THE ISSUANCE OF THE REQUIRED SEWER CONSTRUCTION PERMIT THE CONTRACTOR SHALL OBTAIN AND FILE WITH THE COUNTY ENGINEER COPIES OF A PERMIT TO EXCAVATE COUNTY STREETS FROM THE LOS ANGELES COUNTY ROAD DEPARTMENT, A PERMIT TO EXCAVATE AND TRENCHES FROM THE STATE OF CALIFORNIA DIVISION OF INDUSTRIAL SAFETY AND A CERTIFICATE OF WORKERS COMPENSATION INSURANCE WITH THE DEPARTMENT OF COUNTY ENGINEER, 330 SOUTH VERNON, LOS ANGELES, CALIFORNIA 90020, AND A CERTIFICATE HOLDER TO BE NOTIFIED 30 DAYS PRIOR TO CANCELLATION OF POLICY.

CONSTRUCTION NOTES:

- 1. WORK SHALL BE CONSTRUCTED ACCORDING TO THE STANDARD SPECIFICATIONS FOR PUBLIC WORKS CONSTRUCTION (REVISIONS WITH 1983 SUPPLEMENT) AND COUNTY ENGINEER SPECIAL PROVISIONS FOR THE CONSTRUCTION OF SANITARY SEWERS DATED 2/22/82, EL. 1212, AND SHALL BE CONSTRUCTED ONLY IN THE PRESENCE OF THE COUNTY ENGINEER.
- 2. THE CONTRACTOR SHALL NOTIFY THE PROJECT MANAGEMENT DIVISION, 738 - 8158, AT LEAST TWENTY-FOUR HOURS BEFORE STARTING ANY WORK UNDER THIS CONTRACT.
- 3. HOUSE LATERALS TO BE CONSTRUCTED WITH INVERTS AT HEIGHT LINE 4 FEET BELOW CURB GRADE EXCEPT AS NOTED.
- 4. WYE OR T BRANCHES MAY BE USED FOR CONNECTIONS TO MANHOLE SEWERS EXCEPT AS NOTED.
- 5. ALL STRUCTURES SHALL BE BUILT BACK MANHOLES PER 5-3, EXCEPT AS NOTED.
- 6. PROVIDE STAKES ON THE PROPERTY LINE OR PROPERTY LINES PRODUCED AT RIGHT ANGLES TO THE SEWER LINE AT THE CENTER LINE OF EACH MANHOLE.
- 7. MANHOLES SHALL BE UNCOVERED PORTS OF WAY TO BE LEVEL WITH FINISHED GRADE.
- 8. WETTER CLAY PIPE JOINTS SHALL BE TYPE "T", "C" OR "B" PER STANDARD SPECIFICATIONS SECTION 3B-3.
- 9. IF A POWER POLE IS WITHIN THREE FEET OF THE SEWER, THE SEWER SHALL BE ENCASED, PER 5-31, CASE 2, TWO FEET ON EACH SIDE FROM THE POINT OF INTERFERENCE.
- 10. IF DURING THE COURSE OF CONSTRUCTION IT IS DETERMINED THAT THERE IS LESS THAN FOUR FEET OF COVER OVER THE TOP OF A MAIN LINE OR HOUSE LATERAL V.C.P. SEWER WHICH IS NOT INDICATED ON THE PLANS, THE PIPE SHALL BE ENCASED PER 5-31, CASE 3, UNLESS OTHERWISE APPROVED BY THE COUNTY ENGINEER.
- 11. ALL JOINTS BETWEEN CLAY PIPE AND WETTER CLAY PIPE SHALL BE MADE WITH A RUBBER GASKET JOINT, TYPE "C" OR "T", WITH GASKETS IF NECESSARY PER STANDARD SPECIFICATIONS, SECTION 3B-3.
- 12. SEWERS TO BE TESTED FOR LEAKAGE PER SECTION 3B-4 OF THE STANDARD SPECIFICATIONS AND SPECIAL PROVISIONS.
- 13. REPAIR ALL TRENCHES WITHIN PAVED AREAS TO MEET L.A. COUNTY ROAD DEPT. OR CALIFORNIA STATE HIGHWAY REQUIREMENTS IN ACCORDANCE WITH PERMITS.
- 14. FULL COMPLIANCE WITH SECTION 20A-1.2 OF THE SPECIAL PROVISIONS WILL BE REQUIRED FOR BACKFILL IN STREETS. CERTIFICATION OF BACKFILL COMPACTION AND BANG EQUIVALENTS BY A QUALIFIED REGISTERED LABORATORY SHALL BE PROVIDED BY THE PRIVATE ENGINEER TO THE ISSUANCE OF A CERTIFICATE OF FINAL ACCEPTANCE.
- 15. SPECIAL BACKFILL IN EASEMENT CONSTRUCTION (A) BACKFILL TRENCH AND BENCHES OTHER THAN SOFT SPREADING SHALL BE APPROVED FOR THIS DEVELOPMENT BY THE BUILDING DEPARTMENT, 150 WEST 4TH STREET, LOS ANGELES, CALIFORNIA 90012, AND SHALL BE CONSTRUCTED AND BACKFILLED PER SECTION 20A-1.2 OF THE SPECIAL PROVISIONS. THIS CONSTRUCTION SHALL BE SUBMITTED TO THE PROJECT MANAGEMENT DIVISION.

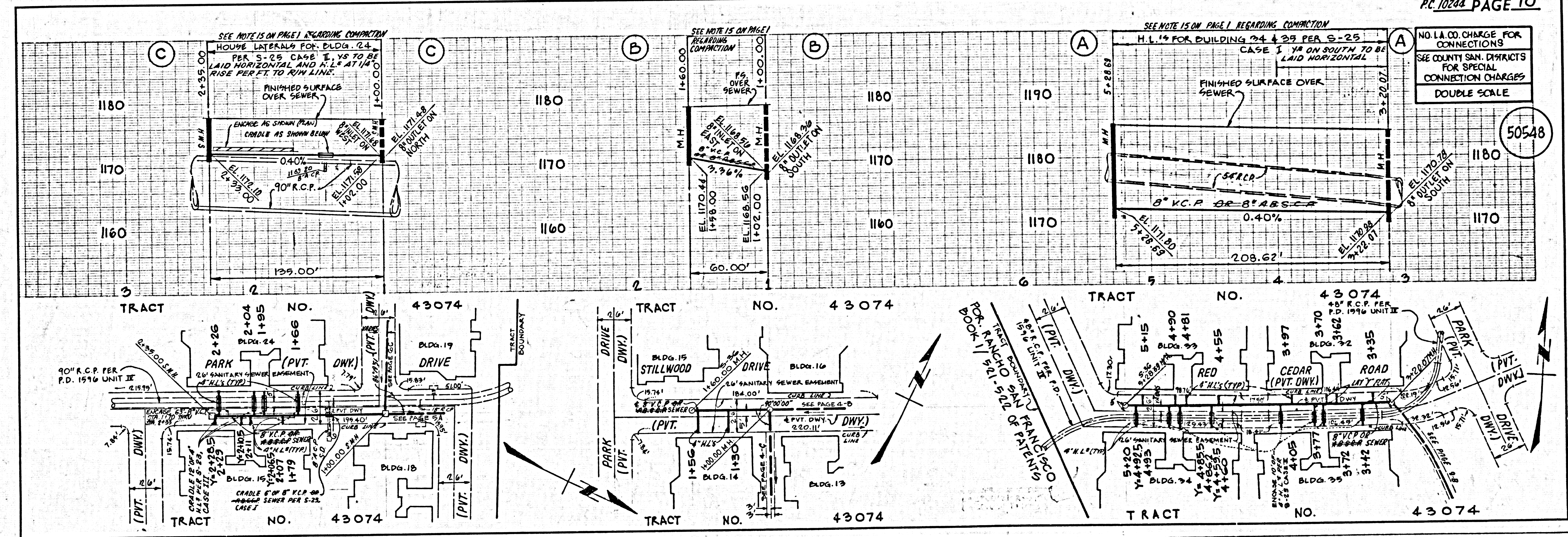
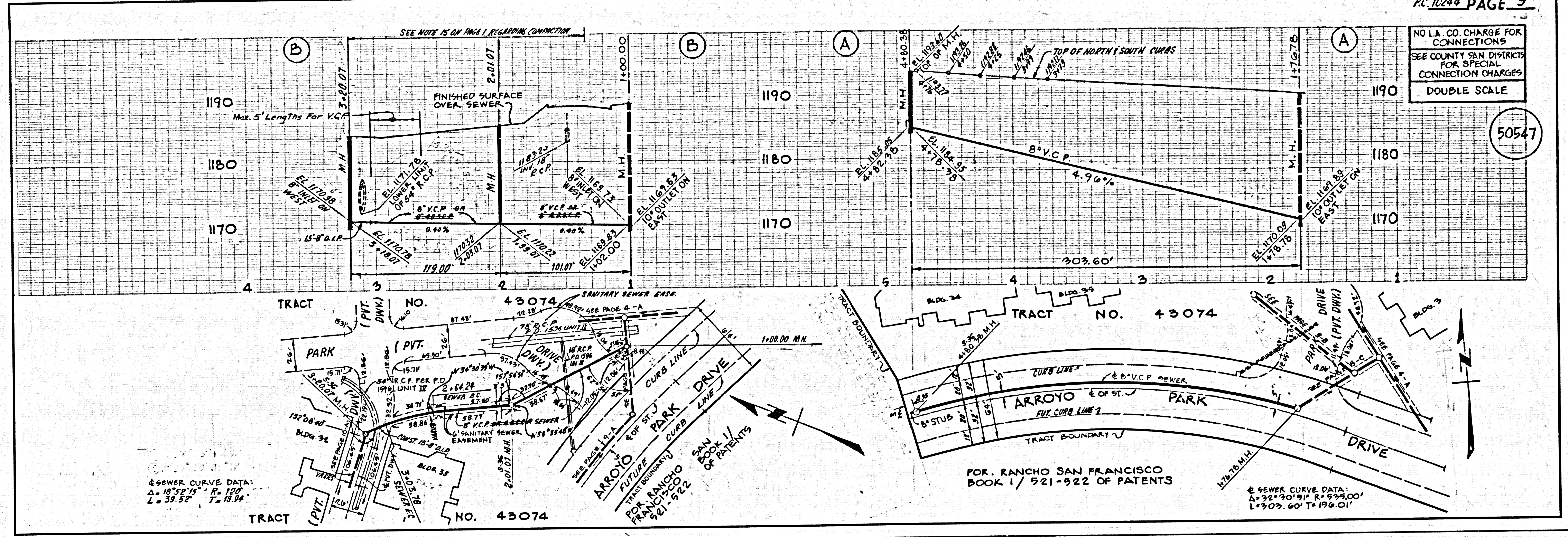


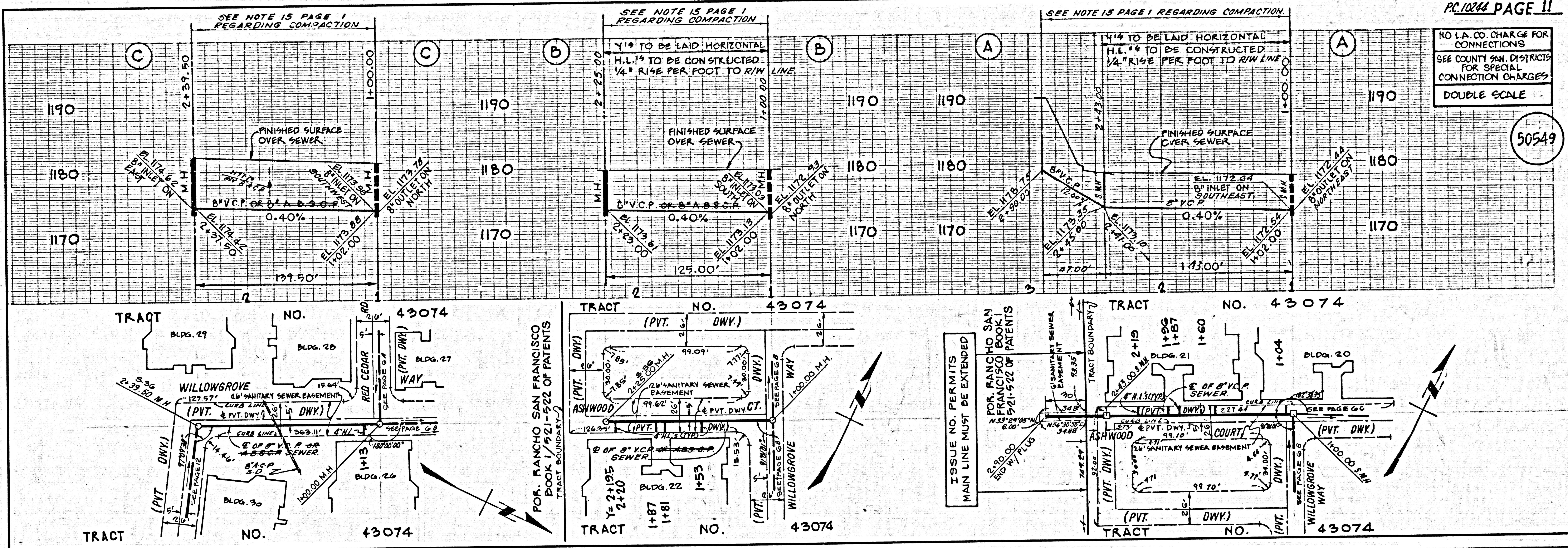


5

50541

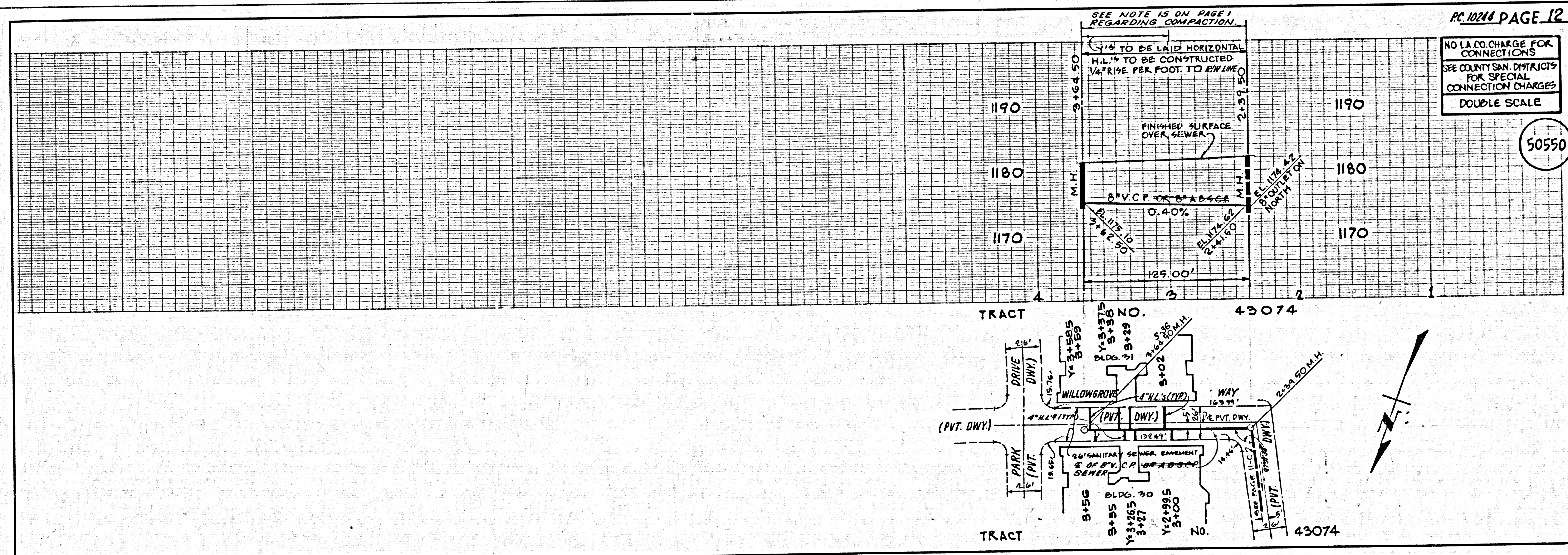
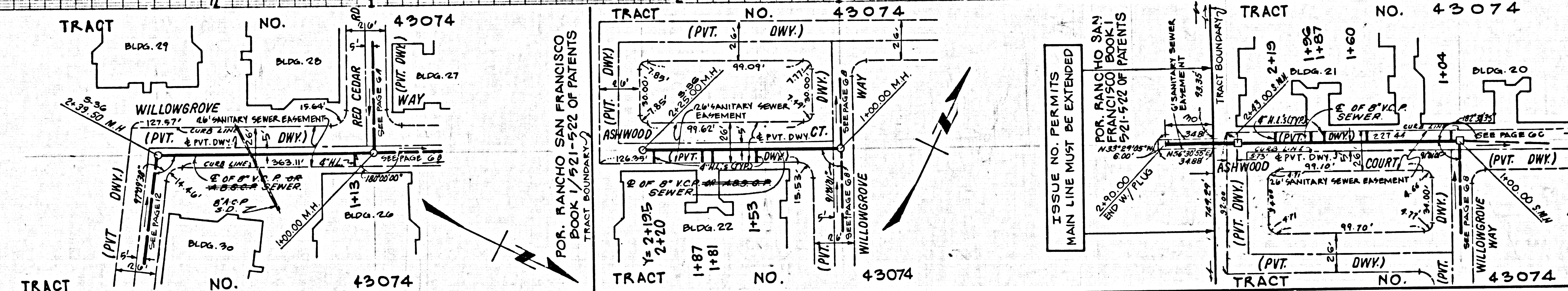
50542





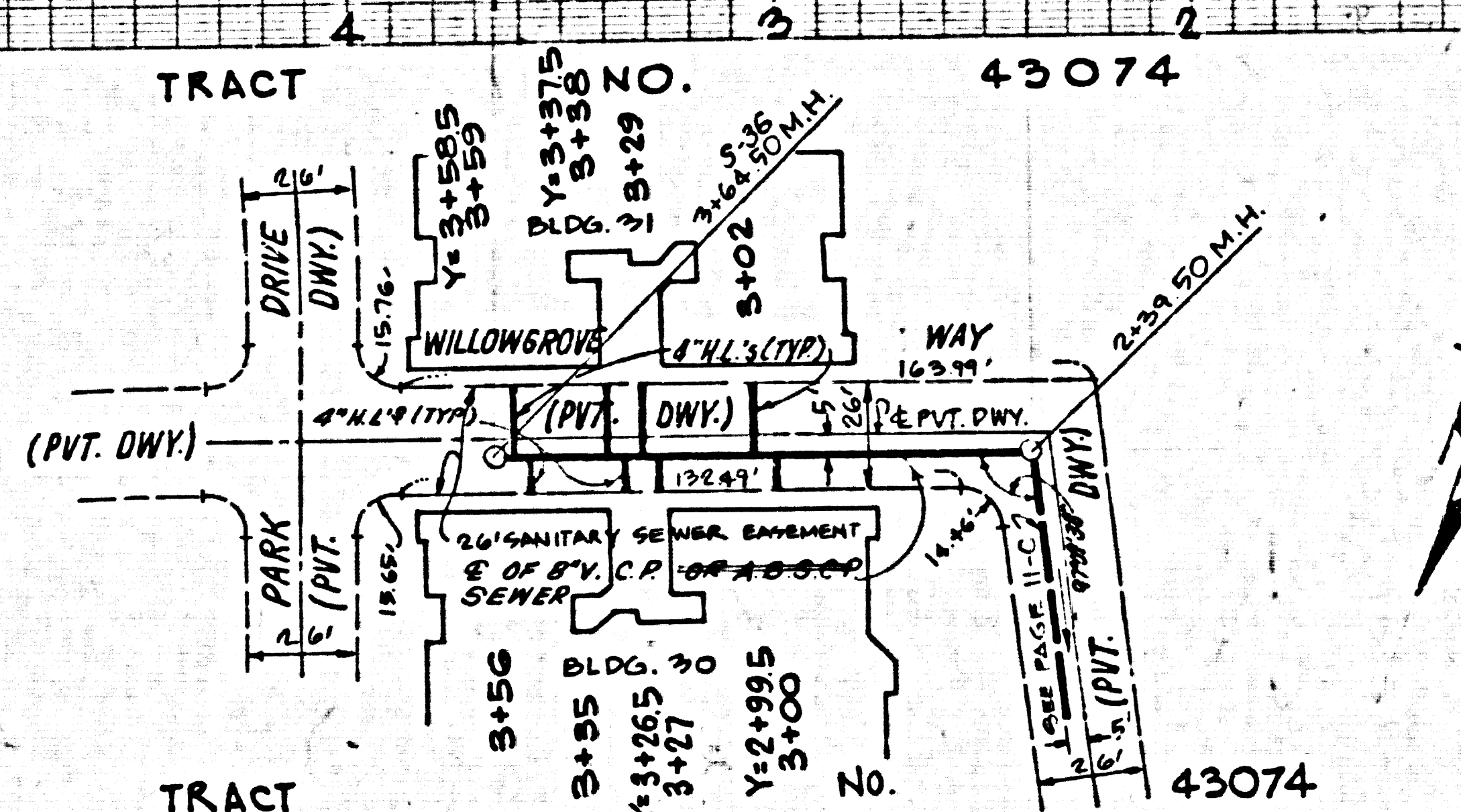
PC 10244 PAGE 11
 NO L.A. CO. CHARGE FOR CONNECTIONS
 SEE COUNTY SAN. DISTRICTS FOR SPECIAL CONNECTION CHARGES
 DOUBLE SCALE

50549



PC 10244 PAGE 12
 NO L.A. CO. CHARGE FOR CONNECTIONS
 SEE COUNTY SAN. DISTRICTS FOR SPECIAL CONNECTION CHARGES
 DOUBLE SCALE

50550



15' 10544
 15' 10544