

SANITARY SEWERS

TO BE CONSTRUCTED IN

TRACT NO. 33915

PRIVATE CONTRACT NO. 10248

C-232, F-2&3
W.S. 159-077
2 SHEETS, 4 PAGES

50779

SCALE: VERT. 1"=4'
HORIZ. 1"=40'

NOVEMBER, 1983
PREPARED IN THE OFFICES OF
LIND & HILLERICO INC.
2065 MONTGOMERY DRIVE
SAN MARINO, CA 91088

THE FOLLOWING LATEST REVISED STANDARD PLANS ON FILE IN THE OFFICE OF THE COUNTY ENGINEER SHALL APPLY TO THE CONSTRUCTION OF THIS PROJECT.

STANDARD PLAN NO. 1	5-1
STANDARD PLAN NO. 2	5-2
STANDARD PLAN NO. 3	5-3
STANDARD PLAN NO. 4	5-4
STANDARD PLAN NO. 5	5-5
STANDARD PLAN NO. 6	5-6
STANDARD PLAN NO. 7	5-7
STANDARD PLAN NO. 8	5-8
STANDARD PLAN NO. 9	5-9
STANDARD PLAN NO. 10	5-10
STANDARD PLAN NO. 11	5-11
STANDARD PLAN NO. 12	5-12
STANDARD PLAN NO. 13	5-13
STANDARD PLAN NO. 14	5-14
STANDARD PLAN NO. 15	5-15
STANDARD PLAN NO. 16	5-16
STANDARD PLAN NO. 17	5-17
STANDARD PLAN NO. 18	5-18
STANDARD PLAN NO. 19	5-19
STANDARD PLAN NO. 20	5-20
STANDARD PLAN NO. 21	5-21
STANDARD PLAN NO. 22	5-22
STANDARD PLAN NO. 23	5-23
STANDARD PLAN NO. 24	5-24
STANDARD PLAN NO. 25	5-25
STANDARD PLAN NO. 26	5-26
STANDARD PLAN NO. 27	5-27
STANDARD PLAN NO. 28	5-28
STANDARD PLAN NO. 29	5-29
STANDARD PLAN NO. 30	5-30
STANDARD PLAN NO. 31	5-31
STANDARD PLAN NO. 32	5-32
STANDARD PLAN NO. 33	5-33
STANDARD PLAN NO. 34	5-34
STANDARD PLAN NO. 35	5-35
STANDARD PLAN NO. 36	5-36
STANDARD PLAN NO. 37	5-37
STANDARD PLAN NO. 38	5-38
STANDARD PLAN NO. 39	5-39
STANDARD PLAN NO. 40	5-40
STANDARD PLAN NO. 41	5-41
STANDARD PLAN NO. 42	5-42
STANDARD PLAN NO. 43	5-43
STANDARD PLAN NO. 44	5-44
STANDARD PLAN NO. 45	5-45
STANDARD PLAN NO. 46	5-46
STANDARD PLAN NO. 47	5-47
STANDARD PLAN NO. 48	5-48
STANDARD PLAN NO. 49	5-49
STANDARD PLAN NO. 50	5-50
STANDARD PLAN NO. 51	5-51
STANDARD PLAN NO. 52	5-52
STANDARD PLAN NO. 53	5-53
STANDARD PLAN NO. 54	5-54
STANDARD PLAN NO. 55	5-55
STANDARD PLAN NO. 56	5-56
STANDARD PLAN NO. 57	5-57
STANDARD PLAN NO. 58	5-58
STANDARD PLAN NO. 59	5-59
STANDARD PLAN NO. 60	5-60
STANDARD PLAN NO. 61	5-61
STANDARD PLAN NO. 62	5-62
STANDARD PLAN NO. 63	5-63
STANDARD PLAN NO. 64	5-64
STANDARD PLAN NO. 65	5-65
STANDARD PLAN NO. 66	5-66
STANDARD PLAN NO. 67	5-67
STANDARD PLAN NO. 68	5-68
STANDARD PLAN NO. 69	5-69
STANDARD PLAN NO. 70	5-70
STANDARD PLAN NO. 71	5-71
STANDARD PLAN NO. 72	5-72
STANDARD PLAN NO. 73	5-73
STANDARD PLAN NO. 74	5-74
STANDARD PLAN NO. 75	5-75
STANDARD PLAN NO. 76	5-76
STANDARD PLAN NO. 77	5-77
STANDARD PLAN NO. 78	5-78
STANDARD PLAN NO. 79	5-79
STANDARD PLAN NO. 80	5-80
STANDARD PLAN NO. 81	5-81
STANDARD PLAN NO. 82	5-82
STANDARD PLAN NO. 83	5-83
STANDARD PLAN NO. 84	5-84
STANDARD PLAN NO. 85	5-85
STANDARD PLAN NO. 86	5-86
STANDARD PLAN NO. 87	5-87
STANDARD PLAN NO. 88	5-88
STANDARD PLAN NO. 89	5-89
STANDARD PLAN NO. 90	5-90
STANDARD PLAN NO. 91	5-91
STANDARD PLAN NO. 92	5-92
STANDARD PLAN NO. 93	5-93
STANDARD PLAN NO. 94	5-94
STANDARD PLAN NO. 95	5-95
STANDARD PLAN NO. 96	5-96
STANDARD PLAN NO. 97	5-97
STANDARD PLAN NO. 98	5-98
STANDARD PLAN NO. 99	5-99
STANDARD PLAN NO. 100	5-100

COUNTY OF LOS ANGELES, CALIFORNIA
STEPHEN J. KOONCE, COUNTY ENGINEER
LAS VIRGENES MUNICIPAL WATER DISTRICT
APPROVED: *[Signature]* DATE: 12/1/83
H.W. STOKES, CHIEF ENGINEER
CHECKED: *[Signature]* DATE: 11/11/83
REG. C.E. NO. 16141
CALABASAS BLDG. DIST. 9.1

PRIVATE ENGINEERS NOTICE TO CONTRACTORS

The existence and location of any underground utility pipes or structures shown on these plans are obtained by search of the available records. To the best of our knowledge there are no existing utilities except as shown on these plans. The contractor is required to take due precautionary measures to protect the utility lines shown and any other lines not of record or not shown on these plans.

Registered Engineer R.C.E. 19233

CONSTRUCTION NOTES CONT'D.

- FULL COMPLIANCE WITH PART IV OF THE SPECIAL PROVISIONS IS REQUIRED FOR THE INSTALLATION OF A.B.S. COMPOSITE PIPE.
- MANHOLE WATER STOP GASKETS AND CLAMPS ARE REQUIRED FOR THE CONNECTION OF A.B.S. COMPOSITE PIPE TO MANHOLE STRUCTURES.
- A.B.S. SOLID WALL PIPE MUST BE USED FOR VIE AND HOUSE LATERAL CONNECTIONS TO A.B.S. COMPOSITE MAINLINE SEWER PIPE.
- A.B.S. COMPOSITE PIPE SHALL BE INSTALLED IN CONFORMANCE WITH THE TABLE IN SECTION 8-1.1 OF PART IV OF THE SPECIAL PROVISIONS.
- THREE DEGREE DEFLECTION COUPLERS ARE REQUIRED FOR RADIUS OF CURVATURE LESS THAN 300 FEET WHEN USING 8" A.B.S. COMPOSITE PIPE.
- NO CONNECTIONS FOR DISPOSAL OF INDUSTRIAL WASTE IS ALLOWED IF A.B.S. COMPOSITE PIPE IS USED.
- SEWER LINE CURVATURE SHALL NOT BE ACHIEVED BY PULLING OF JOINTS OR BUCKLING PIPE ENDS WHEN USING PLASTIC PIPE INCLUDING A.B.S. COMPOSITE PIPE.
- TESTING PER LAB VIRGENES MUNICIPAL WATER DISTRICT:
 - INFILTRATION & LEAKAGE TESTS: METHOD USED FOR TESTING SHALL BE THE SAME AS L.A. COUNTY EXCEPT THE FORMULA TO BE USED IS AS FOLLOWS:
0.033 GALLONS/MINUTE/INCH OF DIAMETER/1,000 FEET
250 GALLONS/DAY/INCH OF DIAMETER/MILE
 - MANHOLE LEAKAGE TESTS: AT THE DISCRETION OF THE DISTRICT'S REPRESENTATIVE, ONE MANHOLE OUT OF EVERY TEN MANHOLES AND A MINIMUM OF TWO WILL BE FILLED WITH WATER & AFTER THREE HOURS WILL BE CHECKED FOR LEAKAGE WITH A DROPPING LEVEL. FOR EACH ONE MANHOLE NOT PASSING TESTS, FIVE MORE WILL BE TESTED AT THE DISCRETION OF THE DISTRICT'S REPRESENTATIVE.
 - AIR TESTING: INVERT OF THE UPPER STRUCTURE & THE INVERT OF THE LOWER STRUCTURE IS MORE THAN SIX (6) FEET. AN AIR TEST WILL BE MADE.
THE TIME TAKEN TO LOSE ONE (1) POUND PER SQUARE INCH GAUGE PRESSURE FROM THREE (3) POUNDS PER SQUARE INCH GAUGE PRESSURE TO TWO (2) POUNDS PER SQUARE INCH GAUGE PRESSURE SHALL NOT BE LESS THAN THOSE SHOWN IN THE FOLLOWING TABLE:

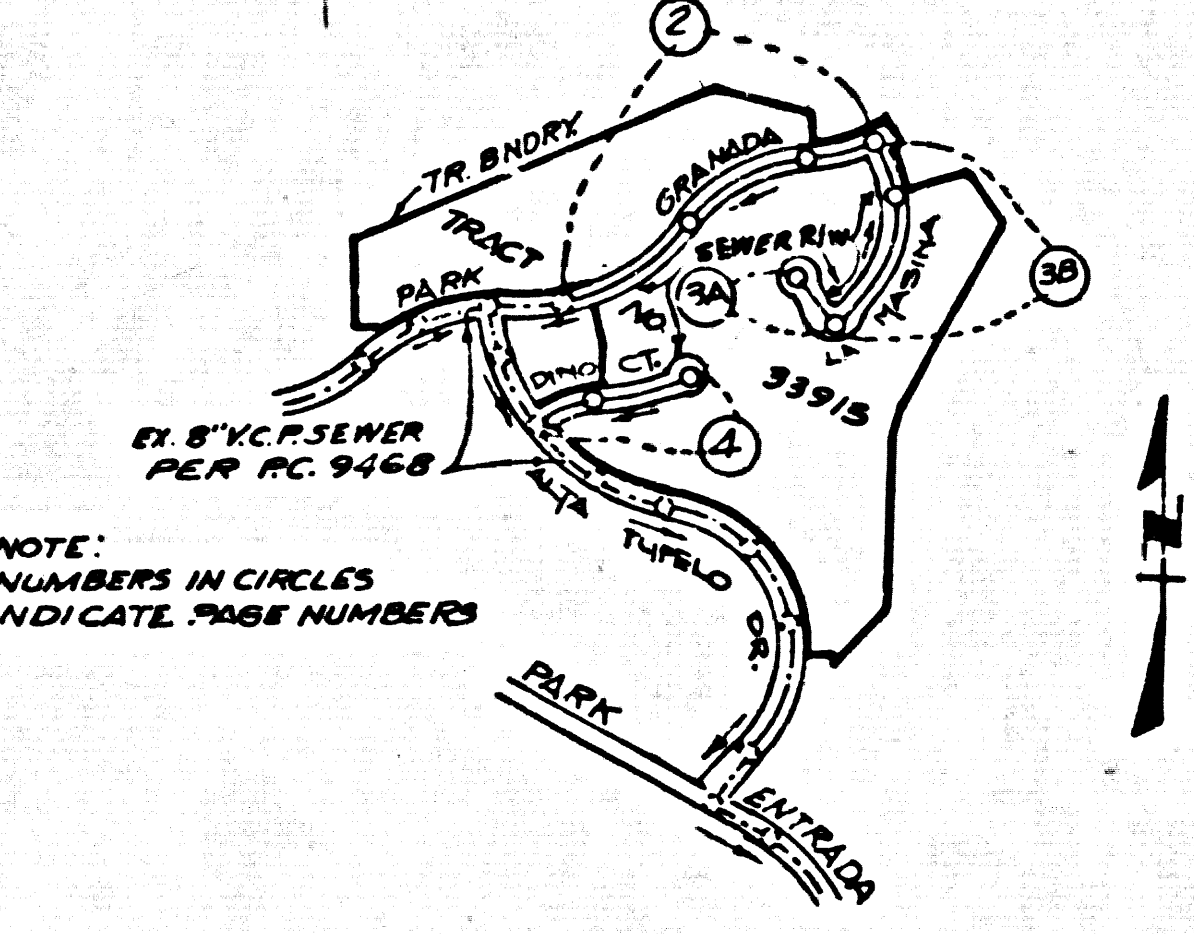
MAIN PIPE DIAMETER	MINIMUM TIME LOSS
8" - 14"	1 MINUTE
15" - 20"	2 MINUTES
21" - 30"	3 MINUTES
33" - 36"	4 MINUTES

IF THE TIME IS LESS THAN LISTED IN THE TABLE ABOVE, THE CONTRACTOR SHALL MAKE SUCH REPAIRS AS ARE NECESSARY TO ELIMINATE THE EXCESSIVE LEAKAGE.

NOTE: NO. 23 APPLIES ONLY TO SEWERS OWNED, OPERATED & MAINTAINED BY L.V.M.W.D.

B.M. BY 9039A ELEV. 1002.583
RDBM TAG IN CB GFT E BCR
44 FT N.E. 53 FT E. C/L INT
CALABASAS RD & PKWY CALABASAS
MALIBU QUAD. 19 72

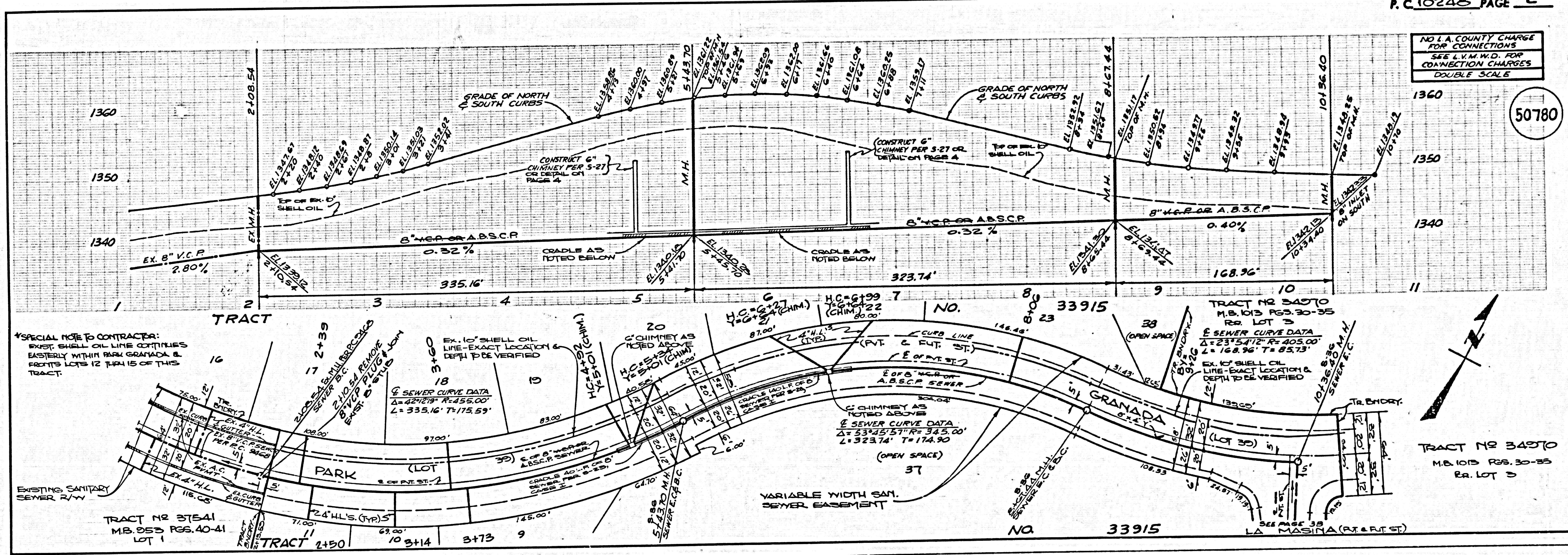
REVISION NO. 1
APPROVED BY: <i>[Signature]</i>
DATE: 11/11/83
L.A. COUNTY ENGINEER
DATE: 11/11/83
L.A. COUNTY ENGINEER



LOTS 37 & 38 ARE NON-BUILDABLE
LOTS 4 WILL NOT BE SERVED.

ISSUE PERMITS TO LOTS 1, 2, 3 & 4
FROM P.C. 2468 PAGE 5. CONSTRUCT
SADDLE PER 5-22 & H.L. FOR LOT
2 AT STA. 6+20 PER P.C. 2468.

ISSUE PERMITS TO LOTS 12, 13, 14, 15
& 16 FROM P.C. 2468 PAGES 7A & 7B.
CONSTRUCT SADDLE PER 5-22 &
H.L. FOR LOT 13 AT STA. 0+00 PAGE
7B PER P.C. 2468.



NO L.A. COUNTY CHARGE FOR CONNECTIONS
SEE E.L.M.W.D. FOR CONNECTION CHARGES
DOUBLE SCALE

50780

TRACT NO. 34570
M.B. 1013 PGS. 30-35
R.L. LOT 3

