

SANITARY SEWERS

50579

TO BE CONSTRUCTED IN CLARK AVENUE RECONSTRUCTION

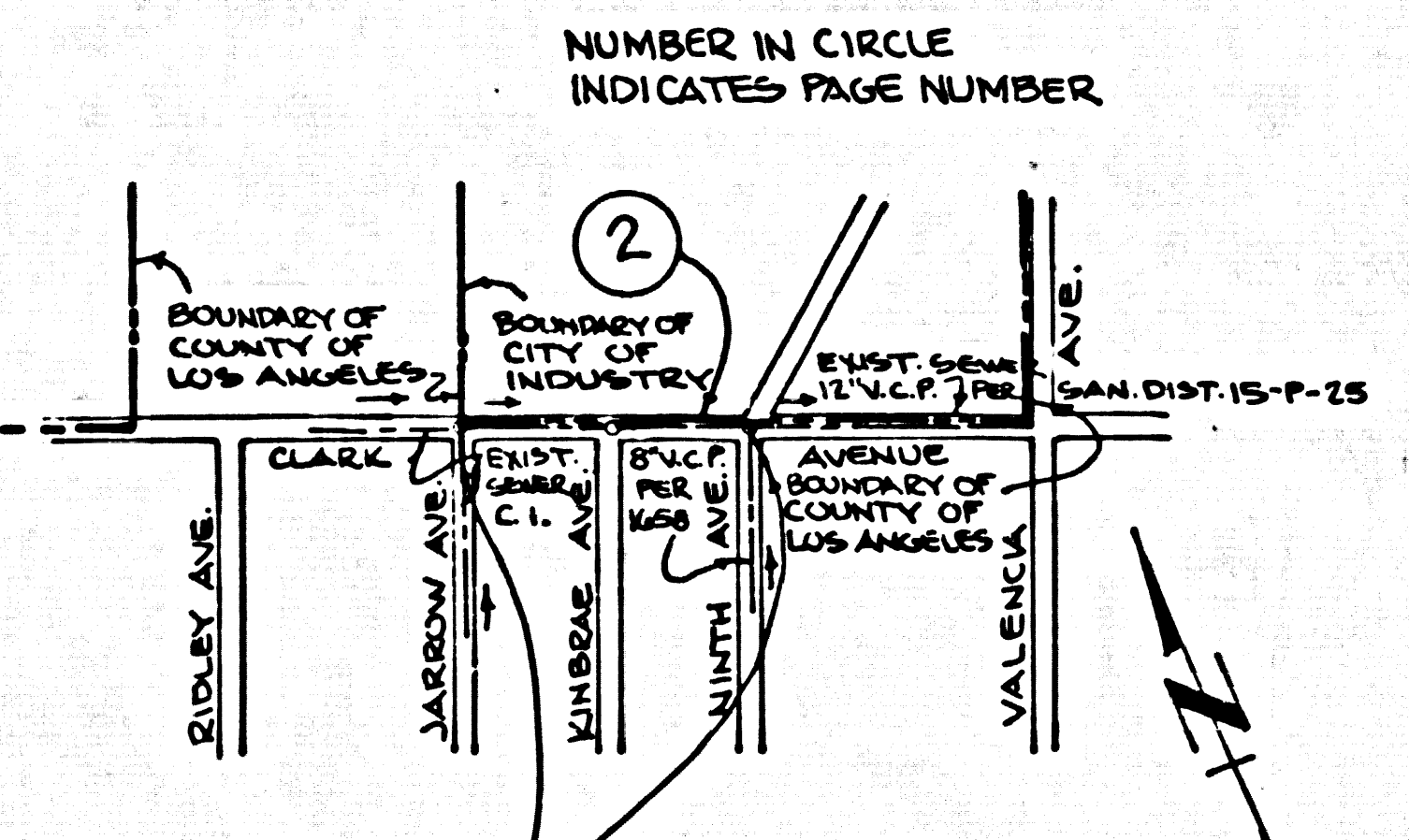
PRIVATE CONTRACT NO. 10250

W.S. 31-E3 1 SHEET 2 PAGES SCALE: HORIZ. 1"=40' VERT. 1"=4' MARCH 1984 PREPARED IN THE OFFICES OF C.W. COOK CO. 8459 MELROSE AVE. LOS ANGELES 90068 BY: G.F. Matlock REG. C.E. No. 15250

B.M. CG 4066 ELEV. 332.717 C&B.M. MON. FL. 1 FT. N/O NORTH CB. IN E. WALL C.B. 31 FT. N/O & OALE AVE. § 50 FT. W/O & 9th AVE. MKO (8M47-5-D-87) WHITTIER QUAD. 19.20

CONSTRUCTION NOTES (CON'T.) 16. CONTRACTOR SHALL MAINTAIN SEWER SERVICE AT ALL TIMES WHEN REPLACING MAINLINE SEWER AND RECONNECTING EXISTING HOUSE LATERALS. 17. CONTRACTOR WHEN REPLACING SEWER IN PLACE WITH LARGER SIZE PIPE, SHALL ALSO REPLACE ALL HOUSE LATERALS AND WYES WITH LARGER SIZE.

GENERAL NOTES: 1. ELEVATIONS ARE IN FEET ABOVE U.S.C. & G.S. SEA LEVEL DATUM OF 1929. 2. NO REVISIONS SHALL BE MADE IN THESE PLANS WITHOUT THE APPROVAL OF THE COUNTY ENGINEER. 3. NO REPRESENTATIVE OF THE COUNTY ENGINEER WILL SURVEY OR LAY OUT ANY PORTION OF THE WORK. 4. GRADES TO WHICH THIS IMPROVEMENT IS TO BE CONSTRUCTED ARE SHOWN ON PLANS AND PROFILES. GRADE POINTS FOR TOP OF CURB, CENTER LINE OF STREETS OR CENTER LINE OF ALLEYS ARE SHOWN BY CIRCLES ON PROFILES AT ALL POINTS BETWEEN DESIGNATED POINTS. THE GRADE SHALL BE ESTABLISHED SO AS TO CLAPFORM TO A STRAIGHT LINE DRAWN BETWEEN SAID DESIGNATED POINTS. 5. THE PRIVATE ENGINEER SHALL FURNISH THE COUNTY ENGINEER WITH GRADE SHEETS AND STATIONING FOR ALL HOUSE LATERALS AND 12" OR 18" BRANCHES AND SHALL PROVIDE STAKES FOR THEM AT THE PROPER LOCATIONS WITH STATIONING PLAINLY MARKED. ALL HOUSE LATERALS SHALL BE CONSTRUCTED IN A STRAIGHT ALIGNMENT AT RIGHT ANGLES FROM THE MAIN LINE SEWER EXCEPT AS SHOWN ON THE PLANS. HOUSE LATERALS FROM CHIMNEYS SHALL NOT HAVE AN ANGLE OF MORE THAN 45° WITH THE MAIN LINE SEWER. ANY CHANGE IN ALIGNMENT SHALL BE REQUESTED IN WRITING BY THE PRIVATE ENGINEER. 6. THE PRIVATE ENGINEER SHALL FURNISH THE HOUSE LATERAL DEPTH AT THE PROPERTY LINE BELOW THE TOP OF CURB ELEVATION FOR EACH HOUSE LATERAL ON THE GRADE SHEET. 7. BEFORE WORK CAN BE STARTED, THE CONTRACTOR MUST OBTAIN A PERMIT TO EXCAVATE IN COUNTY STREETS FROM THE L.A. COUNTY ROAD DEPT. DISTRICT OFFICE NO. 1 AND PAY A FEE TO THE COUNTY ENGINEER, 800 S. VERMONT AVENUE, LOS ANGELES, CA 90005 TO COVER THE COST OF CONSTRUCTION INSPECTION AND RECORD PLANS. 8. IF WORK IS TO BE DONE IN A STATE HIGHWAY, A PERMIT MUST BE OBTAINED FROM THE STATE OF CALIFORNIA, DIVISION OF HIGHWAYS, 120 SOUTH SPRING STREET, LOS ANGELES, CALIFORNIA. 9. APPROVAL OF THIS PLAN BY THE COUNTY OF LOS ANGELES DOES NOT CONSTITUTE A REPRESENTATION AS TO THE ACCURACY OF THE LOCATION OR THE EXISTENCE OR NON-EXISTENCE OF ANY UNDERGROUND UTILITY PIPE, OR STRUCTURE WITHIN THE LIMITS OF THIS PROJECT. THIS NOTE APPLIES TO ALL PAGES. 10. REFER TO SECTION 710.41 OF THE STANDARD SPECIFICATIONS, REGARDING SAFETY ORDERS. 11. PRIOR TO THE ISSUANCE OF THE REQUIRED SEWER CONSTRUCTION PERMIT, THE CONTRACTOR SHALL OBTAIN AND FILE WITH THE COUNTY ENGINEER COPIES OF A PERMIT TO EXCAVATE IN COUNTY STREETS FROM THE LOS ANGELES COUNTY ROAD DEPARTMENT, A PERMIT FOR EXCAVATIONS AND TRENCHES FROM THE STATE OF CALIFORNIA, DIVISION OF INDUSTRIAL SAFETY AND A CERTIFICATE OF WORKERS COMPENSATION INSURANCE FROM THE DEPARTMENT OF COUNTY ENGINEER, 800 SOUTH VERMONT, RM. 408, LOS ANGELES, CALIFORNIA 90005, NAMED AS THE CERTIFICATE HOLDER TO BE NOTIFIED BY THE COUNTY ENGINEER PRIOR TO CANCELLATION OF POLICY. 12. INDICATED DEPTH OF HOUSE LATERAL AT PROPERTY LINE.

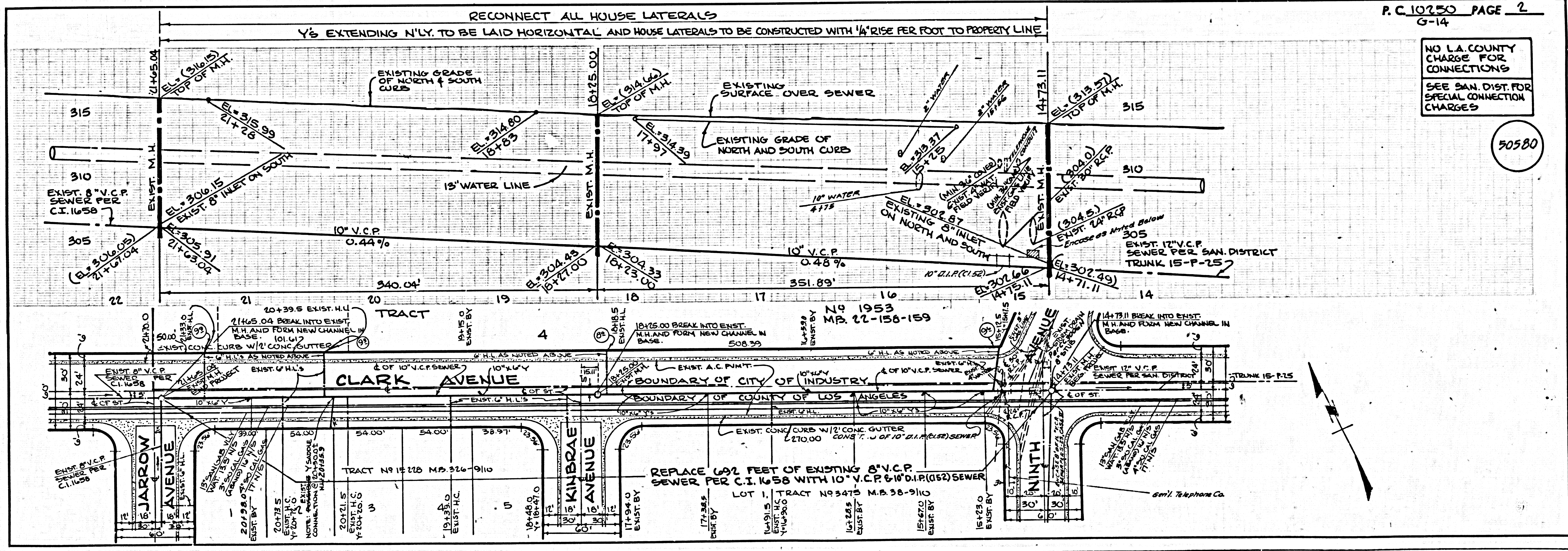


NUMBER IN CIRCLE INDICATES PAGE NUMBER. PROJECT LIMITS - REPLACE EXISTING 8" V.C.P. SEWER WITH 10" V.C.P. SEWER. INDEX MAP P.C. 10250 - CLARK AVENUE RECONSTRUCTION SCALE: 1" = 600'

NO CONNECTION FOR THE DISPOSAL OF INDUSTRIAL WASTES SHALL BE MADE TO SEWERS SHOWN ON THESE DRAWINGS UNTIL A PERMIT FOR INDUSTRIAL WASTEWATER DISCHARGE HAS BEEN ISSUED BY THE SANITATION DISTRICTS FOR SAID CONNECTION. BEFORE BREAKING INTO OR CONSTRUCTION ON A COUNTY SANITATION DISTRICT SEWER AND PRIOR TO FINAL ACCEPTANCE OF THE PROJECT, SANITATION DISTRICT INSPECTOR SHALL BE NOTIFIED BY PHONE 818 - 962-8605 SO THAT REQUIRED INSPECTION CAN BE MADE.

THE FOLLOWING LATEST REVISED STANDARD PLANS ON FILE IN THE OFFICE OF THE COUNTY ENGINEER SHALL APPLY IN THE CONSTRUCTION OF THE PROJECT. 5-1 5-2 5-3 5-4 5-5 5-6 5-7 5-8 5-9 5-10 5-11 5-12 5-13 5-14 5-15 5-16 5-17 5-18 5-19 5-20 5-21 5-22 5-23 5-24 5-25 5-26 5-27 5-28 5-29 5-30 5-31 5-32 5-33 5-34 5-35 5-36 5-37 5-38 5-39 5-40 5-41 5-42 5-43 5-44 5-45 5-46 5-47 5-48 5-49 5-50 5-51 5-52 5-53 5-54 5-55 5-56 5-57 5-58 5-59 5-60 5-61 5-62 5-63 5-64 5-65 5-66 5-67 5-68 5-69 5-70 5-71 5-72 5-73 5-74 5-75 5-76 5-77 5-78 5-79 5-80 5-81 5-82 5-83 5-84 5-85 5-86 5-87 5-88 5-89 5-90 5-91 5-92 5-93 5-94 5-95 5-96 5-97 5-98 5-99 5-100

COUNTY OF LOS ANGELES, CALIFORNIA STEPHEN J. KOONCE, COUNTY ENGINEER CHARLES W. CARRY, CHIEF ENGINEER CO. SAN DIST. NO. 15 APPROVED: [Signature] DAN DIMAS, REGIONAL ENGINEER, STATE CHECKED: [Signature] 5-31-84 DATE REG. C.E. No. 33134 LA PUENTE BLDG. DIST. 2.00



NO L.A. COUNTY CHARGE FOR CONNECTIONS SEE SAN. DIST. FOR SPECIAL CONNECTION CHARGES

50580