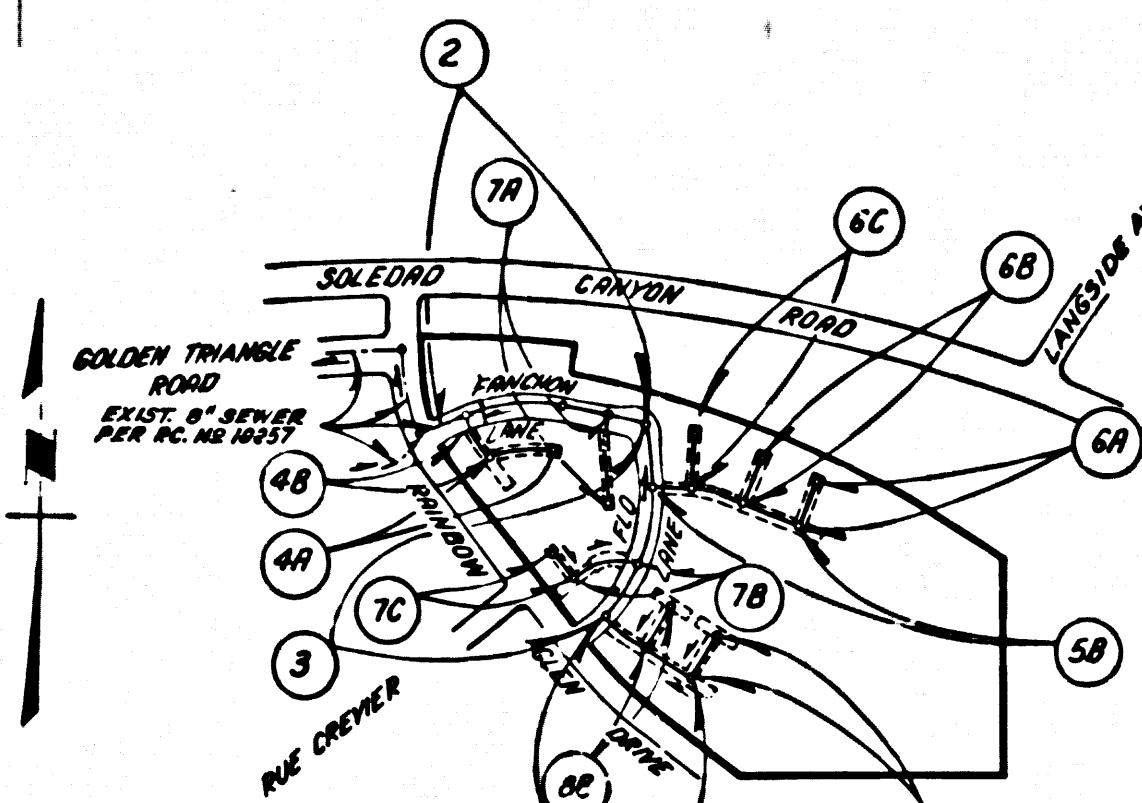


B.M. CL 4587 ELV 1327.698
 ROOM TAG IN CONC. BASE TRAFFIC
 LIGHT ON NW COR. SOLENOID ON RD. &
 LONGSIDE. AVE 48' x 43' W. CL. 17'
 13' E/LY BCR
 NEWHALL QUAD. 19 78



Note:
 1. Sanitary Sewers on Pages
 40, 48, 50, 56, 60, 68, 69, 70,
 75, 76, 80, 81, 82, 84, 85, 86, 87, 88, 89, 90, 91, 92, 93, 94, 95, 96, 97, 98, 99, 100.
 2. Numbers in circles indicate
 page numbers.

INDEX MAP
TRACT NO. 36686
 P.C. NO. 10256
 Scale: 1" = 500'

DOUBLE SCALE

CONSTRUCTION NOTES: (CONT)

16. WYE BRANCHES ONLY MAY BE USED FOR CONNECTIONS TO MAIN LINE SEWER IF A.B.S.C.P. IS USED.
17. ALL JOINTS BETWEEN CAST IRON PIPE AND A.B.S.C.P. SHALL BE MADE WITH APPROVED FITTINGS.
18. FULL COMPLIANCE WITH PART IV. OF THE SPECIAL PROVISIONS IS REQUIRED FOR THE INSTALLATION OF A.B.S. COMPOSITE PIPE AND A.B.S. SOLID WALL HOUSE LATERALS.
19. MANHOLE BUTTER STOP BRACKETS AND CLAMPS ARE REQUIRED FOR THE CONNECTION OF A.B.S. COMPOSITE PIPE TO MANHOLE STRUCTURES.
20. A.B.S. SOLID WALL PIPE MUST BE USED FOR WYE AND HOUSE LATERAL CONNECTIONS TO A.B.S. COMPOSITE MAINLINE SEWER PIPE.
21. 8 DEGREE DEFLECTION COUPLERS SHALL BE USED TO ACCOMPLISH RADII OF CURVATURE LESS THAN 300'.
22. A.B.S. COMPOSITE PIPE SHALL BE BEDDED IN CONFORMANCE WITH THE TABLE IN SECTION B-51 OF PART IV OF SPECIAL PROVISIONS.

GENERAL NOTES: (CONT)

13. ALL REFERENCES ON THIS PLAN TO THE COUNTY ENGINEER, THE ROAD DEPARTMENT, OR THE PUBLIC WORKS DISTRICT SHALL APPLY TO THESE APPROPRIATE SECTIONS OF THE DEPARTMENT OF PUBLIC WORKS.
- NO CONNECTION FOR THE DISPOSAL OF INDUSTRIAL WASTES SHALL BE MADE TO SEWERS SHOWN ON THESE DRAWINGS UNTIL A PERMIT FOR INDUSTRIAL WASTEWATER DISCHARGE HAS BEEN ISSUED BY THE SANITATION DISTRICTS FOR SAID CONNECTION.
- BEFORE BREAKING INTO OR CONSTRUCTION ON A COUNTY SANITATION DISTRICT SEWER AND PRIOR TO FINAL ACCEPTANCE OF THE PROJECT, SANITATION DISTRICT INSPECTOR SHALL BE NOTIFIED BY PHONE 818 - 962-8605 SO THAT REQUIRED INSPECTION CAN BE MADE.

ALLOW NO CONNECTIONS UNTIL OUTLET SEWER P.C. 10257 IS ACCEPTED FOR PUBLIC USE BY THE COUNTY OF LOS ANGELES.

GENERAL NOTES:

1. ELEVATIONS ARE IN FEET ABOVE U.S.C. & G.S. SEA LEVEL DATUM OF 1929.
2. NO REVISIONS SHALL BE MADE IN THESE PLANS WITHOUT THE APPROVAL OF THE COUNTY ENGINEER.
3. NO REPRESENTATIVE OF THE COUNTY ENGINEER WILL SURVEY OR LAY OUT ANY PORTION OF THE WORK.
4. GRADING TO WHICH THE MANHOLE DEPTH IS TO BE CONSTRUCTED ARE SHOWN ON PLANS AND PATTERNS. GRADE POINTS FOR TOP OF CURBS, CENTER LINE OF STREETS, OR CENTER LINE OF ALLEYS ARE SHOWN BY DIMENSION LINES AT ALL POINTS BETWEEN DESIGNATED POINTS THE GRADE SHALL BE ESTABLISHED AS TO CONFORM TO A STRAIGHT LINE DRAWN BETWEEN SAID DESIGNATED POINTS.
5. THE PRIVATE ENGINEER SHALL FURNISH THE COUNTY ENGINEER WITH 12 SHEETS AND STATIONING FOR ALL HOUSE LATERALS AND 10" OR 12" BRANCHES AND SHALL PROVIDE STAKES FOR THEM AT THEIR PROPER LOCATIONS WITH STATIONING PLANS MARKED ALL HOUSE LATERALS SHALL BE CONSTRUCTED ON A STRAIGHT ALIGNMENT AT RIGHT ANGLES FROM THE MAIN LINE SEWER TO BE SET AS SHOWN ON THE PLANS. HOUSE LATERALS FROM ON LANE SHALL NOT HAVE AN ANGLE OF LESS THAN 45 DEGREES WITH THE MAIN LINE SEWER. AN "CHANGE IN ALIGNMENT" SHALL BE REQUESTED IN WRITING BY THE PRIVATE ENGINEER.
6. THE PRIVATE ENGINEER SHALL FURNISH THE HOUSE LATERAL DEPTH AT THE PROPERTY LINE BELOW THE TOP OF CURB ELEVATION FOR EACH HOUSE LATERAL ON THE GRADE SHEET.
7. BEFORE WORK CAN BE STARTED THE CONTRACTOR MUST OBTAIN A PERMIT TO EXCAVATE IN COUNTY STREETS FROM THE L.A. COUNTY ROAD DEPT. (DISTRICT OFFICE NO. 8) AND PAY A FEE TO THE COUNTY ENGINEER \$500. VERMONT AVENUE, LOS ANGELES, CALIF. TO COVER THE COST OF CONSTRUCTION INSPECTION AND RECORD PLANS.
8. IF WORK IS TO BE DONE ON A STATE HIGHWAY A PERMIT MUST BE OBTAINED FROM THE STATE OF CALIFORNIA, DIVISION OF HIGHWAYS, 150 SOUTH SPRING STREET, LOS ANGELES, CALIFORNIA.
9. APPROVAL OF THIS PLAN BY THE COUNTY OF LOS ANGELES DOES NOT CONSTITUTE A REPRESENTATION AS TO THE ACCURACY OF THE LOCATION OR OF THE EXISTENCE OR NON-EXISTENCE OF ANY UNDERGROUND UTILITY PIPE OR STRUCTURE WITHIN THE LIMITS OF THE PROJECT. THIS NOTE APPLIES TO ALL PAGES.
10. REFER TO SECTION 11541 OF THE STANDARD SPECIFICATIONS, REGARDING SAFETY ORDERS.
11. PRIOR TO THE ISSUANCE OF THE REQUIRED SEWER CONSTRUCTION PERMIT THE CONTRACTOR SHALL OBTAIN AND FILE WITH THE COUNTY ENGINEER COPIES OF A PERMIT TO EXCAVATE IN COUNTY STREETS FROM THE LOS ANGELES COUNTY ROAD DEPARTMENT, A PERMIT FOR EXCAVATIONS AND TRENCHES FROM THE STATE OF CALIFORNIA, DIVISION OF INDUSTRIAL SAFETY AND CURVICIDE OF WORKERS' COMPENSATION INSURANCE WITH THE DEPARTMENT OF COUNTY ENGINEER, 300 SOUTH VERMONT AVENUE, LOS ANGELES, CALIFORNIA. WORK NAMED AS THE CERTIFICATE HOLDER TO BE WITHIN 10 DAYS PRIOR TO CANCELLATION OF POLICY.

CONSTRUCTION NOTES:

1. WORK SHALL BE CONSTRUCTED ACCORDING TO THE STANDARD SPECIFICATIONS FOR PUBLIC WORKS CONSTRUCTION (11-88 EDITION WITH 1988 SUPPLEMENTS) & COUNTY ENGINEER SPECIAL PROVISIONS FOR THE CONSTRUCTION OF SANITARY SEWERS (DATED 3/21/85, 1/27/86) AND SHALL BE PROSECUTED ONLY IN THE PRESENCE OF THE COUNTY ENGINEER.
2. THE CONTRACTOR SHALL NOTIFY THE ENVIRONMENTAL SERVICES BY TELEPHONE 778-2116 AT LEAST TWENTY-FOUR HOURS BEFORE STARTING ANY WORK UNDER THIS CONTRACT.
3. HOUSE LATERALS TO BE CONSTRUCTED WITH 1/2" ANGLE PER FOOT TO 4" MIN. EXCEPT AS NOTED.
4. WYE OR TEE BRANCHES MAY BE USED FOR CONNECTIONS TO MAINLINE SEWER EXCEPT AS NOTED.
5. ALL STRUCTURES SHALL BE EITHER BRICK MANHOLES PER 5-3 OR PRECAST CONCRETE MANHOLES PER 5-36 EXCEPT AS NOTED.
6. PROVIDE STAKES ON THE PROPERTY LINE OR PROPERTY LINES PRODUCED AT RIGHT ANGLES TO THE SEWER LINE AT THE CENTER LINE OF EACH MANHOLE.
7. MANHOLE TOPS IN UNIMPROVED RIGHTS OF WAY TO BE SIX INCHES ABOVE FINISHED GRADE.
8. VITRIFIED CLAY PIPE JOINTS SHALL BE TYPE "D" OR "D" PER STANDARD SPECIFICATIONS SECTION 306-2.
9. IF A ROWER POLE IS WITHIN THREE FEET OF THE SEWER, THE SEWER SHALL BE ENCASED PER 5-23, CASE II UNLESS OTHERWISE APPROVED BY THE COUNTY ENGINEER.
10. IF DURING THE COURSE OF CONSTRUCTION IT IS DETERMINED THAT THERE IS LESS THAN FOUR FEET OF COVER OVER THE TOP OF A MAIN LINE OR HOUSE LATERAL SEWER WHICH IS NOT INDICATED ON THE PLANS, THE PIPE SHALL BE ENCASED PER 5-23, CASE II UNLESS OTHERWISE APPROVED BY THE COUNTY ENGINEER.
11. ALL JOINTS BETWEEN CAST IRON PIPE AND VITRIFIED CLAY PIPE SHALL BE MADE WITH A RUBBER SLEEVE JOINT, TYPE "D" OR "D" (WITH BUSHING IF NECESSARY) PER STANDARD SPECIFICATIONS, SECTION 306-2.
12. SEWERS TO BE TESTED FOR LEAKAGE PER SECTION 306-1 OF THE STANDARD SPECIFICATIONS AND SPECIAL PROVISIONS.
13. REPAIRS TO ALL FRANCHES WITHIN PAVED AREAS TO MEET L.A. COUNTY ROAD DEPT. OR CALIFORNIA STATE HIGHWAY REQUIREMENTS IN ACCORDANCE WITH PERMITS.
14. FULL COMPLIANCE WITH SECTION 306-1.3.5 OF THE SPECIAL PROVISIONS WILL BE REQUIRED FOR BACKFILL IN STREETS. CERTIFICATION OF BACKFILL OBTAINATION AND STANDARDS EQUIVALENTS BY A QUALIFIED, REGISTERED TESTING LABORATORY SHALL BE PROVIDED BY THE PERMITTEE PRIOR TO THE ISSUANCE OF A CERTIFICATE OF PARTIAL ACCEPTANCE.
15. SPECIAL BACKFILL IN EASEMENT CONSTRUCTION (A) BACKFILL TRENCH AND REPLACE OTHER EARTH SO AS TO ACHIEVE THE ORIGINAL FINISHED GRADES AND SLOPES SHOWN ON THE GRADING PLAN APPROVED FOR THE DEVELOPMENT BY THE BUILDING AND SAFETY DIVISION. (B) ALL BACKFILL AND EARTH REPLACEMENT SHALL BE COMPACTED TO A MINIMUM OF 90% OF MAXIMUM DENSITY PER A.S.T.M. METHOD "D" UNLESS OTHERWISE SPECIFIED. ACCEPTABLE CERTIFICATION OF SUCH COMPACTION SHALL BE SUBMITTED TO THE ENVIRONMENTAL SERVICES.

PROFILE, ALIGNMENT AND GRADE OF
SANITARY SEWERS
 TO BE CONSTRUCTED IN

TRACT NO. 36686
PRIVATE CONTRACT NO. 10256
A-61

4 SHEETS, 8 PAGES
 SCALE: VERT. 1" = 4'
 HORIZ. 1" = 40'
 APRIL, 1914
 PREPARED IN THE OFFICES OF
ENGINEERING SERVICE CORPORATION
 807 HUNTINGTON PARKWAY, LOS ANGELES 17, CALIF.
 CULVER CITY OFFICE: 11111 S. VAN NESS ST., CULVER CITY, CALIF. 90230
 BY: *J.R. Anderson*
 REG. C.E. NO. 13095

THE FOLLOWING LATEST REVISED STANDARD PLANS ON FILE IN THE OFFICE OF THE COUNTY ENGINEER SHALL APPLY IN THE CONSTRUCTION OF THIS PROJECT:

LEGEND	5-1
MINIMUM PUBLIC SAFETY REQUIREMENTS	5-2
BRICK MANHOLE	5-3
STANDARD MANHOLE STOP	5-17
BRICK FOR SEWER PIPE	5-18
CRADING AND ENCASEMENT	5-23
WYE OR TEE SUPPORT	5-26
ALLOWABLE TRENCH WIDTHS	5-29
LOCKING MANHOLE FRAME AND COVER	5-31
NON-REINFORCED PRECAST CONCRETE MANHOLE	5-34

COUNTY OF LOS ANGELES, CALIFORNIA
THOMAS A. TIDEMANSON, DIRECTOR OF PUBLIC WORKS **CHARLES W. CARRAN, CHIEF ENGINEER**
 CO. SANITARY DIST. 28

APPROVED: *Philip Davis* 3/1/85 DATE: *5/23/85*
 APPROVED: *John W. Fuller* 5/23/85
 CHIEF ENGINEER

CHECKED: *Sanji G. Balci* 3-7-85
 REG. C.E. NO. 33134

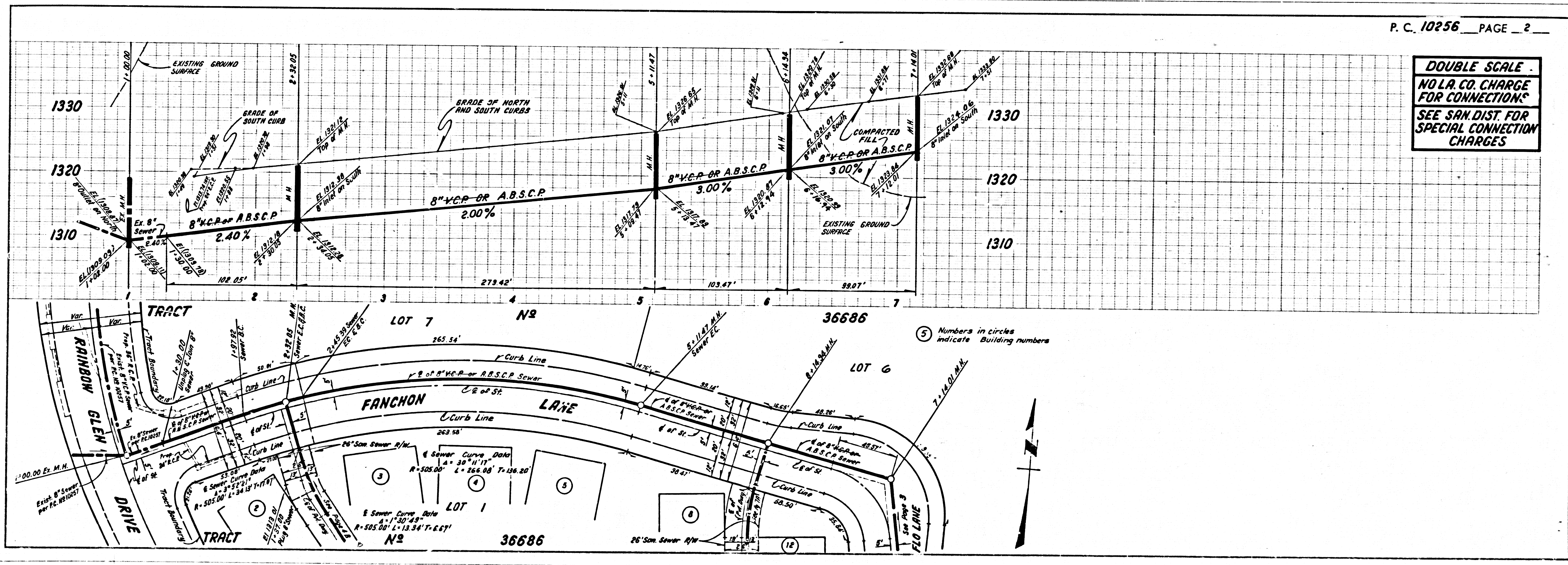
SANTA CLARITA VALLEY BLDG. DIST. 82

REVISION NO. 1 DATE: 3/7/86
 Revised Buildings, Building Numbers, Lot Lines, Lot Numbers, M.R. Locations, Private Driveways & Elevations. All Pages.
 APPROVED: *Sanji G. Balci* 3/7/86
 OFFICE OF DEPT. OF PUBLIC WORKS

REVISION NO. 2 DATE: 4/15/86
 REVISED BY SEWER TO BEGIN FROM STA. 1+30.00 ON PAGE 2
 APPROVED: *Sanji G. Balci* 4/15/86
 OFFICE OF DEPT. OF PUBLIC WORKS

REVISION NO. 3 DATE: 3/1/88
 UNIFORM CITY STAIR AND EXTEND 8" SEWER TO STA. 6+11.76 AND CONSTRUCT MANHOLE ON PAGE 4B.
 APPROVED: *Sanji G. Balci* 3/1/88
 OFFICE OF DEPT. OF PUBLIC WORKS

NOTE: ISSUE HOUSE CONNECTION PERMIT FOR LOTS 6 FROM P.C. 10257, PAGE 2A.



P.C. 10256 PAGE 2

DOUBLE SCALE
NO L.A. CO. CHARGE FOR CONNECTIONS
SEE SAN. DIST. FOR SPECIAL CONNECTION CHARGES

1

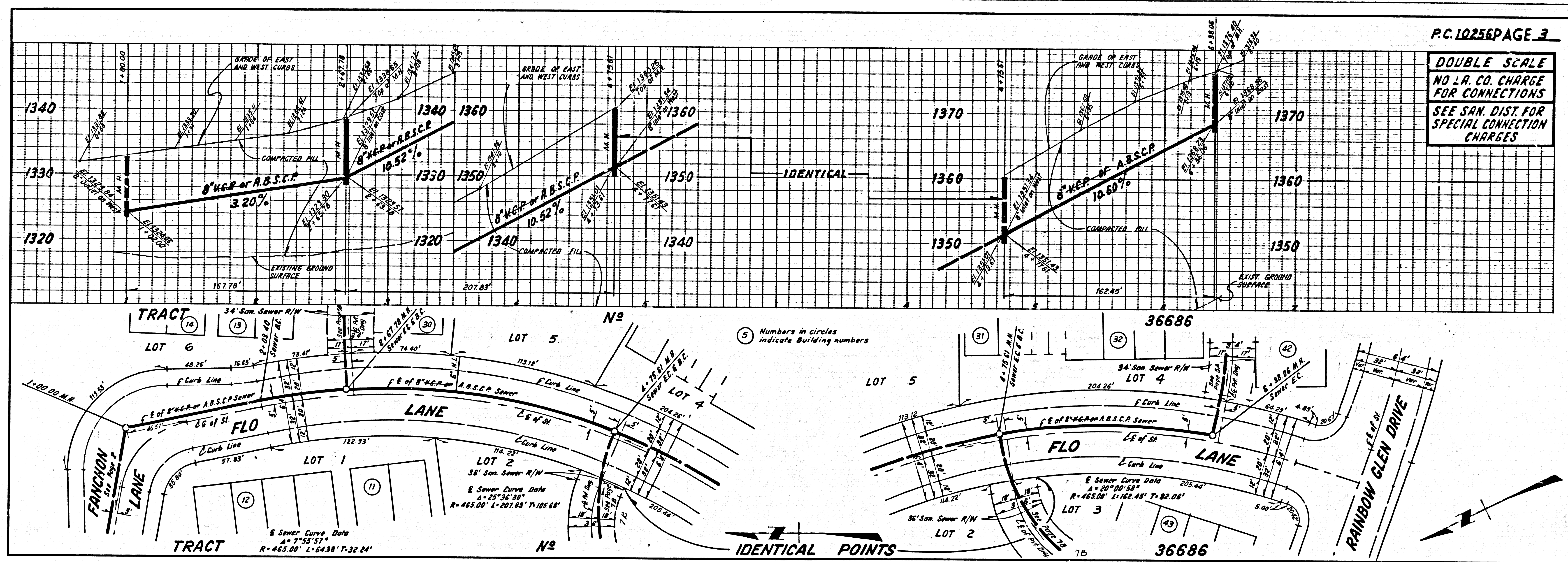
TRACT NO. 36686 P.C. NO. 10256

5

22501 24.29 28226 24.17 2927

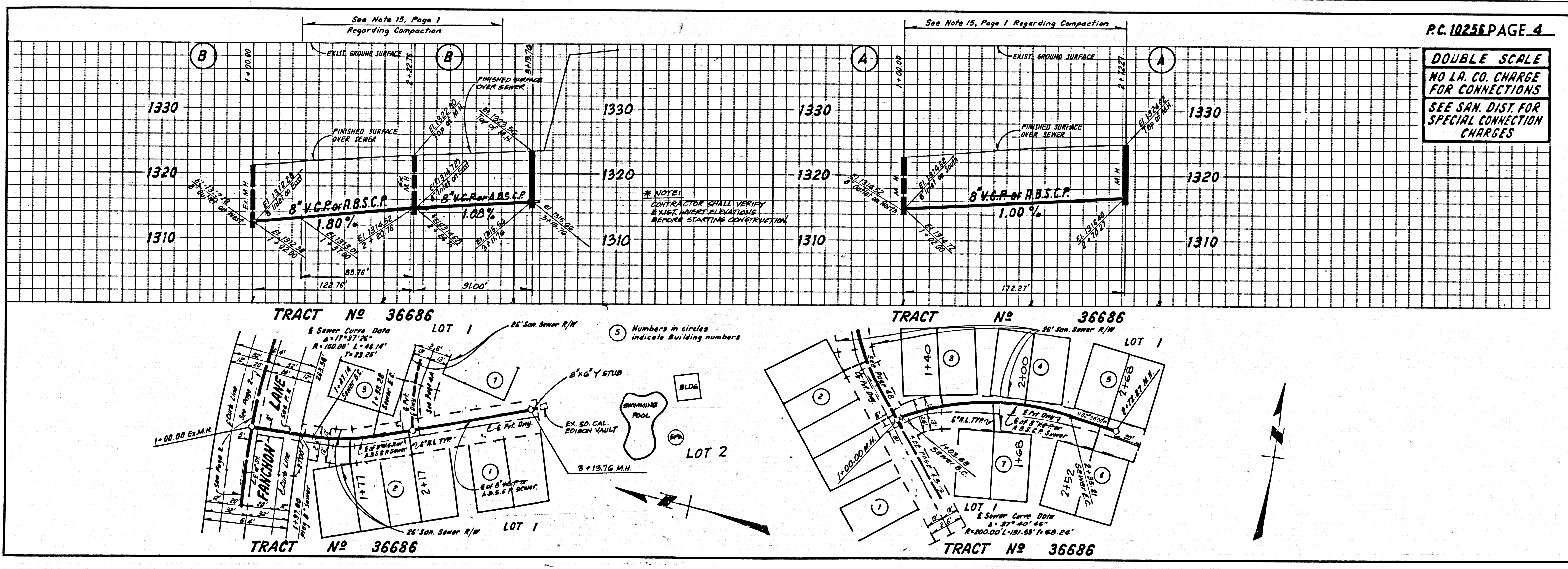
P.C. 10256 PAGE 3

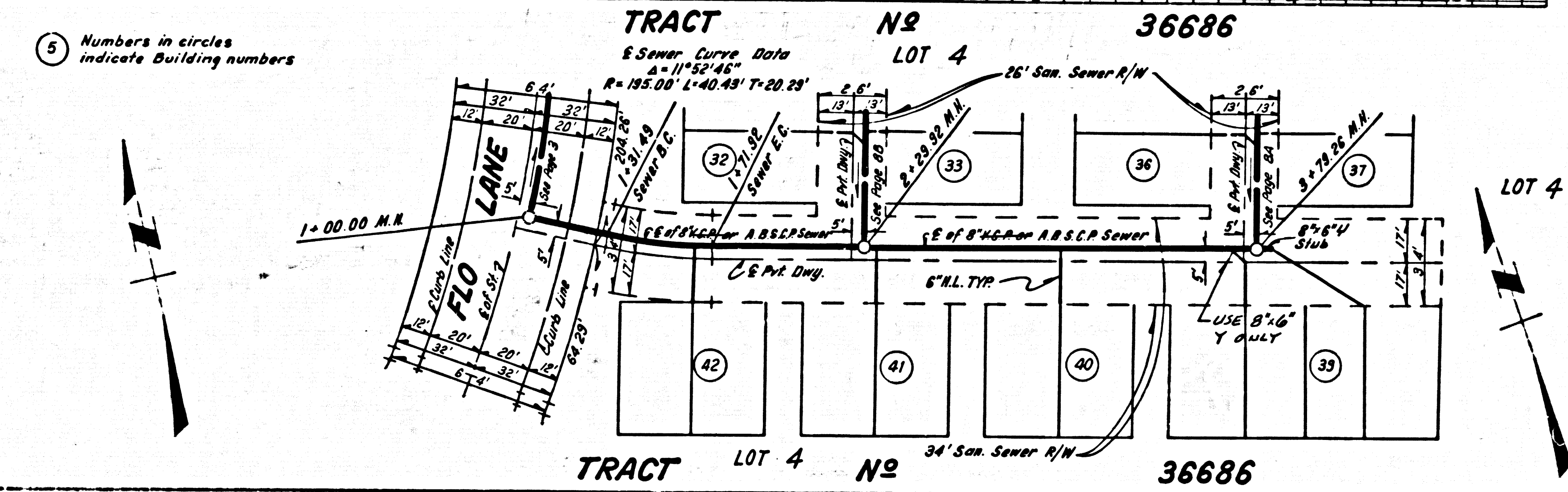
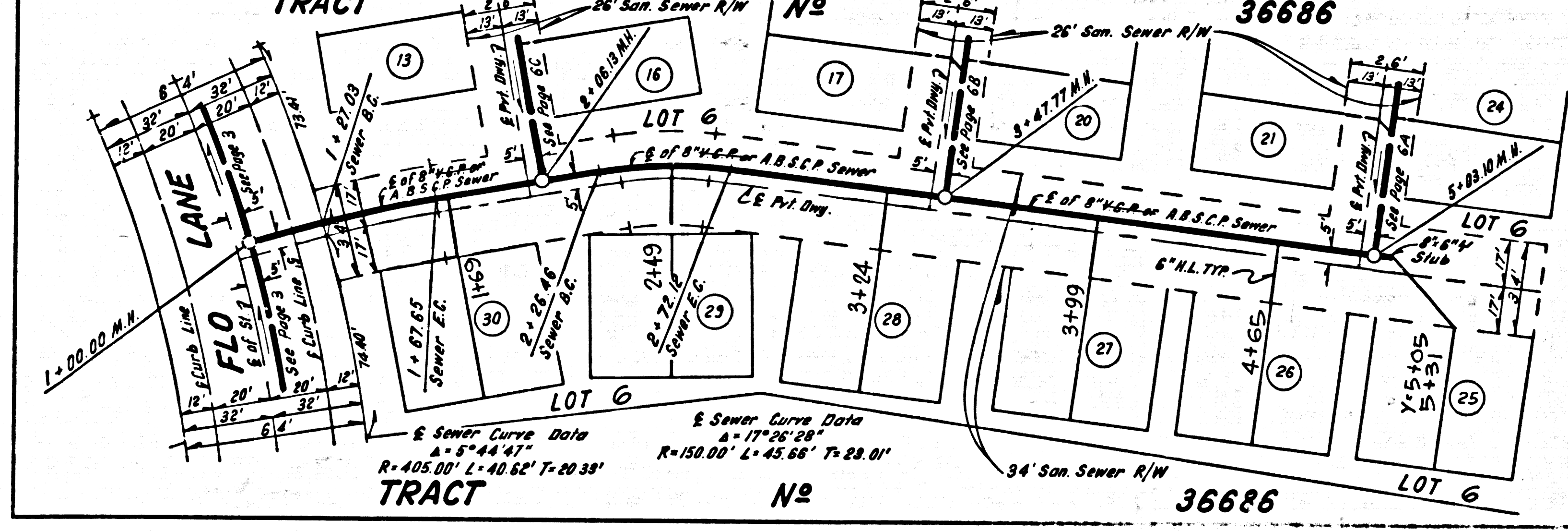
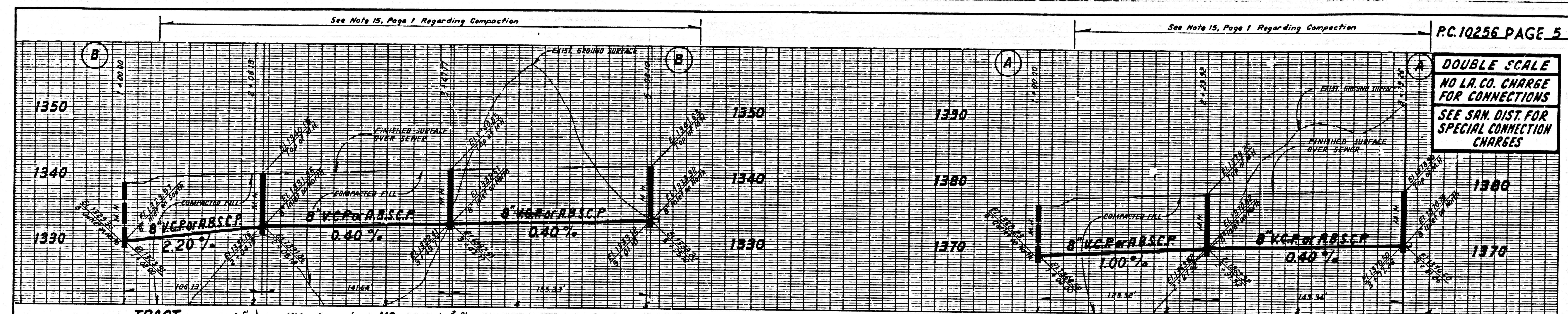
DOUBLE SCALE
NO L.A. CO. CHARGE
FOR CONNECTIONS
SEE SAN. DIST. FOR
SPECIAL CONNECTION
CHARGES



P.C. 10256 PAGE 4

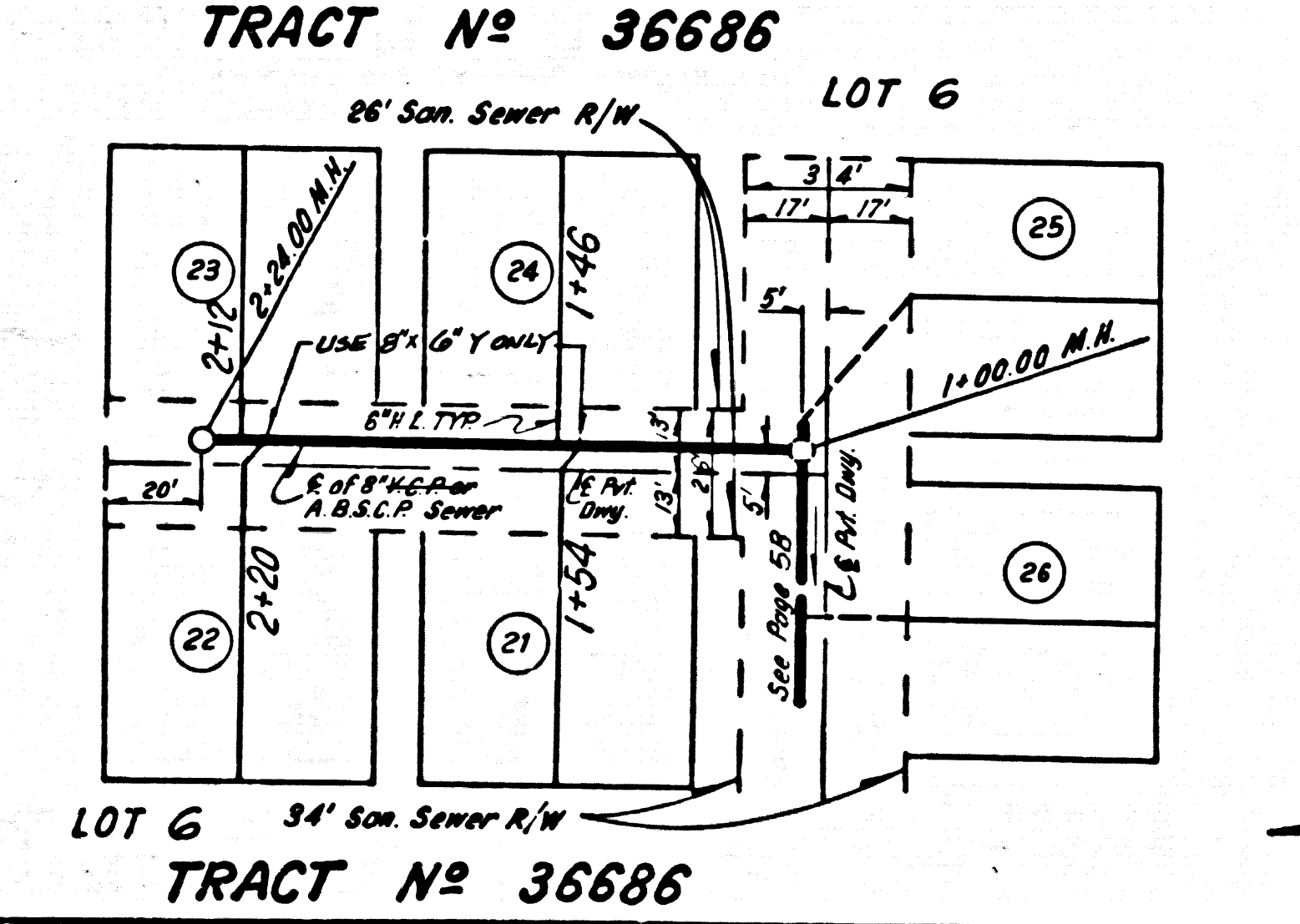
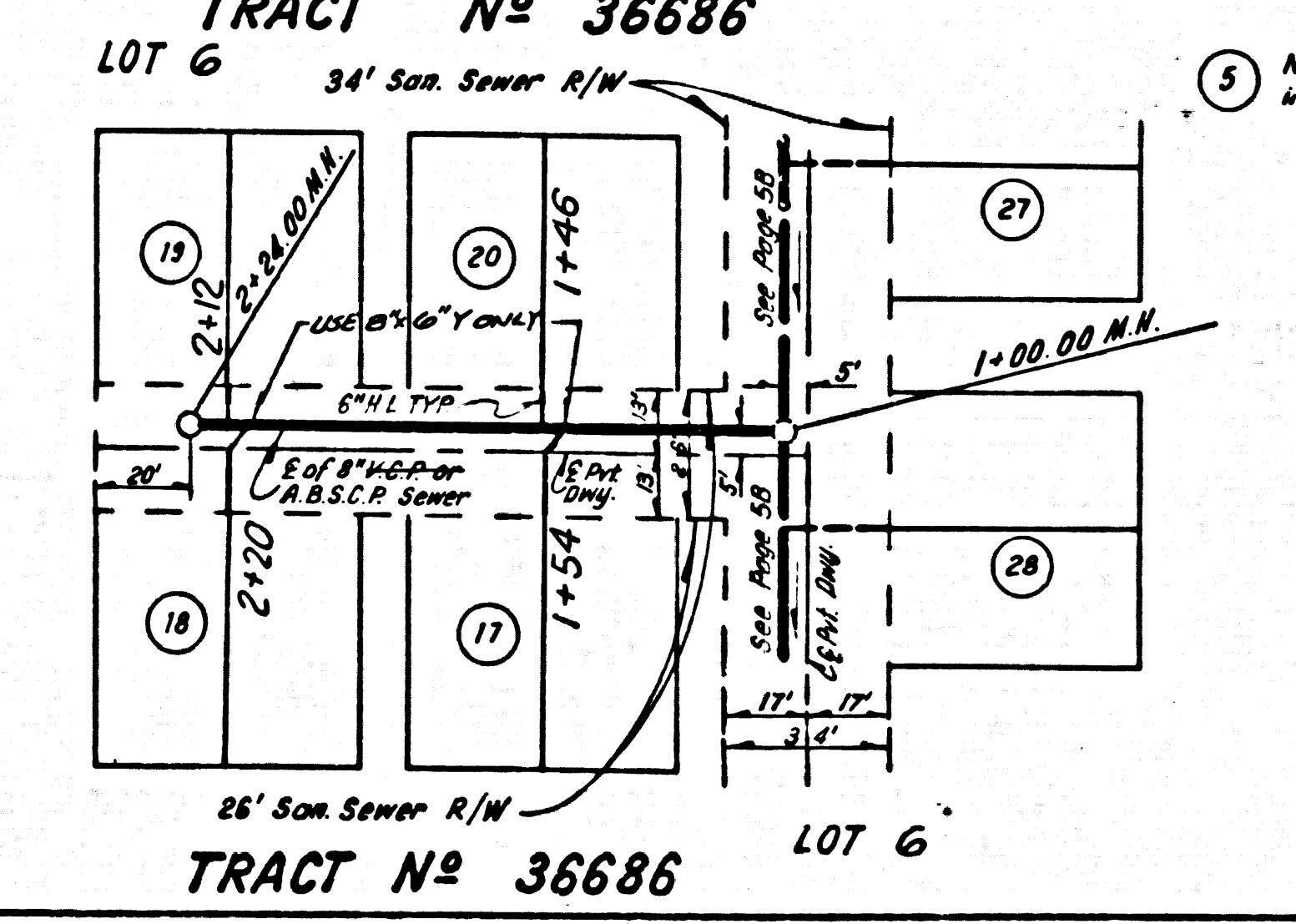
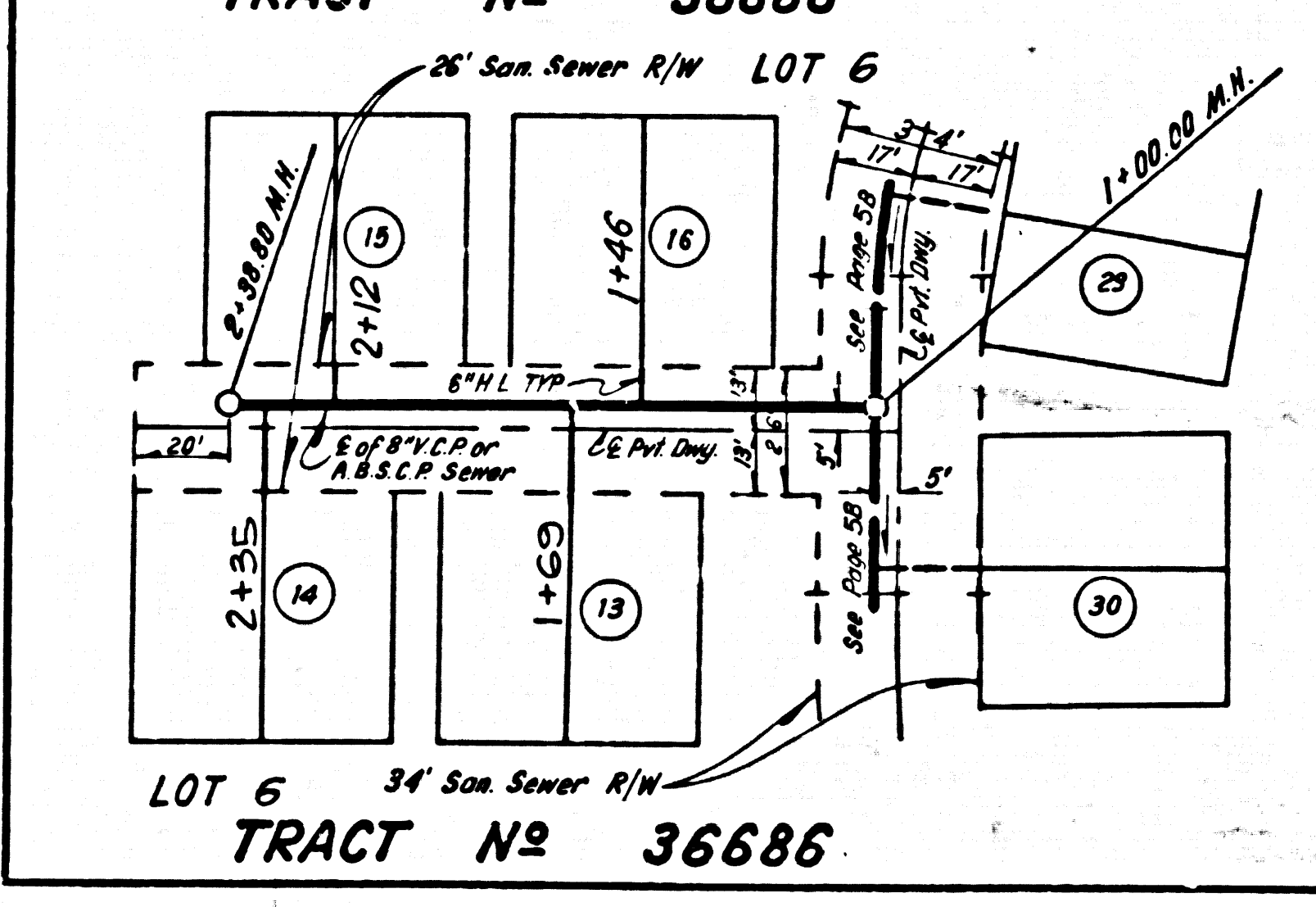
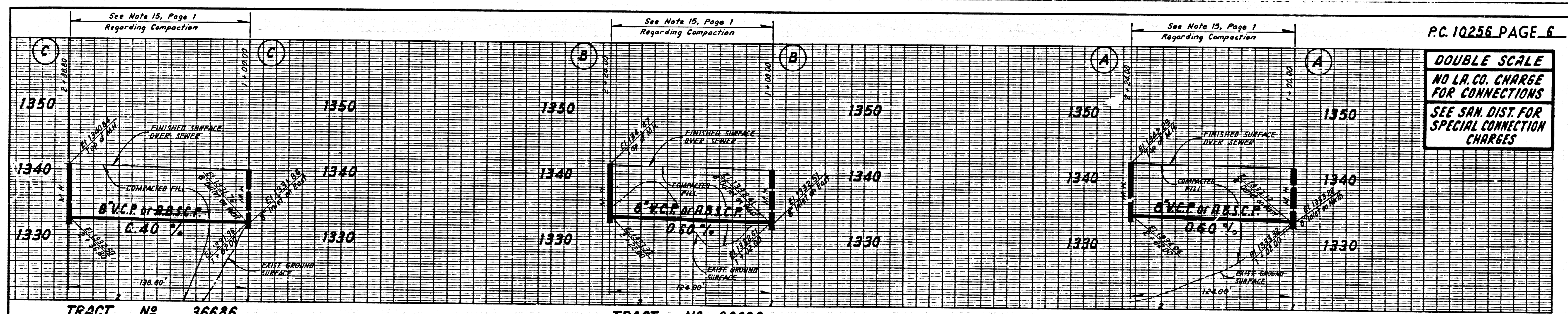
DOUBLE SCALE
NO L.A. CO. CHARGE
FOR CONNECTIONS
SEE SAN. DIST. FOR
SPECIAL CONNECTION
CHARGES





Numbers in circles indicate building numbers

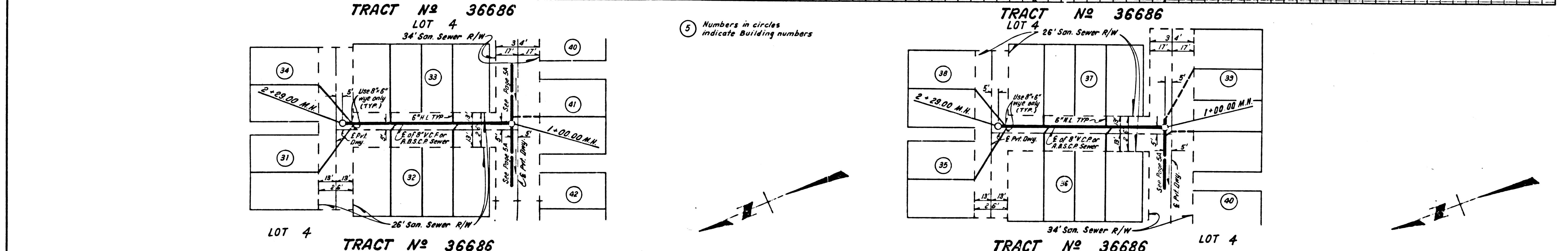
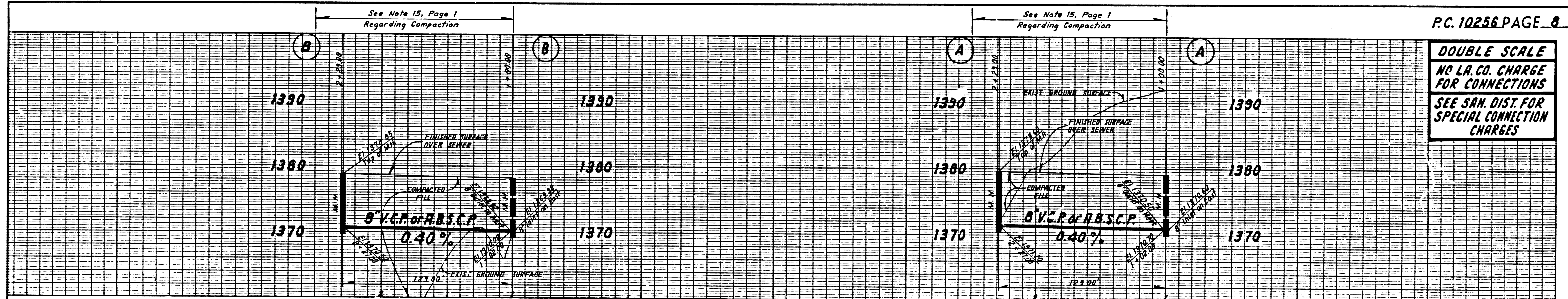
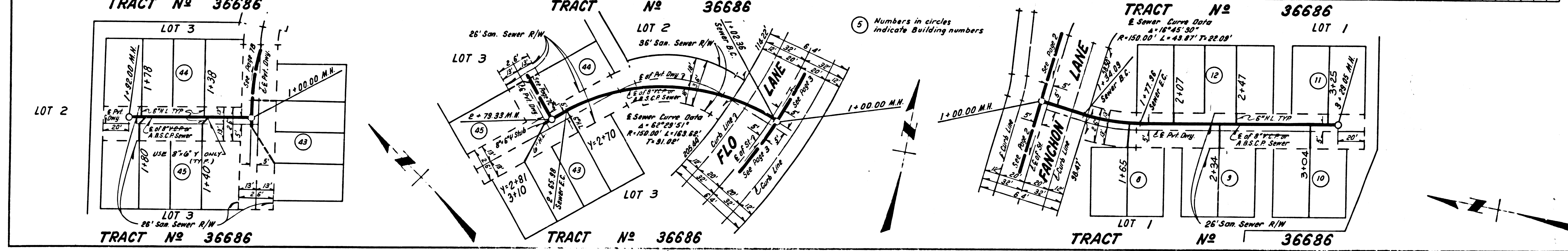
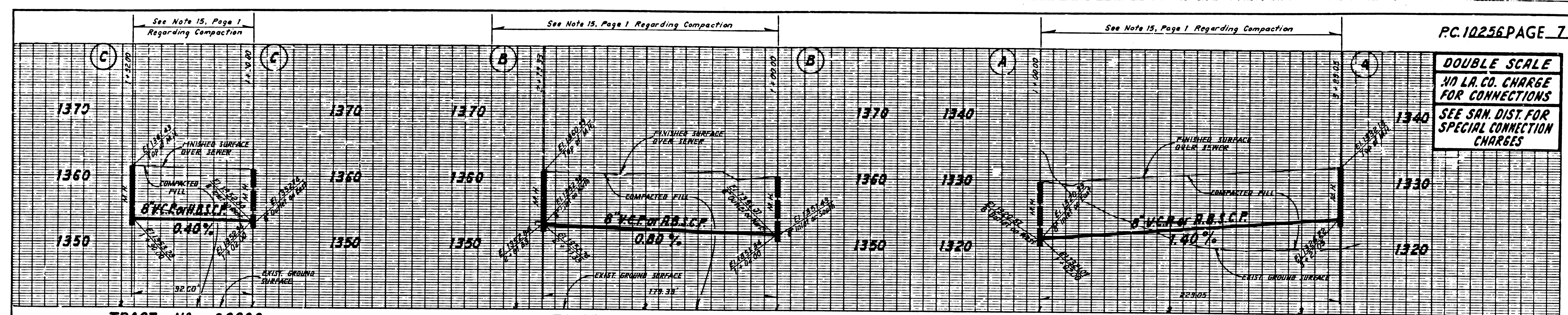
PC. 10256 PAGE 5
 DOUBLE SCALE
 NO L.A. CO. CHARGE FOR CONNECTIONS
 SEE SAN. DIST. FOR SPECIAL CONNECTION CHARGES



Numbers in circles indicate building numbers

PC. 10256 PAGE 6
 DOUBLE SCALE
 NO L.A. CO. CHARGE FOR CONNECTIONS
 SEE SAN. DIST. FOR SPECIAL CONNECTION CHARGES

32501 2A.29 28282C 2A.17 36686



4

25201 9N 09 28236 9N T39RT

RECORDED IN COMPL.