

**TRACT NO 4317A**  
**PRIVATE CONTRACT NO. 10258**  
**A-27, D-2**  
 W.S. 62  
 3 SHEETS, 6 PAGES

50730

SCALE: VERT. 1" = 4'  
 HORIZ. 1" = 40'  
 MARCH, 1964  
 PREPARED IN THE OFFICES OF  
**ENGINEERING SERVICE CORPORATION**  
 1017 W. 10TH ST., LOS ANGELES, CALIF. 90015  
 COLVER CL. 1017  
 BY: *J. K. Howell*  
 REG. C. E. NO. 13095

THE FOLLOWING LATEST REVISED STANDARD PLANS ON FILE IN THE OFFICE OF THE COUNTY ENGINEER SHALL APPLY IN THE CONSTRUCTION OF THIS PROJECT:

LEGEND	1.1
MINIMUM PUBLIC SAFETY REQUIREMENTS	1.2
BRICK MANHOLE	1.3
STANDARD MANHOLE STEP	1.4
BEDDING FOR SEWER PIPE	1.5
CHASING AND ENCASMENT	1.6
WYE OR Tee SUPPORT	1.7
ALLOWABLE TRENCH WIDTHS	1.8
LOCKING MANHOLE TRAP AND COVER	1.9
NON-SPRINKLED PRECAST CONCRETE MANHOLE	1.10

COUNTY OF LOS ANGELES, CALIFORNIA  
 STEPHEN J. KOONCE, COUNTY ENGINEER  
 CHARLES W. CARRY, CHIEF ENGINEER  
 APPROVED: *Brian D. Hagan* 7-9-64  
 CHECKED: *John A. Hill* 7-9-64  
 REG. C. E. NO. 32149  
 SANTA CLARITA VALLEY BLDG. DIST. 82

B.M. CL 2925 ELEV. 1321.183  
 15' HIGH CONCRETE WALL ON 47' FT. 8" C/L SAN FERNANDO ROAD 107' 8" W. OF E. END CORNER 1.21' N. CONC. BLOCK WALL @ E. END 2337 SAN FERNANDO ROAD AND (SAN NE-L).  
 NEWHALL QUAD. 19 78

**DOUBLE SCALE**

**CONSTRUCTION NOTES: (CONT.)**

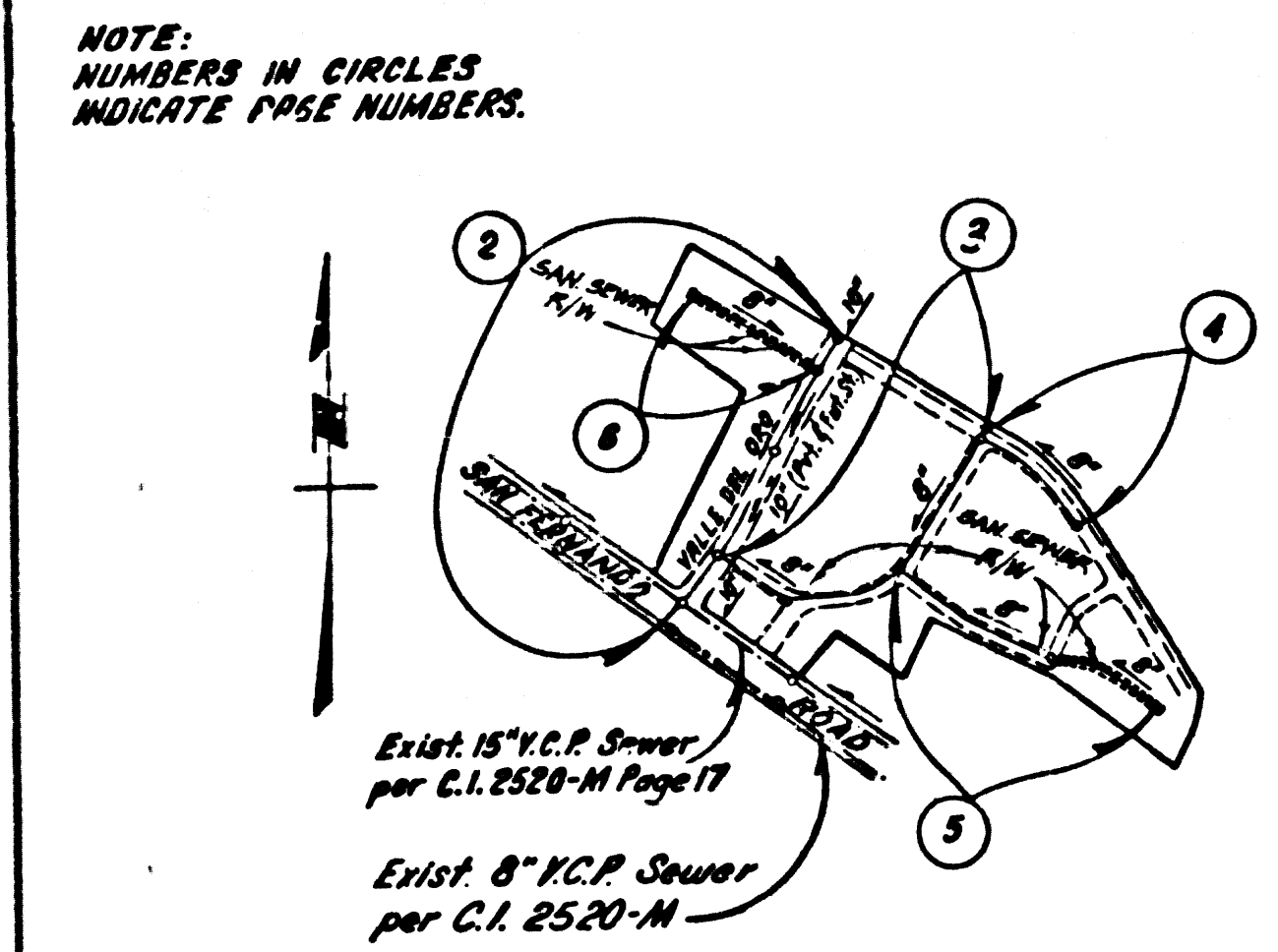
16. FULL COMPLIANCE WITH PART IV OF THE SPECIAL PROVISIONS IS REQUIRED FOR THE INSTALLATION OF A.B.S. COMPOSITE PIPE.
17. MANHOLE WATER STOP SOCKETS AND FLANGES ARE REQUIRED FOR THE CONNECTION OF A.B.S. COMPOSITE PIPE TO MANHOLE STRUCTURES.
18. A.B.S. SOLID WALL PIPE MUST BE USED FOR WYE AND HOUSE LATERAL CONNECTIONS TO A.B.S. COMPOSITE MANHOLE SEWER PIPE.
19. 3 DEGREE DEFLECTION COEFFICIENTS ARE REQUIRED FOR RADII OF CURVATURE LESS THAN 300 FEET WHEN USING 8" A.B.S.C.P.
20. A.B.S. COMPOSITE PIPE SHALL BE BEDDED IN CONFORMANCE WITH THE TABLE IN SECTION B-3.1 OF PART IV OF SPECIAL PROVISIONS.
21. NO CONNECTION FOR THE DISPOSAL OF INDUSTRIAL WASTE IS ALLOWED IF A.B.S. COMPOSITE PIPE IS USED.
22. SEWER LINE CURVATURE SHALL NOT BE ACHIEVED BY PULLING OF JOINTS OR BEVELING PIPE ENDS WHEN USING PLASTIC PIPE INCLUDING A.B.S. COMPOSITE PIPE.

NO CONNECTION FOR THE DISPOSAL OF INDUSTRIAL WASTES SHALL BE MADE TO SEWERS SHOWN ON THESE DRAWINGS UNTIL A PERMIT FOR INDUSTRIAL WASTEWATER DISCHARGE HAS BEEN ISSUED BY THE SANITATION DISTRICT'S FOR SAID CONNECTION.

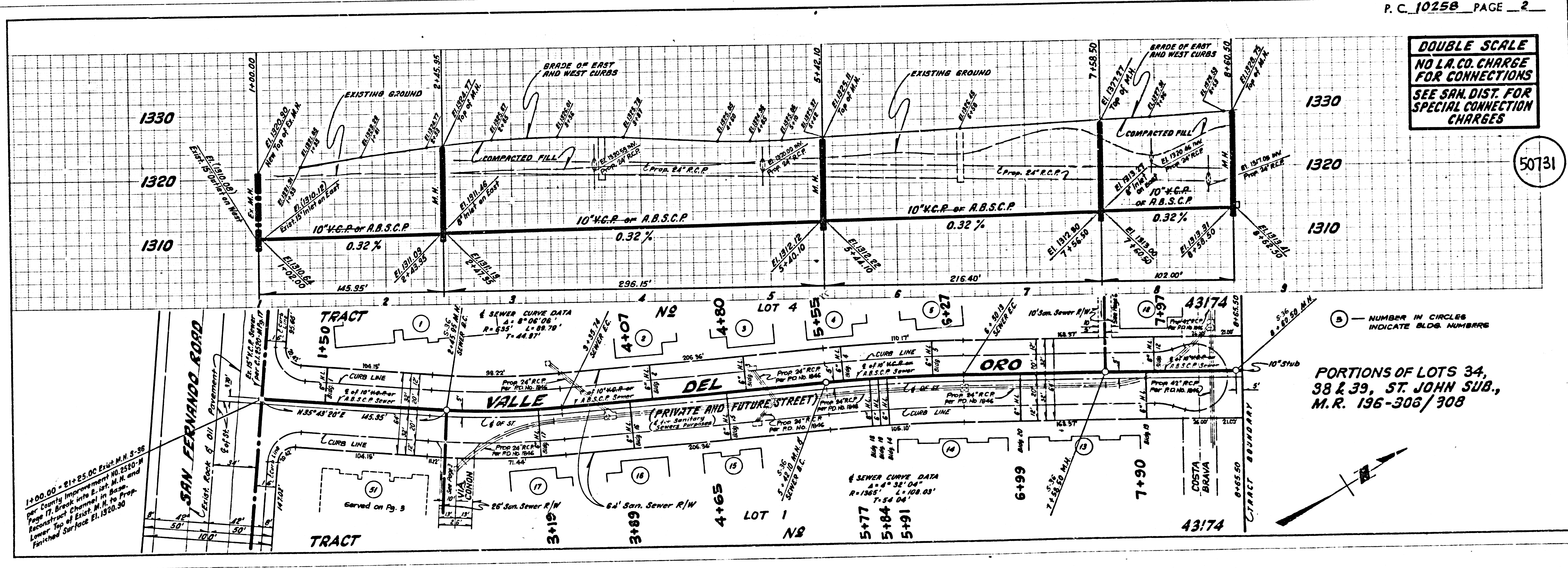
BEFORE BREAKING INTO OR CONSTRUCTION ON A COUNTY SANITATION DISTRICT SEWER AND PRIOR TO FINAL ACCEPTANCE OF THE PROJECT, SANITATION DISTRICT INSPECTOR SHALL BE NOTIFIED BY PHONE (805) 942-5757 SO THAT REQUIRED INSPECTION CAN BE MADE.

- GENERAL NOTES:**
1. ELEVATIONS ARE IN FEET ABOVE U.S.C. & G.S. SEA LEVEL DATUM OF 1929.
  2. NO REVISIONS SHALL BE MADE IN THESE PLANS WITHOUT THE APPROVAL OF THE COUNTY ENGINEER.
  3. NO REPRESENTATIVE OF THE COUNTY ENGINEER WILL BE ON SITE AT ANY PORTION OF THE WORK.
  4. GRADES TO WHICH THIS IMPROVEMENT IS TO BE CONSTRUCTED ARE SHOWN ON CURBS AND PROFILES. SINGLE POINTS FOR THE CURB CORNER CENTER LINE OF STREETS OR CENTER LINE OF ALLEYS ARE SHOWN BY CIRCLES ON PROFILES. AT ALL POINTS BETWEEN DESIGNATED POINTS THE GRADE SHALL BE ESTABLISHED SO AS TO CONFORM TO A STRAIGHT LINE DRAWN BETWEEN SAID DESIGNATED POINTS.
  5. THE PRIVATE ENGINEER SHALL FURNISH THE COUNTY ENGINEER WITH GRADE SHEETS AND STATIONING FOR ALL HOUSE, APPLS. AND "OR" T. BRANCHES AND SHALL PROVIDE STAKES FOR THEM AT THE PROPER LOCATIONS WITH STATIONING PLAINLY MARKED. ALL HOUSE LATERALS SHALL BE CONSTRUCTED IN A STRAIGHT ALIGNMENT AT RIGHT ANGLES FROM THE MAIN LINE SEWER PIPE. AS SHOWN ON THE PLANS AND HOUSE LATERAL FROM CHIMNEY SHALL NOT HAVE AN ANGLE LESS THAN 45° WITH THE MAIN LINE SEWER. ANY CHANGE IN ALIGNMENT SHALL BE REQUESTED IN WRITING BY THE PRIVATE ENGINEER.
  6. THE PRIVATE ENGINEER SHALL FURNISH THE HOUSE LATERAL DEPTH AT THE PROPERTY LINE BELOW THE TOP OF CURB ELEVATION FOR EACH HOUSE LATERAL ON THE UPRIDE SIDE.
  7. BEFORE WORK CAN BE STARTED THE CONTRACTOR MUST OBTAIN A PERMIT TO EXCAVATE IN COUNTY STREETS FROM THE L.A. COUNTY ROAD DEPT. DISTRICT OFFICE NO. 5 AND PAY A FEE TO THE COUNTY ENGINEER 500 S. VERMONT AVENUE, LOS ANGELES, CALIF. 90005 TO COVER THE COST OF CONSTRUCTION INSPECTION AND RECORD PLANS.
  8. IF WORK IS TO BE DONE IN A STATE HIGHWAY A PERMIT MUST BE OBTAINED FROM THE STATE OF CALIFORNIA, DIVISION OF HIGHWAYS, 300 SOUTH SPRING STREET, LOS ANGELES, CALIFORNIA.
  9. APPROVAL OF THIS PLAN BY THE COUNTY ENGINEER DOES NOT CONSTITUTE A REPRESENTATION AS TO THE ACCURACY OF THE LOCATION OF OR THE EXISTENCE OR NON-EXISTENCE OF ANY UNDERGROUND UTILITY PIPE OR STRUCTURE WITHIN THE LIMITS OF THIS PROJECT. THIS NOTICE APPLIES TO ALL GRADES.
  10. REFER TO SECTION T-1.4.1 OF THE STANDARD SPECIFICATIONS REGARDING SAFETY ORDERS.
  11. UPON THE ISSUANCE OF THE REQUIRED SEWER CONSTRUCTION PERMIT, THE CONTRACTOR SHALL OBTAIN AND FILE WITH THE COUNTY ENGINEER COPIES OF A PERMIT TO EXCAVATE IN COUNTY STREETS FROM THE LOS ANGELES COUNTY ROAD DEPARTMENT, A PERMIT FOR EXCAVATIONS AND TRENCHES FROM THE STATE OF CALIFORNIA, DIVISION OF INDUSTRIAL SAFETY AND A CERTIFICATE OF WORKERS COMPENSATION INSURANCE WITH THE DEPARTMENT OF COUNTY ENGINEER 500 SOUTH VERMONT, RM. 408, LOS ANGELES, CALIFORNIA 90005, NAMED AS THE CERTIFICATE HOLDER. IT MUST BE NOTIFIED 30 DAYS PRIOR TO CANCELLATION OF POLICY.

- CONSTRUCTION NOTES:**
1. WORK SHALL BE CONSTRUCTED ACCORDING TO THE STANDARD SPECIFICATIONS FOR PUBLIC WORKS CONSTRUCTION (L.S.E. EDITION WITH THE SUPPLEMENTS) COUNTY ENGINEER SPECIAL PROVISIONS FOR THE CONSTRUCTION OF SANITARY SEWERS DATED SEPT. 21, 1978 AND SHALL BE PERFORMED ONLY IN THE PRESENCE OF THE COUNTY ENGINEER.
  2. THE CONTRACTOR SHALL NOTIFY THE PROJECT MANAGEMENT DIVISION BY TELEPHONE 726-2156 AT LEAST TWENTY-FOUR HOURS BEFORE STARTING ANY WORK UNDER THIS CONTRACT.
  3. HOUSE LATERALS TO BE CONSTRUCTED WITH INVERTS AT PROPERTY LINE 8 FEET BELOW CURB GRADE EXCEPT AS NOTED.
  4. 8" A.B.S. SOLID WALL PIPE SHALL BE USED FOR CONNECTIONS TO MANHOLE BRANCHES OR A.B.S.C.P. IN UNDEVELOPED AREAS AS NOTED.
  5. PROVIDE STAKES ON THE PROPERTY LINE OR PROPERTY LINES PRODUCED AT RIGHT ANGLES TO THE SEWER LINE AT THE CENTER LINE OF EACH MANHOLE.
  6. MANHOLE TOPS IN UNIMPROVED RIGHTS OF WAY TO BE SIX INCHES ABOVE FINISHED GRADE.
  7. WITHESED CLAY PIPE JOINTS SHALL BE TYPE "D" OR "D" PER STANDARD SPECIFICATIONS SECTION 206-2.
  8. IF A POWER POLE IS WITHIN THREE FEET OF THE SEWER THE SEWER SHALL BE ENCASED PER S-23, CASE II, TWO FEET ON EACH SIDE FROM THE POINT OF INTERFERENCE.
  9. IF DURING THE COURSE OF CONSTRUCTION IT IS DETERMINED THAT THERE IS LESS THAN FOUR FEET OF COVER OVER THE TOP OF A MAIN LINE OR HOUSE LATERAL SEWER WHICH IS NOT INDICATED ON THE PLANS THE PIPE SHALL BE ENCASED PER S-23, CASE II UNLESS OTHERWISE APPROVED BY THE COUNTY ENGINEER.
  10. ALL JOINTS BETWEEN CAST IRON PIPE AND WITHESED CLAY PIPE SHALL BE MADE WITH A RUBBER SLEEVE JOINT TYPE "C" OR "D".
  11. ALL JOINTS BETWEEN CAST IRON PIPE & A.B.S.C.P. SHALL BE MADE WITH APPROVED FITTINGS.
  12. ALL JOINTS BETWEEN A.B.S.C.P. & A.B.S.C.P. SHALL BE MADE WITH APPROVED FITTINGS.
  13. REINFORCE ALL TRENCHES WITHIN WAVED AREAS TO MEET L.A. COUNTY ROAD DEPT. OR CALIFORNIA STATE HIGHWAY REQUIREMENT IN ACCORDANCE WITH PERMITS.
  14. FULL COMPLIANCE WITH SECTION 206-1.35 OF THE SPECIAL PROVISIONS WILL BE REQUIRED FOR BACKFILL IN STREETS. CERTIFICATION OF BACKFILL COMPACTION AND SAND EQUIVALENTS BY A QUALIFIED REGISTERED TESTING LABORATORY SHALL BE PROVIDED BY THE PERMITTEE PRIOR TO THE ISSUANCE OF A CERTIFICATE OF PARTIAL ACCEPTANCE.
  15. SPECIAL BACKFILL IN EXISTING CONSTRUCTION (A) BACKFILL TRENCH AND REPLACE OTHER EARTH ROADS TO ACHIEVE THE NATURAL OR FINISHED GRADES AND SLOPES SHOWN ON THE GRADING PLAN APPLICABLE FOR THIS OR DEVELOPMENT BY THE BUILDING AND SAFETY DIVISION (B) ALL BACKFILL AND EARTH REPLACED SHALL BE COMPACTED TO A MINIMUM OF 90% OF MAXIMUM DENSITY PER A.S.T.M. STD. METHOD OF TEST D998-55 MODIFIED. ACCEPTABLE CERTIFICATION OF SUCH COMPACTION SHALL BE SUBMITTED TO THE PROJECT MANAGEMENT DIVISION.

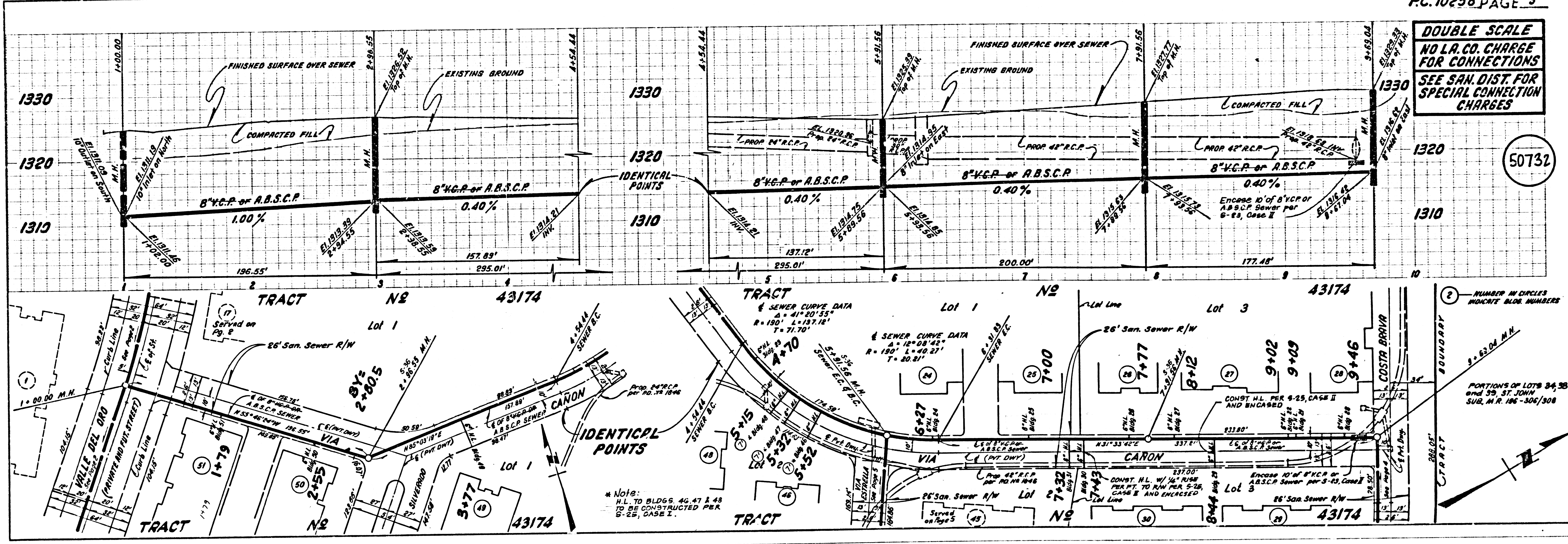


**INDEX MAP**  
**TRACT NO 4317A**  
 P.C. NO. 10258  
 Scale: 1" = 600'



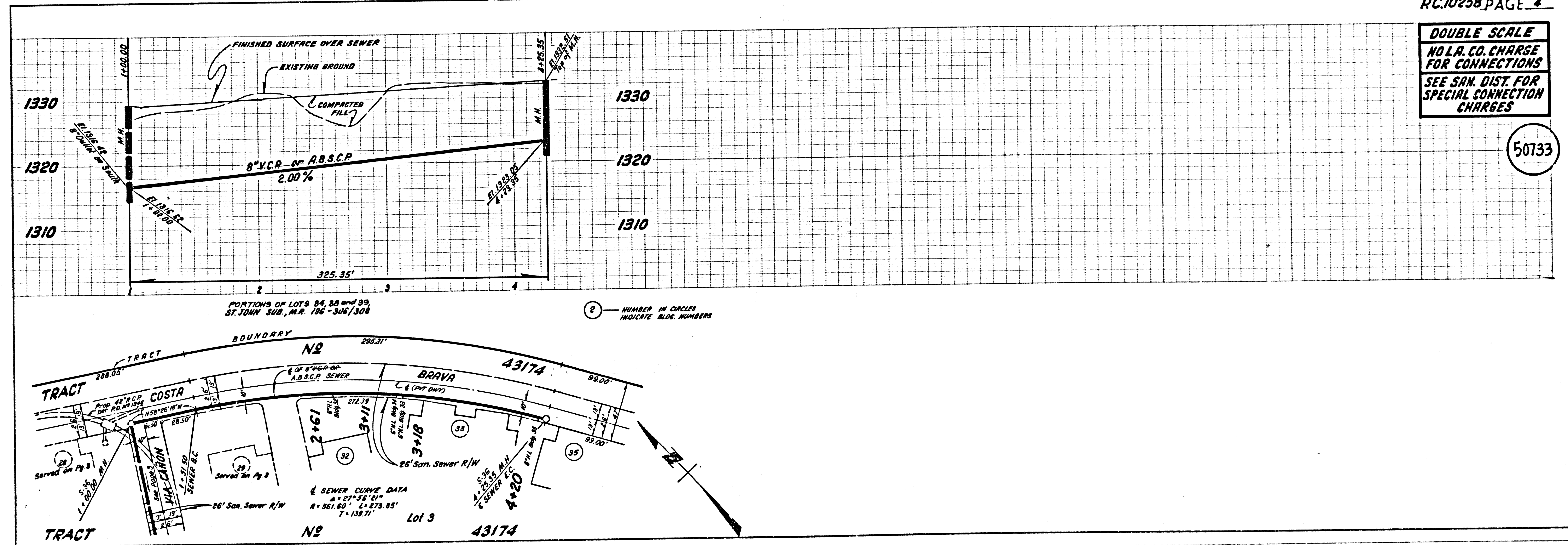
DOUBLE SCALE  
NO L.A. CO. CHARGE  
FOR CONNECTIONS  
SEE SAN. DIST. FOR  
SPECIAL CONNECTION  
CHARGES

50732



DOUBLE SCALE  
NO L.A. CO. CHARGE  
FOR CONNECTIONS  
SEE SAN. DIST. FOR  
SPECIAL CONNECTION  
CHARGES

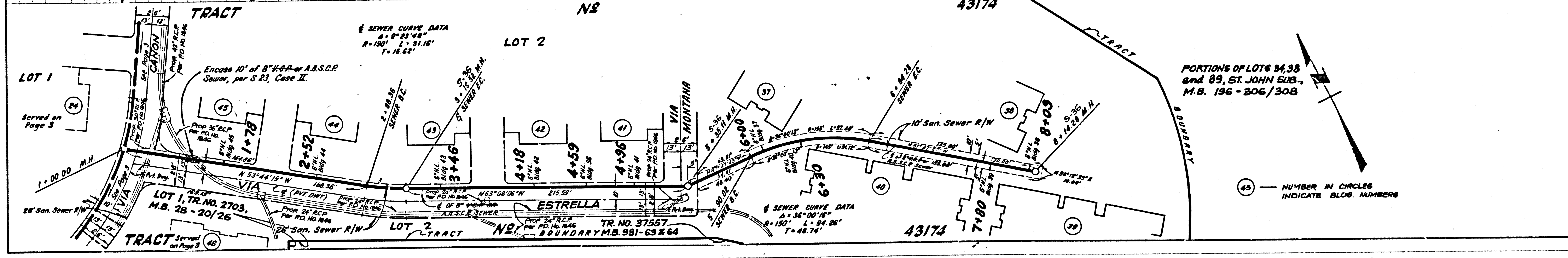
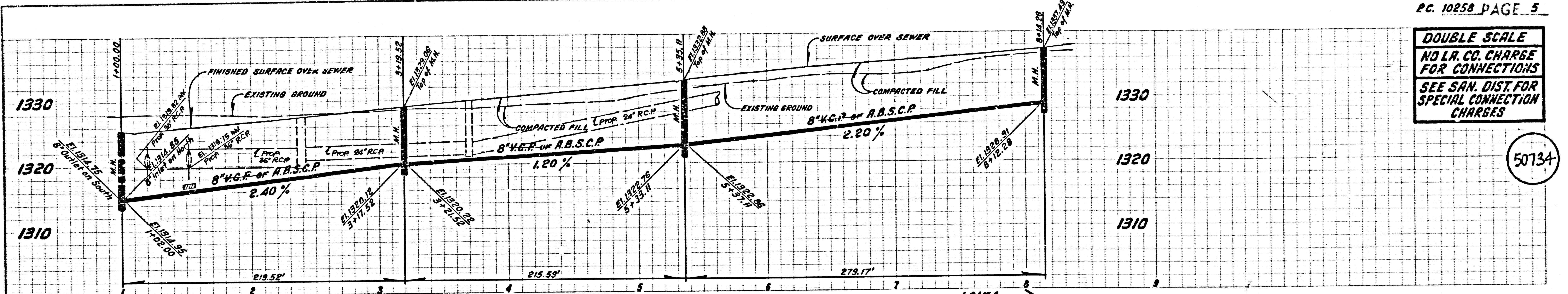
50733



82501 0N 29 N1E14 0N T309T

DOUBLE SCALE  
NO L.A. CO. CHARGE  
FOR CONNECTIONS  
SEE SAN. DIST. FOR  
SPECIAL CONNECTION  
CHARGES

50734

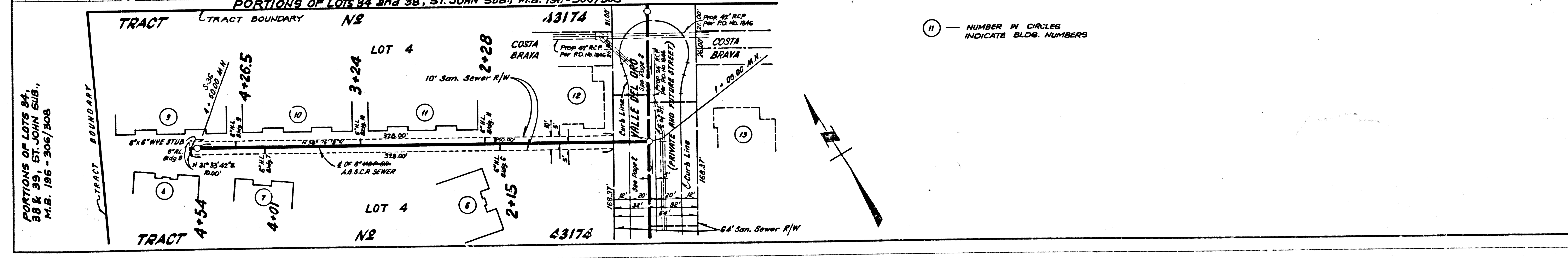
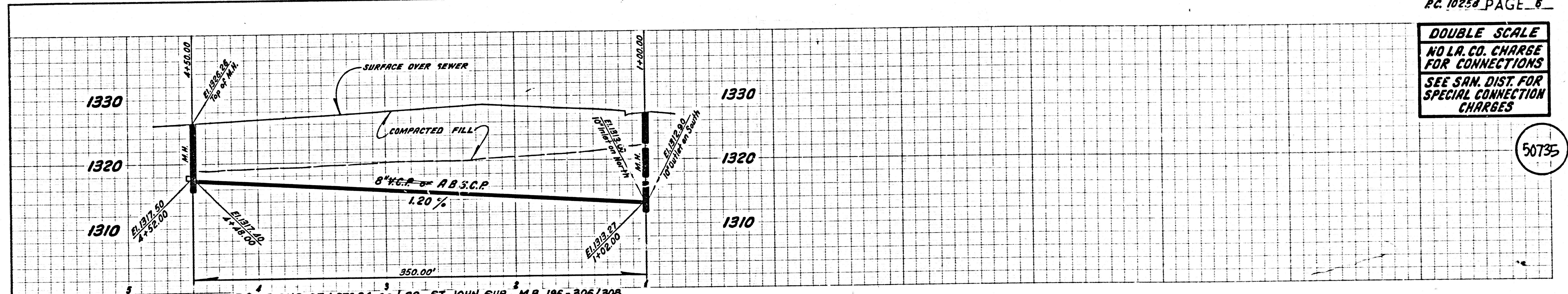


PORTIONS OF LOTS 84, 88 and 89, ST. JOHN SUB., M.B. 196-306/308

NUMBER IN CIRCLES INDICATE BLDG. NUMBERS

DOUBLE SCALE  
NO L.A. CO. CHARGE  
FOR CONNECTIONS  
SEE SAN. DIST. FOR  
SPECIAL CONNECTION  
CHARGES

50735



PORTIONS OF LOTS 84, 88 & 89, ST. JOHN SUB., M.B. 196-306/308

NUMBER IN CIRCLES INDICATE BLDG. NUMBERS

3  
16621 16 43174 16 10258  
TRACT