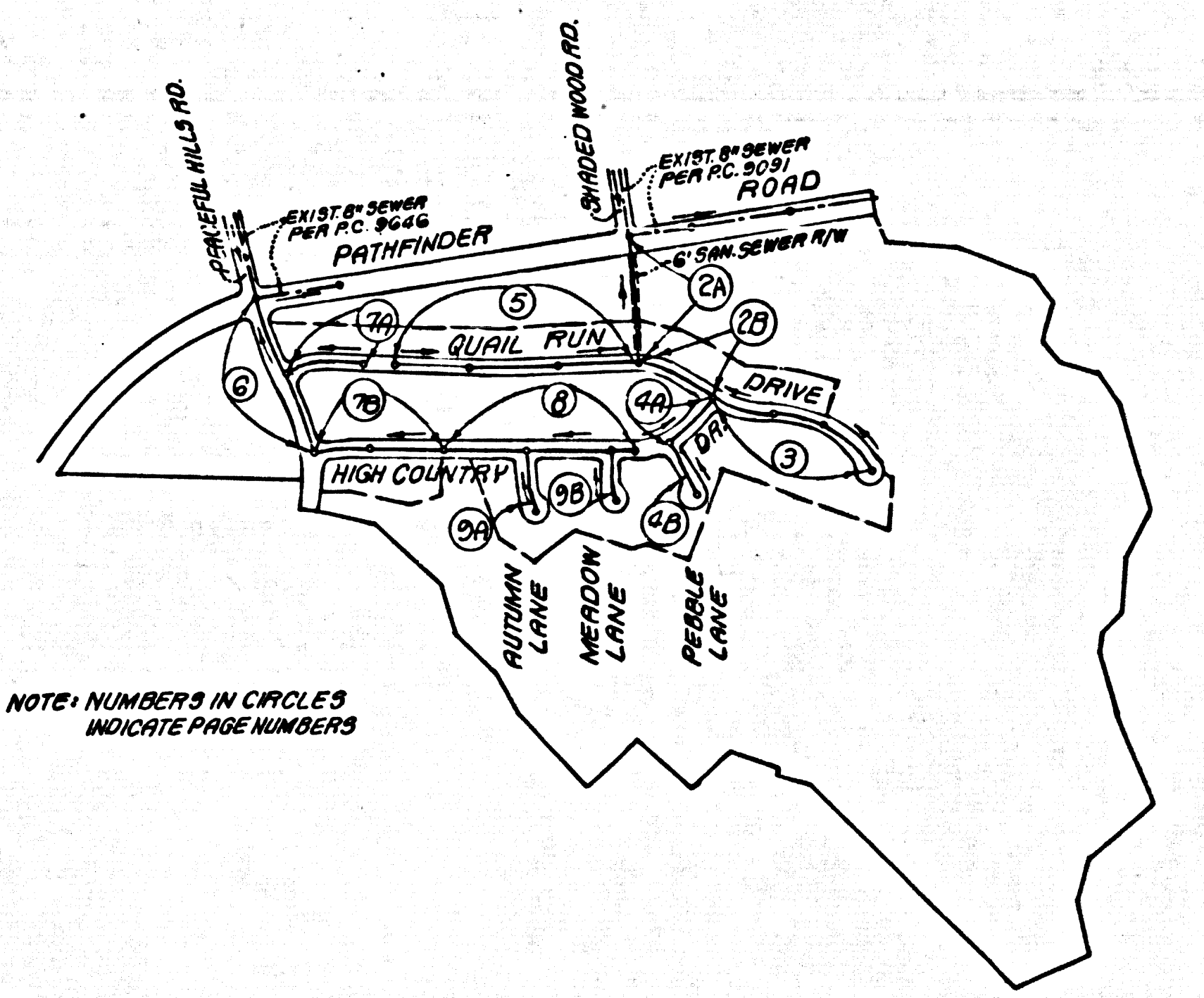


DOUBLE SCALE

B.M. CG 1211 ELEV. 821.60  
C.S. MON. FL. IN WY. ON PATIFINDER RD.  
20 FT. TO W. END BRIDGE OVER ORANGE  
FRWY. 28 FT. N. 6117 FT. W. OF INT. MKD  
(67-3A1973)  
OTTERBEIN QUAD. 1982.



NOTE: NUMBERS IN CIRCLES  
INDICATE PAGE NUMBERS

INDEX MAP  
TRACT NO. 43162  
P.C. NO. 10265  
SCALE: 1"=600'

NO CONNECTION FOR THE DISPOSAL OF INDUSTRIAL WASTES  
SHALL BE MADE TO SEWERS SHOWN ON THESE DRAWINGS UNTIL  
A PERMIT FOR INDUSTRIAL WASTEWATER DISCHARGE HAS BEEN  
ISSUED BY THE SANITATION DISTRICTS FOR SAID CONNECTION.

BEFORE BREAKING INTO OR CONSTRUCTION ON A COUNTY  
SANITATION DISTRICT SEWER AND PRIOR TO FINAL  
ACCEPTANCE OF THE PROJECT, SANITATION DISTRICT  
INSPECTOR SHALL BE NOTIFIED BY PHONE 818 - 962-8605  
SO THAT REQUIRED INSPECTION CAN BE MADE.

LOTS 118, 119, 120 AND 121 ARE NONBUILDABLE  
LOTS AND WILL NOT BE SERVED BY THIS SEWER

THE EXISTENCE AND LOCATION OF ANY UNDERGROUND PIPES  
OR STRUCTURES SHOWN ON THESE PLANS ARE OBTAINED BY  
A SEARCH OF THE AVAILABLE RECORDS. TO THE BEST OF MY  
KNOWLEDGE THERE ARE NO EXISTING UTILITIES EXCEPT  
AS SHOWN ON THESE PLANS. THE CONTRACTOR IS REQUIRED  
TO TAKE DUE PRECAUTIONARY MEASURES TO PROTECT  
THE UTILITIES SHOWN AND ANY OTHER LINES NOT  
RECORDED OR NOT SHOWN ON THESE PLANS.

Edward J. Pearson  
R.C.E. 9783

- GENERAL NOTES:**
- ELEVATIONS ARE IN FEET ABOVE U.S.C. & G.S. SEA LEVEL DATUM OF 1929.
  - NO REVISIONS SHALL BE MADE IN THESE PLANS WITHOUT THE APPROVAL OF THE COUNTY ENGINEER.
  - NO REPRESENTATIVE OF THE COUNTY ENGINEER WILL SURVEY OR LAY OUT ANY PORTION OF THE WORK.
  - GRADES TO WHICH THIS IMPROVEMENT IS TO BE CONSTRUCTED ARE SHOWN ON PLANS AND PROFILES. GRADE POINTS FOR TOP OF CURBS, CENTER LINE OF STREETS, OR CENTER LINE OF ALLEYS ARE SHOWN BY CIRCLES ON PROFILES. AT ALL POINTS BETWEEN DESIGNATED POINTS THE GRADE SHALL BE ESTABLISHED SO AS TO CONFORM TO A STRAIGHT LINE DRAWN BETWEEN SAID DESIGNATED POINTS.
  - THE PRIVATE ENGINEER SHALL FURNISH THE COUNTY ENGINEER WITH GRADING SHEETS AND STATIONING FOR ALL HOUSE LATERALS AND "Y" OR "T" BRANCHES AND SHALL PROVIDE STAKES FOR THEM AT THEIR PROPER LOCATIONS WITH STATIONING PLAINLY MARKED. ALL HOUSE LATERALS SHALL BE CONSTRUCTED IN A STRAIGHT ALIGNMENT AT RIGHT ANGLES FROM THE MAIN LINE SEWER EXCEPT AS SHOWN ON THE PLANS. HOUSE LATERALS FROM CHIMNEYS SHALL NOT HAVE AN ANGLE OF LESS THAN 45° WITH THE MAIN LINE SEWER. ANY CHANGE IN ALIGNMENT SHALL BE REQUESTED IN WRITING BY THE PRIVATE ENGINEER.
  - THE PRIVATE ENGINEER SHALL FURNISH THE HOUSE LATERAL DEPTH AT THE PROPERTY LINE BELOW THE TOP OF CURB ELEVATION FOR EACH HOUSE LATERAL ON THE GRADE SHEET.
  - BEFORE WORK CAN BE STARTED, THE CONTRACTOR MUST OBTAIN A PERMIT TO EXCAVATE IN COUNTY STREETS FROM THE L.A. COUNTY ROAD DEPT., DISTRICT OFFICE NO. 100, AND PAY A FEE TO THE COUNTY ENGINEER, 330 S. VERMONT AVENUE, LOS ANGELES, CA 90007 TO COVER THE COST OF CONSTRUCTION INSPECTION AND RECORD PLANS.
  - IF WORK IS TO BE DONE IN A STATE HIGHWAY, A PERMIT MUST BE OBTAINED FROM THE STATE OF CALIFORNIA, DIVISION OF HIGHWAYS, 120 SOUTH SPRING STREET, LOS ANGELES, CALIFORNIA.
  - APPROVAL OF THIS PLAN BY THE COUNTY OF LOS ANGELES DOES NOT CONSTITUTE REPRESENTATION AS TO THE ACCURACY OF THE LOCATION OF OR THE EXISTENCE OR NON-EXISTENCE OF ANY UNDERGROUND UTILITY PIPE OR STRUCTURE WITHIN THE LIMITS OF THIS PROJECT. THIS NOTE APPLIES TO ALL PAGES.
  - REFER TO SECTION 7.16.1 OF THE STANDARD SPECIFICATIONS REGARDING SAFETY ORDERS.
  - PRIOR TO THE ISSUANCE OF THE REQUIRED SEWER CONSTRUCTION PERMIT, THE CONTRACTOR SHALL OBTAIN AND FILE WITH THE COUNTY ENGINEER COPIES OF A PERMIT TO EXCAVATE IN COUNTY STREETS FROM THE LOS ANGELES COUNTY ROAD DEPARTMENT, A PERMIT FOR EXCAVATIONS AND TRENCHES FROM THE STATE OF CALIFORNIA, DIVISION OF INDUSTRIAL SAFETY AND A CERTIFICATE OF WORKERS COMPENSATION INSURANCE WITH THE DEPARTMENT OF COUNTY ENGINEER, 330 SOUTH VERMONT, P.O. BOX 108, LOS ANGELES, CALIFORNIA 90007, MAILED AS THE CERTIFICATE HOLDER TO BE NOTIFIED IN DATE PRIOR TO CANCELLATION OF POLICY.

- CONSTRUCTION NOTES:**
- WORK SHALL BE CONSTRUCTED ACCORDING TO THE STANDARD SPECIFICATIONS FOR PUBLIC WORKS CONSTRUCTION (1984 EDITION WITH '83 SUPPLEMENTS) AND COUNTY ENGINEER SPECIAL PROVISIONS FOR THE CONSTRUCTION OF SANITARY SEWERS DATED 11/82, 11/78, AND SHALL BE PROTECTED ONLY IN THE PRESENCE OF THE COUNTY ENGINEER.
  - THE CONTRACTOR SHALL NOTIFY THE PROJECT MANAGEMENT DIVISION BY TELEPHONE 738-2186 AT LEAST TWENTY-FOUR HOURS BEFORE STARTING ANY WORK UNDER THIS CONTRACT.
  - HOUSE LATERALS TO BE CONSTRUCTED WITH INVERTS AT PROPERTY LINE 8 FEET BELOW CURB GRADE EXCEPT AS NOTED.
  - "Y" OR "T" BRANCHES MAY BE USED FOR CONNECTIONS TO MAINLINE SEWERS EXCEPT AS NOTED.
  - ALL STRUCTURES SHALL BE EITHER BRICK MANHOLES PER S-3 OR PRECAST CONCRETE MANHOLES PER S-3E, EXCEPT AS NOTED.
  - PROVIDE STAKES ON THE PROPERTY LINE OR PROPERTY LINES PRODUCED AT RIGHT ANGLES TO THE SEWER LINE AT THE CENTER LINE OF EACH MANHOLE.
  - MANHOLE TOPS IN UNIMPROVED RIGHTS OF WAY TO BE SIX INCHES ABOVE FINISHED GRADE.
  - VITRIFIED CLAY PIPE JOINTS SHALL BE TYPE "D" OR "B" PER STANDARD SPECIFICATIONS SECTION 308-2.
  - IF A POWER POLE IS WITHIN THREE FEET OF THE SEWER, THE SEWER SHALL BE ENCASED PER S-2E CASE 2, TWO FEET ON EACH SIDE FROM THE POINT OF INTERFERENCE.
  - IF DURING THE COURSE OF CONSTRUCTION IT IS DETERMINED THAT THERE IS LESS THAN FOUR FEET OF COVER OVER THE TOP OF A MAIN LINE OR HOUSE LATERAL SEWER WHICH IS NOT INDICATED ON THE PLANS, THE PIPE SHALL BE ENCASED PER S-2E CASE 3 UNLESS OTHERWISE APPROVED BY THE COUNTY ENGINEER.
  - ALL JOINTS BETWEEN CAST IRON PIPE AND VITRIFIED CLAY PIPE SHALL BE MADE WITH A RUBBER SLEEVE JOINT, TYPE "C" OR "D", (WITH BUSHING IF NECESSARY) PER STANDARD SPECIFICATIONS, SECTION 308-2.
  - SEWERS TO BE TESTED FOR LEAKAGE PER SECTION 308-14 OF THE STANDARD SPECIFICATIONS AND SPECIAL PROVISIONS.
  - RESURFACE ALL TRENCHES WITHIN PAVED AREAS TO MEET L.A. COUNTY ROAD DEPT. OR CALIFORNIA STATE HIGHWAY REQUIREMENTS IN ACCORDANCE WITH PERMITS.
  - ALL COMPLIANCE WITH SECTION 308-1.3.3 OF THE SPECIAL PROVISIONS WILL BE REQUIRED FOR BACKFILL IN STREETS. CERTIFICATION OF BACKFILL COMPACTION AND SAND EQUIVALENTS BY A QUALIFIED, PERMITTED TESTING LABORATORY SHALL BE PROVIDED BY THE PERMITTEE PRIOR TO THE ISSUANCE OF A CERTIFICATE OF PARTIAL ACCEPTANCE.
  - SPECIAL BACKFILL IN EASEMENT CONSTRUCTION: (A) BACKFILL TRENCH AND REPLACE OTHER EARTH SO AS TO ACHIEVE THE NATURAL OR FINISHED GRADES AND SLOPES SHOWN ON THE GRADING PLAN APPROVED FOR THIS DEVELOPMENT BY THE BUILDING AND SAFETY DIVISION; (B) ALL BACKFILL AND EARTH REPLACED SHALL BE COMPACTED TO A MINIMUM OF 90% OF MAXIMUM DENSITY PER A.S.T.M. METHOD OF TEST D1557 AS MODIFIED. ACCEPTABLE CERTIFICATION OF SUCH COMPACTION SHALL BE SUBMITTED TO THE PROJECT MANAGEMENT DIVISION.

**SANITARY SEWERS**

TO BE CONSTRUCTED IN  
**TRACT NO. 43162**

**PRIVATE CONTRACT NO. 10265**

W.S. 39-7, B, d  
5 SHEETS, 9 PAGES

SCALE: VERT. 1"=8'  
HORIZ. 1"=40'  
APRIL, 1984  
PREPARED IN THE OFFICES OF  
E.L. PEARSON & ASSOCIATES  
1353 W. REDONDO BEACH BLVD., GARDEN CITY, CA 90247  
BY: Edward J. Pearson  
R.C.E. No. 9783

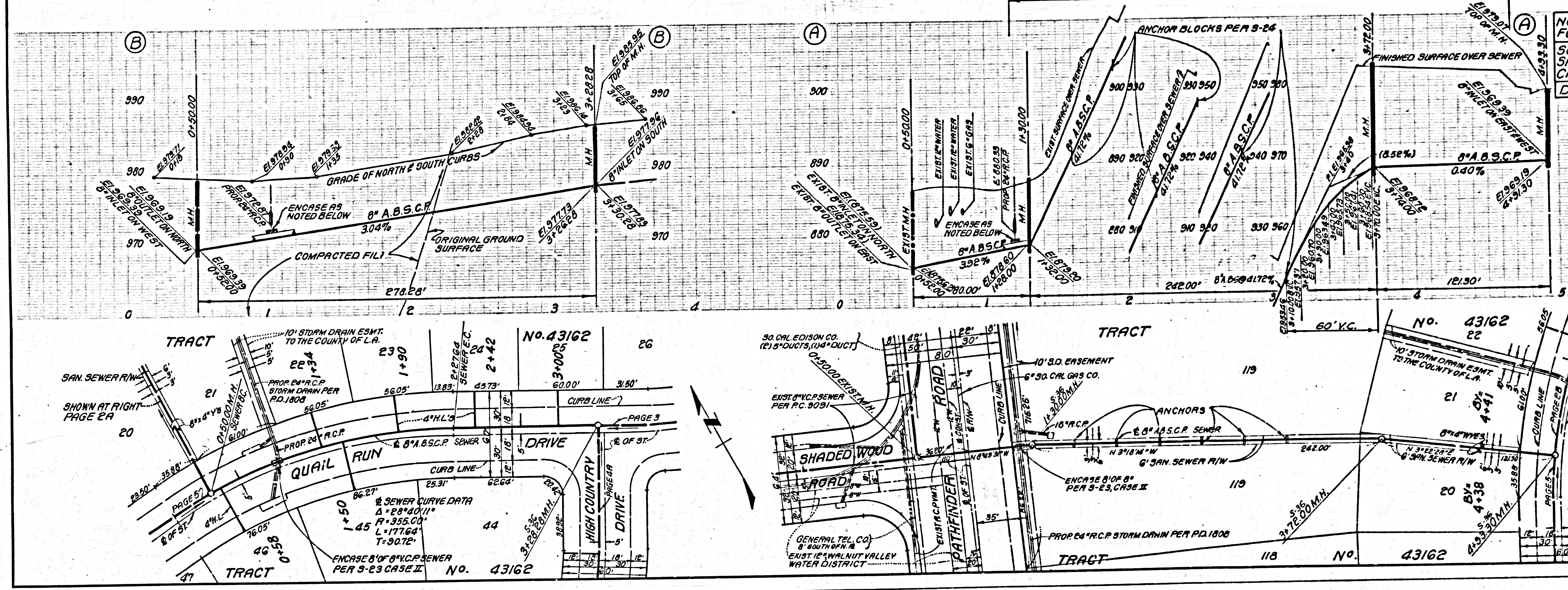
50843

THE FOLLOWING LATEST REVISED STANDARD PLANS ON FILE IN THE OFFICE OF THE COUNTY ENGINEER SHALL APPLY IN THE CONSTRUCTION OF THIS PROJECT.

MINIMUM PUBLIC SAFETY ENCROACHMENTS	S-3
BRICK MANHOLE	S-3
STANDARD MANHOLE STOP	S-3E
BRICKING FOR SEWER PIPE	S-3
CHIMNEY AND ENCASING	S-3
WYE OR TEE SUPPORT	S-3E
ALLOWABLE TRENCH WIDTHS	S-3E
LOCKING MANHOLE FRAME AND COVER	S-3E
NON-SHOCKING PRECAST CONCRETE MANHOLES	S-3E
ANCHOR BLOCK	S-3E

**COUNTY OF LOS ANGELES, CALIFORNIA**  
STEPHEN J. KOONCE, COUNTY ENGINEER CHARLES W. CANNY, CHIEF ENGINEER  
APPROVED: [Signature] DATE: 10/14/84  
CHECKED: [Signature] DATE: 10/14/84  
S.D. NO. 16841  
LA PUENTE BLDG. DIST. 200

SEE NOTE 15, PAGE 1 REGARDING COMPACTION



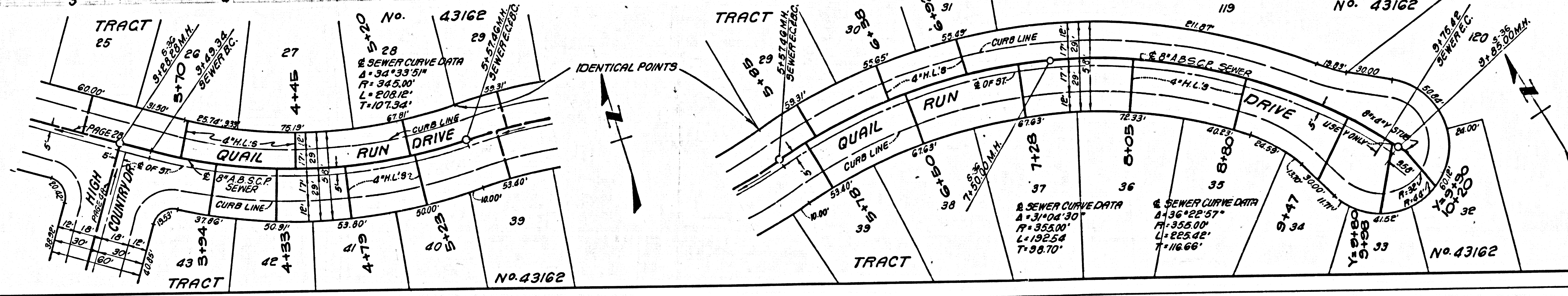
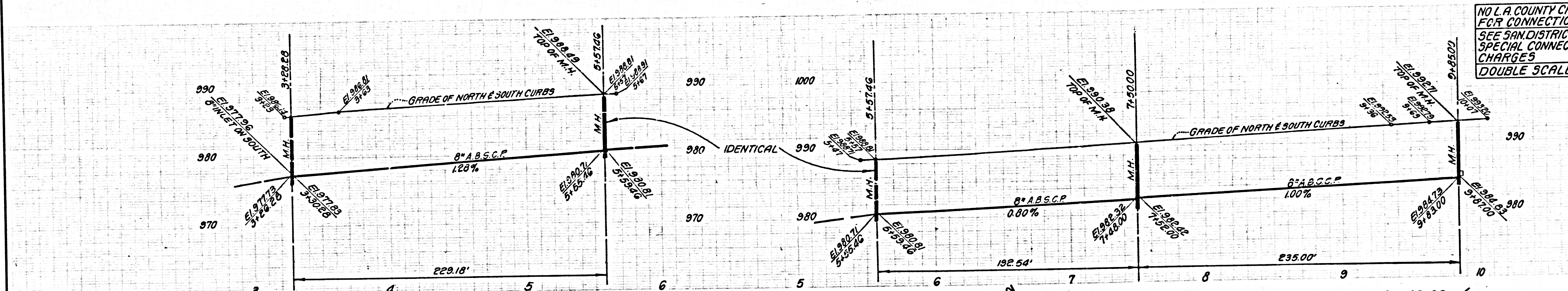
NO L.A. COUNTY CHARGE  
FOR CONNECTIONS  
SEE SAN. DISTRICTS FOR  
SPECIAL CONNECTION  
CHARGES  
DOUBLE SCALE

50844



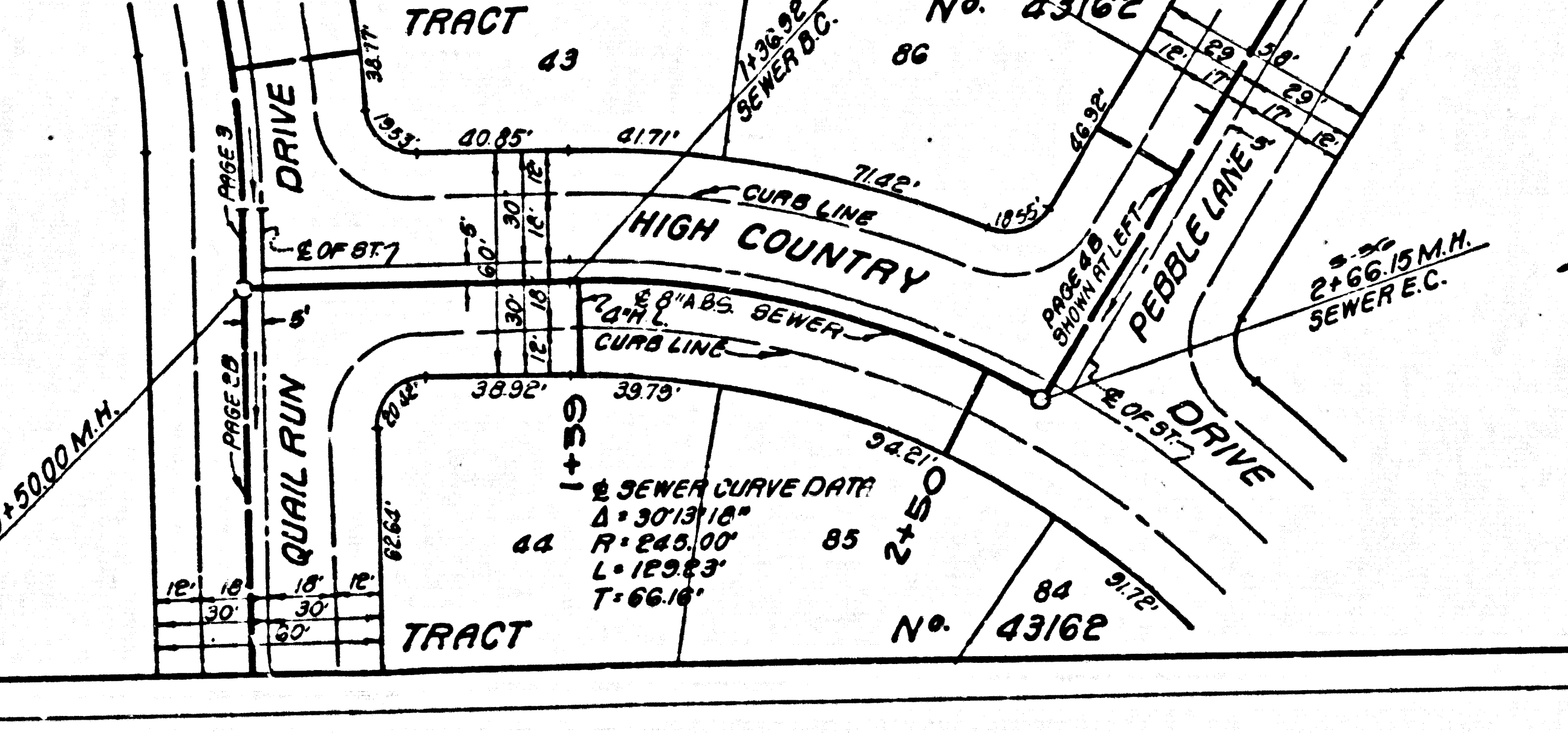
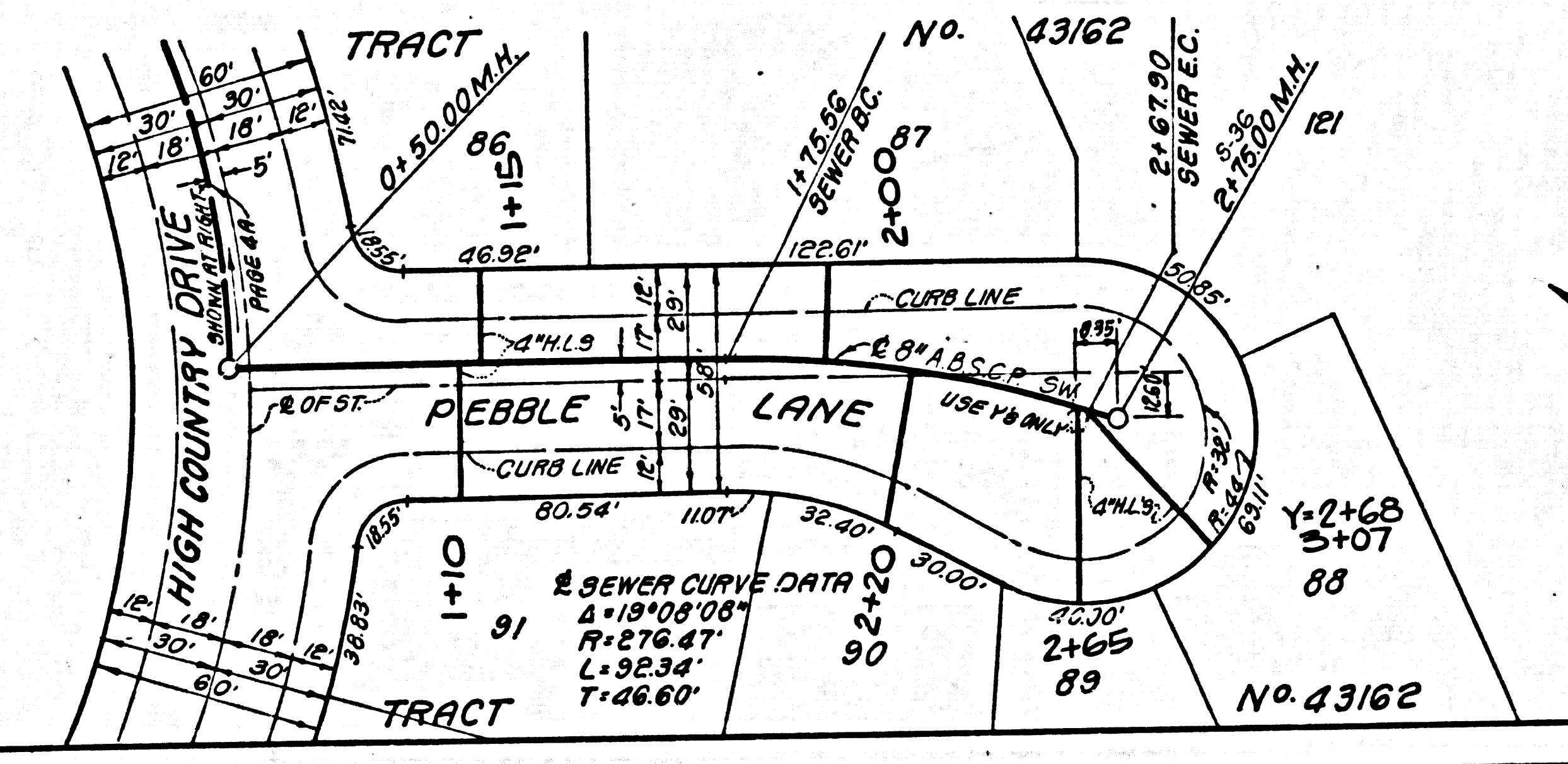
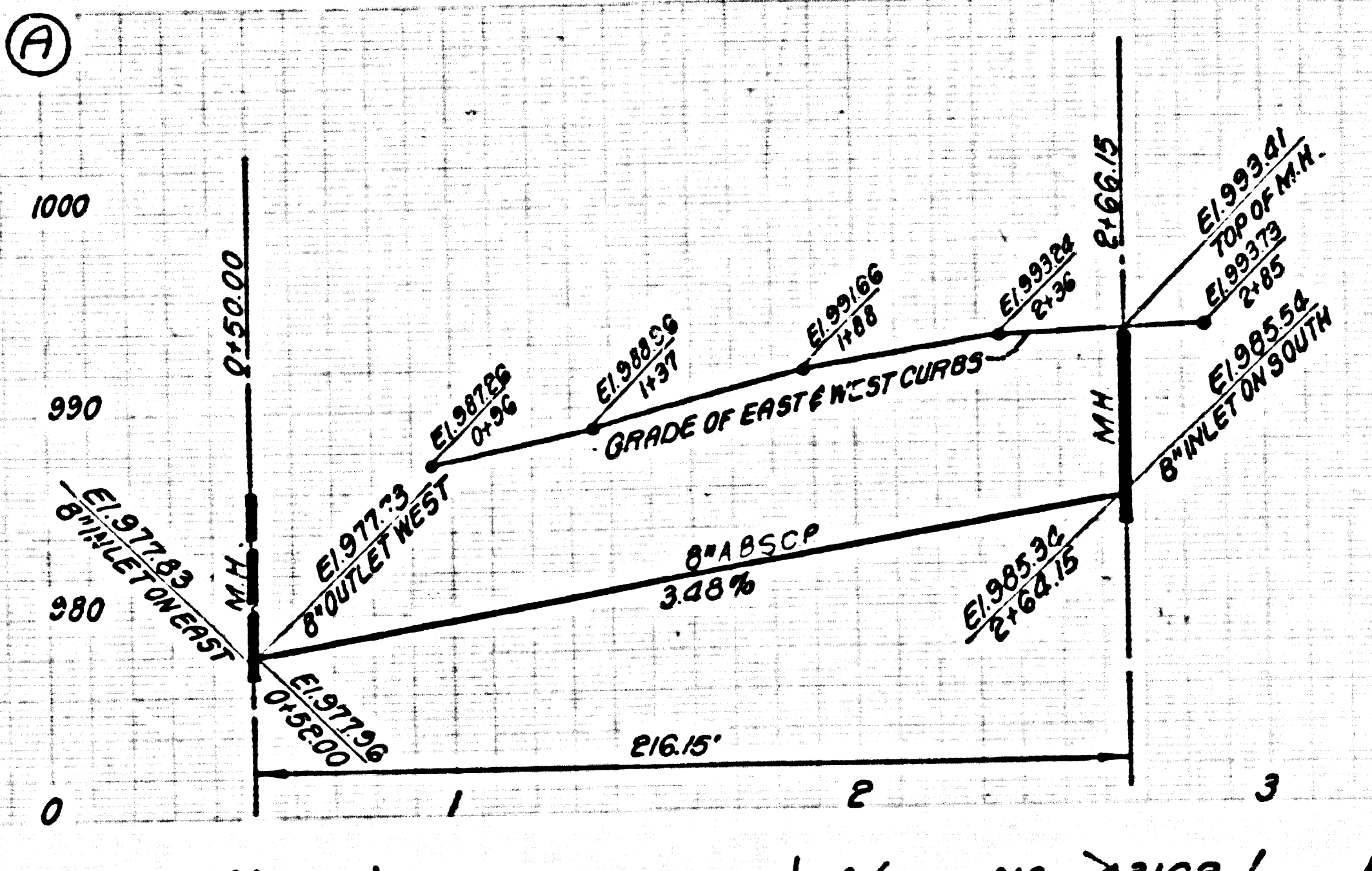
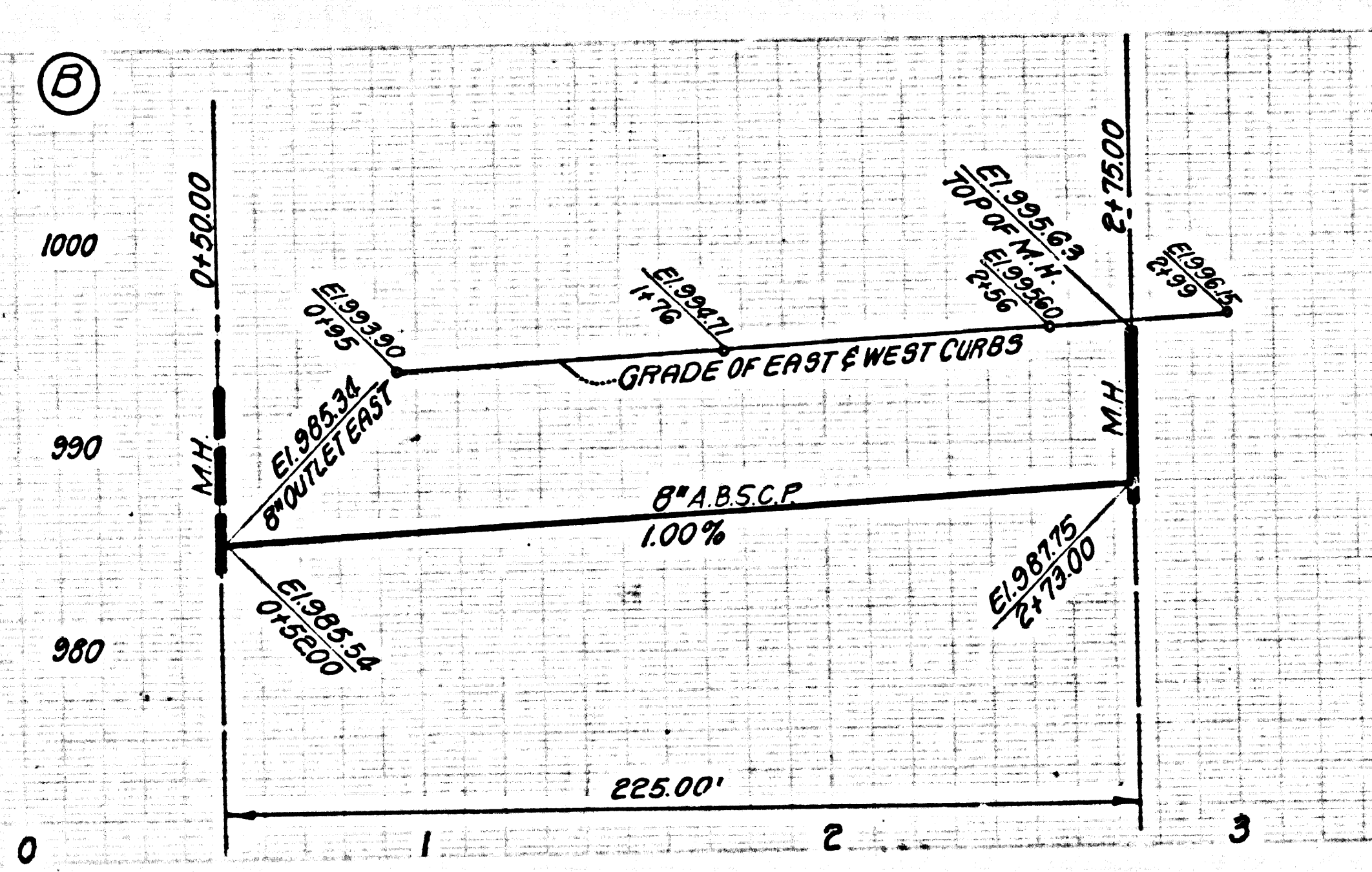
NO L.A. COUNTY CHARGE FOR CONNECTIONS  
SEE SAN DISTRICTS FOR SPECIAL CONNECTION CHARGES  
DOUBLE SCALE

50845



NO L.A. COUNTY CHARGE FOR CONNECTIONS  
SEE SAN DISTRICTS FOR SPECIAL CONNECTION CHARGES  
DOUBLE SCALE

50846

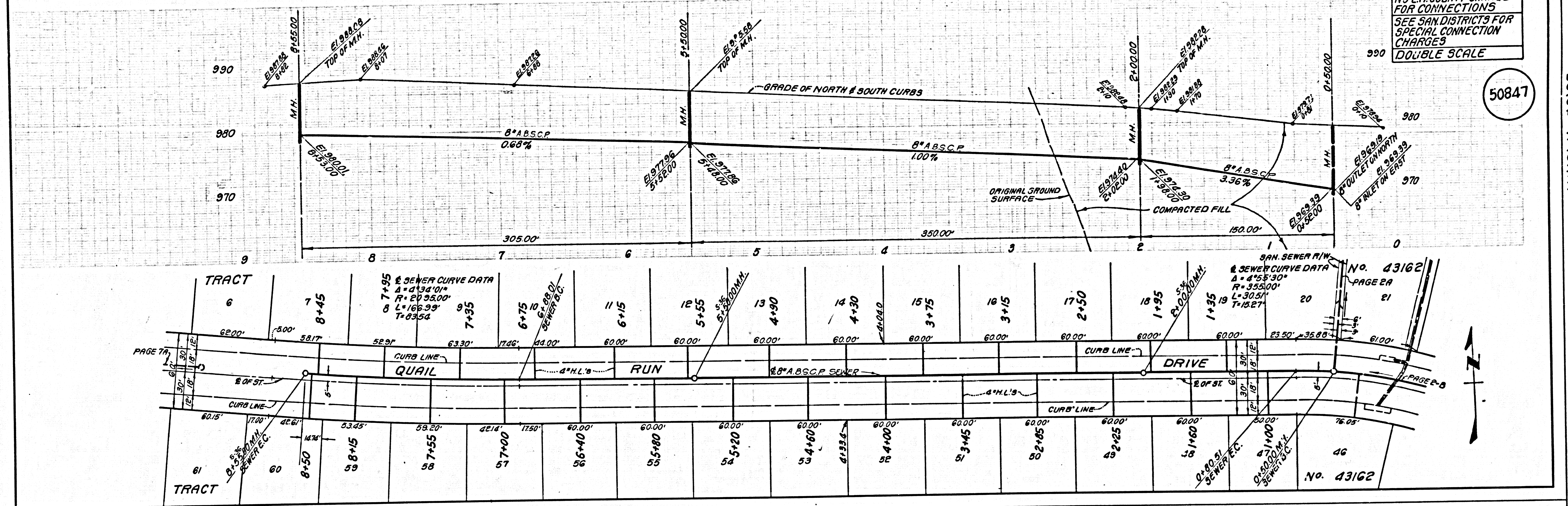


23501 39  
SAND DISTRICT



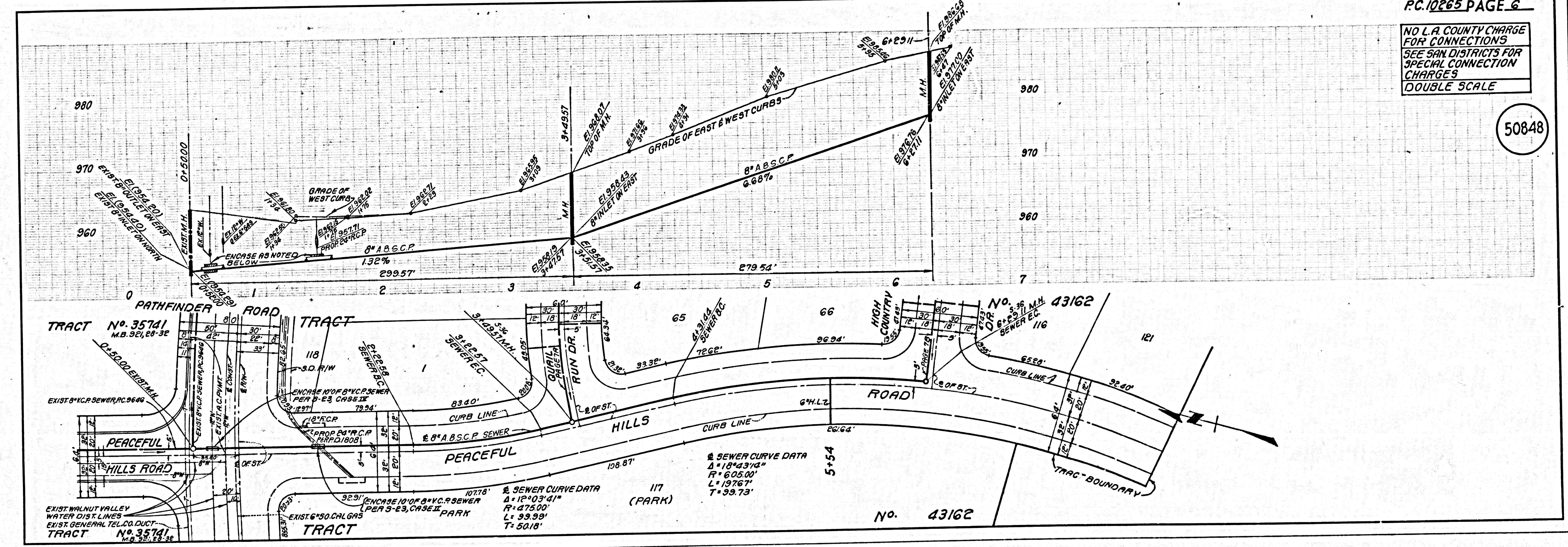
NO L.A. COUNTY CHARGE FOR CONNECTIONS  
SEE SAN DISTRICTS FOR SPECIAL CONNECTION CHARGES  
DOUBLE SCALE

50847



NO L.A. COUNTY CHARGE FOR CONNECTIONS  
SEE SAN DISTRICTS FOR SPECIAL CONNECTION CHARGES  
DOUBLE SCALE

50848

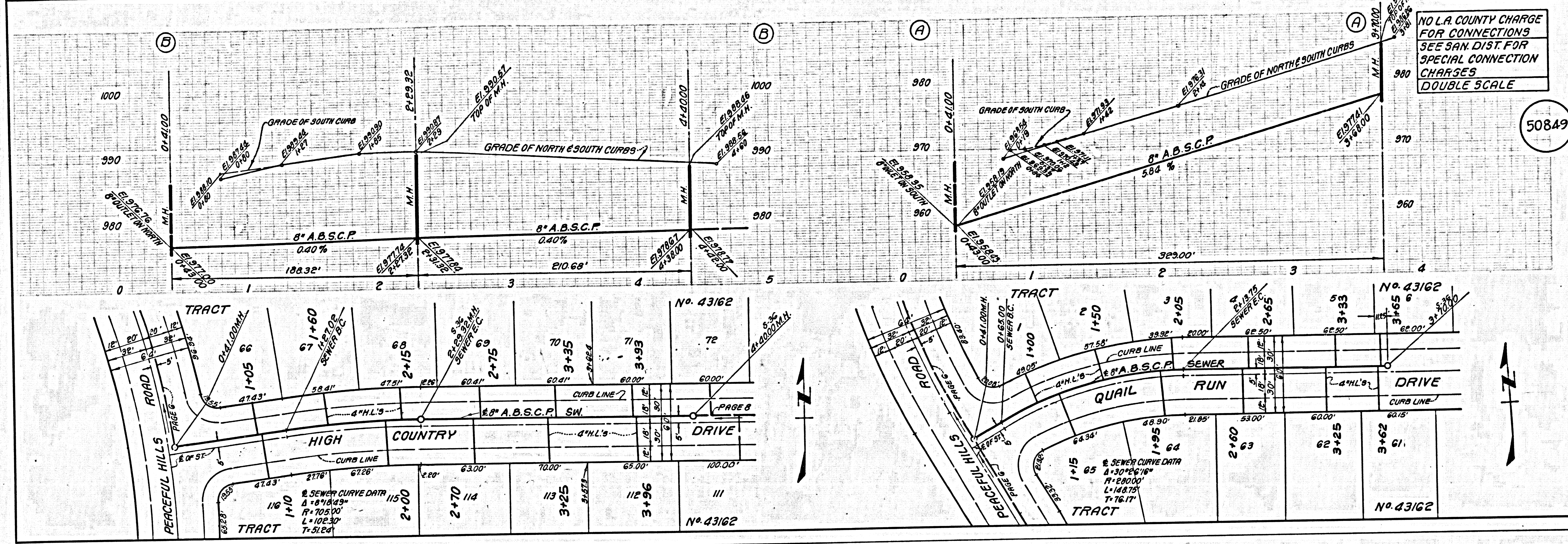


SHEET NO. 1387  
P.C. 10562



NO L.A. COUNTY CHARGE FOR CONNECTIONS SEE SAN. DIST. FOR SPECIAL CONNECTION CHARGES DOUBLE SCALE

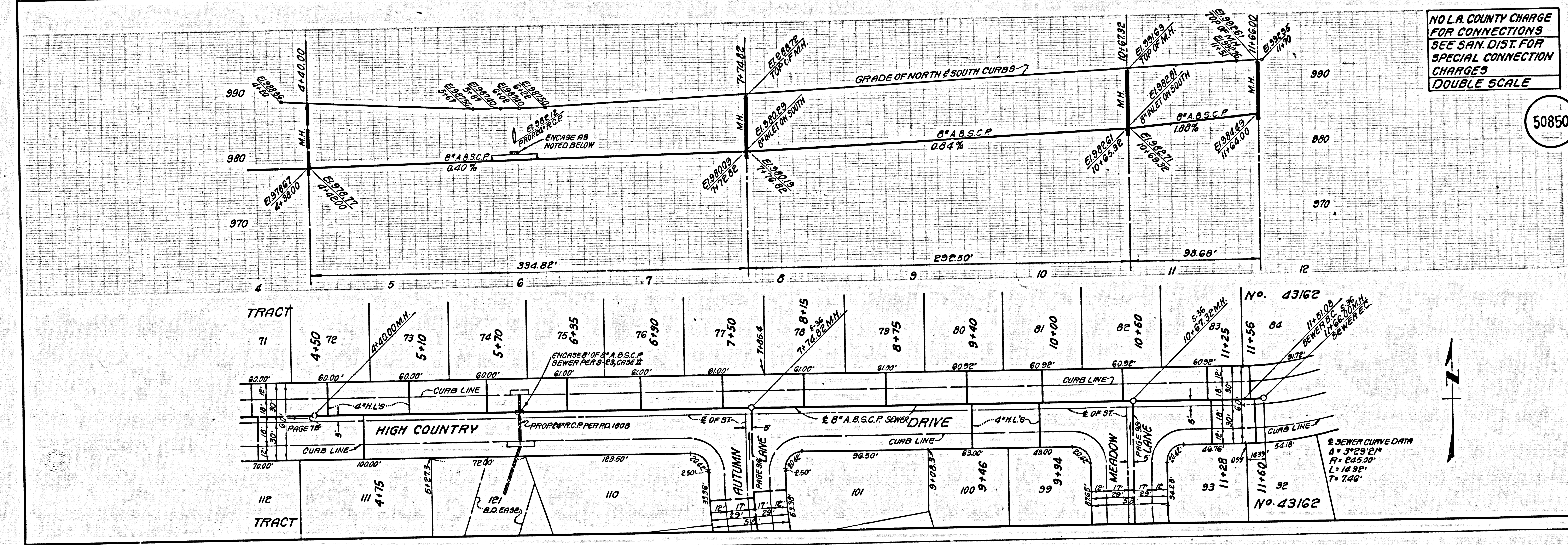
50849



23501.79  
SECTION TRACT

NO L.A. COUNTY CHARGE FOR CONNECTIONS SEE SAN. DIST. FOR SPECIAL CONNECTION CHARGES DOUBLE SCALE

50850



PREP

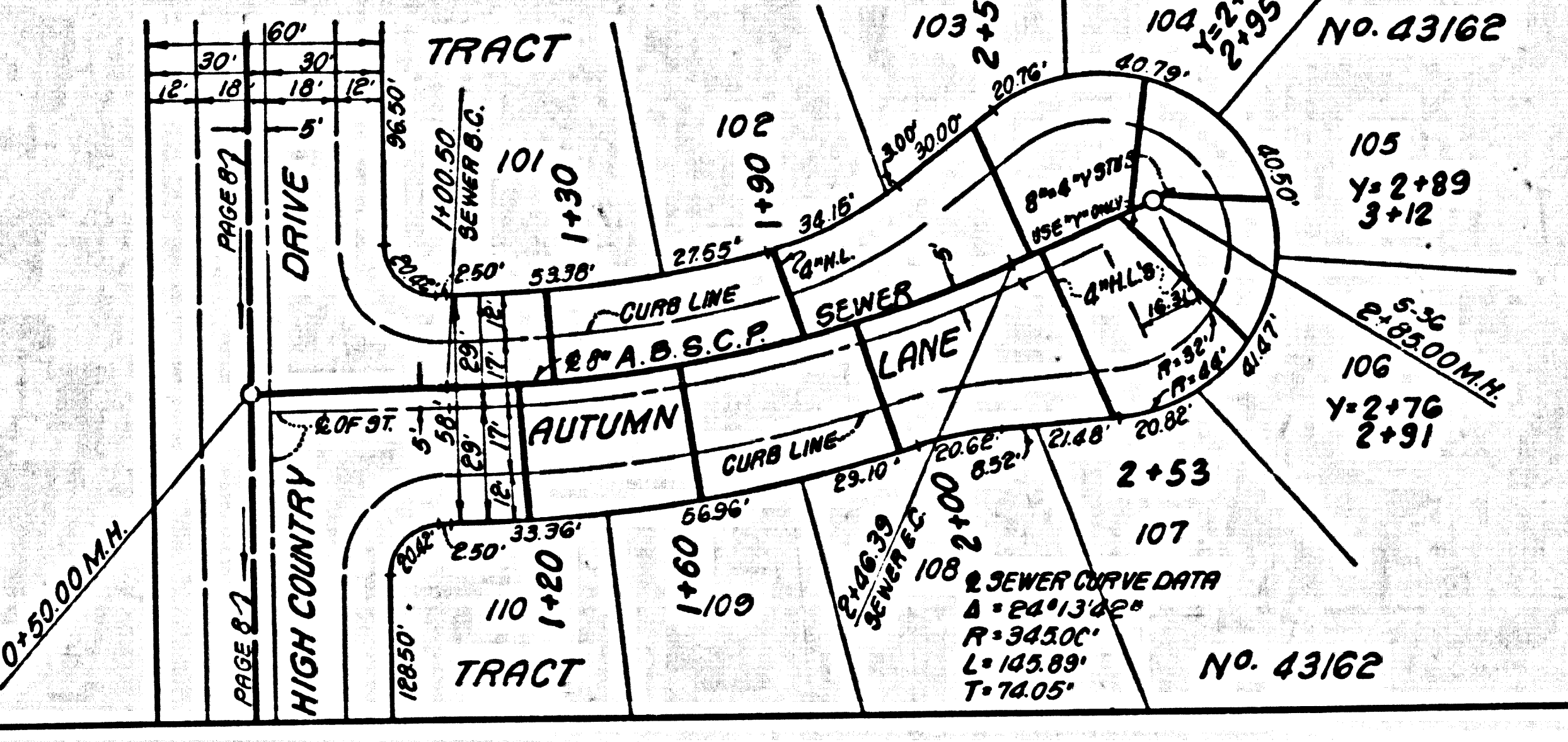
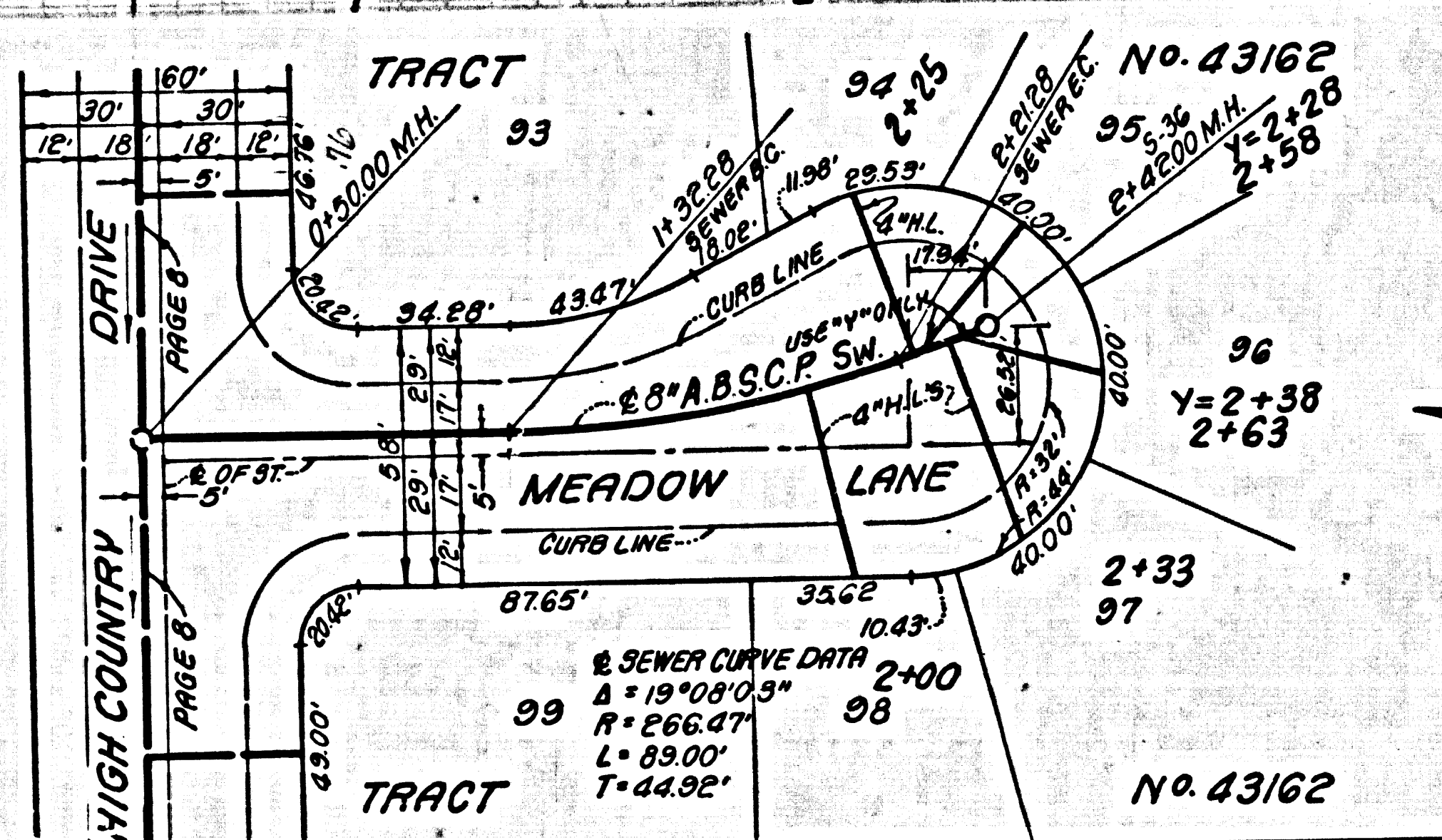
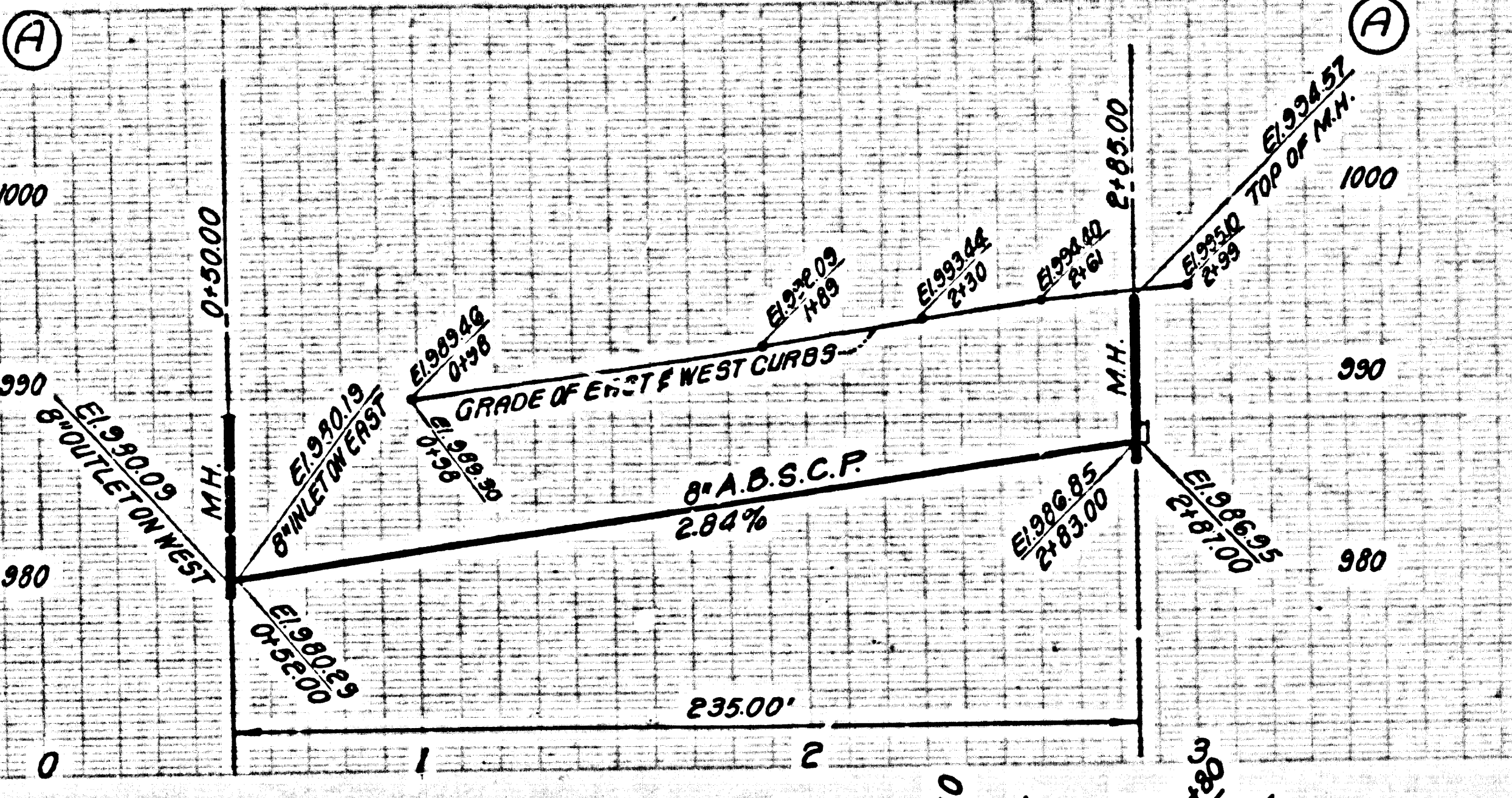
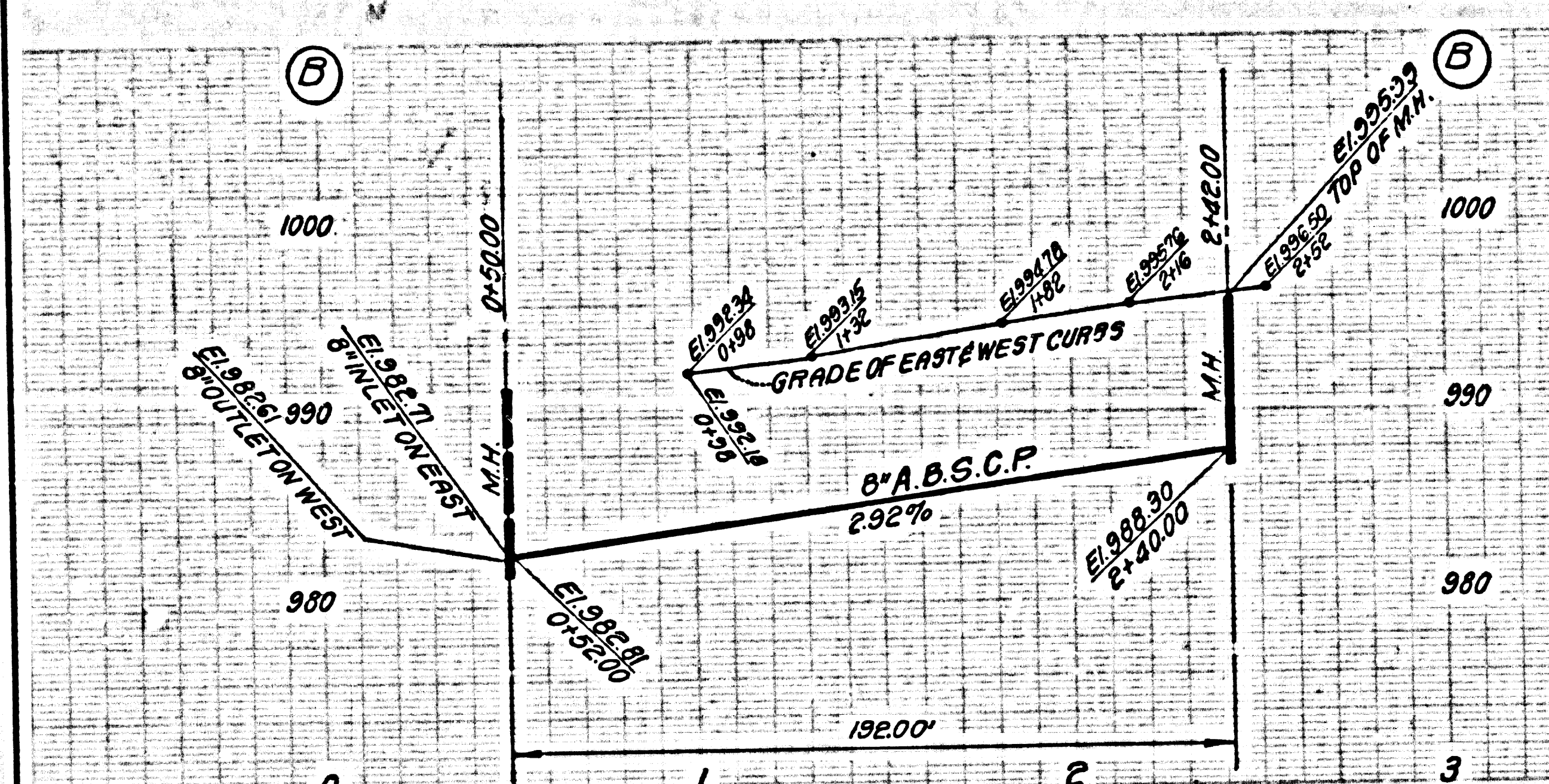
M3

M3



NO L.A. COUNTY CHARGE FOR CONNECTIONS  
SEE SAN DISTRICTS FOR SPECIAL CONNECTION CHARGES  
DOUBLE SCALE

50851



MS

MS

MS

SEWER TRACT