

B.M. CL 1534 FLEV. 1474.995
 CSRM MON W. HORN. CURV. B DO # 53
 26 FT W. CL. SECTOR. W/M. S. O. L. M.
 S. HORN. W. H. 18 FT. N.E. P.P. 1443570E
 N.W. (B.M. 801 - 108 1961)
 NEWHALL QUAD. 19 78

DOUBLE SCALE

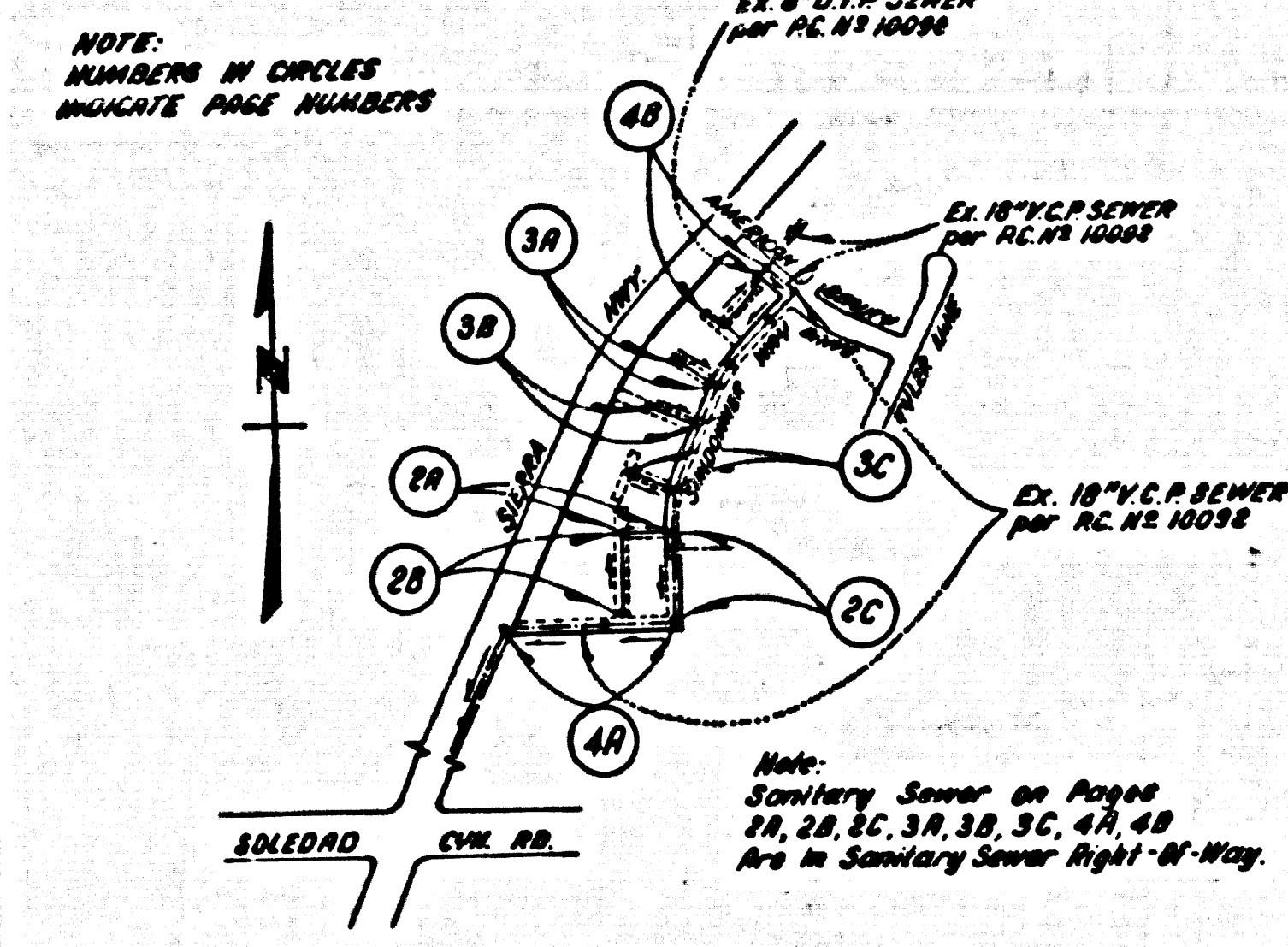
CONSTRUCTION NOTES (CONT)

16. V.P. BRANCHES ONLY MAY BE USED FOR CONNECTIONS TO MAIN LINE SEWER IF A.B.C.E.P. IS USED.
17. ALL JOINTS BETWEEN CAST IRON PIPE AND A.B.C.E.P. SHALL BE MADE WITH IMPROVED FITTINGS.
18. FULL COMPLIANCE WITH PART IV OF THE SPECIAL PROVISIONS IS REQUIRED FOR THE INSTALLATION OF A.B.C.E.P. PIPE AND A.B.C.E.P. SHALL HAVE LATERALS.
19. MANHOLE WATER STOP BANDS AND CLAMPS ARE REQUIRED FOR THE CONNECTION OF A.B.C.E.P. COMPOSITE PIPE TO MANHOLE STRUCTURES.
20. A.B.C.E.P. SHALL BE USED FOR WYE AND HOUSE LATERAL CONNECTIONS TO A.B.C.E.P. COMPOSITE MAIN LINE SEWER PIPE.
21. 8" DEFLECTOR COUPLERS SHALL BE USED TO ACCOMPLISH PRODS OF CURVATURE LESS THAN 750'.
22. A.B.C.E.P. COMPOSITE PIPE SHALL BE BEDDED IN CONFORMANCE WITH THE TABLE IN SECTION 8-21 OF PART III OF SPECIAL PROVISIONS.

NO CONNECTION FOR THE DISPOSAL OF INDUSTRIAL WASTES SHALL BE MADE TO SEWERS SHOWN ON THESE DRAWINGS UNTIL A PERMIT FOR INDUSTRIAL WASTEWATER DISCHARGE HAS BEEN ISSUED BY THE SANITATION DISTRICTS FOR SAID CONNECTION.

BEFORE BREAKING INTO OR CONSTRUCTION ON A COUNTY SANITATION DISTRICT SEWER AND PRIOR TO FINAL ACCEPTANCE OF THE PROJECT, SANITATION DISTRICT INSPECTOR SHALL BE NOTIFIED BY PHONE 818 - 962-8605 SO THAT REQUIRED INSPECTION CAN BE MADE.

ISSUE NO HOUSE CONNECTION PERMITS UNTIL OUTLET SEWER P.C. 10268 IS ACCEPTED FOR PUBLIC USE BY THE COUNTY OF LOS ANGELES.



INDEX MAP
 TRACT NO. 42036
 P.C. NO. 10268
 Scale: 1" = 600'

- ### GENERAL NOTES:
1. ELEVATIONS ARE IN FEET ABOVE U.S.C. & G.S. SEA LEVEL DATUM OF 1929.
 2. NO REVISIONS SHALL BE MADE IN THESE PLANS WITHOUT THE APPROVAL OF THE COUNTY ENGINEER.
 3. NO REPRESENTATIVE OF THE COUNTY ENGINEER WILL SURVEY OR LAY OUT ANY PORTION OF THE WORK.
 4. GRADES TO WHICH THIS IMPROVEMENT IS TO BE CONSTRUCTED ARE SHOWN ON PLANS AND PROFILES. GRADE POINTS FOR TOP OF CURBS, CENTER LINE OF STREETS, OR CENTER LINE OF ALLEYS ARE SHOWN BY CIRCLES OR TRIANGLES AT ALL POINTS BETWEEN DESIGNATED POINTS. THE GRADE SHALL BE ESTABLISHED SO AS TO CONFORM TO A STRAIGHT LINE BETWEEN SAID DESIGNATED POINTS.
 5. THE PRIVATE ENGINEER SHALL FURNISH THE COUNTY ENGINEER WITH GRADE SHEETS AND STATIONING FOR ALL HOUSE LATERALS AND "10" OR "12" BRANCHES AND SHALL PROVIDE STAKES ON THEM AT THE PROPER LOCATIONS WITH STATIONING IN ANY MANHOLE. ALL HOUSE LATERALS SHALL BE CONSTRUCTED IN A STRAIGHT ALIGNMENT AT RIGHT ANGLES FROM THE MAIN LINE SEWER EXCEPT AS SHOWN ON THE PLANS. HOUSE LATERALS FROM CHIMNEYS SHALL NOT HAVE AN ANGLE OF LESS THAN 45° WITH THE MAIN LINE SEWER AND CHANGE IN ALIGNMENT SHALL BE INDICATED IN WRITING BY THE PRIVATE ENGINEER.
 6. THE PRIVATE ENGINEER SHALL FURNISH THE HOUSE LATERAL DEPTH AT THE PROPERTY LINE BELOW THE TOP OF CURB ELEVATION FOR EACH HOUSE LATERAL ON THE GRADE SHEET.
 7. BEFORE WORK CAN BE STARTED, THE CONTRACTOR MUST OBTAIN A PERMIT TO EXCAVATE IN COUNTY STREETS FROM THE L.A. COUNTY ROAD DEPT., DISTRICT OFFICE NO. 8, 100 S. WILSON ST., LOS ANGELES, CALIF. TO COVER THE COST OF CONSTRUCTION INSPECTION AND RECORD PLANS.
 8. IF WORK IS TO BE DONE IN A STATE HIGHWAY, A PERMIT MUST BE OBTAINED FROM THE STATE OF CALIFORNIA, DIVISION OF HIGHWAYS, THE SOUTH SPRING STREET, LOS ANGELES, CALIFORNIA.
 9. APPROVAL OF THIS PLAN BY THE COUNTY OF LOS ANGELES DOES NOT CONSTITUTE A REPRESENTATION AS TO THE ACCURACY OF THE LOCATION OF OR THE EXISTENCE OR NON-EXISTENCE OF ANY UNDERGROUND UTILITY PIPE OR STRUCTURE WITHIN THE LIMITS OF THIS PROJECT. THIS NOTE APPLIES TO ALL PAGES.
 10. REFER TO SECTION 7.04.1 OF THE STANDARD SPECIFICATIONS, REGARDING "SAFETY ORDERS".
 11. PRIOR TO THE ISSUANCE OF THE REQUIRED SEWER CONSTRUCTION PERMIT, THE CONTRACTOR SHALL OBTAIN AND FILE WITH THE COUNTY ENGINEER COPIES OF A PERMIT TO EXCAVATE IN COUNTY STREETS FROM THE LOS ANGELES COUNTY ROAD DEPARTMENT, A PERMIT FOR EXCAVATION AND TRENCHES FROM THE STATE OF CALIFORNIA, DIVISION OF INDUSTRIAL SAFETY AND A CERTIFICATE OF WORKERS COMPENSATION INSURANCE WITH THE DEPARTMENT OF COUNTY ENGINEER, 300 SOUTH WILSON, LOS ANGELES, CALIFORNIA 90007, DATED AS THE CERTIFICATE HOLDER IS TO BE NOTIFIED 30 DAYS PRIOR TO CANCELLATION OF POLICY.

- ### CONSTRUCTION NOTES:
1. WORK SHALL BE CONSTRUCTED ACCORDING TO THE STANDARD SPECIFICATIONS FOR PUBLIC WORKS CONSTRUCTION (1986 EDITION) WITH 2006 SUPPLEMENT IF COUNTY ENGINEER SPECIAL PROVISIONS FOR THE CONSTRUCTION OF SANITARY SEWERS DATED 08/27/2018 AND SHALL BE PROSECUTED ONLY IN THE PRESENCE OF THE COUNTY ENGINEER.
 2. THE CONTRACTOR SHALL NOTIFY THE PROJECT MANAGEMENT DIVISION BY TELEPHONE 780-218, AT LEAST TWENTY-FOUR HOURS BEFORE STARTING ANY WORK UNDER THIS CONTRACT.
 3. HOUSE LATERALS TO BE CONSTRUCTED WITH INVERTS AT 18" MIN. LINE 8 FEET BELOW CURB GRADE EXCEPT AS NOTED.
 4. WYE OR TEE BRANCHES MAY BE USED FOR CONNECTIONS TO MAINLINE SEWERS EXCEPT AS NOTED.
 5. ALL STRUCTURES SHALL BE SIXER BRICK MANHOLES PER 8" OR PRECAST CONCRETE MANHOLES PER 8" EXCEPT AS NOTED.
 6. PROVIDE STAKES ON THE PROPERTY LINE OR PROPERTY LINES PRODUCED AT RIGHT ANGLES TO THE SEWER LINE AT THE CENTER LINE OF EACH MANHOLE.
 7. MANHOLE TOPS IN UNIMPROVED RIGHTS OF WAY TO BE SIX INCHES ABOVE FINISHED GRADE.
 8. VITRIFIED CLAY PIPE JOINTS SHALL BE TYPE "L" OR "B" PER STANDARD SPECIFICATIONS SECTION 308-2.
 9. IN A POWER POLE IS WITHIN THREE FEET OF THE SEWER, THE SEWER SHALL BE ENCASED PER 8" CASE 8, TWO FEET ON EACH SIDE FROM THE POINT OF INTERFERENCE.
 10. IF DURING THE COURSE OF CONSTRUCTION IT IS DETERMINED THAT THERE IS LESS THAN FOUR FEET OF COVER OVER THE TOP OF A MAIN LINE OR HOUSE LATERAL SEWER WHICH IS NOT INDICATED ON THE PLANS, THE PIPE SHALL BE ENCASED PER 8" CASE 8 UNLESS OTHERWISE APPROVED BY THE COUNTY ENGINEER.
 11. ALL JOINTS BETWEEN CAST IRON PIPE AND VITRIFIED CLAY PIPE SHALL BE MADE WITH A RUBBER SLEEVE JOINT, TYPE "C" OR "D" (WITH BLENDING IF NECESSARY) PER STANDARD SPECIFICATIONS SECTION 308-2.
 12. SEWERS TO BE TESTED FOR LEAKAGE PER SECTION 308-1.4 OF THE STANDARD SPECIFICATIONS AND SPECIAL PROVISIONS.
 13. RESURFACE ALL TRENCHES WITHIN PAVED AREAS TO MEET L.A. COUNTY ROAD DEPT. OR CALIFORNIA STATE HIGHWAY REQUIREMENTS IN ACCORDANCE WITH PERMITS.
 14. FULL COMPLIANCE WITH SECTION 308-1.5 OF THE SPECIAL PROVISIONS WILL BE REQUIRED FOR BACKFILL IN STREETS. CERTIFICATION OF BACKFILL COMPACTION AND SAND EQUIVALENTS BY A QUALIFIED, REGISTERED TESTING LABORATORY SHALL BE PROVIDED BY THE PERMITTEE PRIOR TO THE ISSUANCE OF A CERTIFICATE OF COMPLETION FOR THE BUILDING AND SAFETY DIVISION. (B) ALL BACKFILL AND EARTH REPAIRED SHALL BE COMPACTED TO A MINIMUM OF 90% OF MAXIMUM DENSITY PER A.S.T.M. 978 METHOD OF TEST OR BY AS SHOWN. ACCEPTABLE CERTIFICATION OF SUCH COMPACTION SHALL BE SUBMITTED TO THE PROJECT MANAGEMENT DIVISION.
 15. SPECIAL BACKFILL: IN EXISTING CONSTRUCTION (A) BACKFILL TRENCHES AND REPLACE OTHER EARTH SO AS TO ACHIEVE THE NATURAL OR FINISHED GRADES AND SLOPES SHOWN ON THE GRADING PLAN APPROVED FOR THIS DEVELOPMENT BY THE BUILDING AND SAFETY DIVISION. (B) ALL BACKFILL AND EARTH REPAIRED SHALL BE COMPACTED TO A MINIMUM OF 90% OF MAXIMUM DENSITY PER A.S.T.M. 978 METHOD OF TEST OR BY AS SHOWN. ACCEPTABLE CERTIFICATION OF SUCH COMPACTION SHALL BE SUBMITTED TO THE PROJECT MANAGEMENT DIVISION.

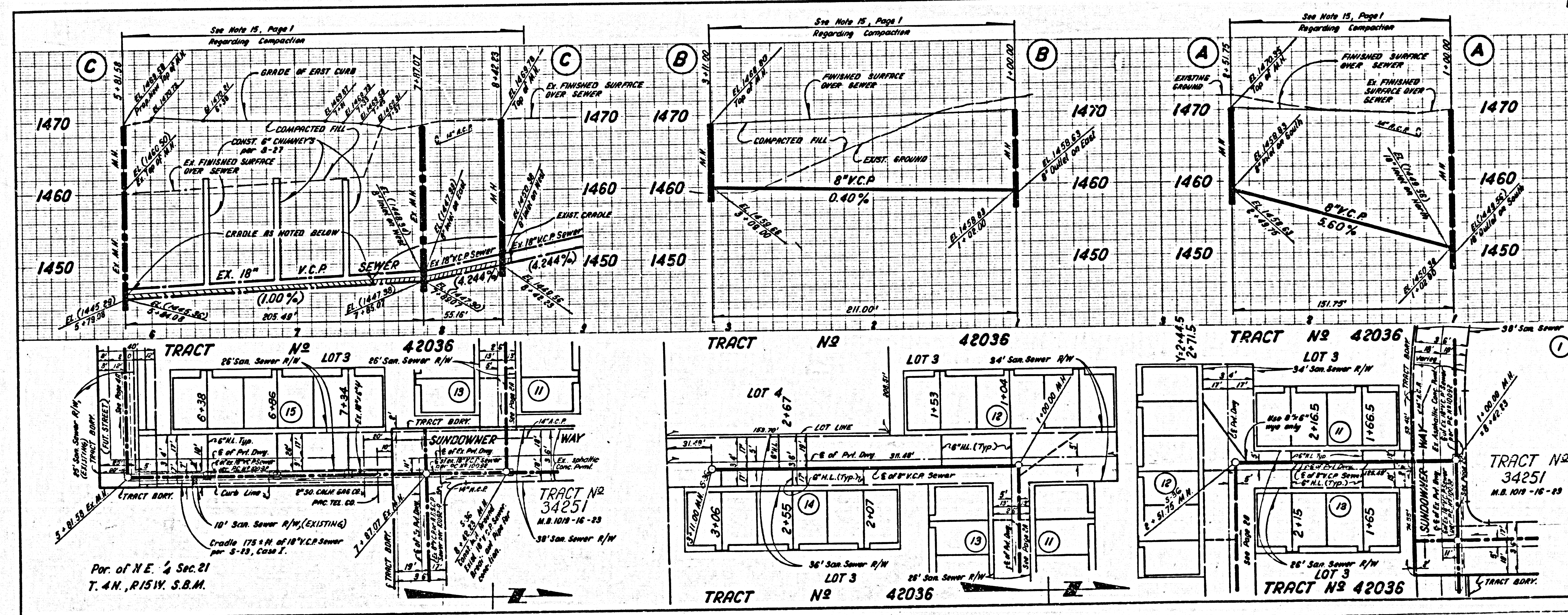
TO BE CONSTRUCTED BY:
TRACT NO. 42036
 PRIVATE CONTRACT NO. 10268

A-60
 2 SHEETS, 4 PAGES
 SCALE: VERT. 1" = 4'
 HORIZ. 1" = 40'
 JUNE, 1964
 PREPARED IN THE OFFICES OF
ENGINEERING SERVICE CORPORATION
 6015 W. CENTRAL EXPRESSWAY, LOS ANGELES, CALIF. 90048
 BY: *J.R. Newville*
 REG. C.E. No. 13095

THE FOLLOWING LATEST REVISED STANDARD PLANS ON FILE IN THE OFFICE OF THE COUNTY ENGINEER SHALL APPLY IN THE CONSTRUCTION OF THIS PROJECT.

LEGEND	8-1
MINIMUM PUBLIC SAFETY REQUIREMENTS	8-2
BRICK MANHOLE	8-3
STANDARD MANHOLE STOP	8-17
BEDDING FOR SEWER PIPE	8-21
CHIMNEY AND ENCASING	8-24
WYE OR TEE BRANCH	8-25
ALLOWABLE TRENCH WIDTHS	8-33
LOCKING MANHOLE FRAME AND COVER	8-34
NON-REINFORCED PRECAST CONCRETE MANHOLE	8-36
GRAVELLY SAND FOR SAND	8-37
BEDDING FOR ABS OR PVC SEWER PIPE	8-38A

COUNTY OF LOS ANGELES, CALIFORNIA
 STEPHEN J. KOONCE, COUNTY ENGINEER
 CHARLES B. CARRY, CHIEF ENGINEER
 APPROVED: *Thomas V. Schibus* 7-27-64, APPROVED: *Charles B. Carry* 7-27-64
 CHECKED: *Vincent L. Kern* 7-27-64
 REG. C.E. NO. 27067
 SANTA CLARITA VALLEY M.D.G. DIST. 87



DOUBLE SCALE
 NO L.A. CO. CHARGE
 FOR CONNECTIONS
 SEE SAN. DIST. FOR
 SPECIAL CONNECTION
 CHARGES

NUMBER IN CIRCLES
 INDICATE BLDG. NUMBERS

