

B.M. C.G. 1610 ELEV. 532.658
 F.D.B.M. TAG N. CB 1 FT. E. SCR @ NE
 COR. LOS ALTOS DR. & VALLECITO
 DRIVE 20 FT. N. 66 FT. E. & INT.
 WHITTIER QUAD. 19.82

DOUBLE SCALE

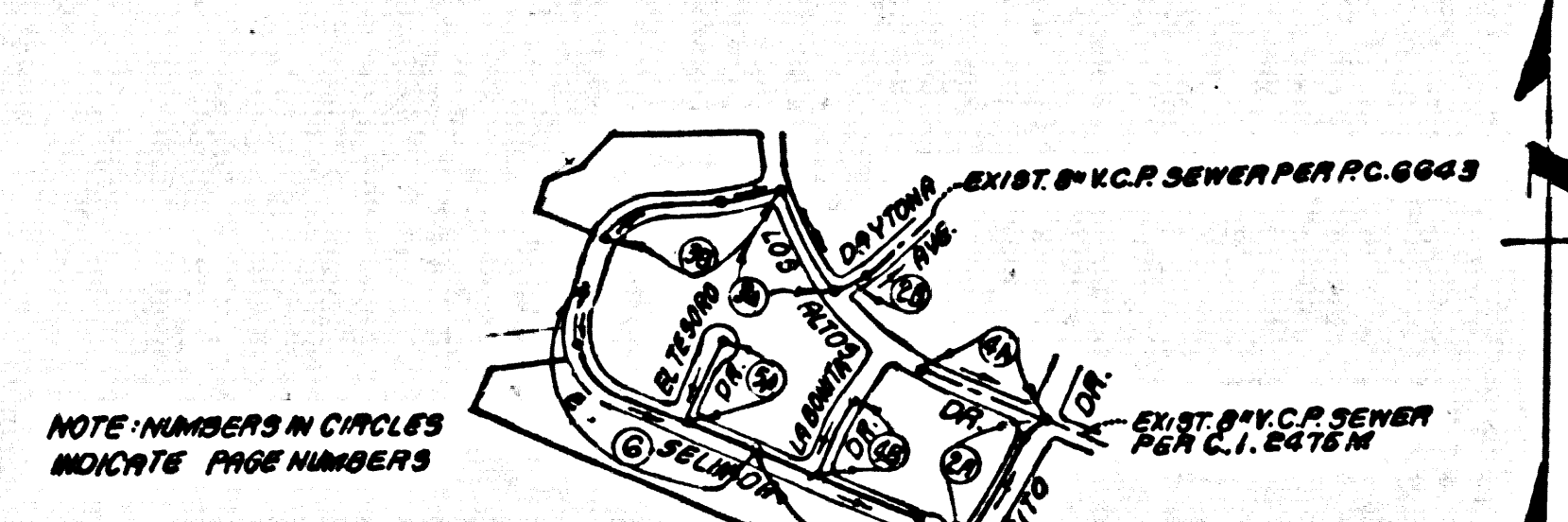
GENERAL NOTES: CONT.
 1. ALL REFERENCES ON THIS PLAN TO THE COUNTY ENGINEER, THE ROAD DEPARTMENT, OR THE FLOOD CONTROL DISTRICT SHALL APPLY TO THOSE APPROPRIATE SECTIONS OF THE DEPARTMENT OF PUBLIC WORKS.

NO CONNECTION FOR THE DISPOSAL OF INDUSTRIAL WASTES SHALL BE MADE TO SEWERS SHOWN ON THESE DRAWINGS UNTIL A PERMIT FOR INDUSTRIAL WASTEWATER DISCHARGE HAS BEEN ISSUED BY THE SANITATION DISTRICTS FOR SAID CONNECTION.

BEFORE BREAKING INTO OR CONSTRUCTION ON A COUNTY SANITATION DISTRICT SEWER AND PRIOR TO FINAL ACCEPTANCE OF THE PROJECT, SANITATION DISTRICT INSPECTOR SHALL BE NOTIFIED BY PHONE 818 - 962-8605 SO THAT REQUIRED INSPECTION CAN BE MADE.

NO. 1
 REVISION: 6-13-85 ADDED 45" Ø SEWER L.M.H. AND A 4" H.L. ON EAST, PAGE 6
 APPROVED: *Sandy G. Hall* 6-31-85
 DEPT. OF PUBLIC WORKS DATE

NO. 2
 REVISION: 7-20-87 DELATED 4" Ø 31" Ø SEWER A MANHOLE AND 4" H.L.'S AND ADDED A 4" H.L. ON NORTH, PAGE 6
 APPROVED: *Sandy G. Hall* 8-18-87
 DEPT. OF PUBLIC WORKS DATE



INDEX MAP
 TRACT No. 43680
 P.C. No. 10278
 SCALE: 1"=80'

THE EXISTENCE AND LOCATION OF ANY UNDERGROUND PIPES OR STRUCTURES SHOWN ON THESE PLANS ARE OBTAINED BY A SEARCH OF THE AVAILABLE RECORDS. TO THE BEST OF MY KNOWLEDGE THERE ARE NO EXISTING UTILITIES EXCEPT AS SHOWN ON THESE PLANS. THE CONTRACTOR IS REQUIRED TO TAKE DUE PRECAUTIONARY MEASURES TO PROTECT THE UTILITIES SHOWN AND ANY OTHER LINES NOT OF RECORD OR NOT SHOWN ON THESE PLANS.
Judith J. Jaramilla
 R.C.E. 17532

GENERAL NOTES:

- ELEVATIONS ARE IN FEET ABOVE U.S.C. & G.S. SEA LEVEL DATUM OF 1988.
- NO REVISIONS SHALL BE MADE IN THESE PLANS WITHOUT THE APPROVAL OF THE COUNTY ENGINEER.
- NO REPRESENTATIVE OF THE COUNTY ENGINEER WILL SURVEY OR LAY OUT ANY PORTION OF THE WORK.
- GRADES TO WHICH THIS IMPROVEMENT IS TO BE CONSTRUCTED ARE SHOWN ON PLANS AND PROFILES. GRADE POINTS FOR TOP OF CURBS, CENTER LINE OF STREETS, OR CENTER LINE OF ALLEYS ARE SHOWN BY CIRCLES ON PROFILES AT ALL POINTS BETWEEN DESIGNATED POINTS. THE GRADE SHALL BE ESTABLISHED SO AS TO CONFORM TO A STRAIGHT LINE DRAWN BETWEEN SAID DESIGNATED POINTS.
- THE PRIVATE ENGINEER SHALL FURNISH THE COUNTY ENGINEER WITH GRADE SHEETS AND STATIONING FOR ALL HOUSE LATERALS AND "0" H.L. BRANCHES AND SHALL PROVIDE STAKES FOR THEM AT THEIR PROPER LOCATIONS WITH STATIONING PLAINLY MARKED. ALL HOUSE LATERALS SHALL BE CONSTRUCTED IN A 3" MAINT. ALIGNMENT AT RIGHT ANGLES FROM THE MAIN LINE SEWER EXCEPT AS SHOWN ON THE PLANS. HOUSE LATERALS FROM CHIMNEYS SHALL NOT HAVE AN ANGLE OF LESS THAN 45° WITH THE MAIN LINE SEWER. ANY CHANGE IN ALIGNMENT SHALL BE REQUESTED IN WRITING BY THE PRIVATE ENGINEER.
- THE PRIVATE ENGINEER SHALL FURNISH THE HOUSE LATERAL DEPTH AT THE PROPERTY LINE BELOW THE TOP OF CURB ELEVATION FOR EACH HOUSE LATERAL ON THE GRADE SHEET.
- BEFORE WORK CAN BE STARTED, THE CONTRACTOR MUST OBTAIN A PERMIT TO EXCAVATE IN COUNTY STREETS FROM THE L.A. COUNTY ROAD DEPT. DISTRICT OFFICE NO. 1 AND PAY A FEE TO THE COUNTY ENGINEER, 800 S. VERMONT AVENUE, LOS ANGELES, CA 90026, TO COVER THE COST OF CONSTRUCTION INSPECTION AND RECORD PLANS.
- IF WORK IS TO BE DONE IN A STATE HIGHWAY A PERMIT MUST BE OBTAINED FROM THE STATE OF CALIFORNIA, DIVISION OF HIGHWAYS, 120 SOUTH SPRING STREET, LOS ANGELES, CALIFORNIA.
- APPROVAL OF THIS PLAN BY THE COUNTY OF LOS ANGELES DOES NOT CONSTITUTE A REPRESENTATION AS TO THE ACCURACY OF THE LOCATION OF OR THE EXISTENCE OR NON-EXISTENCE OF ANY UNDERGROUND UTILITY PIPE OR STRUCTURE WITHIN THE LIMITS OF THIS PROJECT. THIS NOTE APPLIES TO ALL PAGES.
- REFER TO SECTION 7.10.41 OF THE STANDARD SPECIFICATIONS, REGARDING SAFETY ORDERS.
- PRIOR TO THE ISSUANCE OF THE REQUIRED SEWER CONSTRUCTION PERMIT, THE CONTRACTOR SHALL OBTAIN AND FILE WITH THE COUNTY ENGINEER COPIES OF A PERMIT TO EXCAVATE IN COUNTY STREETS FROM THE LOS ANGELES COUNTY ROAD DEPARTMENT, COUNTY ENGINEER OFFICE, 800 S. VERMONT AVENUE, LOS ANGELES, CALIFORNIA, AND A CERTIFICATE OF PERMIT FOR EXCAVATIONS AND TRENCHES FROM THE STATE OF CALIFORNIA, DIVISION OF INDUSTRIAL SAFETY AND CERTIFICATE OF WORKERS COMPENSATION INSURANCE WITH THE DEPARTMENT OF COUNTY ENGINEER, 800 SOUTH VERMONT, RM. 408, LOS ANGELES, CALIFORNIA 90026, NAMED AS "THE CERTIFICATE HOLDER TO BE NOTIFIED 30 DAYS PRIOR TO CANCELLATION OF POLICY."

CONSTRUCTION NOTES:

- WORK SHALL BE CONSTRUCTED ACCORDING TO THE STANDARD SPECIFICATIONS FOR PUBLIC WORKS CONSTRUCTION (1988 EDITION WITH SUPPLEMENTS) AND COUNTY ENGINEER SPECIAL PROVISIONS FOR THE CONSTRUCTION OF SANITARY SEWERS DATED SEPTEMBER 21, 1978 AND SHALL BE PROSECUTED ONLY IN THE PRESENCE OF THE COUNTY ENGINEER.
- THE CONTRACTOR SHALL NOTIFY THE ENVIRONMENTAL SERVICES DIVISION BY TELEPHONE 728-7186 AT LEAST TWENTY-FOUR HOURS BEFORE STARTING ANY WORK UNDER THIS CONTRACT.
- HOUSE LATERALS TO BE CONSTRUCTED WITH INVERTS AT PROPERTY LINE 8 FEET BELOW CURB GRADE EXCEPT AS NOTED.
- WYE OR TEE BRANCHES MAY BE USED FOR CONNECTIONS TO MAINLINE SEWERS EXCEPT AS NOTED.
- ALL STRUCTURES SHALL BE EITHER BRICK MANHOLES PER S-3 OR PRECAST CONCRETE MANHOLES PER S-28, EXCEPT AS NOTED.
- PROVIDE STAKES ON THE PROPERTY LINE OR PROPERTY LINES PRODUCED AT RIGHT ANGLES TO THE SEWER LINE AT THE CENTER LINE OF EACH MANHOLE.
- MANHOLE TOPS IN UNIMPROVED RIGHTS OF WAY TO BE 36 INCHES ABOVE FINISHED GRADE.
- WITHEDED CLAY PIPE JOINTS SHALL BE TYPE "D" OR "B" PER STANDARD SPECIFICATIONS SECTION 200-2.
- IF A POWER POLE IS WITHIN THREE FEET OF THE SEWER, THE SEWER SHALL BE ENCASED PER S-25, CASE B, TWO FEET ON EACH SIDE FROM THE POINT OF INTERFERENCE.
- IF DURING THE COURSE OF CONSTRUCTION IT IS DETERMINED THAT THERE IS LESS THAN FOUR FEET OF COVER OVER THE TOP OF A MAIN LINE OR HOUSE LATERAL SEWER WHICH IS NOT INDICATED ON THE PLANS, THE PIPE SHALL BE ENCASED PER S-25, CASE B UNLESS OTHERWISE APPROVED BY THE COUNTY ENGINEER.
- ALL JOINTS BETWEEN CAST IRON PIPE AND WITHEDED CLAY PIPE SHALL BE MADE WITH A RUBBER JOINT, JOINT TYPE "C" OR "D" (WITH BUSHING IF NECESSARY) PER STANDARD SPECIFICATIONS SECTION 200-3.
- SEWERS TO BE TESTED FOR LEAKAGE PER SECTION 200-14 OF THE STANDARD SPECIFICATIONS AND SPECIAL PROVISIONS.
- REINFORCE ALL TRENCHES WITHIN PAVED AREAS TO MEET L.A. COUNTY ROAD DEPT. OR CALIFORNIA STATE HIGHWAY REQUIREMENTS IN ACCORDANCE WITH PERMITS.
- FULL COMPLIANCE WITH SECTION 200-13.5 OF THE SPECIAL PROVISIONS WILL BE REQUIRED FOR BACKFILL IN STREETS. CERTIFICATION OF BACKFILL COMPACTION AND SAND EQUIVALENTS BY A QUALIFIED, REGISTERED TESTING LABORATORY SHALL BE PROVIDED BY THE PERMITTEE PRIOR TO THE ISSUANCE OF A CERTIFICATE OF PARTIAL ACCEPTANCE.
- SPECIAL BACKFILL IN EASEMENT CONSTRUCTION (A) BACKFILL TRENCH AND REPLACE OTHER EARTH SO AS TO ACHIEVE THE NATURAL OR FINISHED GRADES AND SLOPES SHOWN ON THE GRADING PLAN APPROVED FOR THE DEVELOPMENT BY THE BUILDING AND SAFETY DIVISION (B) ALL BACKFILL AND EARTH REPLACED SHALL BE COMPACTED TO A MINIMUM OF 90% OF MAXIMUM DENSITY PER A.S.T.M. METHOD OF TEST D1557 AS MODIFIED. ACCEPTABLE CERTIFICATION OF SUCH COMPACTION SHALL BE SUBMITTED TO THE ENVIRONMENTAL SERVICES DIVISION.

SANITARY SEWERS

TO BE CONSTRUCTED IN
TRACT No. 43680

PRIVATE CONTRACT NO. 10278

INDEX - U113
 W.S. 37-D, E, S
 3 SHEETS; 6 PAGES

SCALE: VERT. 1"=8'
 HORIZ. 1"=80' MAY, 1984

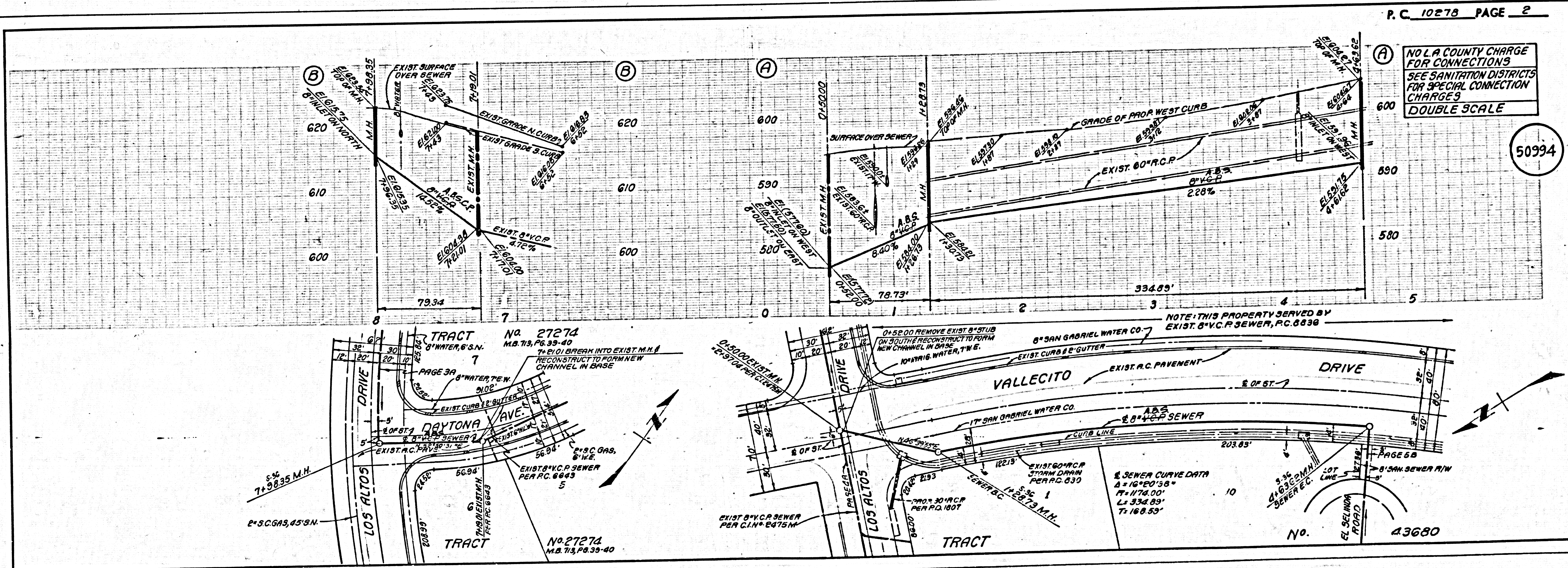
PREPARED IN THE OFFICES OF
EL PEARSON & ASSOCIATES
 1555 W. REDONDO BEACH BLVD., GARDENA, CALIF. 90247
 BY: *Judith J. Jaramilla*
 REG. C.E. No. 17532

THE FOLLOWING LATEST METER STANDARD PLANS ON FILE IN THE OFFICE OF THE COUNTY ENGINEER SHALL APPLY IN THE CONSTRUCTION OF THIS PROJECT:

| | |
|--|------|
| 100000 | 5.1 |
| MINIMUM HOUSE SANITARY REQUIREMENTS | 5.2 |
| BRICK MANHOLE | 5.3 |
| STANDARD MANHOLE STEP | 5.4 |
| MODIFY FOR SEWER PIPE | 5.5 |
| CHANGING AND REVERSING | 5.6 |
| WYE OR TEE BRANCH | 5.7 |
| ALLOWABLE TRENCH WIDTHS | 5.8 |
| LOADING MANHOLE FRAME AND COVER | 5.9 |
| NON-VENTHATED PRECAST CONCRETE MANHOLE | 5.10 |
| STANDARD WYE TO EXISTING BRICK OR PRECAST CONCRETE MANHOLE | 5.11 |
| SPECIAL HOUSE LATERALS | 5.12 |
| CHIMNEY PIPE AND CHASE | 5.13 |

50993

COUNTY OF LOS ANGELES, CALIFORNIA
 THOMAS A. TIDE MANSON
 DIRECTOR OF PUBLIC WORKS
 CHARLES W. CARRIVY, CHIEF ENGINEER
 800 S. VERMONT AVENUE
 APPROVED: *Bruce Hooper* 5-21-85
 DATE
 APPROVED: *Randy Fuller* 5-27-85
 DATE
 CHECKED: *Edna Allen* 5-21-85
 DATE
 REG. C.E. No. 16841
 LA PUENTE BLDG. DIST. 200

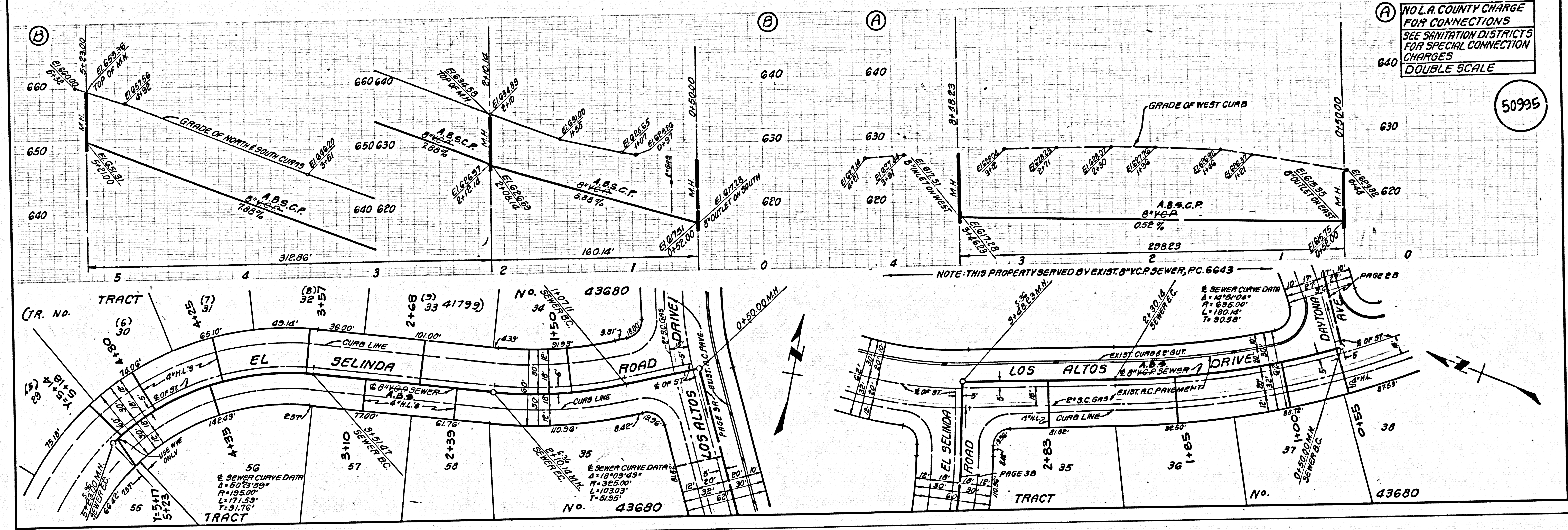


NO L.A. COUNTY CHARGE FOR CONNECTIONS
 SEE SANITATION DISTRICTS FOR SPECIAL CONNECTION CHARGES
DOUBLE SCALE

50994

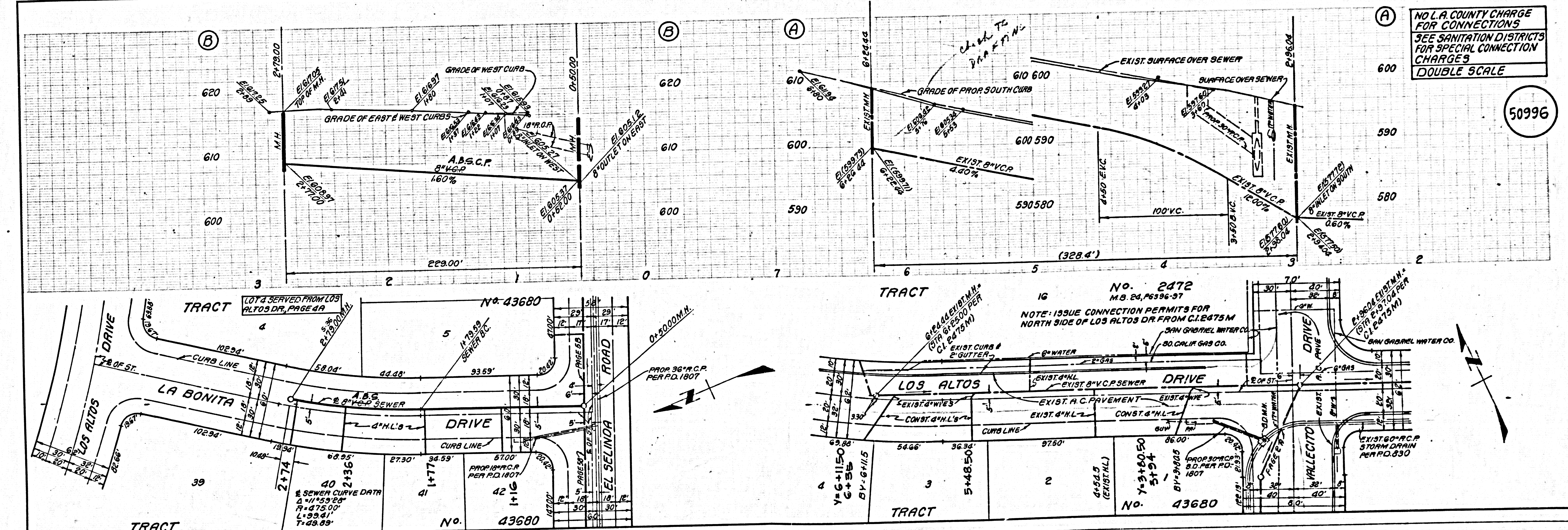
(A) NO L.A. COUNTY CHARGE FOR CONNECTIONS SEE SANITATION DISTRICTS FOR SPECIAL CONNECTION CHARGES DOUBLE SCALE

50995



(A) NO L.A. COUNTY CHARGE FOR CONNECTIONS SEE SANITATION DISTRICTS FOR SPECIAL CONNECTION CHARGES DOUBLE SCALE

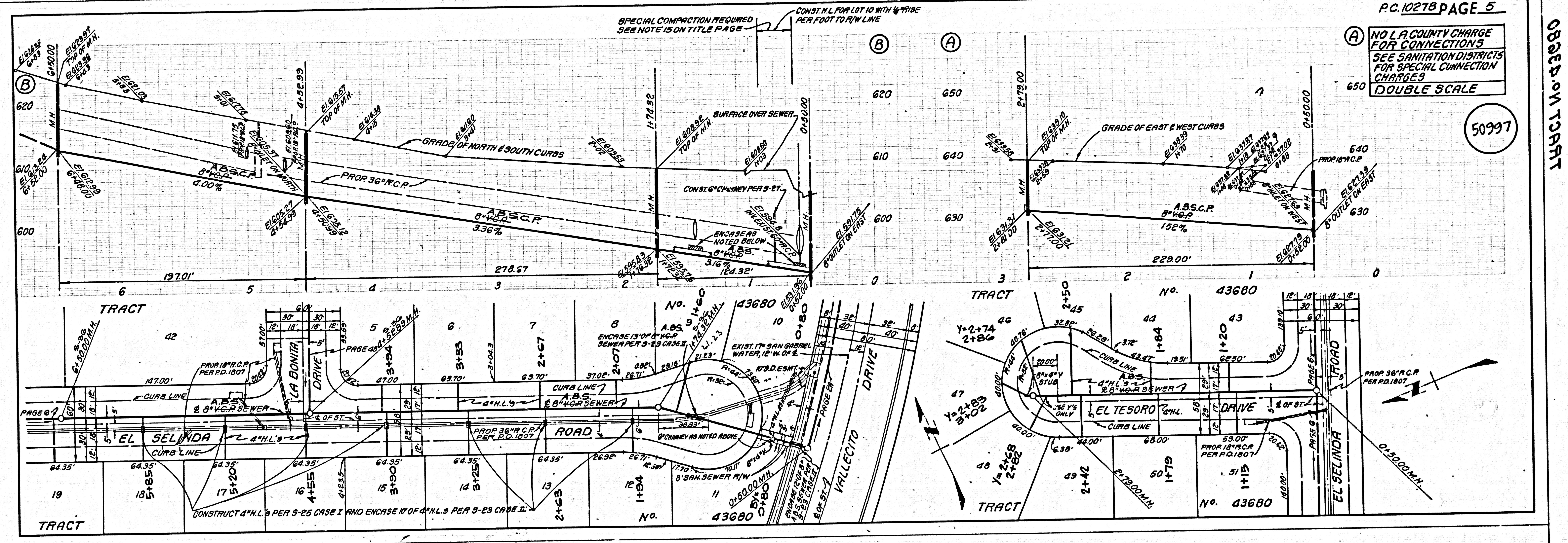
50996



08364.0N TRACT 87501.2A

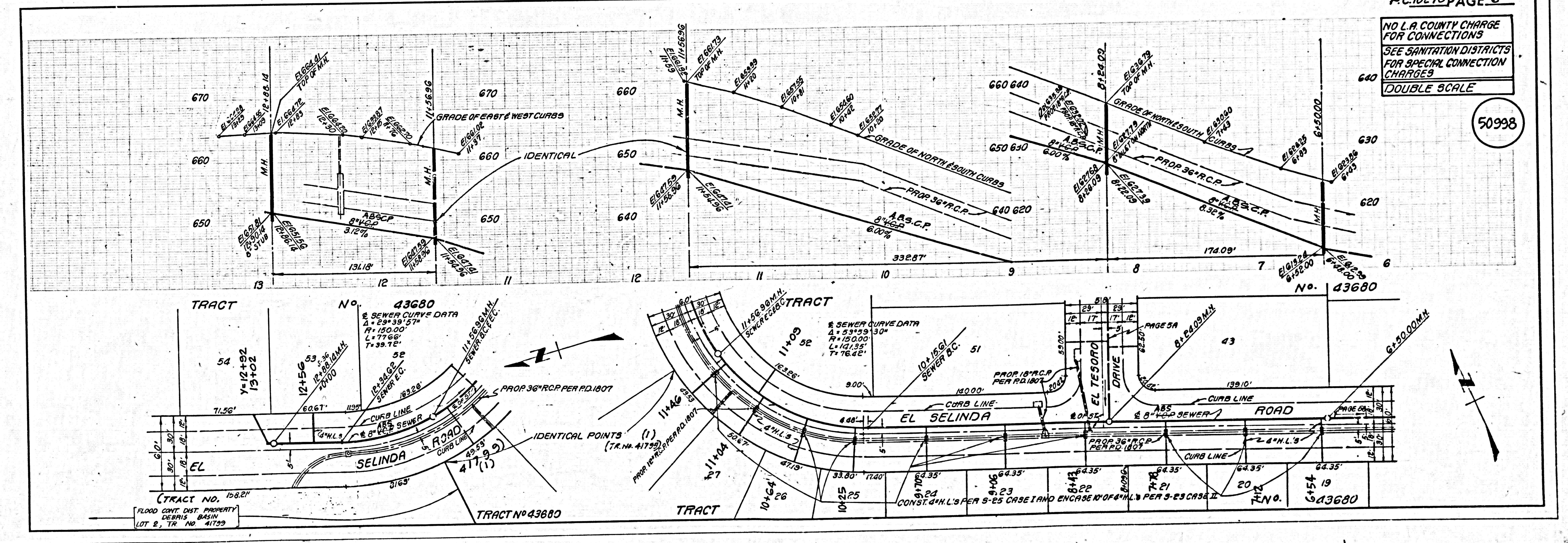
NO L.A. COUNTY CHARGE FOR CONNECTIONS
SEE SANITATION DISTRICTS FOR SPECIAL CONNECTION CHARGES
DOUBLE SCALE

50997



NO L.A. COUNTY CHARGE FOR CONNECTIONS
SEE SANITATION DISTRICTS FOR SPECIAL CONNECTION CHARGES
DOUBLE SCALE

50998



87501

87501.29
08324.01 TRACT