

SANITARY SEWERS

TO BE CONSTRUCTED IN
TRACT NO. 35754
PRIVATE CONTRACT NO. 10280

W.S. 39-02
 4 SHEETS, 8 PAGES
 SCALE: VERT. 1" = 4'
 HORIZ. 1" = 40'
 JUNE, 1984
 PREPARED IN THE OFFICES OF
PEELER & ASSOCIATES ENGINEERS
 1559 N. COLTON AVENUE, FULLERTON, CA, 92633
 BY: *Robert Peeler*
 REG. C. E. No. 12507

51225

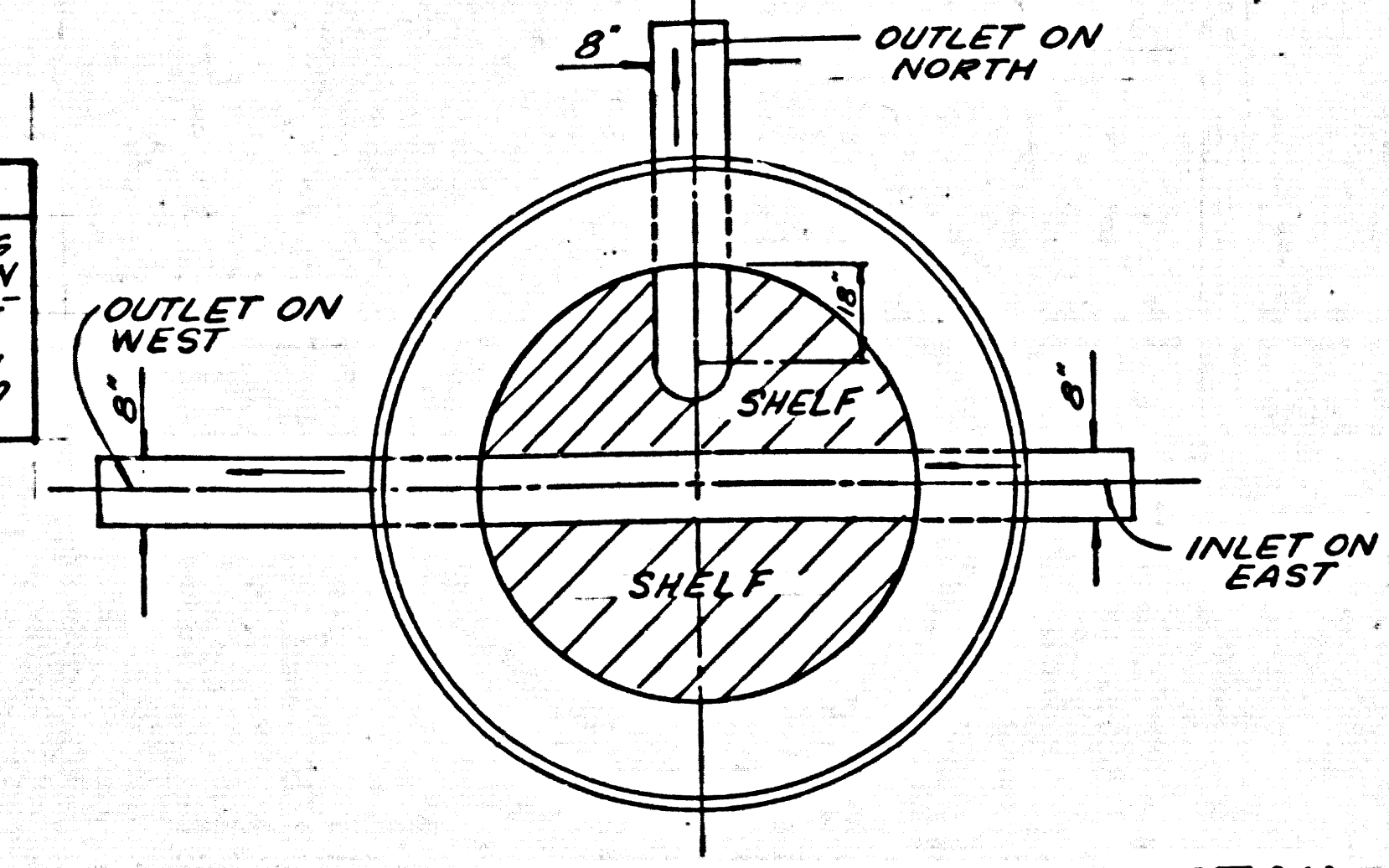
THE FOLLOWING LATEST REVISED STANDARD PLANS ON FILE IN THE OFFICE OF THE COUNTY ENGINEER SHALL APPLY IN THE CONSTRUCTION OF THIS PROJECT.

LEGEND	5-1
MINIMUM PUBLIC SAFETY REQUIREMENTS	5-2
BRICK MANHOLES	5-3
STANDARD MANHOLE STEPS	5-4
BRICKWORK FOR SEWER PIPE	5-5
CRACKING AND BRICKWORK	5-6
ALLOWABLE MINOR DEFECTS	5-7
BRICKWORK FOR SEWER PIPE	5-8
NON-REINFORCED PRECAST CONCRETE MANHOLE	5-9
REQUIREMENTS FOR PLASTIC PIPE	5-10
EROSION PROTECTION-STEEP SLOPES	5-11
SPECIAL HOUSE LATERALS	5-12

COUNTY OF LOS ANGELES, CALIFORNIA
 STEPHEN J. KOONCE, COUNTY ENGINEER
 CHARLES W. CARRY, CHIEF ENGINEER
 APPROVED: *Charles W. Carry* 12/10/84
 SAN DIMAS REGIONAL ENGINEER
 CHECKED: *Robert Peeler* 12/10/84
 SAN DIMAS REGIONAL ENGINEER
 M.B. NO. 14883
 SAN DIMAS, BLDG. DIST. 1000

CONSTRUCTION NOTES CONT'D

1. ALL COMPLIANCE WITH PART IV OF THE SPECIAL PROVISIONS IS REQUIRED FOR THE INSTALLATION OF A.B.S. COMPOSITE PIPE.
2. MAJOR WATER STOP GASKETS AND CLAMPS ARE REQUIRED FOR THE CONNECTION OF A.B.S. COMPOSITE PIPE TO MANHOLE STRUCTURES.
3. A.B.S. SOLID WALL PIPE MUST BE USED FOR WYE AND HOUSE LATERAL CONNECTIONS TO A.B.S. COMPOSITE MAINLINE SEWER PIPE.
4. A.B.S. COMPOSITE PIPE SHALL BE BEDDED IN CONFORMANCE WITH THE TABLE IN SECTION B-3.1 OF PART IV OF THE SPECIAL PROVISIONS.
5. 3-DEGREE DEFLECTION COUPLERS SHALL BE USED TO ACCOMPLISH RADIUS OF CURVATURE LESS THAN 300'.



CHANNEL RECONSTRUCTION DETAIL
 STA 29+72.04 P.C. 10280, PAGE 4 OF STA 29+64.68, P.C. 10187, PAGE 4 NO SCALE

NO CONNECTION FOR THE DISPOSAL OF INDUSTRIAL WASTES SHALL BE MADE TO SEWERS SHOWN ON THESE DRAWINGS UNTIL A PERMIT FOR INDUSTRIAL WASTEWATER DISCHARGE HAS BEEN ISSUED BY THE SANITATION DISTRICTS FOR SAID CONNECTION.

BEFORE BREAKING INTO OR CONSTRUCTION ON A COUNTY SANITATION DISTRICT SEWER AND PRIOR TO FINAL ACCEPTANCE OF THE PROJECT, SANITATION DISTRICT INSPECTOR SHALL BE NOTIFIED BY PHONE 818-962-8605 SO THAT REQUIRED INSPECTION CAN BE MADE.

NOTE: ISSUE HOUSE CONNECTION PERMIT FOR LOT 49, TRACT NO. 35754 FROM P.C. 10187, PAGE 50.

GENERAL NOTES:

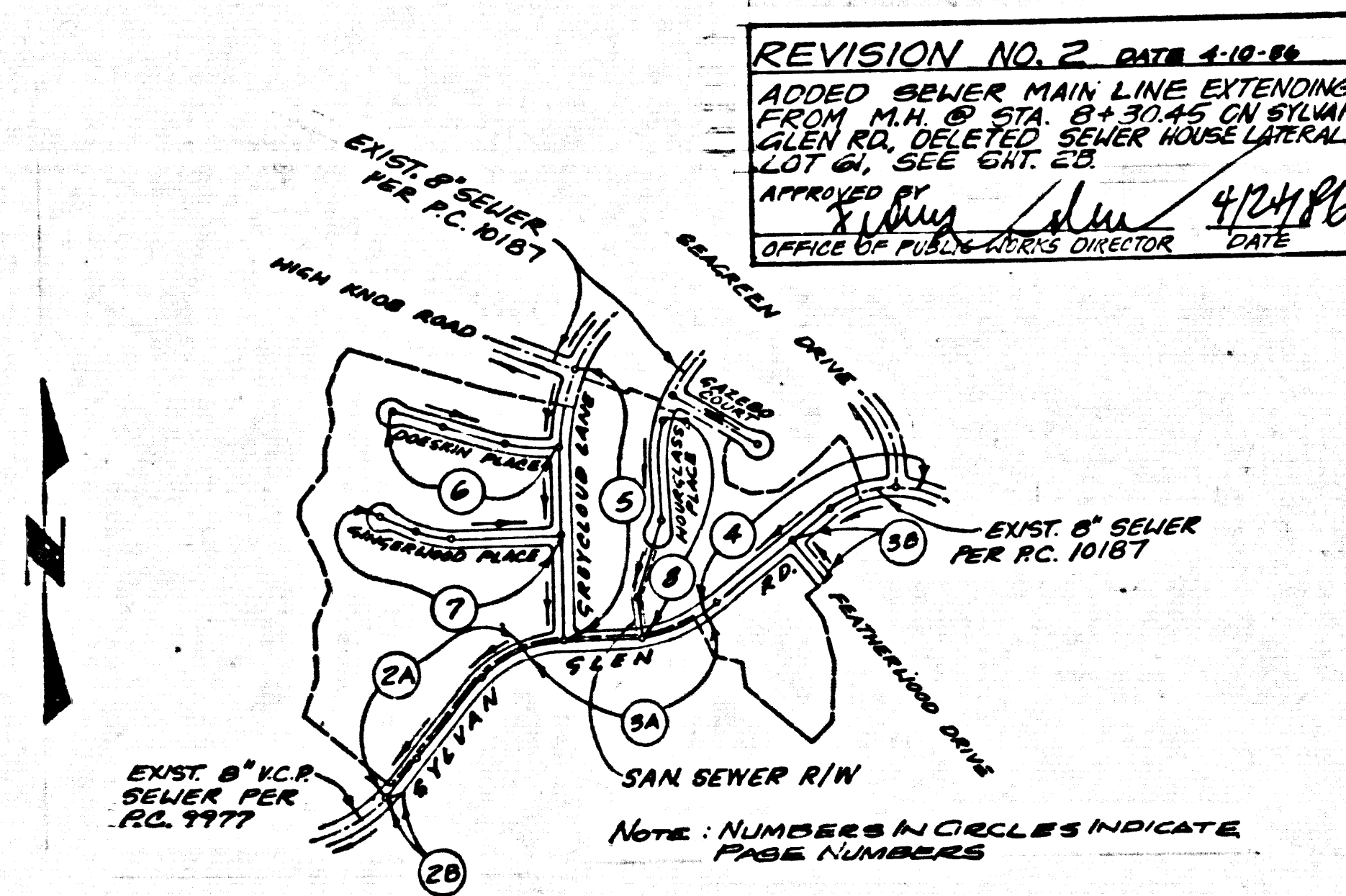
1. ELEVATIONS ARE IN FEET ABOVE U.S.C. & G.S. SEA LEVEL DATUM OF 1929.
2. NO REVISIONS SHALL BE MADE IN THESE PLANS WITHOUT THE APPROVAL OF THE COUNTY ENGINEER.
3. NO REPRESENTATIVE OF THE COUNTY ENGINEER WILL SURVEY OR LAY OUT ANY PORTION OF THE WORK.
4. GRADES TO WHICH THIS IMPROVEMENT IS TO BE CONSTRUCTED ARE SHOWN ON PLANS AND PROFILES. GRADE POINTS FOR TOP OF CURBS, CENTER LINE OF STREETS, OR CENTER LINE OF ALLEYS ARE SHOWN BY CIRCLES ON PROFILES AT ALL POINTS BETWEEN DESIGNATED POINTS. THE GRADE SHALL BE ESTABLISHED SO AS TO CONFORM TO A STRAIGHT LINE DRAWN BETWEEN SAID DESIGNATED POINTS.
5. THE PRIVATE ENGINEER SHALL FURNISH THE COUNTY ENGINEER WITH GRADE SHEETS AND STATIONING FOR ALL HOUSE LATERALS AND "Y" OR "T" BRANCHES AND SHALL PROVIDE STAKES FOR THEM AT THEIR PROPER LOCATIONS WITH STATIONING PLAINLY MARKED.
6. ALL HOUSE LATERALS SHALL BE CONSTRUCTED IN A STRAIGHT ALIGNMENT AT RIGHT ANGLES FROM THE MAIN LINE SEWER EXCEPT AS SHOWN ON THE PLANS. HOUSE LATERALS FROM CHIMNEYS SHALL NOT HAVE AN ANGLE OF LESS THAN 45° WITH THE MAIN LINE SEWER. ANY CHANGE IN ALIGNMENT SHALL BE RECORDED IN WRITING BY THE PRIVATE ENGINEER.
7. THE PRIVATE ENGINEER SHALL FURNISH THE HOUSE LATERAL DEPTH AT THE PROPERTY LINE BELOW THE TOP OF CURB ELEVATION FOR EACH HOUSE LATERAL ON THE GRADE SHEET.
8. BEFORE WORK CAN BE STARTED, THE CONTRACTOR MUST OBTAIN A PERMIT TO EXCAVATE IN COUNTY STREETS FROM THE L.A. COUNTY ROAD DEPT., DISTRICT OFFICE NO. 1, AND PAY A FEE TO THE COUNTY ENGINEER, 580 S. YERBAMONT AVENUE, LOS ANGELES, CA 90001, TO COVER THE COST OF CONSTRUCTION INSPECTION AND RECORD PLANS.
9. IF WORK IS TO BE DONE IN A STATE HIGHWAY, A PERMIT MUST BE OBTAINED FROM THE STATE OF CALIFORNIA, DIVISION OF HIGHWAYS, 120 SOUTH SPRING STREET, LOS ANGELES, CALIFORNIA.
10. APPROVAL OF THIS PLAN BY THE COUNTY OF LOS ANGELES DOES NOT CONSTITUTE A REPRESENTATION AS TO THE ACCURACY OF THE LOCATION OF OR THE EXISTENCE OR NON-EXISTENCE OF ANY UNDERGROUND UTILITY PIPE, OR STRUCTURE WITHIN THE LIMITS OF THIS PROJECT. THIS NOTE APPLIES TO ALL PAGES.
11. REFER TO SECTION 7.0.1.1 OF THE STANDARD SPECIFICATIONS, REGARDING SAFETY ORDERS.
12. PRIOR TO THE ISSUANCE OF THE REQUIRED SEWER CONSTRUCTION PERMIT, THE CONTRACTOR SHALL OBTAIN AND FILE WITH THE COUNTY ENGINEER COPIES OF A PERMIT TO EXCAVATE IN COUNTY STREETS FROM THE LOS ANGELES COUNTY ROAD DEPARTMENT, A PERMIT FOR EXCAVATIONS AND TRENCHES FROM THE STATE OF CALIFORNIA, DIVISION OF INDUSTRIAL SAFETY AND A CERTIFICATE OF WORKERS COMPENSATION INSURANCE WITH THE DEPARTMENT OF COUNTY ENGINEER, 580 SOUTH YERBAMONT, RM. 408, LOS ANGELES, CALIFORNIA 90020, NAMED AS THE CERTIFICATE HOLDER TO BE NOTIFIED 30 DAYS PRIOR TO CANCELLATION OF POLICY.

CONSTRUCTION NOTES:

1. WORK SHALL BE CONSTRUCTED ACCORDING TO THE STANDARD SPECIFICATIONS FOR PUBLIC WORKS CONSTRUCTION (1982 EDITION WITH 1983 SUPPLEMENTS) AND COUNTY ENGINEER SPECIAL PROVISIONS FOR THE CONSTRUCTION OF SANITARY SEWERS DATED SEPT 21, 1976 AND SHALL BE PROSECUTED ONLY IN THE PRESENCE OF THE COUNTY ENGINEER.
2. THE CONTRACTOR SHALL NOTIFY THE PROJECT MANAGEMENT DIVISION BY TELEPHONE 798-5181 AT LEAST TWENTY-FOUR HOURS BEFORE STARTING ANY WORK UNDER THIS CONTRACT.
3. HOUSE LATERALS TO BE CONSTRUCTED WITH INVERTS AT PROPERTY LINE 4 FEET BELOW CURB GRADE EXCEPT AS NOTED.
4. WYE OR TEE BRANCHES MAY BE USED FOR CONNECTIONS TO MAINLINE SEWERS EXCEPT AS NOTED.
5. WYE BRANCHES ONLY MAY BE USED FOR CONNECTIONS TO MAINLINE SEWER PIPES OF A.B.S.C.P. EXCEPT AS NOTED.
6. ALL STRUCTURES SHALL BE EITHER BRICK MANHOLES PER S-3 OR PRECAST CONCRETE MANHOLES PER S-3A, EXCEPT AS NOTED.
7. PROVIDE STAKES ON THE PROPERTY LINE OR PROPERTY LINES PRODUCED AT RIGHT ANGLES TO THE SEWER LINE AT THE CENTER LINE OF EACH MANHOLE.
8. MANHOLE TOPS IN UNIMPROVED RIGHTS OF WAY TO BE SIX INCHES ABOVE FINISHED GRADE.
9. WITHELD CLAY PIPE JOINTS SHALL BE TYPE "D" OR "B" PER STANDARD SPECIFICATIONS SECTION 308-2.
10. IF A POWER POLE IS WITHIN THREE FEET OF THE SEWER, THE SEWER SHALL BE ENCASED, PER S-23, CASE II, TWO FEET ON EACH SIDE FROM THE POINT OF INTERFERENCE.
11. IF DURING THE COURSE OF CONSTRUCTION IT IS DETERMINED THAT THERE IS LESS THAN FOUR FEET OF COVER OVER THE TOP OF A MAIN LINE OR HOUSE LATERAL SEWER WHICH IS NOT INDICATED ON THE PLANS, THE PIPE SHALL BE ENCASED PER S-23, CASE II UNLESS OTHERWISE APPROVED BY THE COUNTY ENGINEER.
12. ALL JOINTS BETWEEN CAST IRON PIPE AND WITHELD CLAY PIPE SHALL BE MADE WITH A RUBBER SLEEVE JOINT, TYPE "C" OR "D".
13. ALL JOINTS BETWEEN CAST IRON PIPE AND A.B.S.C.P. SHALL BE MADE WITH APPROVED FITTINGS.
14. SEWERS TO BE INSTALLED IN ACCORDANCE WITH SECTION 308-2.1 OF THE STANDARD SPECIFICATIONS AND SPECIAL PROVISIONS.
15. REINFORCE ALL TRENCHES WITHIN PAVED AREAS TO MEET L.A. COUNTY ROAD DEPT. OR CALIFORNIA STATE HIGHWAY REQUIREMENTS IN ACCORDANCE WITH PERMITS.
16. FULL COMPLIANCE WITH SECTION 308-1.5.8 OF THE SPECIAL PROVISIONS WILL BE REQUIRED FOR BACKFILL IN STREETS. CERTIFICATION OF BACKFILL COMPACTION AND SAND EQUIVALENTS BY A QUALIFIED, REGISTERED TESTING LABORATORY SHALL BE PROVIDED BY THE PERMITTEE PRIOR TO THE ISSUANCE OF A CERTIFICATE OF PARTIAL ACCEPTANCE.
17. SPECIAL BACKFILL IN EASEMENT CONSTRUCTION: (A) BACKFILL TRENCH AND REPLACE OTHER EARTH SO AS TO ACHIEVE THE NATURAL OR FINISHED GRADES AND SLOPES SHOWN ON THE GRADING PLAN APPROVED FOR THE DEVELOPMENT BY THE BUILDING AND SAFETY DIVISION. (B) ALL BACKFILL AND EARTH PLACED SHALL BE COMPACTED TO A MINIMUM OF 90% OF MAXIMUM DENSITY PER A.S.T.M. STD. METHOD OF TEST 9985T AT AN APPROVED ACCEPTABLE CERTIFICATION OF SUCH COMPACTION SHALL BE SUBMITTED TO THE PROJECT MANAGEMENT DIVISION.

B.M. CG 3718 ELEV. 674.731
 RDBM TAG IN CB 34 FT. E/O BCR
 25 FT. S & 100 FT. E/O & INT.
 DIAMOND BAR BLVD. & SUNSET
 CROSSING ROAD.
 UTTERBEIN QUAD. 19 20

DOUBLE SCALE

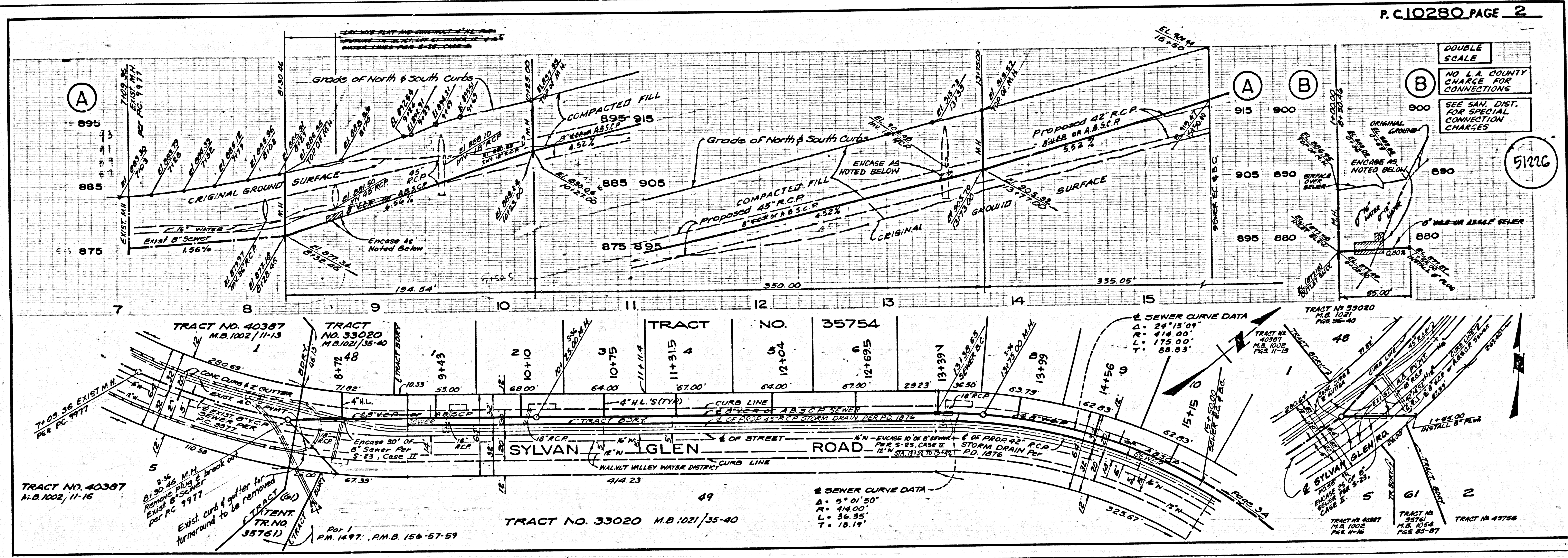


INDEX MAP
 P.C. 10280 TRACT NO. 35754
 SCALE: 1" = 600'

REVISION NO. 1 DATE 2-18-86

REVISED SEWER AND ROAD ELEVATIONS AS FOLLOWS	FROM STA.	TO STA.	CHANGE
1	SYLVAN GLEN ROAD	0+33	187.50 RAISED
2	SYLVAN GLEN ROAD	18+50	171.00
3	GINGERWOOD PLACE	4+25	71.33
4	HOURLASS PLACE	3+00	61.55

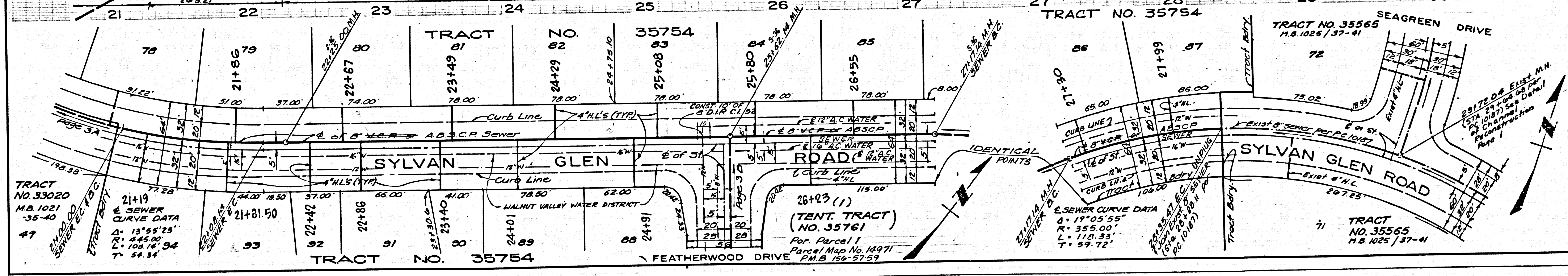
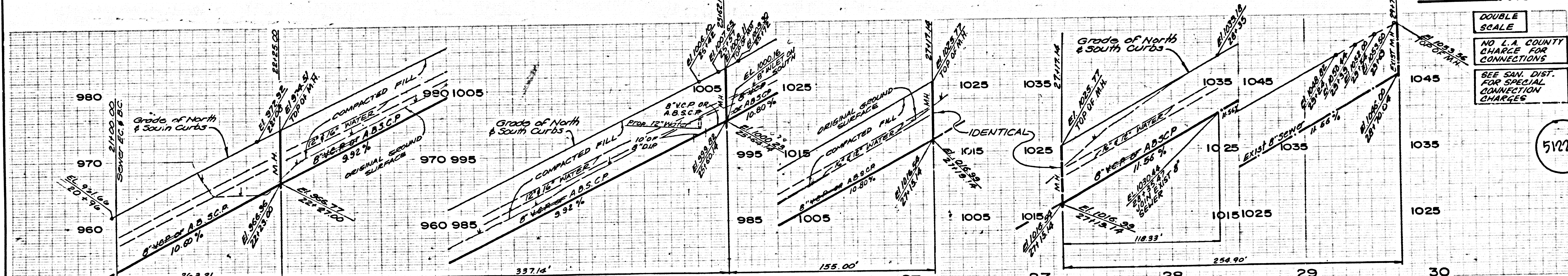
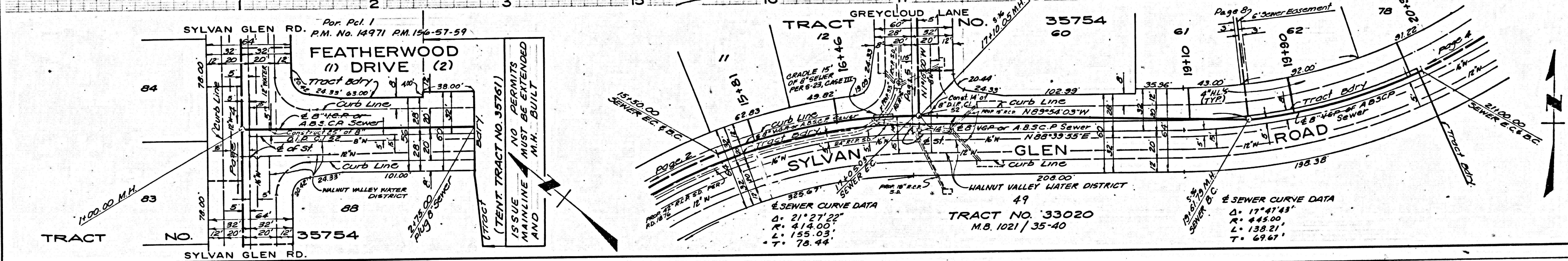
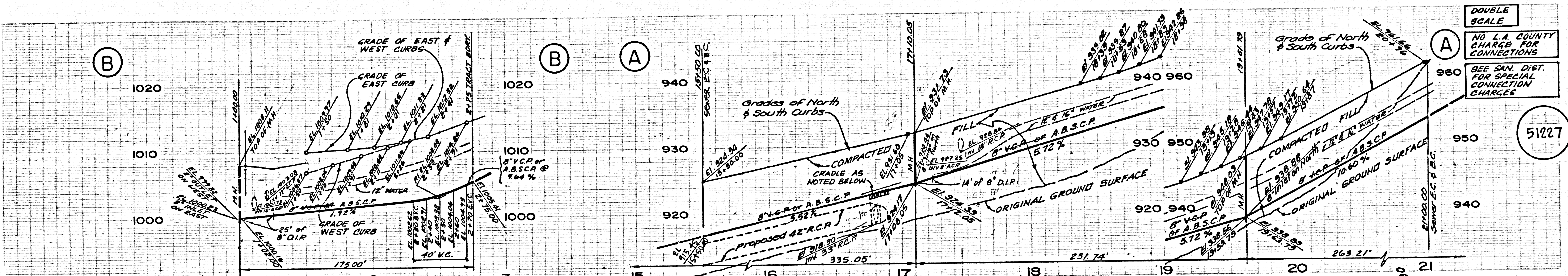
APPROVED BY: *Robert Peeler* DATE 2/18/86



DOUBLE SCALE
 NO L.A. COUNTY CHARGE FOR CONNECTIONS
 SEE SAN. DIST. FOR SPECIAL CONNECTION CHARGES

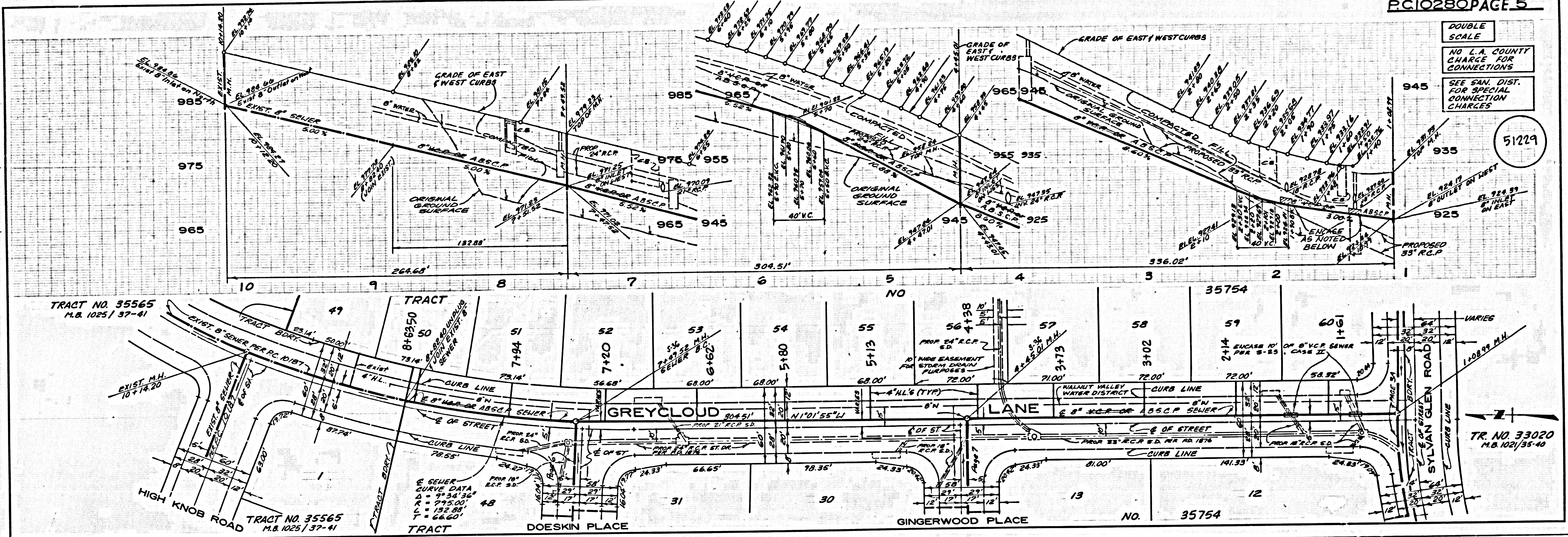
51226

25732 ON T-CART



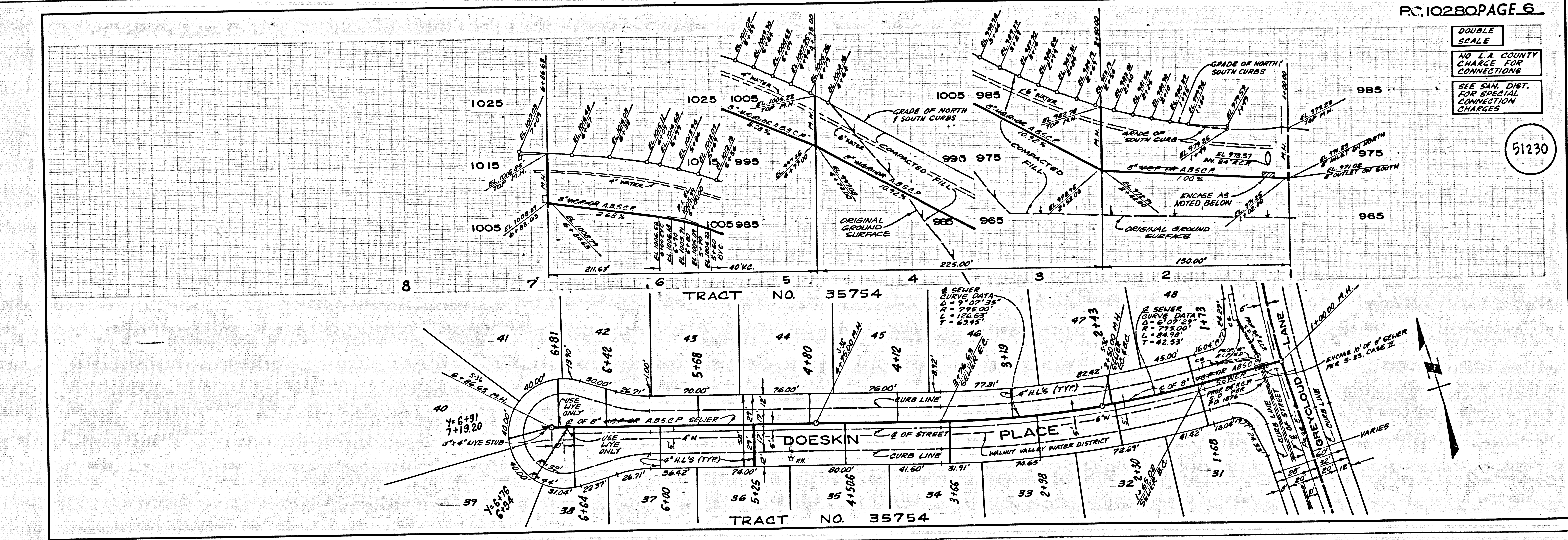
08501 39

42732 ON TRACT



DOUBLE SCALE
 NO L.A. COUNTY CHARGE FOR CONNECTIONS
 SEE SAN. DIST. FOR SPECIAL CONNECTION CHARGES

51229

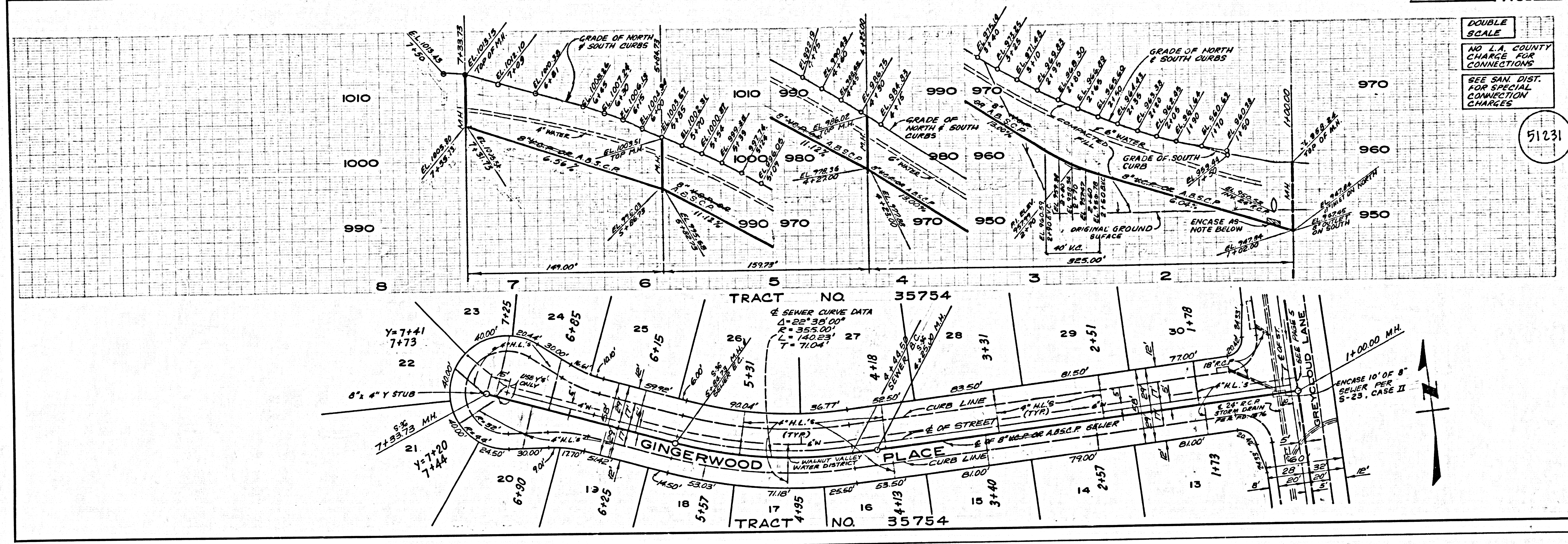


DOUBLE SCALE
 NO L.A. COUNTY CHARGE FOR CONNECTIONS
 SEE SAN. DIST. FOR SPECIAL CONNECTION CHARGES

51230

08501 29

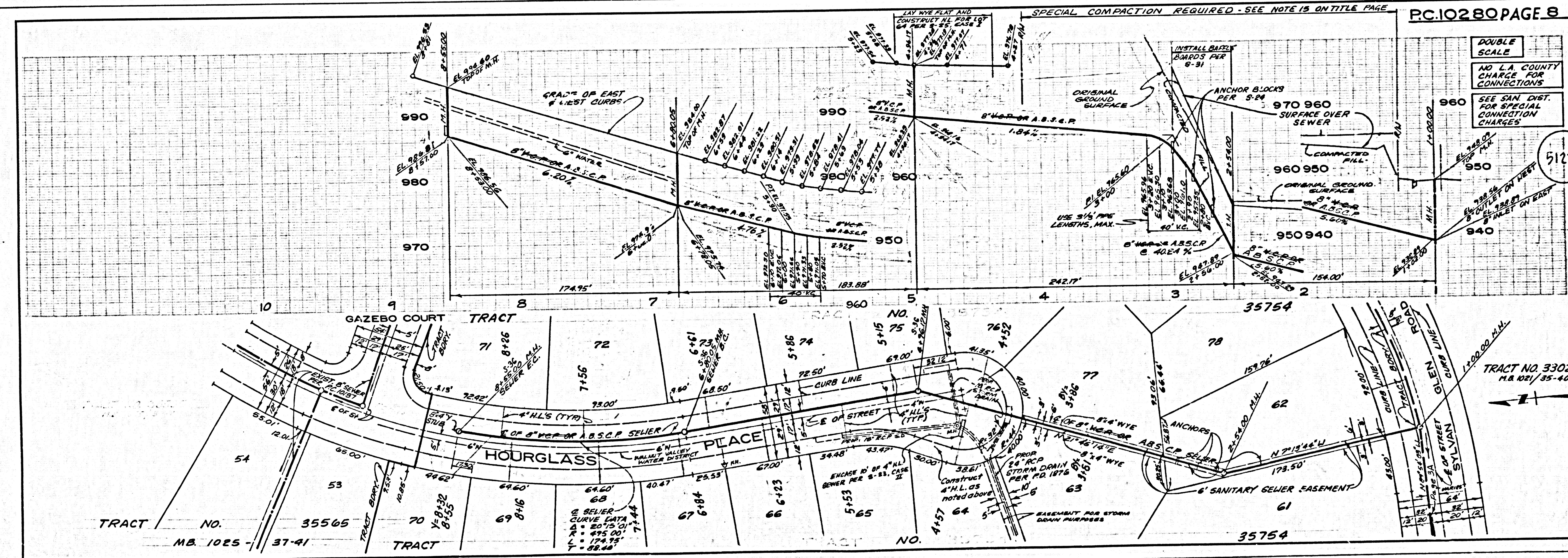
42523 ON TRACT



DOUBLE SCALE
 NO L.A. COUNTY CHARGE FOR CONNECTIONS
 SEE SAN. DIST. FOR SPECIAL CONNECTION CHARGES

51231

08501 29



DOUBLE SCALE
 NO L.A. COUNTY CHARGE FOR CONNECTIONS
 SEE SAN. DIST. FOR SPECIAL CONNECTION CHARGES

51232

42732 ON TRACT