

SANITARY SEWERS

TO BE CONSTRUCTED IN

TRACT NO. 35761 51237
 PRIVATE CONTRACT NO. 10281

D-154
 W.S. 59-02

3 SHEETS, 6 PAGES

SCALE: VERT. 1"=8' HORIZ. 1"=40' JUNE, 1984

PREPARED IN THE OFFICES OF
PFELLER & ASSOCIATES, ENGINEERS
 1559 N. COMMONWEALTH AVE., FULLERTON, CALIF. 92633
 BY: *John F. Peller* REG. E. E. No. 12507

THE FOLLOWING LATEST REVISED STANDARD PLANS ON FILE IN THE OFFICE OF THE COUNTY ENGINEER SHALL APPLY IN THE CONSTRUCTION OF THIS PROJECT.

1000	MINIMUM PUBLIC SAFETY REQUIREMENTS	5.1
1001	MINIMUM PUBLIC SAFETY REQUIREMENTS	5.2
1002	MINIMUM PUBLIC SAFETY REQUIREMENTS	5.3
1003	MINIMUM PUBLIC SAFETY REQUIREMENTS	5.4
1004	MINIMUM PUBLIC SAFETY REQUIREMENTS	5.5
1005	MINIMUM PUBLIC SAFETY REQUIREMENTS	5.6
1006	MINIMUM PUBLIC SAFETY REQUIREMENTS	5.7
1007	MINIMUM PUBLIC SAFETY REQUIREMENTS	5.8
1008	MINIMUM PUBLIC SAFETY REQUIREMENTS	5.9
1009	MINIMUM PUBLIC SAFETY REQUIREMENTS	5.10
1010	MINIMUM PUBLIC SAFETY REQUIREMENTS	5.11
1011	MINIMUM PUBLIC SAFETY REQUIREMENTS	5.12
1012	MINIMUM PUBLIC SAFETY REQUIREMENTS	5.13
1013	MINIMUM PUBLIC SAFETY REQUIREMENTS	5.14
1014	MINIMUM PUBLIC SAFETY REQUIREMENTS	5.15
1015	MINIMUM PUBLIC SAFETY REQUIREMENTS	5.16
1016	MINIMUM PUBLIC SAFETY REQUIREMENTS	5.17
1017	MINIMUM PUBLIC SAFETY REQUIREMENTS	5.18
1018	MINIMUM PUBLIC SAFETY REQUIREMENTS	5.19
1019	MINIMUM PUBLIC SAFETY REQUIREMENTS	5.20
1020	MINIMUM PUBLIC SAFETY REQUIREMENTS	5.21
1021	MINIMUM PUBLIC SAFETY REQUIREMENTS	5.22
1022	MINIMUM PUBLIC SAFETY REQUIREMENTS	5.23
1023	MINIMUM PUBLIC SAFETY REQUIREMENTS	5.24
1024	MINIMUM PUBLIC SAFETY REQUIREMENTS	5.25
1025	MINIMUM PUBLIC SAFETY REQUIREMENTS	5.26
1026	MINIMUM PUBLIC SAFETY REQUIREMENTS	5.27
1027	MINIMUM PUBLIC SAFETY REQUIREMENTS	5.28
1028	MINIMUM PUBLIC SAFETY REQUIREMENTS	5.29
1029	MINIMUM PUBLIC SAFETY REQUIREMENTS	5.30
1030	MINIMUM PUBLIC SAFETY REQUIREMENTS	5.31
1031	MINIMUM PUBLIC SAFETY REQUIREMENTS	5.32
1032	MINIMUM PUBLIC SAFETY REQUIREMENTS	5.33
1033	MINIMUM PUBLIC SAFETY REQUIREMENTS	5.34
1034	MINIMUM PUBLIC SAFETY REQUIREMENTS	5.35
1035	MINIMUM PUBLIC SAFETY REQUIREMENTS	5.36
1036	MINIMUM PUBLIC SAFETY REQUIREMENTS	5.37
1037	MINIMUM PUBLIC SAFETY REQUIREMENTS	5.38
1038	MINIMUM PUBLIC SAFETY REQUIREMENTS	5.39
1039	MINIMUM PUBLIC SAFETY REQUIREMENTS	5.40
1040	MINIMUM PUBLIC SAFETY REQUIREMENTS	5.41
1041	MINIMUM PUBLIC SAFETY REQUIREMENTS	5.42
1042	MINIMUM PUBLIC SAFETY REQUIREMENTS	5.43
1043	MINIMUM PUBLIC SAFETY REQUIREMENTS	5.44
1044	MINIMUM PUBLIC SAFETY REQUIREMENTS	5.45
1045	MINIMUM PUBLIC SAFETY REQUIREMENTS	5.46
1046	MINIMUM PUBLIC SAFETY REQUIREMENTS	5.47
1047	MINIMUM PUBLIC SAFETY REQUIREMENTS	5.48
1048	MINIMUM PUBLIC SAFETY REQUIREMENTS	5.49
1049	MINIMUM PUBLIC SAFETY REQUIREMENTS	5.50
1050	MINIMUM PUBLIC SAFETY REQUIREMENTS	5.51
1051	MINIMUM PUBLIC SAFETY REQUIREMENTS	5.52
1052	MINIMUM PUBLIC SAFETY REQUIREMENTS	5.53
1053	MINIMUM PUBLIC SAFETY REQUIREMENTS	5.54
1054	MINIMUM PUBLIC SAFETY REQUIREMENTS	5.55
1055	MINIMUM PUBLIC SAFETY REQUIREMENTS	5.56
1056	MINIMUM PUBLIC SAFETY REQUIREMENTS	5.57
1057	MINIMUM PUBLIC SAFETY REQUIREMENTS	5.58
1058	MINIMUM PUBLIC SAFETY REQUIREMENTS	5.59
1059	MINIMUM PUBLIC SAFETY REQUIREMENTS	5.60
1060	MINIMUM PUBLIC SAFETY REQUIREMENTS	5.61
1061	MINIMUM PUBLIC SAFETY REQUIREMENTS	5.62
1062	MINIMUM PUBLIC SAFETY REQUIREMENTS	5.63
1063	MINIMUM PUBLIC SAFETY REQUIREMENTS	5.64
1064	MINIMUM PUBLIC SAFETY REQUIREMENTS	5.65
1065	MINIMUM PUBLIC SAFETY REQUIREMENTS	5.66
1066	MINIMUM PUBLIC SAFETY REQUIREMENTS	5.67
1067	MINIMUM PUBLIC SAFETY REQUIREMENTS	5.68
1068	MINIMUM PUBLIC SAFETY REQUIREMENTS	5.69
1069	MINIMUM PUBLIC SAFETY REQUIREMENTS	5.70
1070	MINIMUM PUBLIC SAFETY REQUIREMENTS	5.71
1071	MINIMUM PUBLIC SAFETY REQUIREMENTS	5.72
1072	MINIMUM PUBLIC SAFETY REQUIREMENTS	5.73
1073	MINIMUM PUBLIC SAFETY REQUIREMENTS	5.74
1074	MINIMUM PUBLIC SAFETY REQUIREMENTS	5.75
1075	MINIMUM PUBLIC SAFETY REQUIREMENTS	5.76
1076	MINIMUM PUBLIC SAFETY REQUIREMENTS	5.77
1077	MINIMUM PUBLIC SAFETY REQUIREMENTS	5.78
1078	MINIMUM PUBLIC SAFETY REQUIREMENTS	5.79
1079	MINIMUM PUBLIC SAFETY REQUIREMENTS	5.80
1080	MINIMUM PUBLIC SAFETY REQUIREMENTS	5.81
1081	MINIMUM PUBLIC SAFETY REQUIREMENTS	5.82
1082	MINIMUM PUBLIC SAFETY REQUIREMENTS	5.83
1083	MINIMUM PUBLIC SAFETY REQUIREMENTS	5.84
1084	MINIMUM PUBLIC SAFETY REQUIREMENTS	5.85
1085	MINIMUM PUBLIC SAFETY REQUIREMENTS	5.86
1086	MINIMUM PUBLIC SAFETY REQUIREMENTS	5.87
1087	MINIMUM PUBLIC SAFETY REQUIREMENTS	5.88
1088	MINIMUM PUBLIC SAFETY REQUIREMENTS	5.89
1089	MINIMUM PUBLIC SAFETY REQUIREMENTS	5.90
1090	MINIMUM PUBLIC SAFETY REQUIREMENTS	5.91
1091	MINIMUM PUBLIC SAFETY REQUIREMENTS	5.92
1092	MINIMUM PUBLIC SAFETY REQUIREMENTS	5.93
1093	MINIMUM PUBLIC SAFETY REQUIREMENTS	5.94
1094	MINIMUM PUBLIC SAFETY REQUIREMENTS	5.95
1095	MINIMUM PUBLIC SAFETY REQUIREMENTS	5.96
1096	MINIMUM PUBLIC SAFETY REQUIREMENTS	5.97
1097	MINIMUM PUBLIC SAFETY REQUIREMENTS	5.98
1098	MINIMUM PUBLIC SAFETY REQUIREMENTS	5.99
1099	MINIMUM PUBLIC SAFETY REQUIREMENTS	5.100

COUNTY OF LOS ANGELES, CALIFORNIA
 THOMAS A. TIDWELL, CHIEF ENGINEER
 APPROVED: *Ralph Davis* DATE: 7/14/84
 CHECKED: *Sandy G. Jelic* DATE: 7/14/84
 REG. E. E. NO. 33154
 SAN. DRWS. BLDG. DIST. 10.00

DOUBLE SCALE

CONSTRUCTION NOTES CONT'D

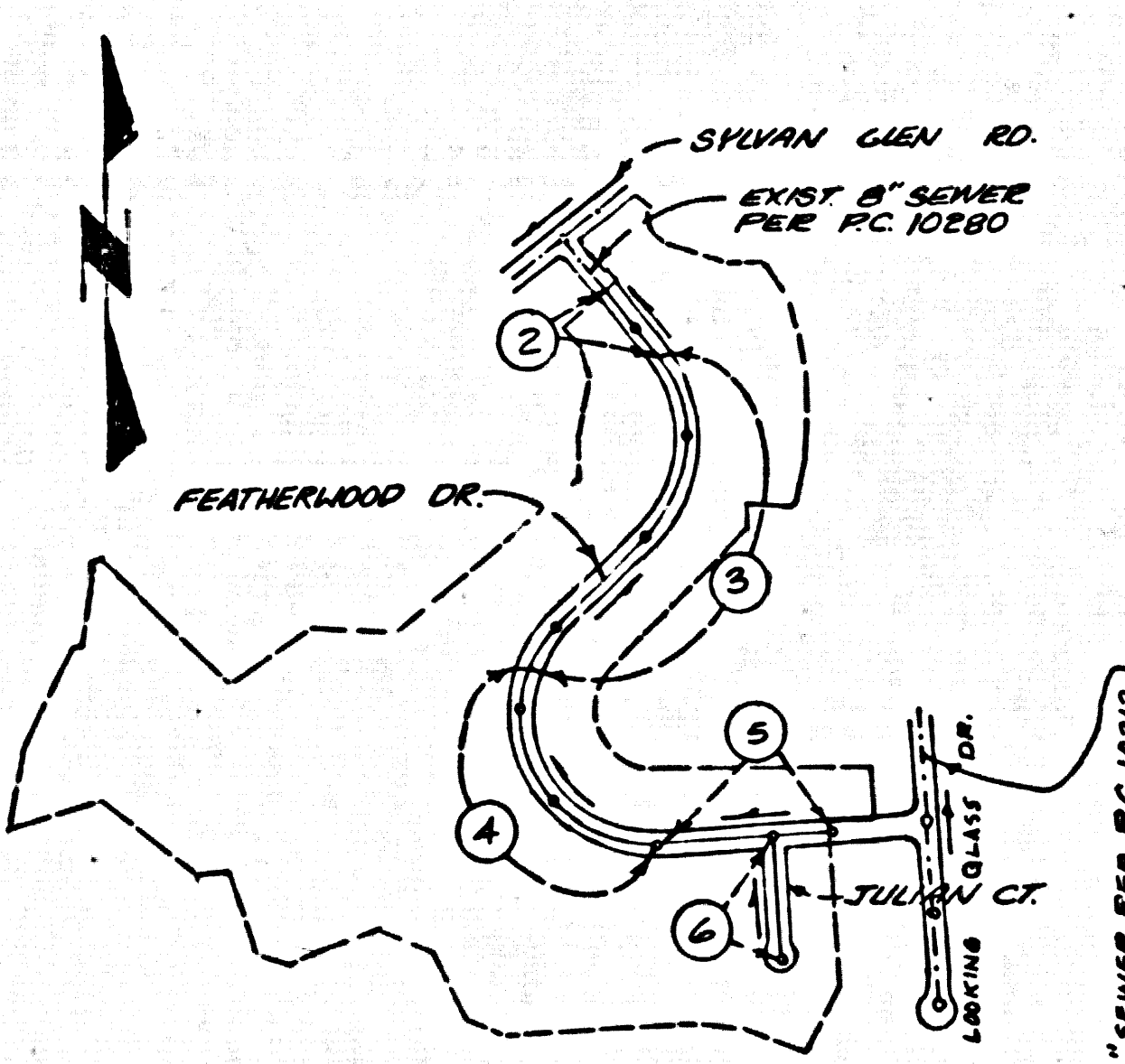
16. FULL COMPLIANCE WITH PART IV OF THE SPECIAL PROVISIONS IS REQUIRED FOR THE INSTALLATION OF A.B.S. COMPOSITE PIPE.
17. MANHOLE WATER STOP GASKETS AND CLAMPS ARE REQUIRED FOR THE CONNECTION OF A.B.S. COMPOSITE PIPE TO MANHOLE STRUCTURES.
18. A.B.S. SOLID WALL PIPE MUST BE USED FOR WYE AND HOUSE LATERAL CONNECTIONS TO A.B.S. COMPOSITE MAIN LINE SEWER PIPE.
19. A.B.S. COMPOSITE PIPE SHALL BE BEDDED IN CONFORMANCE WITH THE TABLE IN SECTION B-3.1 OF PART IV OF THE SPECIAL PROVISIONS.
20. 3-DEGREE DEFLECTION COUPLERS SHALL BE USED TO ACCOMPLISH RADII OF CURVATURE LESS THAN 360°.
21. ALL REFERENCES ON THIS PLAN TO THE COUNTY ENGINEER, THE SAN. DIST., OR THE FLOOD CONTROL DISTRICT SHALL APPLY TO THOSE APPROPRIATE SECTIONS OF THE DEPARTMENT OF PUBLIC WORKS.

REVISION NO. 2	DATE: 4/18/86
ADDED CHIMNEYS FOR THE LATERALS TO SERVE LOTS 19 THROUGH 26 AND 64 THROUGH 73 ON PAGES 3 AND 4.	
ADDED SEWER LATERAL TO SERVE LOT 1 ON PAGE 4.	
APPROVED: <i>[Signature]</i>	DATE: 4/24/86
REVISION NO. 1	DATE: 1/22/86
REVISED SEWER ELEVATIONS AND CURB ELEVATIONS ON FEATHERWOOD DRIVE (PAGES 3 AND 4).	
APPROVED: <i>[Signature]</i>	DATE: 5/17/86
OFFICE OF PUBLIC WORKS DIRECTOR	
NOTE: ISSUE NO HOUSE CONNECTION PERMITS UNTIL P.C.'S 9977 & 10280 ARE ACCEPTED.	
NOTE: ISSUE NO PERMIT FOR LOT 1 FROM P.C. 10280, PAGE 4; LOT 10 FROM P.C. 10281, PAGE 3; LOT 61 FROM P.C. 10280, PAGE 2.	

NO CONNECTION FOR THE DISPOSAL OF INDUSTRIAL WASTE SHALL BE MADE TO SEWERS UNLESS THE WASTE IS FIRST TREATED TO SUCH A DEGREE THAT THE WASTE WATER DISCHARGE HAS BEEN ISSUED BY THE SANITATION DISTRICT FOR SAID CONNECTION.

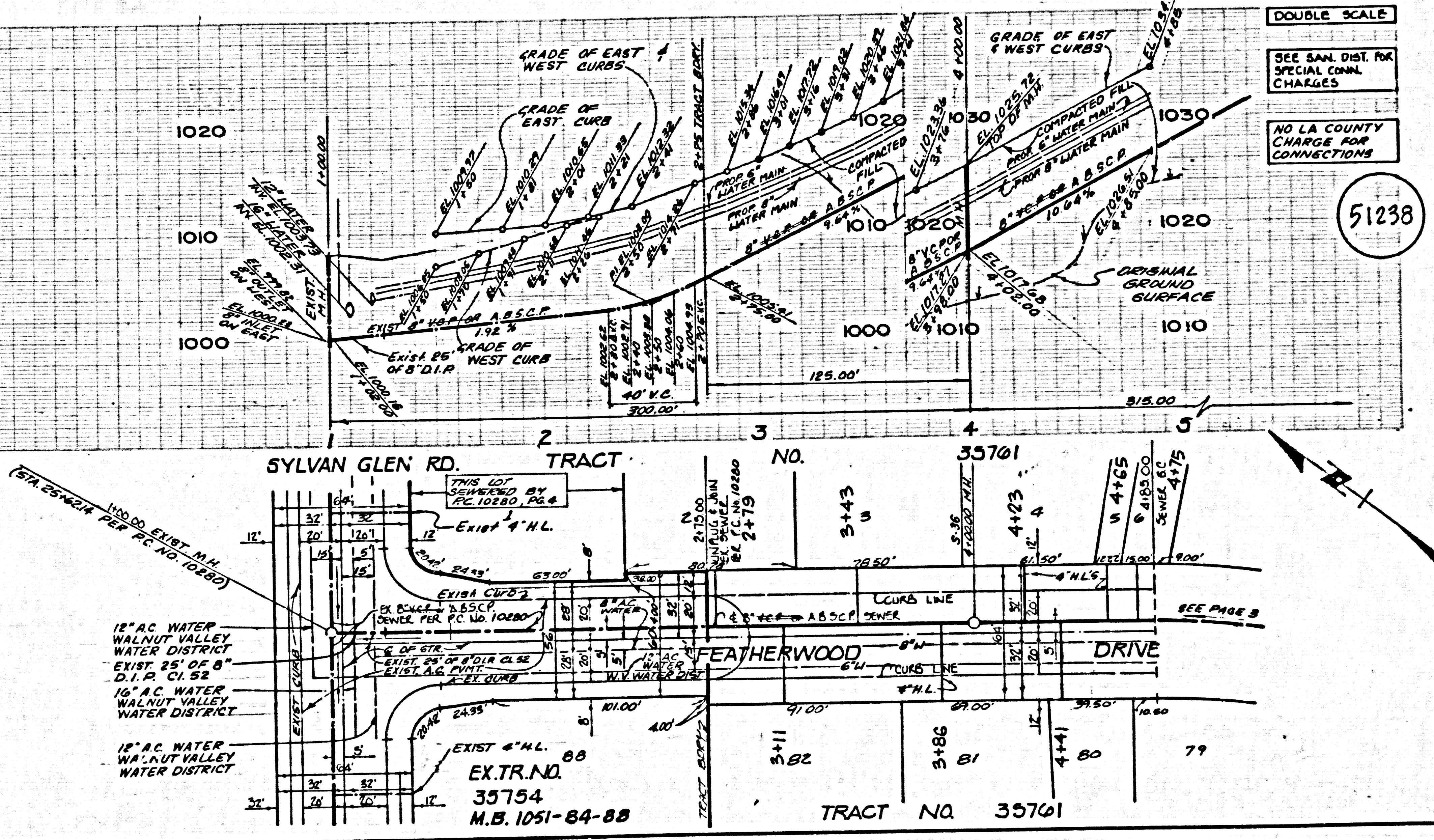
BEFORE BREAKING INTO OR CONSTRUCTION IN A COUNTY SANITATION DISTRICT SEWER AND PRIOR TO FINAL ACCEPTANCE OF THE PROJECT SANITATION DISTRICT INSPECTOR SHALL BE NOTIFIED BY PHONE (818) 966-8689 SO THAT REQUIRED INSPECTION CAN BE MADE.

B.M. CG 3718 ELEV. 694.731
 R.D.M. TAG IN C.B. 34 FT. E.L.O. 656
 25 FT. S. & 100 FT. E.L.O. E. INTERSECTION
 DIAMOND BAR BLVD. & SUNSET CROSSING
 ROAD.
 OTTERBEIN QUAD. 19 50



INDEX MAP
 P.C. 10281 TRACT NO. 35761
 SCALE: 1" = 600'

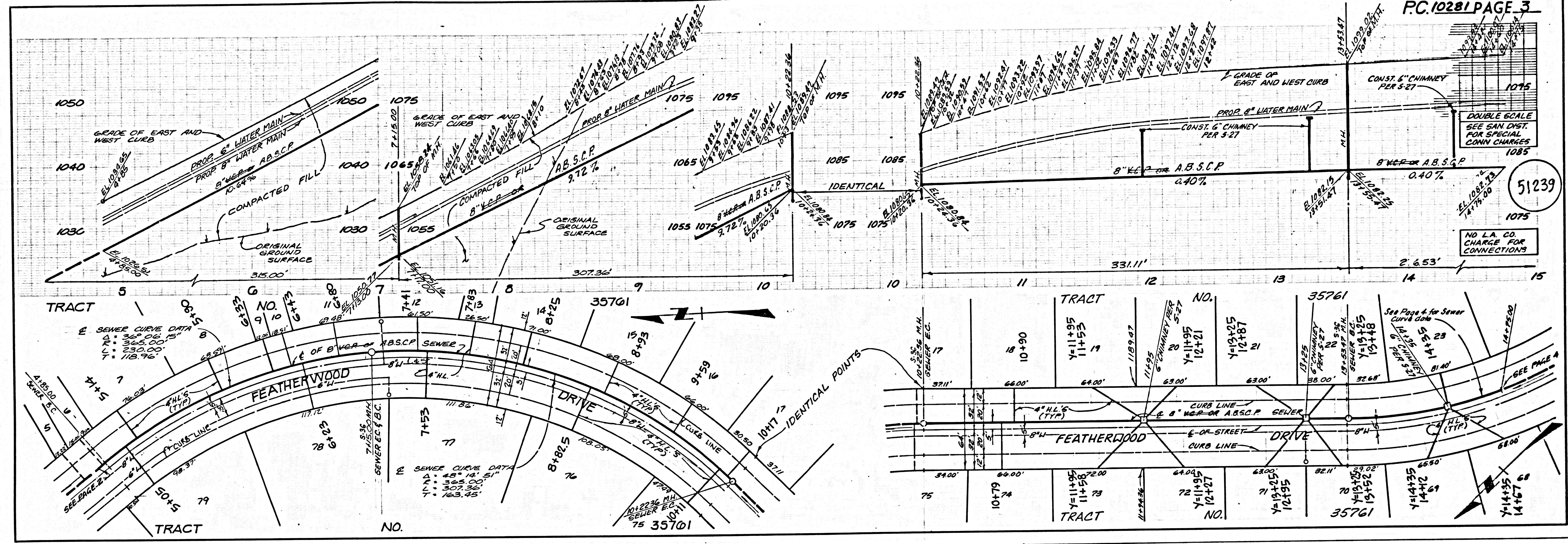
NOTE: NUMBERS IN CIRCLES INDICATE PAGE NUMBERS



18\"/>

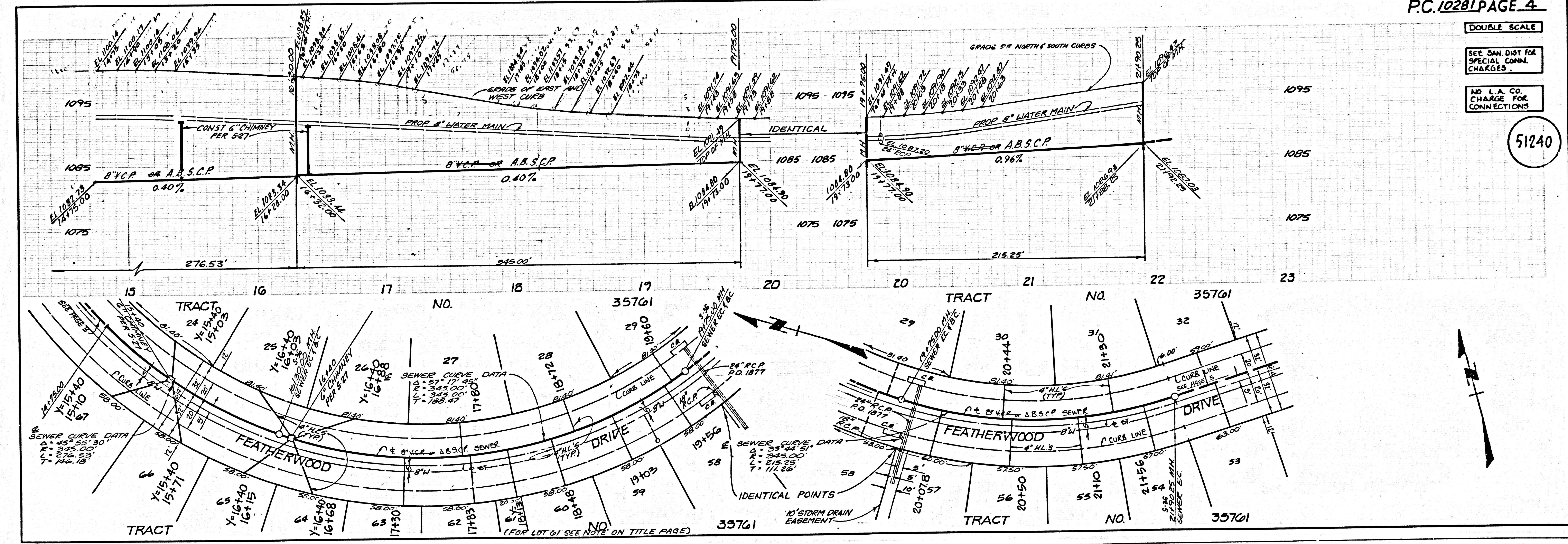
EX. TR. NO. 35754
 M.B. 1051-84-88

TRACT NO. 35761



DOUBLE SCALE
SEE SAN DIST.
FOR SPECIAL
CONN. CHARGES

NO L.A. CO.
CHARGE FOR
CONNECTIONS



DOUBLE SCALE
SEE SAN DIST.
FOR SPECIAL
CONN. CHARGES

NO L.A. CO.
CHARGE FOR
CONNECTIONS

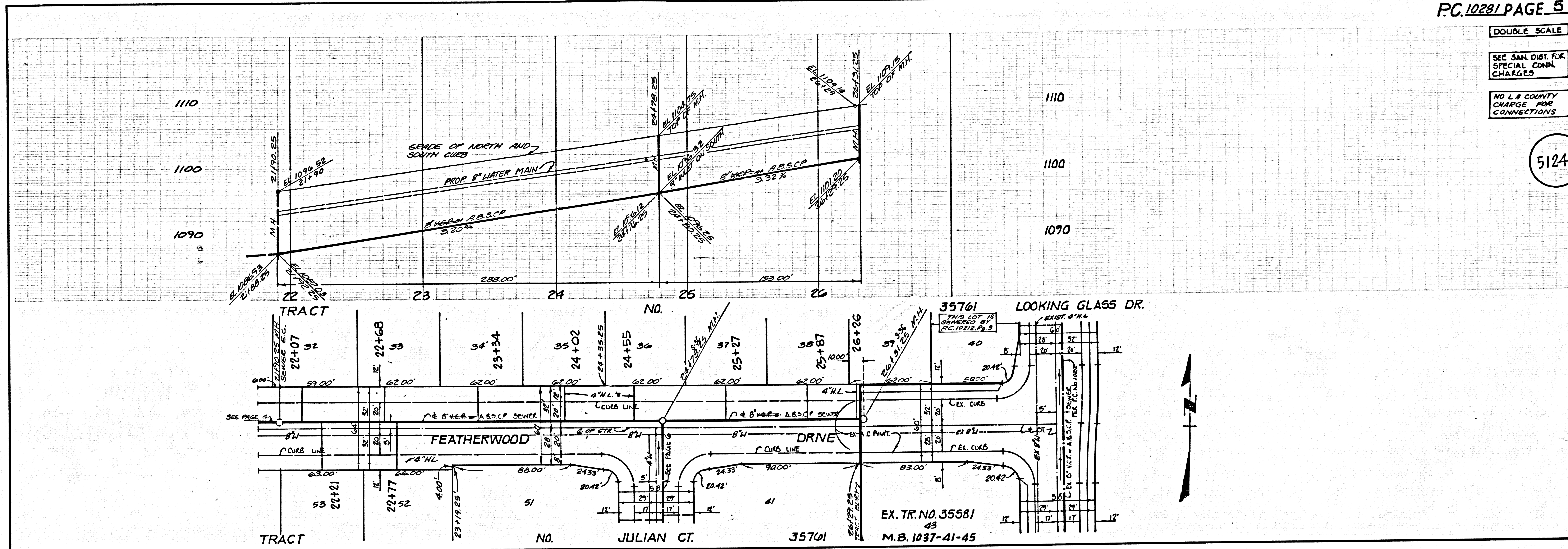
1850129 107325 ON TRACT

DOUBLE SCALE

SEE SAN. DIST. FOR SPECIAL CONN. CHARGES

NO L.A. COUNTY CHARGE FOR CONNECTIONS

51241

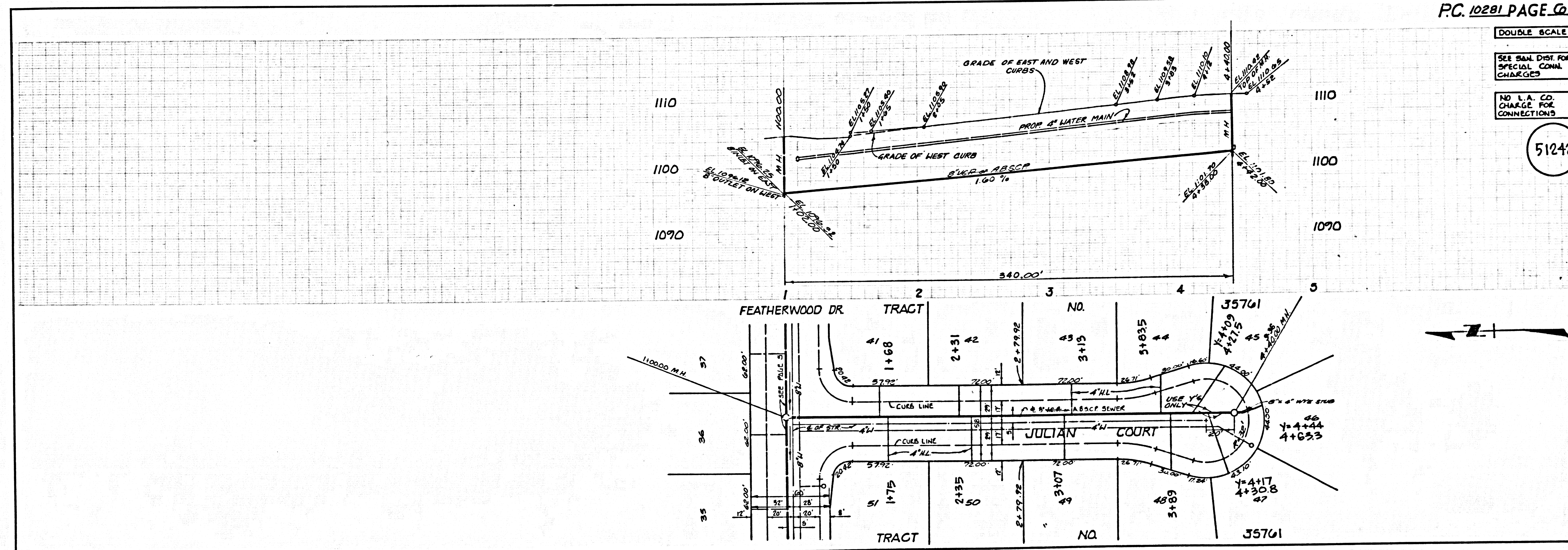


DOUBLE SCALE

SEE SAN. DIST. FOR SPECIAL CONN. CHARGES

NO L.A. CO. CHARGE FOR CONNECTIONS

51242



18501 29 10733 001 TRAPT