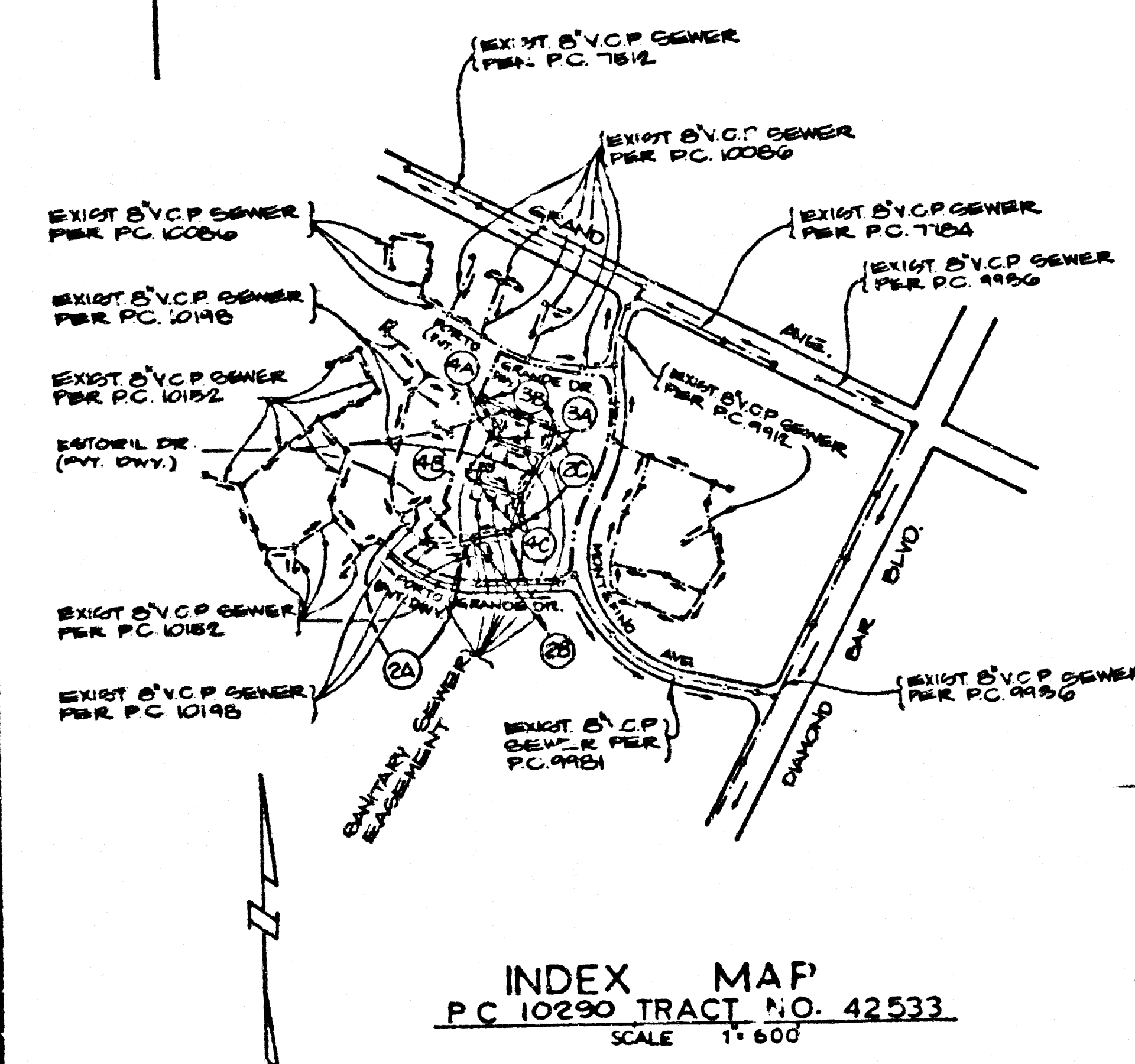


SANITARY SEWERS

TO BE CONSTRUCTED IN
TRACT NO. 42533
PRIVATE CONTRACT NO. 10290

W.S. 99 - C, 3
2 SHEETS, 4 PAGES
JULY, 1984
PREPARED IN THE OFFICES OF
MADOLE AND ASSOCIATES, INC.
1820 W. 11TH STREET SANTA ANA, CA 92701
REG. C. E. No. 1894

B.M. C.G. 3912 ELEV. 895.964
LIT IN EAST END C.B. 43 FT. N. 4
46 FT. W. & INT. GRAND AVENUE &
DIAMOND BAR BLVD. (M.D. E.M.C. 11)
OTTERBEIN QUAD. 1925



NOTE: NUMBERS IN CIRCLES INDICATE PAGE NUMBERS

CONSTRUCTION NOTES CONT'D

14. WYE BRANCHES ONLY MAY BE USED FOR CONNECTIONS TO MAINLINE SEWER. A B.S.C.P. IS USED.
15. ALL JOINTS BETWEEN CAST IRON PIPE & A.B.S.C.P. SHALL BE MADE WITH APPROVED FITTINGS.
16. FULL COMPLIANCE WITH PART IV OF THE SPECIAL PROVISIONS IS REQUIRED FOR THE INSTALLATION OF A.B.S. COMPOSITE PIPE.
17. MANHOLE WATER STOP Gaskets AND CLAMPS ARE REQUIRED FOR CONNECTION OF A.B.S. COMPOSITE PIPE TO MAINLINE STRUCTURES.
18. A.B.S. SOUL SHALL NOT BE USED FOR WYE AND NON WYE LATERAL CONNECTIONS TO A.B.S. COMPOSITE MAIN LINE SEWER PIPE.
19. A.B.S. COMPOSITE PIPE SHALL BE INSTALLED IN CONFORMANCE WITH THE TABLE IN SECTION C-3.1 OF PART IV OF THE SPECIAL PROVISIONS.
20. SENSITIVE DETECTION EQUIPMENT SHALL BE USED TO LOCATE PLUMB LINES OF CONDUIT LESS THAN 180\"/>

NO CONNECTION FOR THE DISPOSAL OF INDUSTRIAL WASTES SHALL BE MADE TO SEWERS SHOWN ON THESE DRAWINGS UNTIL A PERMIT FOR INDUSTRIAL WASTEWATER DISCHARGE HAS BEEN ISSUED BY THE SANITATION DISTRICTS FOR SAID CONNECTION.

BEFORE BREAKING INTO OR CONSTRUCTION ON A COUNTY SANITATION DISTRICT SEWER AND PRIOR TO FINAL ACCEPTANCE OF THE PROJECT, SANITATION DISTRICT INSPECTOR SHALL BE NOTIFIED BY PHONE 818 - 962-8606 SO THAT REQUIRED INSPECTION CAN BE MADE.

REVISION NO. 2 DATE 3-6-87
REVISED BUILDING FOR UNITS 425-428 & 462-467. REVISED SEWER LATERAL LOCATIONS ON PAGES 3A, 4A, 4B & 4C.

APPROVED: *Sanjiv G. Patel* 3-11-87
DEPT. OF PUBLIC WORKS

REVISION NO. 1 DATE 3-17-86

REVISED SEWER TO CONFORM TO REVISED BUILDING LOCATIONS. REVISED LENGTH OF SEWER OF 4A AND 4B, REVISED LOCATION OF SEWER LATERALS.

APPROVED: *Sanjiv G. Patel* 7-22-86
DEPT. OF PUBLIC WORKS

NOTE: ISSUE HOUSE CONNECTION PERMITS FOR UNITS 395-400 AND UNITS 436-438 FROM P.C. 10198, PAGE 2A.

GENERAL NOTES:

1. ELEVATIONS ARE IN FEET ABOVE U.S.C. & G.S. SEA LEVEL DATUM OF 1929.
2. NO REVISIONS SHALL BE MADE IN THESE PLANS WITHOUT THE APPROVAL OF THE COUNTY ENGINEER.
3. NO REPRESENTATIVE OF THE COUNTY ENGINEER WILL SURVEY OR LAY OUT ANY PORTION OF THE WORK.
4. GRADES TO WHICH THIS IMPROVEMENT IS TO BE CONSTRUCTED ARE SHOWN ON PLANS AND PROFILES. GRADE POINTS FOR TOP OF CURBS, CENTER LINE OF STREETS, OR CENTER LINE OF ALLEYS ARE SHOWN BY CIRCLES ON PROFILES AT ALL POINTS BETWEEN DESIGNATED POINTS THE GRADE SHALL BE ESTABLISHED SO AS TO CONFORM TO A STRAIGHT LINE DRAWN BETWEEN SAID DESIGNATED POINTS.
5. THE PRIVATE ENGINEER SHALL FURNISH THE COUNTY ENGINEER WITH GRADE SHEETS AND STATIONING FOR ALL HOUSE LATERALS AND 12\"/>
6. THE PRIVATE ENGINEER SHALL FURNISH THE HOUSE LATERAL DEPTH AT THE PROPERTY LINE BELOW THE TOP OF CURB ELEVATION FOR EACH HOUSE LATERAL ON THE GRADE SHEET.
7. BEFORE WORK CAN BE STARTED THE CONTRACTOR MUST OBTAIN A PERMIT TO EXCAVATE IN COUNTY STREETS FROM THE L.A. COUNTY ROAD DEPT. DISTRICT OFFICE NO. 1 AND PAY A FEE TO THE COUNTY ENGINEER, 500 S. VERMONT AVENUE, LOS ANGELES, CA 90005 TO COVER THE COST OF CONSTRUCTION INSPECTION AND RECORD PLANS.
8. IF WORK IS TO BE DONE IN A STATE HIGHWAY, A PERMIT MUST BE OBTAINED FROM THE STATE OF CALIFORNIA, DIVISION OF HIGHWAYS, 120 SOUTH SPRING STREET, LOS ANGELES, CALIFORNIA.
9. APPROVAL OF THIS PLAN BY THE COUNTY OF LOS ANGELES DOES NOT CONSTITUTE A REPRESENTATION AS TO THE ACCURACY OF THE LOCATION OF OR THE EXISTENCE OR NON-EXISTENCE OF ANY UNDERGROUND UTILITY PIPE, OR STRUCTURE WITHIN THE LIMITS OF THIS PROJECT. THIS NOTE APPLIES TO ALL PHASES.
10. REFER TO SECTION 7.04.1 OF THE STANDARD SPECIFICATIONS, REGARDING SAFETY ORDERS.
11. PRIOR TO THE ISSUANCE OF THE REQUIRED SEWER CONSTRUCTION PERMIT, THE CONTRACTOR SHALL OBTAIN AND FILE WITH THE COUNTY ENGINEER COPIES OF A PERMIT TO EXCAVATE IN COUNTY STREETS FROM THE LOS ANGELES COUNTY ROAD DEPARTMENT. COUNTY ENGINEER COPIES OF A PERMIT TO EXCAVATE IN COUNTY STREETS FROM THE CALIFORNIA DIVISION OF INDUSTRIAL SAFETY AND A CERTIFICATE A PERMIT FOR EXCAVATIONS AND TRENCHES FROM THE STATE OF CALIFORNIA, DIVISION OF INDUSTRIAL SAFETY AND A CERTIFICATE OF WORKERS COMPENSATION INSURANCE WITH THE DEPARTMENT OF COUNTY ENGINEER, 500 SOUTH VERMONT, RM. 408, LOS ANGELES, CALIFORNIA 90005, NAMED AS THE CERTIFICATE HOLDER TO BE NOTIFIED 30 DAYS PRIOR TO CANCELLATION OF POLICY.

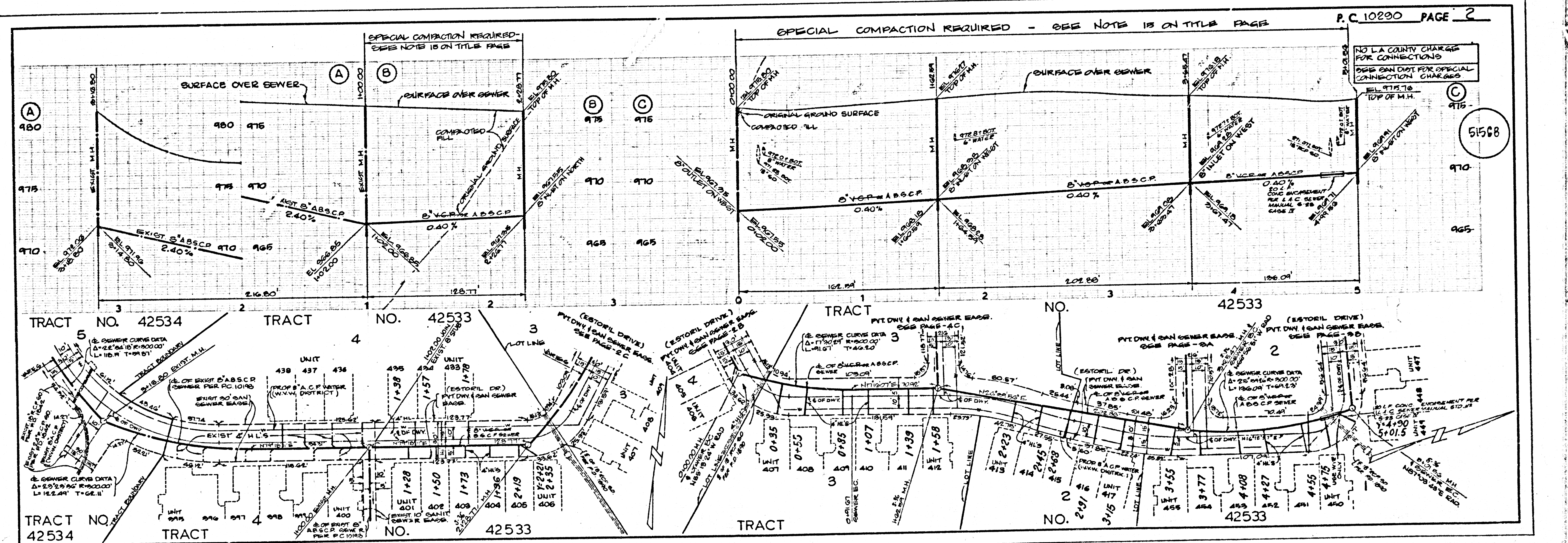
CONSTRUCTION NOTES:

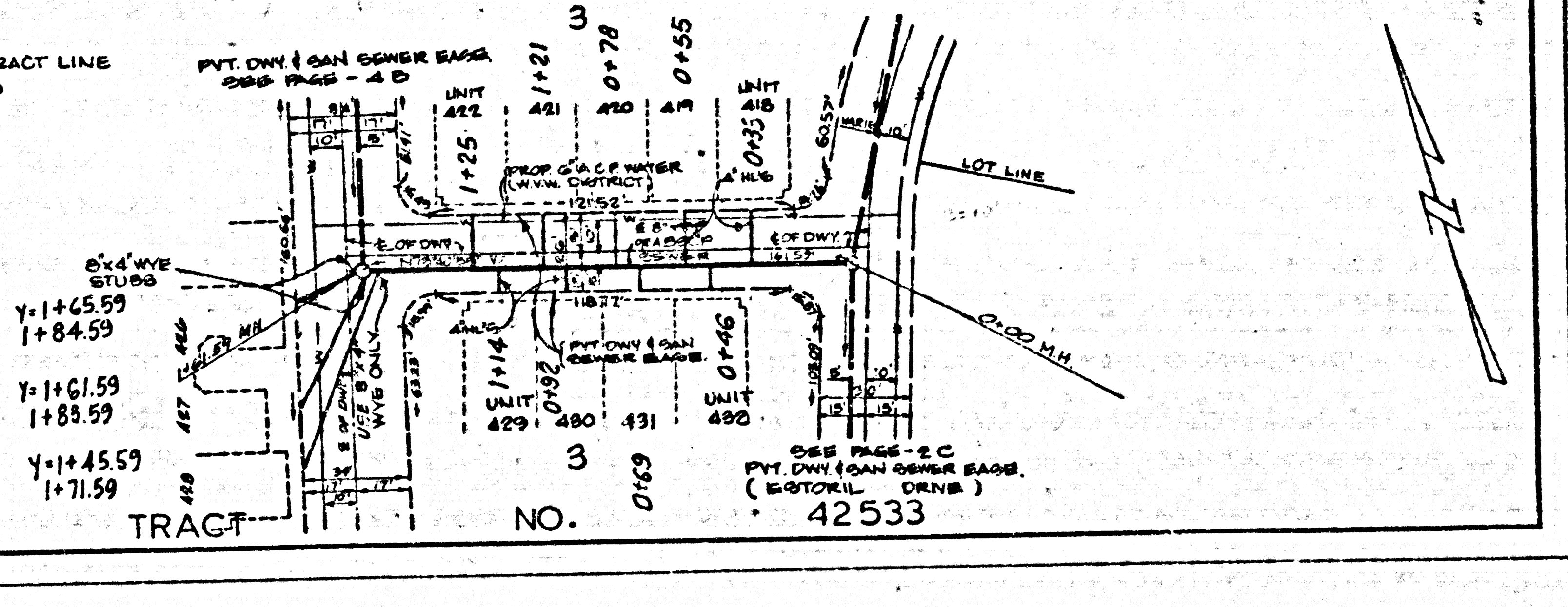
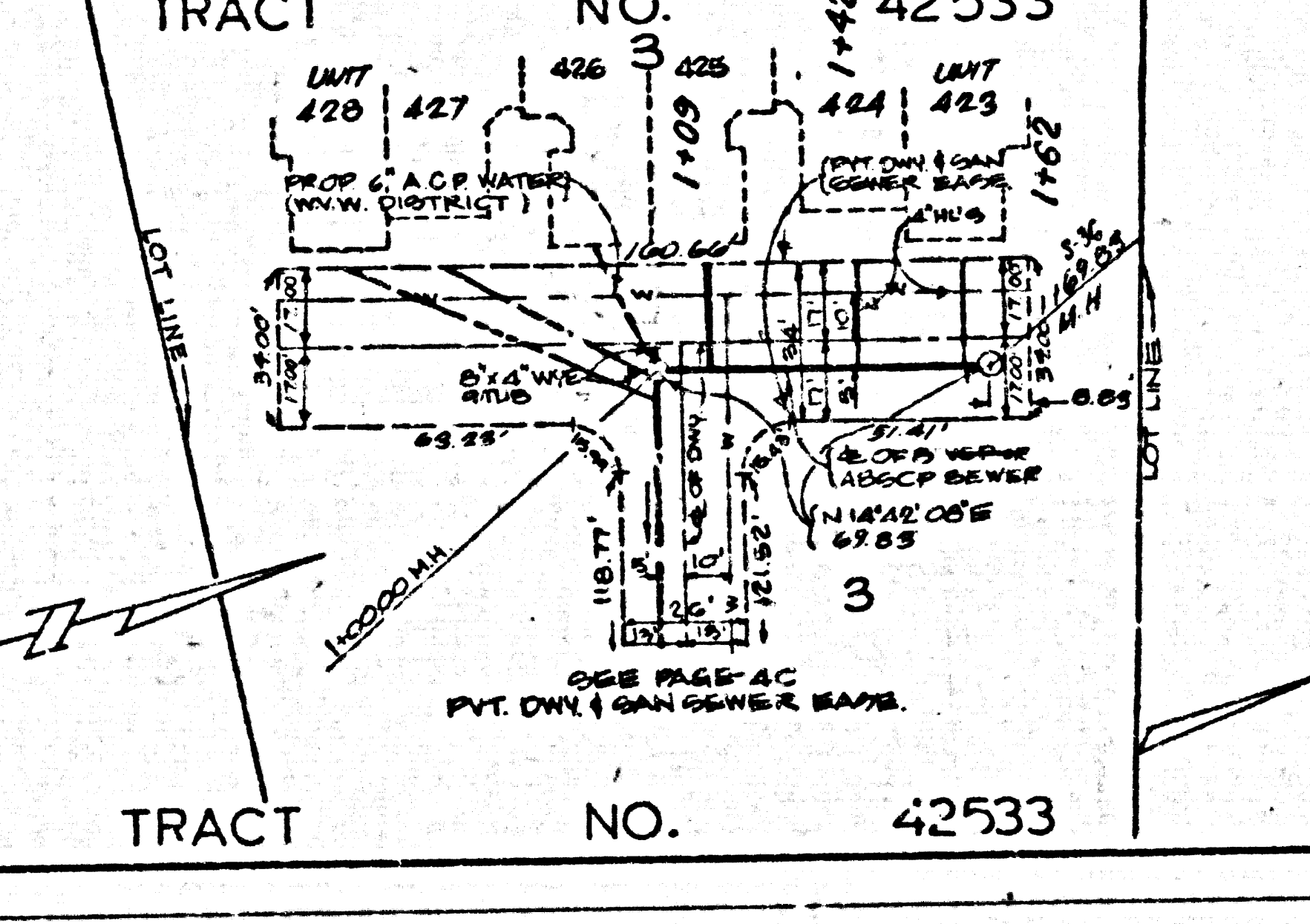
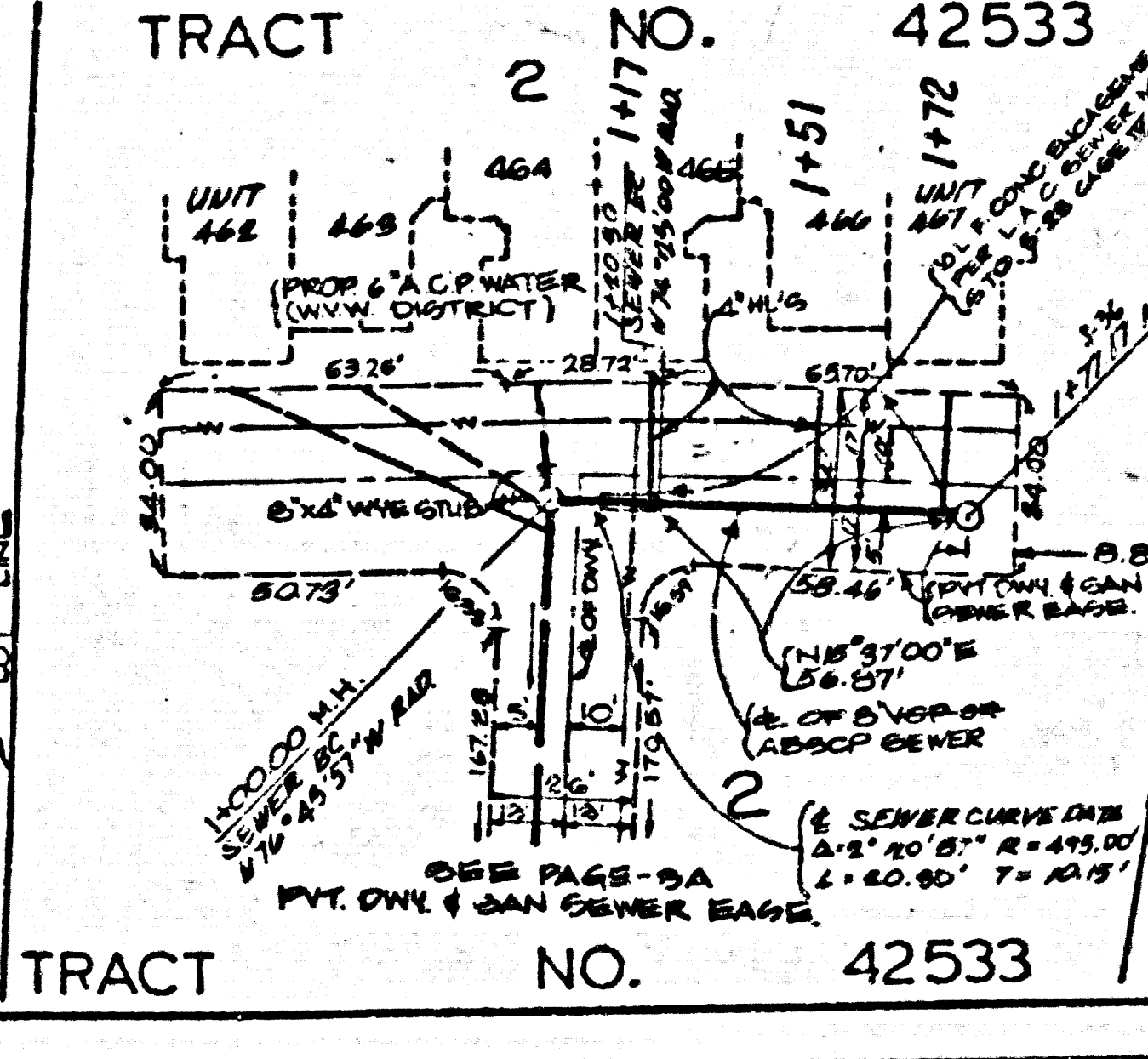
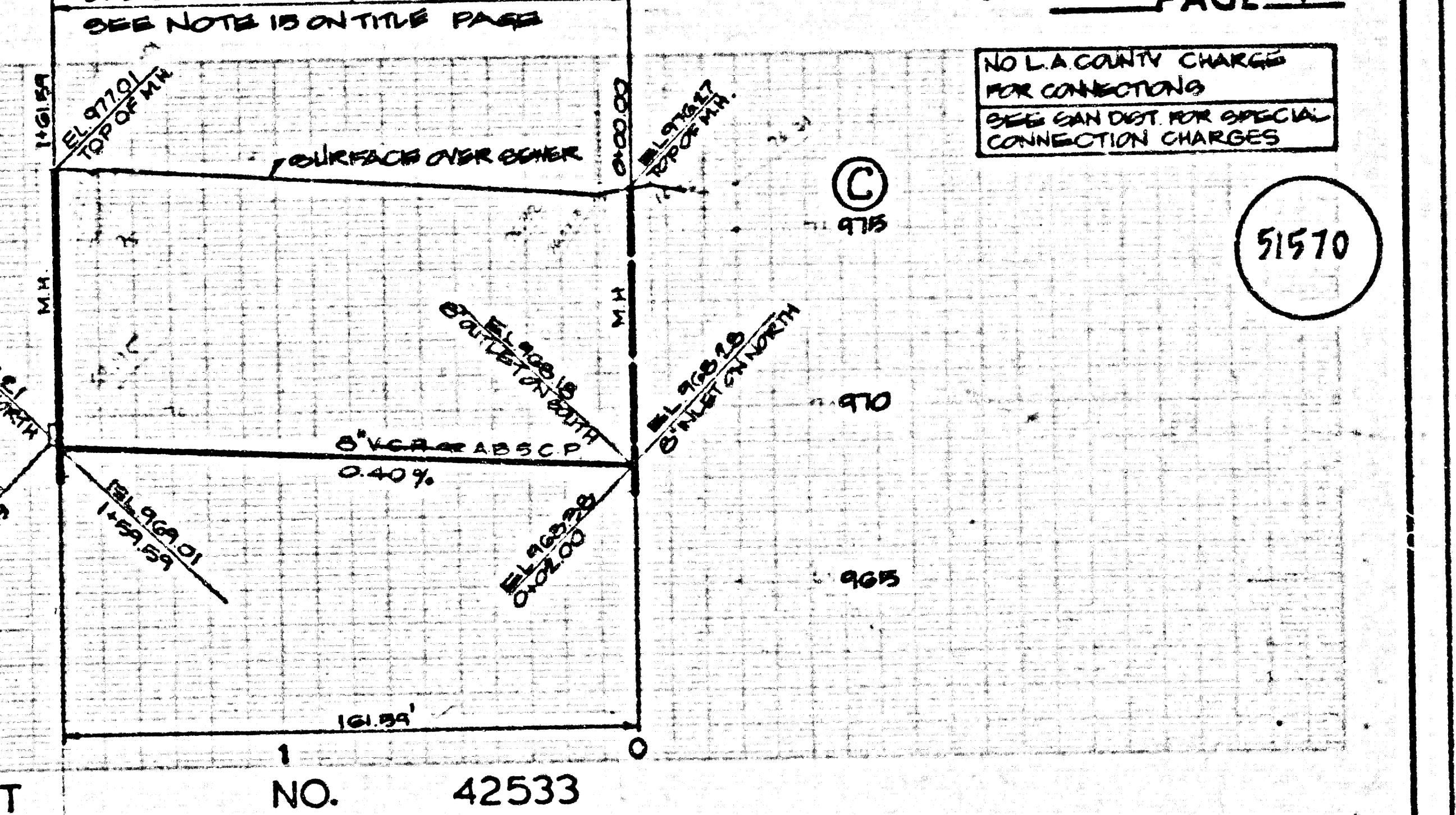
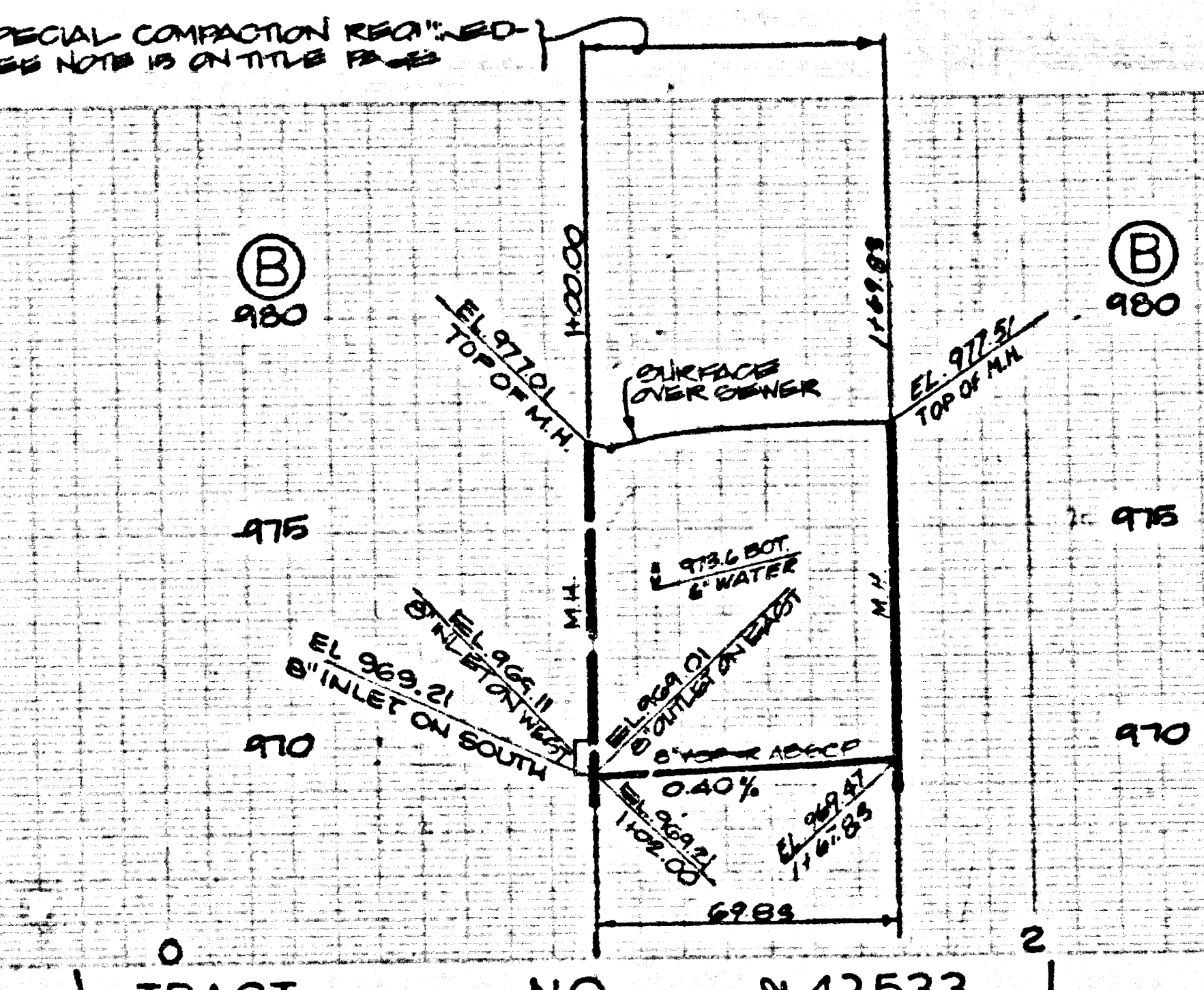
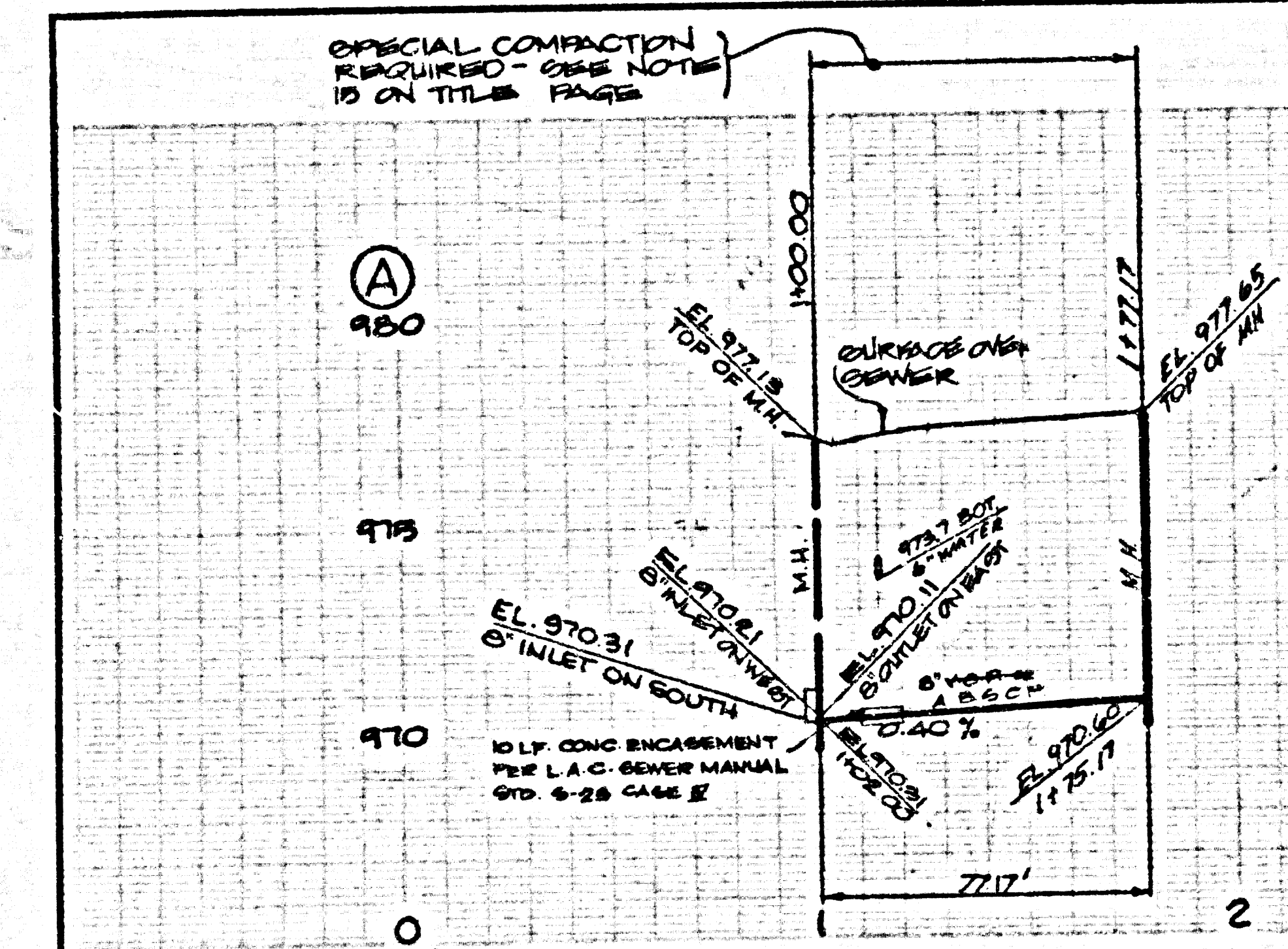
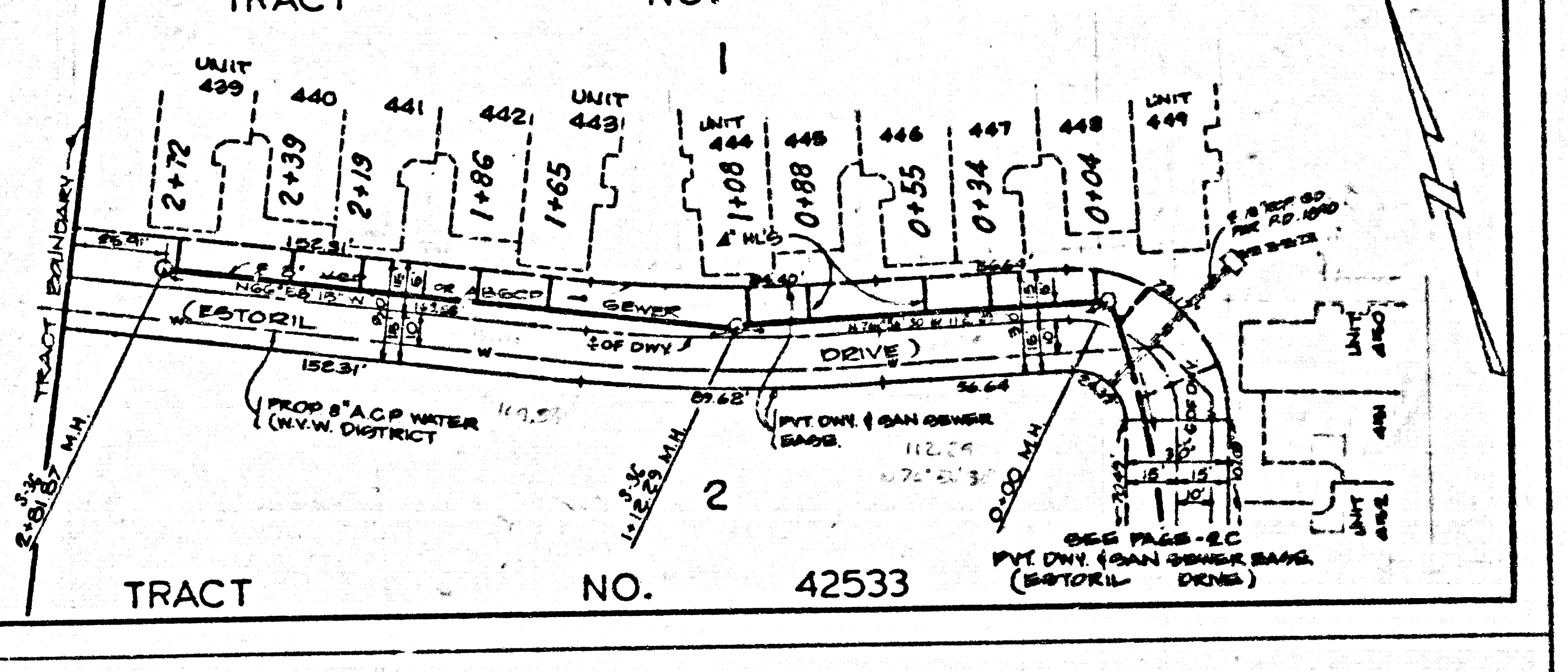
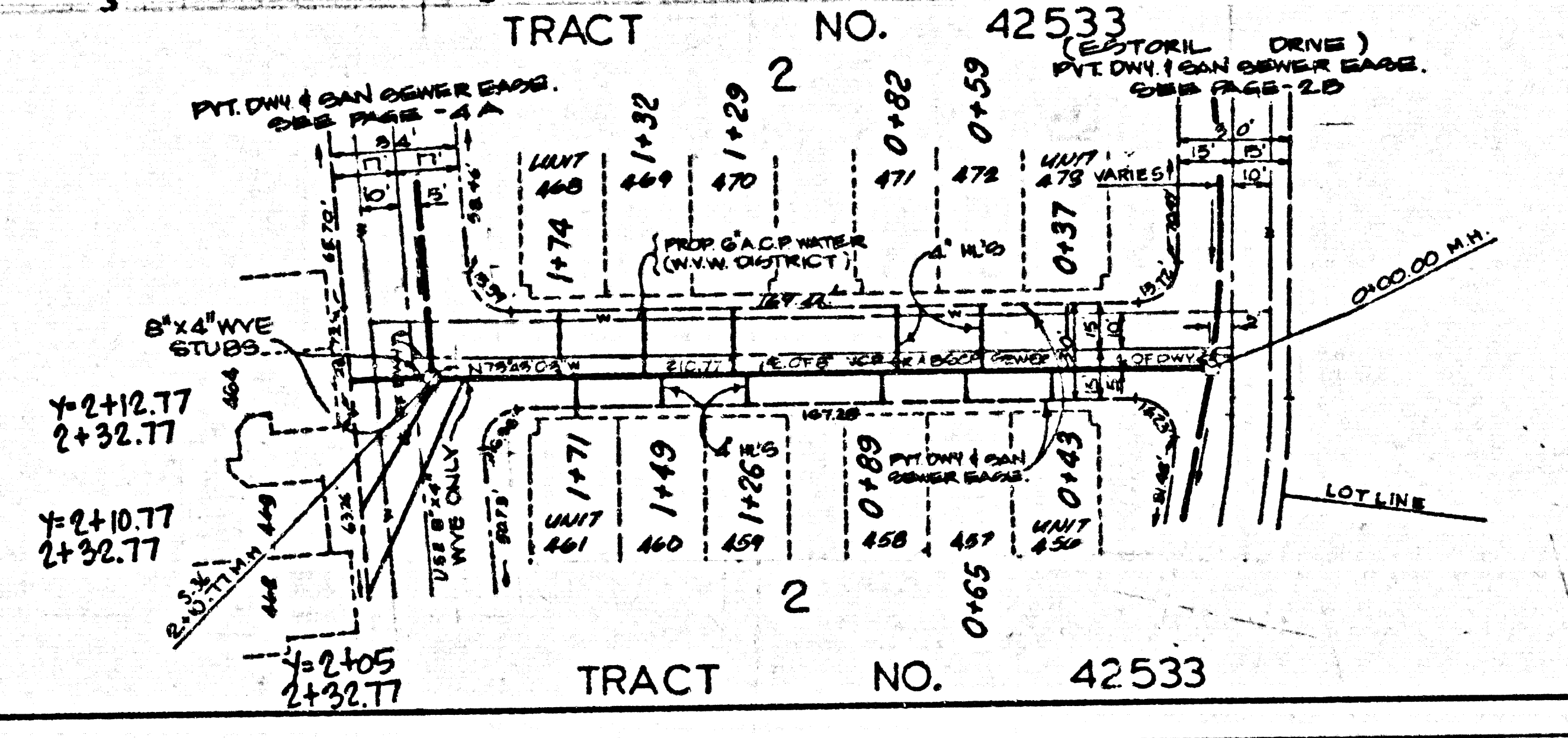
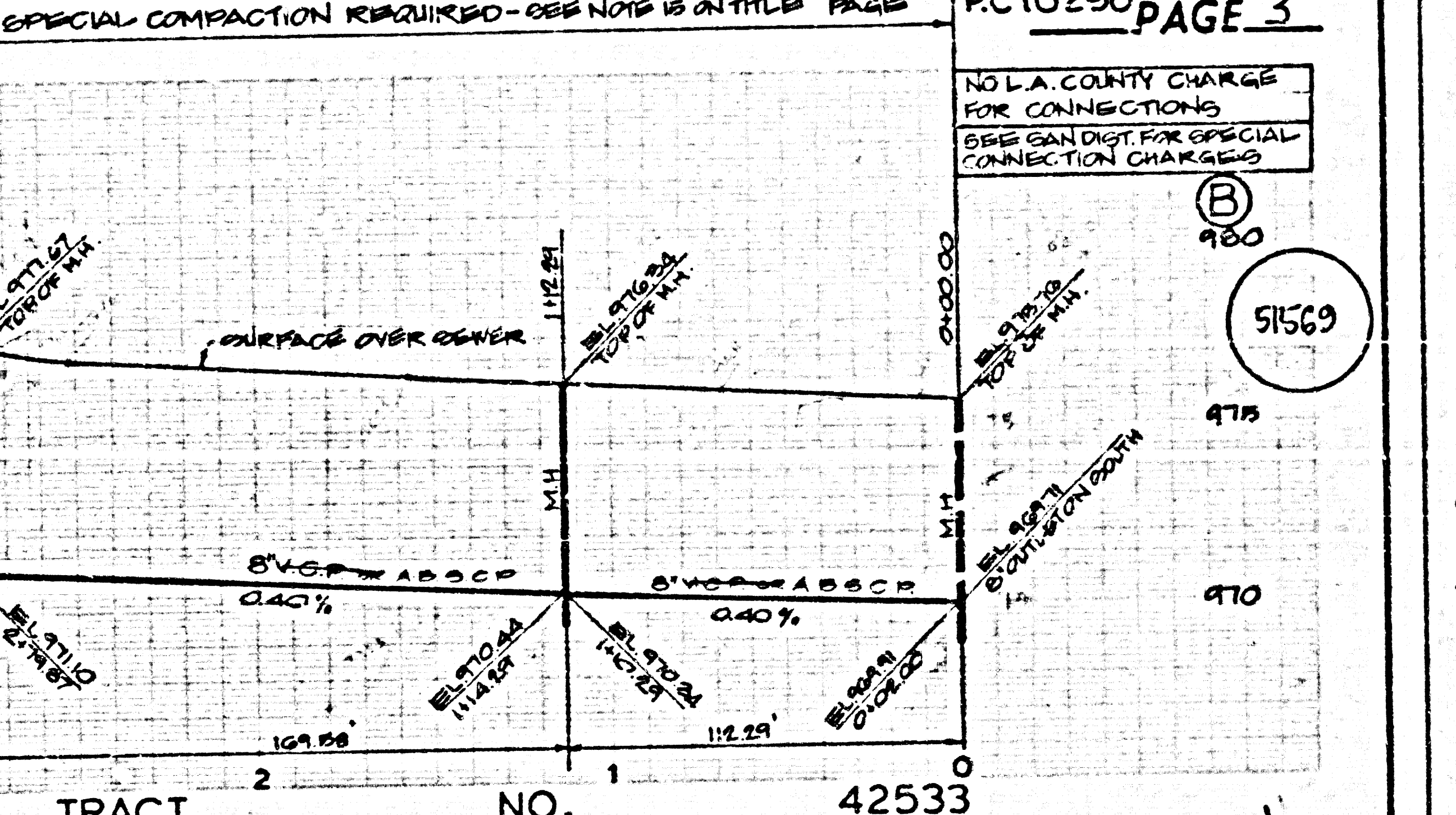
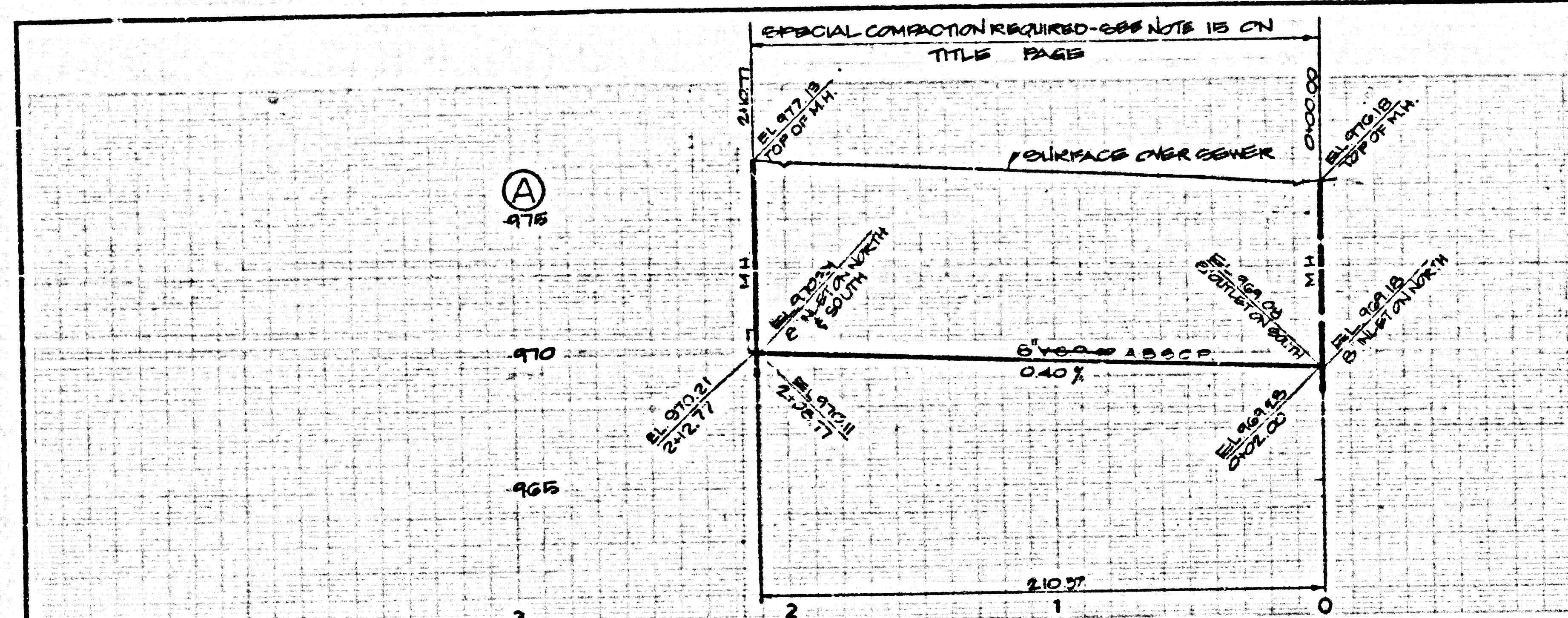
1. WORK SHALL BE CONSTRUCTED ACCORDING TO THE STANDARD SPECIFICATIONS FOR PUBLIC WORKS CONSTRUCTION (1982 EDITION) WITH SUPPLEMENTS AND COUNTY ENGINEER SPECIAL PROVISIONS FOR THE CONSTRUCTION OF SANITARY SEWERS DATED SEPTEMBER 21, 1970 AND SHALL BE PROSECUTED ONLY IN THE PRESENCE OF THE COUNTY ENGINEER.
2. THE CONTRACTOR SHALL NOTIFY THE ENVIRONMENTAL DEVELOPMENT DIVISION BY TELEPHONE 728-1158, AT LEAST TWENTY-FOUR HOURS BEFORE STARTING ANY WORK UNDER THIS CONTRACT.
3. HOUSE LATERALS TO BE CONSTRUCTED WITH 1 1/2\"/>
4. WYE OR TEE BRANCHES MAY BE USED FOR CONNECTIONS TO MAINLINE SEWERS EXCEPT AS NOTED.
5. ALL STRUCTURES SHALL BE EITHER BRICK MANHOLES PER S-3 OR PRECAST CONCRETE MANHOLES PER S-38, EXCEPT AS NOTED.
6. PROVIDE STAKES ON THE PROPERTY LINE OR PROPERTY LINES PRODUCED AT RIGHT ANGLES TO THE SEWER LINE AT THE CENTER LINE OF EACH MANHOLE.
7. MANHOLE TOPS IN UNIMPROVED RIGHTS OF WAY TO BE SIX INCHES ABOVE FINISHED GRADE.
8. VITRIFIED CLAY PIPE JOINTS SHALL BE TYPE "D" OR "A" PER STANDARD SPECIFICATIONS SECTION 308.2.
9. IF A POWER POLE IS WITHIN THREE FEET OF THE SEWER, THE SEWER SHALL BE ENCASED PER S-22 CASE H, TWO FEET ON EACH SIDE FROM THE POINT OF INTERFERENCE.
10. IF DURING THE COURSE OF CONSTRUCTION IT IS DETERMINED THAT THERE IS LESS THAN FOUR FEET OF COVER OVER THE TOP OF A MAIN LINE OR HOUSE LATERAL SEWER WHICH IS NOT INDICATED ON THE PLANS, THE PIPE SHALL BE ENCASED PER S-22 CASE F UNLESS OTHERWISE APPROVED BY THE COUNTY ENGINEER.
11. ALL JOINTS BETWEEN CAST IRON PIPE AND VITRIFIED CLAY PIPE SHALL BE MADE WITH A RUBBER SLEEVE JOINT, TYPE "C" OR "D", WITH BUSHING IF NECESSARY PER STANDARD SPECIFICATIONS SECTION 308.1.
12. SEWERS TO BE TESTED FOR LEAKAGE PER SECTION 308.1.4 OF THE STANDARD SPECIFICATIONS AND SPECIAL PROVISIONS.
13. REPAIR ALL TRENCHES WITHIN PAVED AREAS TO MEET L.A. COUNTY ROAD DEPT. OR CALIFORNIA STATE HIGHWAY REQUIREMENTS IN ACCORDANCE WITH PERMITS.
14. FULL COMPLIANCE WITH SECTION 306.1.3 OF THE SPECIAL PROVISIONS WILL BE REQUIRED FOR BACKFILL IN STREETS. CERTIFICATION OF BACKFILL COMPACTION AND SAND EQUIVALENTS IF A QUALIFIED REGISTERED TESTING LABORATORY SHALL BE PROVIDED BY THE PERMITTEE PRIOR TO THE ISSUANCE OF A "P" PERMITS OF PARTIAL ACCEPTANCE.
15. SPECIAL BACKFILL IN EASEMENT CONSTRUCTION (A), BACKFILL THE VEH AND REPLACE OTHER EARTH SO AS TO ACHIEVE THE NATURAL OR FINISHED GRADES AND SLOPES SHOWN ON THE GRADING PLAN APPROVED FOR THIS DEVELOPMENT BY THE BUILDING AND SAFETY DIVISION. IF ALL BACKFILL AND EARTH REPLACEMENT SHALL BE COMPACTED TO A MINIMUM OF 90% OF MAXIMUM DENSITY PER ASTM D 1557 METHOD OF TEST D9957 AS MODIFIED. ACCEPTABLE CERTIFICATION OF SUCH COMPACTION SHALL BE SUBMITTED TO THE ENVIRONMENTAL DEVELOPMENT DIVISION.

THE FOLLOWING LATEST REVISED STANDARD PLANS ON FILE IN THE OFFICE OF THE COUNTY ENGINEER SHALL APPLY TO THE CONSTRUCTION OF THIS PROJECT.

LEGEND	51
MINIMUM PUBLIC SAFETY REQUIREMENTS	51
BRICK MANHOLES	54
STANDARD MANHOLE TOP	57
SEEDING FOR SEWER PIPE	58
CASTING AND ENCASEMENT	58
WYE OR TEE SUPPORT	58
MANHOLE BRICK MORTAR	58
LOCKING MANHOLE FRAME AND COVER	58
NON-REINFORCED PRECAST CONCRETE MANHOLE	58
SEEDING REQUIREMENTS FOR PLASTIC PIPE	58-A

COUNTY OF LOS ANGELES, CALIFORNIA
STEPHEN J. KOONCE, COUNTY ENGINEER
CHARLES W. CADDOY, CHIEF ENGINEER
APPROVED: *Sanjiv G. Patel* 10/1/84
SAN DIMAS REGIONAL ENGINEER
CHECKED: *Sanjiv G. Patel* 11-11-84
REG. CE. NO. 22134
SAN DIMAS BLDG. DIST. 10.00





TRACT NO. 42533 ON TRACT NO. 10530