

SANITARY SEWERS

TO BE CONSTRUCTED IN
ALTA KNOLL DRIVE
(PRIVATE R/W)

PRIVATE CONTRACT NO. 10296

184: F4
W.S. 62

2 SHEETS, 4 PAGES

50933

SCALE: VERT. 1"=4' HORIZ. 1"=40'
DATE: January 23, 1984

PREPARED IN THE OFFICES OF
J.M. WILSON, CIVIL ENGINEER

387 N. SECOND AVE.
SUNLAND, CALIF. 91786 (714) 985-2885

By: *Jurmel M. Wilson*
REG. C. E. No. 17789

THE FOLLOWING LATEST REVISED STANDARD PLANS ON FILE IN THE OFFICE OF THE *Dep. of Public Works* SHALL APPLY IN THE CONSTRUCTION OF THIS PROJECT.

LEGEND	5-1
MINIMUM PUBLIC SAFETY REQUIREMENTS	5-2
BRICK MANHOLES	5-3
STANDARD MANHOLE SET	5-17
BEDDING FOR SEWER PIPE	5-21
CRADLING AND INCASMENT	5-23
WYE OR TEE SUPPORT	5-28
ALLOWABLE TRENCH WIDTHS	5-28
LOCKING MANHOLE FRAMES AND COVERS	5-28
NON-BRICKWORK PRECAST CONCRETE MANHOLE	5-28

COUNTY OF LOS ANGELES, CALIFORNIA

Thomas A. Tidemanson, Director of Public Works
Charles M. Corry, CHIEF ENGINEER
CO. SAN. DIST. NO. 26

APPROVED: *Ralph D. ...* DATE: 4-26-85
APPROVED: *Alan ...* DATE: 4-26-85
J.C. OFFICE ENGINEER

CHECKED: *...* DATE: 4-28-85
REG. C. E. NO. 16481

San Joaquin BLDG. DIST. 2-2

DOUBLE SCALE

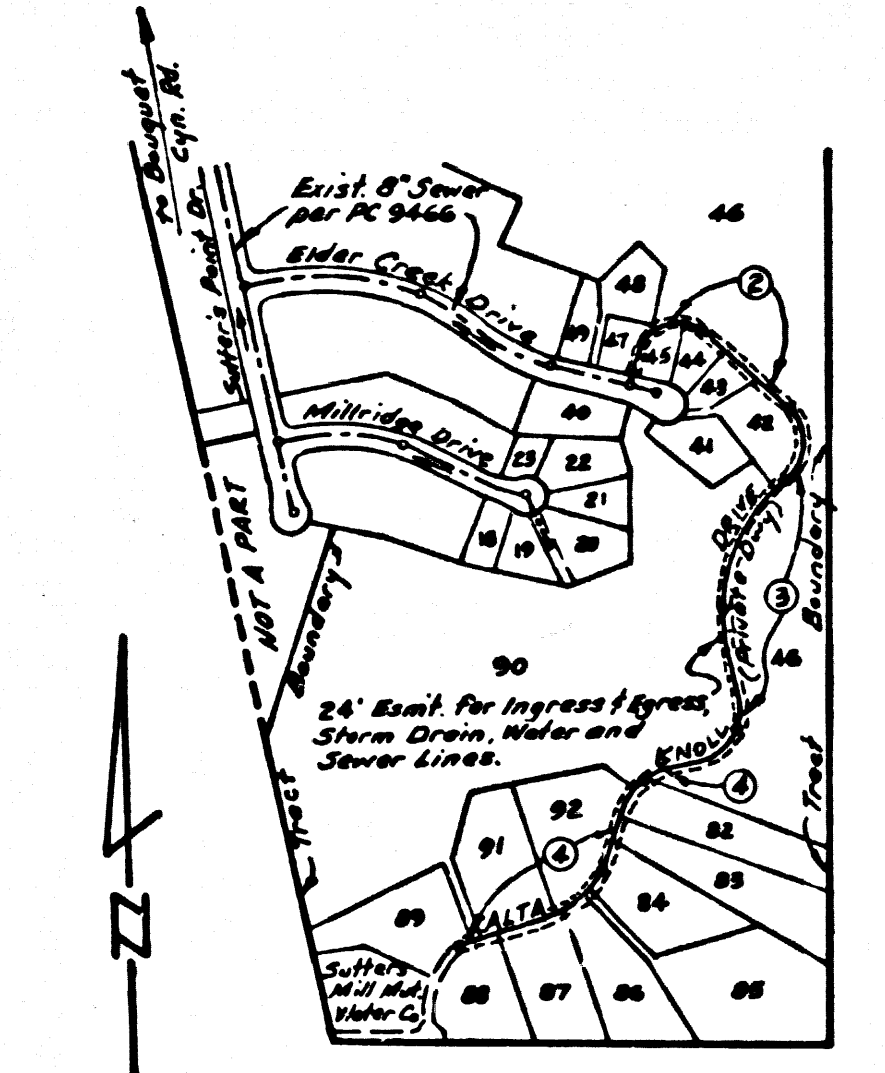
GENERAL NOTES (CONT.)
12. ALL REFERENCES ON THIS PLAN TO THE COUNTY ENGINEER, THE ROAD DEPARTMENT, OR THE FLOOD CONTROL DISTRICT SHALL APPLY TO THOSE APPROPRIATE SECTIONS OF THE DEPARTMENT OF PUBLIC WORKS.

NO CONNECTION FOR THE DISPOSAL OF INDUSTRIAL WASTES SHALL BE MADE TO SEWERS SHOWN ON THESE DRAWINGS UNTIL A PERMIT FOR INDUSTRIAL WASTEWATER DISCHARGE HAS BEEN ISSUED BY THE SANITATION DISTRICTS FOR SAID CONNECTION.

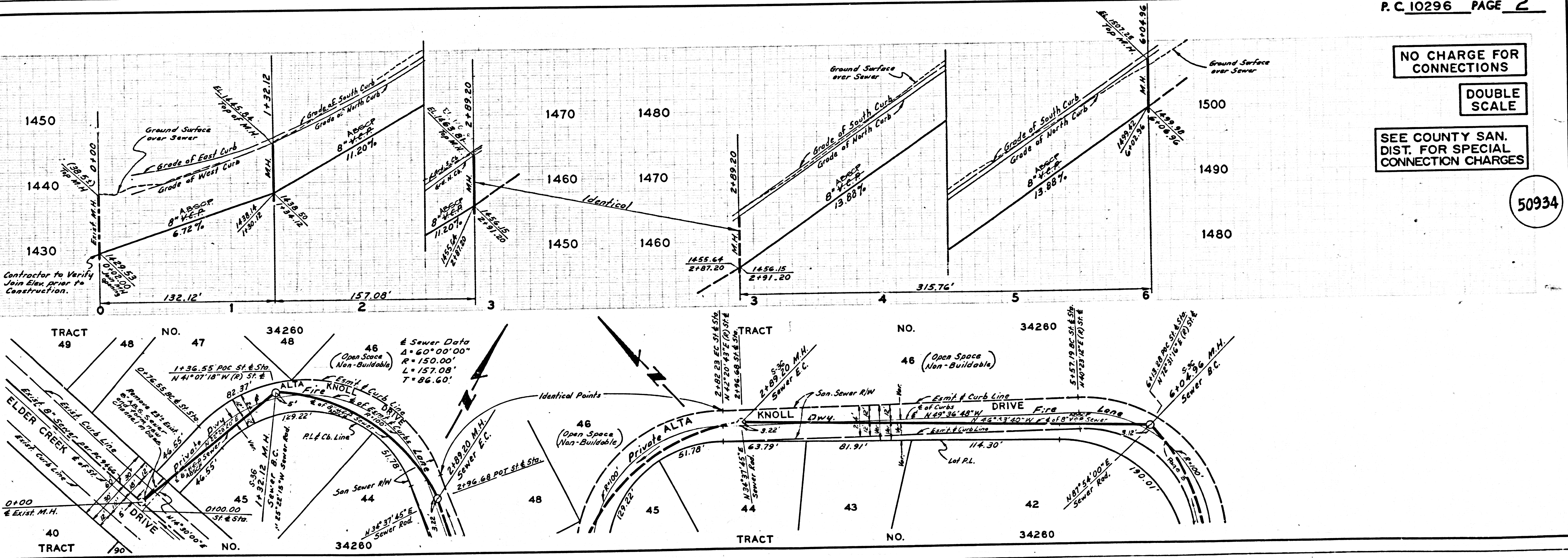
BEFORE BREAKING INTO OR CONSTRUCTION ON A COUNTY SANITATION DISTRICT SEWER AND PRIOR TO FINAL ACCEPTANCE OF THE PROJECT, SANITATION DISTRICT INSPECTOR SHALL BE NOTIFIED BY PHONE 818 - 962-8005 SO THAT REQUIRED INSPECTION CAN BE MADE.

NOTE:
NO CONNECTIONS TO LOT 46 ARE TO BE MADE UNTIL ANNEX. FEES ARE PAID TO C.S.D. NO. 26.

B.M. BL 1740 ELEV. 1305.666
U.S.G.S. Mon. 3 in. up. 20 Ft S.E. of
Bouquet Cyn. Rd. under Trans. line 3.01 mile
N.W. Susan Bath Way. West. N-2 1929,
2" x 3" P. 1929 & P. 1930
Newhall QUAD. 19 72.



INDEX MAP
P.C. 10296 - ALTA KNOLL DR.



NO CHARGE FOR CONNECTIONS

DOUBLE SCALE

SEE COUNTY SAN. DIST. FOR SPECIAL CONNECTION CHARGES

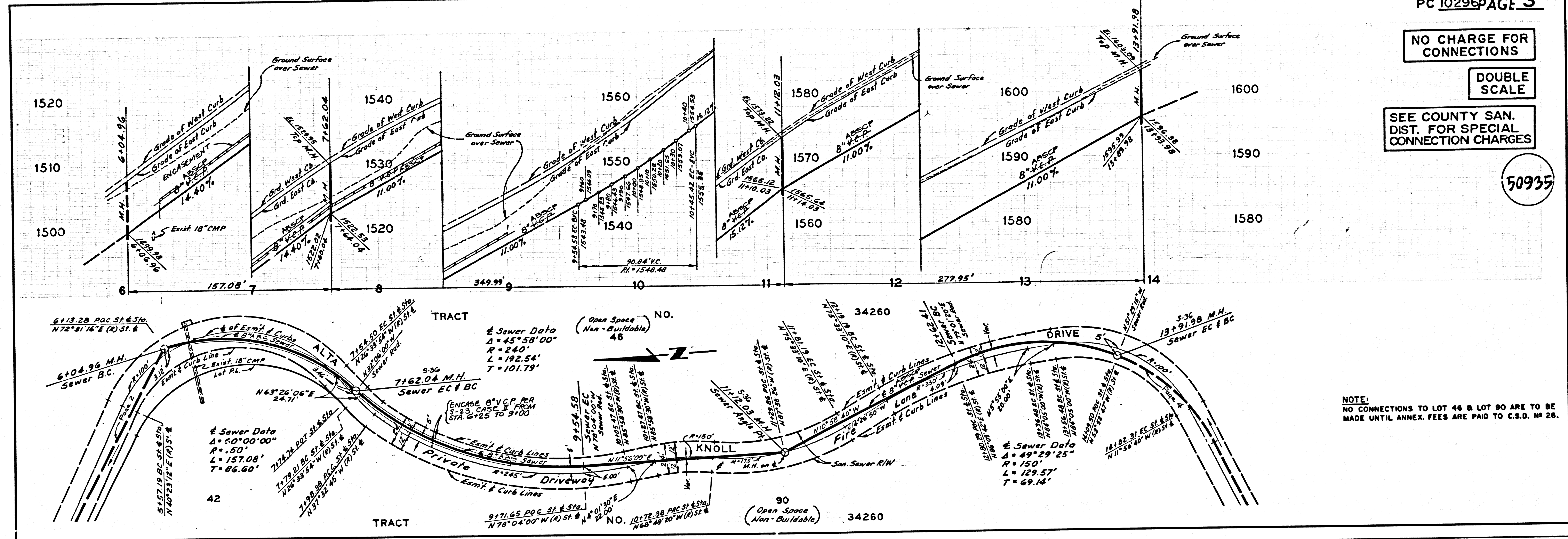
50934

NO CHARGE FOR CONNECTIONS

DOUBLE SCALE

SEE COUNTY SAN. DIST. FOR SPECIAL CONNECTION CHARGES

50935



NOTE: NO CONNECTIONS TO LOT 46 & LOT 90 ARE TO BE MADE UNTIL ANNEX. FEES ARE PAID TO C.S.D. # 26.

SEE COUNTY SAN. DIST. FOR SPECIAL CONNECTION CHARGES

NO CHARGE FOR CONNECTIONS

DOUBLE SCALE

50936

