

SANITARY SEWERS

TO BE CONSTRUCTED IN
SEWER IN R/W EAST OF N. CALETA RD
NORTH OF SILVER CREEK RD.

PRIVATE CONTRACT NO. 10298
C-242
W.S. 90

50980

1 SHEETS, 2 PAGES

SCALE: VERT. 1"=5' HORIZ. 1"=50'

AUGUST, 1984
PREPARED IN THE OFFICES OF
VALCON, INC.
72 MOODY COURT, THOUSAND OAKS, CALIF. 91320
BY: John F. Heck, III
REG. C. E. No. 12264

LEGEND	0.1
MINIMUM PUBLIC SAFETY ENCLOSURE	0.2
ANCE MANHOLE	0.3
STANDARD MANHOLE SET	0.4
BEDDING FOR SEWER PIPE	0.5
CHASING AND BRICKWORK	0.6
WIRE OR SURFACE	0.7
ALLOWABLE TRIMMINGS	0.8
LOCKING MANHOLE FRAMES AND COVERS	0.9
NON-REINFORCED PRECAST CONCRETE MANHOLES	1.0

IN ADDITION THE FOLLOWING L.V.M.W.D. STANDARDS SHALL APPLY TO THE CONSTRUCTION OF THIS SEWER:
STD. MANHOLE

COUNTY OF LOS ANGELES, CALIFORNIA

STEPHEN J. KOONCE, COUNTY ENGINEER LAS VIRGENES MUNICIPAL WATER DISTRICT

APPROVED: [Signature] DATE: 11-7-84

CHECKED: [Signature] DATE: 11/6/84

CALABASAS BLDG. DIST. 21

B.M. 7604 ELEV. 807.840
C.S.B.M. MON. 6 IN UP 20 FT E. CL
CORNELL RD. AND SILVER CREEK RD.
SOFT N. AND EAST W. 5/8 INT. MKD.
2 IN 1/2 MARK. ST. 1/2
QUAD. 19 80

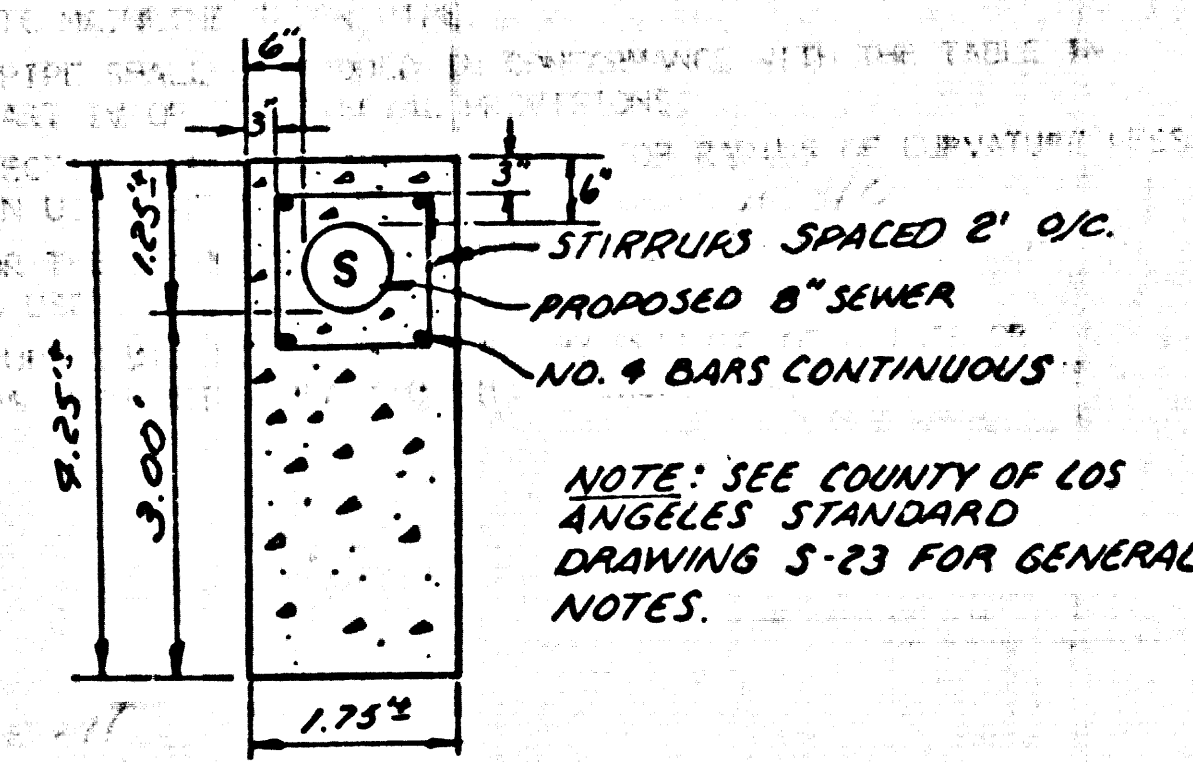
CONTRACTOR'S NOTE:
THE EXISTENCE AND LOCATION OF ANY UNDERGROUND UTILITY PIPES OR STRUCTURE SHOWN ON THESE PLANS ARE OBTAINED BY A SEARCH OF AVAILABLE RECORDS. THE CONTRACTOR IS RESPONSIBLE TO TAKE PRECAUTIONARY MEASURES TO PROTECT UTILITY LINES SHOWN AND OTHER LINES NOT OF RECORD OR NOT SHOWN ON THESE PLANS.

NO CONNECTION FOR THE DISPOSAL OF INDUSTRIAL WASTES SHALL BE MADE TO SEWERS SHOWN ON THESE DRAWINGS UNTIL A PERMIT FOR INDUSTRIAL WASTEWATER DISCHARGE HAS BEEN ISSUED BY THE SANITATION DISTRICTS FOR SAID CONNECTION.

BEFORE BREAKING INTO OR CONSTRUCTION ON THE LAS VIRGENES MUNICIPAL WATER DIST. SEWER AND PRIOR TO FINAL ACCEPTANCE OF THE PROJECT, L.V.M.W.D. DISTRICT INSPECTOR SHALL BE NOTIFIED BY PHONE 873-4978 SO THAT REQUIRED INSPECTION CAN BE MADE.

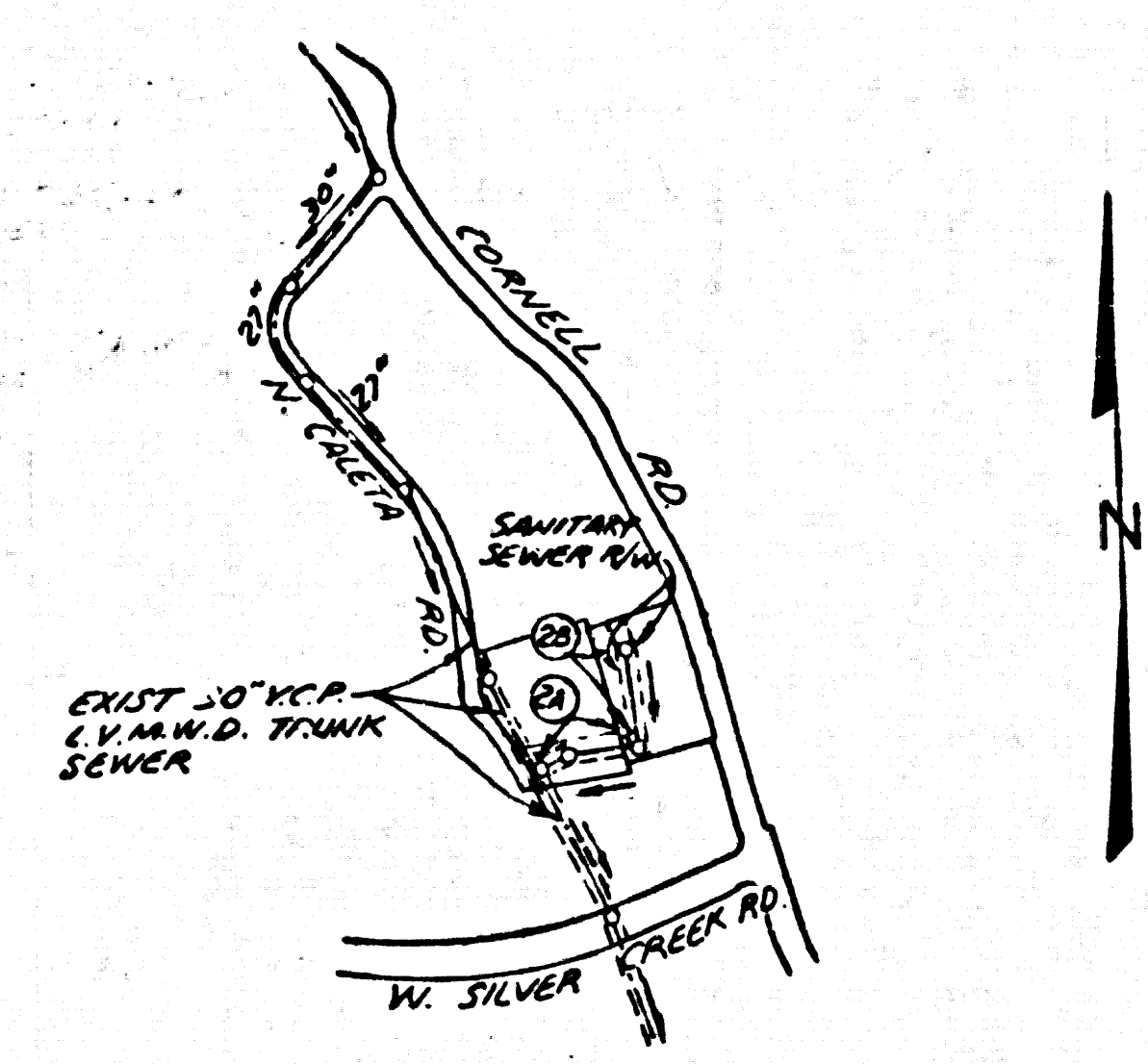
CONSTRUCTION NOTES CONT'D

- FULL COMPLIANCE WITH PART IV OF THE SPECIAL PROVISIONS IS REQUIRED FOR THE INSTALLATION OF A.B.S. COMPOSITE PIPE.
- MANHOLE WATER STOP GASKETS AND CLAMPS ARE REQUIRED FOR THE CONNECTION OF A.B.S. COMPOSITE PIPE TO MANHOLE STRUCTURES.
- A.B.S. SOLID WALL PIPE MUST BE USED FOR WYE AND HOUSE LATERAL CONNECTIONS TO A.B.S. COMPOSITE MAINLINE SEWER PIPE.
- A.B.S. COMPOSITE PIPE SHALL BE BEDDED IN CONFORMANCE WITH THE TABLE IN SECTION B-31 OF PART IV OF THE SPECIAL PROVISIONS.
- THREE DEGREE DEFLECTION COUPLERS ARE REQUIRED FOR RADIUS OF CURVATURE LESS THAN 360 FEET WHEN USING 8" A.B.S.C.P.
- NO CONNECTIONS FOR THE DISPOSAL OF INDUSTRIAL WASTE IS ALLOWED IF A.B.S. COMPOSITE PIPE IS USED.
- SEWER LINE CURVATURE SHALL NOT BE ACHIEVED BY PULLING OF JOINTS OR BEVELING PIPE ENDS WHEN USING PLASTIC PIPE INCLUDING A.B.S. COMPOSITE PIPE.
- ALL MANHOLES SHALL BE CONSTRUCTED IN ACCORDANCE WITH THE TABLE IN SECTION B-31 OF PART IV OF THE SPECIAL PROVISIONS.
- ALL MANHOLES SHALL BE CONSTRUCTED IN ACCORDANCE WITH THE TABLE IN SECTION B-31 OF PART IV OF THE SPECIAL PROVISIONS.
- ALL MANHOLES SHALL BE CONSTRUCTED IN ACCORDANCE WITH THE TABLE IN SECTION B-31 OF PART IV OF THE SPECIAL PROVISIONS.
- ALL MANHOLES SHALL BE CONSTRUCTED IN ACCORDANCE WITH THE TABLE IN SECTION B-31 OF PART IV OF THE SPECIAL PROVISIONS.
- ALL MANHOLES SHALL BE CONSTRUCTED IN ACCORDANCE WITH THE TABLE IN SECTION B-31 OF PART IV OF THE SPECIAL PROVISIONS.
- ALL MANHOLES SHALL BE CONSTRUCTED IN ACCORDANCE WITH THE TABLE IN SECTION B-31 OF PART IV OF THE SPECIAL PROVISIONS.
- ALL MANHOLES SHALL BE CONSTRUCTED IN ACCORDANCE WITH THE TABLE IN SECTION B-31 OF PART IV OF THE SPECIAL PROVISIONS.
- ALL MANHOLES SHALL BE CONSTRUCTED IN ACCORDANCE WITH THE TABLE IN SECTION B-31 OF PART IV OF THE SPECIAL PROVISIONS.



ENCASEMENT DETAIL SCALE 1"=2"

DOUBLE SCALE



INDEX MAP SCALE: 1"=600' P.C. NO. 10298 R/W EAST OF CALETA RD; N/S SILVER CREEK RD.

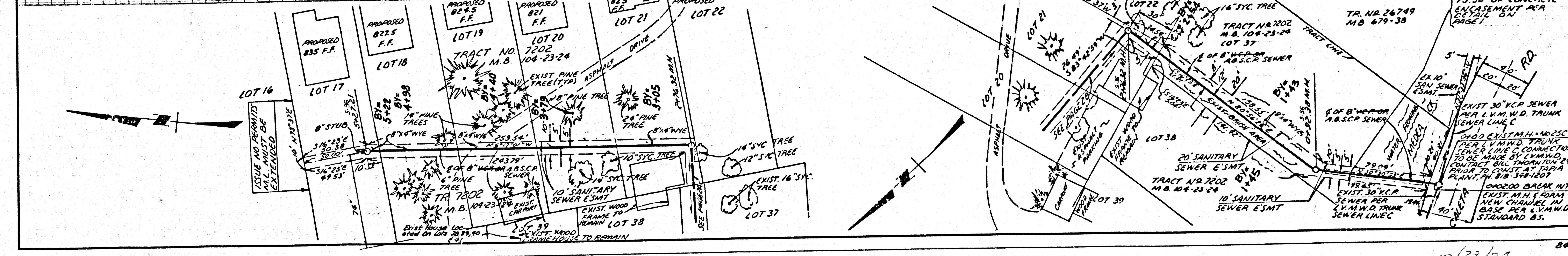
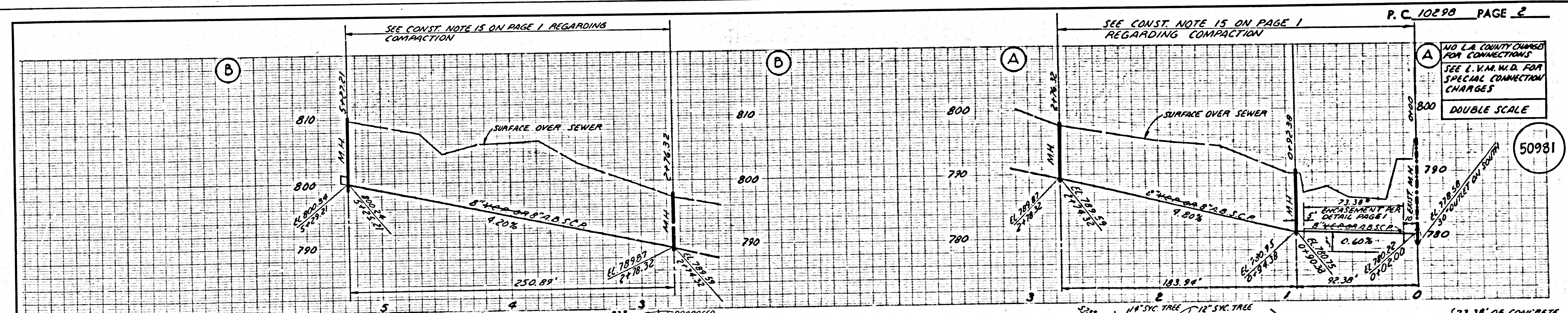
NOTE: NUMBER IN CIRCLES INDICATE PAGE NUMBER

GENERAL NOTES:

- ELEVATIONS ARE IN FEET ABOVE U.S.C. & G.S. SEA LEVEL DATUM OF 1988.
- NO REVISIONS SHALL BE MADE IN THESE PLANS WITHOUT THE APPROVAL OF THE COUNTY ENGINEER.
- NO REPRESENTATIVE OF THE COUNTY ENGINEER WILL SURVEY OR LAY OUT ANY PORTION OF THE WORK.
- GRADES TO WHICH THE IMPROVEMENT IS TO BE CONSTRUCTED ARE SHOWN ON PLANS AND PROFILES. GRADE POINTS FOR TOP OF CURVE, CENTER LINE OF STREETS, OR CENTER LINE OF ALLEYS ARE SHOWN BY CIRCLES ON PROFILES. ALL POINTS BETWEEN DESIGNATED POINTS THE GRADE SHALL BE ESTABLISHED SO AS TO CONFORM TO A STRAIGHT LINE DRAWN BETWEEN SAID DESIGNATED POINTS.
- THE PRIVATE ENGINEER SHALL FURNISH THE COUNTY ENGINEER WITH GRADE SHEETS AND STATIONING FOR ALL HOUSE LATERALS AND 10' ON 10' MANHOLES AND SHALL PROVIDE STAKES FOR THEM AT THEIR PROPER LOCATIONS WITH STATIONING PLANS MARKED. ALL HOUSE LATERALS SHALL BE CONSTRUCTED IN A STRAIGHT ALIGNMENT AT RIGHT ANGLES FROM THE MAIN LINE SEWER EXCEPT AS SHOWN ON THE PLANS. HOUSE LATERALS FROM CHIMNEYS SHALL NOT HAVE AN ANGLE OF LESS THAN 45° WITH THE MAIN LINE SEWER. ANY CHANGE IN ALIGNMENT SHALL BE REQUESTED IN WRITING BY THE PRIVATE ENGINEER.
- THE PRIVATE ENGINEER SHALL FURNISH THE HOUSE LATERAL DEPTH AT THE PROPERTY LINE BELOW THE TOP OF CURB ELEVATION FOR EACH HOUSE LATERAL ON THE GRADE SHEET.
- BEFORE WORK CAN BE STARTED, THE CONTRACTOR MUST OBTAIN A PERMIT TO EXCAVATE IN COUNTY STREETS FROM THE L.A. COUNTY ROAD DEPT., DISTRICT OFFICE NO. 2, AND PAY A FEE TO THE COUNTY ENGINEER, 802 S. VERMONT AVENUE, LOS ANGELES, CA 90004, TO COVER THE COST OF CONSTRUCTION INSPECTION AND RECORD PLANS.
- IF WORK IS TO BE DONE IN A STATE HIGHWAY, A PERMIT MUST BE OBTAINED FROM THE STATE OF CALIFORNIA, DIVISION OF HIGHWAYS, 130 SOUTH SPRING STREET, LOS ANGELES, CALIFORNIA.
- APPROVAL OF THESE PLANS BY THE COUNTY OF LOS ANGELES DOES NOT CONSTITUTE A REPRESENTATION AS TO THE ACCURACY OF THE LOCATION OF OR THE EXISTENCE OR NON-EXISTENCE OF ANY UNDERGROUND UTILITY PIPE, OR STRUCTURE WITHIN THE LIMITS OF THIS PROJECT. THIS NOTE APPLIES TO ALL PAGES.
- REFER TO SECTION 7.18.41 OF THE STANDARD SPECIFICATIONS, REGARDING SAFETY ORDERS.
- PRIOR TO THE ISSUANCE OF THE REQUIRED SEWER CONSTRUCTION PERMIT, THE CONTRACTOR SHALL OBTAIN AND FILE WITH THE COUNTY ENGINEER COPIES OF A PERMIT TO EXCAVATE IN COUNTY STREETS FROM THE LOS ANGELES COUNTY ROAD DEPARTMENT, A PERMIT FOR EXCAVATIONS AND TRENCHES FROM THE STATE OF CALIFORNIA, DIVISION OF INDUSTRIAL SAFETY AND A CERTIFICATE OF WORKERS COMPENSATION INSURANCE WITH THE DEPARTMENT OF COUNTY ENGINEER, 802 SOUTH VERMONT, RM. 408, LOS ANGELES, CALIFORNIA 90004, NAMED AS THE CERTIFICATE HOLDER TO BE NOTIFIED 30 DAYS PRIOR TO CANCELLATION OF POLICY.

CONSTRUCTION NOTES:

- WORK SHALL BE CONSTRUCTED ACCORDING TO THE STANDARD SPECIFICATIONS FOR PUBLIC WORKS CONSTRUCTION (LATEST EDITION WITH ALL SUPPLEMENTS) AND COUNTY ENGINEER'S SPECIAL PROVISIONS FOR THE CONSTRUCTION OF SANITARY SEWERS DATED SEPTEMBER 24, 1978. AND SHALL BE PROSECUTED ONLY IN THE PRESENCE OF THE COUNTY ENGINEER.
- THE CONTRACTOR SHALL NOTIFY THE PROJECT MANAGER BY TELEPHONE, 726-2100, AT LEAST TWENTY-FOUR HOURS BEFORE STARTING ANY WORK UNDER THIS CONTRACT.
- HOUSE LATERALS TO BE CONSTRUCTED WITH INVERTS AT PROPERTY LINE 6 FEET BELOW CURB GRADE EXCEPT AS NOTED.
- IF A POWER POLE IS WITHIN THREE FEET OF THE SEWER, THE SEWER SHALL BE ENCASED PER S-8. CASE II TWO FEET ON EACH SIDE FROM THE POINT OF INTERFERENCE.
- IF DURING THE COURSE OF CONSTRUCTION IT IS DETERMINED THAT THERE IS LESS THAN FOUR FEET OF COVER OVER THE TOP OF A MAIN LINE OR HOUSE LATERAL SEWER WHICH IS NOT INDICATED ON THE PLANS, THE PIPE SHALL BE ENCASED PER S-8. CASE II UNLESS OTHERWISE APPROVED BY THE COUNTY ENGINEER.
- ALL JOINTS BETWEEN CAST IRON PIPE AND VITRIFIED CLAY PIPE SHALL BE MADE WITH A RUBBER BLEEVE JOINT, TYPE "C" OR "D", (WITH BUSHING IN NECESSARY) PER STANDARD SPECIFICATIONS SECTION 208.2 BE MADE WITH APPROVED FITTINGS.
- SEWERS TO BE TESTED FOR LEAKAGE PER SECTION 206-14 OF THE STANDARD SPECIFICATIONS AND SPECIAL PROVISIONS.
- RESURFACE ALL TRENCHES WITHIN PAVED AREAS TO MEET L.A. COUNTY ROAD DEPT. OR CALIFORNIA STATE HIGHWAY REQUIREMENTS IN ACCORDANCE WITH PERMITS.
- FULL COMPLIANCE WITH SECTION 208-1.3.5 OF THE SPECIAL PROVISIONS WILL BE REQUIRED FOR BACKFILL IN STREETS. CERTIFICATION OF BACKFILL COMPACTION AND SAND EQUIVALENTS BY A QUALIFIED, REGISTERED TESTING LABORATORY SHALL BE PROVIDED BY THE PERMITTEE PRIOR TO THE ISSUANCE OF A CERTIFICATE OF PARTIAL ACCEPTANCE.
- SPECIAL BACKFILL BY ASSESSMENT CONSTRUCTION (A) BACKFILL TRENCH AND REPLACE OTHER EARTH SO AS TO ACHIEVE THE NATURAL OR FINISHED GRADES AND SLOPES SHOWN ON THE GRADING PLAN APPROVED FOR THE DEVELOPMENT BY THE BUILDING AND SAFETY DIVISION (B) ALL BACKFILL AND JARNS PLACED SHALL BE COMPACTED TO A MINIMUM OF 90% OF MAXIMUM DENSITY PER A.S.T.M. STD. METHOD OF TEST D1557 IF AN APPROVED ACCEPTABLE CERTIFICATION OF SUCH COMPACTION SHALL BE SUBMITTED TO THE PROJECT MANAGER DIVISION.



88501 29

DA ATJAD 013 W19