

# SANITARY SEWERS

TO BE CONSTRUCTED IN  
TRACT NO. 32842

## PRIVATE CONTRACT NO. 10299

W.S. 38-04, 11-29  
1 SHEET, 2 PAGES

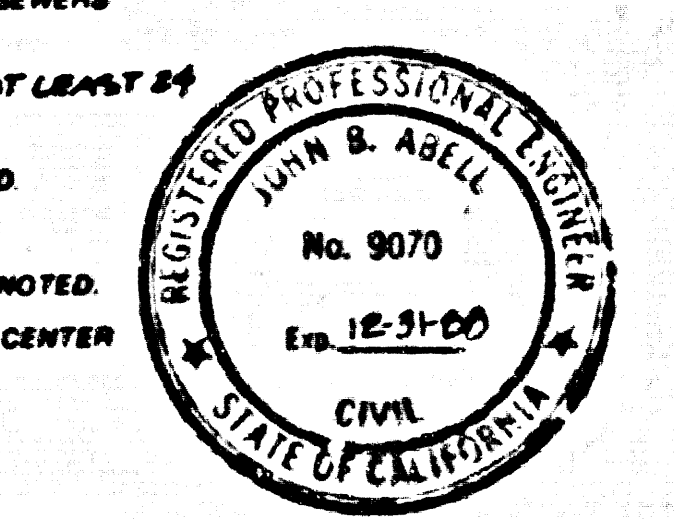
52749

SCALE: VERT. 1"=4'  
HORIZ. 1"=40'

PREPARED IN THE OFFICES OF  
JOHN B. ABELL INC.  
1401 N. GARFIELD ST.  
LOS ANGELES, CALIF. 90012  
REG. C. E. No. 2270

THE FOLLOWING LATEST REVISED STANDARD PLANS ON FILE IN THE OFFICE OF THE PUBLIC WORKS SHALL APPLY IN THE CONSTRUCTION OF THIS PROJECT:

LEGEND	5-1
MINIMUM PUBLIC SAFETY REQUIREMENTS	5-2
STANDARD MANHOLE	5-3
STANDARD MANHOLE STEP	5-7
RODDING FOR SEWER PIPE	5-8
CRACKING AND ENCASING	5-9
WYE OR TEE SUPPORT	5-10
ALLOWABLE TRENCH WIDTHS	5-11
LOCKING MANHOLE FRAME AND COVER	5-12
NON-REINFORCED PRECAST CONCRETE MANHOLE BREAKING INTO EXISTING BURIED OR PRECAST CONCRETE MANHOLE	5-13



### COUNTY OF LOS ANGELES, CALIFORNIA

THOMAS A. TIDEMANSON  
DIRECTOR OF PUBLIC WORKS  
APPROVED *Carl J. Blum* 2/5/87  
DATE

CHARLES W. CAREY, CHIEF ENGINEER  
CO. SAN DIST. NO. 44  
APPROVED *Charles W. Carey* 2/9/87  
DATE

CHECKED *Henry C. Anderson* 2-2-87  
DATE

REG. C. E. NO. 17536

LA PUENTE BLDG. DIST. 2.00

### GENERAL NOTES:

- ELEVATIONS ARE IN FEET ABOVE U.S.C. & G.S. SEA LEVEL DATUM OF 1989.
- NO REVISIONS SHALL BE MADE IN THESE PLANS WITHOUT THE APPROVAL OF THE PUBLIC WORKS.
- NO REPRESENTATION OF THE PUBLIC WORKS WILL BE GIVEN OR LAY OUT ANY PORTION OF THE WORK.
- GRADES TO WHICH THIS AMPLIFICATION IS TO BE CONSTRUCTED ARE SHOWN ON PROFILES AT ALL POINTS BETWEEN DESIGNATED POINTS. THE GRADE SHALL BE ESTABLISHED SO AS TO CONFORM TO A STRAIGHT LINE DRAWN BETWEEN SAID DESIGNATED POINTS.
- THE PRIVATE ENGINEER SHALL FURNISH THE PUBLIC WORKS WITH GRADE SHEETS AND STATIONING FOR ALL HOUSE LATERALS AND "T" OR "Y" BRANCHES AND SHALL PROVIDE STAKES FOR THEM AT STATIONING LOCATIONS PLAINLY MARKED. ALL HOUSE LATERALS SHALL BE CONSTRUCTED IN A STRAIGHT ALIGNMENT AT RIGHT ANGLES FROM THE MAIN LINE SEWER EXCEPT AS SHOWN ON THE PLANS. HOUSE LATERALS FROM CHIMNEYS SHALL NOT HAVE AN ANGLE OF LESS THAN 45° WITH THE MAIN LINE SEWER. ANY CHANGE IN ALIGNMENT SHALL BE REQUESTED IN WRITING BY THE PRIVATE ENGINEER.
- THE PRIVATE ENGINEER SHALL FURNISH THE HOUSE LATERAL DEPTH AT THE PROPERTY LINE BELOW THE TOP OF CURB ELEVATION FOR EACH HOUSE LATERAL ON THE GRADE SHEET.
- BEFORE WORK CAN BE STARTED, THE CONTRACTOR MUST OBTAIN A PERMIT TO EXCAVATE IN COUNTY STREETS FROM THE L.A. COUNTY PUBLIC WORKS DISTRICT OFFICE NO. 1, AND PAY A FEE TO THE PUBLIC WORKS, 880 S. W. MONT AVENUE, LOS ANGELES, CA 90006, TO COVER THE COST OF CONSTRUCTION INSPECTION AND RECORD PLANS.
- IF WORK IS TO BE DONE IN A STATE HIGHWAY, A PERMIT MUST BE OBTAINED FROM THE STATE OF CALIFORNIA, DIVISION OF HIGHWAYS, 123 SOUTH SPRING STREET, LOS ANGELES, CA 90012.
- APPROVAL OF THIS PLAN BY THE COUNTY OF LOS ANGELES DOES NOT CONSTITUTE A REPRESENTATION AS TO THE ACCURACY OF THE LOCATION OF OR THE EXISTENCE OR NON-EXISTENCE OF ANY UNDERGROUND UTILITY PIPE, OR STRUCTURE WITHIN THE LIMITS OF THIS PROJECT. THIS NOTE APPLIES TO ALL PAGES.
- REFER TO SECTION 7.16.1 OF THE STANDARD SPECIFICATIONS, REGARDING SAFETY ORDERS.
- PRIOR TO THE ISSUANCE OF THE REQUIRED SEWER CONSTRUCTION PERMIT, THE CONTRACTOR SHALL OBTAIN AND FILE WITH THE PUBLIC WORKS COPIES OF A PERMIT TO EXCAVATE IN COUNTY STREETS FROM THE LOS ANGELES COUNTY PUBLIC WORKS. A PERMIT FOR EXCAVATIONS AND TRENCHES FROM THE COUNTY OF CALIFORNIA, DIVISION OF INDUSTRIAL SAFETY AND CERTIFICATE OF WORKERS' COMPENSATION INSURANCE WITH THE DEPARTMENT OF PUBLIC WORKS, 500 SOUTH WILCOX, RM 840, LOS ANGELES, CALIFORNIA 90005, NAMED AS THE CERTIFICATE HOLDER TO BE NOTIFIED 30 DAYS PRIOR TO CANCELLATION OF POLICY.

### CONSTRUCTION NOTES:

- WORK SHALL BE CONSTRUCTED ACCORDING TO THE STANDARD SPECIFICATIONS FOR PUBLIC WORKS CONSTRUCTION (1982 EDITION) WITH ALL SPECIAL PROVISIONS AND COUNTY ENGINEER SPECIAL PROVISIONS FOR THE CONSTRUCTION OF SANITARY SEWERS DATED SEPTEMBER 21, 1976, AND SHALL BE PROSECUTED ONLY IN THE PRESENCE OF THE PUBLIC WORKS.
- THE CONTRACTOR SHALL NOTIFY THE COUNTY PUBLIC WORKS BY TELEPHONE (213) 256-8281 AT LEAST 72 HOURS BEFORE STARTING ANY WORK UNDER THIS CONTRACT.
- HOUSE LATERALS TO BE CONSTRUCTED WITH INVERTS AT PROPERTY LINE 8 FEET BELOW CURB GRADE EXCEPT AS NOTED.
- WYE OR TEE BRANCHES MAY BE USED FOR CONNECTIONS TO MAINLINE SEWERS EXCEPT AS NOTED.
- ALL STRUCTURES SHALL BE EITHER BRICK MANHOLES PER S-3 OR PRECAST CONCRETE MANHOLES PER S-3E EXCEPT AS NOTED.
- PROVIDE STAKES ON THE PROPERTY LINE OR PROPERTY LINES PRECAST AT RIGHT ANGLES TO THE SEWER LINE AT THE CENTER LINE OF EACH MANHOLE.
- MANHOLE TOPS IN IMPROVED RIGHTS OF WAY TO BE TO FINISHED GRADE.
- WITNIFIED CLAY PIPE JOINTS SHALL BE TYPE "D" OR "B" PER STANDARD SPECIFICATIONS SECTION 708-2.
- IF A POWER POLE IS WITHIN THREE FEET OF THE SEWER, THE SEWER SHALL BE ENCASED PER S-23, CASE II, TWO FEET ON EACH SIDE FROM THE POINT OF INTERFERENCE.
- IF DURING THE COURSE OF CONSTRUCTION IT IS DETERMINED THAT THERE IS LESS THAN FOUR FEET OF COVER OVER THE TOP OF A MAIN LINE OR HOUSE LATERAL SEWER WHICH IS NOT INDICATED ON THE PLANS, THE PIPE SHALL BE ENCASED PER S-23, CASE II UNLESS OTHERWISE APPROVED BY THE COUNTY ENGINEER.
- ALL JOINTS BETWEEN CAST IRON PIPE AND WITNIFIED CLAY PIPE SHALL BE MADE WITH A RUBBER CLEAVE JOINT, TYPE "C" OR "D" (WITH BUSHING IF NECESSARY) PER STANDARD SPECIFICATIONS SECTION 708-2.
- SEWERS TO BE TESTED FOR LEAKAGE PER SECTION 308-1.1 OF THE STANDARD SPECIFICATIONS AND SPECIAL PROVISIONS.
- RESURFACE ALL TRENCHES WITHIN PAVED AREAS TO MEET L.A. PUBLIC WORKS DEPT. OR CALIFORNIA STATE HIGHWAY REQUIREMENTS IN ACCORDANCE WITH PERMITS.
- FULL COMPLIANCE WITH SECTION 308-1.16 STANDARD SPECIFICATION WILL BE REQUIRED FOR BACKFILL IN STREETS. CERTIFICATION OF BACKFILL COMPACTION AND SAND EQUIVALENTS BY A QUALIFIED, REGISTERED TESTING LABORATORY SHALL BE PROVIDED BY THE PERMITTEE PRIOR TO THE ISSUANCE OF A CERTIFICATE OF PARTIAL ACCEPTANCE.
- SPECIAL BACKFILL IN EASEMENT CONSTRUCTION: (A) BACKFILL TRENCH AND REPLACE OTHER EARTH SO AS TO ACHIEVE THE NATURAL OR FINISHED GRADES AND SLOPES SHOWN ON THE GRADING PLAN APPROVED FOR THE DEVELOPMENT BY THE BUILDING AND SAFETY DIVISION; (B) ALL BACKFILL AND EARTH REPLACED SHALL BE COMPACTED TO A MINIMUM OF 80% OF MAXIMUM DENSITY PER A.S.T.M. #20. METHOD OF TEST 008557 AS MODIFIED. ACCEPTABLE CERTIFICATION OF SUCH COMPACTION SHALL BE SUBMITTED TO THE CONSTRUCTION DIVISION PUBLIC WORKS.

### PRIVATE ENGINEER'S NOTICE TO CONTRACTORS:

THE EXISTENCE AND LOCATION OF ANY UNDERGROUND UTILITY PIPES OR STRUCTURES SHOWN ON THESE PLANS ARE OBTAINED BY A SEARCH OF THE AVAILABLE RECORDS. TO THE BEST OF OUR KNOWLEDGE THERE ARE NO OTHER UTILITIES EXCEPT AS SHOWN ON THESE PLANS. THE CONTRACTOR IS REQUIRED TO TAKE DUE PRECAUTIONARY MEASURES TO PROTECT THE UTILITY LINES SHOWN AND ANY OTHER LINES NOT OF RECORD OR NOT SHOWN ON THESE PLANS. THE CONTRACTOR SHALL BE RESPONSIBLE FOR NOTIFYING "UNDERGROUND SERVICE ALERT" @ 1-800-422-4133 TWO WORKING DAYS PRIOR TO ANY EXCAVATION OR CONSTRUCTION.

*John Abell*  
REGISTERED ENGINEER  
R.C.E. 9070

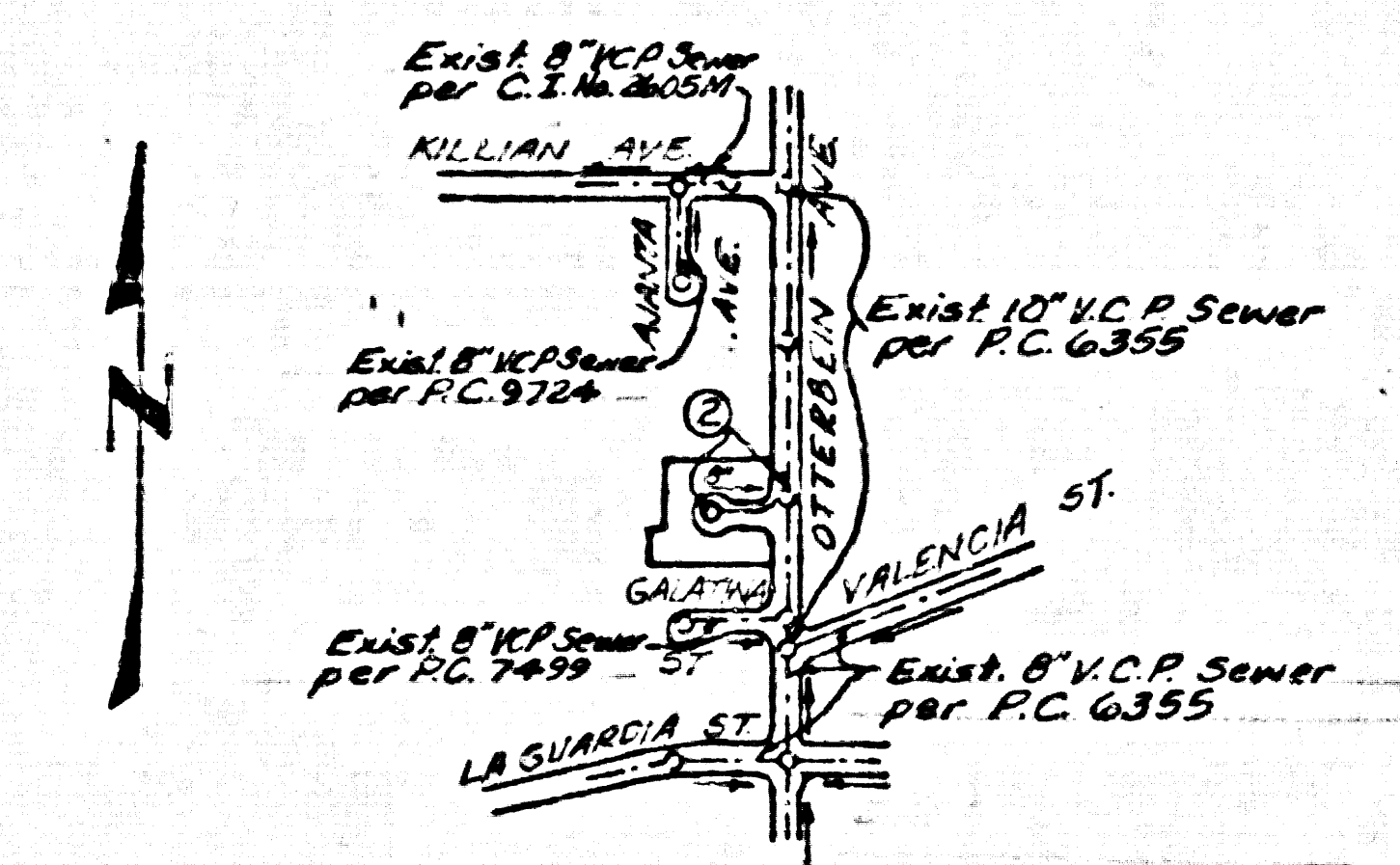
### CONSTRUCTION NOTES CONT.

- FULL COMPLIANCE WITH PART IV OF SPECIAL PROVISIONS IS REQUIRED FOR THE INSTALLATION OF ABS COMPOSITE PIPE.
- MANHOLE WATER STOPPERS AND CLAMPS ARE REQUIRED FOR THE CONNECTION OF ABS COMPOSITE PIPE TO MANHOLE STRUCTURES.
- ABS SOLID WALL PIPE MUST BE USED FOR WYE AND HOUSE LATERAL CONNECTIONS TO ABS COMPOSITE MAINLINE SEWER PIPE.
- ABS COMPOSITE PIPE SHALL BE BEDDED IN CONFORMANCE WITH THE TABLE IN SECTION B-3.1 OF PART IV OF SPECIAL PROVISIONS.
- THREE DEGREE DEFLECTION COUPLERS ARE REQUIRED FOR RADIUS OF CURVATURE LESS THAN 300 FT WHEN USING 8" ABS COMPOSITE PIPE.
- NO CONNECTIONS FOR DISPOSAL OF INDUSTRIAL WASTE IS ALLOWED IF ABS COMPOSITE PIPE IS USED.
- SEWERLINE CURVATURE SHALL NOT BE ACHIEVED BY PULLING OF JOINTS OR DEVELOPING PIPE ENDS WHEN USING PLASTIC PIPE INCLUDING ABS COMPOSITE PIPE.
- ALL WYES AND/OR HOUSE LATERALS ARE TO BE LOCATED AT LEAST FIVE FEET APART WHEN POSSIBLE NOT CLOSER THAN FIVE FEET TO ANY MANHOLE.
- ABS SOLID WALL PIPE IS NOT ACCEPTABLE FOR USE AS MAINLINE SEWER.
- ONLY WYE BRANCHES ARE TO BE USED FOR CONNECTION TO ABS COMPOSITE MAINLINE SEWER PIPE.

NO CONNECTION FOR THE DISPOSAL OF INDUSTRIAL WASTES SHALL BE MADE TO SEWERS SHOWN ON THESE DRAWINGS UNTIL A PERMIT FOR INDUSTRIAL WASTEWATER DISCHARGE HAS BEEN ISSUED BY THE SANITATION DISTRICTS FOR SAID CONNECTION.

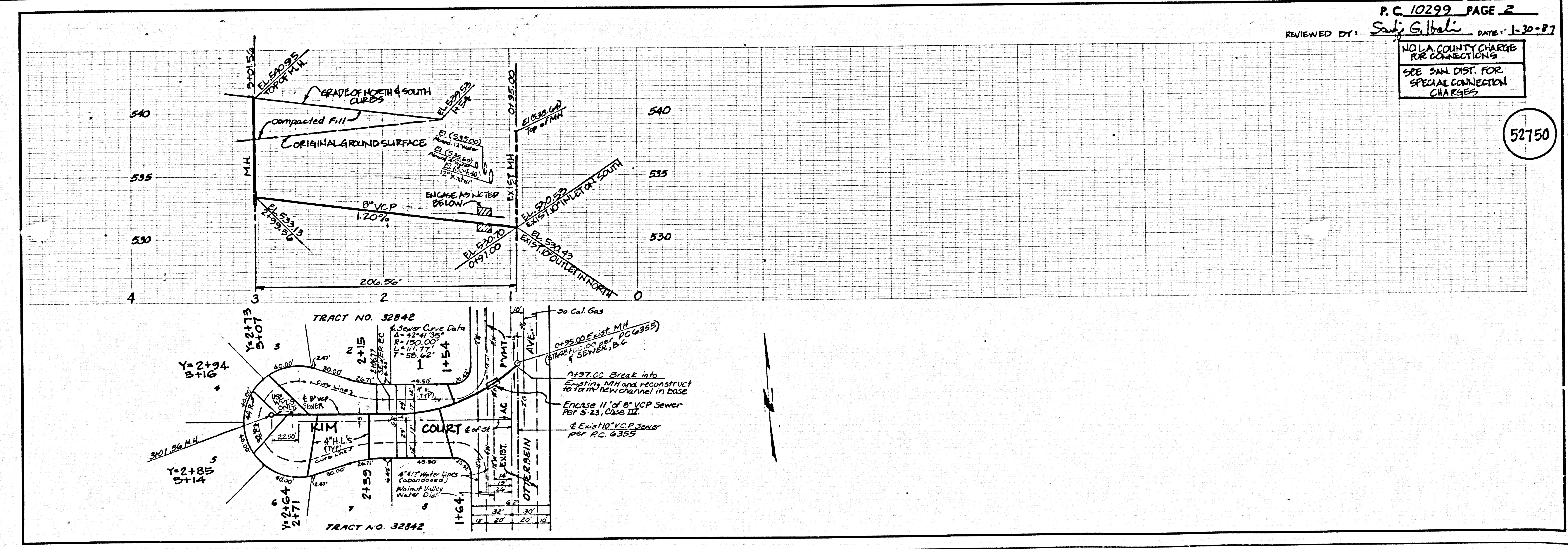
BEFORE BREAKING INTO OR CONSTRUCTION ON A COUNTY SANITATION DISTRICT SEWER AND PRIOR TO FINAL ACCEPTANCE OF THE PROJECT, SANITATION DISTRICT INSPECTOR SHALL BE NOTIFIED BY PHONE (818) 962-8605 SO THAT REQUIRED INSPECTION CAN BE MADE.

B.M. CG 3148 ELV. 546.225  
L.S. Tag & 760 N. Ch. Otterbein Ave. 18 Ft.  
W. Approx. E. About 30 Ft. S. & Prod.  
Valencia Ave.  
OTTERBEIN QUAD. 1982



INDEX MAP  
P.C. 10299, TRACT NO. 32842  
SCALE: 1"=600'

NOTE:  
Number in circle indicates page number.



P.C. 10299 PAGE 2  
REVIEWED BY: *Sally G. Itali* DATE: 1-30-87

NO L.A. COUNTY CHARGE FOR CONNECTIONS  
SEE SAN. DIST. FOR SPECIAL CONNECTION CHARGES

52750

EE501 09

5485C.01 TRACT