

B.M. B.L. 4233 ELEV 1280.814
 NO. 8476 IN C.B. MCGEEAN PARKWAY
 42 N. 1/4 SEC. 10 T. 11 N. R. 10 W. S. 1/4
 CONC. W.R. ENT. TO LAWRENCE HOUSE TRACT
 NEARLY QUAD. 19 72

REVISION NO. 4 DATE 6/11/84
 PAGE 1: REVISED INDEX MAP
 PAGE 2, 3A & 3B: REVISED PLAN & PROFILE
 APPROVED BY: *[Signature]*
 OFFICE OF THE DIRECTOR OF PUBLIC WORKS

DOUBLE SCALE

GENERAL NOTES: CONT'D

8. ALL REFERENCES IN THIS PLAN TO THE COUNTY ENGINEER, THE ROAD DEPARTMENT, OR THE FLOOD CONTROL DISTRICT SHALL APPLY TO THOSE APPROPRIATE SECTIONS OF THE DEPARTMENT OF PUBLIC WORKS.

NO CONNECTION FOR THE DISPOSAL OF INDUSTRIAL WASTES SHALL BE MADE TO SEWERS SOME OF THESE BRANCHES UNTIL A PERMIT FOR INDUSTRIAL WASTEWATER DISCHARGE HAS BEEN ISSUED BY THE SANITATION DISTRICTS FOR SAID CONNECTION.

BEFORE BREAKING INTO OR CONSTRUCTION ON A COUNTY SANITATION DISTRICT SEWER AND PRIOR TO FINAL ACCEPTANCE OF THE PROJECT, SANITATION DISTRICT INSPECTOR SHALL BE NOTIFIED BY PHONE 818 - 362-8605 SO THAT REQUIRED INSPECTION CAN BE MADE.

REVISION NO. 3 DATE 1-28-86
 PAGE 14: REVISED PLAN AND PROFILE FROM STA. 0+30.27 TO STA. 2+80.00
 APPROVED BY: *[Signature]*
 OFFICE OF THE DIRECTOR OF PUBLIC WORKS

REVISION NO. 1 DATE 5-7-85
 PAGE 10: ADDED ENCASUREMENT IN PLAN (PICTURE ONLY)
 REVISED INLET ELEVATION ON WEST AT M.N. (STA. 13+01.88)
 PAGE 11: REVISED SEWER GRADE FROM STA. 1+00.00 TO 1+270.00 ENCASE.
 PAGE 14: REVISED SEWER GRADE FROM STA. 2+80.00 TO 5+20.00 INCLUDING USE OF VERTICAL CURVE.
 APPROVED BY: *[Signature]* GE 1941
 OFFICE OF THE DIRECTOR OF PUBLIC WORKS

ISSUE NO HOUSE CONNECTION PERMITS ON PAGES 9 THRU 18 UNTIL OUTLET SEWER P.C. 10244 IS ACCEPTED FOR PUBLIC USE BY THE COUNTY OF LOS ANGELES

REVISION NO. 2 DATE 12-20-85
 PAGE 1: REVISED SEWER ALIGNMENT IN INDEX MAP PERTAINING TO PAGES 13 & 14
 PAGE 13 & 14: REVISED PLAN & PROFILE
 APPROVED BY: *[Signature]*
 OFFICE OF THE DIRECTOR OF PUBLIC WORKS

GENERAL NOTES:

- ELEVATIONS ARE IN FEET ABOVE U.S.C. & G.S. SEA LEVEL DATUM OF 1988.
- NO WORK SHALL BE DONE IN THESE PLANS WITHOUT THE APPROVAL OF THE COUNTY ENGINEER.
- NO REPRESENTATIONS OF THE COUNTY ENGINEER SHALL BE MADE OR LAY OUT ANY PORTION OF THE WORK.
- GRADES TO WHICH THIS IMPROVEMENT IS TO BE CONSTRUCTED ARE SHOWN ON PLANS AND PROFILES. GRADE POINTS FOR 1" OF CURVE, CENTER LINE OF STREETS, OR CENTER LINE OF ALLEYS ARE SHOWN BY CIRCLES ON PROFILES AT ALL POINTS BETWEEN DESIGNATED POINTS THE GRADE SHALL BE ESTABLISHED SO AS TO CONFORM TO A STRAIGHT LINE DRAWN BETWEEN SAID DESIGNATED POINTS.
- THE PRIVATE ENGINEER SHALL FURNISH THE COUNTY ENGINEER WITH GRADE SHEETS AND STATIONING, FOR ALL HOUSE LATERALS AND "OFF" BRANCHES AND SHALL PROVIDE STAKES FOR THEM AT THEIR PROPER LOCATIONS WITH STATIONING PLAINLY MARKED. ALL HOUSE LATERALS SHALL BE CONSTRUCTED IN A STRAIGHT ALIGNMENT AT RIGHT ANGLES FROM THE MAIN LINE SEWER EXCEPT AS SHOWN ON THE PLANS. HOUSE LATERALS FROM CURVES SHALL NOT HAVE AN ANGLE OF LESS THAN 45° WITH THE MAIN LINE SEWER. ANY CHANGE IN ALIGNMENT SHALL BE REQUESTED IN WRITING BY THE PRIVATE ENGINEER.
- THE PRIVATE ENGINEER SHALL FURNISH THE HOUSE LATERAL DEPTH AT THE PROPERTY LINE BELOW THE TOP OF CURB ELEVATION FOR EACH HOUSE LATERAL ON THE GRADE SHEET.
- BEFORE WORK CAN BE STARTED, THE CONTRACTOR MUST OBTAIN A PERMIT TO EXCAVATE IN COUNTY STREETS FROM THE L.A. COUNTY ROAD DEPT., DISTRICT OFFICE NO. 3 AND PAY A FEE TO THE COUNTY ENGINEER, 880 S. VERMONT AVENUE, LOS ANGELES, CA 90005 TO COVER THE COST OF CONSTRUCTION INSPECTION AND RECORD PLANS.
- IF WORK IS TO BE DONE IN A STATE HIGHWAY, A PERMIT MUST BE OBTAINED FROM THE STATE OF CALIFORNIA, DIVISION OF HIGHWAYS, 120 SOUTH SPRING STREET, LOS ANGELES, CALIFORNIA.
- APPROVAL OF THIS PLAN BY THE COUNTY OF LOS ANGELES DOES NOT CONSTITUTE A REPRESENTATION AS TO THE ACCURACY OF THE LOCATION OR THE EXISTENCE OR NON-EXISTENCE OF ANY UNDERGROUND UTILITY PIPE, OR STRUCTURE WITHIN THE LIMITS OF THIS PROJECT. THIS NOTE APPLIES TO ALL PAGES.
- REFER TO SECTION 7.1.1.1 OF THE STANDARD SPECIFICATIONS, REGARDING SAFETY ORDERS.
- PRIOR TO THE RESUMPTION OF THE REQUIRED SEWER CONSTRUCTION PERMIT, THE CONTRACTOR SHALL OBTAIN AND FILE WITH THE COUNTY ENGINEER COPIES OF A PERMIT TO EXCAVATE IN COUNTY STREETS FROM THE LOS ANGELES COUNTY ROAD DEPARTMENT, A PERMIT FOR EXCAVATIONS AND TRENCHES FROM THE STATE OF CALIFORNIA DIVISION OF HIGHWAYS SAFETY AND A CERTIFICATE OF WORKERS COMPENSATION INSURANCE WITH THE DEPARTMENT OF COUNTY ENGINEER, 880 SOUTH VERMONT, 9TH FLOOR, LOS ANGELES, CALIFORNIA 90005. NAMES AS THE CERTIFICATE HOLDER TO BE NOTIFIED 30 DAYS PRIOR TO CANCELLATION OF POLICY.

CONSTRUCTION NOTES:

- WORK SHALL BE CONSTRUCTED ACCORDING TO THE STANDARD SPECIFICATIONS FOR PUBLIC WORKS CONSTRUCTION (1988 EDITION) WITH THE SUPPLEMENTAL AND COUNTY ENGINEER SPECIAL PROVISIONS FOR THE CONSTRUCTION OF SANITARY SEWERS DATED SEP. 21, 1978, AND SHALL BE PROSECUTED ONLY IN THE PRESENCE OF THE COUNTY ENGINEER.
- THE CONTRACTOR SHALL NOTIFY THE ENVIRONMENTAL SERVICES BY TELEPHONE 783-9181 AT LEAST TWENTY-FOUR HOURS BEFORE STARTING ANY WORK UNDER THIS CONTRACT.
- HOUSE LATERALS TO BE CONSTRUCTED WITHIN THE PROPERTY LINE FEET BELOW CURB GRADE EXCEPT AS NOTED.
- PIPE OR TEE BRANCHES MAY BE USED FOR CONNECTIONS TO MAINLINE SEWERS EXCEPT AS NOTED.
- ALL STRUCTURES SHALL BE 8" OR 12" BRICK MANHOLES PER 8" OR 12" PRECAST CONCRETE MANHOLES PER 8" EXCEPT AS NOTED.
- PROVIDE STAKES ON THE 1" TO 1" DUTY LINE OR PROPERTY LINES PRODUCED AT RIGHT ANGLES TO THE SEWER LINE AT THE CENTER LINE OF EACH MANHOLE.
- MANHOLE TOPS IN UNIMPROVED AREAS OF WHAT TO BE SIX INCHES ABOVE FINISHED GRADE.
- STRENGTHENED CLAY PIPE JOINTS SHALL BE TYPE "D" OR "E" PER STANDARD SPECIFICATIONS SECTION 303-2.
- IF A POWER POLE IS WITHIN THREE FEET OF THE SEWER, THE SEWER SHALL BE ENCASED, PER 8" OR 12" CASE A TWO FEET ON EACH SIDE FROM THE POINT OF INTERFERENCE.
- IF DURING THE COURSE OF CONSTRUCTION IT IS DETERMINED THAT THERE IS LESS THAN FOUR FEET OF COVER OVER THE TOP OF A MAIN LINE OR HOUSE LATERAL SEWER WHICH IS NOT NOTICED ON THE PLAN, THE PIPE SHALL BE ENCASED PER 8" OR 12" CASE B UNLESS OTHERWISE APPROVED BY THE COUNTY ENGINEER.
- ALL JOINTS BETWEEN CLAY PIPE AND STRENGTHENED CLAY PIPE SHALL BE MADE WITH A RUBBER GLEVE JOINT, TYPE "C" OR "D" (WITH BUSHING IF NECESSARY) PER STANDARD SPECIFICATIONS SECTION 303-2.
- SEWERS TO BE TESTED FOR LEAKAGE PER SECTION 303-1.1 OF THE STANDARD SPECIFICATIONS AND SPECIAL PROVISIONS.
- RESURFACE ALL TRENCHES WITHIN PAVED AREAS TO MEET L.A. COUNTY ROAD DEPT. OR CALIFORNIA STATE HIGHWAY REQUIREMENTS IN ACCORDANCE WITH PERMITS.
- FULL COMPLIANCE WITH SECTION 303-1.3.3 OF THE SPECIAL PROVISIONS WILL BE REQUIRED FOR BACKFILL IN STREETS. CERTIFICATION OF BACKFILL COMPACTION AND SAND EQUIVALENTS BY A QUALIFIED, REGISTERED TESTING LABORATORY SHALL BE PROVIDED BY THE PERMITTEE PRIOR TO THE RESUMPTION OF A CERTIFICATE OF MATERIAL ACCEPTANCE.
- SPECIAL BACKFILL IN EASEMENT CONSTRUCTION: (A) BACKFILL TRENCH AND REPLACE OTHER EARTH SO AS TO ACHIEVE THE NATURAL OR FINISHED GRADE, AND SLOPES SHOWN ON THE GRADING PLAN APPROVED FOR THE DEVELOPMENT BY THE BUILDING AND SAFETY DIVISION. (B) ALL BACKFILL AND SAND PERCENT SHALL BE COMPACTED TO A MINIMUM OF 90% OF MAXIMUM DENSITY PER A.S.T.M. STD. METHOD OF TEST D1557 AS MODIFIED. ACCEPTABLE CERTIFICATION OF SUCH COMPACTION SHALL BE SUBMITTED TO THE ENVIRONMENTAL SERVICES.

NOTE: NUMBERS IN CIRCLES INDICATE PAGE NUMBERS

INDEX MAP SCALE: 1" = 600'

PC. NO. 10302 TRACT NO. 43117

PROFILE, ALIGNMENT AND GRADE OF **SANITARY SEWERS** TO BE CONSTRUCTED IN TRACT NO. 43117

PRIVATE CONTRACT NO. 10302 INDEX A-47

9 SHEETS, 18 PAGES (51707)

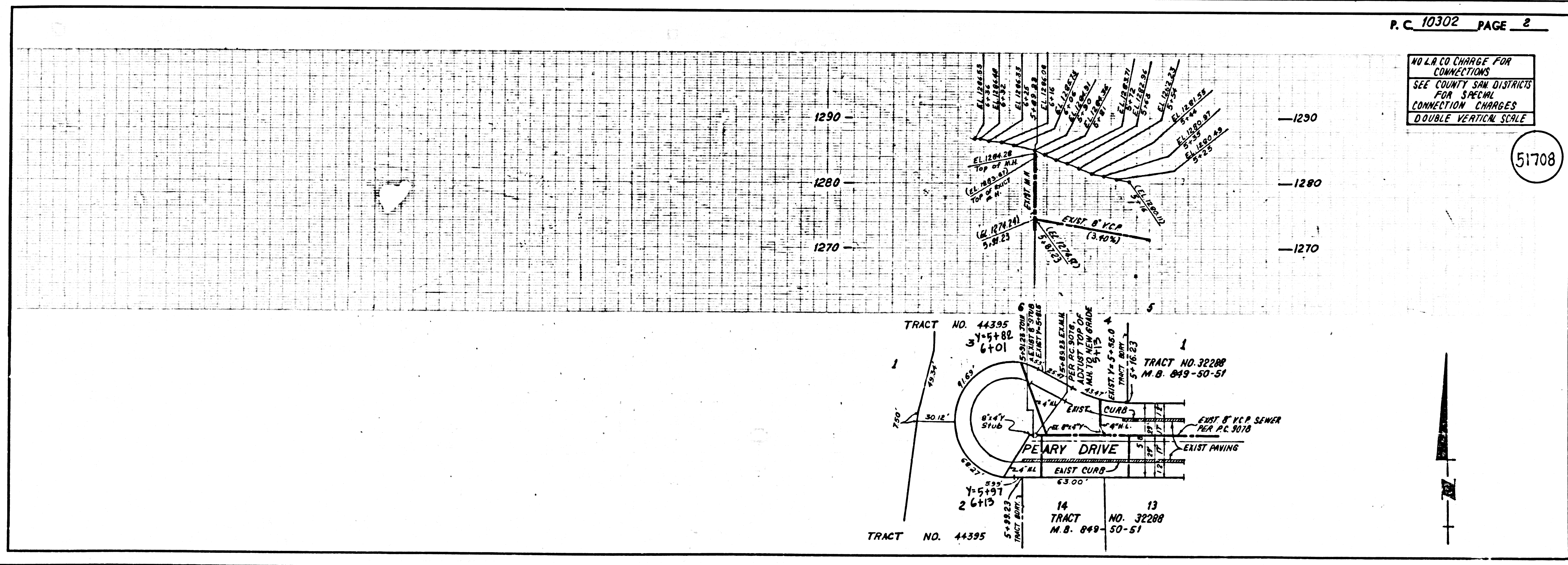
SCALE: VERT. 1" = 8' SEPT. 4, 1984
 HORIZ. 1" = 40'

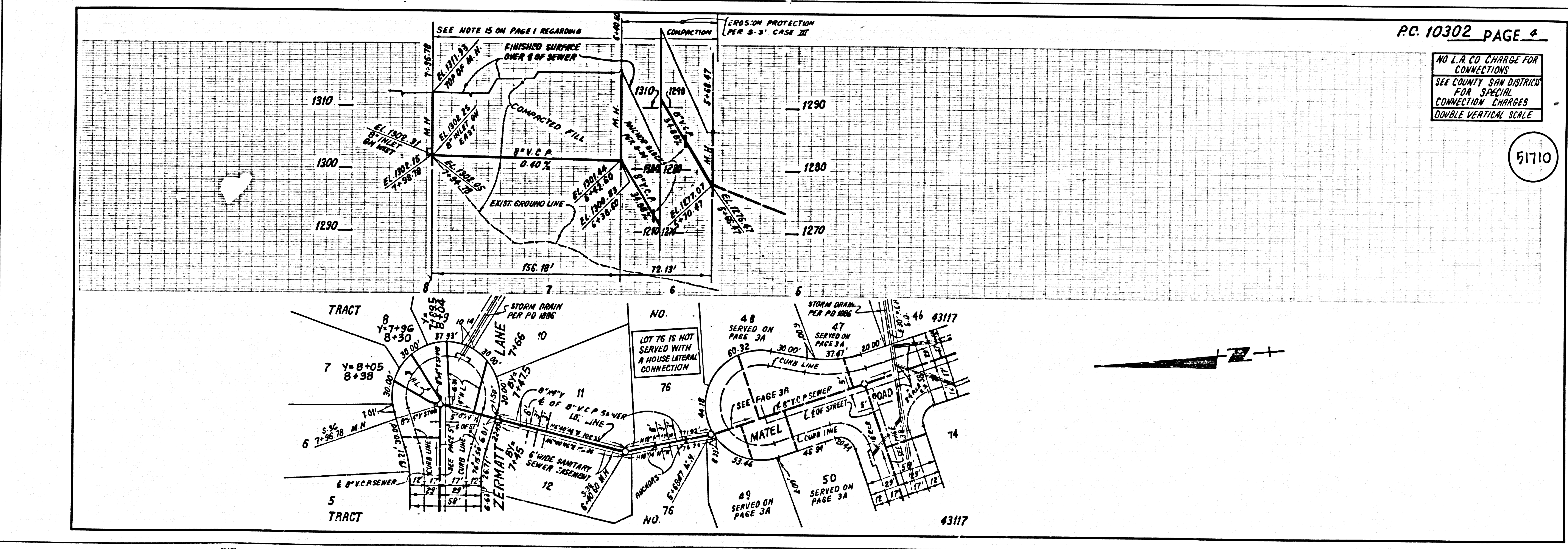
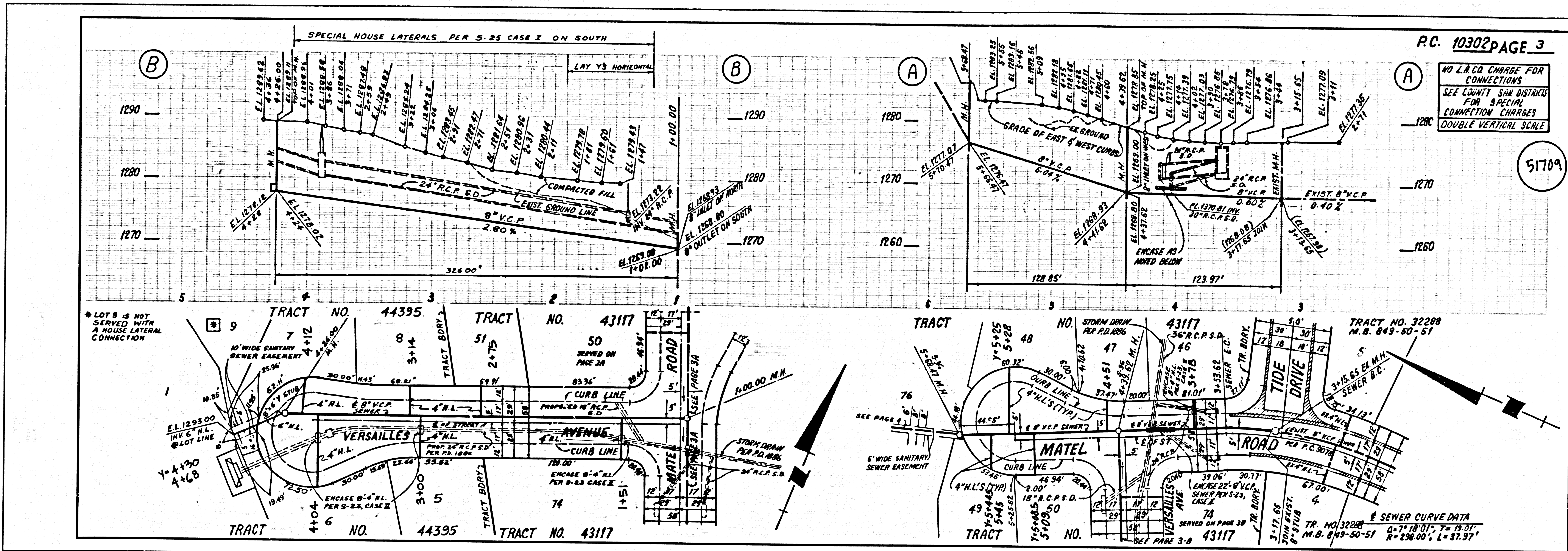
PREPARED IN THE OFFICES OF
 SIKAND ENGINEERING ASSOCIATES
 15130 BURBANK BLVD VAN NUYS, CALIFORNIA 91406 (818) 787-8550
 BY: *[Signature]* REG. C. E. No. E1823

THE FOLLOWING LISTED STANDARD PLANS ON FILE IN THE OFFICE OF THE COUNTY ENGINEER SHALL APPLY IN THE CONSTRUCTION OF THIS PROJECT:

| | |
|--|------|
| MINIMUM PUBLIC SAFETY REQUIREMENTS | 8-1 |
| BRICK MANHOLES | 8-2 |
| STANDARD MANHOLES END | 8-3 |
| SEWERS FOR STEEP SLOPE | 8-4 |
| CHANGING AND ENCLOSURE | 8-5 |
| PIPE ON THE SHOULDER | 8-6 |
| ALLOWABLE TRENCH WIDTHS | 8-7 |
| SOCCING MANHOLES FRAME AND COVER | 8-8 |
| NON-IMPEDING PRECAST CONCRETE MANHOLES | 8-9 |
| CHIMNEY PIPE AND SHIM | 8-10 |
| ANCHOR BLOCK | 8-11 |
| EROSION PROTECTION IN STEEP SLOPES | 8-12 |
| SPECIAL HOUSE LATERALS | 8-25 |

COUNTY OF LOS ANGELES, CALIFORNIA
 THOMAS A. TIDE MANSON, DIRECTOR OF PUBLIC WORKS CHARLES W. GARRY, CHIEF ENGINEER
 APPROVED: *[Signature]* 7/11/85 APPROVED: *[Signature]* 7/11/85
 CHECKED: *[Signature]* 5-11-85
 SIK. C.E. NO. 14851
 SANTA CLARITA VALLEY BLDG. DIST. 82

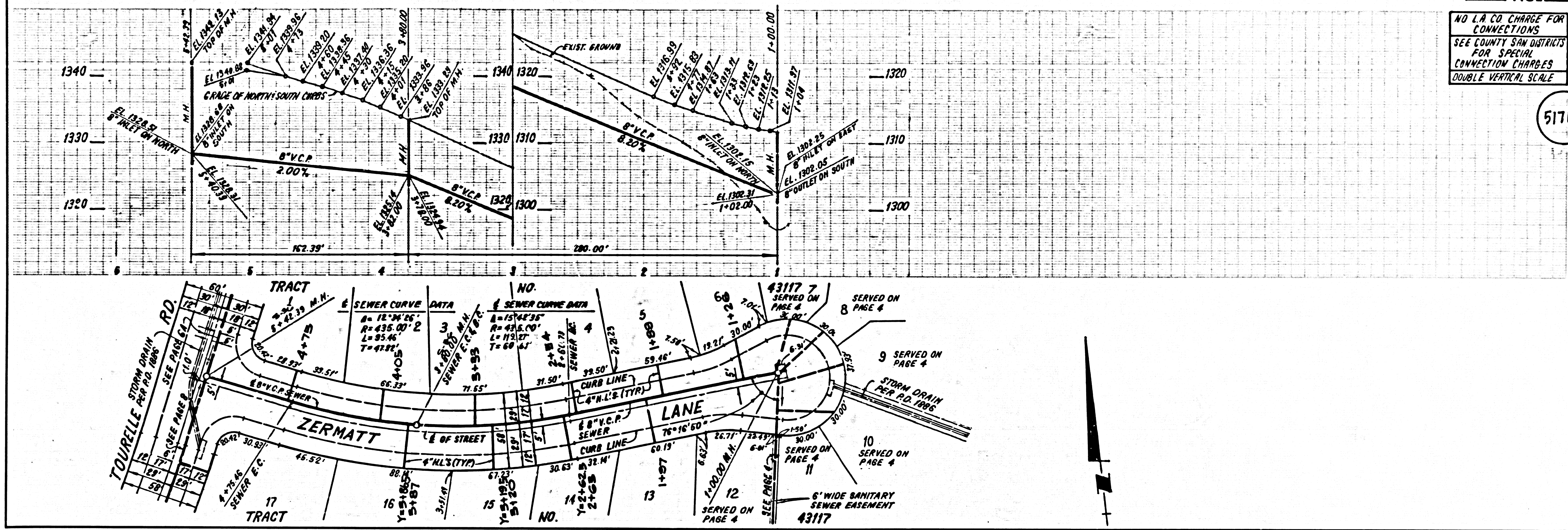




SOUTH 5.9' HIGH ON TOWER

NO L.A. CO. CHARGE FOR CONNECTIONS
SEE COUNTY SAN DISTRICTS FOR SPECIAL CONNECTION CHARGES
DOUBLE VERTICAL SCALE

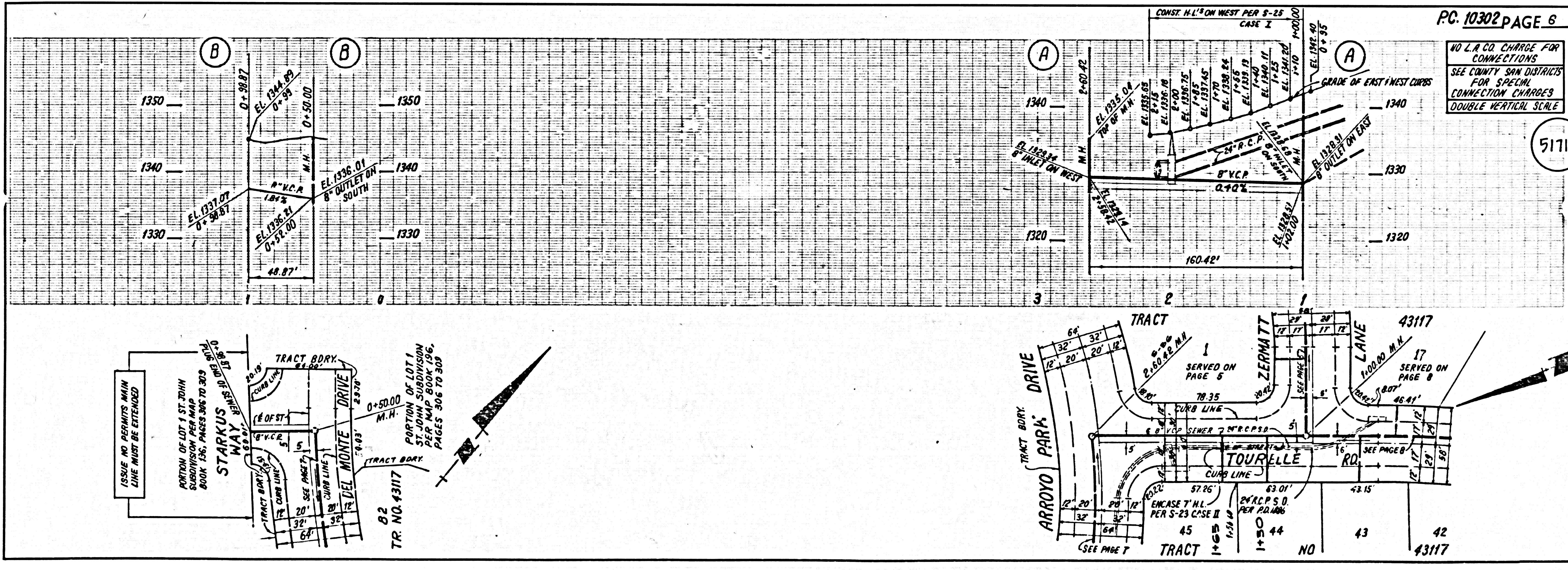
51711



3
S0501 29 T114 ON TRACT

NO L.A. CO. CHARGE FOR CONNECTIONS
SEE COUNTY SAN DISTRICTS FOR SPECIAL CONNECTION CHARGES
DOUBLE VERTICAL SCALE

51712



ISSUE NO. PERMITS MAIN LINE MUST BE EXTENDED

PORTION OF LOT 1 ST. JOHN SUBDIVISION PER MAP BOOK 156, PAGES 306 TO 309

STARKUS WAY

TRACT BDRY

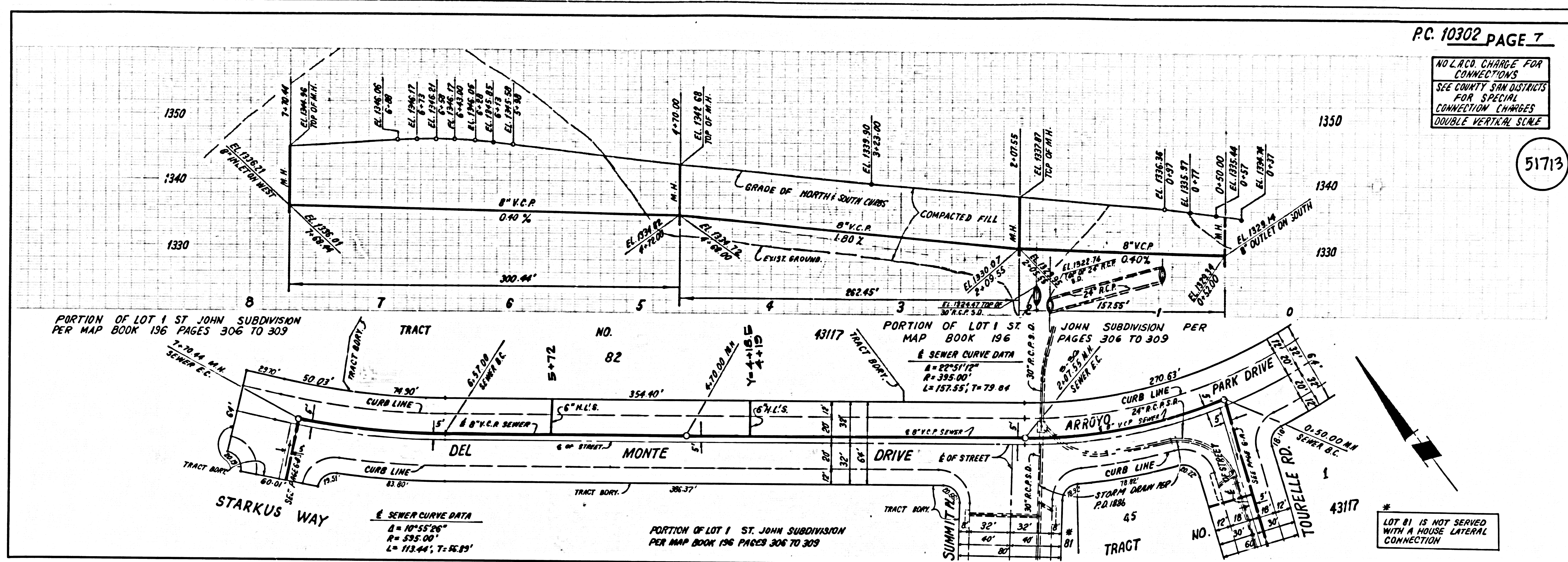
TR. NO. 43117

PORTION OF LOT 1 ST. JOHN SUBDIVISION PER MAP BOOK 156, PAGES 306 TO 309

TR. NO. 43117

NO L.A. CO. CHARGE FOR CONNECTIONS
SEE COUNTY SAN DISTRICTS FOR SPECIAL CONNECTION CHARGES
DOUBLE VERTICAL SCALE

51713

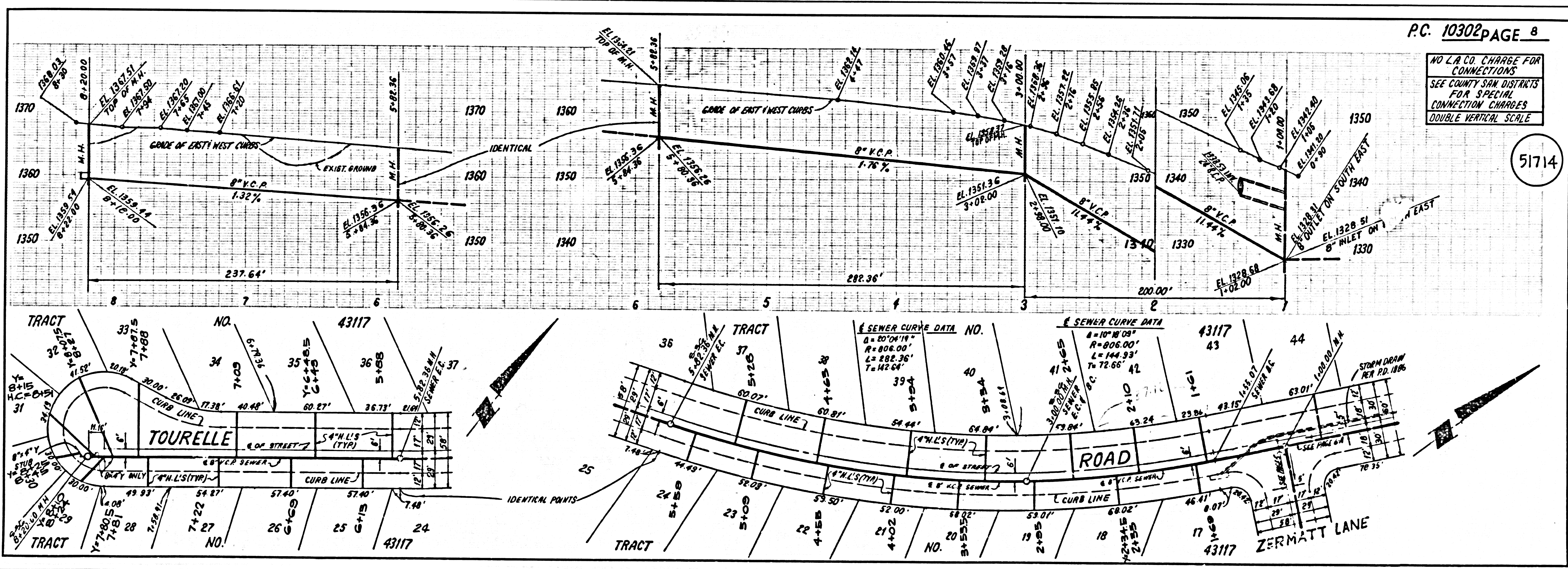


51713
TRACT NO. 43117

LOT 81 IS NOT SERVED WITH A HOUSE LATERAL CONNECTION

NO L.A. CO. CHARGE FOR CONNECTIONS
SEE COUNTY SAN DISTRICTS FOR SPECIAL CONNECTION CHARGES
DOUBLE VERTICAL SCALE

51714

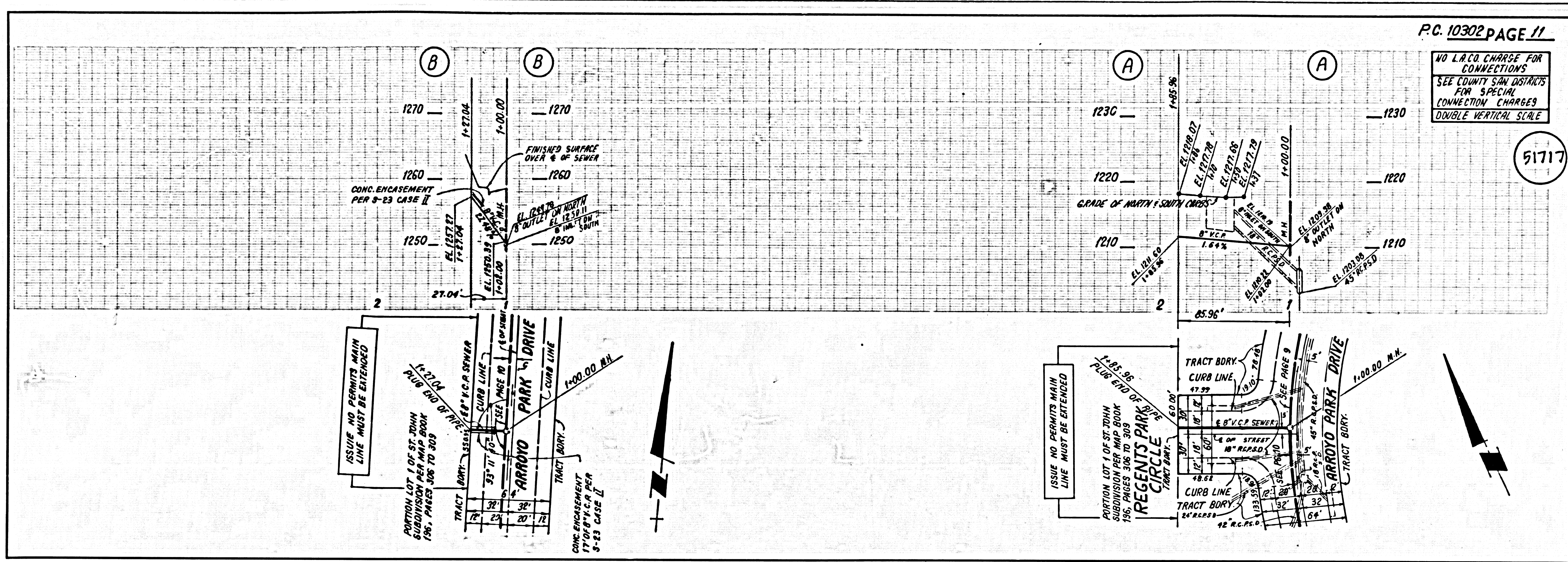


51714
TRACT NO. 43117

L.A. COUNTY ENGINEERING DEPT. 1000 WEST 10TH STREET, LOS ANGELES, CALIF. 90015

NO L.A. CO. CHARGE FOR CONNECTIONS
SEE COUNTY SAN DISTRICTS FOR SPECIAL CONNECTION CHARGES
DOUBLE VERTICAL SCALE

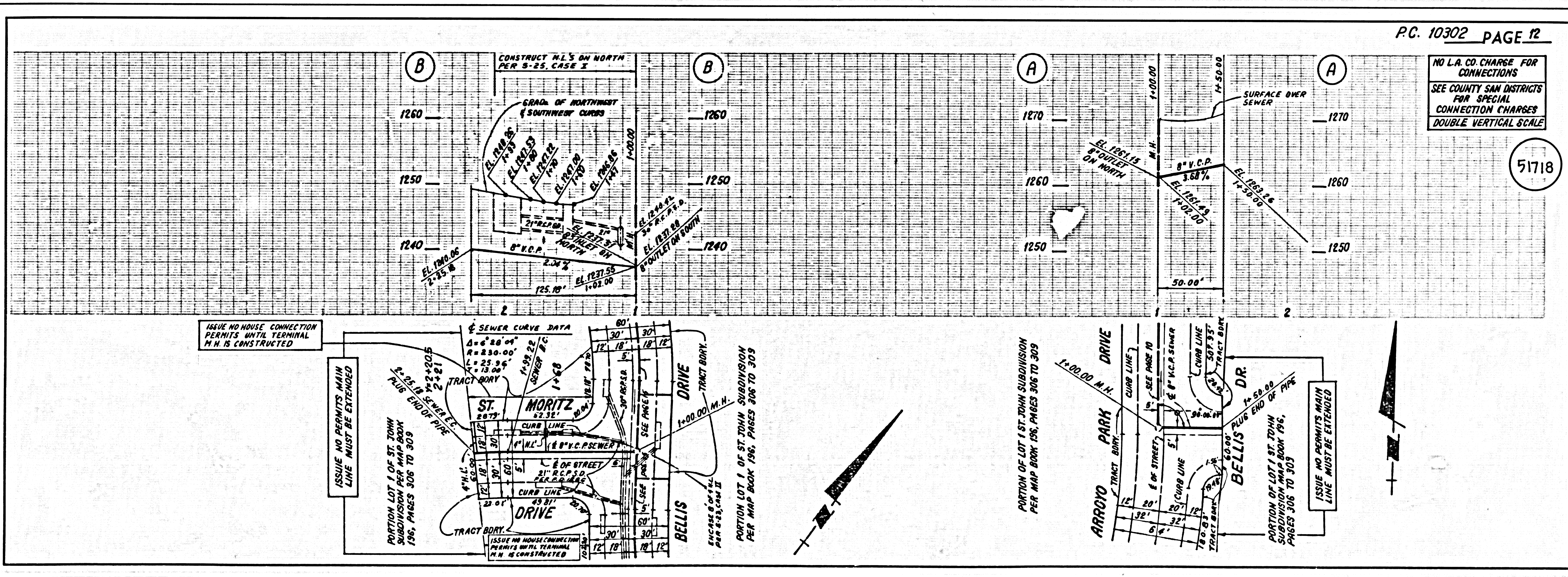
51717



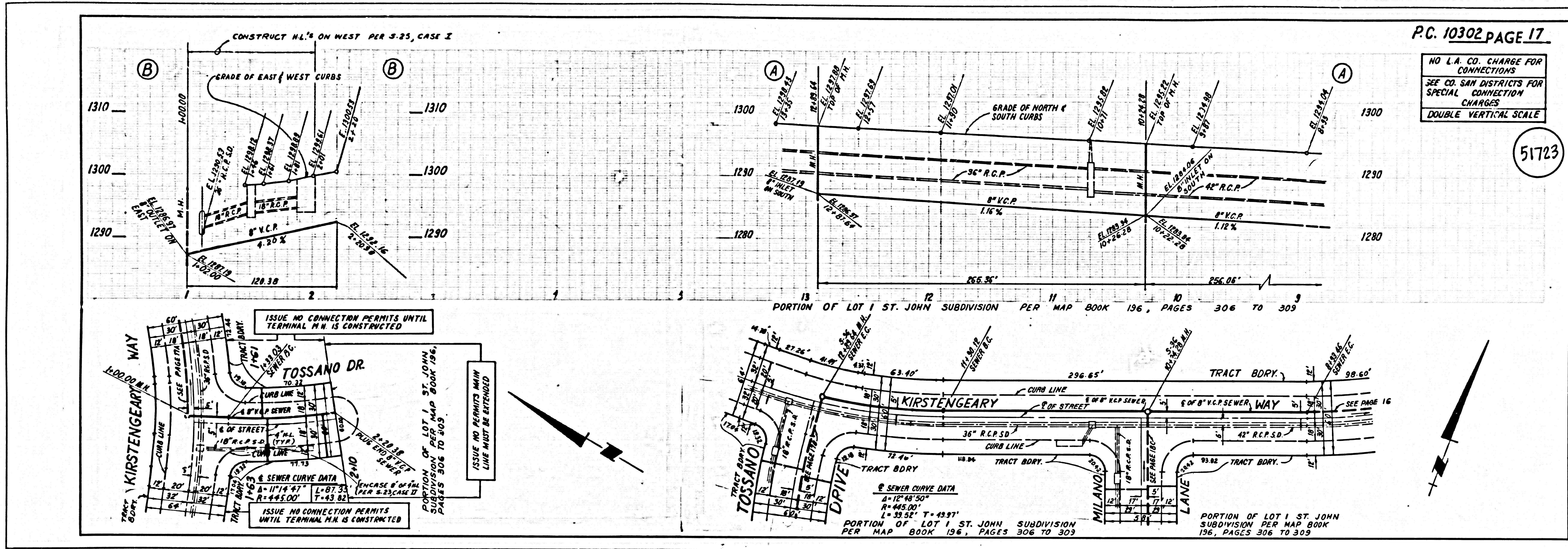
10302
SOSCO
D
10302
D
10302

NO L.A. CO. CHARGE FOR CONNECTIONS
SEE COUNTY SAN DISTRICTS FOR SPECIAL CONNECTION CHARGES
DOUBLE VERTICAL SCALE

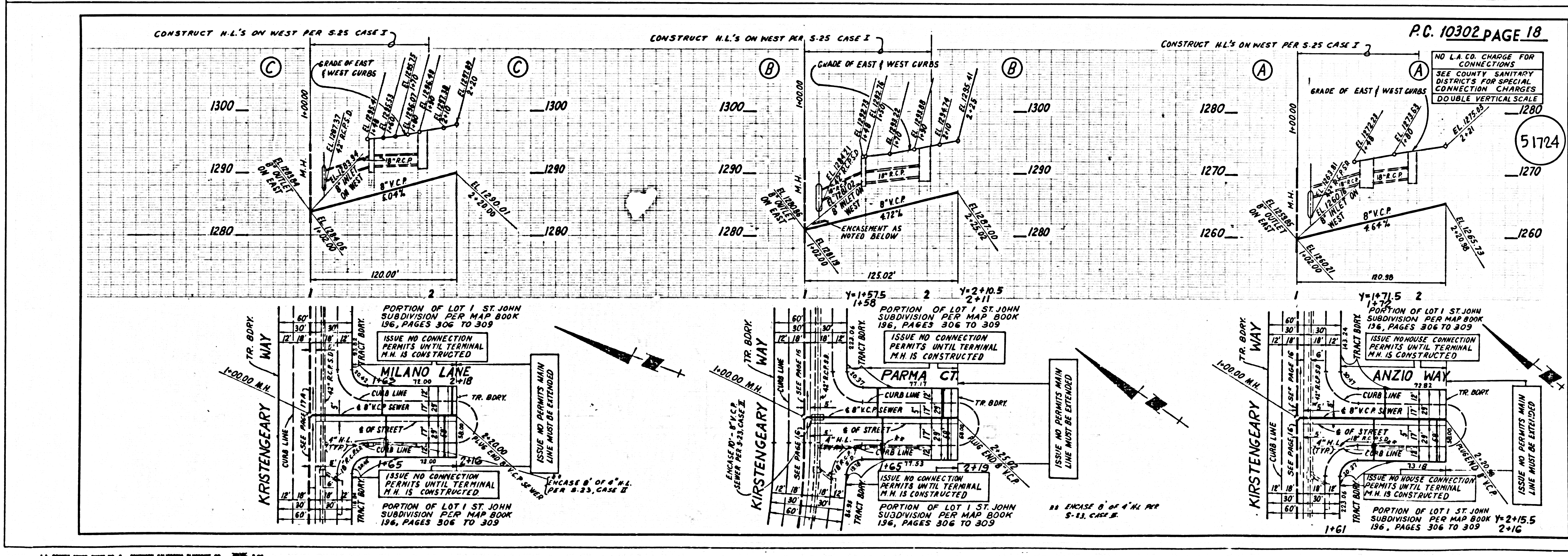
51718



L.A. COUNTY ENGINEERING DEPT. 10302



51723
 50301 59 71164 ON TRACT



51724
 50301 59 71164 ON TRACT