

B.M. CL 3825 ELEV. 1296.201
 LACS B.M. MON IN NE COR CORNER BASE CITY OF LA W.P.
 TOWER #12 A.B. 150 FT. W BOUNDARY CANYON RD E
 Q.L.W.N.W.1/4 CO. SUSAN BETH WAY M.D. (DM 2047 1888)
NEWHALL QUAD. 1983

DOUBLE SCALE

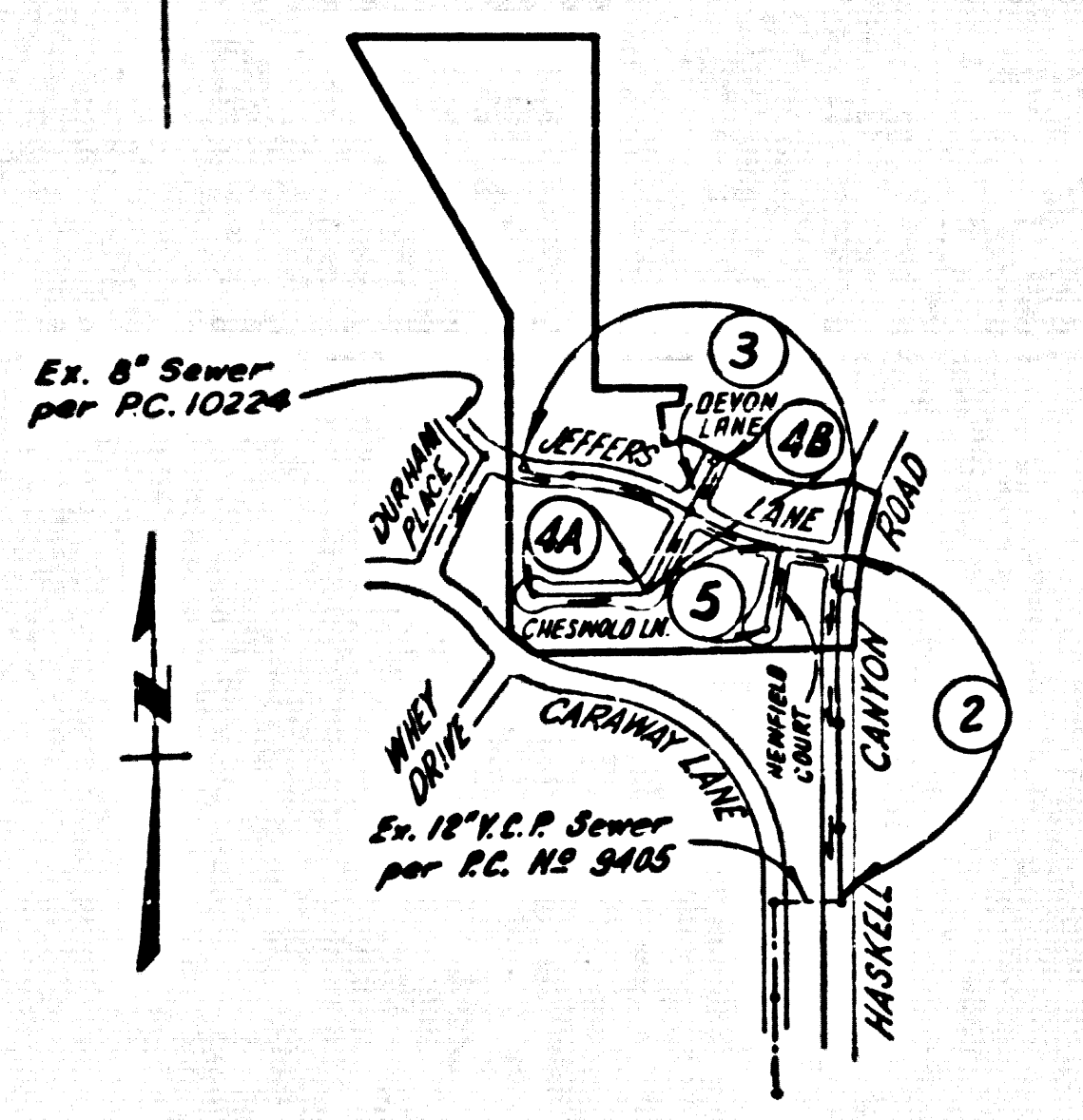
CONSTRUCTION NOTES: (CONT.)

16. WYE BRANCHES ONLY MAY BE USED FOR CONNECTIONS TO MAIN LINE SEWER IF A.B.S.C.P. IS USED.
17. ALL JOINT BETWEEN CAST IRON PIPE AND A.B.S.C.P. SHALL BE MADE WITH APPROVED FITTINGS.
18. FULL COMPLIANCE WITH PART IV OF THE SPECIAL PROVISIONS IS REQUIRED FOR THE INSTALLATION OF A.B.S. COMPOSITE PIPE AND A.B.S. SOLID WALL HOUSE LATERALS.
19. MANHOLE WALKER STOP BRACKETS AND CLAMPS ARE REQUIRED FOR THE CONNECTION OF A.B.S. COMPOSITE PIPE TO MANHOLE STRUCTURES.
20. A.B.S. SOLID WALL PIPE MUST BE USED FOR WYE AND HOUSE LATERAL CONNECTIONS TO A.B.S. COMPOSITE MAINLINE SEWER PIPE.
21. 8 DEGREE DEFLECTION COUPLERS SHALL BE USED TO ACCOMPLISH RADIUS OF CURVATURE LESS THAN 300'.
22. A.B.S. COMPOSITE PIPE SHALL BE BEDDED IN CONFORMANCE WITH THE TABLE IN SECTION B-21 OF PART IV OF SPECIAL PROVISIONS.

NO CONNECTION FOR THE DISPOSAL OF INDUSTRIAL WASTES SHALL BE MADE TO SEWERS SHOWN ON THESE DRAWINGS UNTIL A PERMIT FOR INDUSTRIAL WASTEWATER DISCHARGE HAS BEEN ISSUED BY THE SANITATION DISTRICTS FOR SAID CONNECTION

BEFORE BREAKING INTO OR CONSTRUCTION ON A COUNTY SANITATION DISTRICT SEWER AND PRIOR TO FINAL ACCEPTANCE OF THE PROJECT, SANITATION DISTRICT INSPECTOR SHALL BE NOTIFIED BY PHONE (805) 947-5027 SO THAT REQUIRED INSPECTION CAN BE MADE.

LOTS 5A THRU 6S ARE NON-BUILDABLE AND ARE NOT SERVED WITH HOUSE LATERAL CONNECTIONS.



NOTE:
 NUMBERS IN CIRCLES
 INDICATE PAGE NUMBERS

INDEX MAP
TRACT No 43101
P.C. No 10318
 Scale: 1"=600'

REVISION No 1 DATE: 8/20/67
 PG. 2 ELIMINATE ENCASUREMENT & INSTALL 14' OF 8" D.I.P. @ STA. 7+22

APPROVED *Sally G. Holc* 8/21/67
 DEPARTMENT OF PUBLIC WORKS

GENERAL NOTES:

1. ELEVATIONS ARE IN FEET ABOVE U.S.C. & G.S. SEA LEVEL DATUM OF 1929.
2. NO REVISIONS SHALL BE MADE IN THESE PLANS WITHOUT THE APPROVAL OF THE DIRECTOR OF PUBLIC WORKS.
3. NO REPRESENTATIVE OF THE COUNTY ENGINEER WILL SURVEY OR LAY OUT ANY PORTION OF THE WORK.
4. GRADES TO WHICH THIS IMPROVEMENT IS TO BE CONSTRUCTED ARE SHOWN ON PLANS AND PROFILES. GRADE POINTS FOR TOP OF CURBS, CENTER LINE OF STREETS, OR CENTER LINE OF ALLEYS ARE SHOWN BY CIRCLES ON PROFILES AT ALL POINTS BETWEEN DESIGNATED POINTS THE GRADE SHALL BE ESTABLISHED SO AS TO CONFORM TO A STRAIGHT LINE DRAWN BETWEEN SAID DESIGNATED POINTS.
5. THE PRIVATE ENGINEER SHALL FURNISH THE DEPT. OF PUBLIC WORKS WITH BRICK MANHOLES AND CONNECTIONS FOR ALL HOUSE LATERALS AND WYE BRANCHES AND SHALL PROVIDE STAKES TO BE SET AT THE PROPER LOCATIONS WITH STATING PLANT MARKS. ALL HOUSE LATERALS SHALL BE CONSTRUCTED IN A STRAIGHT ALIGNMENT AT RIGHT ANGLES FROM THE MAIN LINE SEWER EXCEPT AS SHOWN ON THE PLANS. HOUSE LATERAL BRANCH CHANGES SHALL NOT HAVE AN ANGLE OF LESS THAN 25° WITH THE MAIN LINE SEWER. ANY CHANGE IN ALIGNMENT SHALL BE REQUESTED IN WRITING BY THE PRIVATE ENGINEER.
6. THE PRIVATE ENGINEER SHALL FURNISH THE HOUSE LATERAL DEPTH AT THE PROPERTY LINE BELOW THE TOP OF CURB ELEVATION FOR EACH HOUSE LATERAL ON THE GRADE SHEET.
7. BEFORE LAYING THE REPAIRS, THE CONTRACTOR SHALL OBTAIN A PERMIT TO EXCAVATE IN CITY STREETS FROM THE ROAD ELEMENT OF THE L.A. CO. DEPT. OF PUBLIC WORKS, DISTRICT OFFICE NO. 8, AND PAY A FEE TO THE DIRECTOR OF PUBLIC WORKS, 2250 ALCAZAR ST., LOS ANGELES, CALIF. (900) 590-1111. UNDER THE COST OF CONSTRUCTION INSPECTION AND RECORD PLANS.
8. IF WORK IS TO BE DONE IN A STATE HIGHWAY A PERMIT MUST BE OBTAINED FROM THE STATE OF CALIFORNIA, DIVISION OF HIGHWAYS, 120 SOUTH SPRING STREET, LOS ANGELES, CALIFORNIA.
9. APPROVAL OF THIS PLAN BY THE COUNTY OF LOS ANGELES DOES NOT CONSTITUTE A REPRESENTATION AS TO THE ACCURACY OF THE LOCATION OF OR THE EXISTENCE OR NON-EXISTENCE OF ANY UNDERGROUND UTILITY PIPE OR STRUCTURE WITHIN THE LIMITS OF THIS PROJECT. THIS NOTE APPLIES TO ALL PAGES.
10. REFER TO SECTION 714 OF THE STANDARD SPECIFICATIONS REGARDING SAFETY CADDIES.
11. PRIOR TO THE ISSUANCE OF THE REQUIRED SEWER CONSTRUCTION PERMIT THE CONTRACTOR SHALL OBTAIN AND FILE WITH THE DEPT. OF PUBLIC WORKS COPIES OF A PERMIT TO EXCAVATE IN CITY STREETS FROM THE ROAD ELEMENT IN THE DEPT. OF PUBLIC WORKS OF WORKERS COMPENSATION INSURANCE WITH THE DEPARTMENT OF PUBLIC WORKS, 2250 ALCAZAR ST., BOX A 203, LOS ANGELES, CALIFORNIA 90001. NAMED AS THE CERTIFICATE HOLDER TO BE NOTIFIED BY AIR MAIL TO CANCELLATION OF POLICY.

CONSTRUCTION NOTES:

1. WORK SHALL BE CONSTRUCTED ACCORDING TO THE STANDARD SPECIFICATIONS FOR PUBLIC WORKS CONSTRUCTION - 65 PART IV WITH THE EXCEPTIONS OF THE L.A. COUNTY DEPT. OF PUBLIC WORKS SPECIAL PROVISIONS FOR THE CONSTRUCTION OF SANITARY SEWERS DATED SEPT. 27, 1978 AND SHALL BE PROVIDED ONLY IN THE PRESENCE OF THE DEPARTMENT OF PUBLIC WORKS.
2. THE CONTRACTOR SHALL NOTIFY THE CONSTRUCTION DIVISION BY TELEPHONE 947-5027 AT LEAST TWENTY-FOUR HOURS BEFORE STARTING ANY WORK UNDER THIS CONTRACT.
3. HOUSE LATERALS TO BE CONSTRUCTED WITH INVERTS AT PROPERTY LINE 4 FEET BELOW CURB GRADE EXCEPT AS NOTED.
4. WYE OR TEE BRANCHES MAY BE USED FOR CONNECTIONS TO MAINLINE SEWERS EXCEPT AS NOTED.
5. ALL STRUCTURES SHALL BE EITHER BRICK MANHOLES PER S-3 OR PRECAST CONCRETE MANHOLES PER S-28, EXCEPT AS NOTED.
6. PROVIDE STAKES ON THE PROPERTY LINE OR PROPERTY LINE PRODUCED AT RIGHT ANGLES TO THE SEWER LINE AT THE CENTER LINE OF EACH MANHOLE.
7. MANHOLE TOPS IN UNIMPROVED RIGHTS OF WAY TO BE SIX INCHES ABOVE FINISHED GRADE.
8. UNIMPROVED CLAY PIPE JOINTS SHALL BE TYPE "D" OR "D" PER STANDARD SPECIFICATIONS SECTION 208-2.
9. IF A POWER POLE IS WITHIN THREE FEET OF THE SEWER, THE SEWER SHALL BE ENCASED PER S-28 CASE II TWO FEET ON EACH SIDE FROM THE POINT OF INTERFERENCE.
10. IF DURING THE COURSE OF CONSTRUCTION IT IS DETERMINED THAT THERE IS LESS THAN FOUR FEET OF COVER OVER THE TOP OF A MAIN LINE OR HOUSE LATERAL SEWER WHICH IS NOT NOTED ON THE PLANS, THE PIPE SHALL BE ENCASED PER S-28 CASE I UNLESS OTHERWISE APPROVED BY THE DIRECTOR OF PUBLIC WORKS.
11. ALL JOINTS BETWEEN CAST IRON PIPE AND VITRIFIED CLAY PIPE SHALL BE MADE WITH A RUBBER SLEEVE JOINT, TYPE "C" OR "D", (WITH BUSHING IF NECESSARY) PER STANDARD SPECIFICATIONS SECTION 208-2.
12. SEWERS TO BE TESTED FOR LEAKAGE PER SECTION 208-1.4 OF THE STANDARD SPECIFICATIONS AND SPECIAL PROVISIONS.
13. RESURFACE ALL TRENCHES WITHIN PAVED AREAS TO MEET L.A. COUNTY PUBLIC WORKS OR CALIFORNIA STATE HIGHWAY REQUIREMENTS IN ACCORDANCE WITH PERMITS.
14. FULL COMPLIANCE WITH SECTION 208-1.1.1.1 OF THE STANDARD SPEC. WILL BE REQUIRED FOR BACKFILL IN STREETS. CERTIFICATION OF BACKFILL COMPACTION AND SAND EQUIVALENTS BY A QUALIFIED, REGISTERED TESTING LABORATORY SHALL BE PROVIDED BY THE PERMITTEE PRIOR TO THE ISSUANCE OF A CERTIFICATE OF PARTIAL ACCEPTANCE.
15. SPECIAL BACKFILL IN BASEMENT CONSTRUCTION: (A) BACKFILL TRENCH AND REPLACE OTHER EARTH SO AS TO ACHIEVE THE NATURAL OR FINISHED GRADES AND SLOPES SHOWN ON THE GRADING PLANS APPROVED FOR THIS DEVELOPMENT BY THE BUILDING AND SAFETY DIVISION. (B) ALL BACKFILL AND EARTH REPLACED SHALL BE COMPACTED TO A MINIMUM OF 90% OF MAXIMUM DENSITY PER A.S.T.M. STD. METHOD. (C) ANY SPECIAL BACKFILL AS MODIFIED, ACCEPTABLE CERTIFICATION OF SUCH COMPACTION SHALL BE SUBMITTED TO THE CONSTRUCTION DIVISION.

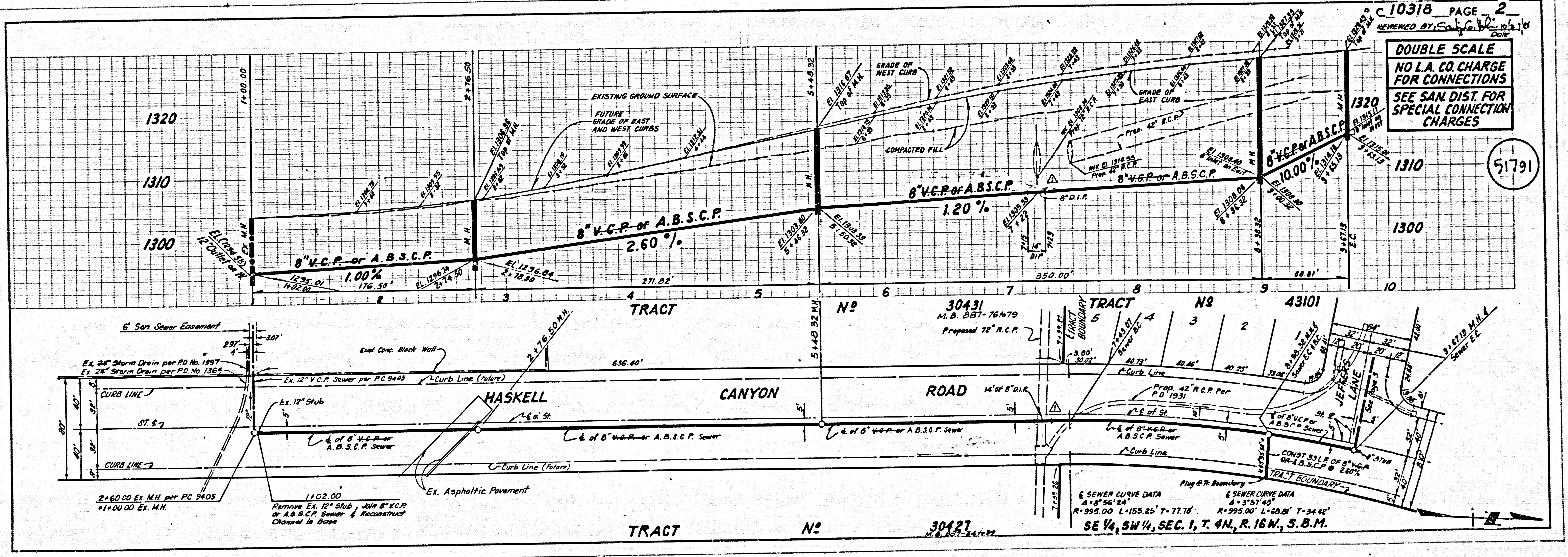
TRACT No 43101
PRIVATE CONTRACT NO. 10318
INDEX A-93
 W.S. 62
 3 SHEETS, 5 PAGES

SCALE: VERT. 1"=4'
 HORIZ. 1"=40'
 OCT. 1, 1964
 PREPARED IN THE OFFICES OF
ENGINEERING SERVICE CORPORATION
 6111 W. 10TH STREET, LOS ANGELES, CALIF. 90048
 TEL. (213) 417-7355
 BY: *J. K. Hamilton*
 REG. C.E. No. 13095

THE FOLLOWING LATEST REVISED STANDARD PLANS ON FILE IN THE OFFICE OF THE COUNTY ENGINEER SHALL APPLY IN THE CONSTRUCTION OF THIS PROJECT:

LEGEND	6-1
MINIMUM PUBLIC SAFETY REQUIREMENTS	6-2
BRICK MANHOLE	6-3
STANDARD MANHOLE STEP	6-7
ROOFING FOR SEWER PIPE	6-11
CALLING AND ENCASUREMENT	6-12
WYE OR TEE SUPPORT	6-13
ALLOWABLE TRENCH WIDTHS	6-14
LOCKING MANHOLE PLATE AND COVER	6-15
NON-REINFORCED PRECAST CONCRETE MANHOLE	6-16
BRICKMAN PER S-28 OF CAL. SEWER PERM.	6-18

COUNTY OF LOS ANGELES, CALIFORNIA
 THOMAS A. TIDENKSON, DIRECTOR OF PUBLIC WORKS
 CHARLES W. CARRY, CHIEF ENGINEER
 APPROVED *Carl L. Blum* 11/4/64
 APPROVED *Sally G. Holc* 11/4/64
 CHECKED: *Henry C. Anderson* 10-30-64
 REG. C.E. NO. 17536
 Santa Clarita Valley BLDG. DIST. 8-2



DOUBLE SCALE
 NO L.A. CO. CHARGE
 FOR CONNECTIONS
 SEE SAN. DIST. FOR
 SPECIAL CONNECTION
 CHARGES

SEWER CURVE DATA
 Δ = 8° 54' 24"
 R = 995.00' L = 155.25' T = 77.76'
 SE 1/4, SW 1/4, SEC. 1, T. 4N., R. 16W., S.B.M.

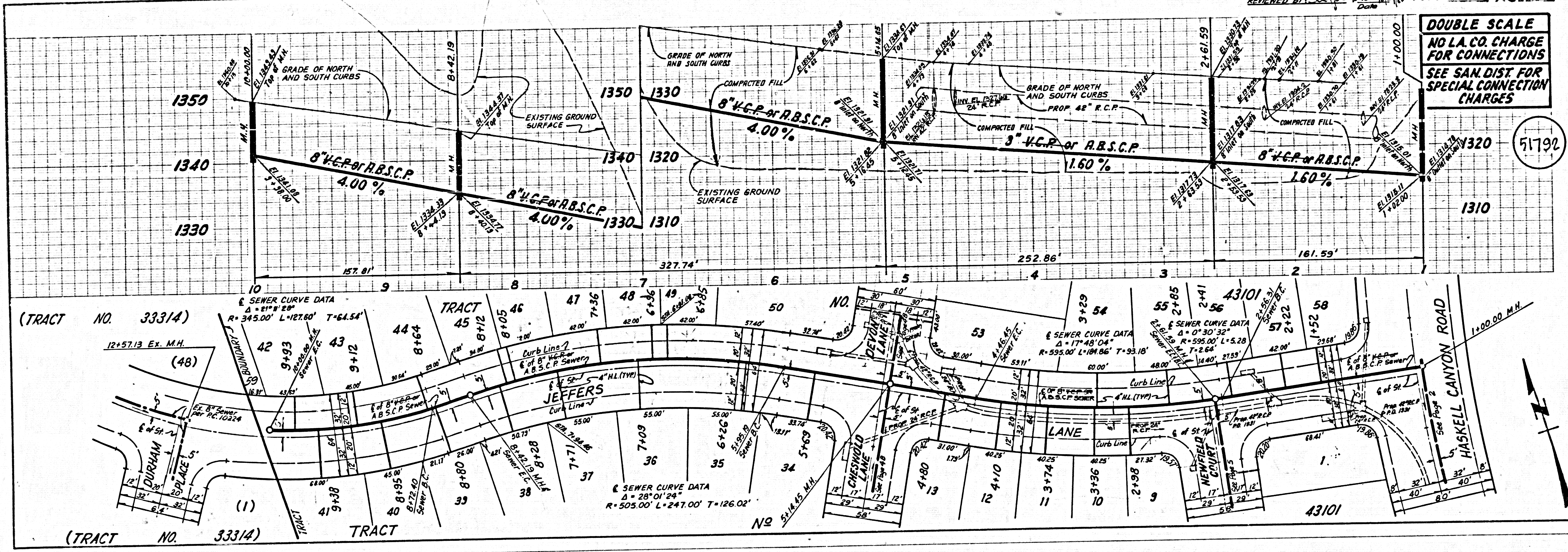
ES&C

PLC

M3

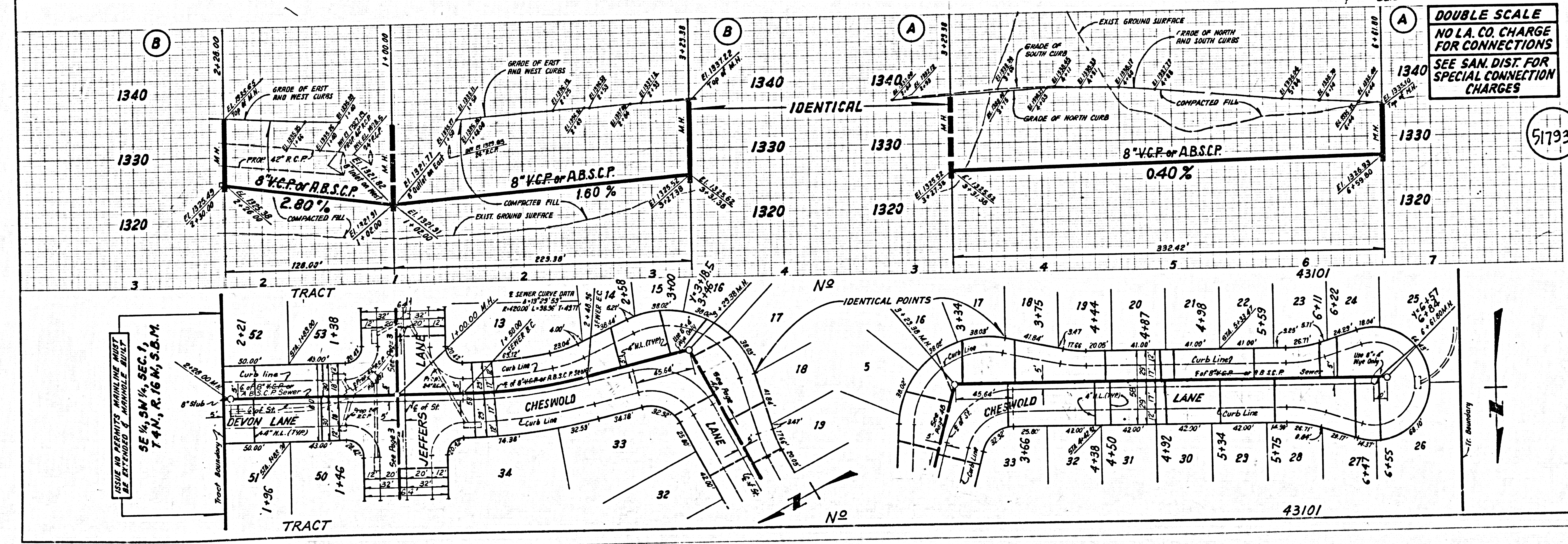
M3

M3



DOUBLE SCALE
 NO L.A. CO. CHARGE
 FOR CONNECTIONS
 SEE SAN. DIST. FOR
 SPECIAL CONNECTION
 CHARGES

51792



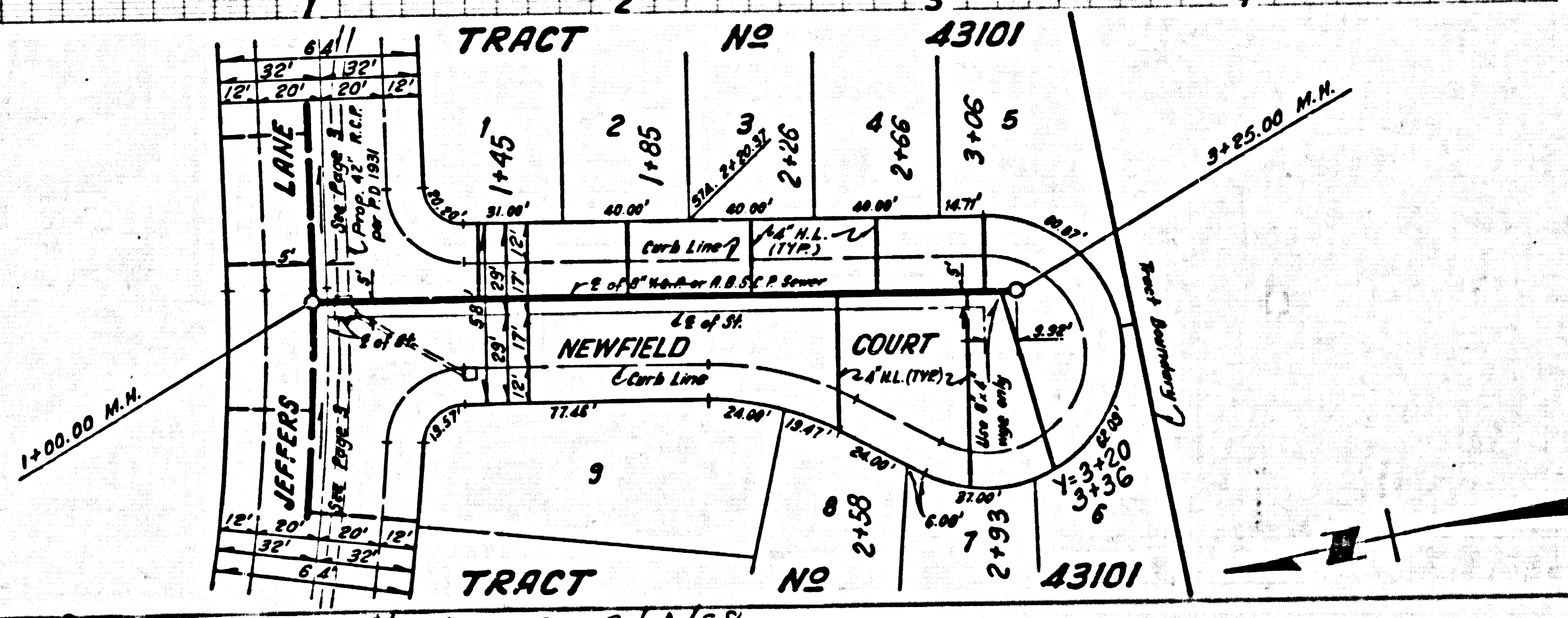
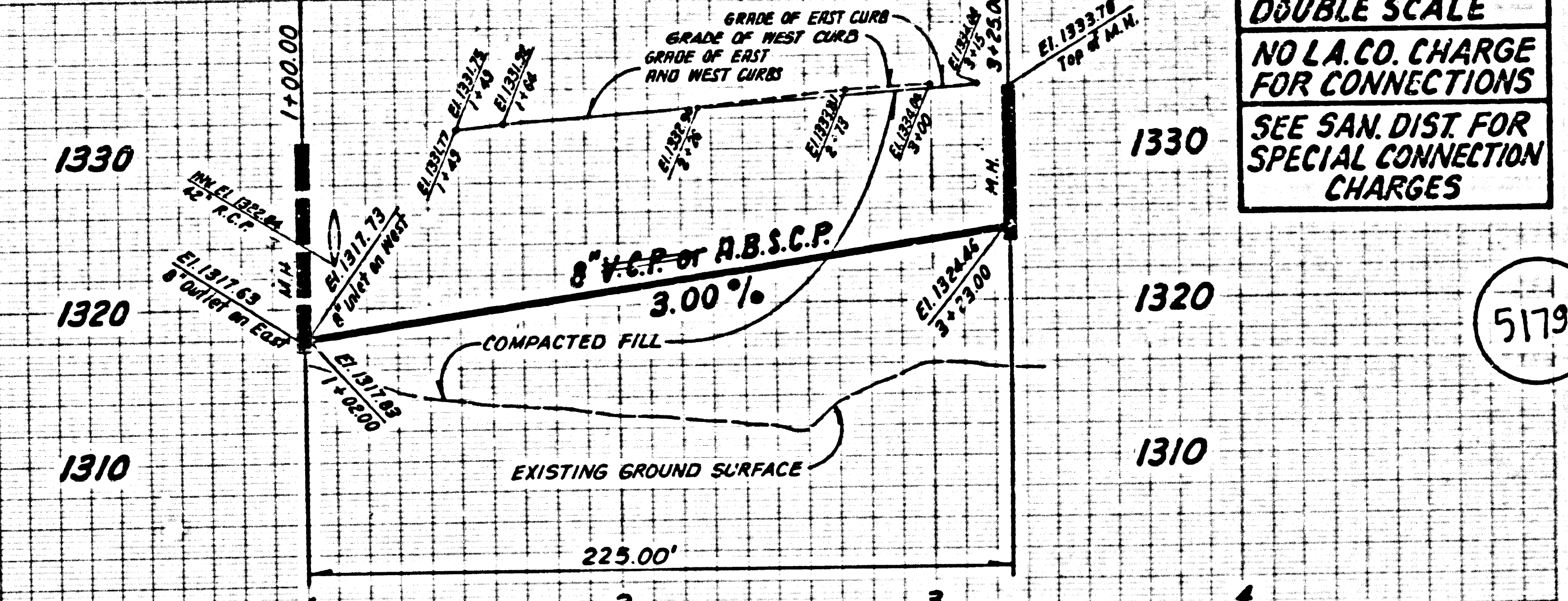
DOUBLE SCALE
 NO L.A. CO. CHARGE
 FOR CONNECTIONS
 SEE SAN. DIST. FOR
 SPECIAL CONNECTION
 CHARGES

51793

S
 DIC01 34 1018 5A 13A1

DOUBLE SCALE
NO L.A. CO. CHARGE
FOR CONNECTIONS
SEE SAN. DIST FOR
SPECIAL CONNECTION
CHARGES

51794



NOTE: PG 5 - NOT 100% AS OF 3/14/88

3

TRACT NO 43101 PG 10318

RECO

PAE
M3

NO