

B.M. C.O. 3911 ELEV. 895.556
L & T 1/4 E. END C.B. 44 FT 8" x
94 FT W. C.L. 1ST GRAND AVE.
DIAMOND BAR BLVD UMD BN C-123
OTTERBEIN QUAD. 19 75

PRIVATE ENGINEER'S NOTICE TO CONTRACTORS

The existence and location of any underground utility pipes or structures shown on these plans are obtained by a search of the available records. To the best of our knowledge there are no existing utilities except as shown on these plans. The contractor is required to take due precautionary measures to protect the utility lines shown and any other lines not of record or not shown on these plans. The contractor shall be responsible for notifying "UNDERGROUND SERVICE ALERT" at 1-800-422-4133 two working days prior to any excavation or construction.

[Signature]
Registered Engineer R.C.E. No. 19233

GENERAL NOTES CONT'D.

12. ALL REFERENCES ON THIS PLAN TO THE COUNTY ENGINEER, THE ROAD DEPARTMENT, OR THE FLOOD CONTROL DISTRICT SHALL APPLY TO THOSE APPROPRIATE SECTIONS OF THE DEPARTMENT OF PUBLIC WORKS.

CONSTRUCTION NOTES CONT'D.

- 16. FULL COMPLIANCE WITH PART IV OF THE SPECIAL PROVISIONS IS REQUIRED FOR THE INSTALLATION OF A.B.S. COMPOSITE PIPE.
 - 17. MANHOLE WATER STOP GASKETS AND CLAMPS ARE REQUIRED FOR THE CONNECTION OF A.B.S. COMPOSITE PIPE TO MANHOLE STRUCTURES.
 - 18. A.B.S. SOLID WALL PIPE MUST BE USED FOR VIE AND HOUSE LATERAL CONNECTIONS TO A.B.S. COMPOSITE MAINLINE SEWER PIPE.
 - 19. A.B.S. COMPOSITE PIPE SHALL BE INSTALLED IN CONFORMANCE WITH THE TABLE IN SECTION 201-3.1 OF PART IV OF THE SPECIAL PROVISIONS.
 - 20. THREE GASKET DEFLECTION COUPLERS ARE REQUIRED FOR RADIUS OF CURVATURE LESS THAN 300 FEET WHEN USING 8" A.B.S. COMPOSITE PIPE.
 - 21. NO CONNECTIONS FOR DISPOSAL OF INDUSTRIAL WASTE IS ALLOWED IF A.B.S. COMPOSITE PIPE IS USED.
 - 22. SEWER LINE CURVATURE SHALL NOT BE ACTIVELY BY PULLING OF JOINTS OR BY USING PIPE LACK UNDER BEING PLASTIC PIPE INCLUDING A.B.S. COMPOSITE PIPE.
- NO CONNECTION FOR THE DISPOSAL OF INDUSTRIAL WASTES SHALL BE MADE TO SEWERS SHOWN ON THESE DRAWINGS UNTIL A PERMIT FOR INDUSTRIAL WASTEWATER DISCHARGE HAS BEEN ISSUED BY THE SANITATION DISTRICTS FOR SAID CONNECTION.
- BEFORE BREAKING INTO OR CONSTRUCTION ON A COUNTY SANITATION DISTRICT SEWER AND PRIOR TO FINAL ACCEPTANCE OF THE PROJECT, SANITATION DISTRICT INSPECTOR SHALL BE NOTIFIED BY PHONE 818 - 962-8665 SO THAT REQUIRED INSPECTION CAN BE MADE.

GENERAL NOTES:

- 1. ELEVATIONS ARE IN FEET ABOVE U.S.C. & G.S. SEA LEVEL, DATUM OF 1988.
- 2. NO REVISIONS SHALL BE MADE IN THESE PLANS WITHOUT THE APPROVAL OF THE PUBLIC WORKS DEPT.
- 3. NO REPRESENTATIVE OF THE COUNTY ENGINEER WILL SURVEY OR LAY OUT ANY PORTION OF THE WORK.
- 4. GRADES TO WHICH THIS IMPROVEMENT IS TO BE CONSTRUCTED ARE SHOWN ON PLANS AND PROFILES. GRADE POINTS FOR TOP OF CURBS, CENTER LINE OF STREETS, OR CENTER LINE OF ALLEYS ARE SHOWN BY CIRCLES ON PROFILES. AT ALL POINTS BETWEEN DESIGNATED POINTS THE GRADE SHALL BE ESTABLISHED SO AS TO CONFORM TO A STRAIGHT LINE DRAWN BETWEEN SAID DESIGNATED POINTS.
- 5. THE PRIVATE ENGINEER SHALL FURNISH THE COUNTY ENGINEER WITH GRADE SHEETS AND STATIONING FOR ALL HOUSE LATERALS AND "C" OR "D" BRANCHES AND SHALL PROVIDE STAKES FOR THEM AT THEIR PROPER LOCATIONS WITH STATIONING PLACES MARKED ALL HOUSE LATERALS SHALL BE CONSTRUCTED IN A STRAIGHT ALIGNMENT AT RIGHT ANGLES FROM THE MAIN LINE SEWER EXCEPT AS SHOWN ON THE PLANS. HOUSE LATERALS FROM CHIMNEYS SHALL NOT HAVE AN ANGLE OF LESS THAN 45° WITH THE MAIN LINE SEWER. ANY CHANGE IN ALIGNMENT SHALL BE REQUESTED IN WRITING BY THE PRIVATE ENGINEER.
- 6. THE PRIVATE ENGINEER SHALL FURNISH THE HOUSE LATERAL DEPTH AT THE PROPERTY LINE BELOW THE TOP OF CURB ELEVATION FOR EACH HOUSE LATERAL ON THE GRADE SHEET.
- 7. BEFORE WORK CAN BE STARTED, THE CONTRACTOR MUST OBTAIN A PERMIT TO EXCAVATE IN COUNTY STREETS FROM THE L.A. COUNTY ROAD DEPT. DISTRICT OFFICE NO. 1 AND PAY A FEE TO THE COUNTY ENGINEER, 580 S. VERMONT AVENUE, LOS ANGELES, CA 90008. TO COVER THE COST OF CONSTRUCTION INSPECTION AND RECORD PLANS.
- 8. IF WORK IS TO BE DONE IN A STATE HIGHWAY AREA, PERMITS MUST BE OBTAINED FROM THE STATE OF CALIFORNIA, DIVISION OF HIGHWAYS, 120 SOUTH SPRING STREET, LOS ANGELES, CALIFORNIA.
- 9. APPROVAL OF THIS PLAN BY THE COUNTY OF LOS ANGELES DOES NOT CONSTITUTE A REPRESENTATION AS TO THE ACCURACY OF THE LOCATION OF OR THE EXISTENCE OR NON-EXISTENCE OF ANY UNDERGROUND UTILITY PIPE, OR STRUCTURE WITHIN THE LIMITS OF THIS PROJECT. THIS NOTE APPLIES TO ALL PAGES.
- 10. REFER TO SECTION 104.1 OF THE STANDARD SPECIFICATIONS REGARDING SAFETY ORDERS.
- 11. PRIOR TO THE ISSUANCE OF THE REQUIRED SEWER CONSTRUCTION PERMIT, THE CONTRACTOR SHALL OBTAIN AND FILE WITH THE COUNTY ENGINEER COPIES OF A PERMIT TO EXCAVATE IN COUNTY STREETS FROM THE LOS ANGELES COUNTY ROAD DEPARTMENT, A PERMIT FOR EXCAVATIONS AND TRENCHES FROM THE STATE OF CALIFORNIA, DIVISION OF INDUSTRIAL SAFETY AND A CERTIFICATE OF WORKERS COMPENSATION INSURANCE WITH THE DEPARTMENT OF COUNTY ENGINEER, 580 SOUTH VERMONT, LOS ANGELES, CALIFORNIA 90008. NAMED AS THE CERTIFICATE HOLDER TO BE NOTIFIED 30 DAYS PRIOR TO CANCELLATION OF POLICY.

CONSTRUCTION NOTES:

- 1. WORK SHALL BE CONSTRUCTED ACCORDING TO THE STANDARD SPECIFICATIONS FOR PUBLIC WORKS CONSTRUCTION (SWS) EDITION SUPPLEMENTS AND COUNTY ENGINEER SPECIAL PROVISIONS FOR THE CONSTRUCTION OF SANITARY SEWERS DATED SEPTEMBER 21, 1978, AND SHALL BE PROSECUTED ONLY IN THE PRESENCE OF THE COUNTY ENGINEER.
- 2. THE CONTRACTOR SHALL NOTIFY THE CONSTRUCTION DIVISION OF PUBLIC WORKS DEPT. TEL. (213) 228-9281 AT LEAST 24 HOURS BEFORE STARTING ANY WORK UNDER THIS CONTRACT.
- 3. HOUSE LATERALS TO BE CONSTRUCTED WITH INVERTS AT PROPERTY LINE 8 FEET BELOW CURB GRADE EXCEPT AS NOTED.
- 4. WRIT ON THE BRANCHES MAY BE USED FOR CONNECTIONS TO MAINLINE SEWERS EXCEPT AS NOTED.
- 5. ALL STRUCTURES SHALL BE EITHER BRICK, MANHOLE FRAMES, OR MANHOLE BOXES, EXCEPT AS NOTED.
- 6. PROVIDE STAKES ON THE PROPERTY LINE OR PROPERTY LINES PRODUCED AT RIGHT ANGLES TO THE SEWER LINE AT THE CENTER LINE OF EACH MANHOLE.
- 7. MANHOLE TOPS IN UNIMPROVED RIGHTS OF WAY TO BE SIX INCHES ABOVE FINISHED GRADE.
- 8. WYTHRED CLAY PIPE JOINTS SHALL BE TYPE "C" OR "D" PER STANDARD SPECIFICATIONS SECTION 201-3.2.
- 9. IF A POWER POLE IS WITHIN THREE FEET OF THE SEWER, THE SEWER SHALL BE ENCASED PER SWS CASE 8, TWO FEET ON EACH SIDE FROM THE POINT OF INTERFERENCE.
- 10. IF DURING THE COURSE OF CONSTRUCTION IT IS DETERMINED THAT THERE IS LESS THAN FOUR FEET OF COVER OVER THE TOP OF A MAIN LINE OR HOUSE LATERAL SEWER WHICH IS NOT INDICATED ON THE PLANS, THE PIPE SHALL BE ENCASED PER SWS CASE 8, UNLESS OTHERWISE APPROVED BY THE COUNTY ENGINEER.
- 11. ALL JOINTS BETWEEN CAST IRON PIPE AND WYTHRED CLAY PIPE SHALL BE MADE WITH A RUBBER SLEEVE JOINT, TYPE "C" OR "D", WITH BEARING IN ACCORDANCE WITH THE STANDARD SPECIFICATIONS SECTION 201-3.2.
- 12. ALL JOINTS BETWEEN CAST IRON PIPE AND A.B.S. PIPE SHALL BE MADE WITH APPROVED FITTINGS.
- 13. SEE SECTION 201-3.2 OF THE SPECIAL PROVISIONS FOR THE STANDARD SPECIFICATIONS.
- 14. RESURFACE ALL TRENCHES WITHIN PAVED AREAS TO MEET L.A. COUNTY ROAD DEPT. OR CALIFORNIA STATE HIGHWAY REQUIREMENTS IN ACCORDANCE WITH PERMITS.
- 15. FULL COMPLIANCE WITH SECTION 201-3.3 OF THE SPECIAL PROVISIONS WILL BE REQUIRED FOR BACKFILL IN STREETS. CERTIFICATION OF BACKFILL COMPACTION AND SAND EQUIVALENTS BY A QUALIFIED, REGISTERED TESTING LABORATORY SHALL BE PROVIDED BY THE PERMITTEE PRIOR TO THE ISSUANCE OF A CERTIFICATE OF PARTIAL ACCEPTANCE.
- 16. SPECIAL BACKFILL IN EXISTING TRENCHES OR BACKFILL TRENCH AND REPLACE OTHER EARTH SO AS TO ACHIEVE THE NATURAL OR FINISHED GRADES AND SLOPES SHOWN ON THE GRADING PLAN APPROVED FOR THE DEVELOPMENT BY THE BUILDING AND SAFETY DIVISION. IF ALL BACKFILL AND EARTH PLACED SHALL BE COMPACTED TO A MINIMUM OF 90% OF MAXIMUM DENSITY PER ASTM METHOD OF TEST D1557. IF APPROVED, ACCEPTABLE CERTIFICATION OF SUCH COMPACTION SHALL BE SUBMITTED TO THE CONSTRUCTION DIVISION OF PUBLIC WORKS DEPT.

DOUBLE SCALE

PROFILE, ALIGNMENT AND GRADE OF
SANITARY SEWERS
TO BE CONSTRUCTED IN

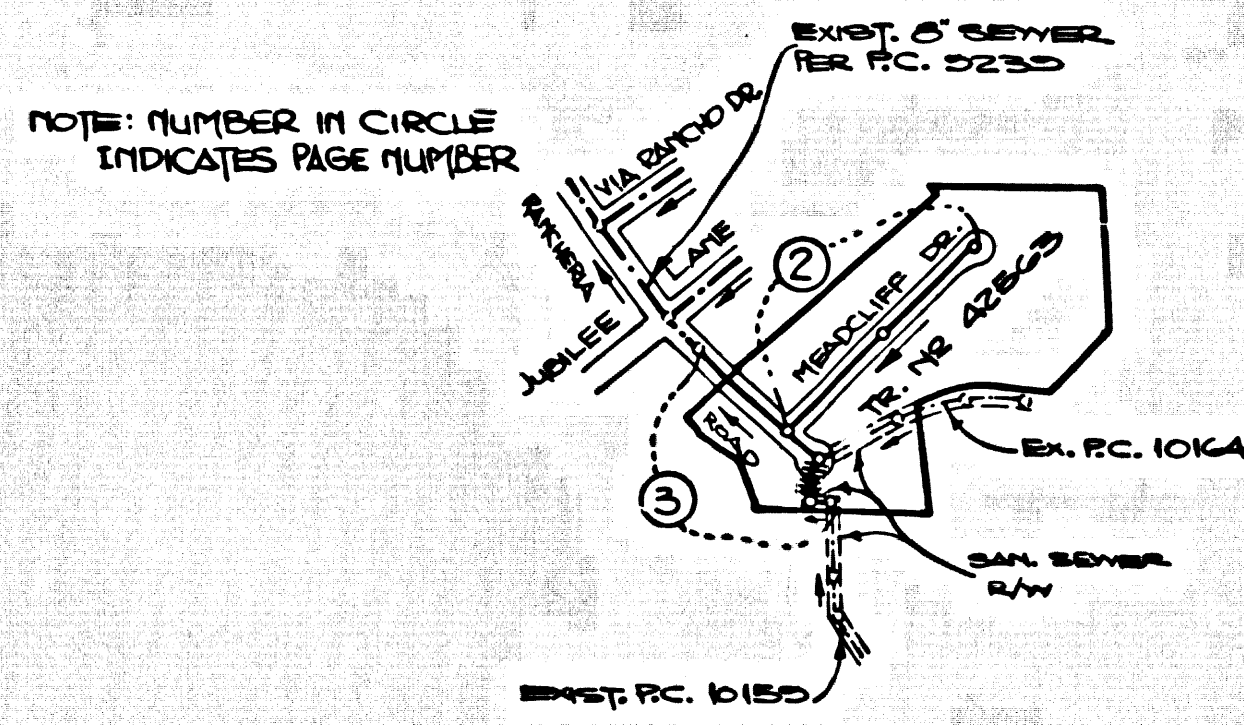
TRACT NO. 42563
PRIVATE CONTRACT NO. 10324

W.S. 20-D, 2, 3
2 SHEETS, 3 PAGES
SCALE: VERT. 1" = 8'
HORIZ. 1" = 40'
NOVEMBER, 1984
PREPARED IN THE OFFICES OF
LIND & HILLERUD, INC.
208 HUNTINGTON DRIVE
SAN MARINO, CA 91108
BY: *[Signature]* REG. C. E. No. 19233
JOHN H. SARRACINO

THE FOLLOWING LATEST REVISED STANDARD PLANS ON FILE IN THE OFFICE OF THE COUNTY ENGINEER SHALL APPLY IN THE CONSTRUCTION OF THIS PROJECT:

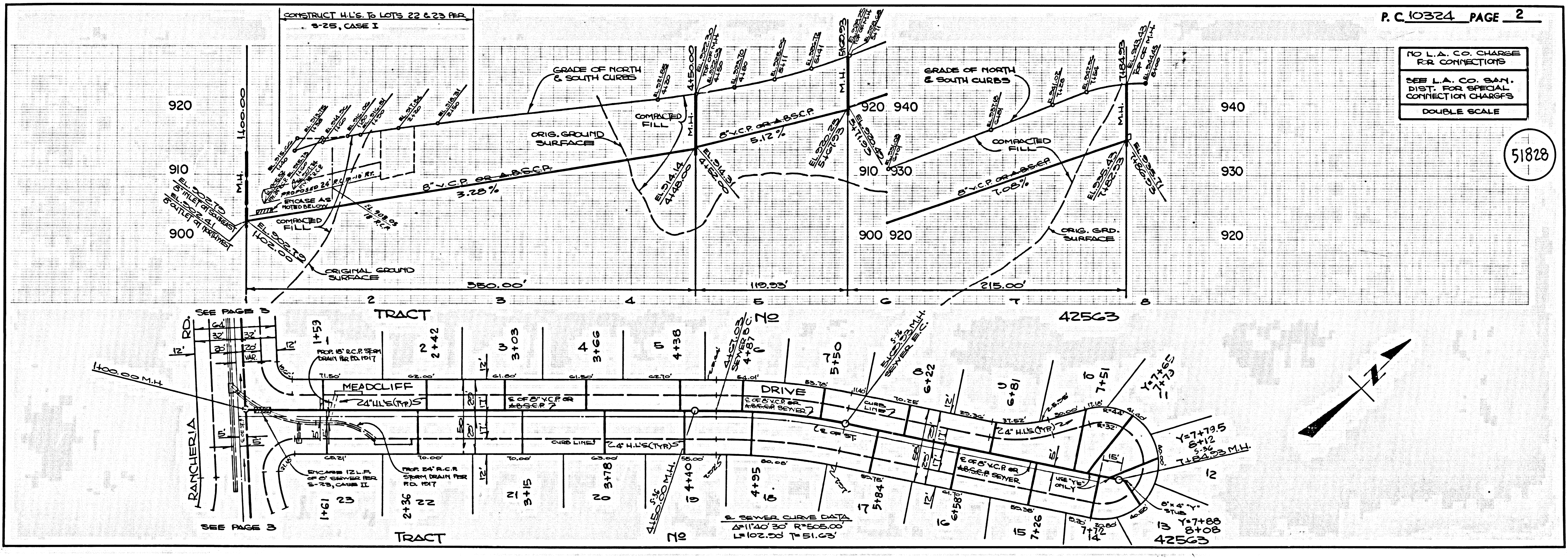
MINIMUM PUBLIC SAFETY REQUIREMENTS	8-1
MINOR MANHOLE	8-2
STANDARD MANHOLE STOP	8-7
BRIDGING FOR SEWER PIPE	8-21
CRACKING AND DISASSEMBLY	8-28
WRIT ON THE SUPPORT	8-28
ALUMINUM FINISH MANHOLE	8-28
LOADING MANHOLE FRAME AND COVER	8-28
NON-REINFORCED PRECAST CONCRETE MANHOLE	8-28
BEDDING REQUIREMENTS FOR PLASTIC PIPE	8-21A

COUNTY OF LOS ANGELES, CALIFORNIA
THOMAS A. TIDEMANSON, DIRECTOR, DEPARTMENT OF PUBLIC WORKS
CHARLES W. GARRY, CHIEF ENGINEER, CO. SAN. NO. 51
APPROVED *[Signature]* DATE *[Date]* APPROVED *[Signature]* DATE *[Date]*
CHECKED *[Signature]* DATE *[Date]*
REG. C.E. NO. 33134
SAN DIMAS BLDG. DIST. 10.00



INDEX MAP
TRACT NO. 42563
P.C. 10324
SCALE: 1" = 400'

REVISION NO. 1 DATE 11-20-87
PAGE 2 - INDICATED REMOVED SEWER LATERAL & 24" CATCH BASIN LOCATIONS ON INDIVIDUAL LOTS BETWEEN STAS. 1+87 & 3+25.
PAGE 3 - MARKED SEWER LINE IN BOTH PLAN & PROFILE TO INDICATE ELIMINATION OF ALL SEWER CONSTRUCTION FROM STA. 2+08 TO STA. 2+42 & RELOCATED LATERALS SERVING LOTS 2+42-25.
PAGE 1 - REVISED INDEX MAP & ADDED THIS REVISION NOTE.
BY: *[Signature]* REGISTERED ENGINEER
APPROVED: *[Signature]* DATE 11-20-87



P.C. 10324 PAGE 2

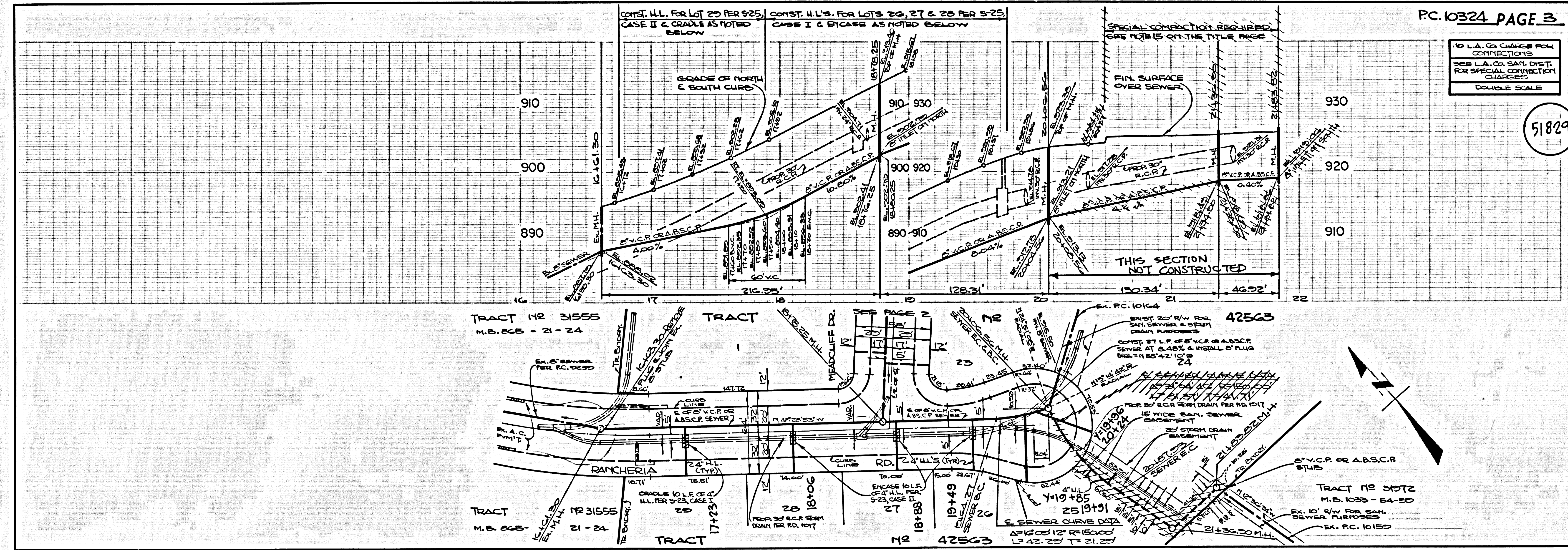
NO L.A. CO. CHARGE FOR CONNECTIONS
SEE L.A. CO. SAN. DIST. FOR SPECIAL CONNECTION CHARGES
DOUBLE SCALE

1

BC 10324

51828

55554 911 TRACT



PC. 10324 PAGE 3

NO L.A. CO CHARGE FOR CONNECTIONS.
SEE L.A. CO SAN. DIST. FOR SPECIAL CONNECTION CHARGES.
DOUBLE SCALE

51829

PAGE

⑤

AS 201 PC 10324

CS 201 911 T 10324