

TO BE CONSTRUCTED IN
TRACT NO. 43529

PRIVATE CONTRACT NO. 10326

W.S.G.2;A-83
 5 SHEETS, 12 PAGES

51471

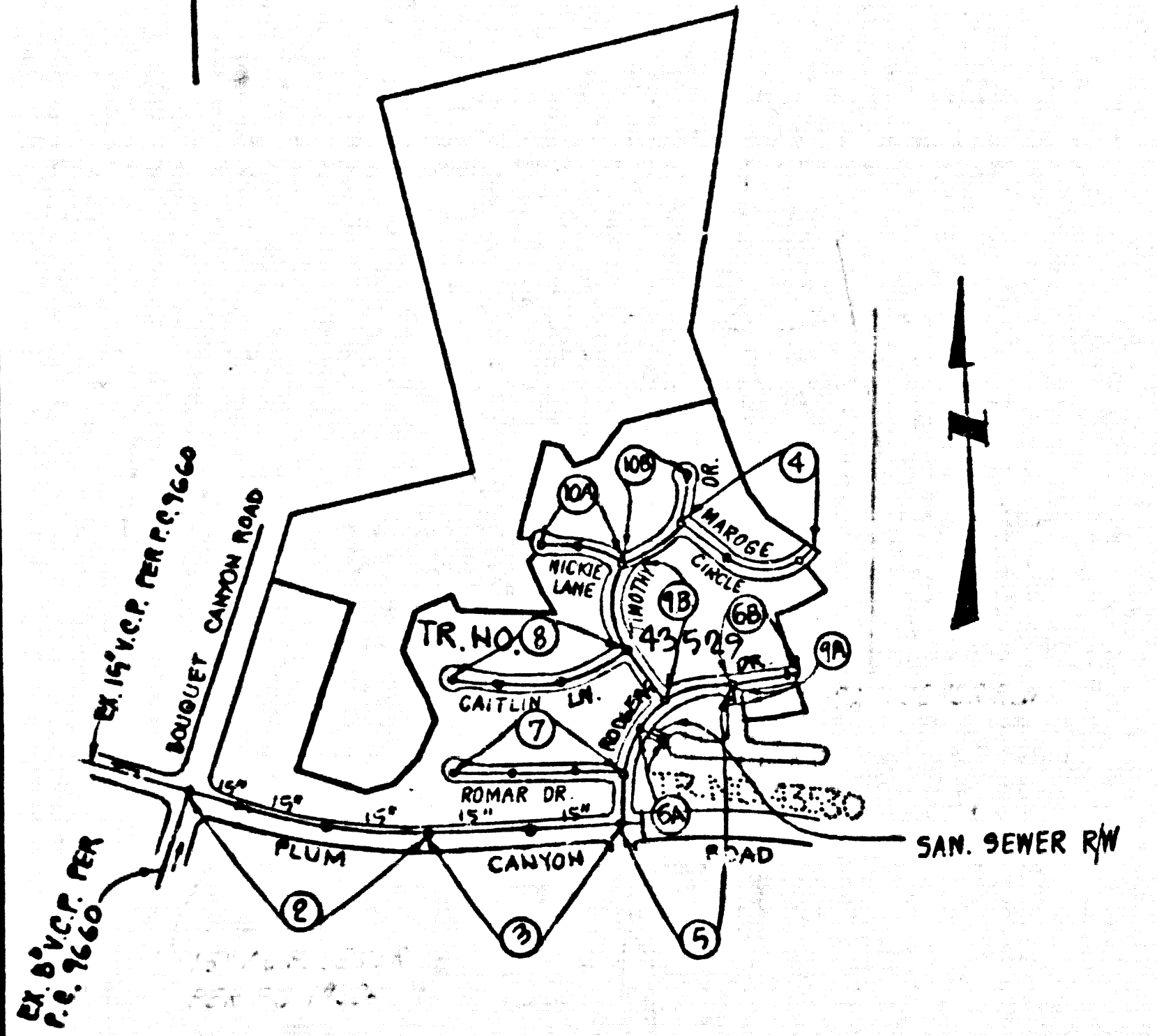
SCALE: VERT. 1"=4'
 HORIZ. 1"=40'
 NOVEMBER, 1984
 PREPARED IN THE OFFICES OF
GRAND ENGINEERING ASSOCIATES
 1523 D SUNBANK BLVD., VAN NUYS
 CALIFORNIA 91411 (818) 787-8550
 BY: *John R. Pina*
 REG. C. E. No. 9312

THE FOLLOWING LATEST REVISION STANDARDS ARE IN USE IN THE OFFICE OF THE DEPT. OF PUBLIC WORKS, WHICH APPLY IN THE CONSTRUCTION OF THIS PROJECT:

STANDARD SPECIFICATIONS FOR PUBLIC WORKS CONSTRUCTION (1983 EDITION) AND REV. BY PUBLIC WORKS DIVISION	5.1
MINIMUM PUBLIC SAFETY DIMENSIONS	5.2
STANDARD MANHOLE SIZES	5.3
STANDARD MANHOLE SETTING	5.4
CHANGING AND ENCASING	5.5
WYTH OF THE SUPPORT	5.6
ALLOWABLE TRENCH WIDTHS	5.7
LOADING MANHOLES, REAR AND COVER	5.8
NON-REINFORCED PRECAST CONCRETE MANHOLE	5.9
REINFORCED PRECAST CONCRETE MANHOLE	5.10
REINFORCED PRECAST CONCRETE MANHOLE	5.11
REINFORCED PRECAST CONCRETE MANHOLE	5.12

COUNTY OF LOS ANGELES, CALIFORNIA
 THOMAS A. TIDEMANSON, DIRECTOR OF PUBLIC WORKS
 CHARLES W. CARRY, CHIEF ENGINEER
 APPROVED: *John R. Pina* 11/1/84
 CHECKED: *Sandy G. Holm* 10-2-84
 REG. C. E. No. 33134
 SANTA CLARITA BLDG. DIST. 82

B.M. CL 3826 ELEV. 1974.659
 LACKED
 TAG. IN CA. 9 FT. 90 B.O.R. 55 FT. 50 & 42 FT.
 W. OF INT. & 80 QUET CYN ROAD & 57 FEET
 JAN. 67.
 NEWHALL QUAD. 1972



INDEX MAP
 SCALE: 1"=600'
 P.C. 10 426
 TRACT NO. 43529

NOTE: NUMBERS IN CIRCLES INDICATE PAGE NUMBERS

DOUBLE SCALE
CONSTRUCTION NOTES: CONT'D

- FULL COMPLIANCE WITH PART II OF THE SPECIAL PROVISIONS IS REQUIRED FOR THE INSTALLATION OF A B.S. COMPOSITE PIPE.
- MANHOLE WATER STOP GASKETS AND CLAMPS ARE REQUIRED FOR THE CONNECTION OF A B.S. COMPOSITE PIPE TO MANHOLE STRUCTURES.
- A B.S. SOLID WALL PIPE MUST BE USED FOR WYE AND HOUSE LATERAL CONNECTIONS TO A B.S. COMPOSITE MAINLINE SEWER PIPE.
- A B.S. COMPOSITE PIPE SHALL BE RECORDED IN CONFORMANCE WITH THE TABLE IN SECTION B-3.1 PART II OF THE SPECIAL PROVISIONS.
- 30 DEGREE DEFLECTION COUPLERS MUST BE USED TO ACCOMPLISH RADIUS OF CURVATURE LESS THAN 360'.

GENERAL NOTES: CONT.

10. ALL REFERENCES ON THIS PLAN TO COUNTY ENGINEER, THE ROAD DEPARTMENT, OR THE FLOOD CONTROL DISTRICT SHALL APPLY TO THOSE APPROPRIATE SECTIONS, OF THE DEPARTMENT OF PUBLIC WORKS.

REVISION NO. 1 DATE: 7-23-84
 PAGE 10A: DELETE HOUSE CONNECTION (4" H.L.) FOR LOT 98
 APPROVED: *Sandy G. Holm* 7-29-84
 DEPT. OF PUBLIC WORKS

REVISION NO. 2 DATE: 5-12-87
 PAGES 1, 8 & 9: REVISED CAITLIN ROAD TO CAITLIN LAKE
 APPROVED: *David R. Hwang* 5/12/87
 DEPT. OF PUBLIC WORKS

NO CONNECTION FOR THE DISPOSAL OF INDUSTRIAL WASTES SHALL BE MADE TO SEWERS SHOWN ON THESE DRAWINGS UNTIL A PERMIT FOR INDUSTRIAL WASTEWATER DISCHARGE HAS BEEN ISSUED BY THE SANITATION DISTRICTS FOR SAID CONNECTION.

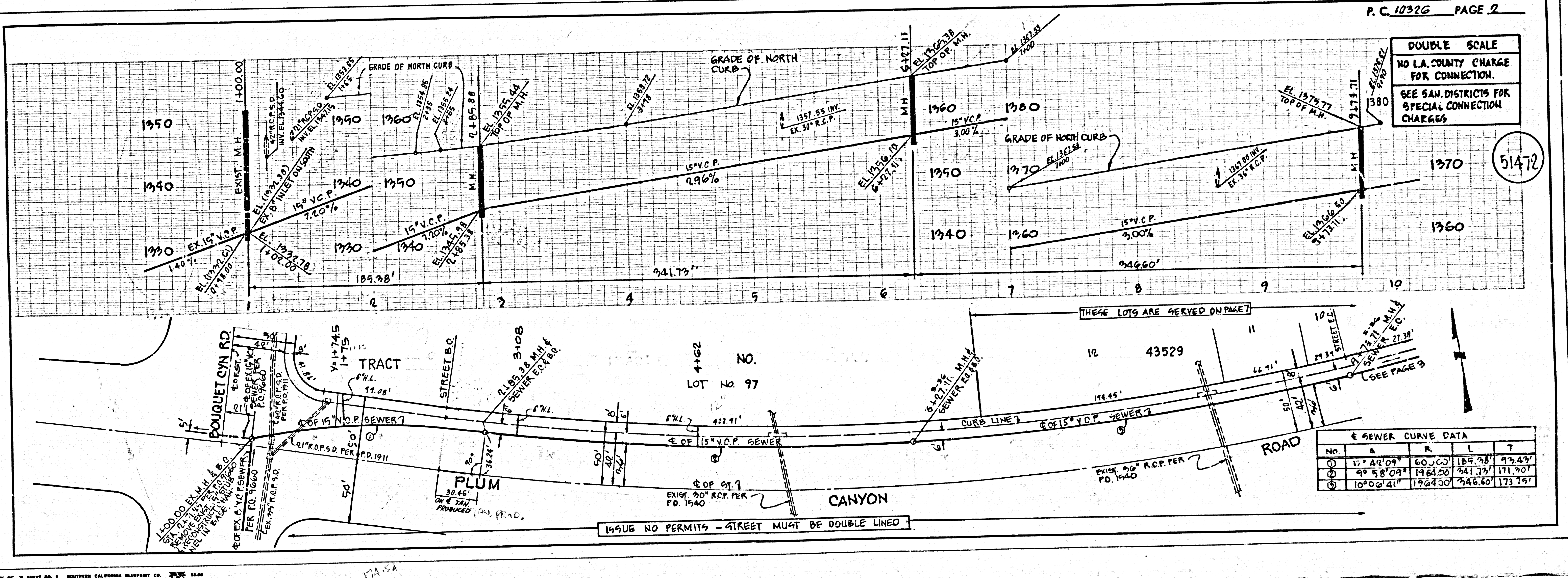
BEFORE BREAKING INTO OR CONSTRUCTION ON A COUNTY SANITATION DISTRICT SEWER AND PRIOR TO FINAL ACCEPTANCE OF THE PROJECT, SANITATION DISTRICT INSPECTOR SHALL BE NOTIFIED BY PHONE 818 - 952-8605 SO THAT REQUIRED INSPECTION CAN BE MADE.

GENERAL NOTES:

- ELEVATIONS ARE IN FEET ABOVE U.S.C. & G.S. MEAN SEA LEVEL DATUM OF 1985.
- NO REVISIONS SHALL BE MADE IN THESE PLANS WITHOUT THE APPROVAL OF THE DEPT. OF PUBLIC WORKS.
- NO REPRESENTATIVE OF THE DEPT. OF PUBLIC WORKS WILL SURVEY OR LAY OUT ANY PORTION OF THE WORK.
- GRADES TO WHICH THE IMPROVEMENT IS TO BE CONSTRUCTED ARE SHOWN ON PLANS AND PROFILES GRADE POINTS FOR TOP OF CURVE, CENTER LINE OF STREETS OR CENTER LINE OF ALLEYS ARE SHOWN BY CIRCLES ON PROFILES AT ALL POINTS BETWEEN DESIGNATED POINTS THE GRADE SHALL BE ESTABLISHED SO AS TO CONFORM TO A STRAIGHT LINE DRAWN BETWEEN SAID DESIGNATED POINTS.
- THE PRIVATE ENGINEER SHALL FURNISH THE WYTH OF PUBLIC WORKS, REINFORCE SHEETS AND STATIONING FOR ALL HOUSE LATERALS AND "Y" OR "T" BRANCHES AND SHALL PROVIDE STAKES FOR THEM AT THEIR PROPER LOCATIONS WITH STATIONING PLAINLY MARKED AND "Y" OR "T" BRANCHES SHALL BE CONSTRUCTED IN A STRAIGHT ALIGNMENT AT RIGHT ANGLES FROM THE MAIN LINE SEWER EXCEPT AS SHOWN ON THE PLANS. HOUSE LATERALS FROM CHIMNEYS SHALL NOT HAVE AN ANGLE OF LESS THAN 45° WITH THE MAIN LINE SEWER. ANY CHANGE IN ALIGNMENT SHALL BE REQUESTED IN WRITING BY THE PRIVATE ENGINEER.
- THE PRIVATE ENGINEER SHALL FURNISH THE HOUSE LATERAL DEPTH AT THE PROPERTY LINE BELOW THE TOP OF CURVE ELEVATION FOR EACH HOUSE LATERAL ON THE GRADE SHEET.
- IF WORK IS TO BE DONE IN A STATE HIGHWAY, A PERMIT MUST BE OBTAINED FROM THE STATE OF CALIFORNIA, DIVISION OF HIGHWAYS, 120 SOUTH SPRING STREET, LOS ANGELES, CALIFORNIA.
- IF WORK IS TO BE DONE IN A COUNTY HIGHWAY, A PERMIT MUST BE OBTAINED FROM THE COUNTY OF LOS ANGELES, DIVISION OF HIGHWAYS, 120 SOUTH SPRING STREET, LOS ANGELES, CALIFORNIA.
- APPROVAL OF THIS PLAN BY THE COUNTY OF LOS ANGELES DOES NOT CONSTITUTE A REPRESENTATION AS TO THE ACCURACY OF THE LOCATION OF OR THE EXISTENCE OR NON-EXISTENCE OF ANY UNDERGROUND UTILITY PIPE, OR STRUCTURE WITHIN THE LIMITS OF THIS PROJECT. THIS NOTE APPLIES TO ALL PAGES.
- REFER TO SECTION 7.6.4.1 OF THE STANDARD SPECIFICATIONS, REGARDING SAFETY ORDERS.
- PRIOR TO THE ISSUANCE OF THE REQUIRED SEWER CONSTRUCTION PERMIT, THE CONTRACTOR SHALL OBTAIN AND FILE WITH THE DEPT. OF PUBLIC WORKS COPIES OF A PERMIT TO EXCAVATE IN COUNTY STREETS FROM THE LOS ANGELES COUNTY ROAD DEPARTMENT, A PERMIT FOR EXCAVATION AND TRENCHING FROM THE STATE OF CALIFORNIA, DIVISION OF INDUSTRIAL SAFETY AND A CERTIFICATE OF WORKERS COMPENSATION INSURANCE WITH THE DEPARTMENT OF PUBLIC WORKS, S.B. 818 - LOS ANGELES, CALIFORNIA 90088 NAMED AS THE CERTIFICATE HOLDER TO BE NOTIFIED 30 DAYS PRIOR TO CANCELLATION OF POLICY.

CONSTRUCTION NOTES:

- WORK SHALL BE CONSTRUCTED ACCORDING TO THE STANDARD SPECIFICATIONS FOR PUBLIC WORKS CONSTRUCTION (1983 EDITION) AND REV. BY PUBLIC WORKS DIVISION SPECIAL PROVISIONS FOR THE CONSTRUCTION OF SANITARY SEWERS DATED SEPT. 24, 1976 AND SHALL BE PROSECUTED ONLY IN THE PRESENCE OF THE COUNTY ENGINEER.
- THE CONTRACTOR SHALL NOTIFY THE COUNTY ENGINEER BY TELEPHONE 281-8282 AT LEAST TWENTY-FOUR HOURS BEFORE STARTING ANY WORK UNDER THE CONTRACT.
- HOUSE LATERALS TO BE CONSTRUCTED WITH INVERTS AT PROPERTY LINE 6 FEET BELOW CURB GRADE EXCEPT AS NOTED.
- WYTH OR THE BRANCHES MAY BE USED FOR CONNECTIONS TO MAINLINE SEWERS EXCEPT AS NOTED.
- WYTH BRANCHES ONLY MAY BE USED FOR CONNECTIONS TO MAINLINE SEWERS PER 8-3.3 EXCEPT AS NOTED.
- ALL STRUCTURES SHALL BE SET BY BRICK MANHOLES PER 8-3.3 EXCEPT AS NOTED.
- PROVIDE STAKES ON THE PROPERTY LINE OR PROPERTY LINES PRODUCED AT RIGHT ANGLES TO THE SEWER LINE AT THE CENTER LINE OF EACH MANHOLE.
- MANHOLE TOPS IN UNIMPROVED RIGHTS OF WAY TO BE SIX INCHES ABOVE FINISHED GRADE.
- WYTHED CLAY PIPE JOINTS SHALL BE TYPE "C" OR "D" PER STANDARD SPECIFICATIONS SECTION 800-4.
- IF A POWER POLE IS WITHIN THREE FEET OF THE SEWER, THE SEWER SHALL BE ENCASED PER 8-3.3, CASE II TWO FEET ON EACH SIDE FROM THE POINT OF INTERFERENCE.
- IF DURING THE COURSE OF CONSTRUCTION IT IS DETERMINED THAT THERE IS LESS THAN FOUR FEET OF COVER OVER THE TOP OF A MAIN LINE OR HOUSE LATERAL SEWER WHICH IS NOT INDICATED ON THE PLAN, THE PIPE SHALL BE ENCASED PER 8-3.3, CASE II UNLESS OTHERWISE APPROVED BY THE DEPT. OF PUBLIC WORKS.
- ALL JOINTS BETWEEN CAST IRON PIPE AND WYTHED CLAY PIPE SHALL BE MADE WITH A RUBBER GASKET JOINT, TYPE "C" OR "D", WITH GASKETS IF NECESSARY PER STANDARD SPECIFICATIONS SECTION 800-4. ALL JOINTS SHALL BE MADE WITH APPROVED FITTINGS.
- ALL JOINTS SHALL BE SET WITH CAST IRON OR PRECAST CONCRETE MANHOLES PER 8-3.3 EXCEPT AS NOTED.
- SEWERS TO BE TESTED FOR LEAKAGE PER SECTION 800-1.2 OF THE STANDARD SPECIFICATIONS AND SPECIAL PROVISIONS.
- REINFORCE ALL TRENCHES WITHIN PAVED AREAS TO MEET L.A. COUNTY ROAD DEPT. OR CALIFORNIA STATE HIGHWAY REQUIREMENTS IN ACCORDANCE WITH PERMITS.
- FULL COMPLIANCE WITH SECTION 800-1.5 OF THE SPECIAL PROVISIONS WILL BE REQUIRED FOR BACKFILL IN STREETS. CERTIFICATION OF BACKFILL COMPACTION AND SAND EQUIVALENTS BY A QUALIFIED, REGISTERED TESTING LABORATORY SHALL BE PROVIDED BY THE PERMITTEE PRIOR TO THE ISSUANCE OF A CERTIFICATE OF PARTIAL ACCEPTANCE.
- SPECIAL BACKFILL IN BASEMENT CONSTRUCTION: (A) BACKFILL TRENCH AND REPLACE OTHER EARTH SO AS TO ACHIEVE THE NATURAL OR FINISHED GRADES AND SLOPES SHOWN ON THE GRADING PLAN APPROVED FOR THE DEVELOPMENT BY THE BUILDING AND SAFETY DIVISION. (B) ALL BACKFILL AND EARTH REPLACED SHALL BE COMPACTED TO A MINIMUM OF 98% OF BACKFILL DENSITY PER A.S.T.M. STD. METHOD OF TEST OR ELSEY AS APPROVED. ACCEPTABLE CERTIFICATION OF SUCH COMPACTION SHALL BE SUBMITTED TO THE CONSTRUCTION DIVISION.



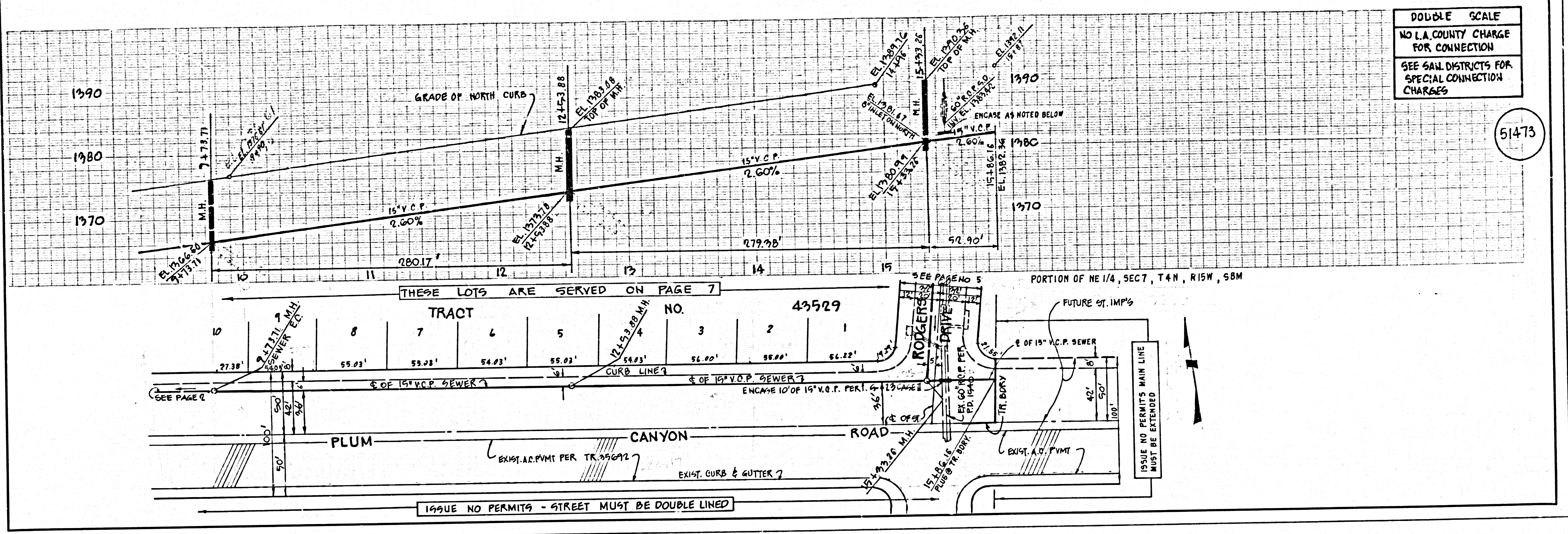
DOUBLE SCALE
 NO L.A. COUNTY CHARGE FOR CONNECTION.
 SEE SAN. DISTRICTS FOR SPECIAL CONNECTION CHARGES

51472

ISSUE NO PERMITS - STREET MUST BE DOUBLE LINED

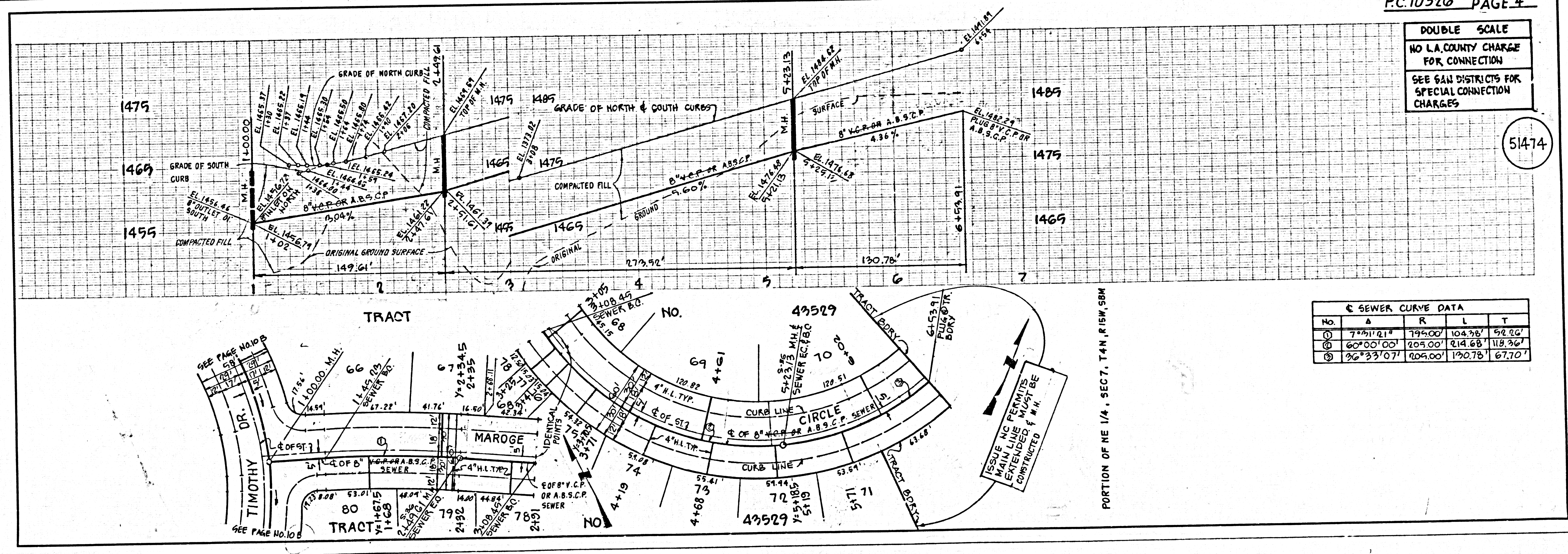
DOUBLE SCALE
 NO L.A. COUNTY CHARGE
 FOR CONNECTION
 SEE SAN DISTRICTS FOR
 SPECIAL CONNECTION
 CHARGES

51473



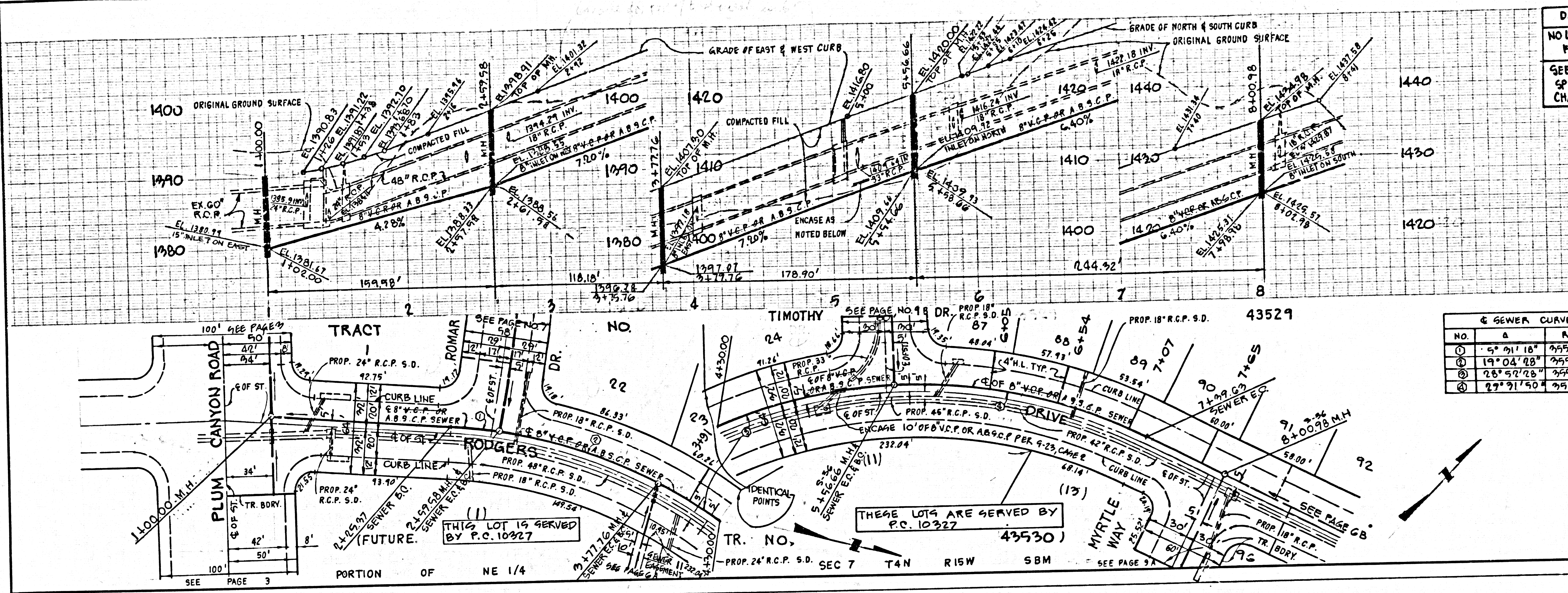
DOUBLE SCALE
 NO L.A. COUNTY CHARGE
 FOR CONNECTION
 SEE SAN DISTRICTS FOR
 SPECIAL CONNECTION
 CHARGES

51474



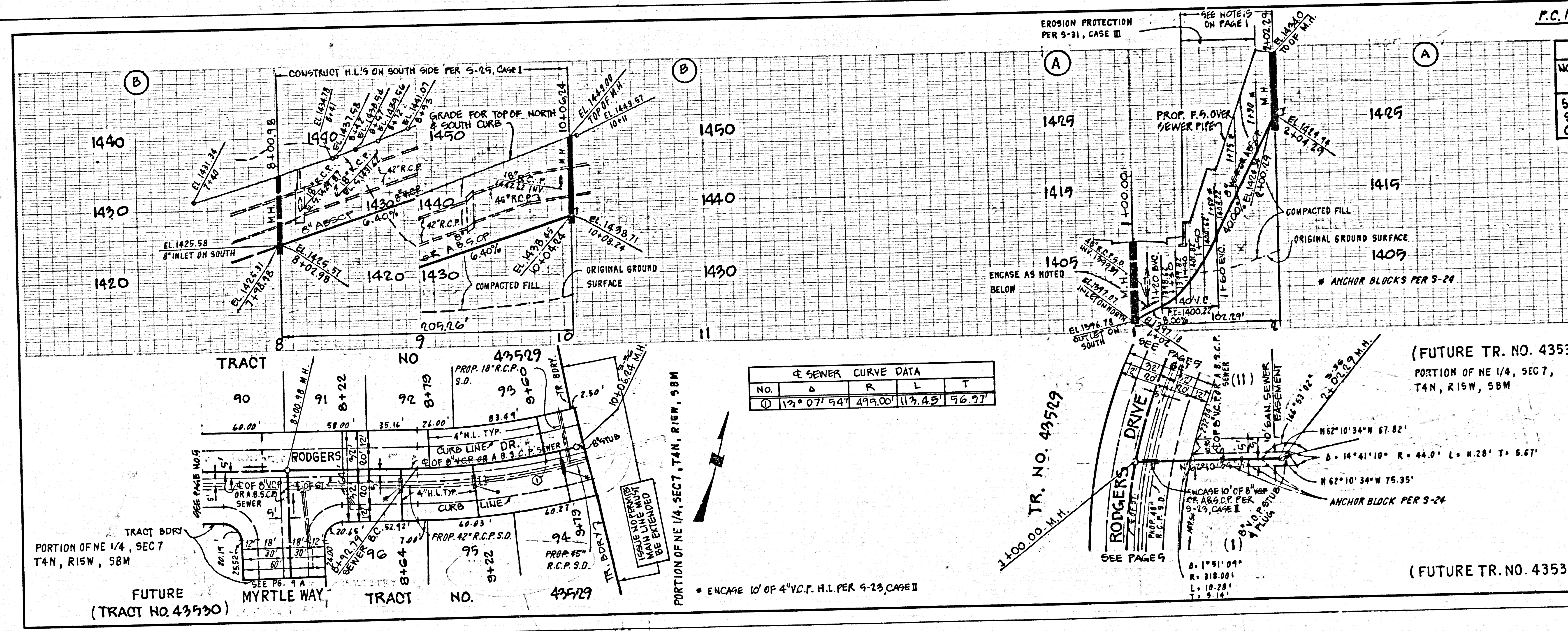
SEWER CURVE DATA

No.	A	R	L	T
①	7°51'21"	195.00'	104.75'	52.20'
②	6°00'00"	205.00'	214.68'	119.36'
③	26°33'07"	105.00'	190.78'	67.70'



DOUBLE SCALE
NO L.A. COUNTY CHARGE FOR CONNECTION
SEE SAN. DISTRICTS FOR SPECIAL CONNECTION CHARGES.

51475



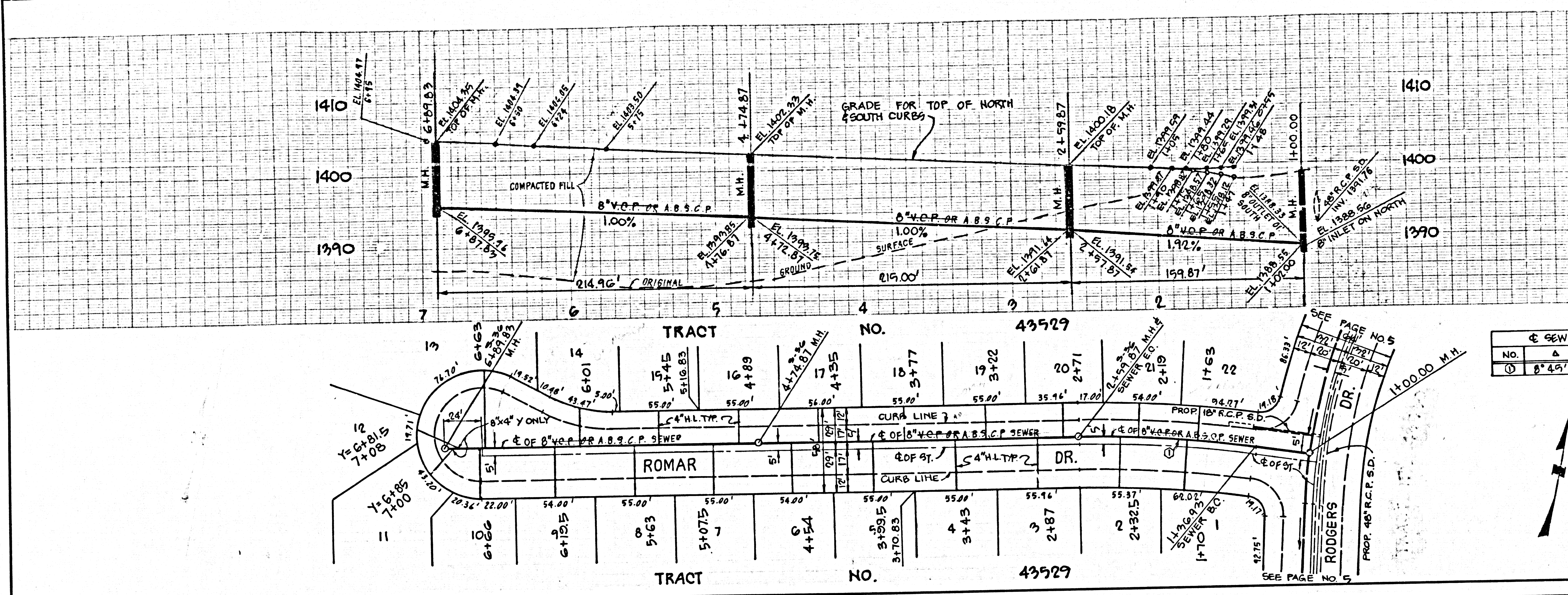
DOUBLE SCALE
NO L.A. COUNTY CHARGE FOR CONNECTION
SEE SAN. DISTRICTS FOR SPECIAL CONNECTION CHARGES.

51476

L.A. CO. 43258 BC 10358 (3)

DOUBLE SCALE
NO L.A. COUNTY CHARGE
FOR CONNECTION
SEE SAN. DISTRICTS FOR
SPECIAL CONNECTION
CHARGES.

51477

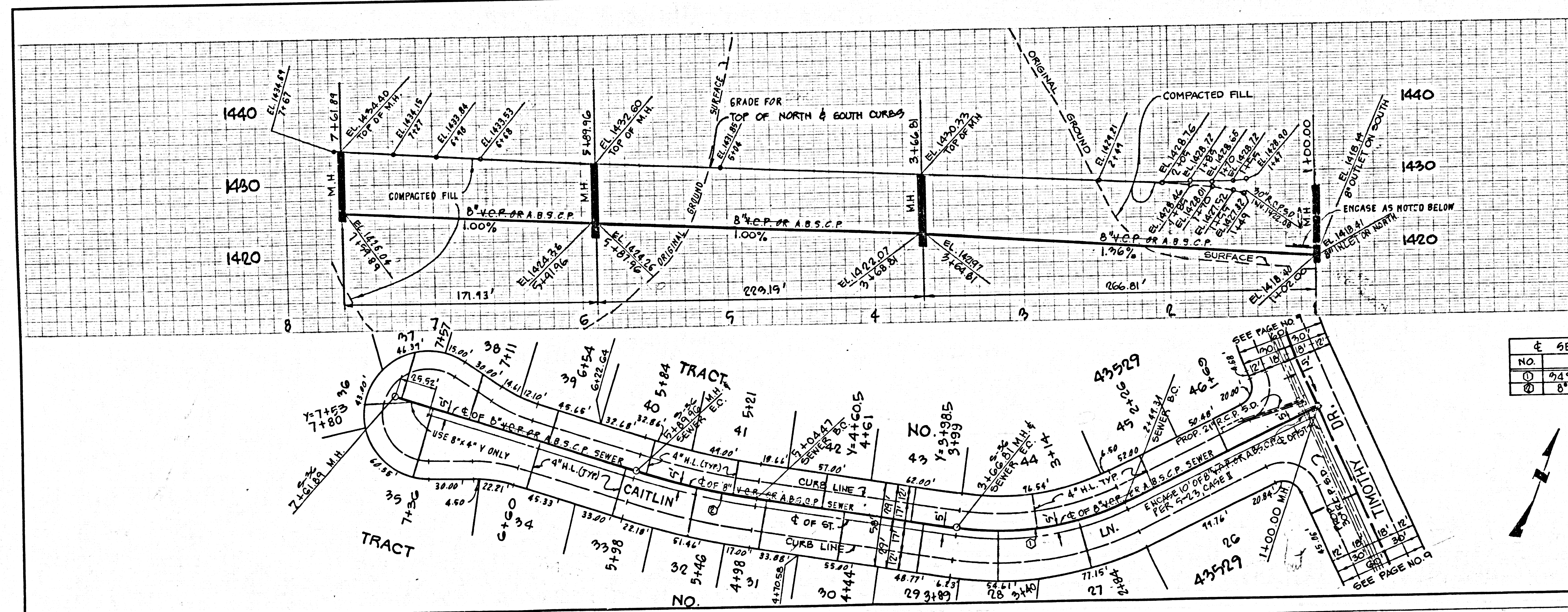


NO.	Δ	R	L	T
①	8° 45' 00"	829.00'	122.44'	61.59'



DOUBLE SCALE
NO L.A. COUNTY CHARGE
FOR CONNECTION
SEE SAN. DISTRICTS FOR
SPECIAL CONNECTION
CHARGES.

51478

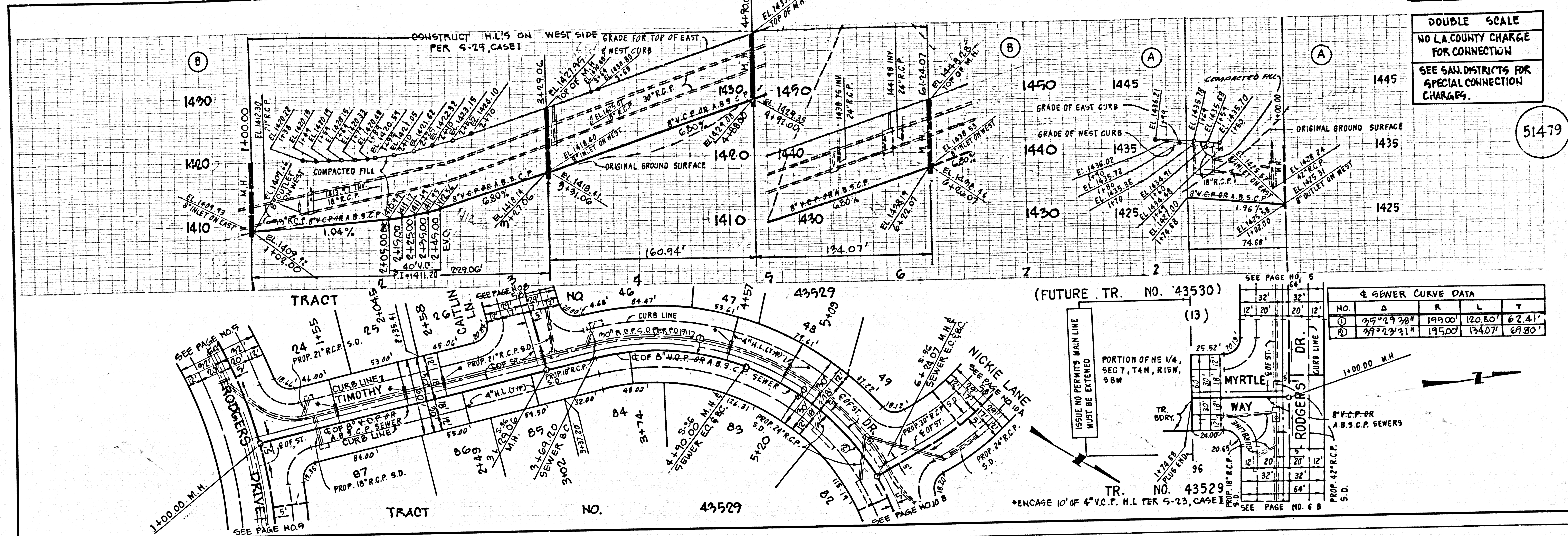


NO.	Δ	R	L	T
①	7° 4' 31.27"	199.00'	117.50'	60.99'
②	8° 40' 11"	566.00'	85.49'	42.82'



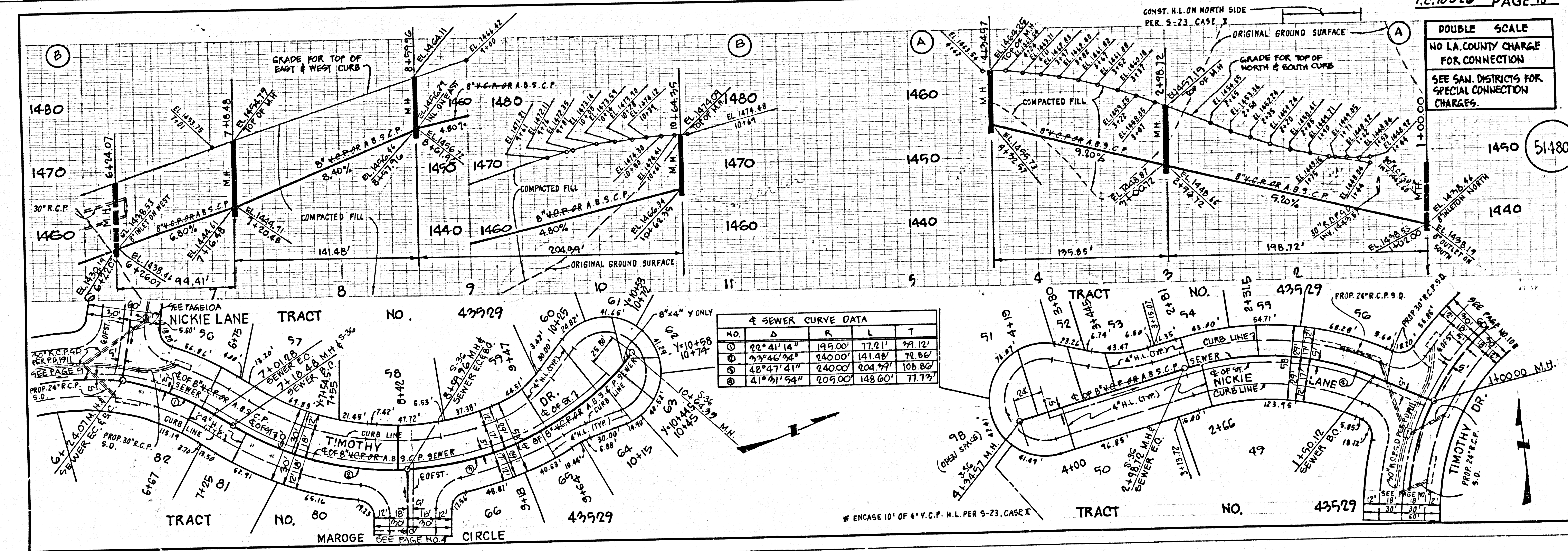
4 25C01 29 25284 .0M .PT

DOUBLE SCALE
NO L.A. COUNTY CHARGE
FOR CONNECTION
SEE SAN. DISTRICTS FOR
SPECIAL CONNECTION
CHARGES.



51479

DOUBLE SCALE
NO L.A. COUNTY CHARGE
FOR CONNECTION
SEE SAN. DISTRICTS FOR
SPECIAL CONNECTION
CHARGES.



51480

LR' NO' 43529 BC 10326 @