

SANITARY SEWERS

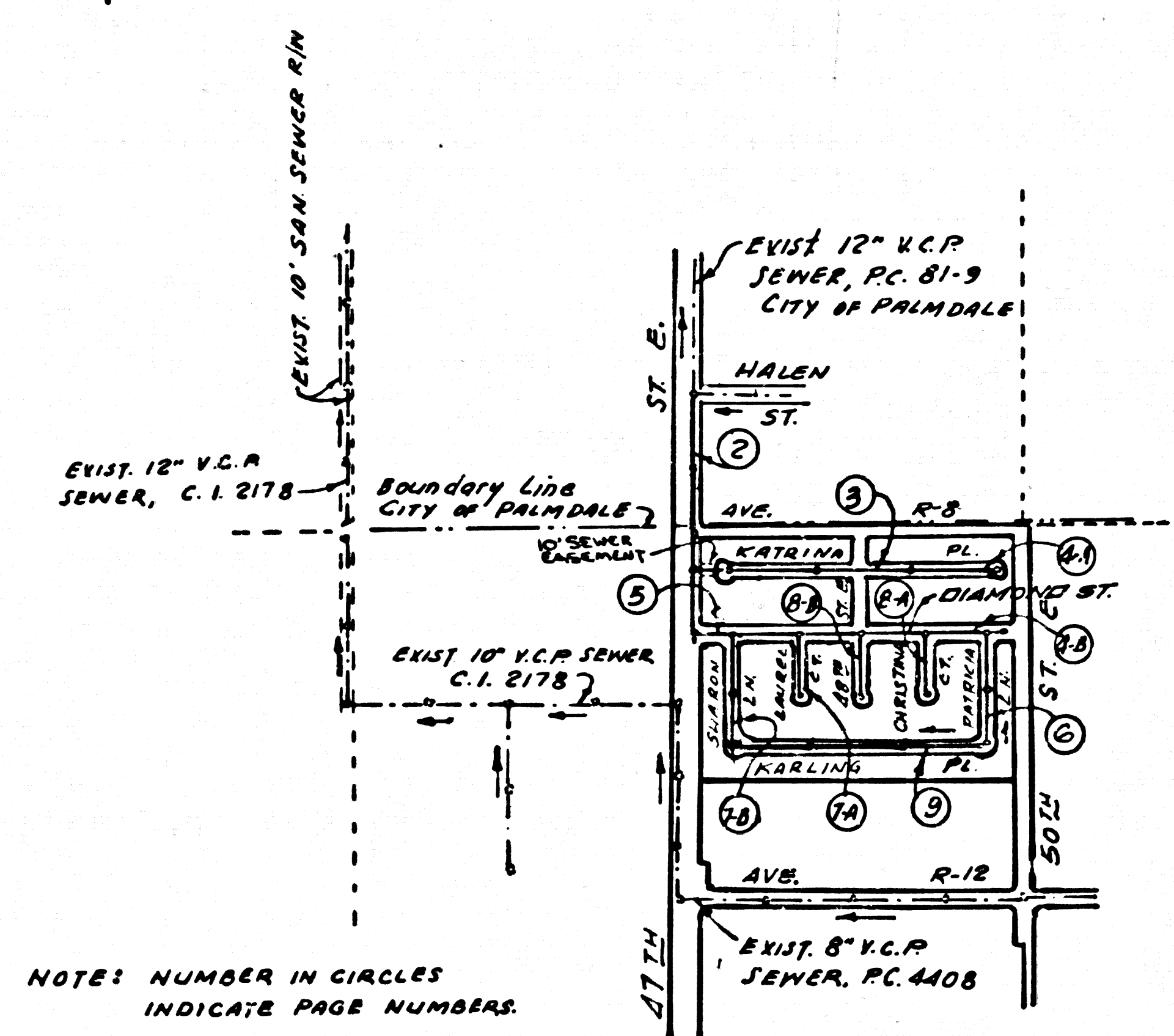
TO BE CONSTRUCTED IN

TRACT No 43865
PRIVATE CONTRACT NO. 10330

W.S. 65
5 SHEETS, 9 PAGES
SCALE: VERT. 1"=4'
HORIZ. 1"=40'
NOV. 1964
PREPARED IN THE OFFICES OF
ACD & ASSOCIATES
2734 JOHNSON DRIVE, VENTURA, CA. 93003
BY: *Paul J. ...*
REG. C. E. No. 12750

50999

B.M. RD & M. CL 357 ELEV. 2663.609
Rd. DEPT. TAG. 1' S. OF B.C.R.
40' E. & 47 TH ST. E. &
56' S. & AVE. R-12.
PALMDALE QUAD. 1900



INDEX MAP
P. C. 10330, TRACT No 43865
SCALE: 1"=600'

- CONSTRUCTION NOTES (Continued)
- 16. FULL COMPLIANCE WITH PART II OF THE SPECIAL PROVISIONS IS REQUIRED FOR THE INSTALLATION OF A.B.S. COMPOSITE PIPE.
 - 17. MAINHOLE WATER STOP GASKETS AND CLAMPS ARE REQUIRED FOR THE CONNECTIONS OF A.B.S. COMPOSITE PIPE TO MAINHOLE STRUCTURES.
 - 18. A.B.S. SOLID LAYER PIPE MUST BE USED FOR WYE AND HOUSE LATERAL CONNECTIONS TO A.B.S. COMPOSITE MAINLINE SEWER PIPE.
 - 19. A.B.S. COMPOSITE PIPE SHALL BE BEDDED IN CONFORMANCE WITH THE TABLE IN SECTION B-3.1 OF PART II OF THE SPECIAL PROVISIONS.
 - 20. 3-DIGREE DEFLECTION COUPLER SHALL BE USED TO ACCOMPLISH RADIUS OF CURVATURE LESS THAN 300' WITH A.B.S. COMPOSITE PIPE.
 - (A-R) WYE BRANCHES ONLY MAY BE USED FOR CONNECTIONS TO MAINLINE SEWER IF A.B.S.C.P. IS USED.
 - (I-I-A) ALL JOINTS BETWEEN CAST IRON PIPE AND A.B.S.C.P. SHALL BE MADE WITH APPROVED FITTINGS.

SPECIAL NOTE:
THIS SUBJECT SANITARY SEWER WILL NOT BE ACCEPTED FOR MAINTENANCE UNTIL SUCH TIME AS THE OUTLET SEWER "PC. 81-9" HAS BEEN CONSTRUCTED AND ACCEPTED BY THE CITY OF PALMDALE FOR PUBLIC USE.

NO CONNECTION FOR THE DISPOSAL OF INDUSTRIAL WASTES SHALL BE MADE TO SEWERS SHOWN ON THESE DRAWINGS UNTIL A PERMIT FOR INDUSTRIAL WASTEWATER DISCHARGE HAS BEEN ISSUED BY THE SANITATION DISTRICTS FOR SAID COMPT'Y.

BEFORE BREAKING INTO OR CONSTRUCTION ON A COUNTY SANITATION DISTRICT SEWER AND PRIOR TO FINAL ACCEPTANCE OF THE PROJECT, SANITATION DISTRICT INSPECTOR SHALL BE NOTIFIED BY PHONE (805) 942-5027 SO THAT REQUIRED INSPECTION CAN BE MADE.

REVISION NO. 1 DATE 3-27-65
A. Relocation and adjustments in elevations of 12" sewer main in 47th Street East from Sta. 1+02.10 to Sta. 1+15.2 (Page 2)
B. Relocation and adjustments in elevations to Manhole at Sta. 1+12 (Page 3)
C. Relocation and adjustments in elevations to Manhole at Sta. 1+12 (Page 3)

APPROVED *Janice E. ...* DATE 3-29-65
OFFICE OF COUNTY ENGINEER I.R.E. No. 17411

- GENERAL NOTES:
- 1. ELEVATIONS ARE IN FEET ABOVE U.S.C. & G.S. SEA LEVEL DATUM OF 1929.
 - 2. NO REVISIONS SHALL BE MADE IN THESE PLANS WITHOUT THE APPROVAL OF THE COUNTY ENGINEER.
 - 3. NO REPRESENTATIVE OF THE COUNTY ENGINEER WILL SURVEY OR LAY OUT ANY PORTION OF THE WORK.
 - 4. GRADES TO WHICH THIS IMPROVEMENT IS TO BE CONSTRUCTED ARE SHOWN ON PLANS AND PROFILES. GRADE POINTS FOR TOP OF CURB, CENTER LINE OF STREETS, OR CENTER LINE OF ALLEYS ARE SHOWN BY CIRCLES ON PROFILES AT ALL POINTS BETWEEN DESIGNATED POINTS. THE GRADE SHALL BE ESTABLISHED SO AS TO CONFORM TO A STRAIGHT LINE DRAWN BETWEEN SAID DESIGNATED POINTS.
 - 5. THE PRIVATE ENGINEER SHALL FURNISH THE COUNTY ENGINEER WITH GRADE SHEETS AND STATIONING FOR ALL HOUSE LATERALS AND "Y" OR "T" BRANCHES AND SHALL PROVIDE STAKES FOR THEM AT THEIR PROPER LOCATIONS WITH STATIONING PLAINLY MARKED. ALL HOUSE LATERALS SHALL BE CONSTRUCTED IN A STRAIGHT ALIGNMENT AT RIGHT ANGLES FROM THE MAIN LINE SEWER EXCEPT AS SHOWN ON THE PLANS. HOUSE LATERALS FROM CHIMNEYS SHALL NOT HAVE AN ANGLE OF LESS THAN 45° WITH THE MAIN LINE SEWER. ANY CHANGE IN ALIGNMENT SHALL BE REQUESTED IN WRITING BY THE PRIVATE ENGINEER.
 - 6. THE PRIVATE ENGINEER SHALL FURNISH THE HOUSE LATERAL DEPTH AT THE PROPERTY LINE BELOW THE TOP OF CURB ELEVATION FOR EACH HOUSE LATERAL ON THE GRADE SHEET.
 - 7. BEFORE WORK CAN BE STARTED, THE CONTRACTOR MUST OBTAIN A PERMIT TO EXCAVATE IN COUNTY STREETS FROM THE L.A. COUNTY ROAD DEPT., DISTRICT OFFICE NO. 9, AND PAY A FEE TO THE COUNTY ENGINEER, 500 SOUTH WENDOVER, PALM BEACH, LOS ANGELES, CA 90005, TO COVER THE COST OF CONSTRUCTION INSPECTION AND RECORD PLANS.
 - 8. IF WORK IS TO BE DONE IN A STATE HIGHWAY, A PERMIT MUST BE OBTAINED FROM THE STATE OF CALIFORNIA, DIVISION OF HIGHWAYS, 120 SOUTH SPRING STREET, LOS ANGELES, CALIFORNIA.
 - 9. APPROVAL OF THIS PLAN BY THE COUNTY OF LOS ANGELES DOES NOT CONSTITUTE A REPRESENTATION AS TO THE ACCURACY OF THE LOCATION OF OR THE EXISTENCE OR NON-EXISTENCE OF ANY UNDERGROUND UTILITY PIPE, OR STRUCTURE WITHIN THE LIMITS OF THIS PROJECT. THIS NOTE APPLIES TO ALL PAGES.
 - 10. REFER TO SECTION 7.18.4.1 OF THE STANDARD SPECIFICATIONS, REGARDING SAFETY ORDERS.
 - 11. PRIOR TO THE ISSUANCE OF THE REQUIRED SEWER CONSTRUCTION PERMIT, THE CONTRACTOR SHALL OBTAIN AND FILE WITH THE COUNTY ENGINEER COPIES OF A PERMIT TO EXCAVATE IN COUNTY STREETS FROM THE LOS ANGELES COUNTY ROAD DEPARTMENT, A PERMIT FOR EXCAVATIONS AND TRENCHES FROM THE STATE OF CALIFORNIA, DIVISION OF INDUSTRIAL SAFETY AND A CERTIFICATE OF WORKERS COMPENSATION INSURANCE WITH THE DEPARTMENT OF COUNTY ENGINEER, 500 SOUTH WENDOVER, PALM BEACH, LOS ANGELES, CALIFORNIA 90005, NAMED AS THE CONTRACTOR HOLDER TO BE NOTIFIED 30 DAYS PRIOR TO CANCELLATION OF POLICY.

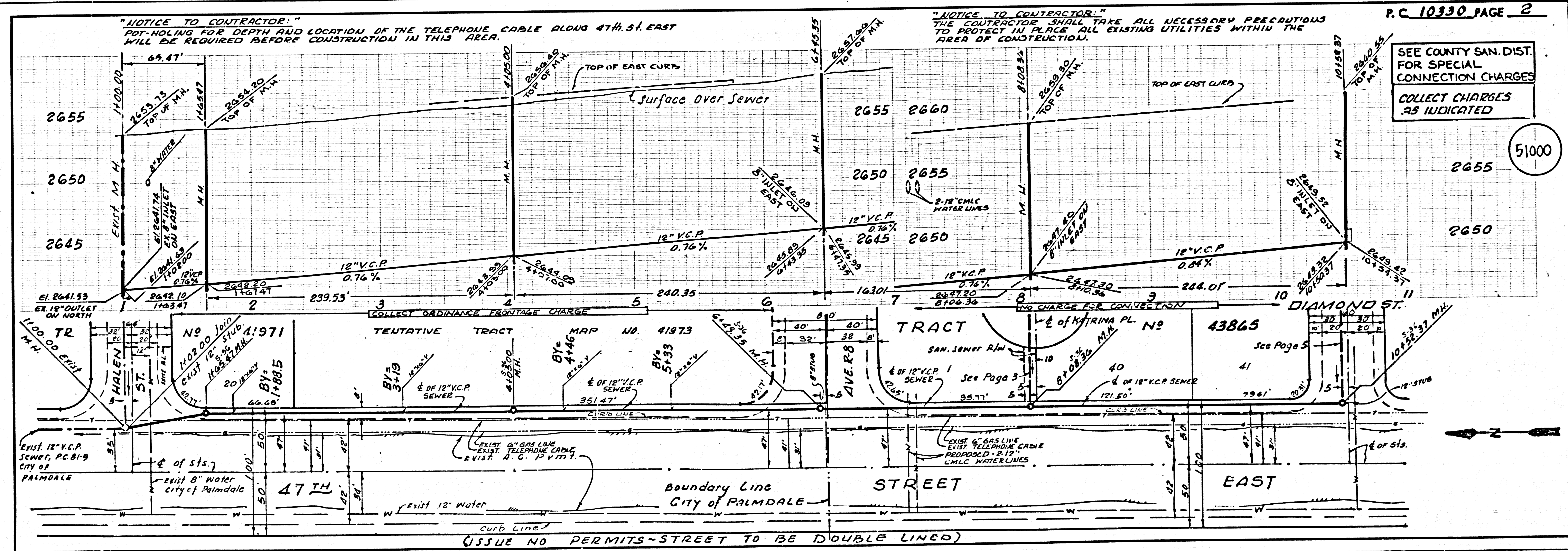
- CONSTRUCTION NOTES:
- 1. WORK SHALL BE CONSTRUCTED ACCORDING TO THE STANDARD SPECIFICATIONS FOR PUBLIC WORKS CONSTRUCTION (1962 EDITION WITH SUPPLEMENTS) AND COUNTY ENGINEER SPECIAL PROVISIONS FOR THE CONSTRUCTION OF SANITARY SEWERS DATED FEB. 21, 1958, AND SHALL BE PROSECUTED ONLY IN THE PRESENCE OF THE COUNTY ENGINEER.
 - 2. THE CONTRACTOR SHALL NOTIFY THE PROJECT MAINTENANCE DIVISION BY TELEPHONE 730-2166, AT LEAST TWENTY-FOUR HOURS BEFORE STARTING ANY WORK UNDER THIS CONTRACT.
 - 3. HOUSE LATERALS TO BE CONSTRUCTED WITH INVERTS AT PROPERTY LINE 8 FEET BELOW CURB GRADE EXCEPT AS NOTED.
 - 4. WYE OR TEE BRANCHES MAY BE USED FOR CONNECTIONS TO MAINLINE SEWERS EXCEPT AS NOTED.
 - 5. ALL STRUCTURES SHALL BE EITHER BRICK MANHOLES PER S-23 OR PRECAST CONCRETE MANHOLES PER S-26, EXCEPT AS NOTED.
 - 6. PROPOSED STAKES ON THE PROPERTY LINE OR PROPERTY LINES PROVIDED AT RIGHT ANGLES TO THE SEWER LINE AT THE CENTER LINE OF EACH MANHOLE.
 - 7. MANHOLE TOPS IN UNIMPROVED RIGHTS OF WAY TO BE SIX INCHES ABOVE FINISHED GRADE.
 - 8. WITHEPFD CLAY PIPE JOINTS SHALL BE TYPE "D" OR "E" PER STANDARD SPECIFICATIONS SECTION 208-2.
 - 9. IF A POWER POLE IS WITHIN THREE FEET OF THE SEWER, THE SEWER SHALL BE ENCASED PER S-22, CASE II, TWO FEET ON EACH SIDE FROM THE POINT OF INTERFERENCE.
 - 10. IF DURING THE COURSE OF CONSTRUCTION IT IS DETERMINED THAT THERE IS LESS THAN FOUR FEET OF COVER OVER THE TOP OF A MAIN LINE OR HOUSE LATERAL SEWER WHICH IS NOT INDICATED ON THE PLANS, THE PIPE SHALL BE ENCASED PER S-22, CASE II, UNLESS OTHERWISE APPROVED BY THE COUNTY ENGINEER.
 - 11. ALL JOINTS BETWEEN CAST IRON PIPE AND WITHEPFD CLAY PIPE SHALL BE MADE WITH A RUBBER SLEEVE JOINT, TYPE "C" OR "D" (WITH RUBBERING IF NECESSARY) PER STANDARD SPECIFICATIONS, SECTION 208-2.
 - 12. SEWERS TO BE TESTED FOR LEAKAGE PER SECTION 208-1.4 OF THE STANDARD SPECIFICATIONS AND SPECIAL PROVISIONS.
 - 13. RESURFACE ALL TRENCHES WITHIN PAVED AREAS TO MEET L.A. COUNTY ROAD DEPT. OR CALIFORNIA STATE HIGHWAY REQUIREMENTS IN ACCORDANCE WITH PERMITS.
 - 14. FULL COMPLIANCE WITH SECTION 208-1.3.3 OF THE SPECIAL PROVISIONS WILL BE REQUIRED FOR BACKFILL IN STREETS. CERTIFICATION OF BACKFILL COMPACTION AND SAND EQUIVALENTS BY A QUALIFIED, REGISTERED TESTING LABORATORY SHALL BE PROVIDED BY THE PERMITTEE PRIOR TO THE ISSUANCE OF A CERTIFICATE OF PARTIAL ACCEPTANCE.
 - 15. SPECIAL BACKFILL IN BASEMENT CONSTRUCTION: (A) BACKFILL TRENCH AND REPLACE OTHER EARTH SO AS TO ACHIEVE THE NATURAL OR FINISHED GRADES AND SLOPES SHOWN ON THE GRADING PLAN APPROVED FOR THE DEVELOPMENT BY THE BUILDING AND SAFETY DIVISION; (B) ALL BACKFILL AND EARTH REPLACED SHALL BE COMPACTED TO A MINIMUM OF 90% OF MAXIMUM DENSITY PER ASTM STD. METHOD OF TEST D998 BY A WOODWARD ACCEPTABLE CERTIFICATION OF 2" CH COMPACTION SHALL BE SUBMITTED TO THE PROJECT MAINTENANCE DIVISION.

THE FOLLOWING LATEST REVISED STANDARD PLANS ON FILE IN THE OFFICE OF THE COUNTY ENGINEER SHALL APPLY IN THE CONSTRUCTION OF THIS PROJECT.

USING	5.2
MINIMUM PUBLIC SAFETY REQUIREMENTS	5.2
BRICK MANHOLE	5.2
STANDARD MANHOLE TOP	5.2
BRICKING FOR STUBS PIPE	5.2
CHIMNEY AND DISCHARGE	5.2
WYE OR TEE BRANCH	5.2
ALLOWABLE TRENCH WIDTHS	5.2
ACCESS MANHOLE FRAMES AND COVERS	5.2
NON-REINFORCED PRECAST CONCRETE MANHOLE	5.2

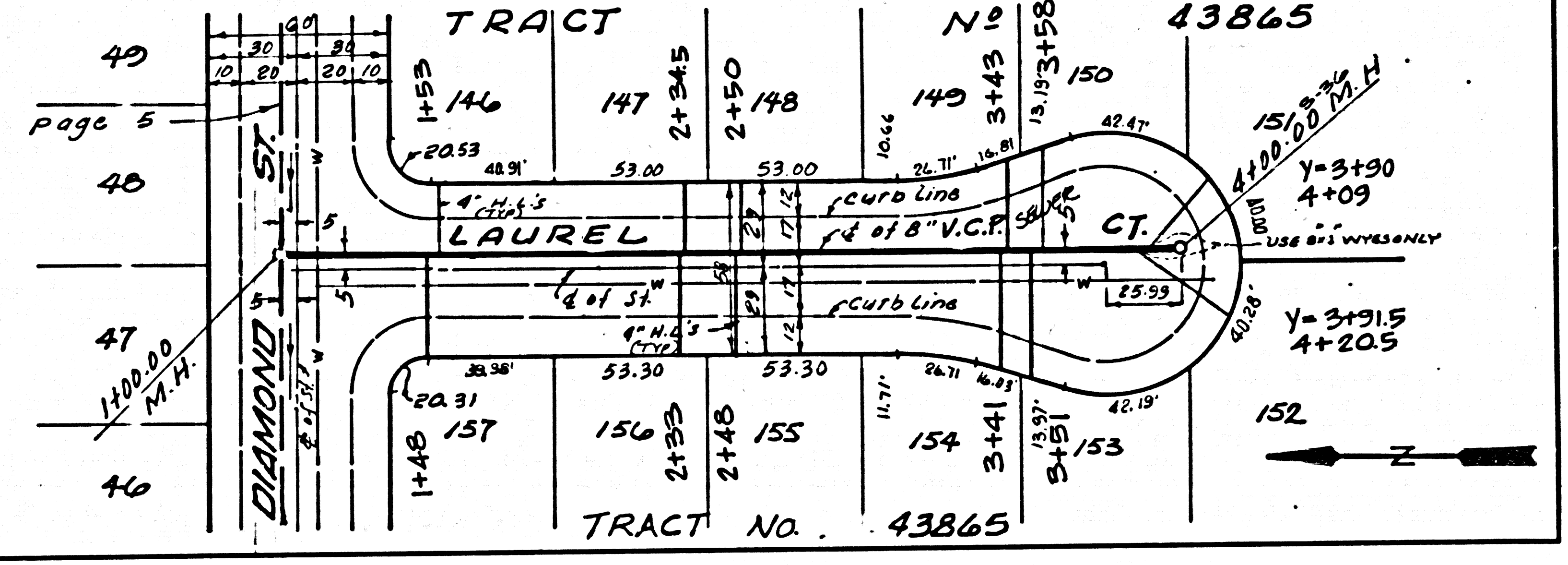
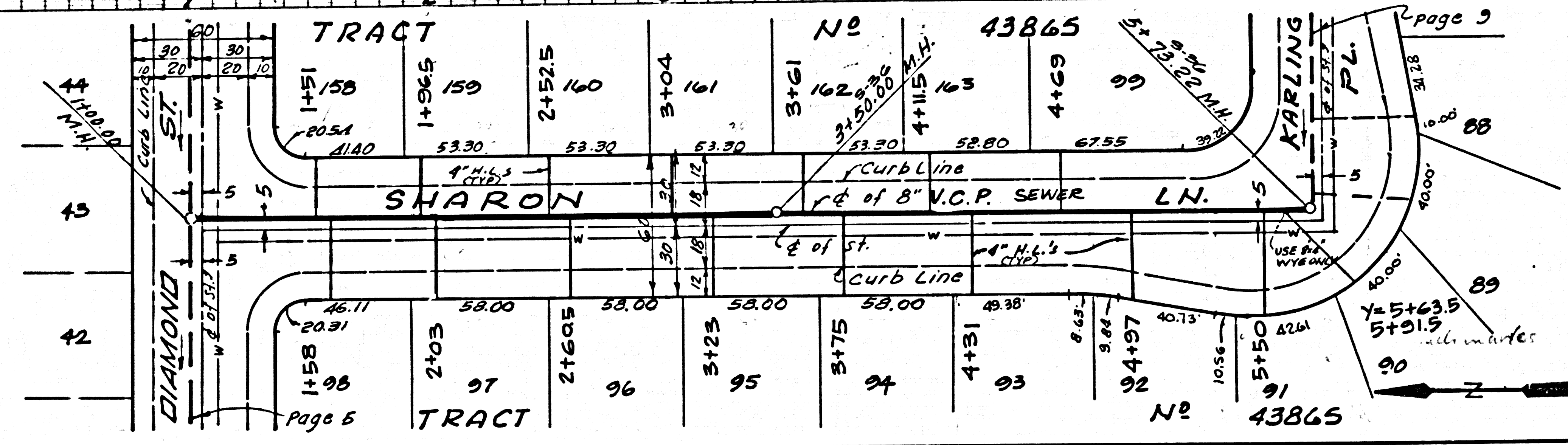
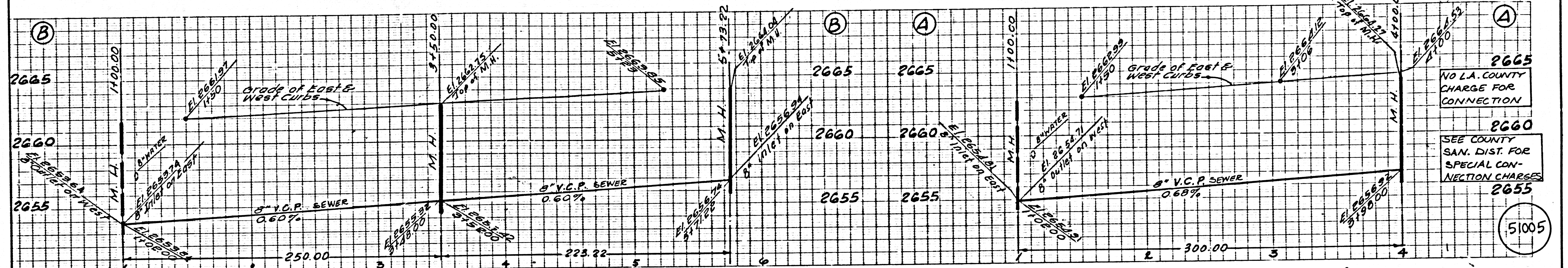
COUNTY OF LOS ANGELES, CALIFORNIA
STEPHEN J. KOONCE, COUNTY ENGINEER
APPROVED *...* DATE
CHECKED *...* DATE
ANTELOPE VALLEY BLDG. DIST. 8

CHARLES M. CARRY, CHIEF ENGINEER
APPROVED *...* DATE
APPROVED *...* DATE
LOS ANGELES COUNTY ENGINEER, FACILITIES CONSIDERED SEWER DEPARTMENT DIST. 8
REMOVED BY B.S. ... DATE 1-3-68

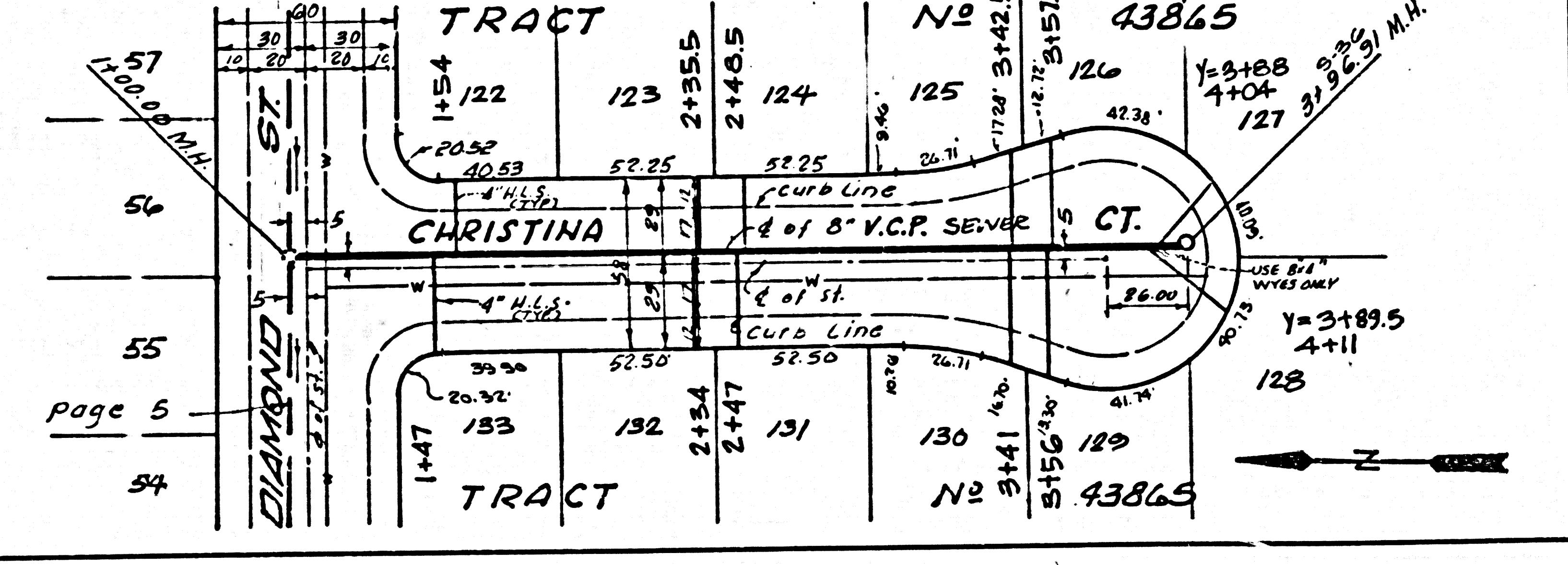
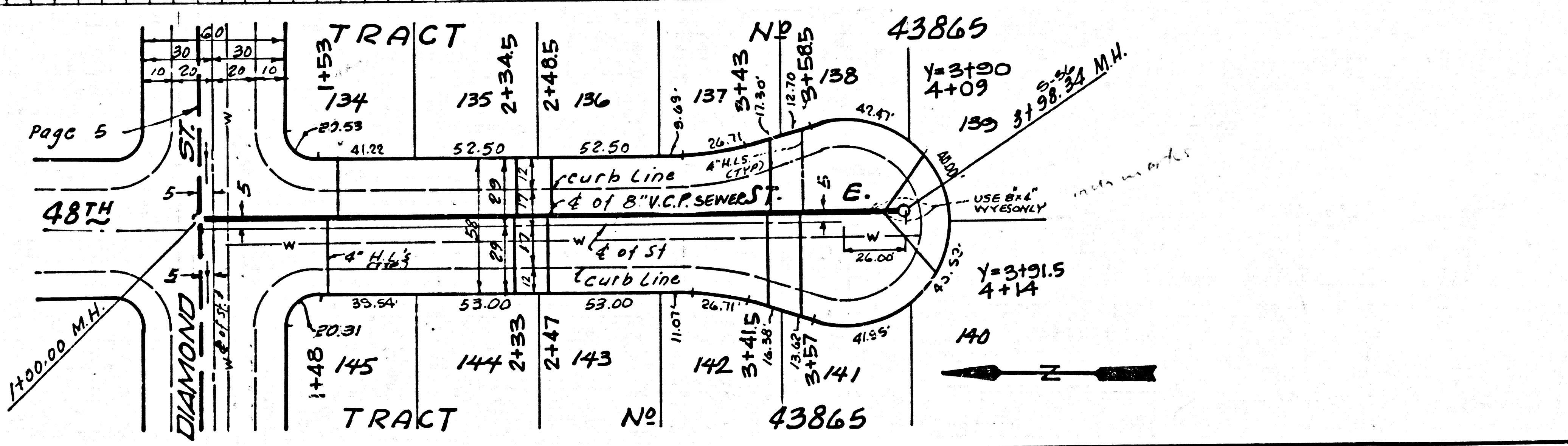
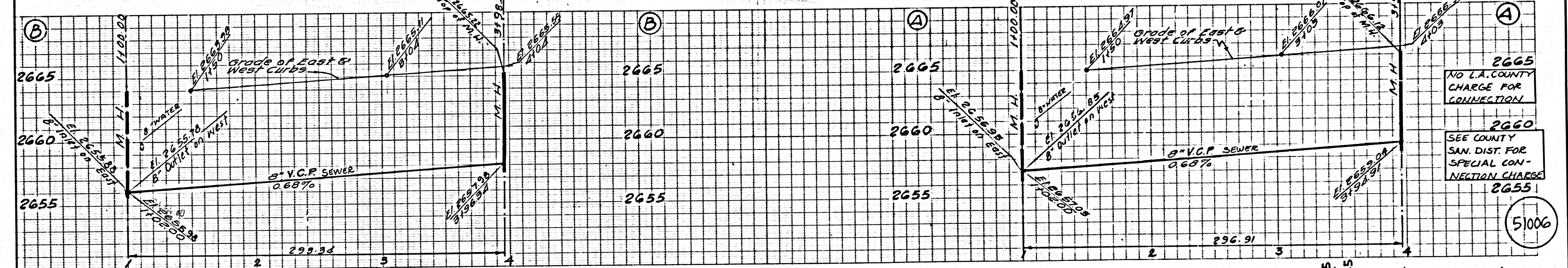


SEE COUNTY SAN. DIST. FOR SPECIAL CONNECTION CHARGES
COLLECT CHARGES AS INDICATED

51000



0501 .09



2857 .01 TRACT

