

# SANITARY SEWERS

TO BE CONSTRUCTED IN

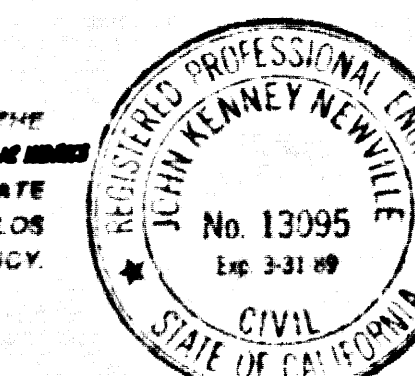
## TRACT NO 43103 PRIVATE CONTRACT NO. 10355 INDEX A-93

3 SHEETS, 5 PAGES

SCALE: VERT. 1" = 4' HORIZ. 1" = 40'

OCTOBER, 1964

ENGINEERING SERVICE CORPORATION  
2011 WASHINGTON STREET, LOS ANGELES, CALIF. 90012  
REG. C.E. No. 13095



### GENERAL NOTES:

1. ELEVATIONS ARE IN FEET ABOVE U.S.C. & G.S. SEA LEVEL DATUM OF 1929.
2. NO REVISIONS SHALL BE MADE IN THESE PLANS WITHOUT THE APPROVAL OF THE DIRECTOR OF PUBLIC WORKS.
3. NO REPRESENTATIVE OF THE OWNER SHALL SURVEY OR LAY OUT ANY PORTION OF THE WORK.
4. GRADES TO WHICH THIS IMPROVEMENT IS TO BE CONSTRUCTED ARE SHOWN ON PLANS AND PROFILES. GRADE POINTS FOR TOP OF CURBS, CENTER LINE OF STREETS OR CENTER LINE OF ALLEYS ARE SHOWN BY DOTTED OR DASHED LINES. GRADE POINTS BETWEEN SAID DOTTED OR DASHED POINTS SHALL BE ESTABLISHED SO AS TO CONFORM TO A 5% MAXIMUM GRADE IN EITHER DIRECTION.
5. THE PRIVATE ENGINEER SHALL FURNISH THE WORK OF PUBLIC WORKS WITH GRADE SHEETS AND STATIONINGS FOR ALL HOUSE LATERALS AND 12" OR 15" BRANCHES AND SHALL INDICATE STATIONS FOR THE MAIN LINE AND BRANCHES WITH STATIONINGS PLAINLY MARKED AND 12" OR 15" BRANCHES SHALL BE CONSTRUCTED IN A STRAIGHT ALIGNMENT AT RIGHT ANGLES FROM THE MAIN LINE SEWER EXCEPT AS SHOWN ON THE PLANS. HOUSE LATERALS FROM CHIMNEYS SHALL NOT HAVE AN ANGLE OF LEASE THAN 45° WITH THE MAIN LINE SEWER. ANY CHANGE IN ALIGNMENT SHALL BE REQUESTED IN WRITING BY THE PRIVATE ENGINEER.
6. THE PRIVATE ENGINEER SHALL FURNISH THE HOUSE LATERAL DEPTHS AT THE PROPERTY LINE BELOW THE TOP OF CURB ELEVATION FOR EACH HOUSE LATERAL ON THE GRADE SHEET.
7. BEFORE WORK CAN BE STARTED THE CONTRACTOR MUST OBTAIN A PERMIT TO EXCAVATE IN COUNTY STREETS FROM THE L.A. COUNTY ENGINEER, DEPT. OF PUBLIC WORKS, 120 SOUTH SPRING STREET, LOS ANGELES, CALIFORNIA. THIS PERMIT MUST BE OBTAINED FROM THE STATE OF CALIFORNIA DIVISION OF HIGHWAYS, 120 SOUTH SPRING STREET, LOS ANGELES, CALIFORNIA.
8. IF WORK IS TO BE DONE IN A STATE HIGHWAY, A PERMIT MUST BE OBTAINED FROM THE STATE OF CALIFORNIA DIVISION OF HIGHWAYS, 120 SOUTH SPRING STREET, LOS ANGELES, CALIFORNIA.
9. APPROVAL OF THIS PLAN BY THE COUNTY OF LOS ANGELES DOES NOT CONSTITUTE A REPRESENTATION AS TO THE ACCURACY OF THE INFORMATION UPON WHICH THE ENGINEER HAS BASED HIS DESIGN OR THE STRUCTURE WITHIN THE LIMITS OF THIS PROJECT. THIS NOTE APPLIES TO ALL PAGES.
10. REFER TO SECTION 116.41 OF THE STANDARD SPECIFICATIONS REGARDING SAFETY ORDERS.
11. PERMIT TO EXCAVATE IN THE REQUIRED SEWER CONSTRUCTION PERMIT THAT THE CONTRACTOR SHALL OBTAIN AND FILE WITH THE DEPT. OF PUBLIC WORKS, 120 SOUTH SPRING STREET, LOS ANGELES, CALIFORNIA. THIS PERMIT MUST BE OBTAINED FROM THE STATE OF CALIFORNIA DIVISION OF INDUSTRIAL SAFETY AND A CERTIFICATE OF WORKERS COMPENSATION INSURANCE WITH THE DEPARTMENT OF PUBLIC WORKS, 120 SOUTH SPRING STREET, LOS ANGELES, CALIFORNIA MUST BE OBTAINED PRIOR TO CANCELLATION OF POLICY.

### CONSTRUCTION NOTES:

1. WORK SHALL BE CONSTRUCTED ACCORDING TO THE STANDARD SPECIFICATIONS FOR PUBLIC WORKS CONSTRUCTION (1964 EDITION) WITH 1964 SUPPLEMENTS, EXCEPT WHERE SPECIAL PROVISIONS FOR THE CONSTRUCTION OF SANITARY SEWERS ARE INDICATED HEREON.
2. THE CONTRACTOR SHALL NOTIFY THE CONSTRUCTION DIVISION BY TELEPHONE (800-888) AT LEAST TWENTY-FOUR HOURS BEFORE STARTING ANY WORK UNDER THIS CONTRACT.
3. HOUSE LATERALS TO BE CONSTRUCTED WITH INVERTS AT PROPERTY LINE 8 FEET BELOW CURB GRADE EXCEPT AS NOTED.
4. WYE OR TEE BRANCHES MAY BE USED FOR CONNECTIONS TO MAIN LINE SEWERS EXCEPT AS NOTED.
5. ALL STRUCTURES SHALL BE EITHER BRICK MANHOLES PER S-3 OR PRECAST CONCRETE MANHOLES PER S-38 EXCEPT AS NOTED.
6. PROVIDE STAIRS ON THE PROPERTY LINE OR PROPERTY LINES PRODUCED AT RIGHT ANGLES TO THE SEWER LINE AT THE CENTER LINE OF EACH MANHOLE.
7. MANHOLE TOPS IN UNIMPROVED RIGHTS OF WAY TO BE SIX INCHES ABOVE FINISHED GRADE.
8. VITRIFIED CLAY PIPE JOINTS SHALL BE TYPE "D" OR "D" PER STANDARD SPECIFICATIONS SECTION 308-2.
9. IF A POWER HOLE IS WITHIN THREE FEET OF THE SEWER THE SEWER SHALL BE ENCASED PER S-38 CASE 8, TWO FEET ON EACH SIDE FROM THE POINT OF INTERFERENCE.
10. IF DURING THE COURSE OF CONSTRUCTION IT IS DETERMINED THAT THERE IS LESS THAN FOUR FEET OF COVER OVER THE TOP OF A MAIN LINE OR HOUSE LATERAL SEWER WHICH IS NOT INDICATED ON THE PLANS, THE PIPE SHALL BE ENCASED PER S-38 CASE 8 UNLESS OTHERWISE APPROVED BY THE DIRECTOR OF PUBLIC WORKS.
11. ALL JOINTS BETWEEN CAST IRON PIPE AND VITRIFIED CLAY PIPE SHALL BE MADE WITH A RUBBER SLEEVE JOINT, TYPE "C" OR "D" WITH BUSHING IF NECESSARY PER STANDARD SPECIFICATIONS, SECTION 308-2.
12. SEWERS TO BE TESTED FOR LEAKAGE PER SECTION 308-1.4 OF THE STANDARD SPECIFICATIONS AND SPECIAL PROVISIONS.
13. RESURFACE ALL TRENCHES WITHIN PAVED AREAS TO MEET L.A. COUNTY ROAD DEPT. OR CALIFORNIA STATE HIGHWAY REQUIREMENTS IN ACCORDANCE WITH PERMITS.
14. FULL COMPLIANCE WITH SECTION 308-1.5 OF THE STANDARD SPECIFICATIONS WILL BE REQUIRED FOR BACKFILL IN STREETS. CENTRALIZATION OF BACKFILL COMPACTION AND SAND EQUIVALENTS BY A QUALIFIED, REGISTERED TESTING LABORATORY SHALL BE PROVIDED BY THE PERMITTEE PRIOR TO THE ISSUANCE OF A CERTIFICATE OF PARTIAL ACCEPTANCE.
15. SPECIAL BACKFILL IN EXISTING CONSTRUCTION: (A) BACKFILL TRENCH AND REPLACE OTHER EARTH SO AS TO ACHIEVE THE NATURAL OR FINISHED GRADES AND SLOPES SHOWN ON THE DRAINING PLAN APPROVED FOR THIS DEVELOPMENT BY THE ENGINEERING DIVISION; (B) ALL BACKFILL AND EARTH REPLACED SHALL BE COMPACTED TO A MINIMUM OF 80% OF MAXIMUM DRY UNIT WEIGHT PER A.S.T.M. METHOD OF TESTS BY AN APPROVED, ACCEPTABLE CERTIFICATION OF SUCH COMPACTION SHALL BE SUBMITTED TO THE CONSTRUCTION DIVISION, DEPT. OF PUBLIC WORKS.

## DOUBLE SCALE

### CONSTRUCTION NOTES: (CONT)

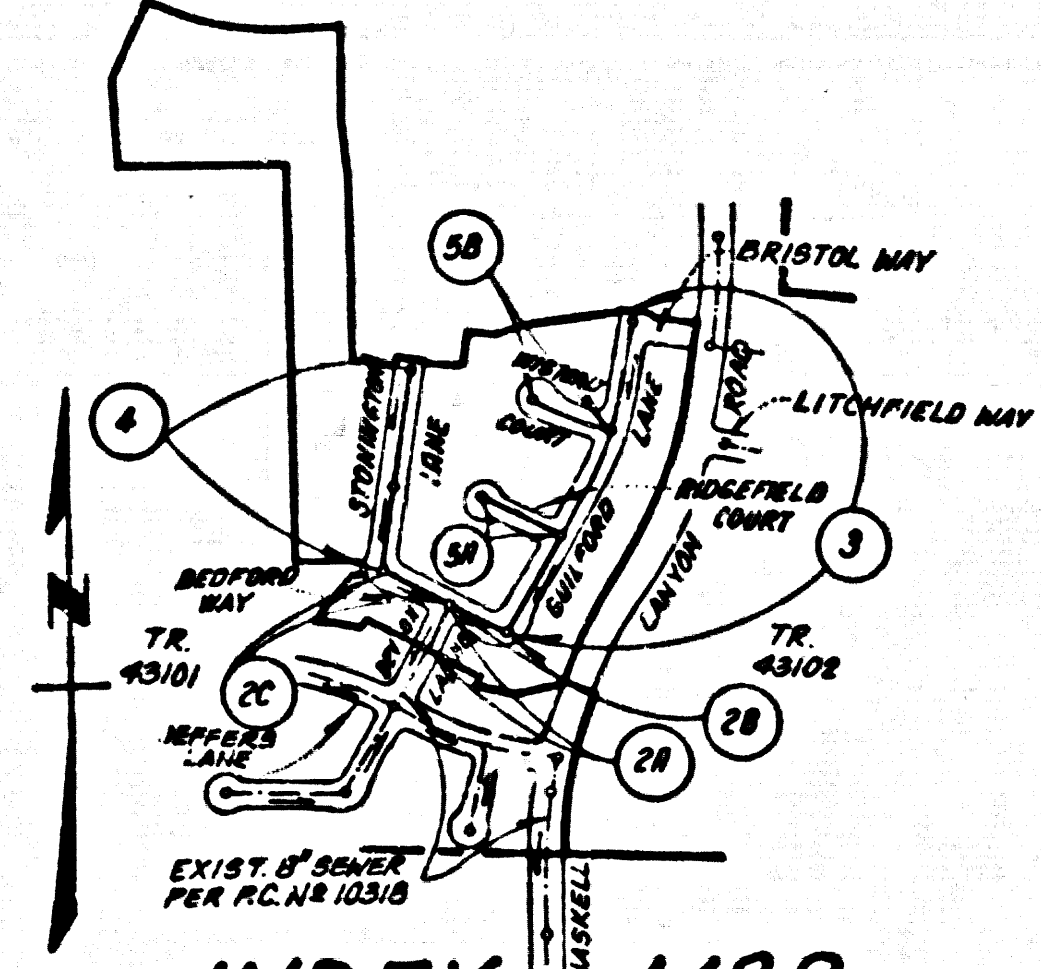
16. WYE BRANCHES ONLY MAY BE USED FOR CONNECTIONS TO MAIN LINE SEWER IF A.B.S.C.P. IS USED.
17. ALL JOINTS BETWEEN CAST IRON PIPE AND A.B.S.C.P. SHALL BE MADE WITH APPROVED FITTINGS.
18. FILL COMPLIANCE WITH PART IV OF THE SPECIAL PROVISIONS IS REQUIRED FOR THE INSTALLATION OF A.B.S. COMPOSITE PIPE AND A.B.S. SOLID WALL HOUSE LATERALS.
19. MANHOLE WATER STOP GASKETS AND CLAMPS ARE REQUIRED FOR THE CONNECTION OF A.B.S. COMPOSITE PIPE TO MANHOLES STRUCTURES.
20. A.B.S. SOLID WALL PIPE MUST BE USED FOR WYE AND HOUSE LATERAL CONNECTIONS TO A.B.S. COMPOSITE MANHOLE SEWER PIPE.
21. 3 DROP DEFLECTION COUPLERS SHALL BE USED TO ACCOMPLISH RADII OF CURVATURE LESS THAN 300'.
22. A.B.S. COMPOSITE PIPE SHALL BE BEDDED IN CONFORMANCE WITH THE TABLE IN SECTION 8-31 OF PART IV OF SPECIAL PROVISIONS.

NO CONNECTION FOR THE DISPOSAL OF INDUSTRIAL WASTES SHALL BE MADE TO SEWERS SHOWN ON THESE DRAWINGS UNTIL A PERMIT FOR INDUSTRIAL WASTEWATER DISCHARGE HAS BEEN ISSUED BY THE SANITATION DISTRICTS FOR SAID CONNECTION.

BEFORE BREAKING INTO OR CONSTRUCTION ON A COUNTY SANITATION DISTRICT SEWER AND PRIOR TO FINAL ACCEPTANCE OF THE PROJECT, SANITATION DISTRICT INSPECTOR SHALL BE NOTIFIED BY PHONE (818) 962-8605 SO THAT REQUIRED INSPECTION CAN BE MADE.

ISSUE NO HOUSE LATERAL CONNECTION PERMITS UNTIL OUTLET SEWER, PRIVATE CONTRACT NO. 10318 IS ACCEPTED FOR PUBLIC USE BY THE COUNTY OF LOS ANGELES.

P.M. CL 3825 ELEV 1296.147  
LACS ON MON IN NE COR CORN BASE CITY OF LA W 1/4  
TOWER #12 A/S 150 FT. IN BANQUET CANTON RD  
QUIN W WY CL SUSAN BETH WAY AKO (CA 204-7150)  
NEWHALL QUAD. 1978



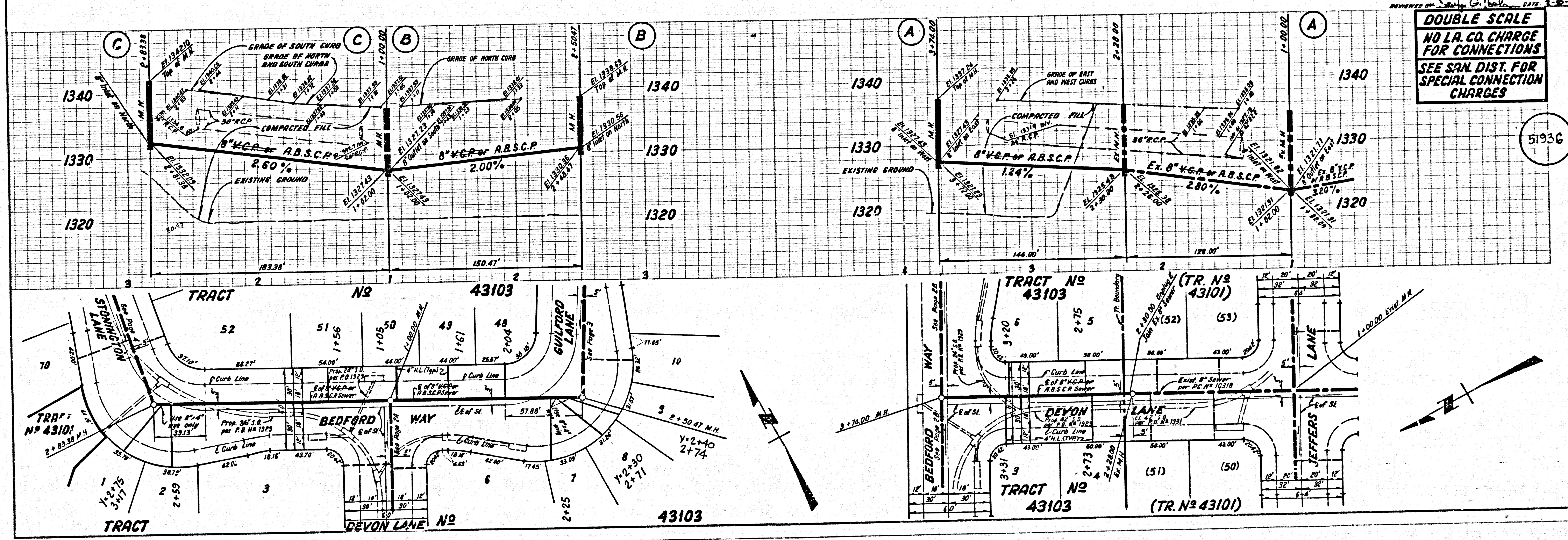
INDEX MAP  
P.C. NO 10355  
SCALE: 1" = 600'  
TRACT NO 43103

LEGEND	NO.
MINIMUM PUBLIC SAFETY REQUIREMENTS	S-1
BRICK MANHOLE	S-3
STANDARD MANHOLE STOP	S-17
BEDDING FOR SEWER PIPE	S-23
CRADLING AND ENCASING	S-24
WYE OR TEE SUPPORT	S-25
ALLOWABLE TRENCH WIDTHS	S-26
LOCKING MANHOLE FRAME AND COVER	S-28
NON-REINFORCED PRECAST CONCRETE MANHOLE	S-38

51935

COUNTY OF LOS ANGELES, CALIFORNIA  
THOMAS A. TIDEMANSON, DIRECTOR OF PUBLIC WORKS  
CHARLES M. CURRY, CHIEF ENGINEER  
APPROVED: *Charles M. Curry* 4/6/67  
CHECKED: *John J. Felt* 3/31/87  
REG. C.E. NO. 14041  
Santa Clarita Valley BLDG. DIST. 22

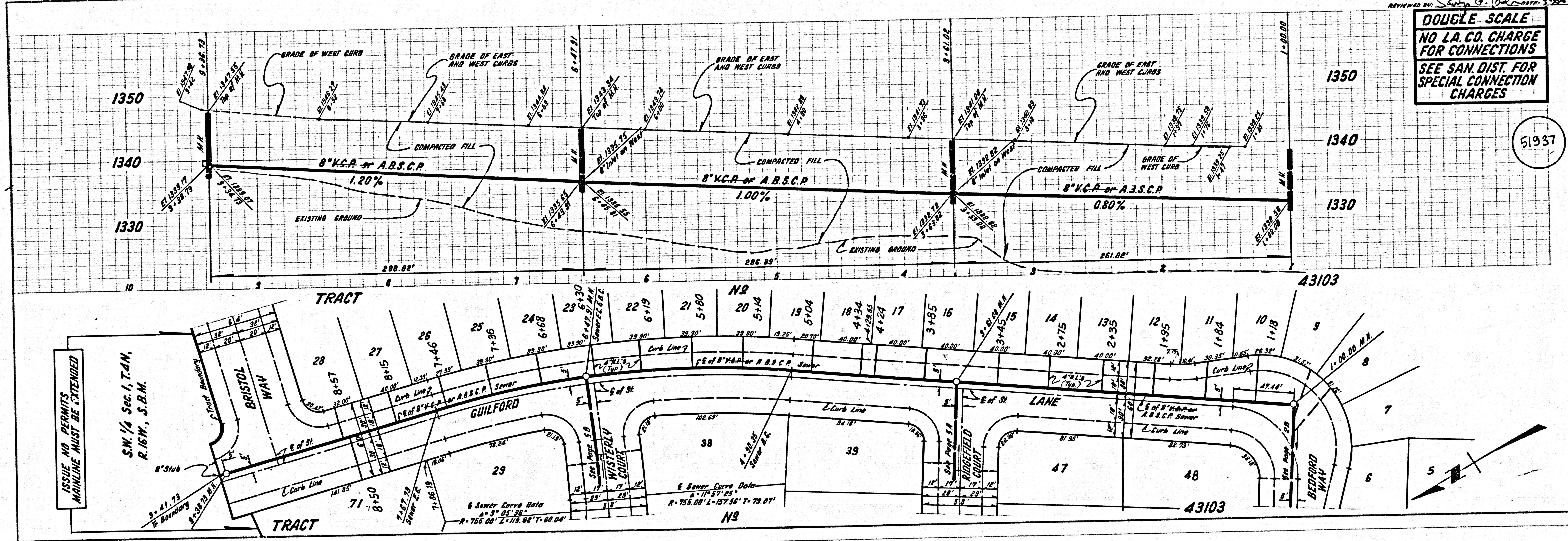
DOUBLE SCALE  
NO L.A. CO. CHARGE FOR CONNECTIONS  
SEE SAN. DIST. FOR SPECIAL CONNECTION CHARGES



51936

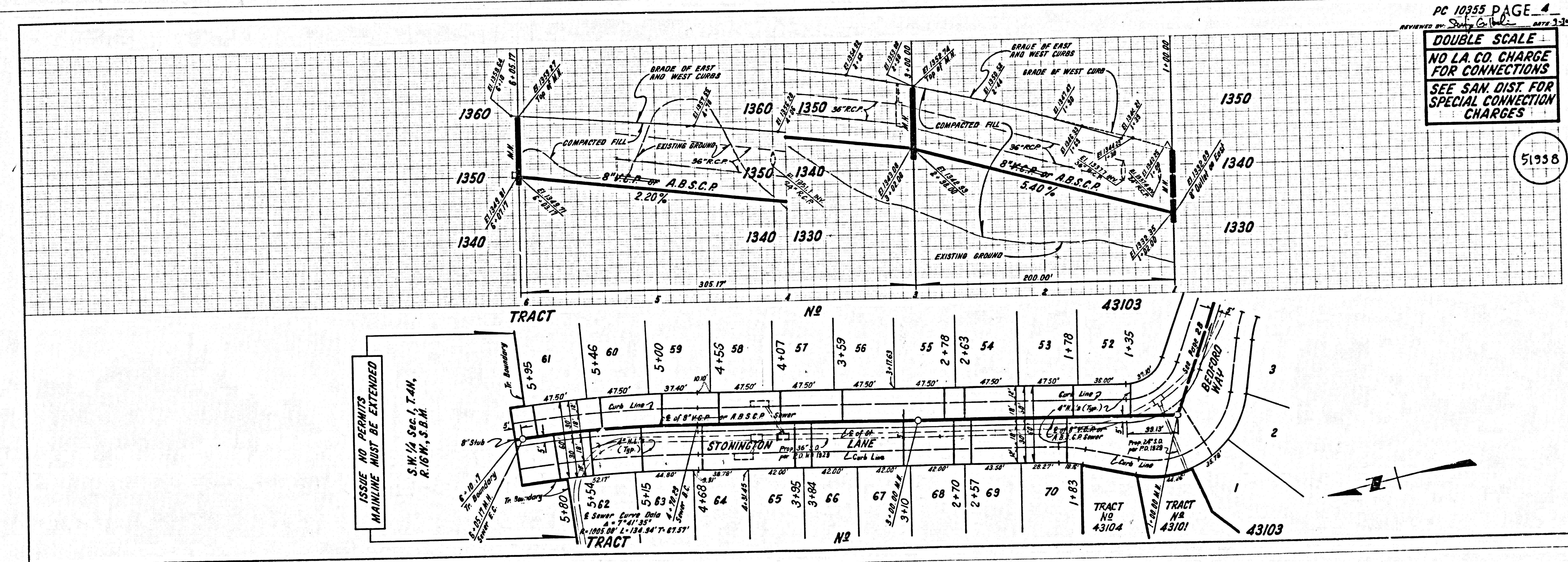
DOUBLE SCALE  
NO L.A. CO. CHARGE  
FOR CONNECTIONS  
SEE SAN. DIST. FOR  
SPECIAL CONNECTION  
CHARGES

51937



DOUBLE SCALE  
NO L.A. CO. CHARGE  
FOR CONNECTIONS  
SEE SAN. DIST. FOR  
SPECIAL CONNECTION  
CHARGES

51938



23501 39 E0164 241 12091

51937

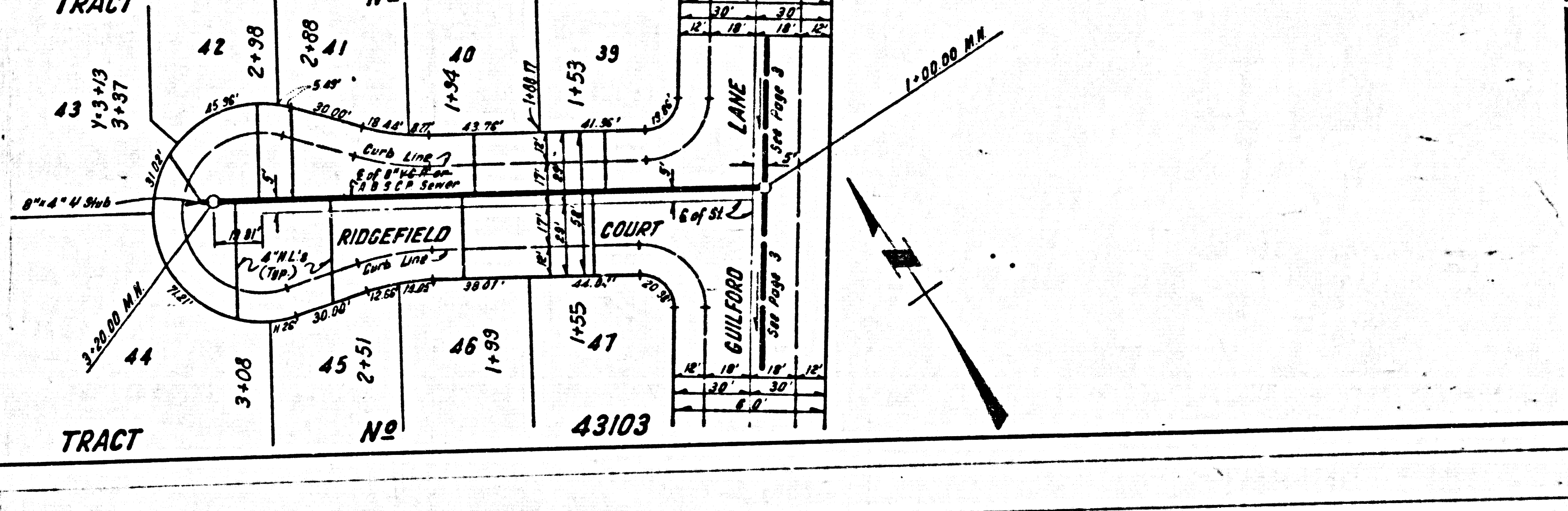
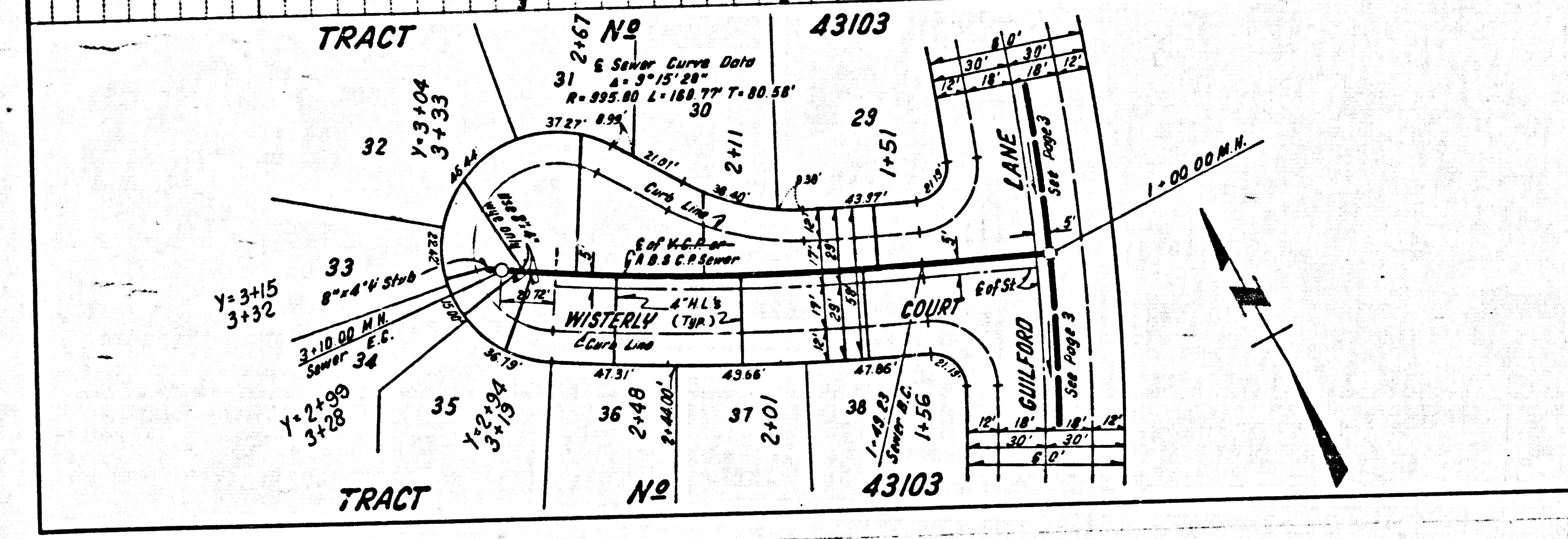
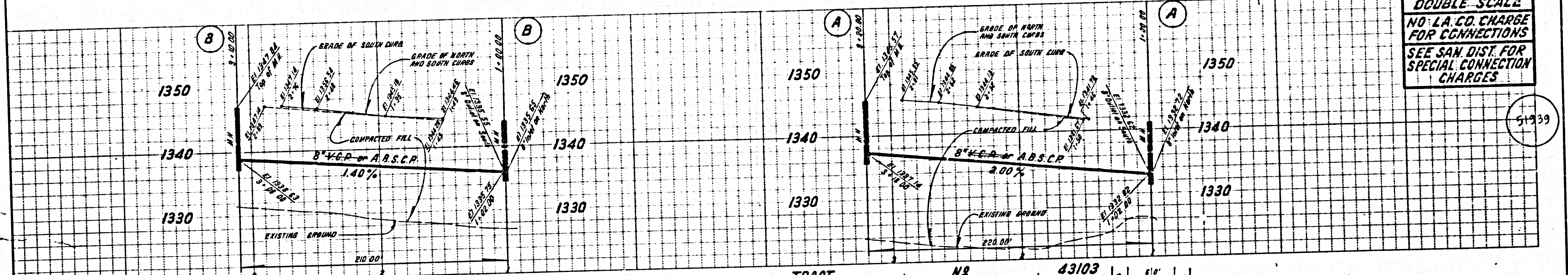
M2

M2

M2

51938

DOUBLE SCALE  
NO L.A. CO. CHARGE  
FOR CONNECTIONS  
SEE SAN. DIST. FOR  
SPECIAL CONNECTION  
CHARGES



22501 39 50154 21 134AT

3