

B.M. 4233 ELEV. 1280.914  
 RD. 8M. 740 IN N. C. B. McBEAN PKWY. 42' W. +  
 1240 E. INT. TOWERMAN RD. S. 1/2 SEC. 10.  
 W. EXT. TO LARWIN'S HOUSE TRACT.  
 NEWHALL QUAD. 19 22

**DOUBLE SCALE**

**GENERAL NOTES: CONT.**

ALL REFERENCES ON THIS PLAN TO THE COUNTY ENGINEER, THE ROAD DEPARTMENT, OR THE FLOOD CONTROL DISTRICT SHALL APPLY TO THOSE APPROPRIATE SECTIONS OF THE DEPARTMENT OF PUBLIC WORKS.

LOT 32 IS TO BE SERVED BY H.L.'S PER P.G. 10302

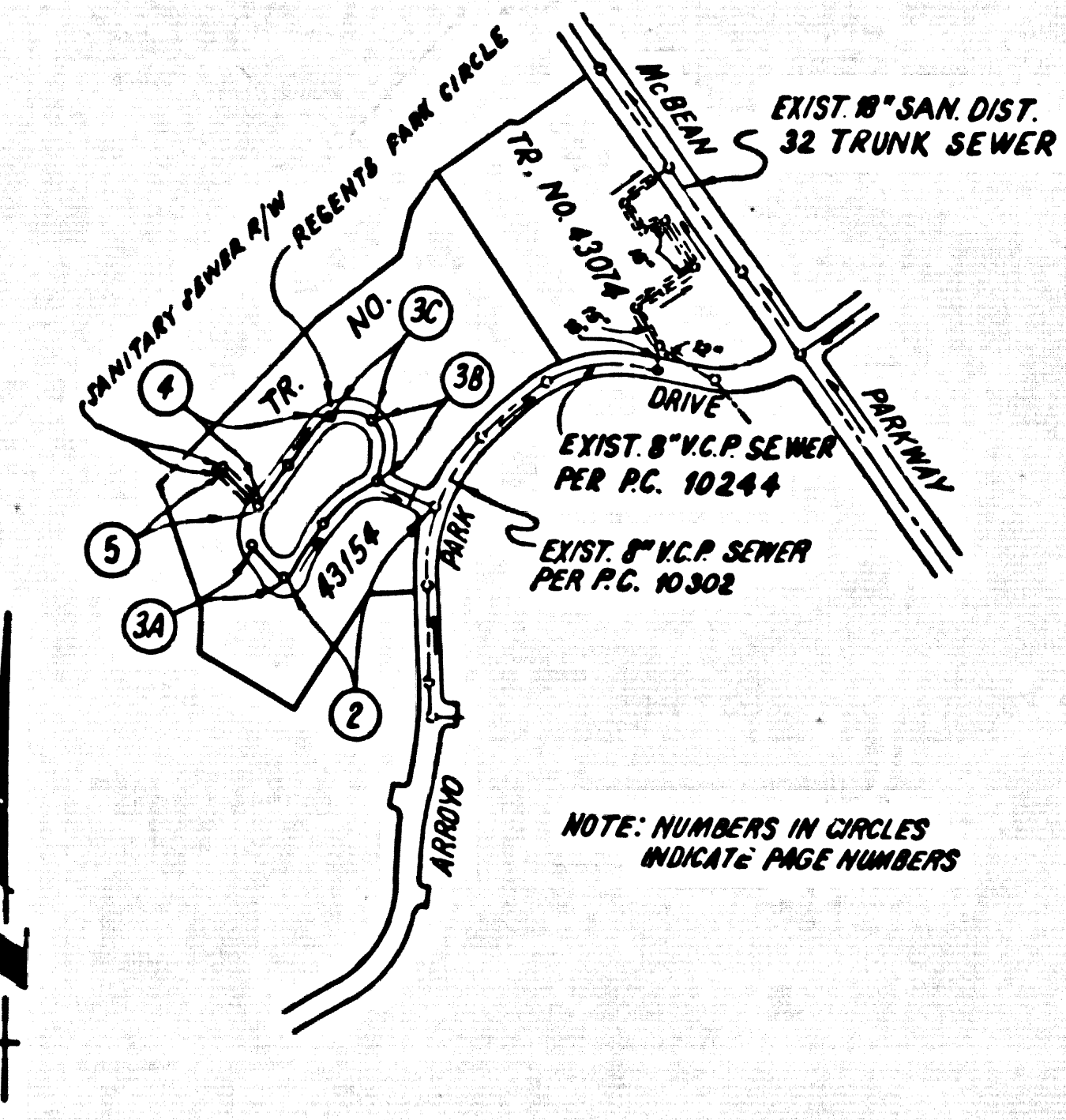
LOTS 29 THRU 31 ARE OPEN SPACE AND ARE NOT SERVED WITH HOUSE LATERAL CONNECTIONS.

ISSUE NO PERMITS UNTIL OUTLET SEWER P.G. 10302 IS ACCEPTED FOR PUBLIC USE BY THE COUNTY OF LOS ANGELES.

NO CONNECTION FOR THE DISPOSAL OF INDUSTRIAL WASTES SHALL BE MADE TO SEWERS SHOWN ON THESE DRAWINGS UNTIL A PERMIT FOR INDUSTRIAL WASTEWATER DISCHARGE HAS BEEN ISSUED BY THE SANITATION DISTRICTS FOR SAID CONNECTION.

BEFORE BREAKING INTO OR CONSTRUCTION ON A COUNTY SANITATION DISTRICT SEWER AND PRIOR TO FINAL ACCEPTANCE OF THE PROJECT, SANITATION DISTRICT INSPECTOR SHALL BE NOTIFIED BY PHONE 818 - 962-8605 SO THAT REQUIRED INSPECTION CAN BE MADE.

REVISION NO. 1 DATE 3-6-85  
 PAGE 1, REVISED INDEX MAP  
 PAGE 5, REVISED PLAN & PROFILE  
 APPROVED BY *[Signature]* 3/6/85  
 OFFICE OF DIRECTOR OF PUBLIC WORKS



INDEX MAP  
 SCALE: 1" = 600'  
 P.C. NO. 10343  
 TRACT NO. 43154

**GENERAL NOTES:**

- ELEVATIONS ARE IN FEET ABOVE U.S.C. & G.S. MEAN SEA LEVEL DATUM OF 1985.
- NO REVISIONS SHALL BE MADE IN THESE PLANS WITHOUT THE APPROVAL OF THE COUNTY ENGINEER.
- NO REPRESENTATIVE OF THE COUNTY ENGINEER WILL SURVEY OR LAY OUT ANY PORTION OF THE WORK.
- GRADES TO WHICH THIS IMPROVEMENT IS TO BE CONSTRUCTED ARE SHOWN ON PLANS AND PROFILES. GRADE POINTS FOR TOP OF CURBS, CENTER LINE OF STREETS, OR CENTER LINE OF ALLEYS ARE SHOWN BY CIRCLES ON PROFILES AT ALL POINTS BETWEEN DESIGNATED POINTS. THE GRADE SHALL BE ESTABLISHED AS TO CONFORM TO A STRAIGHT LINE DRAWN BETWEEN SAID DESIGNATED POINTS.
- THE PRIVATE ENGINEER SHALL FURNISH THE COUNTY ENGINEER WITH GRADE SHEETS AND STATIONING FOR ALL HOUSE LATERALS AND 12" OR 18" MANHOLES AND SHALL PROVIDE STAKES FOR THEM AT THEIR PROPER LOCATIONS WITH ELEVATIONS PLAINLY MARKED. ALL HOUSE LATERALS SHALL BE CONSTRUCTED IN A STRAIGHT ALIGNMENT AT RIGHT ANGLES FROM THE MAIN LINE STREET FLIGHT. AS SHOWN ON THE PLANS. HOUSE LATERALS FROM CHIMNEYS SHALL NOT HAVE AN ANGLE OF LESS THAN 45° WITH THE MAIN LINE SEWER. ANY CHANGE IN ALIGNMENT SHALL BE REQUESTED IN WRITING BY THE PRIVATE ENGINEER.
- THE PRIVATE ENGINEER SHALL FURNISH THE HOUSE LATERAL DEPTH AT THE PROPERTY LINE BELOW THE TOP OF CURB ELEVATION FOR EACH HOUSE LATERAL ON THE GRADE SHEET.
- BEFORE WORK CAN BE STARTED, THE CONTRACTOR MUST OBTAIN A PERMIT TO FURNISH IN COUNTY STREETS FROM THE L.A. COUNTY ROAD DEPT., DISTRICT OFFICE NO. 5 AND PAY A FEE TO THE COUNTY ENGINEER, 800 S. VENOMT AVENUE, LOS ANGELES, CA 90001 TO COVER THE COST OF CONSTRUCTION INSPECTION AND RECORD PLANS.
- IF WORK IS TO BE DONE IN A STATE HIGHWAY A PERMIT MUST BE OBTAINED FROM THE STATE OF CALIFORNIA DIVISION OF HIGHWAYS, 120 SOUTH BRIDGE STREET, LOS ANGELES, CALIFORNIA.
- APPROVAL OF THIS PLAN BY THE COUNTY OF LOS ANGELES DOES NOT CONSTITUTE A REPRESENTATION AS TO THE ACCURACY OF THE LOCATION OF OR THE EXISTENCE OR NON-EXISTENCE OF ANY UNDERGROUND UTILITY PIPE, OR STRUCTURE WITHIN THE LIMITS OF THE PROJECT. THIS NOTE APPLIES TO ALL PAGES.
- REFER TO SECTION 7.04.1 OF THE STANDARD SPECIFICATIONS, REGARDING SAFETY CODES.
- PRIOR TO THE RESUMPTION OF THE REQUIRED SEWER CONSTRUCTION PERMIT, THE CONTRACTOR SHALL OBTAIN AND FILE WITH THE COUNTY ENGINEER COMPLETION OF A PERMIT TO FURNISH IN COUNTY STREETS FROM THE LOS ANGELES COUNTY ROAD DEPARTMENT, A PERMIT FOR EXCAVATIONS AND TRENCHES FROM THE STATE OF CALIFORNIA DIVISION OF INDUSTRIAL SAFETY AND A CERTIFICATE OF WORKERS COMPENSATION INSURANCE WITH THE DEPARTMENT OF COUNTY ENGINEER, 800 SOUTH VENOMT, 90010, LOS ANGELES, CALIFORNIA 90001. THESE DOCUMENTS MUST BE NOTIFIED IN WRITING 10 DAYS PRIOR TO CANCELLATION OF PERMIT.

**CONSTRUCTION NOTES:**

- WORK SHALL BE CONSTRUCTED ACCORDING TO THE STANDARD SPECIFICATIONS FOR PUBLIC WORKS CONSTRUCTION (1985) WITH (REVISIONS) PERMITS AND COUNTY ENGINEER SPECIAL PROVISIONS FOR THE CONSTRUCTION OF SANITARY SEWERS DATED 8-27-85.
- THE CONTRACTOR SHALL NOTIFY THE COUNTY ENGINEER BY TELEPHONE 818-962-8605 AT LEAST TWENTY-FOUR HOURS BEFORE STARTING ANY WORK UNDER THE CONTRACT.
- HOUSE LATERALS TO BE CONSTRUCTED WITH INVERTS AT PROPERTY LINE 8 FEET BELOW CURB GRADE EXCEPT AS NOTED.
- 8" OR 12" BRANCHES MAY BE USED FOR CONNECTIONS TO MANHOLE SEWERS EXCEPT AS NOTED.
- ALL STRUCTURES SHALL BE EITHER BRICK MANHOLES PER 8-3 OR PRECAST CONCRETE MANHOLES PER 8-3B, EXCEPT AS NOTED.
- PROVIDE STAKES ON THE PROPERTY LINE OR PROPERTY LINES PRODUCED AT RIGHT ANGLES TO THE SEWER LINE AT THE CENTER LINE OF EACH MANHOLE.
- MANHOLE TOPS IN UNIMPROVED AREAS OF 4" TO BE 8" INCHES ABOVE FINISHED GRADE.
- WITHEDED CLAY PIPE JOINTS SHALL BE TYPE "C" OR "D" PER STANDARD SPECIFICATIONS SECTION 380-2.
- IF A POWER POLE IS WITHIN THREE FEET OF THE SEWER, THE SEWER SHALL BE ENCASED, PER 8-3B, CASE 2, TWO FEET ON EACH SIDE FROM THE POINT OF INTERFERENCE.
- IF DURING THE COURSE OF CONSTRUCTION IT IS DETERMINED THAT THERE IS LESS THAN FOUR FEET OF COVER OVER THE TOP OF A MAIN LINE OR HOUSE LATERAL SEWER WHICH IS NOT INDICATED ON THE PLANS, THE PIPE SHALL BE ENCASED PER 8-3B, CASE 2 UNLESS OTHERWISE APPROVED BY THE COUNTY ENGINEER.
- ALL JOINTS BETWEEN CAST IRON PIPE AND WITHEDED CLAY PIPE SHALL BE MADE WITH A RUBBER BELLOW JOINT, TYPE "C" OR "D", (WITH BUSHING IF NECESSARY) PER STANDARD SPECIFICATIONS, SECTION 380-3.
- SEWERS TO BE TESTED FOR LEAKAGE PER SECTION 380-1.4 OF THE STANDARD SPECIFICATIONS AND SPECIAL PROVISIONS.
- RESURFACE ALL TRENCHES WITHIN PAVED AREAS TO MEET L.A. COUNTY ROAD DEPT. OR CALIFORNIA STATE HIGHWAY REQUIREMENTS IN ACCORDANCE WITH PERMITS.
- FULL COMPLIANCE WITH SECTION 380-1.3.5 OF THE SPECIAL PROVISIONS WILL BE REQUIRED FOR BACKFILL IN STREETS. CERTIFICATION OF BACKFILL COMPOSITION AND SAND EQUIVALENTS BY A QUALIFIED, REGISTERED TESTING LABORATORY SHALL BE PROVIDED BY THE PERMITTEE PRIOR TO THE RESUMPTION OF A CERTIFICATE OF PARTIAL ACCEPTANCE.
- SPECIAL BACKFILL IN EASEMENT CONSTRUCTION: (A) BACKFILL TRENCH AND REPLACE OTHER EARTH SO AS TO ACHIEVE THE NATURAL OR FINISHED GRADES AND SLOPES SHOWN ON THE GRADING PLAN APPROVED FOR THE DEVELOPMENT BY THE BUILDING AND SAFETY DIVISION. (B) ALL BACKFILL AND EARTH REPLACEMENT SHALL BE COMPACTED TO A MINIMUM OF 95% MAXIMUM DENSITY PER A.S.T.M. STD. METHOD OF TEST D1557 AS MODIFIED. ACCEPTABLE CERTIFICATION OF SUCH COMPACTION SHALL BE SUBMITTED TO THE CONSTRUCTION DIVISION - PUBLIC WORKS.

PROFILE, ALIGNMENT AND GRADE OF  
**SANITARY SEWERS**  
 TO BE CONSTRUCTED IN

TRACT NO. 43154  
 PRIVATE CONTRACT NO. 10343

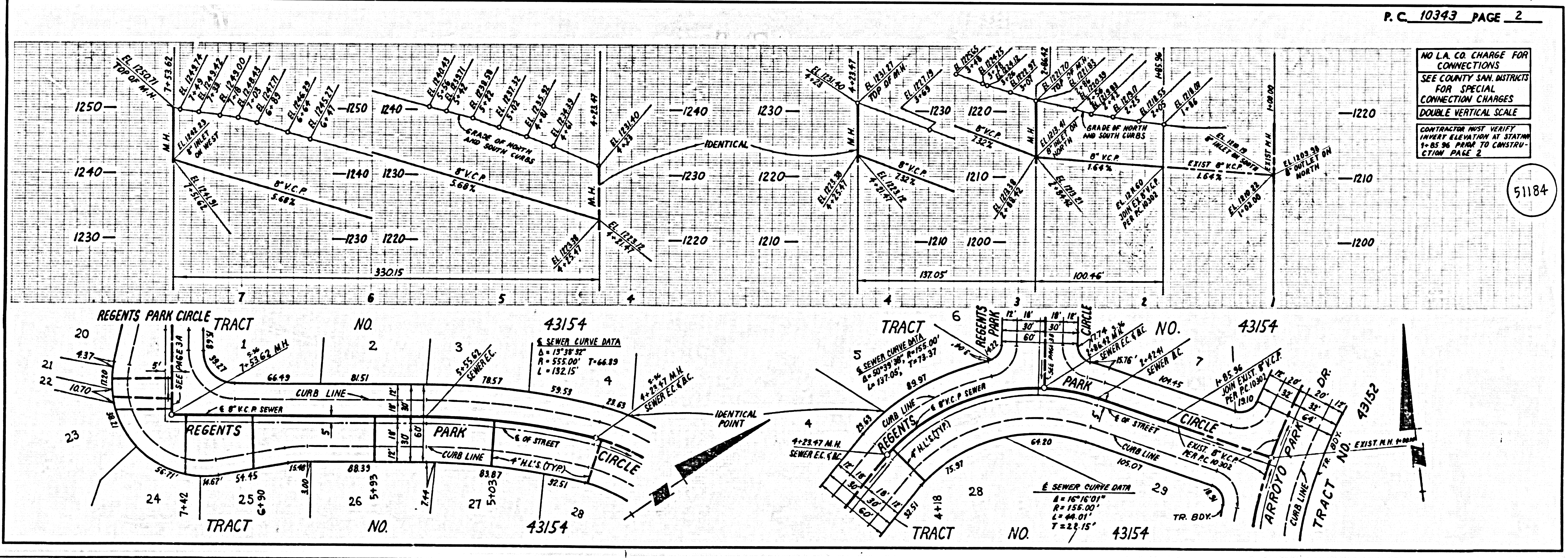
A-47-G, H-2  
 3 SHEETS, 5 PAGES  
 SCALE: VERT. 1" = 10' HORIZ. 1" = 100' FEBRUARY, 1985  
 PREPARED IN THE OFFICES OF

STAND ENGINEERING ASSOCIATES  
 15230 BURBANK BLVD.  
 VAN NUYS, CALIFORNIA 91411  
 (818) 787-9550  
 BY: *[Signature]*  
 REG. C.E. No. 21833

THE FOLLOWING LATEST REVISED STANDARD PLANS ON FILE IN THE OFFICE OF THE COUNTY ENGINEER SHALL APPLY IN THE CONSTRUCTION OF THIS PROJECT:

UNIFORM	8-3
MINIMUM PUBLIC SAFETY REQUIREMENTS	8-3
BRICK MANHOLES	8-3
STANDARD MANHOLE RFP	8-3
BRICKS FOR SEWER PIPE	8-3
CHIMNEYS AND CHIMNEY	8-3
PIPE ON THE SURFACE	8-3
ALUMINUM MANHOLE FRAMES AND COVERS	8-3
LOCATING MANHOLE FRAMES AND COVERS	8-3
NON-APPROVED PRECAST CONCRETE MANHOLES	8-3

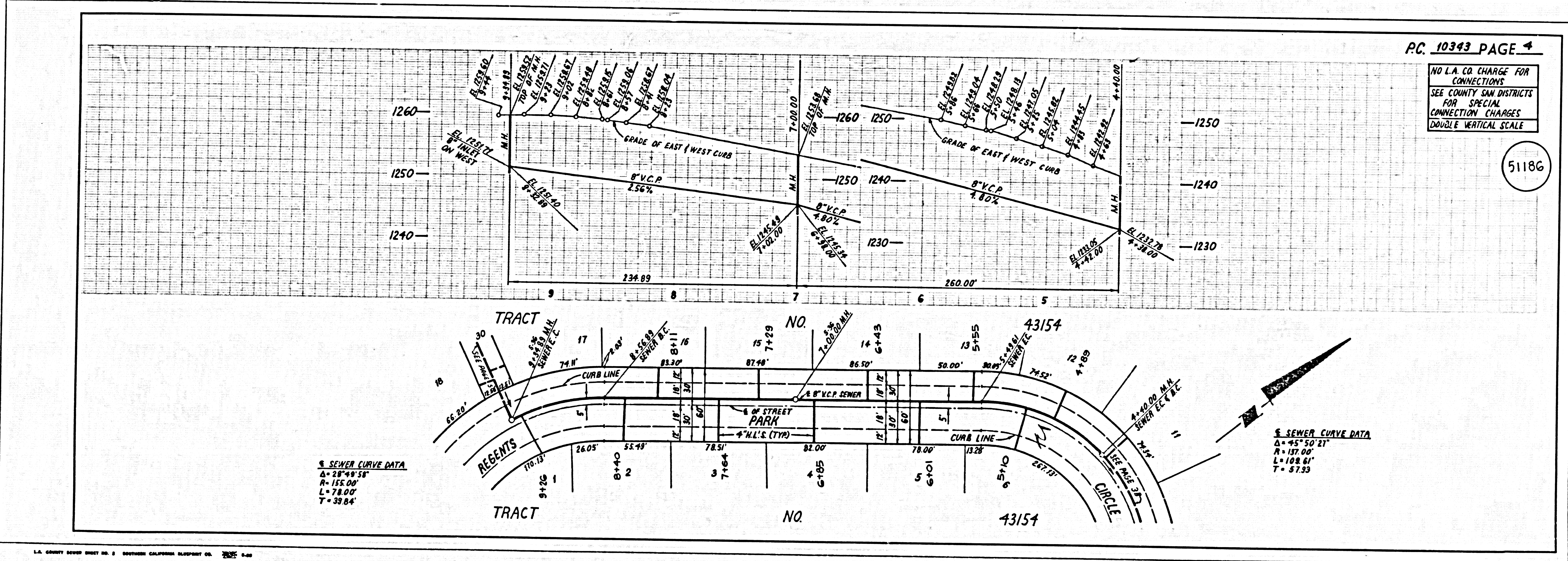
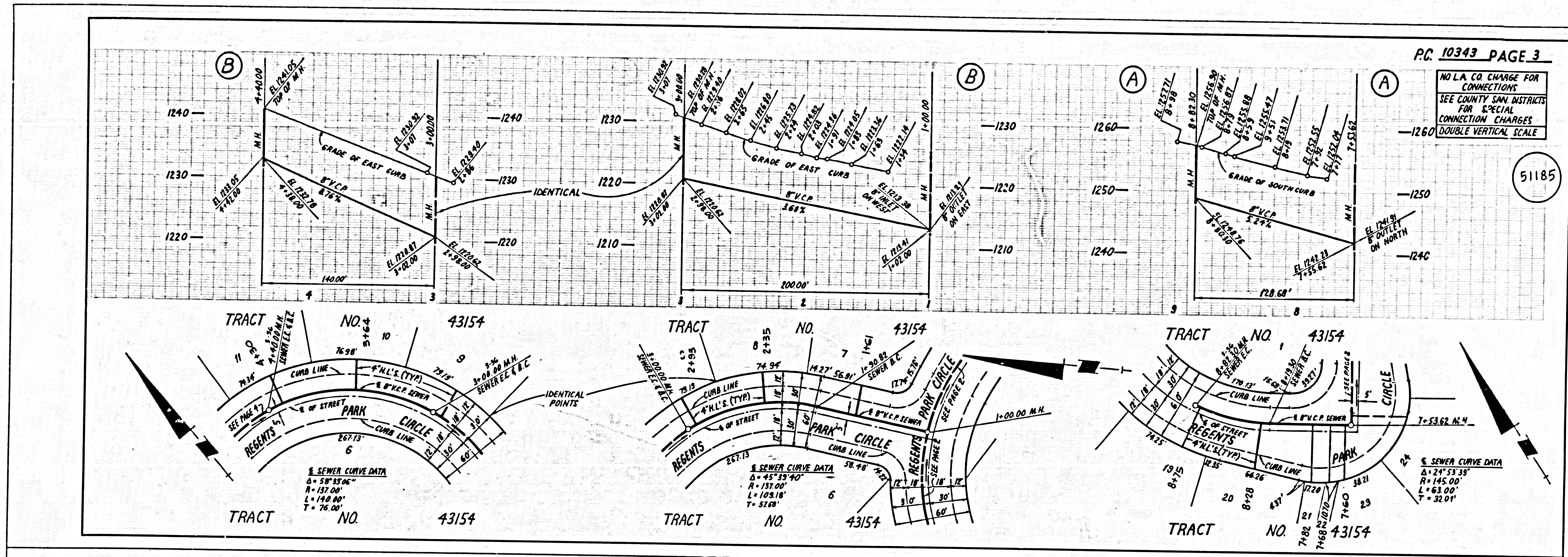
COUNTY OF LOS ANGELES, CALIFORNIA  
 THOMAS A. TIDEHART, DIRECTOR OF PUBLIC WORKS  
 CHARLES W. CARRY, CHIEF ENGINEER  
 CO. SAN. DIST. NO. 32  
 APPROVED: *[Signature]* 5/19/85  
 APPROVED: *[Signature]* 5/19/85  
 CHECKED: *[Signature]* 5-20-85  
 REG. C.E. NO. 33134  
 SANTA CLARITA VALLEY BLDG. DIST. R. 2



NO L.A. CO. CHARGE FOR CONNECTIONS  
 SEE COUNTY SAN. DISTRICTS FOR SPECIAL CONNECTION CHARGES  
 DOUBLE VERTICAL SCALE  
 CONTRACTOR MUST VERIFY EXISTING ELEVATION AT STATION 1+85.96 PRIOR TO CONSTRUCTION PAGE 2

51184

L.A. COUNTY ENGINEER DIST. NO. 1 DIVISION OF PUBLIC WORKS DISTRICT OFFICE NO. 5



5  
 PC 10343  
 29  
 43154 ON TRACT

