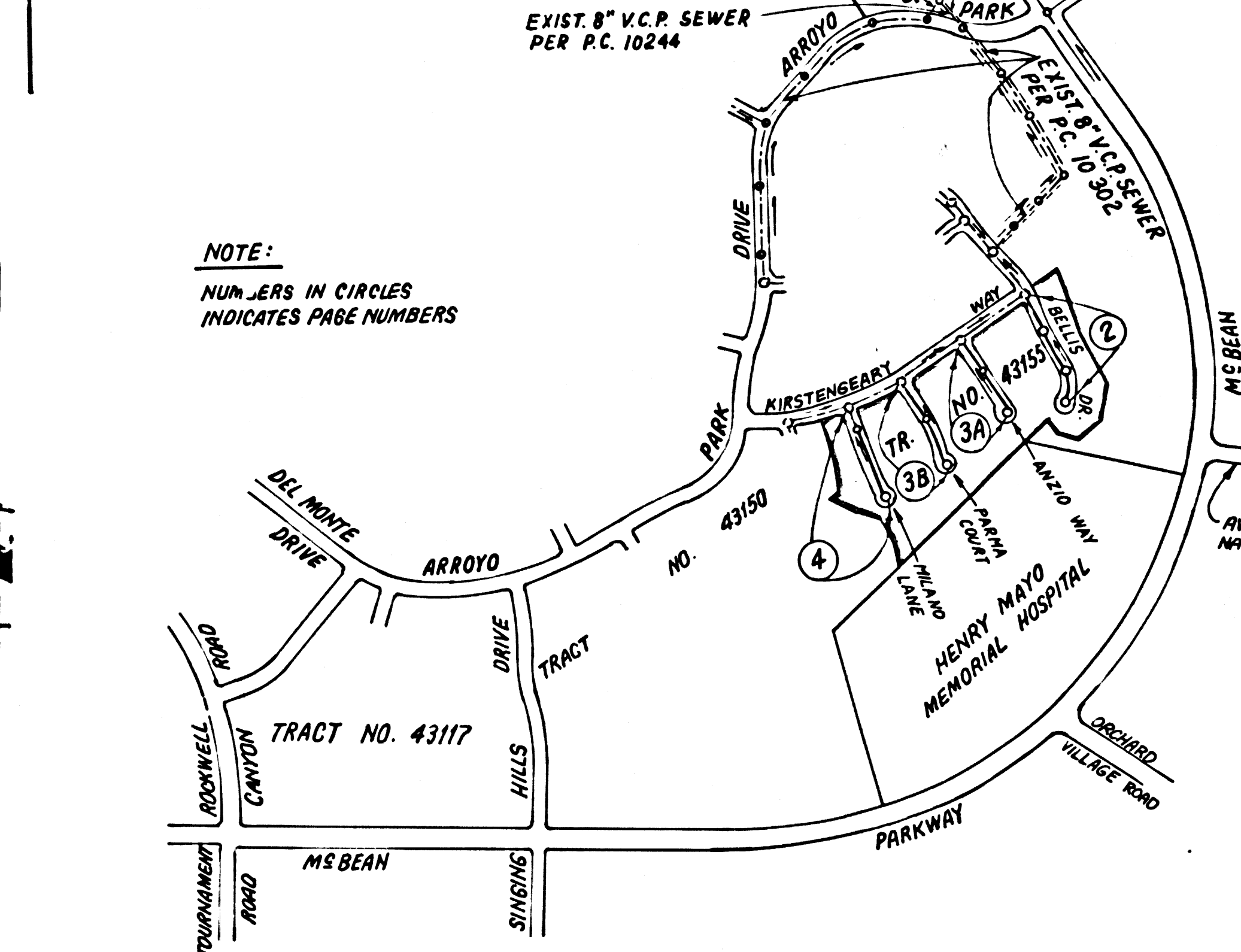


B.M. BL 4233 ELEV. 1280.814  
 RD BM 746 IN N.C.B. MS BEAN PRKWY  
 42 N° 1240 E INT TOURNAMENT RD S  
 W/O CONC. WK ENT TO LARWINS  
 HOUSE TRACT  
 NEWHALL QUAD. 1972



NOTE:  
 NUMBERS IN CIRCLES  
 INDICATES PAGE NUMBERS

INDEX MAP  
 SCALE: 1" = 600'  
 P.C. NO. 10344  
 TRACT NO. 43155

**DOUBLE SCALE**

GENERAL NOTES: CONT'D.  
 12. ALL REFERENCES ON THIS PLAN TO THE COUNTY ENGINEER, THE ROAD DEPARTMENT, OR THE FLOOD CONTROL DISTRICT SHALL APPLY TO THOSE APPROPRIATE SECTIONS OF THE DEPARTMENT OF PUBLIC WORKS.

ISSUE NO PERMITS UNTIL OUTLET SEWERS  
 P.C. 10244 & P.C. 10302 ARE ACCEPTED FOR PUBLIC  
 USE BY THE COUNTY OF LOS ANGELES.

LOTS 1, 2, 18 THRU 21, 30 THRU 41, 58 & 59 ARE  
 SERVED BY P.C. 10302

LOTS 80 THRU 82 ARE OPEN SPACE LOTS & ARE NOT  
 SERVED WITH HOUSE LATERAL.

NO CONNECTION FOR THE DISPOSAL OF INDUSTRIAL WASTES  
 SHALL BE MADE TO SEWERS SHOWN ON THESE DRAWINGS UNTIL  
 A PERMIT FOR INDUSTRIAL WASTEWATER DISCHARGE HAS BEEN  
 ISSUED BY THE SANITATION DISTRICTS FOR SAID CONNECTION.

BEFORE BREAKING INTO OR CONSTRUCTION ON A COUNTY  
 SANITATION DISTRICT SEWER AND PRIOR TO FINAL  
 ACCEPTANCE OF THE PROJECT, SANITATION DISTRICT  
 INSPECTOR SHALL BE NOTIFIED BY PHONE 515 - 962-8605  
 SO THAT REQUIRED INSPECTION CAN BE MADE.

**GENERAL NOTES:**

- ELEVATIONS ARE IN FEET ABOVE U.S.C. & G.S. SEA LEVEL DATUM OF 1988.
- NO REVISIONS SHALL BE MADE IN THESE PLANS WITHOUT THE APPROVAL OF THE COUNTY ENGINEER.
- NO REPRESENTATIVE OF THE COUNTY ENGINEER WILL SUEVEY OR LAY OUT ANY PORTION OF THE WORK.
- GRADES TO WHICH THIS IMPROVEMENT IS TO BE CONSTRUCTED ARE SHOWN ON PLANS AND PROFILES GRADE POINTS FOR TOP OF CURBS, CENTER LINE OF STREETS, OR CENTER LINE OF ALLEYS ARE SHOWN BY CIRCLES ON PROFILES AT ALL POINTS BETWEEN DESIGNATED POINTS THE GRADE SHALL BE ESTABLISHED SO AS TO CONFORM TO A STRAIGHT LINE OR CURVE BETWEEN SAID DESIGNATED POINTS.
- THE PRIVATE ENGINEER SHALL FURNISH THE COUNTY ENGINEER WITH GRADE SHEETS AND STATIONING FOR ALL HOUSE LATERALS AND "Y" OR "T" BRANCHES AND SHALL PROVIDE STAKES FOR THEM AT THEIR PROPER LOCATIONS WITH STATIONING PLAINLY MARKED. ALL HOUSE LATERALS SHALL BE CONSTRUCTED IN A STRAIGHT ALIGNMENT AT RIGHT ANGLES FROM THE MAIN LINE SEWER EXCEPT AS SHOWN ON THE PLANS. HOUSE LATERALS FROM CHIMNEYS SHALL NOT HAVE AN ANGLE OF LESS THAN 45° WITH THE MAIN LINE SEWER. ANY CHANGE IN ALIGNMENT SHALL BE REQUESTED IN WRITING BY THE PRIVATE ENGINEER.
- THE PRIVATE ENGINEER SHALL FURNISH THE HOUSE LATERAL DEPTH AT THE PROPERTY LINE BELOW THE TOP OF CURB ELEVATION FOR EACH HOUSE LATERAL ON THE GRADE SHEET.
- BEFORE WORK CAN BE STARTED, THE CONTRACTOR MUST OBTAIN A PERMIT TO EXCAVATE IN COUNTY STREETS FROM THE L.A. COUNTY ROAD DEPT. DISTRICT OFFICE NO. 3, AND PAY A FEE TO THE COUNTY ENGINEER, 580 S. VERMONT AVENUE, LOS ANGELES, CA 90005, TO COVER THE COST OF CONSTRUCTION INSPECTION AND RECORD PLANS.
- WORK TO BE DONE IN A STATE HIGHWAY AREA MUST BE OBTAINED FROM THE STATE OF CALIFORNIA, DIVISION OF HIGHWAYS, 18, SOUTH SPRING STREET, LOS ANGELES, CALIFORNIA.
- APPROVAL OF THIS PLAN BY THE COUNTY OF LOS ANGELES DOES NOT CONSTITUTE A REPRESENTATION AS TO THE ACCURACY OF THE LOCATION OF OR THE EXISTENCE OR NON-EXISTENCE OF ANY UNDERGROUND UTILITY PIPE, OR STRUCTURE WITHIN THE LIMITS OF THE PROJECT. THIS NOTE APPLIES TO ALL PAGES.
- REFER TO SECTION 7.10.4.1 OF THE STANDARD SPECIFICATIONS, REGARDING SAFETY ORDERS.
- PRIOR TO THE ISSUANCE OF THE REQUIRED SEWER CONSTRUCTION PERMIT, THE CONTRACTOR SHALL OBTAIN AND FILE WITH THE COUNTY ENGINEER COPIES OF A PERMIT TO EXCAVATE IN COUNTY STREETS FROM THE LOS ANGELES COUNTY ROAD DEPARTMENT, A PERMIT FOR EXCAVATIONS AND TRENCHES FROM THE STATE OF CALIFORNIA, DIVISION OF INDUSTRIAL SAFETY AND A CERTIFICATE OF WORKERS COMPENSATION INSURANCE WITH THE DEPARTMENT OF COUNTY ENGINEER, 580 SOUTH VERMONT, RM. 408, LOS ANGELES, CALIFORNIA 90005, NAMED AS THE CERTIFICATE HOLDER TO BE NOTIFIED 30 DAYS PRIOR TO CANCELLATION OF POLICY.

**CONSTRUCTION NOTES:**

- WORK SHALL BE CONSTRUCTED ACCORDING TO THE STANDARD SPECIFICATIONS FOR PUBLIC WORKS CONSTRUCTION (1985 EDITION) AND COUNTY ENGINEER SPECIAL PROVISIONS FOR THE CONSTRUCTION OF SANITARY SEWERS DATED SEPT. 21, 1978, AND SHALL BE PROSECUTED ONLY IN THE PRESENCE OF THE COUNTY ENGINEER.
- THE CONTRACTOR SHALL NOTIFY THE CONSTRUCTION DIVISION - PUBLIC WORKS BY TELEPHONE (213) 223-8581 AT LEAST TWENTY-FOUR HOURS BEFORE STARTING ANY WORK UNDER THIS CONTRACT.
- HOUSE LATERALS TO BE CONSTRUCTED WITH INVERTS AT PROPERTY LINE 8 FEET BELOW CURB GRADE EXCEPT AS NOTED.
- WYE OR TEE BRANCHES MAY BE USED FOR CONNECTIONS TO MAINLINE SEWERS EXCEPT AS NOTED.
- ALL STRUCTURES SHALL BE EITHER BRICK MANHOLES PER S.D. OR PRECAST CONCRETE MANHOLES PER S.D. EXCEPT AS NOTED.
- PROVIDE STAKES ON THE PROPERTY LINE OR PROPERTY LINES PRODUCED AT RIGHT ANGLES TO THE SEWER LINE AT THE CENTER LINE OF EACH MANHOLE.
- MANHOLE TOPS IN UNIMPROVED RIGHTS OF WAY TO BE SIX INCHES ABOVE FINISHED GRADE.
- WITRIFIED CLAY PIPE JOINTS SHALL BE TYPE "C" OR "D" PER STANDARD SPECIFICATIONS SECTION 308.2.
- IF A POWER POLE IS WITHIN THREE FEET OF THE SEWER, THE SEWER SHALL BE ENCASED, PER S.D. CASE II, TWO FEET ON EACH SIDE FROM THE POINT OF INTERFERENCE.
- IF DURING THE COURSE OF CONSTRUCTION IT IS DETERMINED THAT THERE IS LESS THAN FOUR FEET OF COVER OVER THE TOP OF A MAIN LINE OR HOUSE LATERAL SEWER WHICH IS NOT INDICATED ON THE PLANS, THE PIPE SHALL BE ENCASED PER S.D. CASE I UNLESS OTHERWISE APPROVED BY THE COUNTY ENGINEER.
- ALL JOINTS BETWEEN CAST IRON PIPE AND WITRIFIED CLAY PIPE SHALL BE MADE WITH A RUBBER SLEEVE JOINT, TYPE "C" OR "D" (WITH BUSHING IF NECESSARY) PER STANDARD SPECIFICATIONS SECTION 308.2.
- SEWERS TO BE TESTED FOR LEAKAGE PER SECTION 308.1 OF THE STANDARD SPECIFICATIONS AND SPECIAL PROVISIONS.
- RESURFACE ALL TRENCHES WITHIN PAVED AREAS TO MEET L.A. COUNTY ROAD DEPT. OR CALIFORNIA STATE HIGHWAY REQUIREMENTS IN ACCORDANCE WITH PERMITS.
- FULL COMPLIANCE WITH SECTION 308.1.5 OF THE SPECIAL PROVISIONS WILL BE REQUIRED FOR BACKFILL IN STREETS. CERTIFICATION OF BACKFILL COMPACTION AND SAND EQUIVALENTS BY A QUALIFIED, REGISTERED TESTING LABORATORY SHALL BE PROVIDED BY THE PERMITTEE PRIOR TO THE ISSUANCE OF A CERTIFICATE OF PARTIAL ACCEPTANCE.
- SPECIAL BACKFILL IN EXISTING CONSTRUCTION (A) BACKFILL TRENCH AND REPLACE OTHER EARTH SO AS TO ACHIEVE THE NATURAL OR FINISHED GRADES AND SLOPES SHOWN ON THE GRADING PLAN APPROVED FOR THIS DEVELOPMENT BY THE BUILDING AND SAFETY DIVISION (B) ALL BACKFILL AND EARTH REPLACED SHALL BE COMPACTED TO A MINIMUM OF 90% OF MAXIMUM DENSITY PER A.S.T.M. STD. METHOD OF TEST D99 BY 85% MOISTURE, ACCEPTABLE CERTIFICATION OF SUCH COMPACTION SHALL BE SUBMITTED TO THE CONSTRUCTION DIVISION - PUBLIC WORKS.

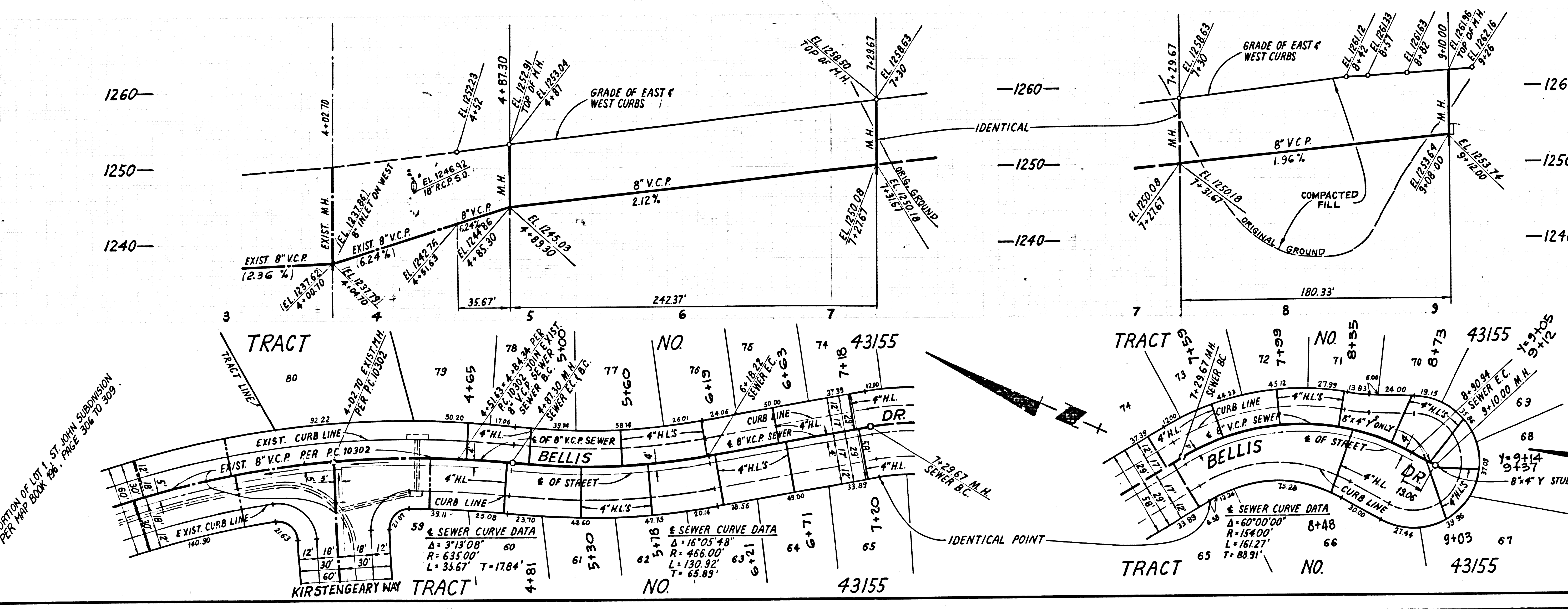
TO BE CONSTRUCTED IN  
**TRACT NO. 43155**  
 PRIVATE CONTRACT NO. 10344  
 INDEX A-47

2 SHEETS, 4 PAGES  
 SCALE: HORIZ. 1" = 40' VERT. 1" = 4'  
 FEBRUARY, 1985  
 PREPARED IN THE OFFICES OF  
**SHAPIRO ENGINEERS ASSOCIATES**  
 15230 BURBANK BLVD. VAN NUYS,  
 CALIFORNIA 91411, (818) 781-8550  
 REG. C.E. No. 21892

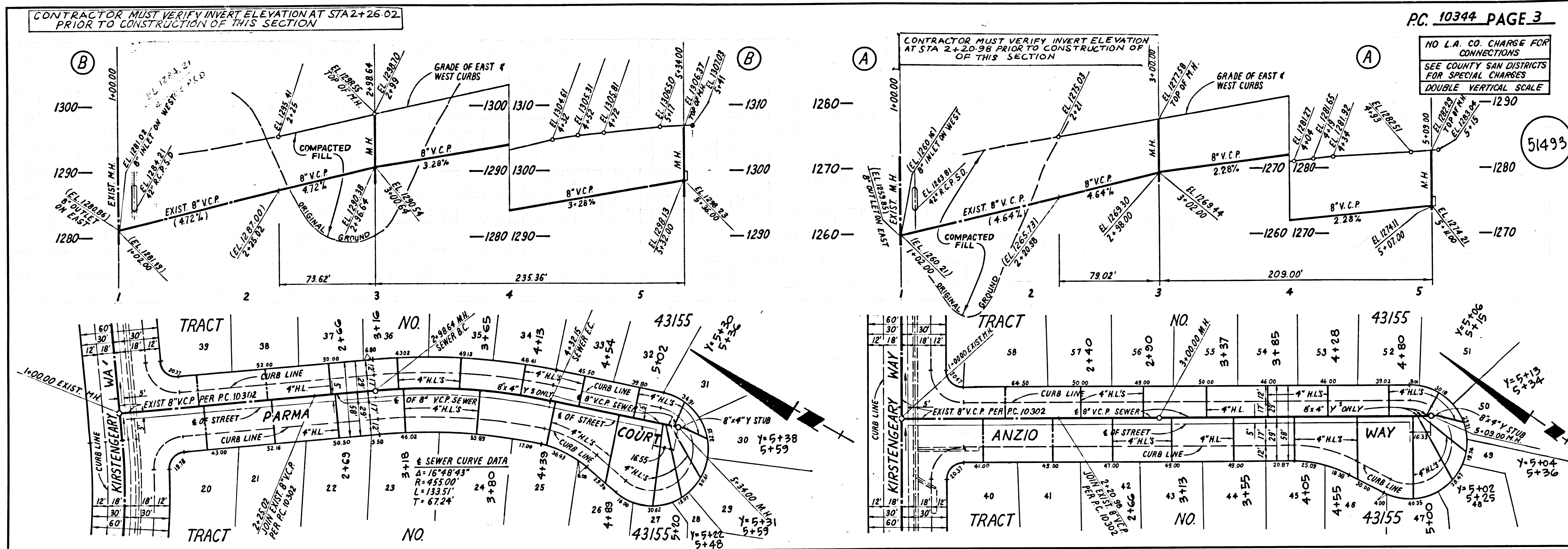
THE FOLLOWING LATEST REVISED STANDARD PLANS ON FILE IN THE OFFICE OF THE COUNTY ENGINEER SHALL APPLY IN THE CONSTRUCTION OF THIS PROJECT:

ENGINE	5-1
MINIMUM PUBLIC SAFETY REQUIREMENTS	5-2
BRICK MANHOLE	5-3
STANDARD MANHOLE WITH	5-4
BRICK FOR SEWER PIPE	5-5
CLEANING AND ENCASING	5-6
WYE OR TEE SUPPORT	5-7
ALTERNATE TRENCH WIDTH	5-8
LOCATING MANHOLE FRAME AND COVER	5-9
NON-MANHOLES PRECAST CONCRETE MANHOLE	5-10

COUNTY OF LOS ANGELES, CALIFORNIA  
 THOMAS A. TIDEMANSON, DIRECTOR OF PUBLIC WORKS  
 CHARLES CARRY, CHIEF ENGINEER  
 CO. SAN. DIST. NO. 33  
 APPROVED: 9/6/85  
 DATE: 9/9/85  
 CHECKED: 9/23/85  
 DATE: 9/23/85  
 REG. C.E. NO. 33124  
 SANTA CLARITA VALLEY BLDG. DIST. 82



NO L.A. CO. CHARGE FOR CONNECTIONS  
 SEE COUNTY SAN DISTRICTS FOR SPECIAL CHARGES  
 DOUBLE VERTICAL SCALE  
 CONTRACTOR MUST VERIFY INVERT ELEVATION AT STA 4+51.63 PRIOR TO CONSTRUCTION OF THIS PAGE.

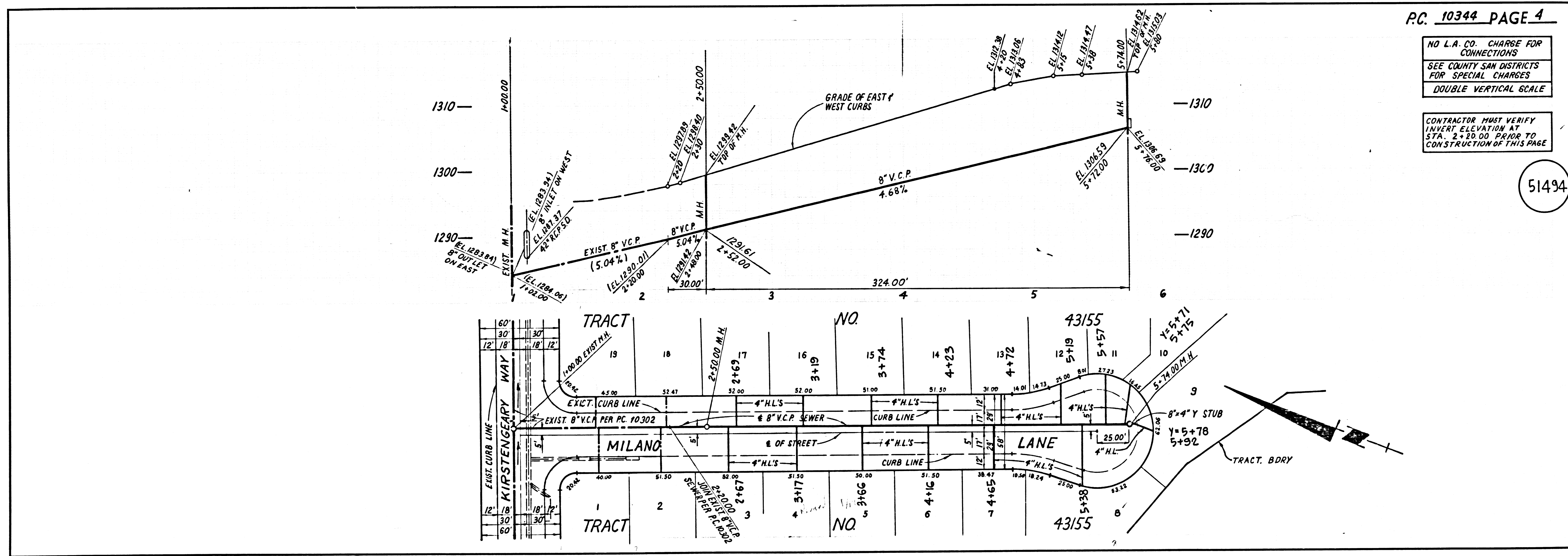


CONTRACTOR MUST VERIFY INVERT ELEVATION AT STA 2+26.02 PRIOR TO CONSTRUCTION OF THIS SECTION

PC. 10344 PAGE 3

NO L.A. CO. CHARGE FOR CONNECTIONS  
SEE COUNTY SAN DISTRICTS FOR SPECIAL CHARGES  
DOUBLE VERTICAL SCALE

51493



PC. 10344 PAGE 4

NO L.A. CO. CHARGE FOR CONNECTIONS  
SEE COUNTY SAN DISTRICTS FOR SPECIAL CHARGES  
DOUBLE VERTICAL SCALE

CONTRACTOR MUST VERIFY INVERT ELEVATION AT STA. 2+19.00 PRIOR TO CONSTRUCTION OF THIS PAGE

51494

51493  
 PC 10344  
 23124 ON TRACT