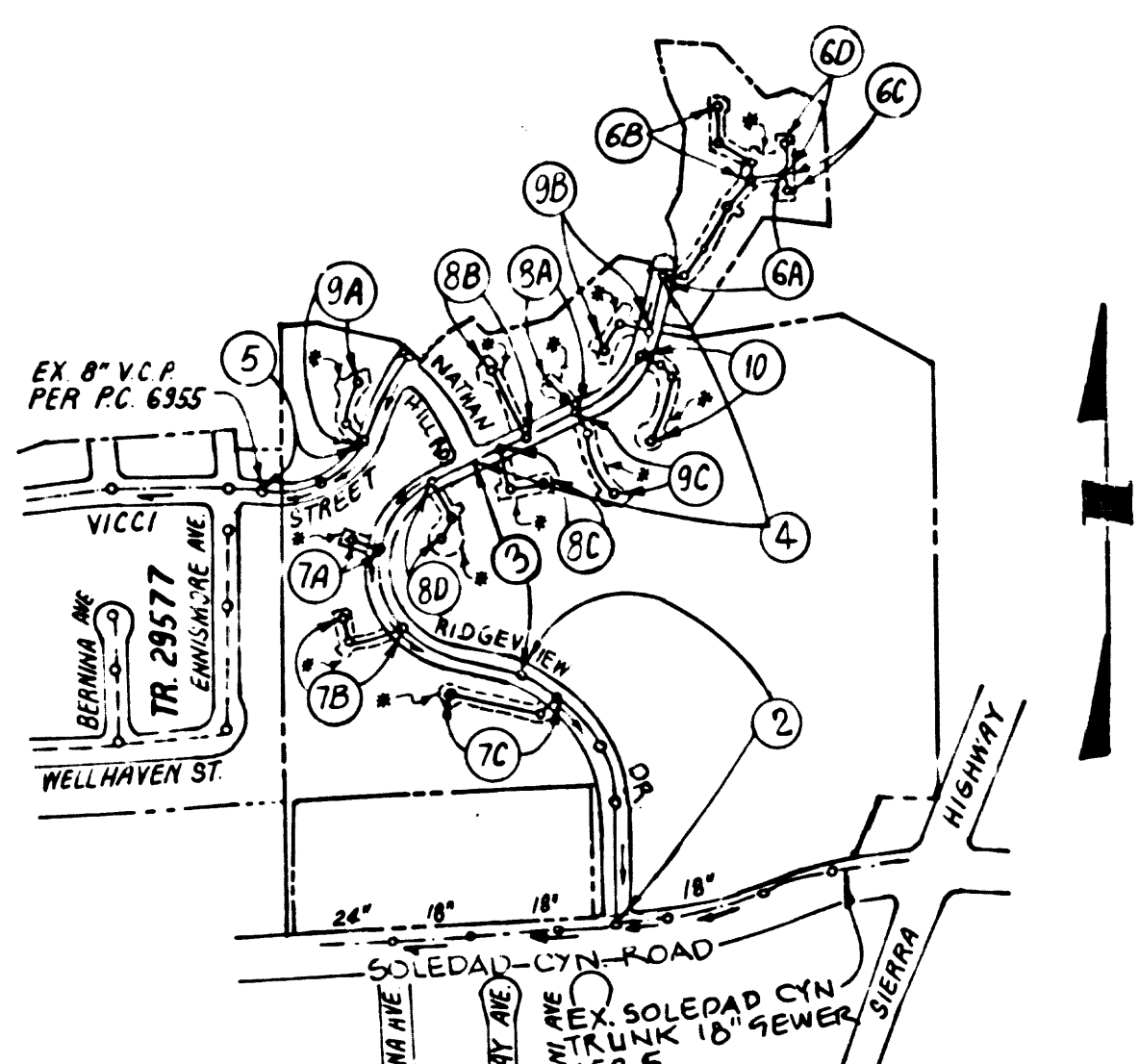


B.M. CL 2991 ELEV. 1409.00  
 ROB.M TAG 7 FT. E. PCR 42 FT. S & 57 FT. E  
 C/L INT. SOLEDAD CYN. RR & VILVA  
 NEWHALL QUAD. 1978.

DOUBLE SCALE

GENERAL NOTES: CONT'D

12. ALL REFERENCES ON THIS PLAN TO THE COUNTY ENGINEER, THE ROAD DEPARTMENT OR THE FLOOD CONTROL DISTRICT SHALL APPLY TO THOSE APPROPRIATE SECTIONS OF THE DEPARTMENT OF PUBLIC WORKS.



INDEX MAP

SCALE: 1"=600'  
 P.C. 10351  
 TRACT NO. 43528

NOTE: NUMBERS IN CIRCLES INDICATE PAGE NUMBERS

REVISION # 2  
 REVISED PAGE 7C PROFILE, GRADE OF STA. 1+02.00 TO STA. 1+38.00 FROM 2.36% TO 0.90% AND STA. 1+42.00 TO STA. 1+43.00 FROM 1.44% TO 1.80%  
 APPROVED: [Signature] DATE: 4-17-86

REVISION # 1  
 VERTICAL CURVE ADDED AT STA. 1+80.00, CHANGED BY FROM 7.12% TO 4.0% AND 2  
 APPROVED: [Signature] DATE: 2/27/80

NO CONNECTION FOR THE DISPOSAL OF INDUSTRIAL WASTES SHALL BE MADE TO SEWERS SHOWN ON THESE DRAWINGS UNTIL A PERMIT FOR INDUSTRIAL WASTEWATER DISCHARGE HAS BEEN ISSUED BY THE SANITATION DISTRICTS FOR SAID CONNECTION.

BEFORE BREAKING INTO OR CONSTRUCTION ON A COUNTY SANITATION DISTRICT SEWER AND PRIOR TO FINAL ACCEPTANCE OF THE PROJECT, SANITATION DISTRICT INSPECTOR SHALL BE NOTIFIED BY PHONE 818-962-8605 SO THAT REQUIRED INSPECTION CAN BE MADE.

GENERAL NOTES:

- ELEVATIONS ARE IN FEET ABOVE U.S.C. & G.S. SEA LEVEL DATUM OF 1929
- NO REVISIONS SHALL BE MADE IN THESE PLANS WITHOUT THE APPROVAL OF THE COUNTY ENGINEER
- NO REPRESENTATIVE OF THE COUNTY ENGINEER WILL SURVEY OR LAY OUT ANY PORTION OF THE WORK
- GRADES TO WHICH THIS IMPROVEMENT IS TO BE CONSTRUCTED ARE SHOWN ON PLANS AND PROFILES. GRADE POINTS FOR TOP OF CURBS, CENTER LINE OF STREETS, OR CENTER LINE OF ALLEYS ARE SHOWN BY CIRCLES ON PROFILES AT ALL POINTS BETWEEN DESIGNATED POINTS THE GRADE SHALL BE ESTABLISHED SO AS TO CONFORM TO A STRAIGHT LINE DRAWN BETWEEN SAID DESIGNATED POINTS
- THE PRIVATE ENGINEER SHALL FURNISH THE COUNTY ENGINEER WITH GRADE SHEETS AND STATIONING FOR ALL HOUSE LATERALS AND 1/2" OR 7/8" BRANCHES AND SHALL PROVIDE STAKES FOR THEM AT THEIR PROPER LOCATIONS WITH STATIONING PLAINLY MARKED ALL HOUSE LATERALS SHALL BE CONSTRUCTED IN A STRAIGHT ALIGNMENT AT RIGHT ANGLES FROM THE MAIN LINE SEWER EXCEPT AS SHOWN ON THE PLANS AND HOUSE LATERALS FROM CHIMNEYS SHALL NOT HAVE AN ANGLE OF LESS THAN 45° WITH THE MAIN LINE SEWER ANY CHANGE IN ALIGNMENT SHALL BE REQUESTED IN WRITING BY THE PRIVATE ENGINEER
- THE PRIVATE ENGINEER SHALL FURNISH THE HOUSE LATERAL DEPTH AT THE PROPERTY LINE BELOW THE TOP OF CURB ELEVATION FOR EACH HOUSE LATERAL ON THE GRADE SHEET
- BEFORE WORK CAN BE STARTED THE CONTRACTOR MUST OBTAIN A PERMIT TO EXCAVATE IN COUNTY STREETS FROM THE L.A. COUNTY ROAD DEPT. DISTRICT OFFICE NO. 5 AND PAY A FEE TO THE COUNTY ENGINEER 500 S. VERMONT AVENUE LOS ANGELES, CA 90005 TO COVER THE COST OF CONSTRUCTION INSPECTION AND RECORD PLANS
- IF WORK IS TO BE DONE IN A STATE HIGHWAY A PERMIT MUST BE OBTAINED FROM THE STATE OF CALIFORNIA DIVISION OF HIGHWAYS, 120 SOUTH SPRING STREET LOS ANGELES, CALIFORNIA
- APPROVAL OF THIS PLAN BY THE COUNTY OF LOS ANGELES DOES NOT CONSTITUTE A REPRESENTATION AS TO THE ACCURACY OF THE LOCATION OF OR THE EXISTENCE OR NON-EXISTENCE OF ANY UNDERGROUND UTILITY PIPE OR STRUCTURE WITHIN THE LIMITS OF THIS PROJECT. THIS NOTE APPLIES TO ALL PAGES
- REFER TO SECTION 71041 OF THE STANDARD SPECIFICATIONS REGARDING SAFETY ORDERS
- PRIOR TO THE ISSUANCE OF THE REQUIRED SEWER CONSTRUCTION PERMIT, THE CONTRACTOR SHALL OBTAIN AND FILE WITH THE COUNTY ENGINEER COPIES OF A PERMIT TO EXCAVATE IN COUNTY STREETS FROM THE LOS ANGELES COUNTY ROAD DEPARTMENT. A PERMIT FOR EXCAVATIONS AND TRENCHES FROM THE STATE OF CALIFORNIA DIVISION OF INDUSTRIAL SAFETY AND A CERTIFICATE OF WORKERS COMPENSATION INSURANCE WITH THE DEPARTMENT OF COUNTY ENGINEER 500 SOUTH VERMONT, RM. 400, LOS ANGELES, CALIFORNIA 90005. MAKE AS TO THE CERTIFICATE HOLDER TO BE NOTIFIED 30 DAYS PRIOR TO CANCELLATION OF POLICY

CONSTRUCTION NOTES:

- WORK SHALL BE CONSTRUCTED ACCORDING TO THE STANDARD SPECIFICATIONS FOR PUBLIC WORKS CONSTRUCTION (1985 EDITION) AND COUNTY ENGINEER SPECIAL PROVISIONS FOR THE CONSTRUCTION OF SANITARY SEWERS DATED SEPT. 21, 1976 AND SHALL BE PROSECUTED ONLY IN THE PRESENCE OF THE COUNTY ENGINEER
- THE CONTRACTOR SHALL NOTIFY THE CONSTRUCTION DIVISION - PUBLIC WORKS BY TELEPHONE (213) 221-2211 AT LEAST TWENTY-FOUR HOURS BEFORE STARTING ANY WORK UNDER THIS CONTRACT
- HOUSE LATERALS TO BE CONSTRUCTED WITH INVERTS AT PROPERTY LINE 6 FEET BELOW CURB GRADE EXCEPT AS NOTED
- WYE OR TEE BRANCHES MAY BE USED FOR CONNECTIONS TO MAINLINE SEWERS EXCEPT AS NOTED
- ALL STRUCTURES SHALL BE EITHER BRICK MANHOLES PER S-3 OR PRECAST CONCRETE MANHOLES PER S-36 EXCEPT AS NOTED
- PROVIDE STAKES ON THE PROPERTY LINE OR PROPERTY LINES PRODUCE 7' AT RIGHT ANGLES TO THE SEWER LINE AT THE CENTER LINE OF EACH MANHOLE
- MANHOLE TOPS IN IMPROVED RIGHTS OF WAY TO BE LEVEL WITH FINISHED GRADE
- VITRIFIED CLAY PIPE JOINTS SHALL BE TYPE 'D' OR 'D' PER STANDARD SPECIFICATIONS SECTION 200-2
- IF A ROCKER POLE IS WITHIN THREE FEET OF THE SEWER THE SEWER SHALL BE ENCASED PER S-23 CASE II TWO FEET ON EACH SIDE FROM THE POINT OF INTERFERENCE
- IF DURING THE COURSE OF CONSTRUCTION IT IS DETERMINED THAT THERE IS LESS THAN FOUR FEET OF COVER OVER THE TOP OF A MAIN LINE OR HOUSE LATERAL SEWER WHICH IS NOT INDICATED ON THE PLANS, THE PIPE SHALL BE ENCASED PER S-23 CASE II UNLESS OTHERWISE APPROVED BY THE COUNTY ENGINEER
- ALL JOINTS BETWEEN CAST IRON PIPE AND VITRIFIED CLAY PIPE SHALL BE MADE WITH A RUBBER SLEEVE JOINT, TYPE 'C' OR 'D' (WITH BUSHING IF NECESSARY) PER STANDARD SPECIFICATIONS, SECTION 200-2
- SEWERS TO BE TESTED FOR LEAKS PER SECTION 200-14 OF THE STANDARD SPECIFICATIONS AND SPECIAL PROVISIONS
- RESURFACE ALL TRENCHES WITHIN PAVED AREAS TO MEET L.A. COUNTY ROAD DEPT. ON CALIFORNIA STATE HIGHWAY REQUIREMENTS IN ACCORDANCE WITH PERMITS
- FULL COMPLIANCE WITH SECTION 200-13.5 OF THE SPECIAL PROVISIONS WILL BE REQUIRED FOR BACKFILL IN STREETS. CERTIFICATION OF BACKFILL COMPACTION AND SAID EQUIVALENTS BY A QUALIFIED REGISTERED TESTING LABORATORY SHALL BE PROVIDED BY THE PERMITTEE PRIOR TO THE ISSUANCE OF A CERTIFICATE OF PARTIAL ACCEPTANCE
- SPECIAL BACKFILL IN EXISTING CONSTRUCTION (A) BACKFILL TRENCH AND REPLACE OTHER EARTH SO AS TO ACHIEVE THE NATURAL OR FINISHED GRADES AND SLOPES SHOWN ON THE GRADING PLAN APPROVED FOR THE DEVELOPMENT BY THE BUILDING AND SAFETY DIVISION (B) ALL BACKFILL AND EARTH REPLACED SHALL BE COMPACTED TO A MINIMUM OF 90% OF MAXIMUM DENSITY PER ASTM D1557 METHOD OR TEST OTHERS IF BE MODIFIED ACCEPTABLE CERTIFICATION OF SUCH COMPACTION SHALL BE SUBMITTED TO THE CONSTRUCTION DIVISION - PUBLIC WORKS

PROFILE, ALIGNMENT AND GRADE OF PAGE 1  
 SANITARY SEWERS  
 TO BE CONSTRUCTED IN  
 TRACT NO. 43528

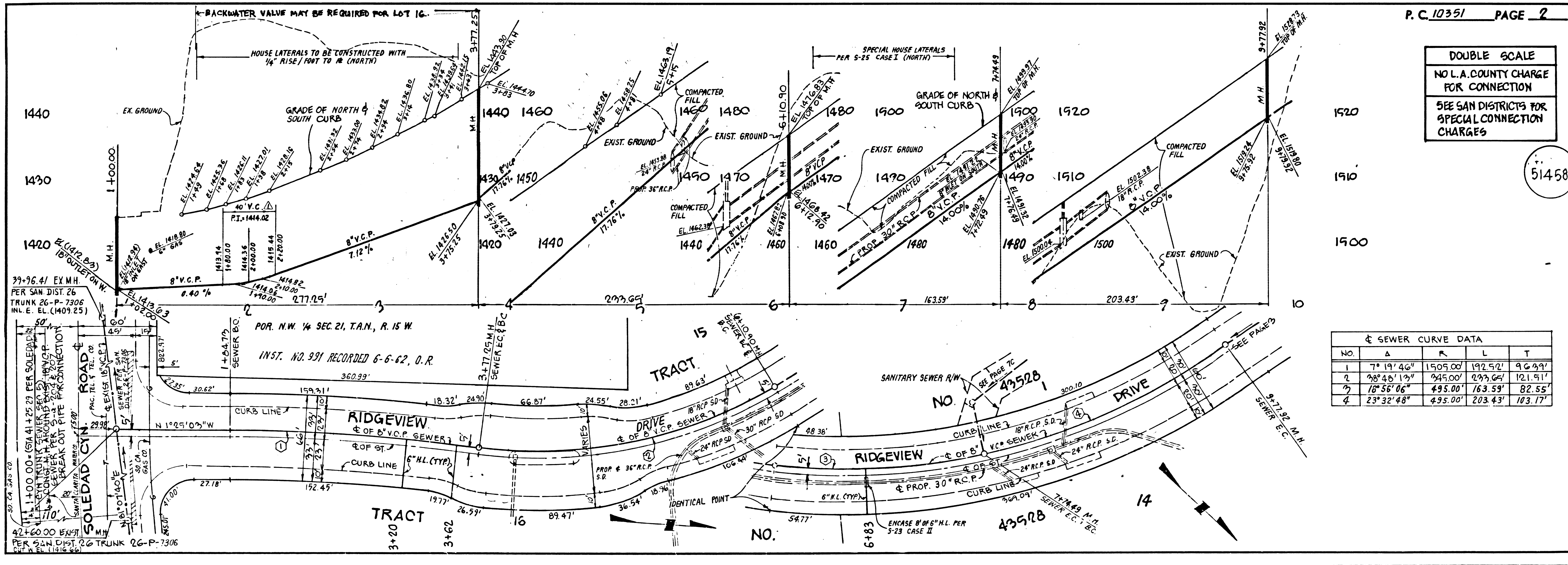
PRIVATE CONTRACT NO. 10351  
 INDEX A-60  
 5 SHEETS, 10 PAGES  
 SCALE: VERT. 1"=8' HORIZ. 1"=40' FEBRUARY, 1985  
 PREPARED IN THE OFFICES OF  
 SIKAND ENGINEERING ASSOCIATES  
 15230 BURBANK BLVD., 14TH FLOOR  
 CALIFORNIA, 91411 (213) 787-8550  
 BY: [Signature] REG. C. E. No. 12288

THE FOLLOWING LATEST REVISED STANDARD PLANS ON FILE IN THE OFFICE OF THE COUNTY ENGINEER SHALL APPLY IN THE CONSTRUCTION OF THIS PROJECT.

|   |       |
|---|-------|
| USDB  | 10    |
| MINIMUM PUBLIC SAFETY ENCLOSURES              | 88    |
| BRICK SEWER MANHOLE                           | 203-0 |
| STANDARD MANHOLE STEP                         | 517   |
| BRIDGING FOR SEWER PIPE                       | 529   |
| CASING AND ENCASUREMENT                       | 538   |
| WYE OF THE SUPPORT                            | 536   |
| ALLOWABLE TRENCH WIDTHS                       | 535   |
| LOADING MANHOLE FRAMES AND COVERS             | 538   |
| NON-BENEFICENT PRECAST CONCRETE SEWER MANHOLE | 200-0 |

IN ADDITION THE FOLLOWING COUNTY SANITATION DISTRICT STANDARDS SHALL APPLY TO THE CONSTRUCTION OF THIS SEWER:  
 STANDARD MANHOLE TYPE D 5-B-204  
 STANDARD 24" MANHOLE FRAME & COVERS 5-B-207

COUNTY OF LOS ANGELES, CALIFORNIA  
 THOMAS A. TIDEMANSON, DIRECTOR OF PUBLIC WORKS  
 CHARLES W. GARRY, CHIEF ENGINEER  
 APPROVED: [Signature] DATE: 2/26/85  
 CHECKED: [Signature] DATE: 2/26/85  
 NO. CE NO. 16841  
 SANTA CLARITA VALLEY BLDG. DIST. 5-2



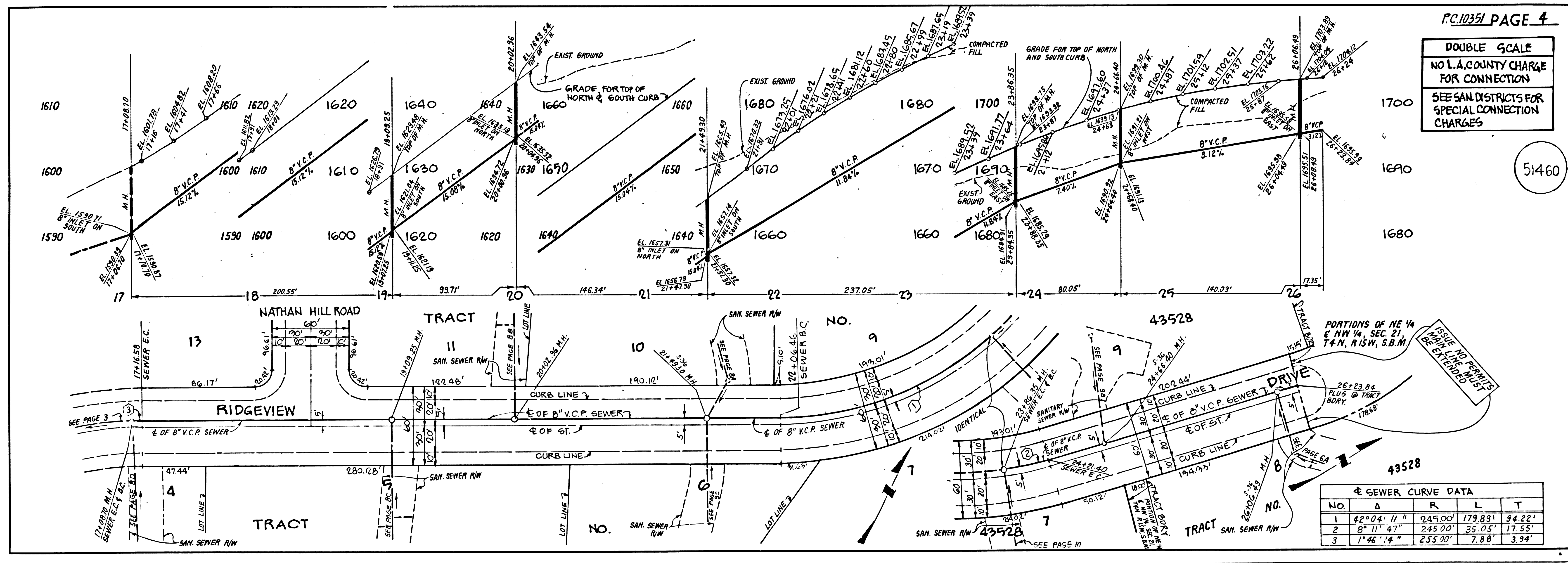
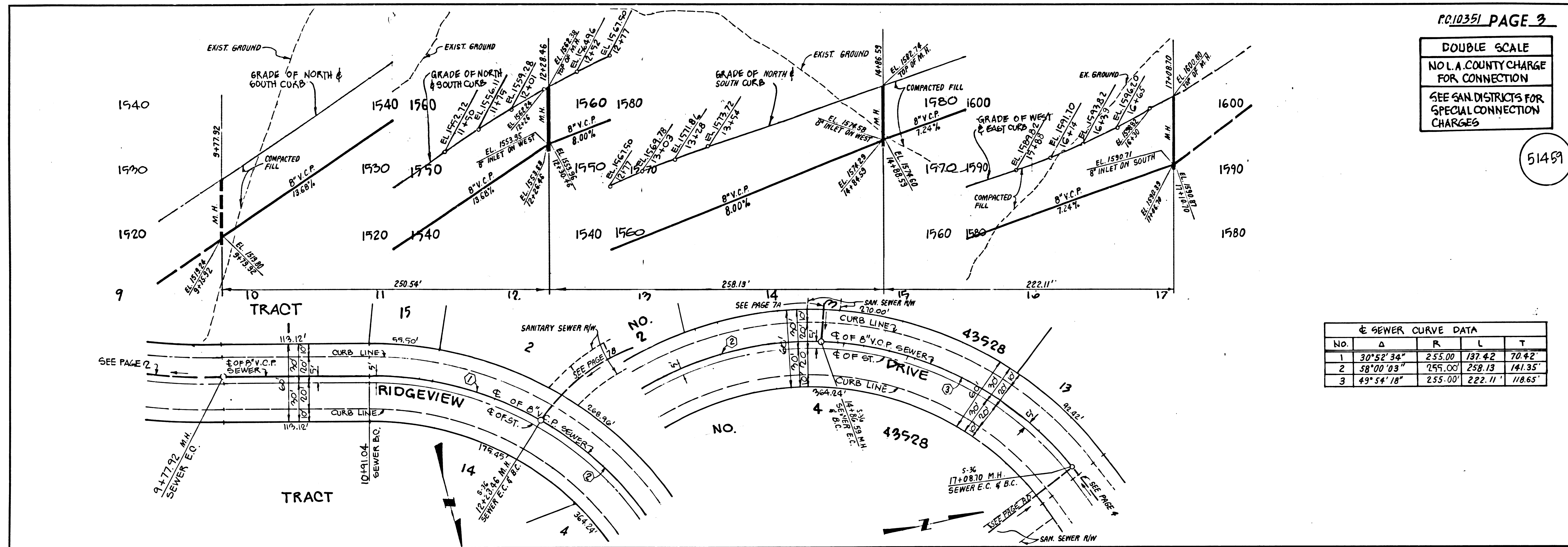
P.C. 10351 PAGE 2

DOUBLE SCALE  
 NO L.A. COUNTY CHARGE FOR CONNECTION  
 SEE SAN DISTRICTS FOR SPECIAL CONNECTION CHARGES

SEWER CURVE DATA

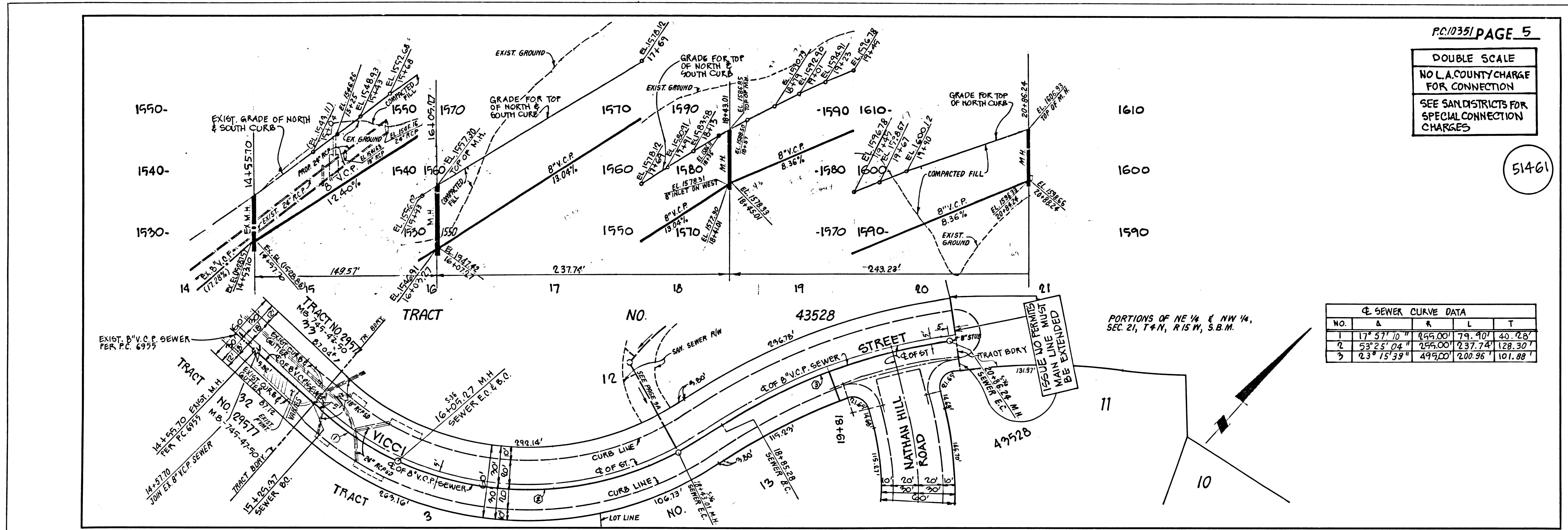
| NO | Δ           | R        | L       | T       |
|----|-------------|----------|---------|---------|
| 1  | 7° 19' 40"  | 1505.00' | 197.50' | 96.99'  |
| 2  | 48° 48' 12" | 945.00'  | 299.64' | 121.51' |
| 3  | 18° 58' 06" | 495.00'  | 163.59' | 82.55'  |
| 4  | 23° 32' 48" | 495.00'  | 203.43' | 103.17' |



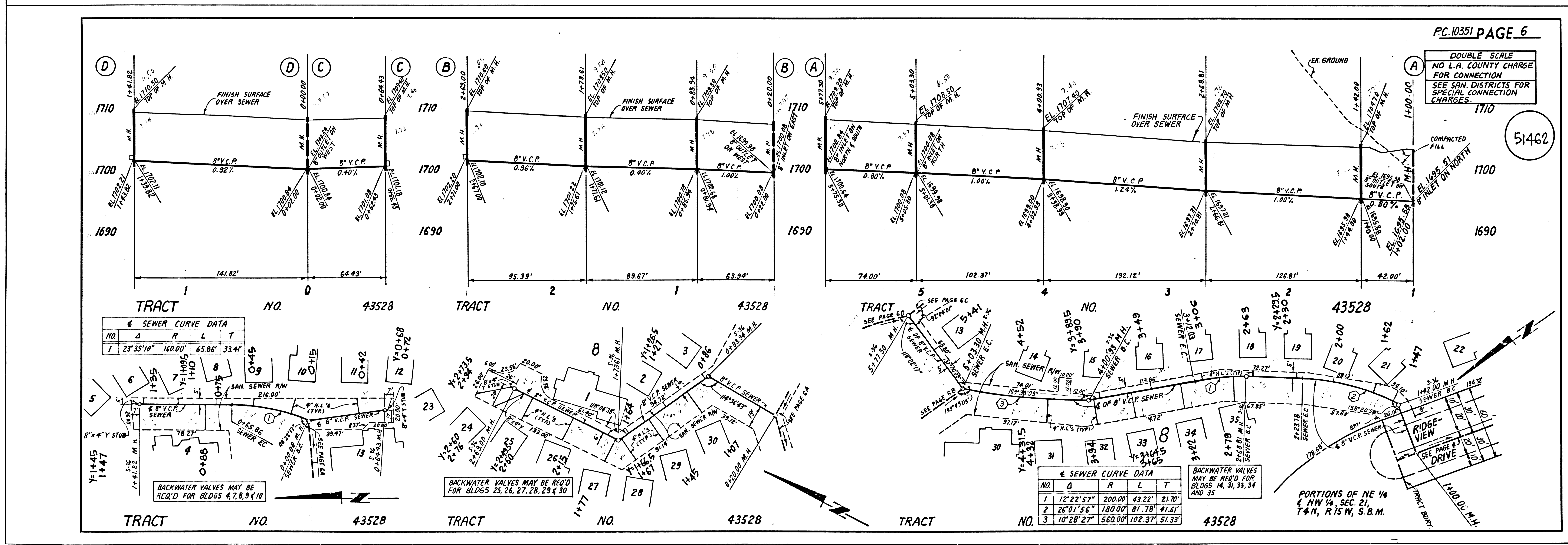


S  
13201 CA  
8534P ON TRACT  
LAWC 10 43258

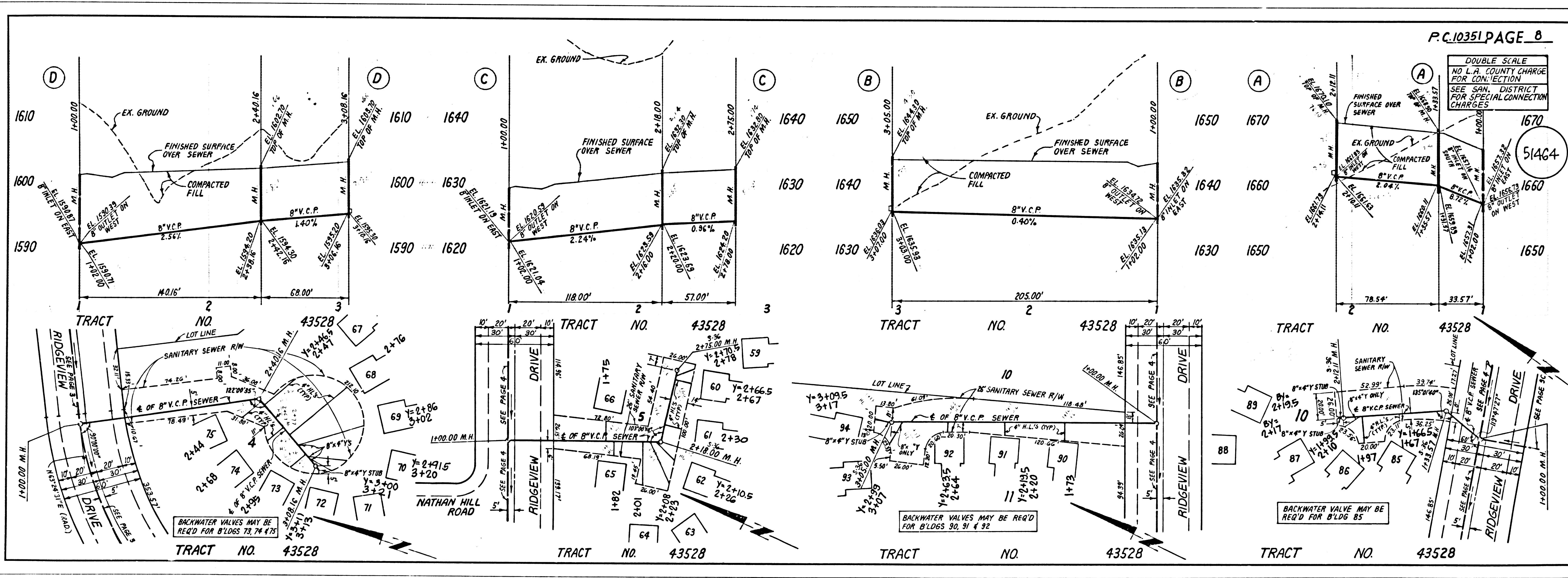
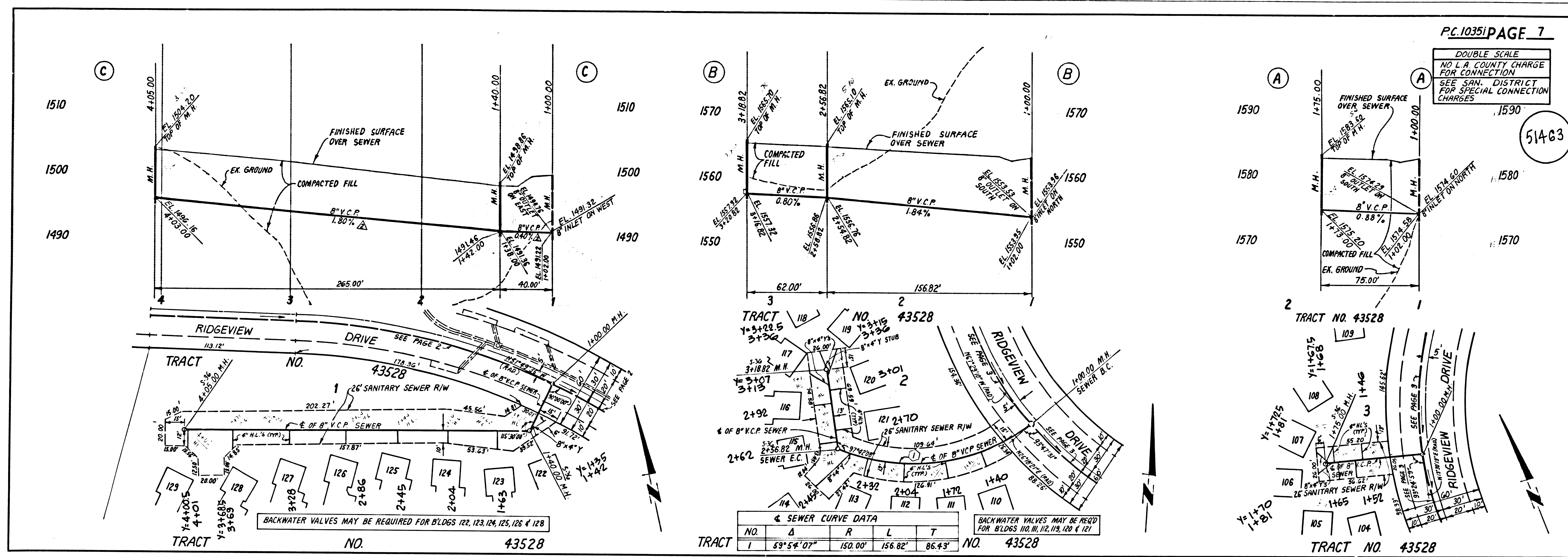




12301 39 85228 ON PART

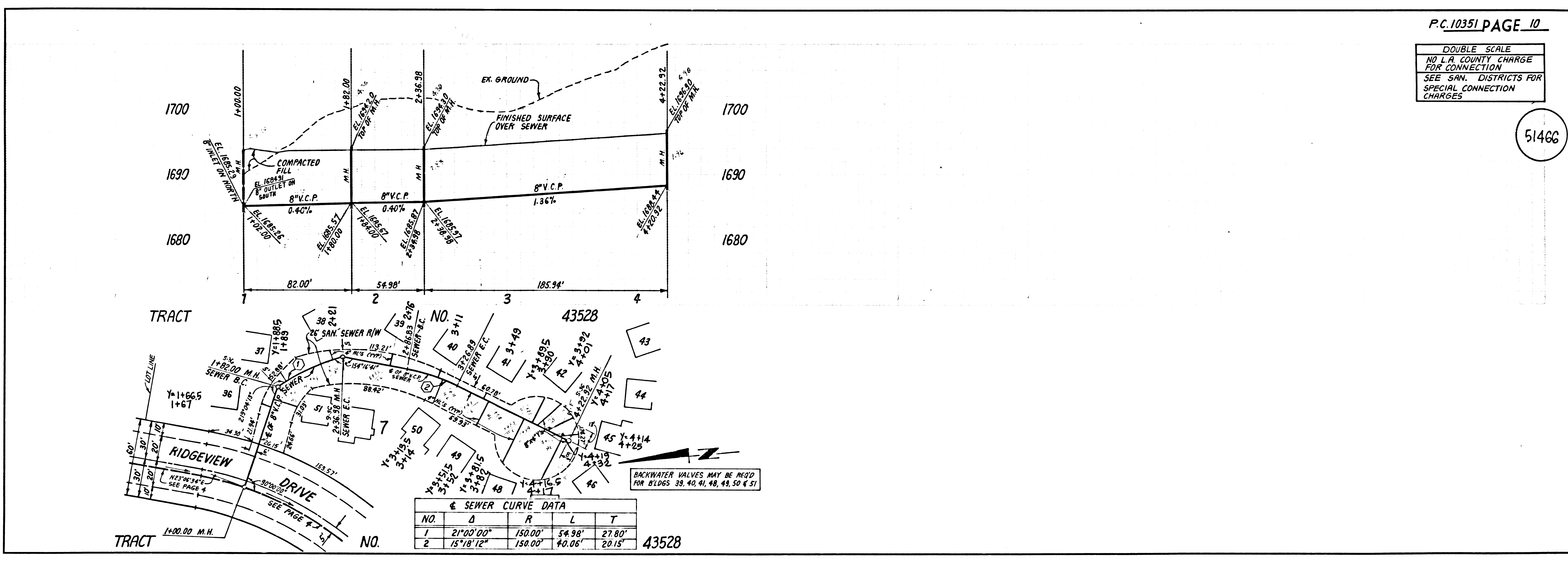
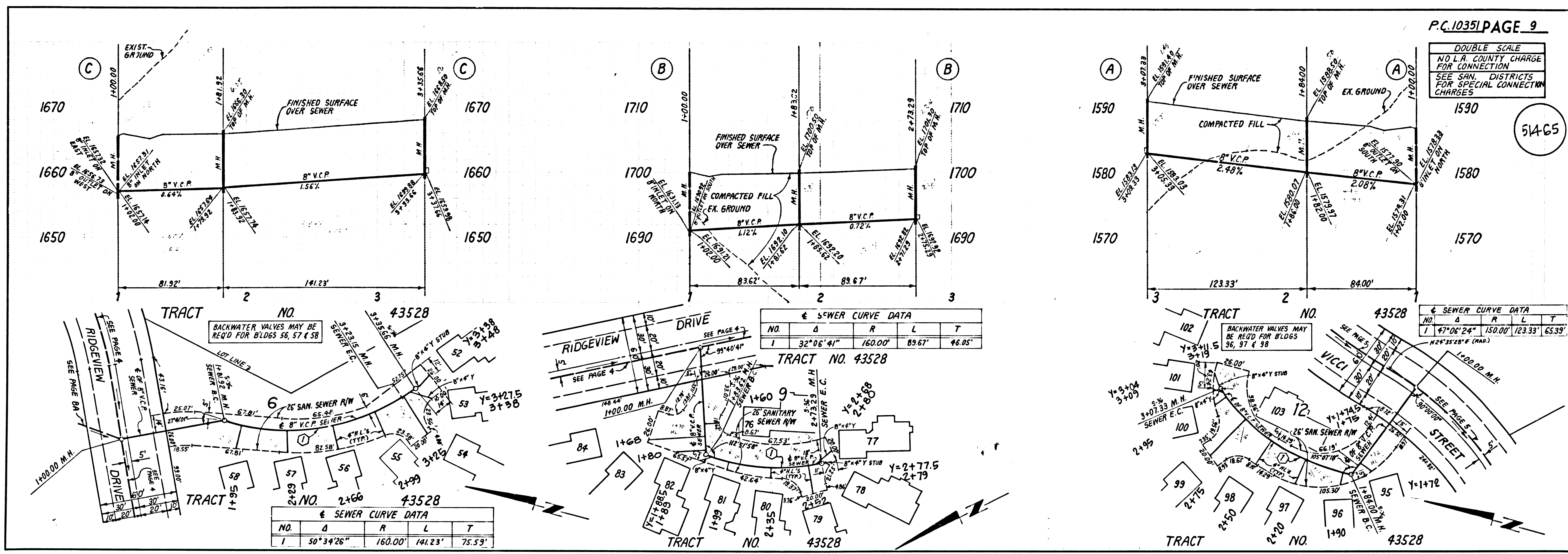






12E01 29 85228 ON TRACT





DOUBLE SCALE  
NO L.A. COUNTY CHARGE FOR CONNECTION  
SEE SAN. DISTRICTS FOR SPECIAL CONNECTION CHARGES

51465

2

TRACT NO. 43528 BC 10321 85358

DOUBLE SCALE  
NO L.A. COUNTY CHARGE FOR CONNECTION  
SEE SAN. DISTRICTS FOR SPECIAL CONNECTION CHARGES

51466