

B.M. CL 3825 ELEV. 1296.147
 LAST 24 IN. IN THE CORNER BASE CITY OF LA
 WEST TOWER 1/4" X 1/4" IN BOUNDARY CIVIL RO
 PLAN N.W. 1/4 Q. SUSAN BETH WAY AND (SAN 804-7 1962)
 NEWHALL QUAD. 19 78

DOUBLE SCALE

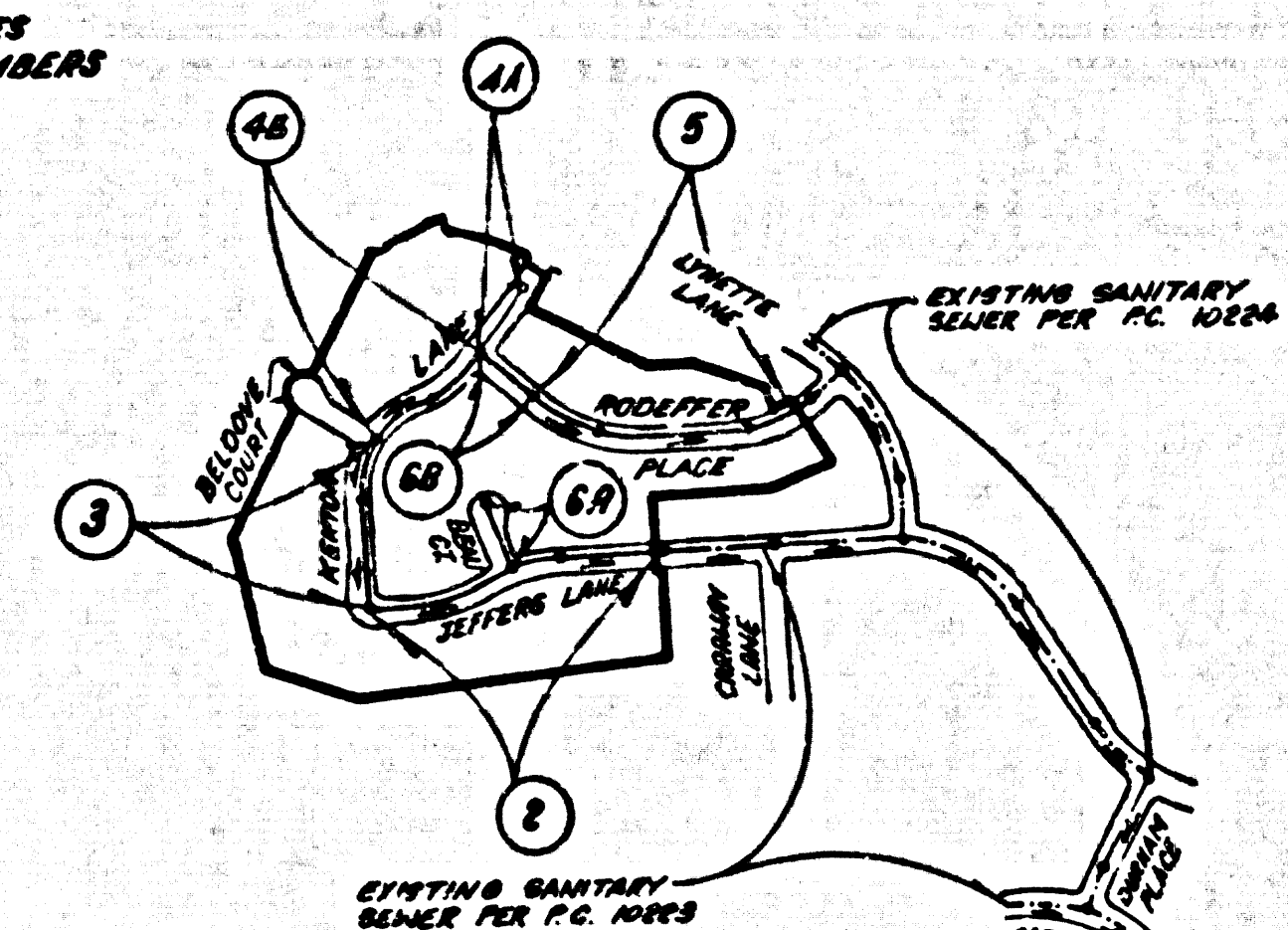
CONSTRUCTION NOTES: (CONT)

- 16. WYE BRANCHES ONLY 45° USED FOR CONNECTIONS TO MAIN LINE SEWER IF A.B.S.C.P. IS USED.
- 17. ALL JOINTS BETWEEN CAST IRON PIPE AND A.B.S.C.P. SHALL BE MADE WITH APPROVED FITTINGS.
- 18. FULL COMPLIANCE WITH PART 14 OF THE SPECIAL PROVISIONS IS REQUIRED FOR THE INSTALLATION OF A.B.S. COMPOSITE PIPE AND A.B.S. SOLID WALL HOUSE LATERALS.
- 19. MANHOLE WATER STOP BASKETS AND CLEANING ARE REQUIRED FOR THE CONNECTION OF A.B.S. COMPOSITE PIPE TO MANHOLE STRUCTURES.
- 20. A.B.S. SOLID WALL PIPE MUST BE USED FOR WYE AND HOUSE LATERAL CONNECTIONS TO A.B.S. COMPOSITE MAINLINE SEWER PIPE.
- 21. 3 DEGREE DEFLECTION COUPLERS SHALL BE USED TO ACCOMPLISH RADIUS OF CURVATURE LESS THAN 300'.
- 22. A.B.S. COMPOSITE PIPE SHALL BE BODDED IN CONFORMANCE WITH THE TABLE IN SECTION B-51 OF PART 14 OF SPECIAL PROVISIONS.

NO CONNECTION FOR THE DISPOSAL OF INDUSTRIAL WASTES SHALL BE MADE TO SEWERS SHOWN ON THESE DRAWINGS UNTIL A PERMIT FOR INDUSTRIAL WASTEWATER DISCHARGE HAS BEEN ISSUED BY THE SANITATION DISTRICTS FOR SAID CONNECTION.

BEFORE BREAKING INTO OR CONSTRUCTION ON A COUNTY SANITATION DISTRICT SEWER AND PRIOR TO FINAL ACCEPTANCE OF THE PROJECT, SANITATION DISTRICT INSPECTOR SHALL BE NOTIFIED BY PHONE 818 - 962-8605 SO THAT REQUIRED INSPECTION CAN BE MADE.

NOTE:
 NUMBERS IN CIRCLES
 INDICATE PAGE NUMBERS



INDEX MAP
 TRACT NO 33291
 PC# 10353
 Scale: 1" = 600'

REVISION NO. 1 DATE: 12-1-66

DELETE SEWER LINE FOR BELDOVE COURT, SHEET 3(A)

APPROVED *Sally G. Ball*
 OFFICE OF COUNTY ENGINEER

ALLOW NO HOUSE CONNECTION UNTIL OUTLET S.C. 10223 AND P.C. 10353 ARE ACCEPTED FOR PUBLIC USE.

GENERAL NOTES:

- 1. ELEVATIONS ARE IN FEET ABOVE U.S.C. & G.S. SEA LEVEL DATUM OF 1929.
- 2. NO REVISIONS SHALL BE MADE IN THESE PLANS WITHOUT THE APPROVAL OF THE DIRECTOR OF PUBLIC WORKS.
- 3. NO REPRESENTATIVE OF THE COUNTY ENGINEER WILL SURVEY OR LAY OUT ANY PORTION OF THE WORK.
- 4. GRADES TO WHICH THIS IMPROVEMENT IS TO BE CONSTRUCTED ARE SHOWN ON PLANS AND SHOULD BE OBTAINED FROM THE CHIEF ENGINEER'S OFFICE. CENTER LINE OF STREETS OR CENTER LINE OF ALLEYS AND PROPERTY LINES SHALL BE SHOWN ON PLANS AT ALL POINTS OF INTEREST. POINTS TO WHICH THE GRADE SHALL BE ADJUSTED SHALL BE TO CONFORM TO A STRAIGHT LINE DRAWN BETWEEN SAID DESIGNATED POINTS.
- 5. THE PRIVATE ENGINEER SHALL FURNISH THE BEST AVAILABLE ELEVATION SHEETS AND STATISTICAL INFORMATION FOR ALL LOTS AND 1" ON 1" GRADES AND SHALL PROVIDE STAKE-OUT FOR THEM AT THEIR PROPER LOCATIONS WITH STATIONING PLAINLY MARKED. ALL HOUSE LATERALS SHALL BE CONSTRUCTED AS A STRAIGHT ALIGNMENT AT RIGHT ANGLES FROM THE MAIN LINE SEWER. EXCEPT AS SHOWN ON THE PLANS, HOUSE LATERALS SHALL NOT HAVE AN INCLINE OF LESS THAN 1" WITH THE MAIN LINE SEWER. ANY CHANGE IN ALIGNMENT SHALL BE REQUESTED IN WRITING BY THE PRIVATE ENGINEER.
- 6. THE PRIVATE ENGINEER SHALL FURNISH THE HOUSE LATERAL DEPTH AT THE PROPERTY LINE BELOW THE TOP OF CURB ELEVATION FOR EACH HOUSE LATERAL ON THE GRADE SHEET.
- 7. TRENCHES WHICH CAN BE STARTED THE CONTRACTOR MUST OBTAIN A PERMIT TO EXCAVATE IN COUNTY STREETS FROM THE DEPT. OF PUBLIC WORKS. THE PERMIT MUST BE OBTAINED FROM THE CHIEF ENGINEER'S OFFICE. A PERMIT TO EXCAVATE IN COUNTY STREETS FROM THE DEPT. OF PUBLIC WORKS MUST BE OBTAINED FROM THE CHIEF ENGINEER'S OFFICE. A PERMIT TO EXCAVATE IN COUNTY STREETS FROM THE DEPT. OF PUBLIC WORKS MUST BE OBTAINED FROM THE CHIEF ENGINEER'S OFFICE.
- 8. APPROVAL OF THIS PLAN BY THE COUNTY ENGINEER DOES NOT CONSTITUTE A REPRESENTATION AS TO THE ACCURACY OF THE LOCATION OF THE EXISTENCE OR NON-EXISTENCE OF ANY UNDERGROUND UTILITY PIPE OR STRUCTURE WITHIN THE LIMITS OF THIS PROJECT. THIS NOTE APPLIES TO ALL PAGES.
- 9. REFER TO SECTION 7.16.1 OF THE STANDARD SPECIFICATIONS REGARDING SAFETY PRECAUTIONS.
- 10. PRIOR TO THE COMMENCEMENT OF THE REQUIRED SEWER CONSTRUCTION PERMIT, THE CONTRACTOR SHALL OBTAIN AND FILE WITH THE DEPT. OF PUBLIC WORKS A PERMIT TO EXCAVATE IN COUNTY STREETS FROM THE DEPT. OF PUBLIC WORKS. THE PERMIT MUST BE OBTAINED FROM THE CHIEF ENGINEER'S OFFICE. A PERMIT TO EXCAVATE IN COUNTY STREETS FROM THE DEPT. OF PUBLIC WORKS MUST BE OBTAINED FROM THE CHIEF ENGINEER'S OFFICE.
- 11. HOUSE LATERALS TO BE CONSTRUCTED WITHIN THE CITY OF LOS ANGELES SHALL BE CONSTRUCTED IN ACCORDANCE WITH THE STANDARD SPECIFICATIONS FOR PUBLIC WORKS CONSTRUCTION (SPECIAL PROVISIONS) FOR THE CONSTRUCTION OF SANITARY SEWERS (PART 14) AND SHALL BE CONSTRUCTED ONLY IN THE PRESENCE OF THE SUPERVISOR OF PUBLIC WORKS.
- 12. THE CONTRACTOR SHALL NOTIFY THE CONSTRUCTION DIVISION BY TELEPHONE (213-221-2100) AT LEAST TWENTY-FOUR HOURS BEFORE STARTING ANY WORK.
- 13. HOUSE LATERALS TO BE CONSTRUCTED WITHIN THE CITY OF LOS ANGELES SHALL BE CONSTRUCTED IN ACCORDANCE WITH THE STANDARD SPECIFICATIONS FOR PUBLIC WORKS CONSTRUCTION (SPECIAL PROVISIONS) FOR THE CONSTRUCTION OF SANITARY SEWERS (PART 14) AND SHALL BE CONSTRUCTED ONLY IN THE PRESENCE OF THE SUPERVISOR OF PUBLIC WORKS.
- 14. WYE OR TEE BRANCHES MAY BE USED FOR CONNECTIONS TO MAINLINE SEWERS EXCEPT AS NOTED.
- 15. ALL STRUCTURES SHALL BE EITHER BRICK MANHOLES PER S-2 OR PRECAST CONCRETE MANHOLES PER S-3, EXCEPT AS NOTED.
- 16. 2" WIDE STAKES ON THE PROPERTY LINE OR PROPERTY LINE PRODUCED AT RIGHT ANGLES TO THE SEWER LINE AT THE CENTER LINE OF EACH MANHOLE.
- 17. MANHOLE TOPS IN UNIMPROVED AREAS OF WAY TO BE SIX INCHES ABOVE FINISHED GRADE.
- 18. VITRIFIED CLAY PIPE JOINTS SHALL BE TYPE "D" OR "E" PER STANDARD SPECIFICATIONS SECTION 200-2.
- 19. IF A POWER POLE WITHIN THREE FEET OF THE SEWER, THE SEWER SHALL BE ENCASED, PER S-2, CASE II, TWO FEET ON EACH SIDE FROM THE POINT OF INTERFERENCE.
- 20. IF DURING THE COURSE OF CONSTRUCTION IT IS DETERMINED THAT THERE IS LESS THAN FOUR FEET OF COVER OVER THE TOP OF A MAIN LINE OR HOUSE LATERAL SEWER WHICH IS NOT INDICATED ON THE PLANS, THE PIPE SHALL BE ENCASED PER S-2, CASE II, UNLESS OTHERWISE APPROVED BY THE DIRECTOR OF PUBLIC WORKS.
- 21. ALL JOINTS BETWEEN CAST IRON PIPE AND VITRIFIED CLAY PIPE SHALL BE MADE WITH A RUBBER SLEEVE JOINT, TYPE "D" OR "E" WITH BUSHING IF NECESSARY PER STANDARD SPECIFICATIONS, SECTION 200-3.
- 22. SEWERS TO BE TESTED FOR LEAKAGE PER SECTION 200-1.4 OF THE STANDARD SPECIFICATIONS AND SPECIAL PROVISIONS.
- 23. REINFORCE ALL TRENCHES WITHIN PAVED AREAS TO MEET L.A. COUNTY REQUIREMENTS ON CALIFORNIA STATE HIGHWAY REQUIREMENTS IN ACCORDANCE WITH PERMITS.
- 24. FULL COMPLIANCE WITH SECTION 200-1.3 OF THE SPECIAL PROVISIONS WILL BE REQUIRED FOR BACKFILL IN STREETS. CERTIFICATION OF BACKFILL COMPACTION AND SAND EQUIVALENTS BY A QUALIFIED, REGISTERED TESTING LABORATORY SHALL BE OBTAINED BY THE PERMITTEE PRIOR TO THE ISSUANCE OF A CERTIFICATE OF PARTIAL ACCEPTANCE.
- 25. SPECIAL BACKFILL IN EASEMENT CONSTRUCTION: (A) BACKFILL TRENCH AND REPLACE OTHER EARTH SO AS TO ACHIEVE THE NATURAL OR FINISHED GRADES AND SLOPES SHOWN ON THE GRADING PLAN APPROVED FOR THIS DEVELOPMENT BY THE BUILDING AND SAFETY DIVISION; (B) ALL BACKFILL AND EARTH REPLACEMENTS SHALL BE COMPACTED TO A MINIMUM OF 90% OF MAXIMUM DENSITY PER A.S.T.M. METHOD OF TEST BY AS MODIFIED. ACCEPTABLE CERTIFICATION OF SUCH COMPACTION SHALL BE SUBMITTED TO THE CONSTRUCTION DIVISION - PUBLIC WORKS.

CONSTRUCTION NOTES:

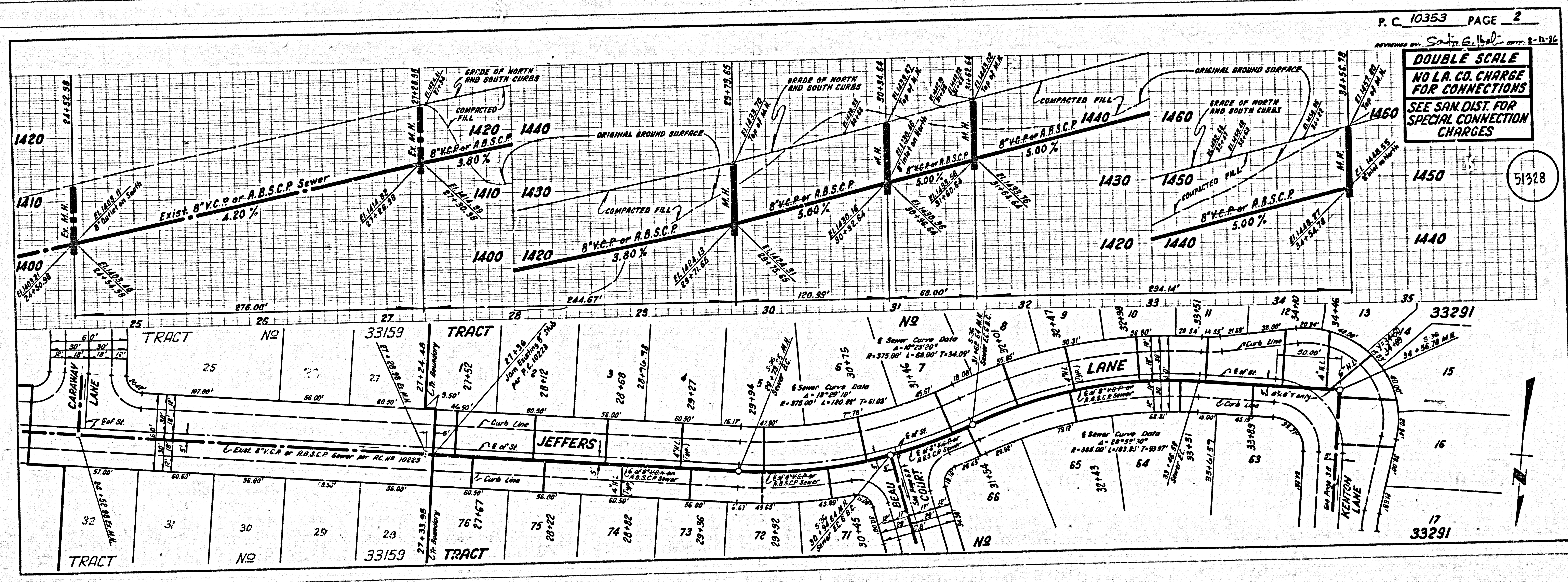
- 1. WORK SHALL BE CONSTRUCTED ACCORDING TO THE STANDARD SPECIFICATIONS FOR PUBLIC WORKS CONSTRUCTION (SPECIAL PROVISIONS) FOR THE CONSTRUCTION OF SANITARY SEWERS (PART 14) AND SHALL BE CONSTRUCTED ONLY IN THE PRESENCE OF THE SUPERVISOR OF PUBLIC WORKS.
- 2. THE CONTRACTOR SHALL NOTIFY THE CONSTRUCTION DIVISION BY TELEPHONE (213-221-2100) AT LEAST TWENTY-FOUR HOURS BEFORE STARTING ANY WORK.
- 3. HOUSE LATERALS TO BE CONSTRUCTED WITHIN THE CITY OF LOS ANGELES SHALL BE CONSTRUCTED IN ACCORDANCE WITH THE STANDARD SPECIFICATIONS FOR PUBLIC WORKS CONSTRUCTION (SPECIAL PROVISIONS) FOR THE CONSTRUCTION OF SANITARY SEWERS (PART 14) AND SHALL BE CONSTRUCTED ONLY IN THE PRESENCE OF THE SUPERVISOR OF PUBLIC WORKS.
- 4. WYE OR TEE BRANCHES MAY BE USED FOR CONNECTIONS TO MAINLINE SEWERS EXCEPT AS NOTED.
- 5. ALL STRUCTURES SHALL BE EITHER BRICK MANHOLES PER S-2 OR PRECAST CONCRETE MANHOLES PER S-3, EXCEPT AS NOTED.
- 6. 2" WIDE STAKES ON THE PROPERTY LINE OR PROPERTY LINE PRODUCED AT RIGHT ANGLES TO THE SEWER LINE AT THE CENTER LINE OF EACH MANHOLE.
- 7. MANHOLE TOPS IN UNIMPROVED AREAS OF WAY TO BE SIX INCHES ABOVE FINISHED GRADE.
- 8. VITRIFIED CLAY PIPE JOINTS SHALL BE TYPE "D" OR "E" PER STANDARD SPECIFICATIONS SECTION 200-2.
- 9. IF A POWER POLE WITHIN THREE FEET OF THE SEWER, THE SEWER SHALL BE ENCASED, PER S-2, CASE II, TWO FEET ON EACH SIDE FROM THE POINT OF INTERFERENCE.
- 10. IF DURING THE COURSE OF CONSTRUCTION IT IS DETERMINED THAT THERE IS LESS THAN FOUR FEET OF COVER OVER THE TOP OF A MAIN LINE OR HOUSE LATERAL SEWER WHICH IS NOT INDICATED ON THE PLANS, THE PIPE SHALL BE ENCASED PER S-2, CASE II, UNLESS OTHERWISE APPROVED BY THE DIRECTOR OF PUBLIC WORKS.
- 11. ALL JOINTS BETWEEN CAST IRON PIPE AND VITRIFIED CLAY PIPE SHALL BE MADE WITH A RUBBER SLEEVE JOINT, TYPE "D" OR "E" WITH BUSHING IF NECESSARY PER STANDARD SPECIFICATIONS, SECTION 200-3.
- 12. SEWERS TO BE TESTED FOR LEAKAGE PER SECTION 200-1.4 OF THE STANDARD SPECIFICATIONS AND SPECIAL PROVISIONS.
- 13. REINFORCE ALL TRENCHES WITHIN PAVED AREAS TO MEET L.A. COUNTY REQUIREMENTS ON CALIFORNIA STATE HIGHWAY REQUIREMENTS IN ACCORDANCE WITH PERMITS.
- 14. FULL COMPLIANCE WITH SECTION 200-1.3 OF THE SPECIAL PROVISIONS WILL BE REQUIRED FOR BACKFILL IN STREETS. CERTIFICATION OF BACKFILL COMPACTION AND SAND EQUIVALENTS BY A QUALIFIED, REGISTERED TESTING LABORATORY SHALL BE OBTAINED BY THE PERMITTEE PRIOR TO THE ISSUANCE OF A CERTIFICATE OF PARTIAL ACCEPTANCE.
- 15. SPECIAL BACKFILL IN EASEMENT CONSTRUCTION: (A) BACKFILL TRENCH AND REPLACE OTHER EARTH SO AS TO ACHIEVE THE NATURAL OR FINISHED GRADES AND SLOPES SHOWN ON THE GRADING PLAN APPROVED FOR THIS DEVELOPMENT BY THE BUILDING AND SAFETY DIVISION; (B) ALL BACKFILL AND EARTH REPLACEMENTS SHALL BE COMPACTED TO A MINIMUM OF 90% OF MAXIMUM DENSITY PER A.S.T.M. METHOD OF TEST BY AS MODIFIED. ACCEPTABLE CERTIFICATION OF SUCH COMPACTION SHALL BE SUBMITTED TO THE CONSTRUCTION DIVISION - PUBLIC WORKS.

W.S. 62
 3 SHEETS, 6 PAGES
 51327
 SCALE: VERT. 1" = 4'
 HORIZ. 1" = 40'
 FEBRUARY 1965
 PREPARED IN THE OFFICES OF
ENGINEERING SERVICE CORPORATION
 2011 W. 10TH ST., LOS ANGELES, CALIF. 90057
 REG. C. E. No. 13095

THE FOLLOWING LATEST REVISION STANDARD PLANS ON FILE IN THE OFFICE OF THE COUNTY ENGINEER SHALL APPLY IN THE CONSTRUCTION OF THIS PROJECT:

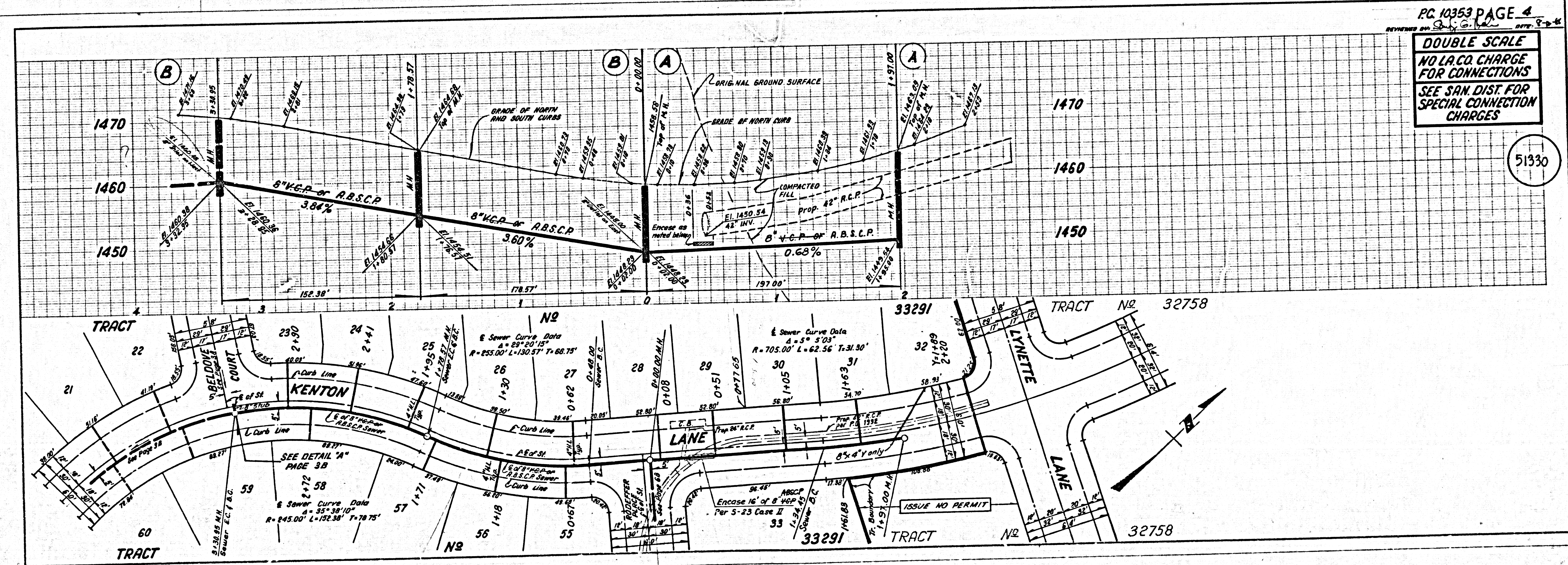
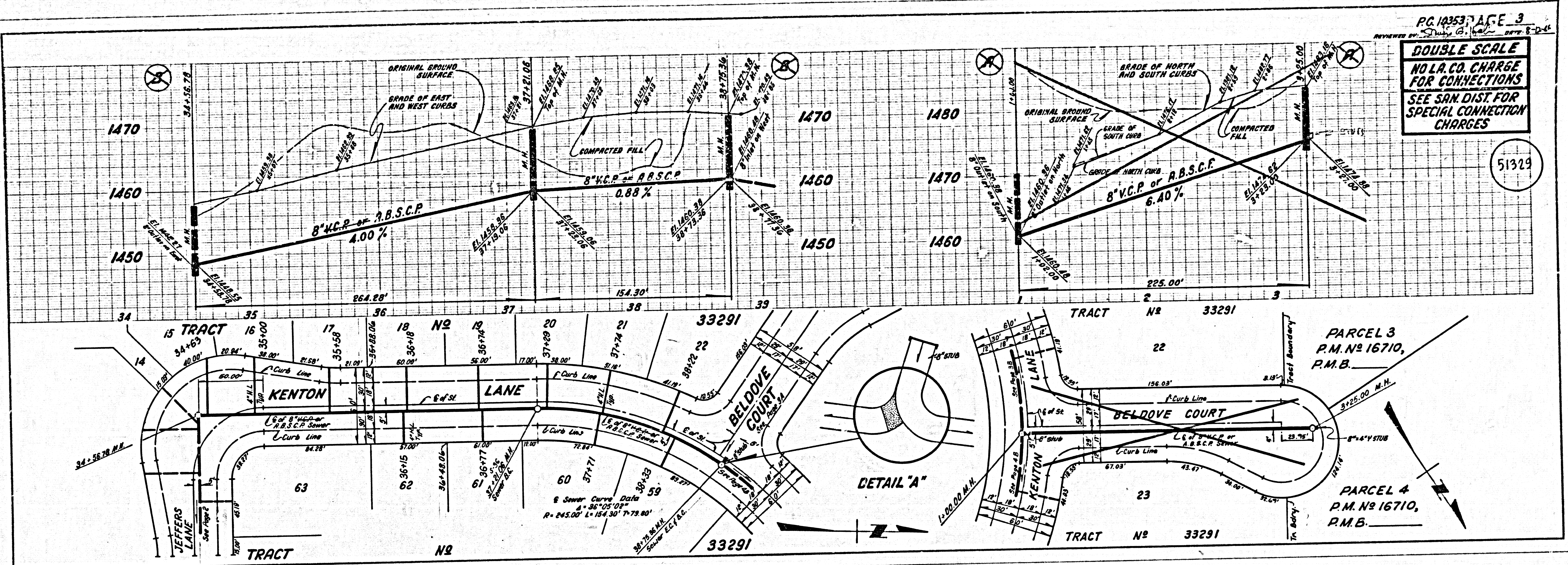
MINIMUM PUBLIC SAFETY REQUIREMENTS	1-1
BRICK MANHOLE	2-2
STANDARD MANHOLE STOP	2-3
BRICKING FOR SEWER PIPE	2-4
CRACKING AND ENCASING	2-5
WYE OR TEE SUPPORT	2-6
ALLOWABLE TRENCH WIDTHS	2-7
LOCKING MANHOLE FRAME AND COVER	2-8
HOUSE LATERALS PER S-2 PRECAST CONCRETE MANHOLE	2-9
SEWER REQUIREMENTS PER PLATE S-2	2-10

COUNTY OF LOS ANGELES, CALIFORNIA
 THOMAS A. TIDEMANSON, DIRECTOR OF PUBLIC WORKS
 CHARLES W. CARRY, CHIEF ENGINEER
 APPROVED *Thomas Tidemanson* 1/12/66
 APPROVED *Charles W. Carry* 1/14/66
 CHECKED *Sally G. Ball* 1/12/66
 REG. C. E. NO. 12847
 SANTA CLARITA VALLEY BLDG. DIST. 82



DOUBLE SCALE
 NO L.A. CO. CHARGE FOR CONNECTIONS
 SEE SAN. DIST. FOR SPECIAL CONNECTION CHARGES

51328



5
 32801 ON 29 18552 ON TRACT

