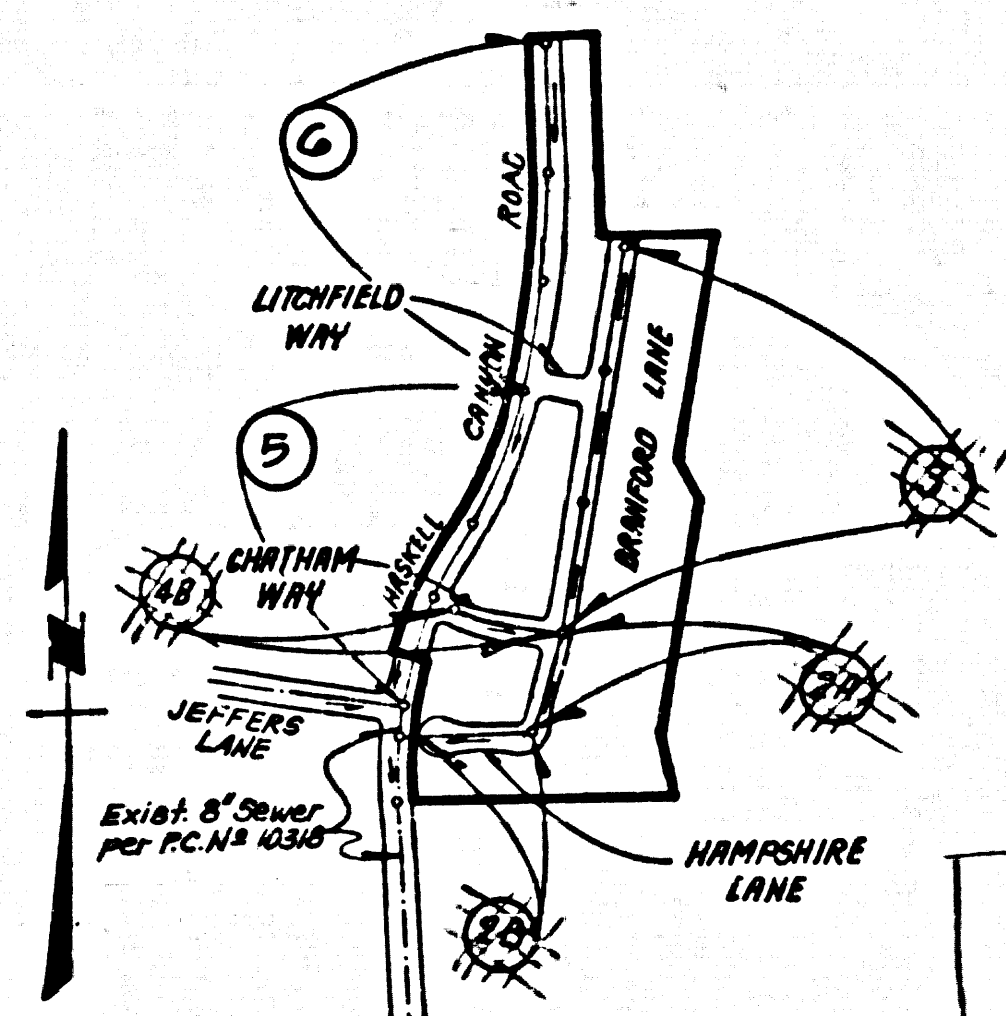


B.M. CL 3825 ELEV. 1296.147
 LACS 8M MIN IN NE COR CONC BASE CITY OF LA W&P
 TOWER #124/6 150 FT W BOURQUET CANYON RD. 4
 0.1MI NW 1/4 QLSUSAN BETH WAY MND (ON 204-7-1962)
 NEWHALL QUAD. 19 78

NOTE:
 NUMBERS IN CIRCLES
 INDICATE PAGE NUMBERS



REVISION NO. 1
 PG. 4 DELETED SECTION 4A
 PG. 5 REVISED PLAN & PROFILE
 PG. 6 ADDED PLAN & PROFILE
 APPROVED: *Sam G. Balli* 10-8-87
 DEPT. OF PUBLIC WORKS DATE

PGS 5 & 6
 100% COMPLETED
 3-25-88

DOUBLE SCALE

CONSTRUCTION NOTES: (CONT.)

16. WYE BRANCHES ONLY MAY BE USED FOR CONNECTIONS TO MAIN LINE SEWER IF A.B.S.C.P. IS USED.
17. ALL JOINTS BETWEEN CAST IRON PIPE AND A.B.S.C.P. SHALL BE MADE WITH APPROVED FITTINGS.
18. FULL COMPLIANCE WITH PART IX OF THE SPECIAL PROVISIONS IS REQUIRED FOR THE INSTALLATION OF A.B.S. COMPOSITE PIPE AND A.B.S. SOLID WALL HOUSE LATERAL.
19. MANHOLE WATER STOP GASKETS AND CLAMPS ARE REQUIRED FOR THE CONNECTION OF A.B.S. COMPOSITE PIPE TO MANHOLE STRUCTURES.
20. A.B.S. SOLID WALL PIPE MUST BE USED FOR WYE AND HOUSE LATERAL CONNECTIONS TO A.B.S. COMPOSITE MANHOLE SEWER PIPE.
21. 3 DEGREE DEFLECTION COUPLERS SHALL BE USED TO ACCOMPLISH RADIUS OF CURVATURE LESS THAN 300'.
22. A.B.S. COMPOSITE PIPE SHALL BE BEDDED IN CONFORMANCE WITH THE TABLE IN SECTION 8-51 OF PART IX OF SPECIAL PROVISIONS.

NO CONNECTION FOR THE DISPOSAL OF INDUSTRIAL WASTES SHALL BE MADE TO SEWERS SHOWN ON THESE DRAWINGS UNTIL A PERMIT FOR INDUSTRIAL WASTEWATER DISCHARGE HAS BEEN ISSUED BY THE SANITATION DISTRICTS FOR SAID CONNECTION.

BEFORE BREAKING INTO OR CONSTRUCTION ON A COUNTY SANITATION DISTRICT SEWER AND PRIOR TO FINAL ACCEPTANCE OF THE PROJECT, SANITATION DISTRICT INSPECTOR SHALL BE NOTIFIED BY PHONE (818) 962-8605 SO THAT REQUIRED INSPECTION CAN BE MADE.

LOTS 71-76 & 78-83 ARE NON-BUILDABLE AND ARE NOT SERVED WITH HOUSE LATERAL CONNECTIONS.

ISSUE NO HOUSE CONNECTION PERMITS UNTIL OUTLET SEWER P.C. 10318 IS ACCEPTED FOR PUBLIC USE BY THE COUNTY OF LOS ANGELES.

GENERAL NOTES:

1. ELEVATIONS ARE IN FEET ABOVE U.S.C. & G.S. SEA LEVEL DATUM OF 1929.
2. NO REVISIONS SHALL BE MADE IN THESE PLANS WITHOUT THE APPROVAL OF THE DIRECTOR OF PUBLIC WORKS.
3. NO REPRESENTATIVE OF THE DEPT. OF PUBLIC WORKS WILL SURVEY OR LAY OUT ANY PORTION OF THE WORK.
4. GRABETS TO WHICH THIS IMPROVEMENT IS TO BE CONSTRUCTED ARE SHOWN ON PLANS AND PROFILES GRADE POINTS OR TOP OF CURBS CENTER LINE OF STREETS OR CENTER LINE OF ALLEYS ARE SHOWN BY CIRCLES ON PROFILES. AT ALL POINTS BETWEEN DESIGNATED POINTS THE GRADE SHALL BE ESTABLISHED SO AS TO CONFORM TO A STRAIGHT LINE DRAWN BETWEEN SAID DESIGNATED POINTS.
5. THE PRIVATE ENGINEER SHALL FURNISH THE DEPT. OF PUBLIC WORKS WITH GRADE SHEETS AND STATIONING FOR ALL HOUSE LATERALS AND WYE OR TEE BRANCHES AND SHALL PROVIDE STAKES FOR THEM AT THEIR PROPER LOCATIONS WITH STATING PLAIN MARKED. ALL HOUSE LATERALS SHALL BE CONSTRUCTED IN A STRAIGHT ALIGNMENT AT RIGHT ANGLES TO THE MAIN LINE SEWER EXCEPT AS SHOWN ON THE PLANS. HOUSE LATERALS FROM CHIMNEYS SHALL NOT HAVE AN ANGLE OF LESS THAN 45° WITH THE MAIN LINE SEWER. ANY CHANGE IN ALIGNMENT SHALL BE REQUESTED IN WRITING BY THE PRIVATE ENGINEER.
6. THE PRIVATE ENGINEER SHALL FURNISH THE HOUSE LATERAL DEPTH AT THE PROPERTY LINE BELOW THE TOP OF CURB ELEVATION FOR EACH HOUSE LATERAL ON THE GRADE SHEET.
7. BEFORE WORK CAN BE STARTED, THE CONTRACTOR MUST OBTAIN A PERMIT TO EXCAVATE IN COUNTY STREETS FROM THE L.A. COUNTY ENGINEER AND THE DEPT. OF PUBLIC WORKS. PERMIT APPLICATION AND FEE TO THE DIRECTOR OF PUBLIC WORKS, 3350 ALCAZAR STREET, LOS ANGELES, CA 90008. TO OBTAIN THE CHIEF OF CONSTRUCTION INSPECTION AND RECORD PLANS.
8. IF WORK IS TO BE DONE IN A STATE HIGHWAY A PERMIT MUST BE OBTAINED FROM THE STATE OF CALIFORNIA, DIVISION OF HIGHWAYS, 128 SOUTH BRINK STREET, LOS ANGELES, CALIFORNIA.
9. APPROVAL OF THIS PLAN BY THE COUNTY OF LOS ANGELES DOES NOT CONSTITUTE A REPRESENTATION AS TO THE ACCURACY OF THE LOCATION OR THE EXISTENCE OR NON-EXISTENCE OF ANY UNDERGROUND UTILITY PIPE OR STRUCTURE WITHIN THE LIMITS OF THIS PROJECT. THIS NOTE APPLIES TO ALL PAGES.
10. REFER TO SECTION 71041 OF THE STANDARD SPECIFICATIONS REGARDING THE CONTRACTOR SHALL OBTAIN AND FILE WITH THE DEPT. OF PUBLIC WORKS COPIES OF A PERCENT TO BE KEPT IN COUNTY STREETS FROM THE L.A. COUNTY ENGINEER AND THE DEPT. OF PUBLIC WORKS. A PERMIT FOR EXCAVATIONS AND TRENCHES FROM THE STATE OF CALIFORNIA, DIVISION OF INDUSTRIAL SAFETY AND CERTIFICATE OF WORKERS' COMPENSATION INSURANCE WITH THE DEPARTMENT OF PUBLIC WORKS, 3350 ALCAZAR STREET, LOS ANGELES, CALIFORNIA 90008 NAMED AS THE CERTIFICATE HOLDER TO BE NOTIFIED 30 DAYS PRIOR TO CANCELLATION OF POLICY.

CONSTRUCTION NOTES:

1. WORK SHALL BE CONSTRUCTED ACCORDING TO THE STANDARD SPECIFICATIONS FOR PUBLIC WORKS CONSTRUCTION 7105 EDITION WITH 1986 SUPPLEMENTS AND TO THE STANDARD SPECIFICATIONS FOR THE CONSTRUCTION OF SANITARY SEWERS DATED SEPT. 21, 1976.
2. THE CONTRACTOR SHALL NOTIFY THE CONSTRUCTION DIVISION-PUBLIC WORKS BY TELEPHONE (213) 226-8261, AT LEAST TWENTY-FOUR HOURS BEFORE STARTING ANY WORK UNDER THIS CONTRACT.
3. HOUSE LATERALS TO BE CONSTRUCTED WITH INVERTS AT PROPERTY LINE 4 FEET BELOW CURB GRADE EXCEPT AS NOTED.
4. WYE OR TEE BRANCHES MAY BE USED FOR CONNECTIONS TO MAINLINE SEWERS EXCEPT AS NOTED.
5. ALL STRUCTURES SHALL BE EITHER BRICK MANHOLES PER S-30 OR PRECAST CONCRETE MANHOLES PER S-36, EXCEPT AS NOTED.
6. PROVIDE STAKES ON THE PROPERTY LINE OR PROPERTY LINES PRODUCED AT RIGHT ANGLES TO THE SEWER LINE AT THE CENTER LINE OF EACH MANHOLE.
7. MANHOLE TOPS IN UNIMPROVED RIGHTS OF WAY TO BE SIX INCHES ABOVE FINISHED GRADE.
8. VITRIFIED CLAY PIPE JOINTS SHALL BE TYPE "D" OR "E" PER STANDARD SPECIFICATIONS SECTION 200-2.
9. IF A POWER HOLE IS WITHIN THREE FEET OF THE SEWER, THE SEWER SHALL BE ENCASED, PER S-32, CASE II, TWO FEET ON EACH SIDE FROM THE POINT OF INTERFERENCE.
10. IF DURING THE COURSE OF CONSTRUCTION IT IS DETERMINED THAT THERE IS LESS THAN FOUR FEET OF COVER OVER THE TOP OF A MAIN LINE OR HOUSE LATERAL SEWER WITHIN THE LIMITS OF THESE PLANS, THE PIPE SHALL BE ENCASED PER S-32, CASE II UNLESS OTHERWISE APPROVED BY THE DIRECTOR OF PUBLIC WORKS.
11. ALL JOINTS BETWEEN CAST IRON PIPE AND VITRIFIED CLAY PIPE SHALL BE MADE WITH A RUBBER SLEEVE JOINT, TYPE "D" OR "E" (WITH BUSHING IF NECESSARY) PER STANDARD SPECIFICATIONS, SECTION 200-2.
12. SEWERS TO BE TESTED FOR LEAKAGE PER SECTION 306-1.4 OF THE STANDARD SPECIFICATIONS AND SPECIAL PROVISIONS.
13. RESURFACE ALL THE INCHES WITHIN PAVED AREAS TO MEET L.A. COUNTY ROAD DEPT. OR CALIFORNIA STATE HIGHWAY REQUIREMENTS IN ACCORDANCE WITH PERMITS.
14. FULL COMPLIANCE WITH SECTION 306-1.2.4 OF THE STD. SPECIFICATIONS WILL BE REQUIRED FOR BACKFILL IN STREETS. CERTIFICATION OF BACKFILL COMPACTION AND SAND EQUIVALENTS BY A QUALIFIED, REGISTERED TESTING LABORATORY SHALL BE PROVIDED BY THE PERMITTEE PRIOR TO THE ISSUANCE OF A CERTIFICATE OF PARTIAL ACCEPTANCE.
15. SPECIAL BACKFILL EASEMENT CONSTRUCTION: (A) BACKFILL TRENCH AND REPLACE OTHER EARTH SO AS TO ACHIEVE THE NATURAL 1% BACKFILL GRADES AND SLOPES SHOWN ON THE GRADING PLAN APPROVED FOR THIS DEVELOPMENT BY THE LAND DIVISION; (B) ALL BACKFILL AND EARTH REPLACED SHALL BE COMPACTED TO A MINIMUM OF 90% MAXIMUM DENSITY PER A.S.T.M. STD. METHOD OF TEST BY AS MODIFIED. ACCEPTABLE CERTIFICATION OF SUCH COMPACTION SHALL BE SUBMITTED TO THE CONSTRUCTION DIVISION - PUBLIC WORKS.

SANITARY SEWERS

TO BE CONSTRUCTED IN

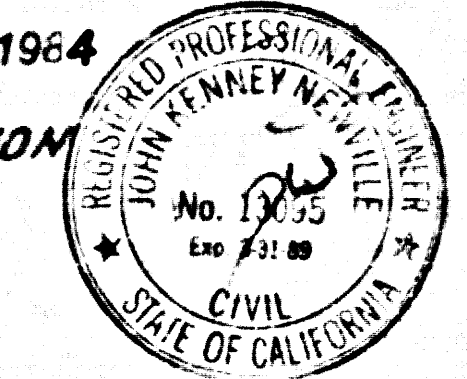
TRACT NO. 43102

PRIVATE CONTRACT NO. 10354

INDEX A-93

3 SHEETS, 6 PAGES

SCALE: HORIZ. 1" = 40'
 VERT. 1" = 4'
 OCT. 1964
 PREPARED IN THE OFFICES OF
ENGINEERING SERVICE CORPORATION
 607 S. W. 10TH ST. SUITE 200 LOS ANGELES, CALIF. 90058
 (213) 417-7559
 BY: *J.R. Hamilton*
 REG. C.E. No. 13055

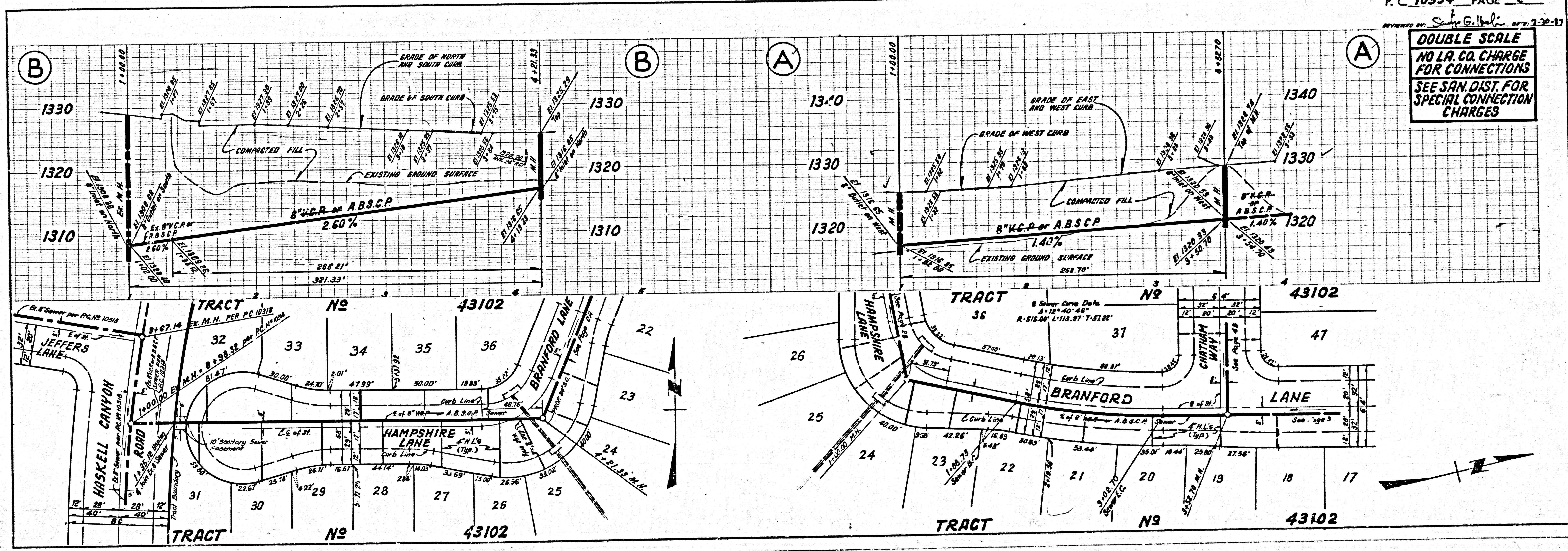


THE FOLLOWING LATEST REVISED STANDARD PLANS ON FILE IN THE OFFICE OF THE DEPT. OF PUBLIC WORKS SHALL APPLY IN THE CONSTRUCTION OF THIS PROJECT.

LEAVING	5.1
MINIMUM PUBLIC SAFETY REQUIREMENTS	5.2
BRICK MANHOLE	5.3
STANDARD MANHOLE STEP	5.17
BEDDING FOR SEWER PIPE	5.21
CEILING AND FLOORING	5.22
WYE OR TEE SUPPORT	5.26
ALLOWABLE TRENCH WIDTHS	5.28
LOCKING MANHOLE FRAME AND COVER	5.29
NON-REINFORCED PRECAST CONCRETE MANHOLE	5.34

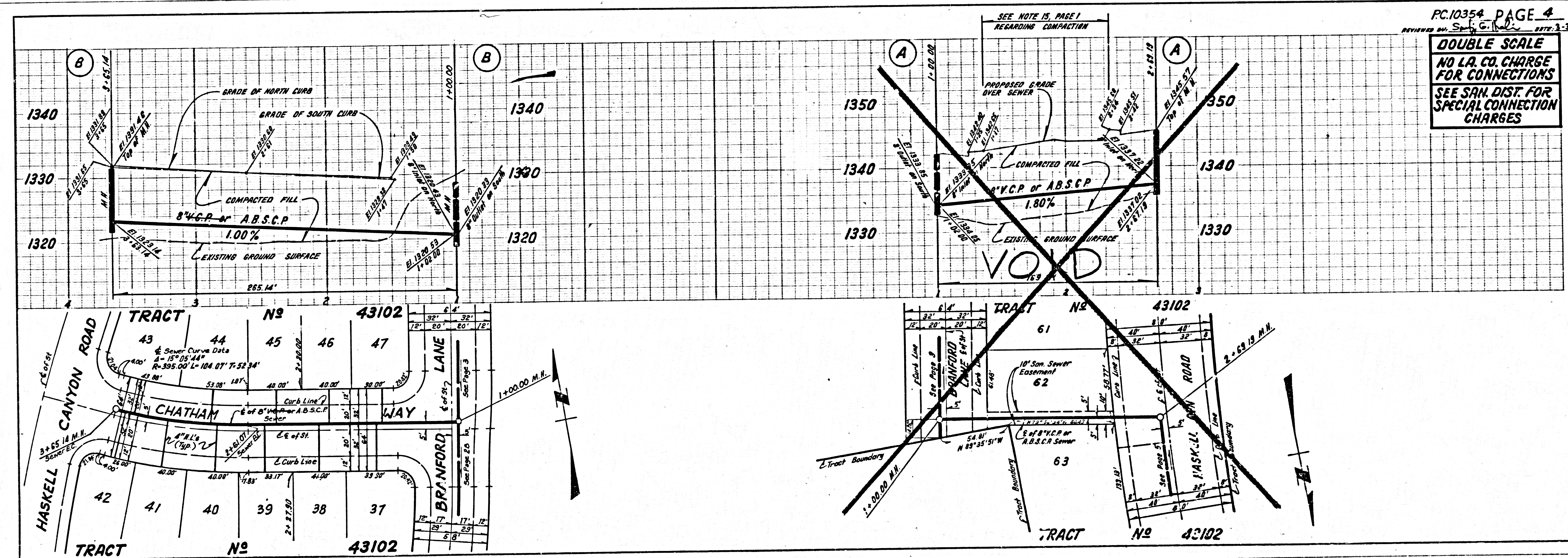
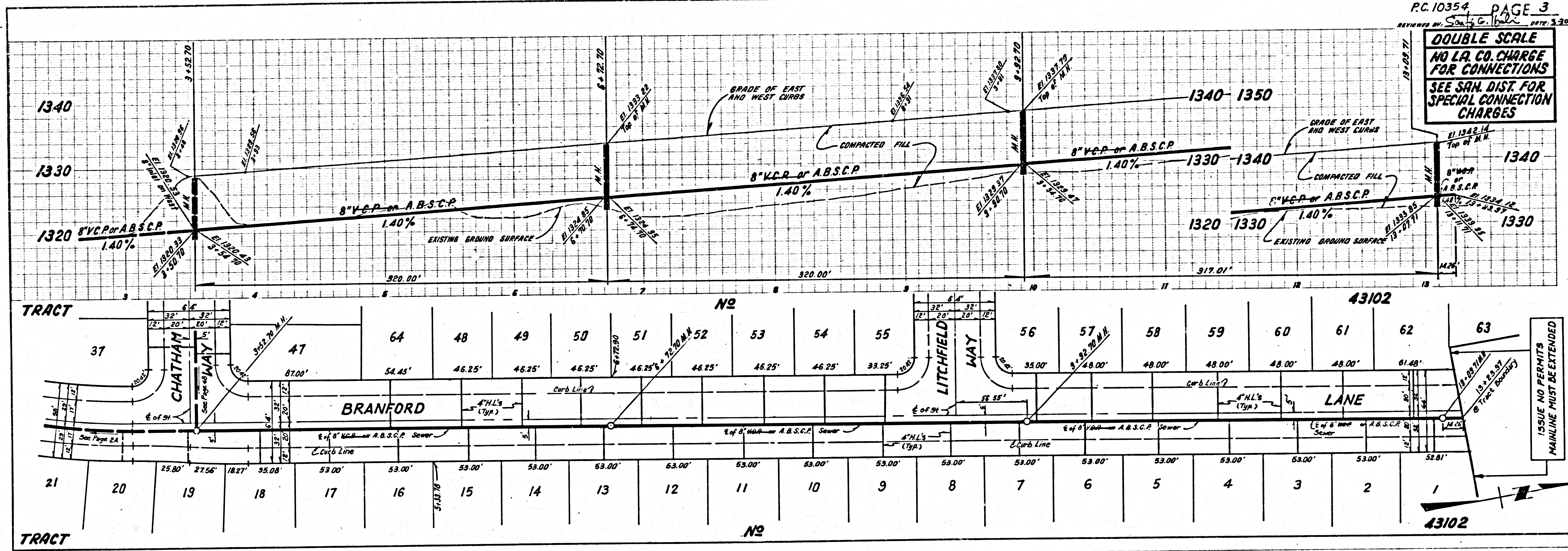
52236

COUNTY OF LOS ANGELES, CALIFORNIA
 THOMAS A. TIDEMANSON, DIRECTOR OF PUBLIC WORKS CHARLES M. CARRY, CHIEF ENGINEER
 APPROVED: *Carl J. Blum* 4/2/87 APPROVED: *Sam G. Balli* 4/14/87
 CHIEF ENGINEER OFFICE ENGINEER
 CHECKED: *Sperry* 4/2/87
 REG. C.E. NO. 16844
 Santa Clarita Valley BLDG. DIST. - 82 -

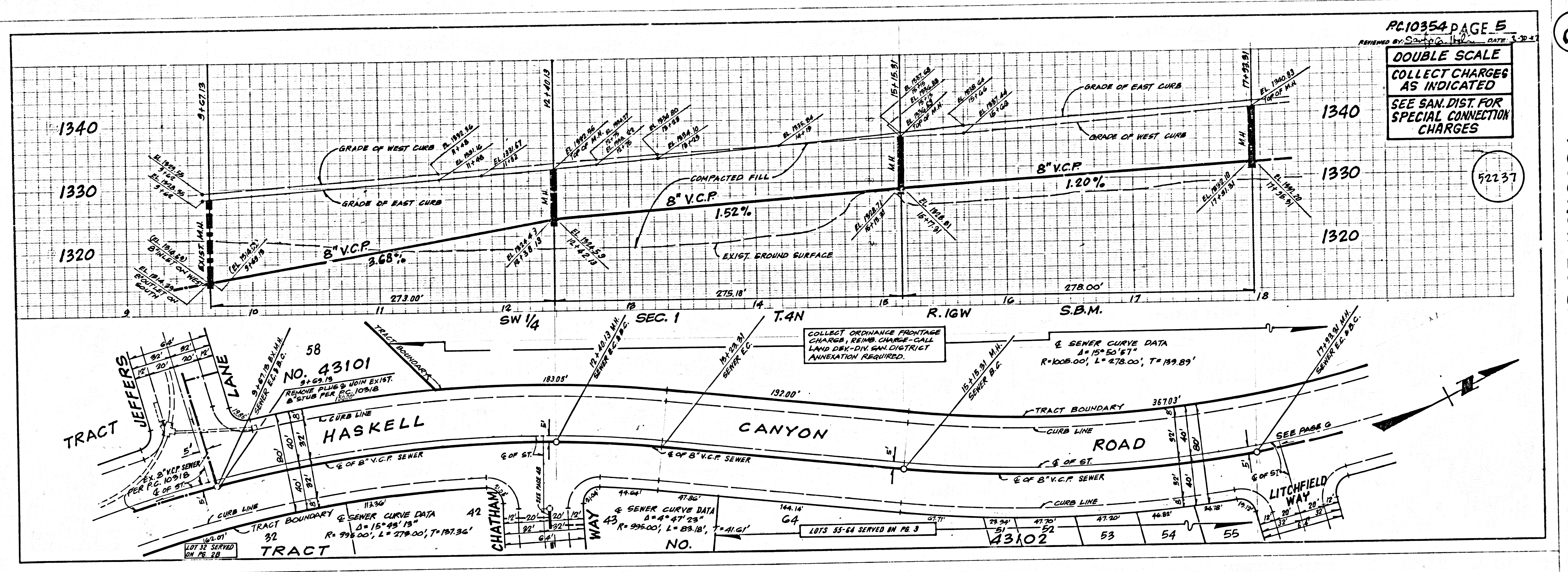


APPROVED BY: *Sam G. Balli* 10-9-87
 DEPT. OF PUBLIC WORKS DATE

1
 P2501 29 50624 29 TRACT



5
 23501 2A SUEP ON TRACT



KNOXVILLE SURVEYING CO.

