

# SANITARY SEWERS

TO BE CONSTRUCTED IN

## TRACT NO 43104

### PRIVATE CONTRACT NO. 10356

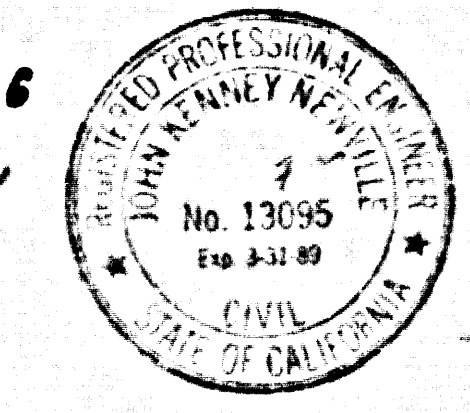
#### INDEX: A-93-D, 4

2 SHEETS, 4 PAGES

SCALE: VERT. 1" = 10'  
HORIZ. 1" = 100'

MARCH, 1916

ENGINEERING SERVICE CORPORATION  
2121 BROADWAY, LOS ANGELES, CALIF.  
BY: J.R. Newell  
REG. C.E. No. 13095



THE FOLLOWING LATEST REVISED STANDARD PLANS ON FILE IN THE OFFICE OF THE COUNTY ENGINEER SHALL APPLY IN THE CONSTRUCTION OF THIS PROJECT:

MINIMUM PUBLIC SAFETY REQUIREMENTS	5.1
BRICK MANHOLE	5.2
STANDARD MANHOLE STEP	5.3
BEDDING FOR SEWER PIPE	5.4
CREASING AND ENGAGEMENT	5.5
WTE OR TEE SUPPORT	5.6
ALLOWED TRENCH WIDTHS	5.7
WORKING MANHOLES, BRIMS AND COVERS	5.8
NON-REINFORCED PRECAST CONCRETE MANHOLE	5.9

52050

COUNTY OF LOS ANGELES, CALIFORNIA  
THOMAS A. HEDMANNSON, DIRECTOR OF PUBLIC WORKS  
CHARLES W. CARRY, CHIEF ENGINEER  
CO. SAN DIST. NO. 28  
APPROVED: Carl H. Blum 4/14/17, moved  
Checked: F. H. ... 3/31/17  
REG. C.E. NO. 16841  
SANTA CLARITA VALLEY BLDG. DIST. 82

## DOUBLE SCALE

### CONSTRUCTION NOTES: (CONT)

16. WVE BRANCHES ONLY MAY BE USED FOR CONNECTIONS TO MAIN LINE SEWER IF A.B.S.C.P. IS USED.
17. ALL JOINTS BETWEEN CAST IRON PIPE AND A.B.S.C.P. SHALL BE MADE WITH APPROVED FITTINGS.
18. FULL COMPLIANCE WITH PART III OF THE SPECIAL PROVISIONS IS REQUIRED FOR THE INSTALLATION OF A.B.S. COMPOSITE PIPE AND A.B.S. SOLID WALL HOUSE LATERALS.
19. MANHOLE WATER STOP SHEETS AND FLASHING ARE REQUIRED FOR THE CONNECTION OF A.B.S. COMPOSITE PIPE TO MANHOLE STRUCTURES.
20. A.B.S. SOLID WALL PIPE MUST BE USED FOR WVE AND HOUSE LATERAL CONNECTIONS TO A.B.S. COMPOSITE MAINLINE SEWER PIPE.
21. 8 DEGREE DEFLECTION COUPLERS SHALL BE USED TO ACCOMPLISH RADIUS OF CURVATURE LESS THAN 360'.
22. A.B.S. COMPOSITE PIPE SHALL BE BEDDED IN CONFORMANCE WITH THE TABLE IN SECTION B-31 OF PART III OF SPECIAL PROVISIONS.

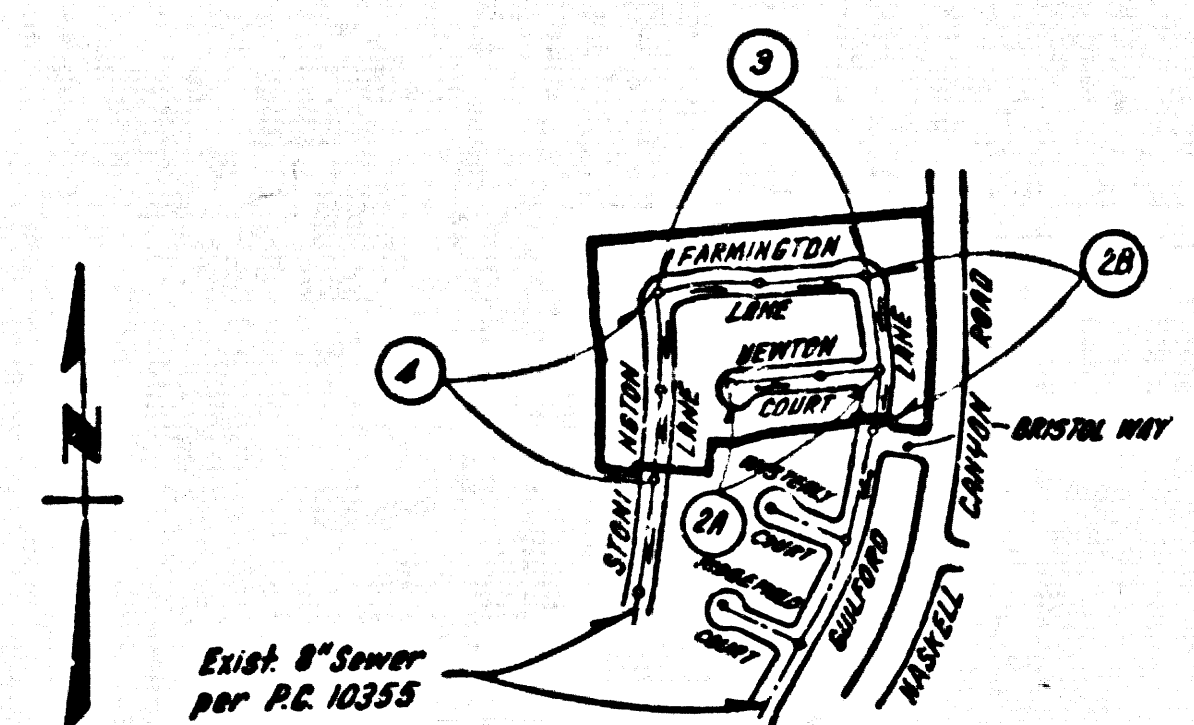
NO CONNECTION FOR THE DISPOSAL OF INDUSTRIAL WASTES SHALL BE MADE TO SEWERS SHOWN ON THESE DRAWINGS UNTIL A PERMIT FOR INDUSTRIAL WASTEWATER DISCHARGE HAS BEEN ISSUED BY THE SANITATION DISTRICTS FOR SAID CONNECTION.

BEFORE BREAKING INTO OR CONSTRUCTION ON A COUNTY SANITATION DISTRICT SEWER AND PRIOR TO FINAL ACCEPTANCE OF THE PROJECT, SANITATION DISTRICT INSPECTOR SHALL BE NOTIFIED BY PHONE (818) 962-8605 SO THAT REQUIRED INSPECTION CAN BE MADE.

ISSUE NO HOUSE CONNECTION PERMITS UNTIL OUTLET SEWERS FOR P.C. 10356 AND P.C. 10318 ARE ACCEPTED FOR PUBLIC USE BY THE COUNTY OF LOS ANGELES.

S.M. CL 3825 — ELEV. 1296.20'  
LACS ON MON IN NE COR CONC BASE CITY OF LA W.P. TOWER #12 1/2' DIA IN DOUBLET CANYON RD. 4' DIA IN W.P. C/L SUSAN BETH WAY AND (ON 204-1-106) NEWHALL QUAD. 19 83

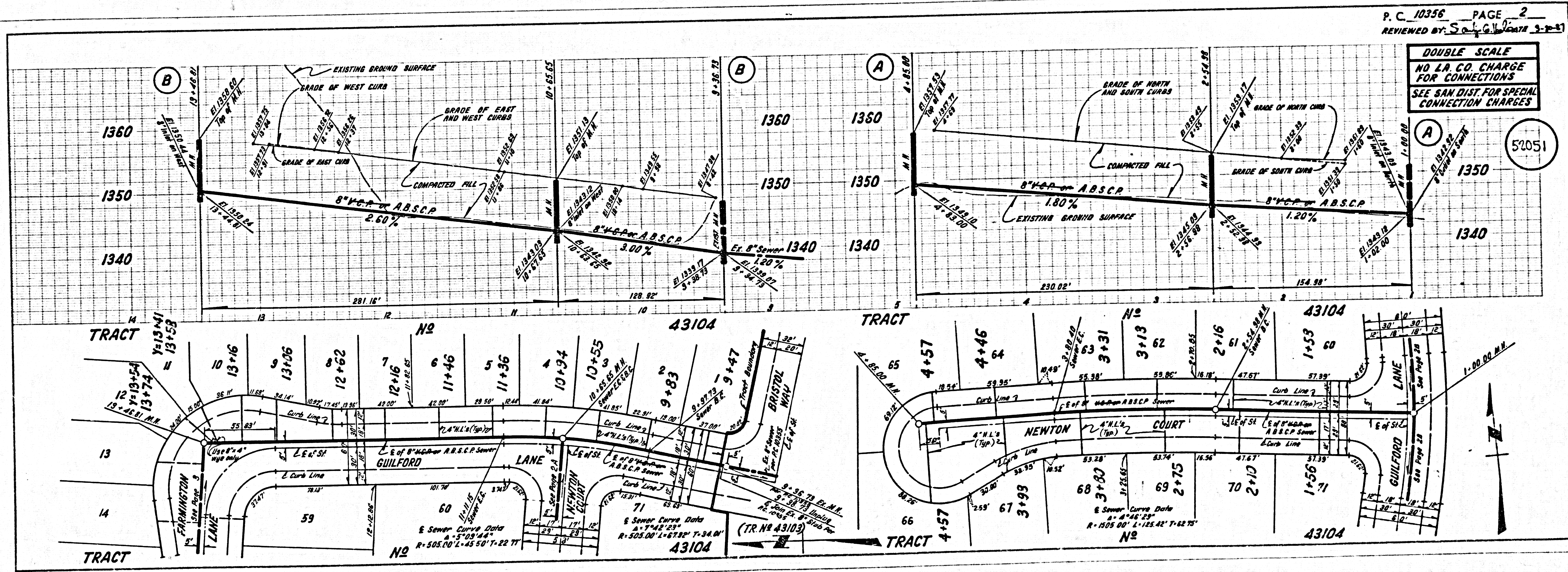
NOTE: NUMBERS IN CIRCLES INDICATE PAGE NUMBERS.



INDEX MAP  
TRACT NO 43104  
P.C. NO 10356  
Scale: 1" = 500'

- ### GENERAL NOTES:
1. ELEVATIONS ARE IN FEET ABOVE U.S.C. & G.S. SEA LEVEL DATUM OF 1929.
  2. NO REVISIONS SHALL BE MADE IN THESE PLANS WITHOUT THE APPROVAL OF THE DIRECTOR OF PUBLIC WORKS.
  3. NO REPRESENTATIVE OF THE COUNTY ENGINEER WILL SURVEY OR ANY PART OF ANY PORTION OF THE WORK.
  4. GRADIES TO SHOW THE IMPROVEMENT IS TO BE CONSTRUCTED AND SHOWN IN PLANS AND PROFILES. GRADES IN THE PROFILE CORNER CENTER LINE OF STREETS OR CENTER LINE OF ALLEYS ARE SHOWN BY DOTTED LINES. GRADES AT ALL POINTS BETWEEN DESIGNATED POINTS THE GRADE SHALL BE ESTABLISHED SO AS TO CONFORM TO A STRAIGHT LINE DRAWN BETWEEN SAID DESIGNATED POINTS.
  5. THE PRIVATE ENGINEER SHALL FURNISH THE GRADE SHEETS AND STATIONING FOR ALL HOUSE LATERALS AND T.Y. OF BRANCHES AND SHALL PROVIDE STAKES FOR THE LATERALS AND BRANCHES. STATIONING FOR ALL HOUSE LATERALS SHALL BE CONSTRUCTED IN A STRAIGHT ALIGNMENT AT POINT ANGLES WITH THE MAIN LINE AS SHOWN ON THE PLANS. HOUSE LATERALS FROM CHIMNEYS SHALL HAVE AN ANGLE OF LESS THAN 45° WITH THE MAIN LINE. SEWER ANY CHANGE IN ALIGNMENT SHALL BE REQUESTED IN WRITING BY THE PRIVATE ENGINEER.
  6. THE PRIVATE ENGINEER SHALL FURNISH THE HOUSE LATERAL DEPTH AT THE PROPERTY LINE BELOW THE TOP OF CURB ELEVATION FOR EACH HOUSE LATERAL ON THE GRADE SHEET.
  7. BEFORE WORK CAN BE STARTED THE CONTRACTOR MUST OBTAIN A PERMIT TO EXCAVATE IN PUBLIC STREETS FROM THE COUNTY ENGINEER OF THE COUNTY OF LOS ANGELES. THE PERMIT MUST BE OBTAINED FROM THE COUNTY ENGINEER, 2121 BROADWAY, LOS ANGELES, CALIF. TO COVER THE COST OF UNDERGROUND INSPECTION AND RECORD PLANS.
  8. IF WORK IS TO BE DONE IN A STATE HIGHWAY A PERMIT MUST BE OBTAINED FROM THE STATE OF CALIFORNIA, DIVISION OF HIGHWAYS, 120 SOUTH BRIDGE STREET, LOS ANGELES, CALIFORNIA.
  9. APPROVAL OF THE PLANS BY THE COUNTY ENGINEER DOES NOT CONSTITUTE A REPRESENTATION AS TO THE ACCURACY OF THE LOCATION OF OR THE EXISTENCE OR NON-EXISTENCE OF ANY UNDERGROUND UTILITY PIPE, OR STRUCTURE WITHIN THE LIMITS OF THIS PROJECT. THIS NOTE APPLIES TO ALL PAGES.
  10. REFER TO SECTION 710.41 OF THE REQUIRED SEWER CONSTRUCTION PERMIT. THE CONTRACTOR SHALL OBTAIN AND FILE WITH THE COUNTY ENGINEER COPIES OF A PERMIT TO EXCAVATE IN COUNTY STREETS FROM THE CONSTRUCTION DIVISION, DEPT. OF PUBLIC WORKS, 2121 BROADWAY, LOS ANGELES, CALIFORNIA. THE PERMIT TO EXCAVATE IN COUNTY STREETS FROM THE STATE OF CALIFORNIA DIVISION OF HIGHWAYS, 120 SOUTH BRIDGE STREET, LOS ANGELES, CALIFORNIA, SHALL BE OBTAINED FROM THE COUNTY ENGINEER, 2121 BROADWAY, LOS ANGELES, CALIFORNIA. NAME AS THE CERTIFICATE HOLDER TO BE MAINTAINED UNTIL PRIOR TO CANCELLATION OF PERMIT.

- ### CONSTRUCTION NOTES:
1. MAIN LINE SHALL BE CONSTRUCTED ACCORDING TO THE STANDARD SPECIFICATIONS FOR PUBLIC WORKS CONSTRUCTION (LATEST EDITION) WITH THE EXCEPTIONS AND SPECIAL PROVISIONS FOR THE CONSTRUCTION OF SANITARY SEWERS DATED SEPTEMBER 12, 1916.
  2. THE CONTRACTOR SHALL NOTIFY THE CONSTRUCTION DIVISION - PUBLIC WORKS BY TELEPHONE (213) 228-1221 AT LEAST 14 HOURS BEFORE STARTING ANY WORK UNDER THIS CONTRACT.
  3. HOUSE LATERALS TO BE CONSTRUCTED WITH INVERTS AT PROPERTY LINE 6 FEET BELOW CURB GRADE EXCEPT AS NOTED.
  4. WVE OR TEE BRANCHES MAY BE USED FOR CONNECTIONS TO MAINLINE SEWERS EXCEPT AS NOTED.
  5. ALL STRUCTURES SHALL BE EITHER BRICK MANHOLES PER S-3 OR PRECAST CONCRETE MANHOLES PER S-3 EXCEPT AS NOTED.
  6. PROVIDE STAKES ON THE PROPERTY LINE OR PROPERTY LINES PRODUCED AT RIGHT ANGLES TO THE SEWER LINE AT THE CENTER LINE OF EACH MANHOLE.
  7. MANHOLE TOPS IN UNIMPROVED RIGHTS OF WAY TO BE SIX INCHES ABOVE FINISHED GRADE.
  8. WITHEED CLAY PIPE JOINTS SHALL BE TYPE "D" OR "G" PER STANDARD SPECIFICATIONS SECTION 206-2.
  9. IF A POWER POLE IS WITHIN THREE FEET OF THE SEWER THE SEWER SHALL BE ENCASED PER S-28 CASE II. TWO FEET ON EACH SIDE FROM THE POINT OF INTERFERENCE.
  10. IF DURING THE COURSE OF CONSTRUCTION IT IS DETERMINED THAT THERE IS LESS THAN FOUR FEET OF COVER OVER THE TOP OF A MAIN LINE OR HOUSE LATERAL SEWER "D" OR "G" JOINTS SHALL BE MADE IN THE PLANS. THE PIPE SHALL BE ENCASED PER S-28 CASE II UNLESS OTHERWISE APPROVED BY THE DIRECTOR OF PUBLIC WORKS.
  11. ALL JOINTS BETWEEN CAST IRON PIPE AND WITHEED CLAY PIPE SHALL BE MADE WITH A RUBBER SLEEVE JOINT, TYPE "C" OR "D" (WITH BUSHING IF NECESSARY) PER STANDARD SPECIFICATIONS SECTION 206-2.
  12. SEWERS TO BE TESTED FOR LEAKAGE PER STANDARD SPECIFICATION 206-1.4 OF THE STANDARD SPECIFICATIONS AND SPECIAL PROVISIONS.
  13. REPAIR ALL FINISHED WITHIN PAVED AREAS TO MEET L.A. COUNTY PUBLIC WORKS IN CALIFORNIA STATE HIGHWAY REQUIREMENTS IN ACCORDANCE WITH PERMITS.
  14. FULL COMPLIANCE WITH SECTION 206-1.4 OF THE STANDARD SPECIFICATIONS WILL BE REQUIRED FOR BACKFILL IN STREETS, DRIVEWAYS, AND AREAS OF EXPOSURE TO TRAFFIC. BACKFILL SHALL BE A UNIFORM, REGISTERED TESTING LABORATORY SHALL BE OBTAINED BY THE PERMITTEE PRIOR TO THE ISSUANCE OF A CERTIFICATE OF PARTIAL ACCEPTANCE.
  15. SPECIAL BACKFILL IN EXISTING CONSTRUCTION (A) BACKFILL TRENCH AND REPLACE UTILITY EARTH SO AS TO ATTAIN THE NATURAL FINISHED GRADES AND SLOPES SHOWN ON THE DRAWINGS OR APPROVED FOR THIS DEVELOPMENT BY THE SANITATION DISTRICT INSPECTOR. (B) ALL BACKFILL EARTH SHALL BE COMPACTED TO A MINIMUM OF 90% OF MAXIMUM DENSITY PER A.S.T.M. STD. METHOD OF TEST OR BEST AS APPROVED. ACCEPTABLE CERTIFICATION OF SUCH COMPACTION SHALL BE SUBMITTED TO THE CONSTRUCTION DIVISION - PUBLIC WORKS.



P.C. 10356 PAGE 2  
REVIEWED BY: S. G. ...

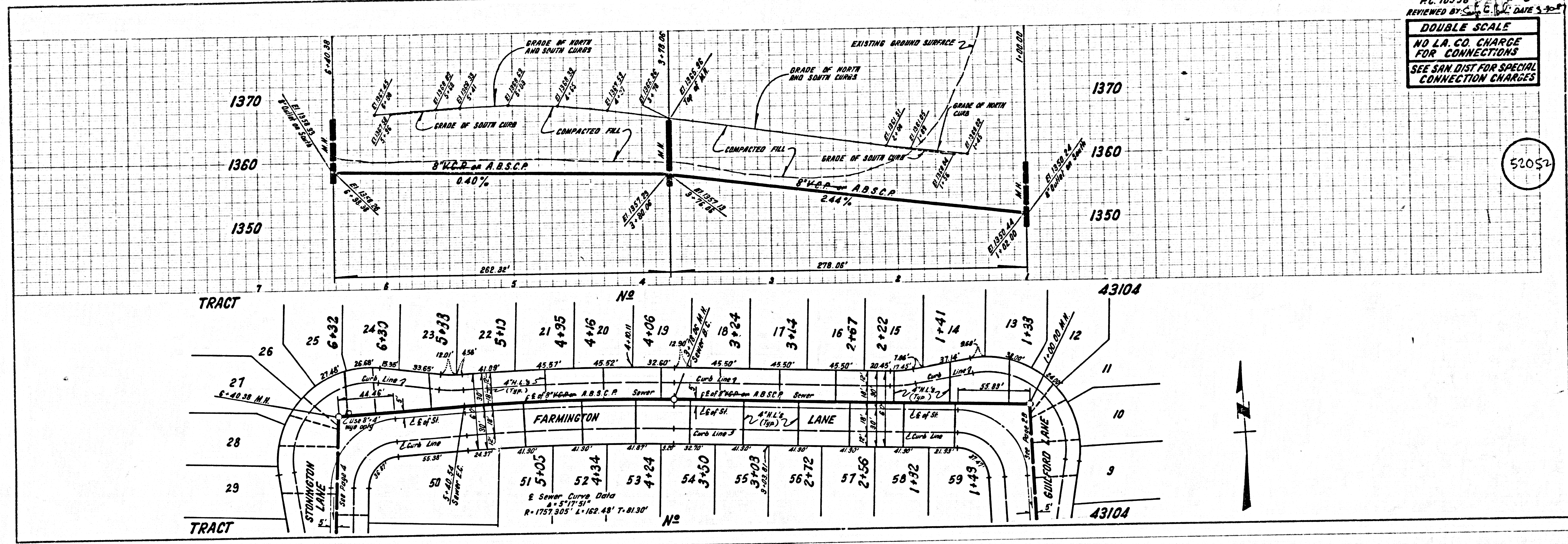
DOUBLE SCALE  
NO L.A. CO. CHARGE FOR CONNECTIONS  
SEE SAN DIST FOR SPECIAL CONNECTION CHARGES

52051



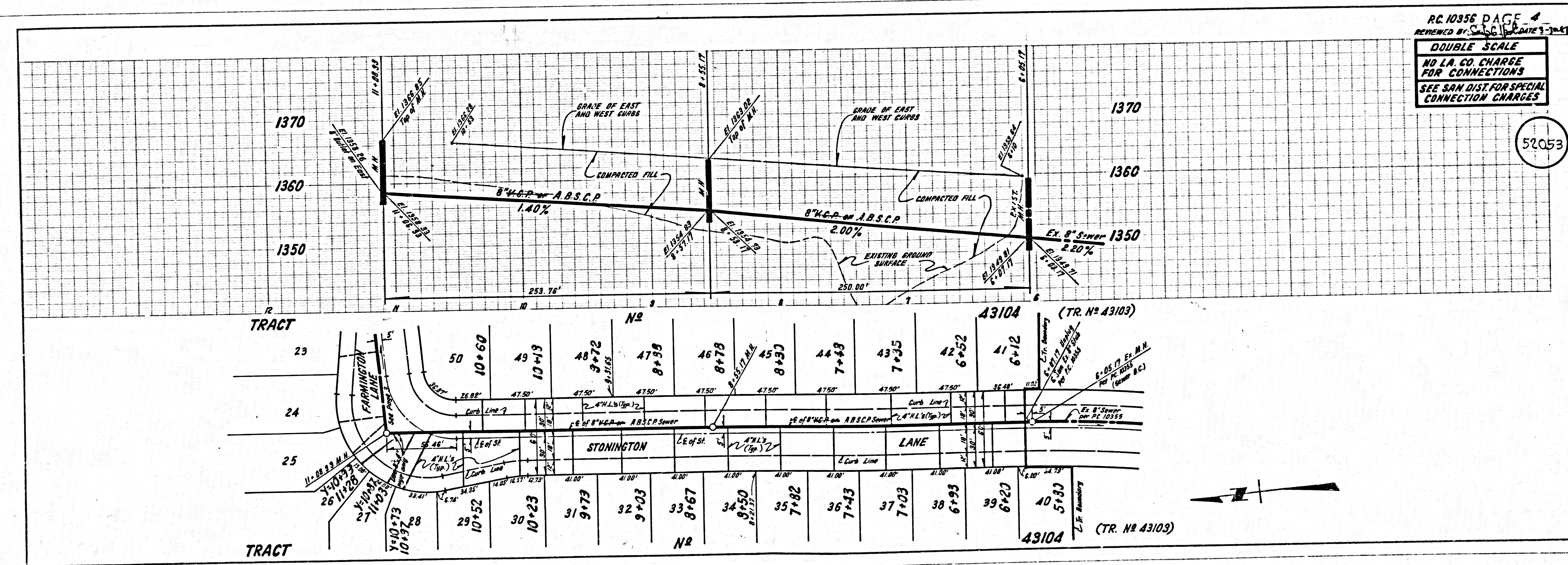
PC 10356 PAGE 3  
 REVIEWED BY: [Signature] DATE 3-20-95  
**DOUBLE SCALE**  
 NO L.A. CO. CHARGE  
 FOR CONNECTIONS  
 SEE SAN DIST FOR SPECIAL  
 CONNECTION CHARGES

52052



PC 10356 PAGE 4  
 REVIEWED BY: [Signature] DATE 3-20-95  
**DOUBLE SCALE**  
 NO L.A. CO. CHARGE  
 FOR CONNECTIONS  
 SEE SAN DIST FOR SPECIAL  
 CONNECTION CHARGES

52053



52052  
 52053  
 TRACT 29  
 TRACT 30  
 TRACT 31  
 TRACT 32  
 TRACT 33  
 TRACT 34  
 TRACT 35  
 TRACT 36  
 TRACT 37  
 TRACT 38  
 TRACT 39  
 TRACT 40  
 TRACT 41  
 TRACT 42  
 TRACT 43  
 TRACT 44  
 TRACT 45  
 TRACT 46  
 TRACT 47  
 TRACT 48  
 TRACT 49  
 TRACT 50  
 TRACT 51  
 TRACT 52  
 TRACT 53  
 TRACT 54  
 TRACT 55  
 TRACT 56  
 TRACT 57  
 TRACT 58  
 TRACT 59  
 TRACT 60  
 TRACT 61  
 TRACT 62  
 TRACT 63  
 TRACT 64  
 TRACT 65  
 TRACT 66  
 TRACT 67  
 TRACT 68  
 TRACT 69  
 TRACT 70  
 TRACT 71  
 TRACT 72  
 TRACT 73  
 TRACT 74  
 TRACT 75  
 TRACT 76  
 TRACT 77  
 TRACT 78  
 TRACT 79  
 TRACT 80  
 TRACT 81  
 TRACT 82  
 TRACT 83  
 TRACT 84  
 TRACT 85  
 TRACT 86  
 TRACT 87  
 TRACT 88  
 TRACT 89  
 TRACT 90  
 TRACT 91  
 TRACT 92  
 TRACT 93  
 TRACT 94  
 TRACT 95  
 TRACT 96  
 TRACT 97  
 TRACT 98  
 TRACT 99  
 TRACT 100