

SANITARY SEWERS

TO BE CONSTRUCTED IN

TRACT NO. 34936
PRIVATE CONTRACT NO. 10358
INDEX: U-138-A, B-445

W.S. 38

3 SHEETS, 6 PAGES

51199

SCALE: VERT. 1"=8'
HORIZ. 1"=40'

PREPARED IN THE OFFICES OF
PFELER & ASSOCIATES ENGINEERS
1559 N. COMMUNWALYN AVE. FULLERTON, CALIFORNIA, 92633

BY: *Philip J. Pflizer*
REG. C.E. NO. 12507

THE FOLLOWING LATEST REVISED STANDARD PLANS ON FILE IN THE OFFICE OF THE COUNTY ENGINEER SHALL APPLY IN THE CONSTRUCTION OF THIS PROJECT:

1938B	5-1
MINIMUM PUBLIC SAFETY REQUIREMENTS	5-2
BRICK MANHOLES	5-3
STANDARD MANHOLE STEP	5-4
BEDDING FOR SEWER PIPE	5-5
CHANGING AND ENCASING	5-6
WYE ON THE SURFACE	5-7
ALLOWABLE TRENCH WIDTHS	5-8
LOCKING MANHOLE FRAME AND COVER	5-9
NON-SHOCKING PRECAST CONCRETE MANHOLE	5-10

COUNTY OF LOS ANGELES, CALIFORNIA

THOMAS A. TIDEMANSON, DIRECTOR OF PUBLIC WORKS
CHARLES W. CARRY, CHIEF ENGINEER
APPROVED: *Philip J. Pflizer* 7/8/85
DATE: 7/8/85

CHECKED: *Sanjo G. Ivel* 7-8-85
DATE: 7-8-85

REG. C.E. NO. 33134
L.A. PUENTE, BLDG. DIST. 200

DOUBLE SCALE

GENERAL NOTES CONT.

10. ALL REFERENCES TO THIS PLAN BY THE COUNTY ENGINEER, THE ROAD DEPARTMENT, OR THE PUBLIC CONTROL DISTRICT SHALL APPLY TO THESE APPROPRIATE SECTIONS OF THE DEPARTMENT OF PUBLIC WORKS.

REVISION NO. 1 DATE 7-4-85
PAGE 3 - ADDED SEWER LATERALS FOR LOTS 29, 30, 31, 32, 33 AND 34. ADDED SEWER CASEMENTS TO BE RECORDED BY SEPARATE DOCUMENT.
APPROVED: *Sanjo G. Ivel* 7-4-85
DEPARTMENT OF PUBLIC WORKS

ISSUE NO HOUSE LATERAL CONNECTIONS UNTIL OUTLET P.C. 10130 IS ACCEPTED FOR PUBLIC USE.

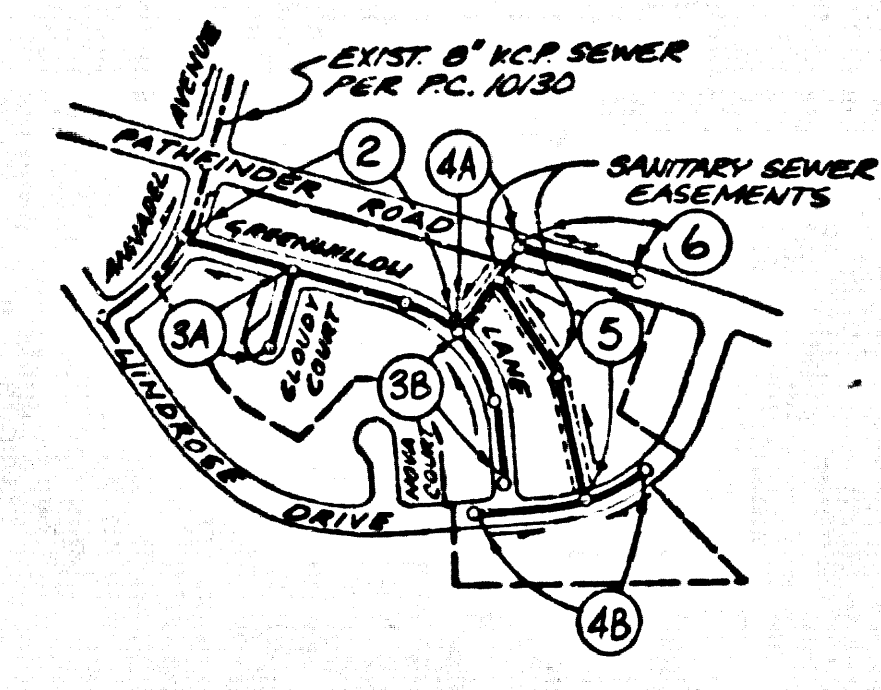
CONSTRUCTION NOTES CONT.

- 11. ALL JOINTS BETWEEN CAST IRON PIPE & A.B.S.C.P. SHALL BE MADE WITH APPROVED FITTINGS.
- 12. FULL COMPLIANCE WITH PART III OF THE SPECIAL PROVISIONS IS REQUIRED FOR THE INSTALLATION OF A.B.S.C.P. PIPE.
- 13. MANHOLE WATER STOP GASKETS AND CLAMPS ARE REQUIRED FOR THE CONNECTION OF A.B.S.C.P. PIPE TO MANHOLE STRUCTURES.
- 14. A.B.S.C.P. SHALL BE USED FOR WYE AND HOUSE LATERAL CONNECTIONS TO A.B.S.C.P. MAIN LINE SEWER PIPE.
- 15. A.B.S.C.P. SHALL BE BROODEN IN CONFORMANCE WITH THE TABLE IN SECTION 8-21 OF PART II OF THE SPECIAL PROVISIONS.
- 16. 3 DEGREE DEFLECTION COEFFICIENT SHALL BE USED TO ACCOMPLISH RADII OF CURVATURE LESS THAN 250'.

BEFORE BREAKING INTO OR CONSTRUCTION ON A COUNTY SANITATION DISTRICT SEWER AND PRIOR TO FINAL ACCEPTANCE OF THE PROJECT, SANITATION DISTRICT INSPECTORS SHALL NOTIFY AND BE PRESENT 72 HOURS BEFORE THAT REQUIRED INSPECTION CAN BE MADE.

NO CONNECTION FOR THE DISPOSAL OF INDUSTRIAL WASTES SHALL BE MADE TO SEWERS SHOWN ON THESE DRAWINGS UNTIL A PERMIT FOR INDUSTRIAL WASTEWATER DISCHARGE HAS BEEN ISSUED BY THE SANITATION DISTRICTS FOR SAID CONNECTION.

B.M. CG 3918 ELEV. 696.731
ROAD TAG IN C.S. 34 FT. E/O BCR
25 FT. S 100 FT. E/O S INT.
DIAMOND BAR BLVD. & SUNSET
CROSSING ROAD
OTTERBEIN QUAD. 19 80.



INDEX MAP
P.C. 10358 TRACT NO. 34936
SCALE: 1"=600'

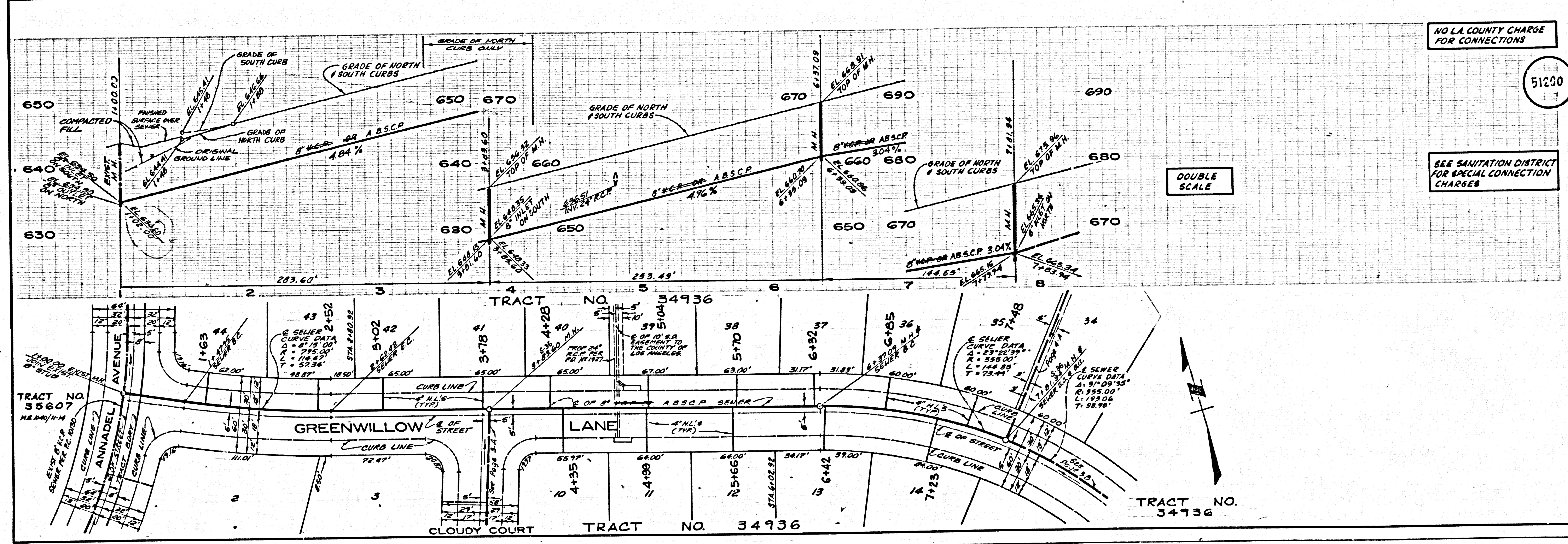
NOTE: NUMBERS IN CIRCLES INDICATE PAGE NUMBERS.

NO L.A. COUNTY CHARGE FOR CONNECTIONS

51200

SEE SANITATION DISTRICT FOR SPECIAL CONNECTION CHARGES

DOUBLE SCALE



34936 10358

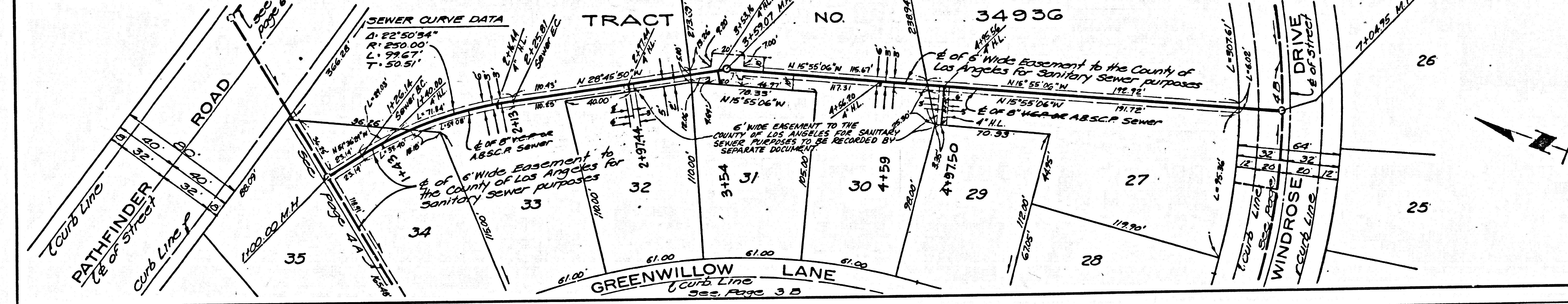
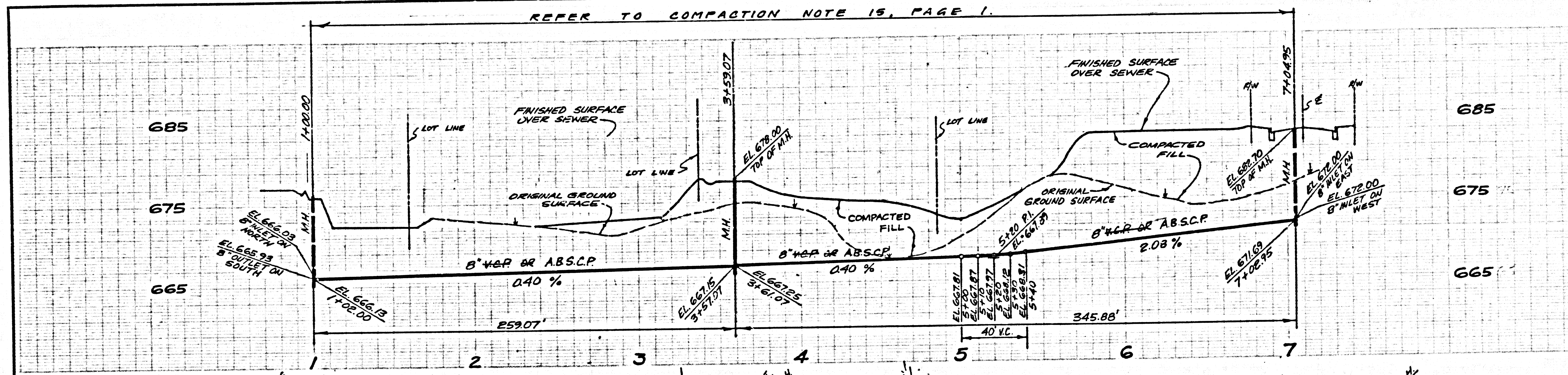
34936 10358

NO L.A. COUNTY CHARGE FOR CONNECTIONS

51203

DOUBLE SCALE

SEE SANITATION DISTRICT FOR SPECIAL CONNECTION CHARGES

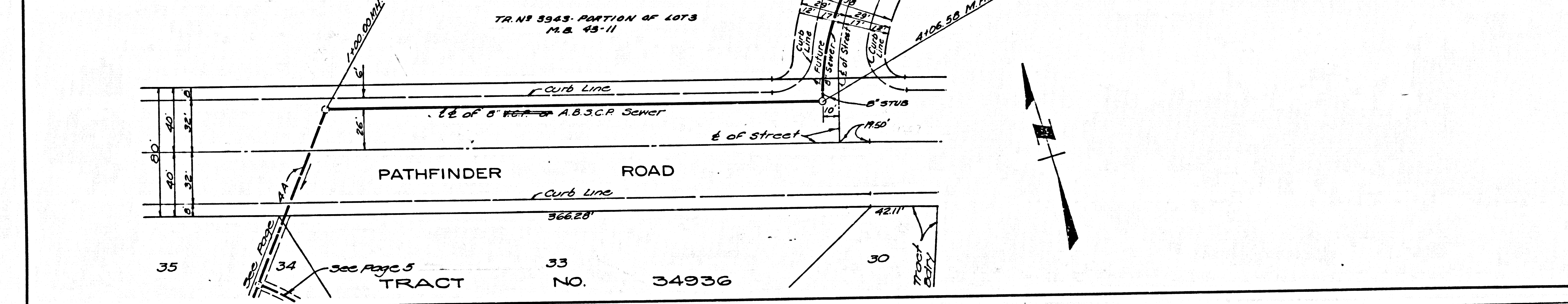
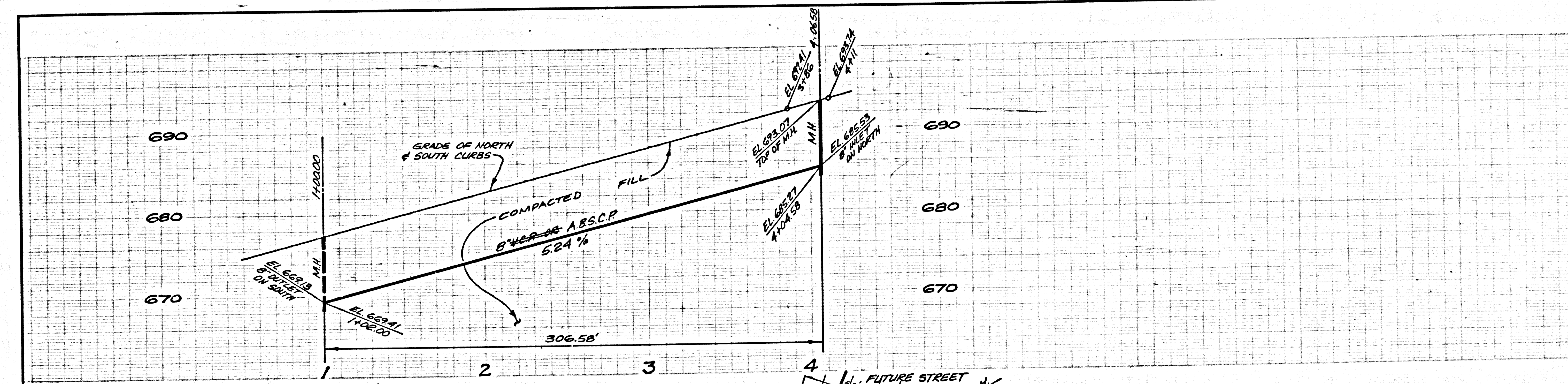


NO L.A. COUNTY CHARGE FOR CONNECTIONS

51204

DOUBLE SCALE

SEE SANITATION DISTRICT FOR SPECIAL CONNECTION CHARGES



82E01 39

82E4E ON TRACT