

D.M. CY 7547 ELEV. 816.027
 STATE HWY MON. IN WELL 10' DN. UN E LIBERTY
 CANYON ROAD UNDER CROSSING 30 FT. S.
 EAST BOUND OFF RAMP VENTURA FWY
 MALIBU QUAD. 19 80

DOUBLE VERTICAL SCALE

GENERAL NOTES CONT'D.

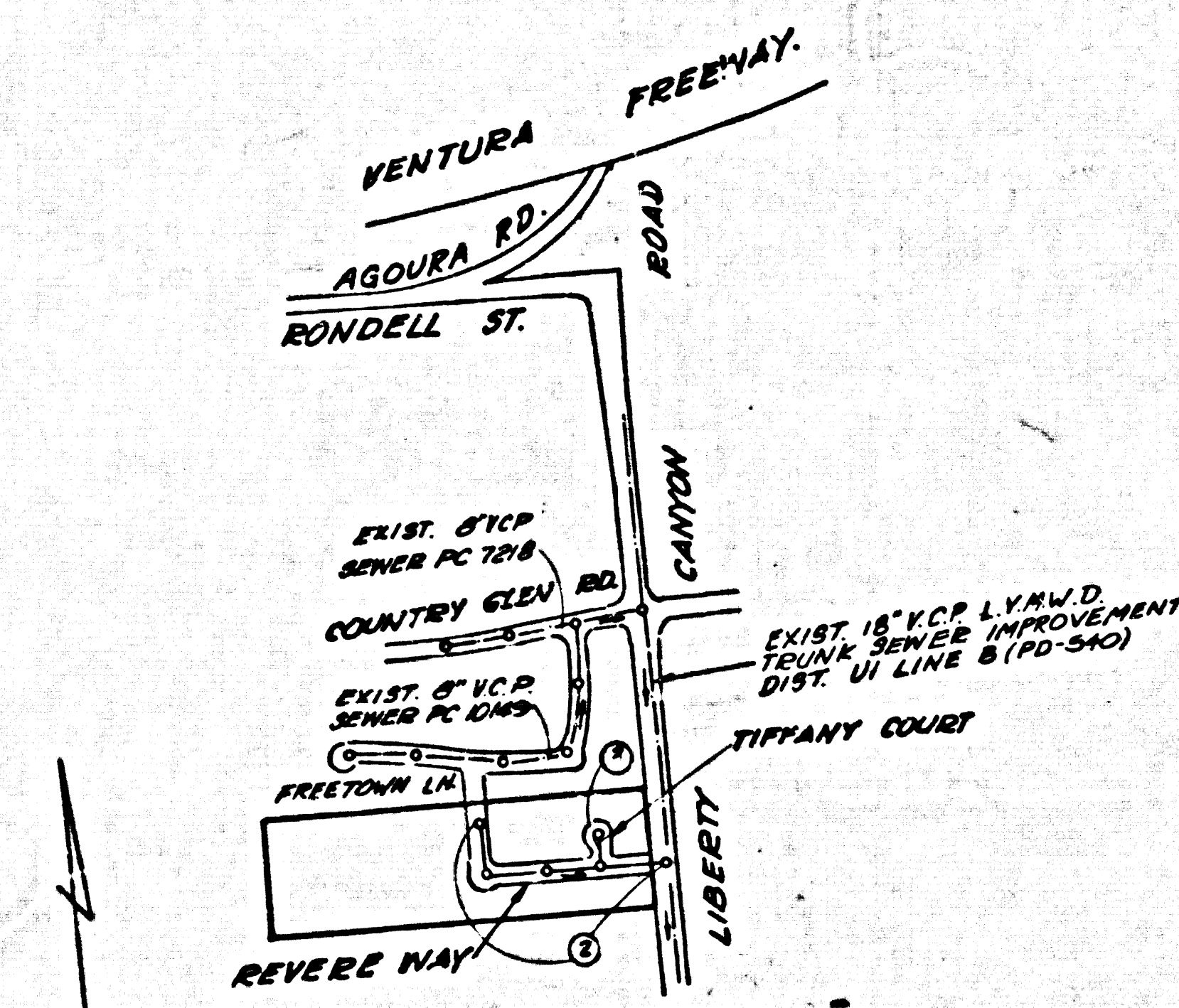
12. ALL REFERENCES ON THIS PLAN TO THE COUNTY ENGINEER, THE ROAD DEPARTMENT, OR THE PUBLIC WORKS DISTRICT SHALL APPLY TO THOSE APPROPRIATE SECTIONS OF THE DEPARTMENT OF PUBLIC WORKS.
13. CONSTRUCTION NOTES CONT'D.
14. FULL COMPLIANCE WITH PART II OF THE SPECIAL PROVISIONS IS REQUIRED FOR THE INSTALLATION OF A.B.S. COMPOSITE PIPE.
17. MANHOLE WATER STOP GASKETS & CLAMPS ARE REQUIRED FOR THE CONNECTION OF A.B.S. COMPOSITE PIPE TO MANHOLE STRUCTURES.
18. A.B.S. SOLID WALL PIPE MUST BE USED FOR NYE & HOUSE LATERAL CONNECTIONS TO A.B.S. COMPOSITE MAINLINE SEWER PIPE.
19. A.B.S. COMPOSITE PIPE SHALL BE BEDDED IN CONFORMANCE WITH THE TABLE IN SECTION 8-3.1 OF PART II OF THE SPECIAL PROVISIONS.
20. THREE DEGREE DEFLECTION COUPLERS ARE REQUIRED FOR RADIUS OF CURVATURE LESS THAN 300 FEET WHEN USING 8" A.B.S.C.P.
21. NO CONNECTIONS FOR THE DISPOSAL OF INDUSTRIAL WASTE IS ALLOWED IF A.B.S. COMPOSITE PIPE IS USED.
22. SEWER LINE CURVATURE SHALL NOT BE ACHIEVED BY PULLING THE JOINTS OF RETILING PIPE ENDS WHEN USING PLASTIC PIPE INCLUDING A.B.S. COMPOSITE PIPE.
23. CONTRACTOR TO VERIFY INVERT ELEVATION OF 18" V.C.P. SEWER PIPE AT START OF CONSTRUCTION (STA. 0+95.98) AND TO ADJUST ACCORDINGLY.
24. SLOFFIT ELEVATION OF THE 18" V.C.P. INLET TO PROPOSED M.H. (STA. 95+07.43) L.V.M.W.D. TRUNK SEWER WILL WITHIN SLOFFIT ELEVATIONS OF 8" INLETS INTO MANHOLE.
25. HOUSE LATERALS FOR LOTS 4, 5 AND 9 TO BE CONSTRUCTED PER S-23 CASE I.

GENERAL NOTES:

1. ELEVATIONS ARE IN FEET ABOVE U.S.C. & G.S. SEA LEVEL DATUM OF 1988.
2. NO REVISIONS SHALL BE MADE IN THESE PLANS WITHOUT THE APPROVAL OF THE DEPT. OF PUBLIC WORKS.
3. NO REPRESENTATIVE OF THE PUBLIC WORKS WILL SURVEY OR LAY OUT ANY PORTION OF THE WORK.
4. GRADES TO WHICH THIS IMPROVEMENT IS TO BE CONSTRUCTED ARE SHOWN ON PLANS AND "POSSIBLE GRADE POINTS FOR TOP OF CURBS, CENTER LINE OF STREETS, OR CENTER LINE OF ALLEYS ARE SHOWN BY CIRCLES OR PROJECTIONS AT ALL POINTS BETWEEN DESIGNATED POINTS THE GRADE SHALL BE ESTABLISHED SO AS TO CONFORM TO A STRAIGHT LINE DRAWN BETWEEN SAID DESIGNATED POINTS.
5. THE PRIVATE ENGINEER SHALL FURNISH THE HOUSE LATERAL DEPTH AT THE PROPERTY LINE BELOW THE TOP OF CURB ELEVATION FOR EACH HOUSE LATERAL ON THE GRADE SHEET.
6. BEFORE WORK CAN BE STARTED, THE CONTRACTOR MUST OBTAIN A PERMIT TO EXCAVATE IN COUNTY STREETS FROM THE L.A. COUNTY ROAD DEPT., DISTRICT OFFICE NO. 3, 400 N. GARDEN ST., LOS ANGELES, CA 90012. AN A.F.E. TO THE DEPT. OF PUBLIC WORKS, 350 VERNON BLVD., LOS ANGELES, CA 90008, TO COVER THE COST OF CONSTRUCTION INSURANCE AND RECORD PLANS.
7. IF WORK IS TO BE DONE IN STATE HIGHWAY A PERMIT MUST BE OBTAINED FROM THE STATE OF CALIFORNIA, DIVISION OF HIGHWAYS, 180 SOUTH SPRING STREET, LOS ANGELES, CALIFORNIA.
8. APPROVAL OF THIS PLAN BY THE COUNTY OF LOS ANGELES DOES NOT CONSTITUTE A REPRESENTATION AS TO THE ACCURACY OF THE LOCATION OF OR THE EXISTENCE OR NON-EXISTENCE OF ANY UNDERGROUND UTILITY PIPE OR STRUCTURE WITHIN THE LIMITS OF THIS PROJECT. THIS NOTE APPLIES TO ALL PAGES.
9. REFER TO SECTION 7.04.1 OF THE STANDARD SPECIFICATIONS, REGARDING SAFETY ORDERS.
10. PRIOR TO THE ISSUANCE OF THE REQUIRED SEWER CONSTRUCTION PERMIT, THE CONTRACTOR SHALL OBTAIN AND FILE WITH THE DEPT. OF PUBLIC WORKS COPIES OF A PERMIT TO EXCAVATE IN COUNTY STREETS FROM THE LOS ANGELES COUNTY ROAD DEPARTMENT, A PERMIT FOR EXCAVATIONS AND TRENCHES FROM THE STATE OF CALIFORNIA, DIVISION OF INDUSTRIAL SAFETY AND A CERTIFICATE OF WORKER'S COMPENSATION INSURANCE WITH THE DEPARTMENT OF PUBLIC WORKS, 350 SOUTH VERNON, P.O. BOX 100, LOS ANGELES, CALIFORNIA 90008. NAMED AS THE CERTIFICATE HOLDER TO BE NOTIFIED 30 DAYS PRIOR TO CANCELLATION OF POLICY.

CONSTRUCTION NOTES:

1. WORK SHALL BE CONSTRUCTED ACCORDING TO THE STANDARD SPECIFICATIONS FOR PUBLIC WORKS CONSTRUCTION (1988 EDITION WITH SUPPLEMENTS) AND COUNTY ENGINEER SPECIAL PROVISIONS FOR THE CONSTRUCTION OF SANITARY SEWERS DATED SEPT. 21, 1978.
2. THE CONTRACTOR SHALL NOTIFY THE CONSTRUCTION DIVISION BY TELEPHONE 225-2224 AT LEAST TWENTY-FOUR HOURS BEFORE STARTING ANY WORK UNDER THIS CONTRACT.
3. HOUSE LATERALS TO BE CONSTRUCTED WITH INVERTS AT PROPERTY LINE 8 FEET BELOW CURB GRADE EXCEPT AS NOTED.
4. NYE ON TREE BRANCHES MAY BE USED FOR CONNECTIONS TO MAINLINE SEWERS IF A B.S.C.P. IS USED.
5. ALL STRUCTURES SHALL BE EITHER BRICK MANHOLES PER S-23 CASE I OR CONCRETE MANHOLES PER S-23 CASE II.
6. PROVIDE STAKES ON THE PROPERTY LINE PRODUCE AT RIGHT ANGLES TO THE SEWER LINE AT THE CENTER LINE OF EACH MANHOLE.
7. MANHOLE TOPS IN UNIMPROVED AREAS TO BE SIX INCHES ABOVE FINISHED GRADE.
8. WITHIN CLAY PIPE JOINTS SHALL BE TYPE "D" OR "E" PER STANDARD SPECIFICATIONS SECTION 8-2.2. TWO FEET ON EACH SIDE OF A POWER POLE IS WITHIN THREE FEET OF THE SEWER. THE SEWER SHALL BE ENCASED PER S-23 CASE I AND TWO FEET ON EACH SIDE FROM THE POINT OF INTERFERENCE.
9. IF DURING THE COURSE OF CONSTRUCTION IT IS DETERMINED THAT THERE IS LESS THAN FOUR FEET OF COVER OVER THE TOP OF A MAIN LINE OR HOUSE LATERAL SEWER WHICH IS NOT INDICATED ON THE PLANS, THE PIPE SHALL BE ENCASED PER S-23 CASE I UNLESS OTHERWISE APPROVED BY THE COUNTY ENGINEER.
10. ALL JOINTS BETWEEN CAST IRON PIPE AND WITHIN CLAY PIPE SHALL BE MADE WITH A RUBBER SLEEVE JOINT, TYPE "C" OR "D" WITH BACKFILL IF NECESSARY PER STANDARD SPECIFICATIONS SECTION 8-2.2.
11. ALL JOINTS BETWEEN CAST IRON PIPE SHALL BE MADE WITH APPROVED FITTINGS.
12. SEWER TO BE TESTED FOR LEAKAGE PER SECTION 8-2.3 OF THE STANDARD SPECIFICATIONS AND SPECIAL PROVISIONS.
13. RESURFACE ALL TRENCHES WITHIN PAVED AREAS TO MEET L.A. COUNTY ROAD DEPT. OR CALIFORNIA STATE HIGHWAY REQUIREMENTS IN ACCORDANCE WITH PERMITS.
14. FULL COMPLIANCE WITH SECTION 8-2.3 OF THE SPECIAL PROVISIONS WILL BE REQUIRED FOR BACKFILL IN STREETS. CERTIFICATION OF BACKFILL COMPACTION AND SAND EQUIVALENTS BY A QUALIFIED, REGISTERED TESTING LABORATORY SHALL BE PROVIDED BY THE PERMITTEE PRIOR TO THE ISSUANCE OF A CERTIFICATE OF PARTIAL ACCEPTANCE.
15. SPECIAL BACKFILL IN EASEMENT CONSTRUCTION: (A) BACKFILL TRENCH AND REPLACE OTHER EARTH SO AS TO ACHIEVE THE NATURAL OR FINISHED GRADES AND SLOPES SHOWN ON THE GRADING PLAN APPROVED FOR THIS DEVELOPMENT BY THE BUILDING AND SAFETY DIVISION; (B) ALL BACKFILL AND EARTH REPLACED SHALL BE COMPACTED TO A MINIMUM OF 90% OF MAXIMUM DENSITY PER A.S.T.M. STD. METHOD OF TEST D998 BY AN APPROVED ACCEPTABLE CERTIFICATION OF SOIL COMPACTION SHALL BE SUBMITTED TO THE CONSTRUCTION DIVISION - PUBLIC WORKS.



INDEX MAP
 SCALE: 1" = 600'
 TRACT NO. 34827
 P.C. 10362

REVISION NO. 1 DATE: 7/16/86
 HOUSE LATERALS FOR LOTS
 4, 5 AND 9 REVISED PER S-23
 CASE I. ON PAGE 2
 APPROVED: [Signature] 7-16-86
 DEPT. OF PUBLIC WORKS

SANITARY SEWERS

TO BE CONSTRUCTED IN
 TRACT No. 34827

PRIVATE CONTRACT NO. 10362

C-241, C-3 W.S. 90
 2 SHEETS, 3 PAGES
 SCALE: VERT. 1" = 4' HORIZ. 1" = 40'
 DATE: MARCH 22, 1985
 PREPARED IN THE OFFICES OF
 VANTAGE ENGINEERING CO. INC.
 23241 VENTURA BLVD. STE. 208 WOODLAND HILLS, CA 91364
 BY: [Signature] O. M. [Signature]
 REG. C.E. No. 14815

THE FOLLOWING LATEST REVISED STANDARD PLANS ON FILE IN THE OFFICE OF THE COUNTY ENGINEER SHALL APPLY TO THE CONSTRUCTION OF THIS PROJECT:

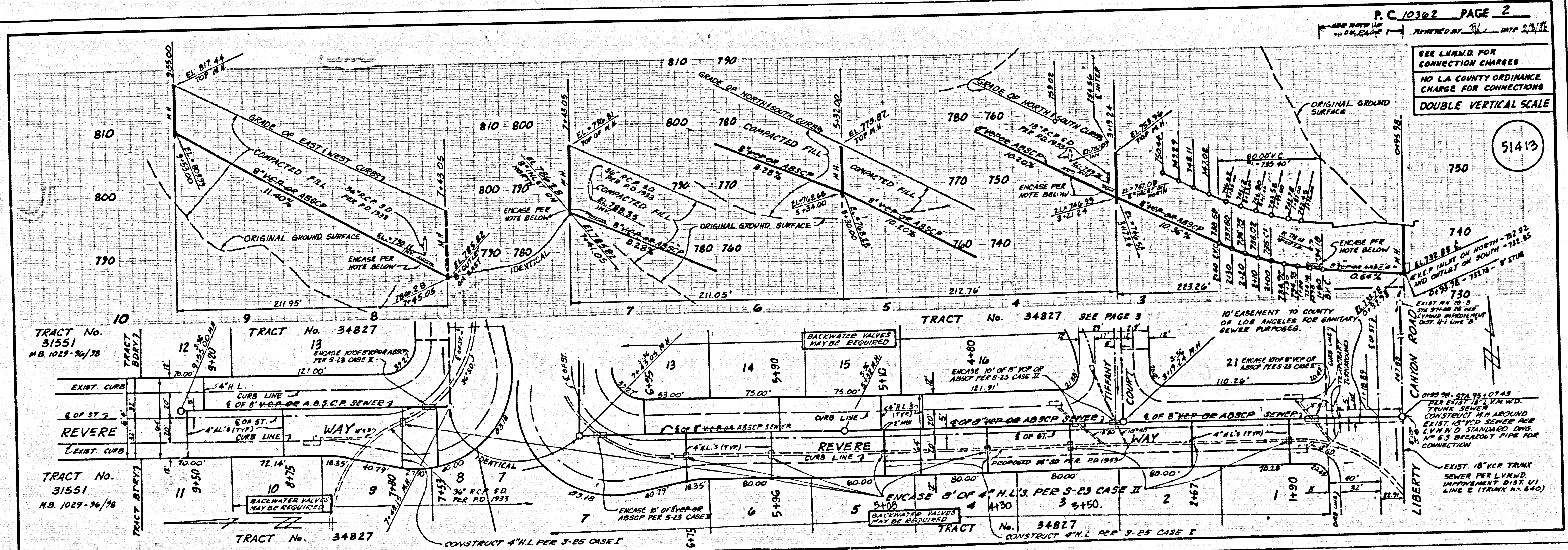
USING	01
MINIMUM PUBLIC SAFETY REQUIREMENTS	02
BRICK MANHOLES	03
STANDARD MANHOLE RING	04
ENCASING FOR SEWER PIPE	05
CHANGING AND ENCASING	06
NYE ON THE SUPPORT	07
ALLOWABLE TRENCH WIDTHS	08
STANDARD MANHOLE PLANS AND COPIES	09
NON-IMPREGATED PORTLAND CEMENT CONCRETE	10

THE FOLLOWING LAB VIRGENES MUNICIPAL WATER DISTRICT STANDARDS SHALL APPLY IN THE CONSTRUCTION OF THIS PROJECT:

STANDARD MANHOLE 0-8

COUNTY OF LOS ANGELES, CALIFORNIA

THOMAS A. TIDEMANSON, DIRECTOR OF PUBLIC WORKS
 APPROVED: [Signature] 3-27-86
 LAS VIRGENES MUNICIPAL WATER DISTRICT
 APPROVED: [Signature] 3-27-86
 H. B. STOKES, CHIEF ENGINEER
 CALABASAS BLDG. DIST. 31



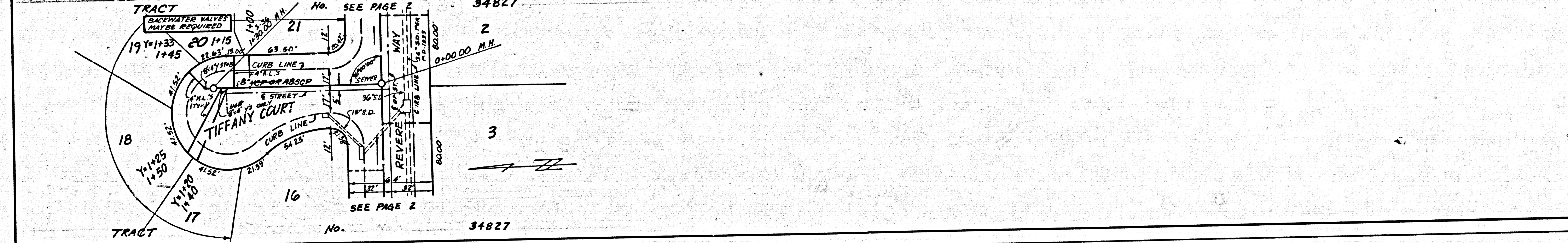
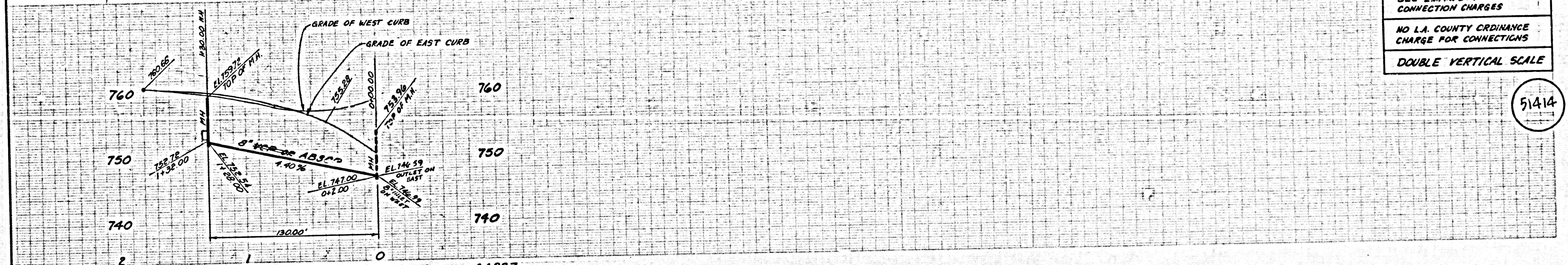
SEE L.V.M.W.D. FOR CONNECTION CHARGES
 NO L.A. COUNTY ORDINANCE CHARGE FOR CONNECTIONS
 DOUBLE VERTICAL SCALE

ISSUE 6/7/85

S280129 T5845.0M TCAART

SEE LHMWD FOR CONNECTION CHARGES
 NO L.A. COUNTY ORDINANCE CHARGE FOR CONNECTIONS
 DOUBLE VERTICAL SCALE

51414



PLC
 AND

M3

M5