

TO BE CONSTRUCTED IN
TRACT NO. 43573
PRIVATE CONTRACT NO. 10363
 C-231, C-4
 W.S. 90
 2 SHEETS, 3 PAGES

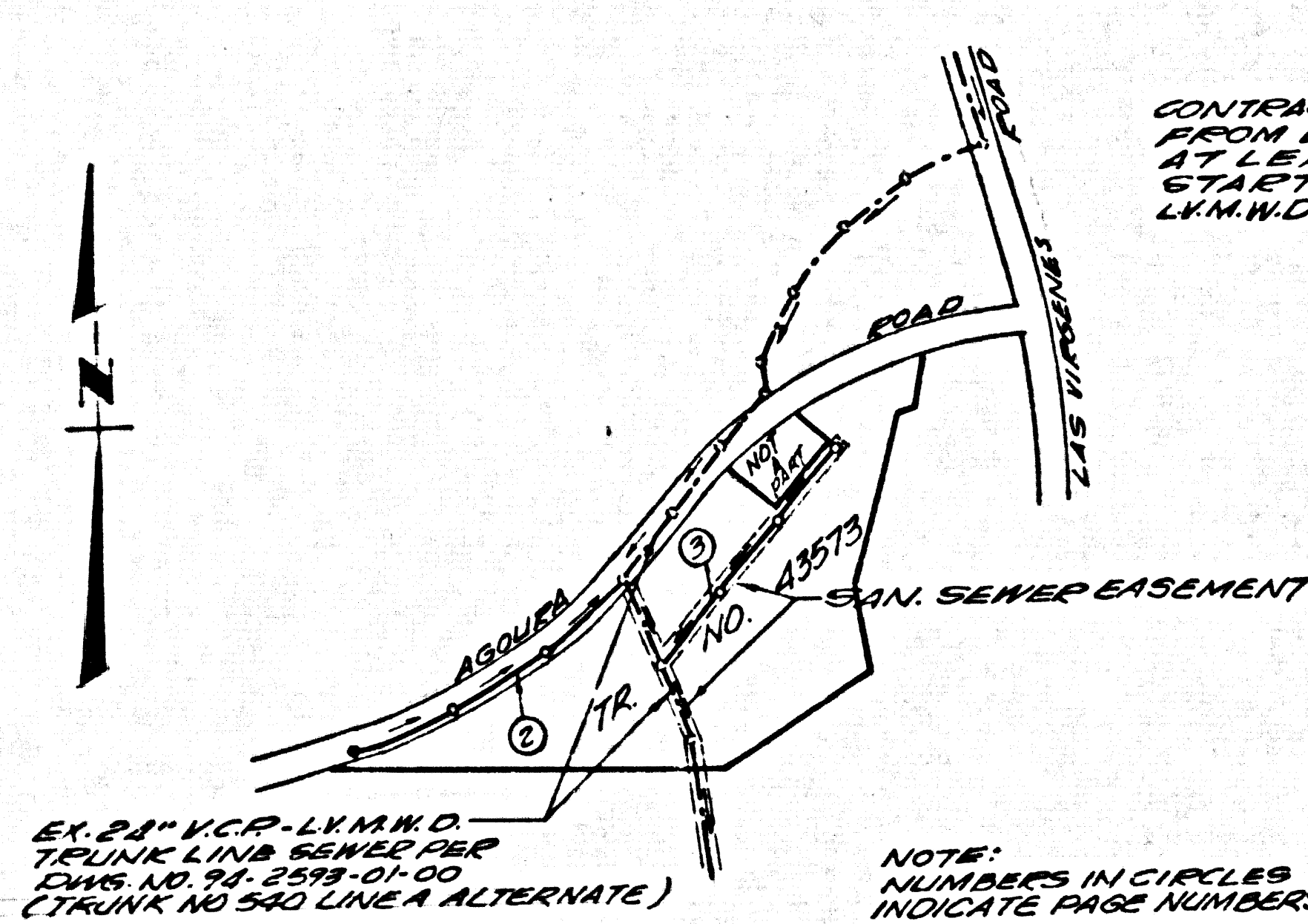
SCALE: VERT. 1" = 5'
 HORIZ. 1" = 50'
 MARCH 1985
 PREPARED IN THE OFFICES OF
JENNINGS ENGINEERING CO.
 1188 BALBOA BOULEVARD
 VAN NUYS, CALIFORNIA, 91408
 BY: M. J. ...
 REG. C. E. No. 13168

THE FOLLOWING LATEST REVISION STANDARDS ON FILE IN THE OFFICE OF THE COUNTY ENGINEER SHALL APPLY IN THE CONSTRUCTION OF THIS PROJECT:

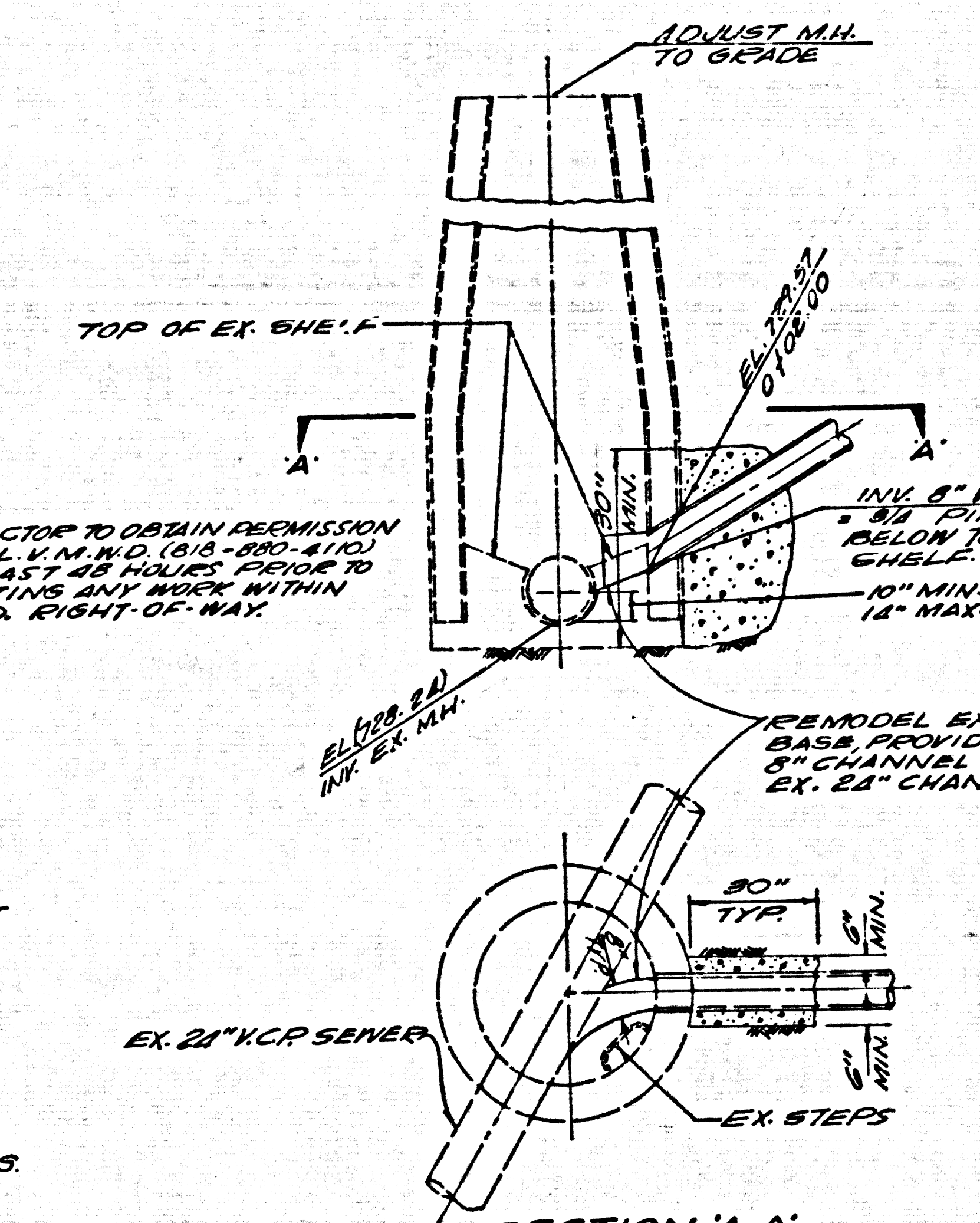
LEGEND	5-1
MINIMUM PUBLIC SAFETY REQUIREMENTS	5-2
BRICK MANHOLES	5-3
STANDARD MANHOLE STEP	5-7
ROOFING FOR SEWER PIPE	5-9
CRADLING AND BACKFILLING	5-10
ENCASING FOR SEWER PIPE	5-11
ALLOWABLE TRENCH WIDTHS	5-12
LOCKING MANHOLE FRAME AND COVER	5-13
NON-REINFORCED PRECAST CONCRETE MANHOLE	5-14
L.V.M.W.D. 8" BENCH MARK	5-15

COUNTY OF LOS ANGELES, CALIFORNIA
 LAS VIRGENES MUNICIPAL WATER DISTRICT
THOMAS A. TIDEMANSON
 DIRECTOR OF PUBLIC WORKS
 APPROVED: *[Signature]* 7-16-85
M. J. ...
 CHIEF ENGINEER 7/31/85
 CHECKED: *[Signature]* 7-16-85
 REG. C.E. NO. 32149
 CALABASAS BLDG. DIST. 9.1

B.M. CX 9023 ELEV. 768.833
 E.D. B.M. 748 IN C.B. P.F.T. S. ROR 55 FT.
 S. AND W.E.T. E. CENTERLINE INT.
 LAB WIRELESS ROAD AND OLD
 GREENWAY ON RAMP AT MOBIL STA.
 MALIBU QUAD. 19 00

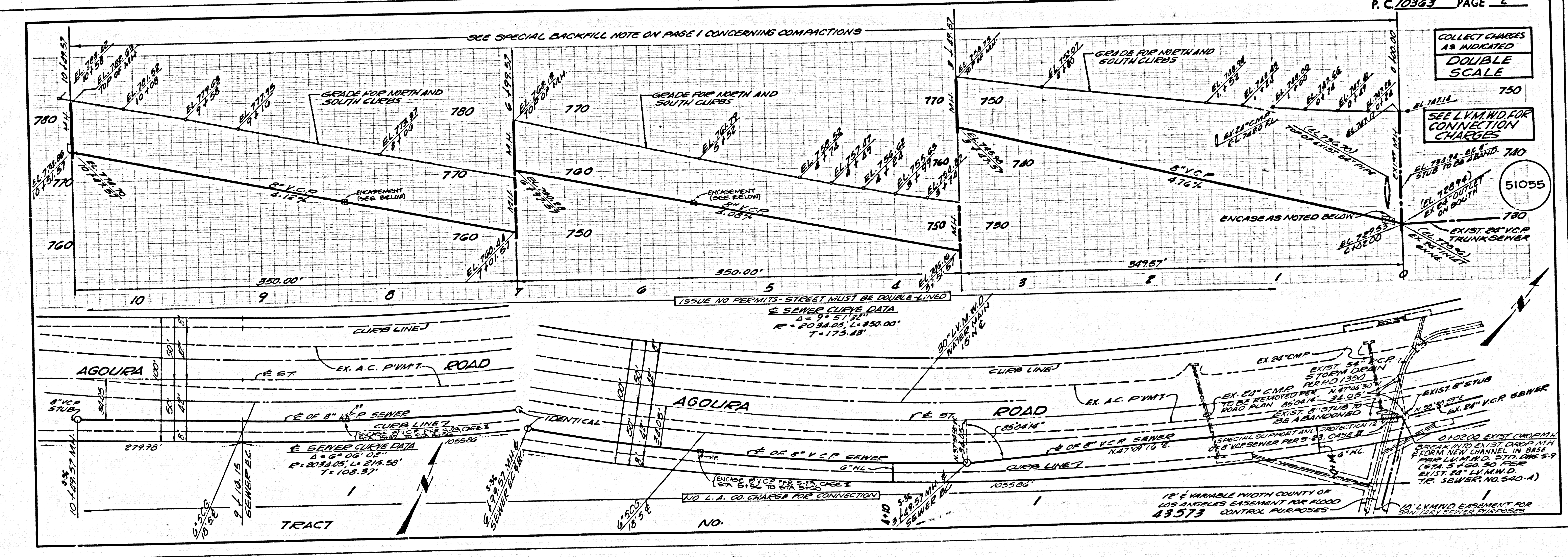


INDEX MAP
 P.C. 10363 TR. NO. 43573
 SCALE 1" = 600'

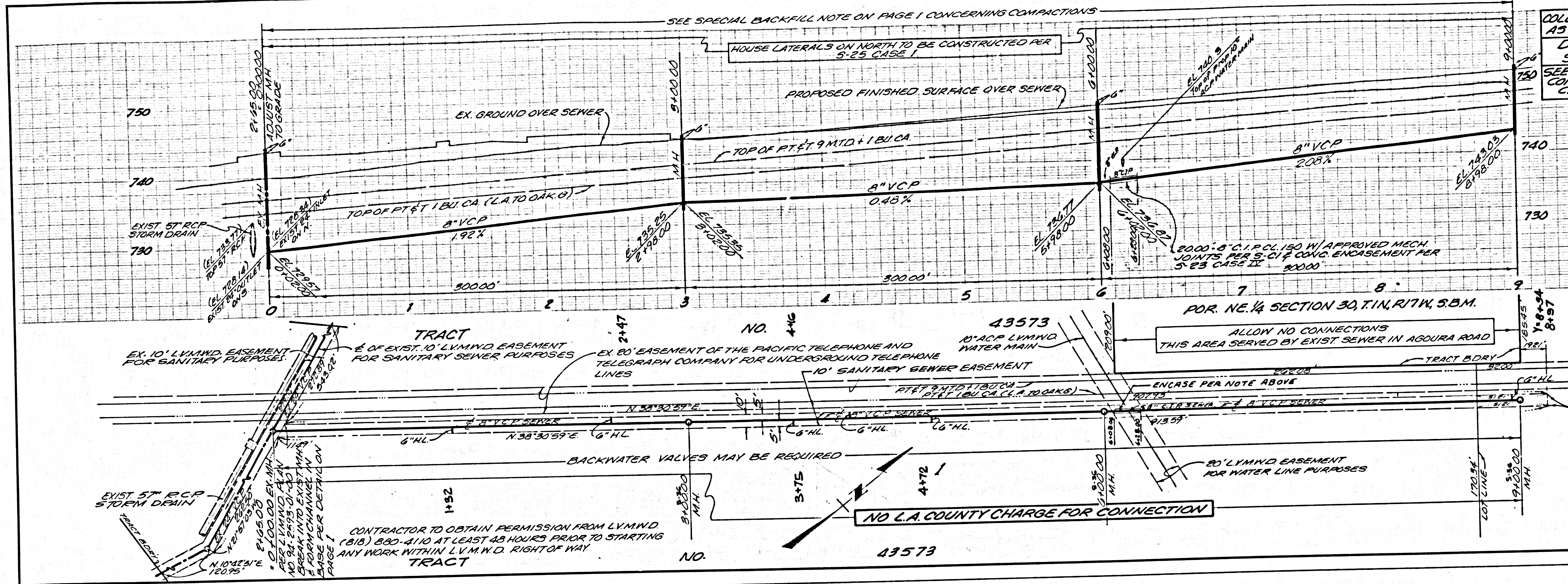


SECTION 'A-A'
DETAIL
MODIFY EX. MANHOLE
 NOT TO SCALE

- GENERAL NOTES:**
- ELEVATIONS ARE IN FEET ABOVE U.S.C. & G.S. SEA LEVEL DATUM OF 1929.
 - NO REVISIONS SHALL BE MADE IN THESE PLANS WITHOUT THE APPROVAL OF THE DEPT. OF PUBLIC WORKS.
 - NO REPRESENTATIVE OF THE DEPT. OF PUBLIC WORKS WILL SURVEY OR LAYOUT ANY PORTION OF THE WORK.
 - CHANGES TO WHICH THIS IMPROVEMENT IS TO BE CONSTRUCTED ARE SHOWN ON PLANS AND DETAILS. GRADE POINTS FOR TOP OF CURBS, CENTER LINE OF STREETS, OR CENTER LINE OF ALLEYS ARE SHOWN BY CIRCLES ON PLANS. AT ALL POINTS BETWEEN SAID DESIGNATED POINTS THE GRADE SHALL BE ESTABLISHED SO AS TO CONFORM TO A STRAIGHT LINE DRAWN BETWEEN SAID DESIGNATED POINTS.
 - THE PRIVATE ENGINEER SHALL FURNISH THE DEPT. OF PUBLIC WORKS WITH CHECK SHEETS AND STATIONING FOR ALL HOUSE LATERALS AND "T" OR "E" BRANCHES AND SHALL NOTIFY STAFFS FOR THEM AT THEIR PLACES LOCATIONS WITH STATIONING PLAINLY MARKED. ALL HOUSE LATERALS SHALL BE CONSTRUCTED IN A STRAIGHT ALIGNMENT AT RIGHT ANGLES FROM THE MAIN LINE SEWER EXCEPT AS SHOWN ON THE PLANS. HOUSE LATERALS FROM CHIMNEYS SHALL NOT HAVE AN ANGLE OF LESS THAN 45° WITH THE MAIN LINE SEWER. ANY CHANGE IN ALIGNMENT SHALL BE REQUESTED IN WRITING BY THE PRIVATE ENGINEER.
 - THE PRIVATE ENGINEER SHALL FURNISH THE HOUSE LATERAL BUFFER AT THE PROPERTY LINE BELOW THE TOP OF CURB ELEVATION FOR EACH HOUSE LATERAL ON THE GRADE SHEET.
 - BEFORE WORK CAN BE STARTED, THE CONTRACTOR MUST OBTAIN A PERMIT TO EXCAVATE IN CITY STREETS FROM THE DEPT. OF PUBLIC WORKS AND PAY A FEE TO THE DEPT. OF PUBLIC WORKS. SEE 5-10 REVISION AND 5-11 REVISION FOR PERMIT TO EXCAVATE IN CITY STREETS. A PERMIT MUST BE OBTAINED FROM THE STATE OF CALIFORNIA, DIVISION OF HIGHWAYS, 120 SOUTH SPRING STREET, LOS ANGELES, CALIFORNIA.
 - APPROVAL OF THIS PLAN BY THE DEPT. OF PUBLIC WORKS DOES NOT CONSTITUTE A REPRESENTATION AS TO THE ACCURACY OF THE LOCATION OF OR THE EXISTENCE OR NON-EXISTENCE OF ANY UNDERGROUND UTILITY PIPE, OR STRUCTURE WITHIN THE LIMITS OF THIS PROJECT. THIS NOTE APPLIES TO ALL PAGES.
 - REFER TO SECTION 7-10.4.1 OF THE STANDARD SPECIFICATIONS, REGARDING SAFETY CHAIRS.
 - ORDER TO THIS ISSUANCE OF THESE REVISIONS. REVISIONS BEING CONSTRUCTION PERMITS. THE CONTRACTOR SHALL OBTAIN AND FILE WITH THE DEPT. OF PUBLIC WORKS A PERMIT TO EXCAVATE IN CITY STREETS AND TRENCHING PERMITS FROM THE STATE OF CALIFORNIA, DIVISION OF INDUSTRIAL AND COMMERCIAL DEVELOPMENT AND A PERMIT TO EXCAVATE IN CITY STREETS FROM THE DEPT. OF PUBLIC WORKS. CALIFORNIA DIVISION OF INDUSTRIAL AND COMMERCIAL DEVELOPMENT, 1500 S. LOS ANGELES, LOS ANGELES, CALIFORNIA. THESE PERMITS SHALL BE OBTAINED BEFORE THE START OF CONSTRUCTION.
 - CONTRACTOR TO OBTAIN PERMISSION FROM L.V.M.W.D. (915-890-4100) AT LEAST 48 HOURS PRIOR TO STARTING ANY WORK WITHIN L.V.M.W.D. RIGHT-OF-WAY.
- CONSTRUCTION NOTES:**
- WORK SHALL BE CONSTRUCTED ACCORDING TO THE STANDARD SPECIFICATIONS FOR THE CONSTRUCTION OF SANITARY SEWERS DATED WITH 1984 SUPPLEMENT AND COUNTY ENGINEER SPECIAL PROVISIONS FOR THE CONSTRUCTION OF SANITARY SEWERS DATED 7/1/85. ALL SHALL BE PROSECUTED ONLY IN THE PRESENCE OF THE DEPT. OF PUBLIC WORKS.
 - THE CONTRACTOR SHALL NOTIFY THE CONSTRUCTION DIVISION BY TELEPHONE (713) 293-6500 AT LEAST TWENTY FOUR HOURS BEFORE STARTING ANY WORK UNDER THIS CONTRACT.
 - HOUSE LATERALS TO BE CONSTRUCTED WITH INVERTS AT PROPERTY LINE A FEET BELOW CURB GRADE EXCEPT AS NOTED.
 - PIPE ON THE BRANCHES MAY BE USED FOR CONNECTIONS TO MANHOLE SEWERS EXCEPT AS NOTED.
 - ALL STRUCTURES SHALL BE EITHER BRICK MANHOLES PER 5-3 OR PRECAST CONCRETE MANHOLES PER 5-14, EXCEPT AS NOTED.
 - PROVIDE STAFFS ON THE PROPERTY LINE OR PROPERTY LINES PRODUCED OR RIGHT ANGLES TO THE SEWER LINE AT THE CENTER LINE OF EACH MANHOLE.
 - MANHOLE TOPS IN UNIMPROVED PORTS OF WAY TO BE SIX INCHES ABOVE FINISHED GRADE.
 - VITRIFIED CLAY PIPE JOINTS SHALL BE TYPE "B", "F", OR "G" PER STANDARD SPECIFICATIONS SECTION 500-2.
 - IF A POWER POLE IS WITHIN THREE FEET OF THE SEWER, THE SEWER SHALL BE ENCASED PER 5-12, CASE B, TWO FEET ON EACH SIDE FROM THE POINT OF INTERFERENCE.
 - BE DURING THE COURSE OF CONSTRUCTION IT IS DETERMINED THAT THERE IS LESS THAN FOUR FEET OF COVER OVER THE TOP OF A MAIN LINE OR HOUSE LATERAL V.C.P. SEWER WHICH IS NOT INDICATED ON THE PLANS, THE PIPE SHALL BE ENCASED PER 5-12, CASE B, UNLESS OTHERWISE APPROVED BY THE DEPT. OF PUBLIC WORKS.
 - ALL JOINTS BETWEEN CAST IRON PIPE AND VITRIFIED CLAY PIPE SHALL BE MADE WITH A RUBBER SLEEVE JOINT, TYPE "C" OR "F", UNLESS OTHERWISE APPROVED BY THE DEPT. OF PUBLIC WORKS.
 - SEWERS TO BE TESTED FOR LEAKAGE PER SECTION 500-3 OF THE STANDARD SPECIFICATIONS AND SPECIAL PROVISIONS.
 - REINFORCE ALL TRENCHES WITHIN PAVED AREAS TO MEET CODE OF P.A.C. OR CALIFORNIA STATE HIGHWAY REQUIREMENTS IN ACCORDANCE WITH PERMITS.
 - FULL COMPLIANCE WITH SECTION 506-3.8 OF THE SPECIAL PROVISIONS WILL BE REQUIRED FOR BACKFILL IN STREETS. CERTIFICATION OF BACKFILL CONSTRUCTION LINE SAND EQUIVALENTS BY A QUALIFIED REGISTERED TESTING LABORATORY SHALL BE PROVIDED BY THE CONTRACTOR PRIOR TO THE ISSUANCE OF A CERTIFICATE OF PARTIAL ACCEPTANCE.
 - SPECIAL BACKFILL IN UNIMPROVED PORTS OF WAY SHALL BE PROVIDED FOR TRENCHES AND REPLACEMENT OF EXISTING SEWERS TO MEET THE REQUIREMENTS OF THE STANDARD SPECIFICATIONS AND SPECIAL PROVISIONS. THE BACKFILL SHALL BE PLACED IN LAYERS NOT EXCEEDING 12 INCHES IN THICKNESS. THE BACKFILL SHALL BE COMPACTED TO A MINIMUM OF 90% OF MAXIMUM DRY DENSITY. THE BACKFILL SHALL BE SUBMITTED TO THE DEPT. OF PUBLIC WORKS FOR APPROVAL. ALL TRENCH CONSTRUCTION SHALL BE SUBMITTED TO THE DEPT. OF PUBLIC WORKS FOR APPROVAL.



P.C. 10363 PAGE 2
 COLLECT CHARGES AS INDICATED
DOUBLE SCALE



COLLECT CHARGES AS INDICATED
 DOUBLE SCALE
 SEE L.V.M.W.D. FOR CONNECTION CHARGES

51056